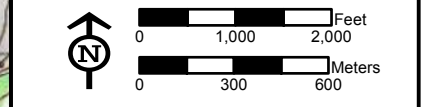
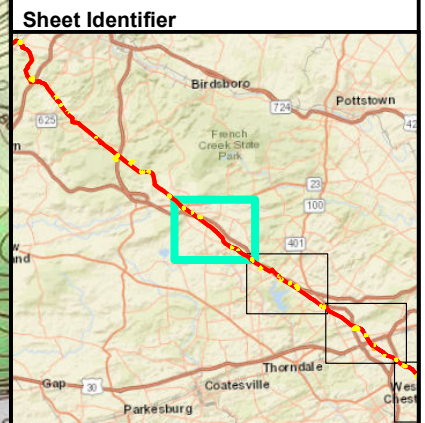


Start of Line  
PADEP Southeast Region  
Lat: 40° 9' 21.272" N  
Lon: 75° 50' 34.717" W

**Legend**

- Access Road
- Alignment Centerline
- Limit of Disturbance
- Block Valve/Station

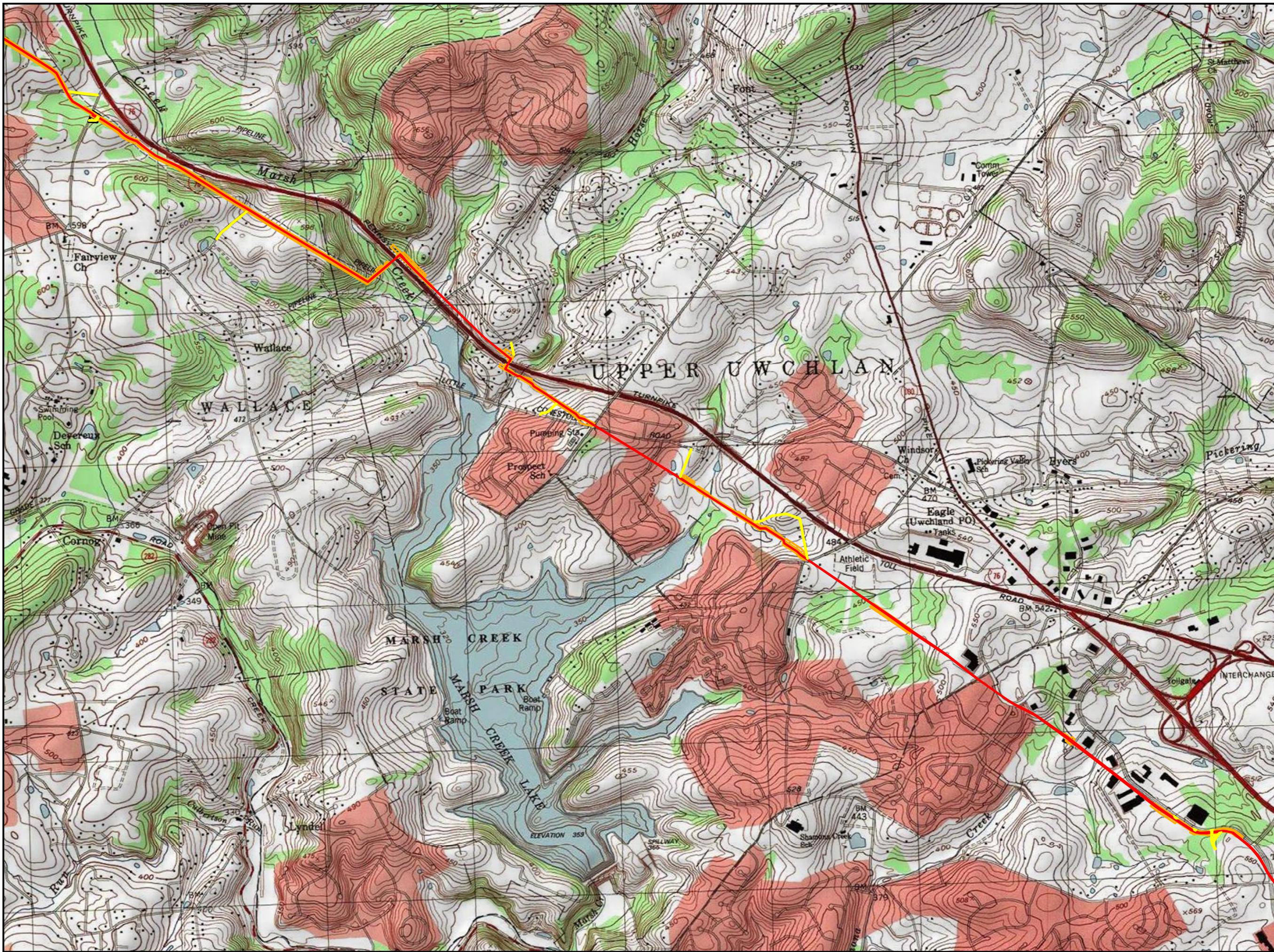


**PROJECT LOCATION MAP  
ATTACHMENT 1-1  
PENNSYLVANIA PIPELINE PROJECT  
NOVEMBER 12, 2016 ALIGNMENT  
SUNOCO LOGISTICS, L.P.  
CHESTER COUNTY,  
PENNSYLVANIA**



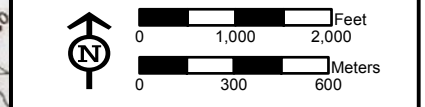
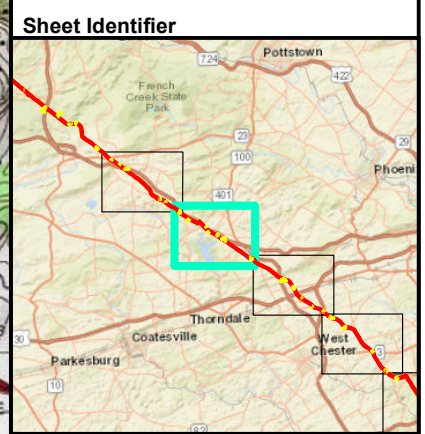
**Notes:**  
1) Topographic map provided by ESRI's ArcGIS Online USA Topo Maps map service (© 2013 National Geographic Society, i-cubed).  
2) Quadrangles being displayed are Downingtown, Elverson, Pottstown, Wagontown

FGH P:\GIS\SUNOCOMARINER EAST 2\MXD\PPP ESCOP\PIP\PIPELINE\_SOUTHEAST\_USGS\_ESCOP\MXD 11/17/16 .JN



**Legend**

- Access Road
- Alignment Centerline
- Limit of Disturbance
- Block Valve/Station

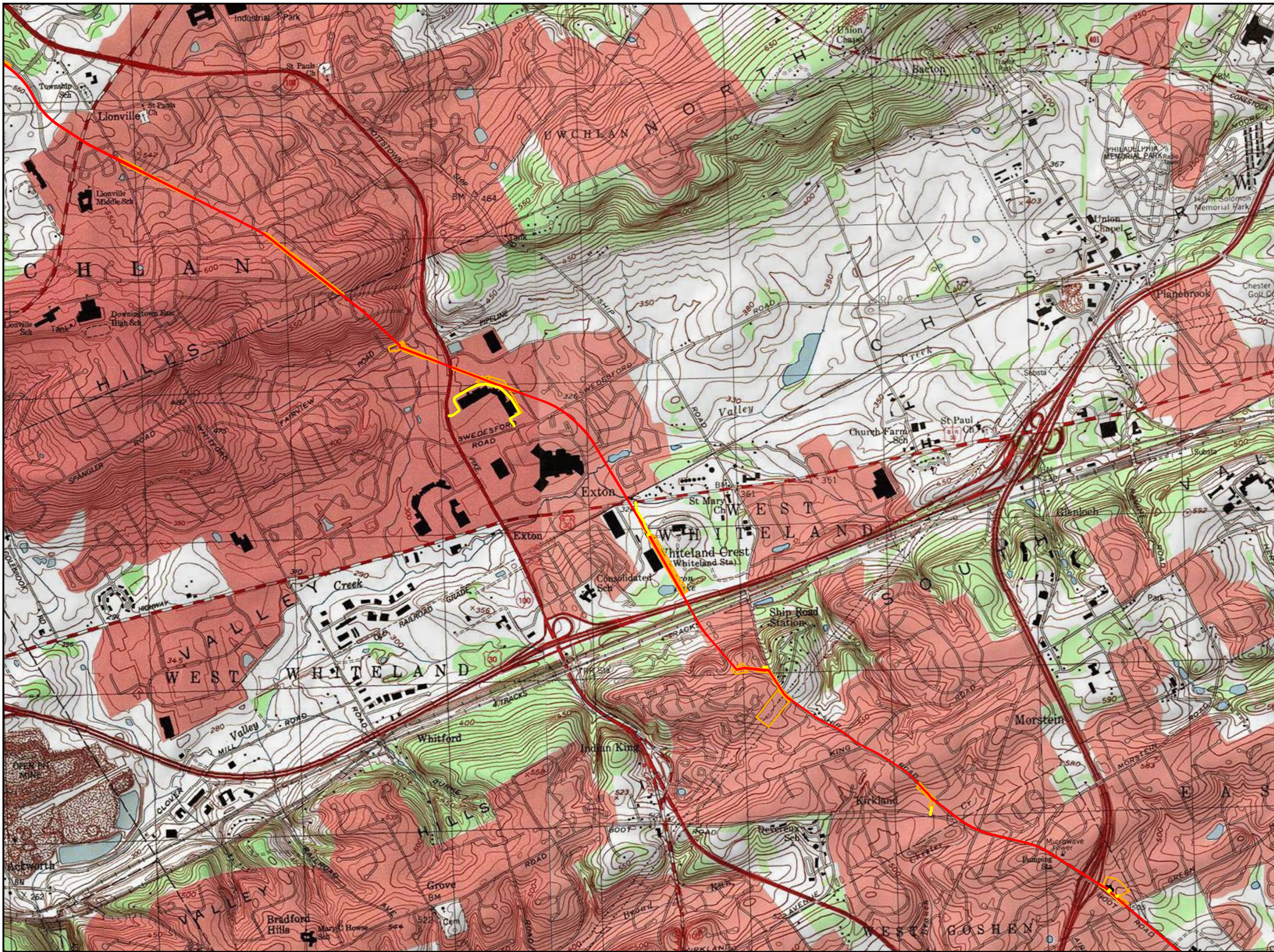


**PROJECT LOCATION MAP  
ATTACHMENT 1-2  
PENNSYLVANIA PIPELINE PROJECT  
NOVEMBER 12, 2016 ALIGNMENT  
SUNOCO LOGISTICS, L.P.  
CHESTER COUNTY,  
PENNSYLVANIA**



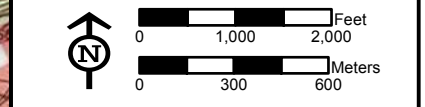
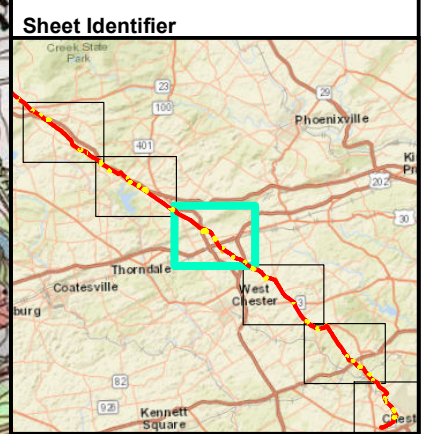
Notes:  
 1) Topographic map provided by ESRI's ArcGIS Online USA Topo Maps map service (© 2013 National Geographic Society, i-cubed).  
 2) Quadrangles being displayed are Downingtown, Wagontown

P:\GIS\SUNOCOMARINER EAST 2\MXD\PPP ESCOP\PPP\PIPELINE\_SOUTHEAST\_USGS\_ESCOP\MXD 11/17/16\_JN



**Legend**

- Access Road
- Alignment Centerline
- Limit of Disturbance
- Block Valve/Station

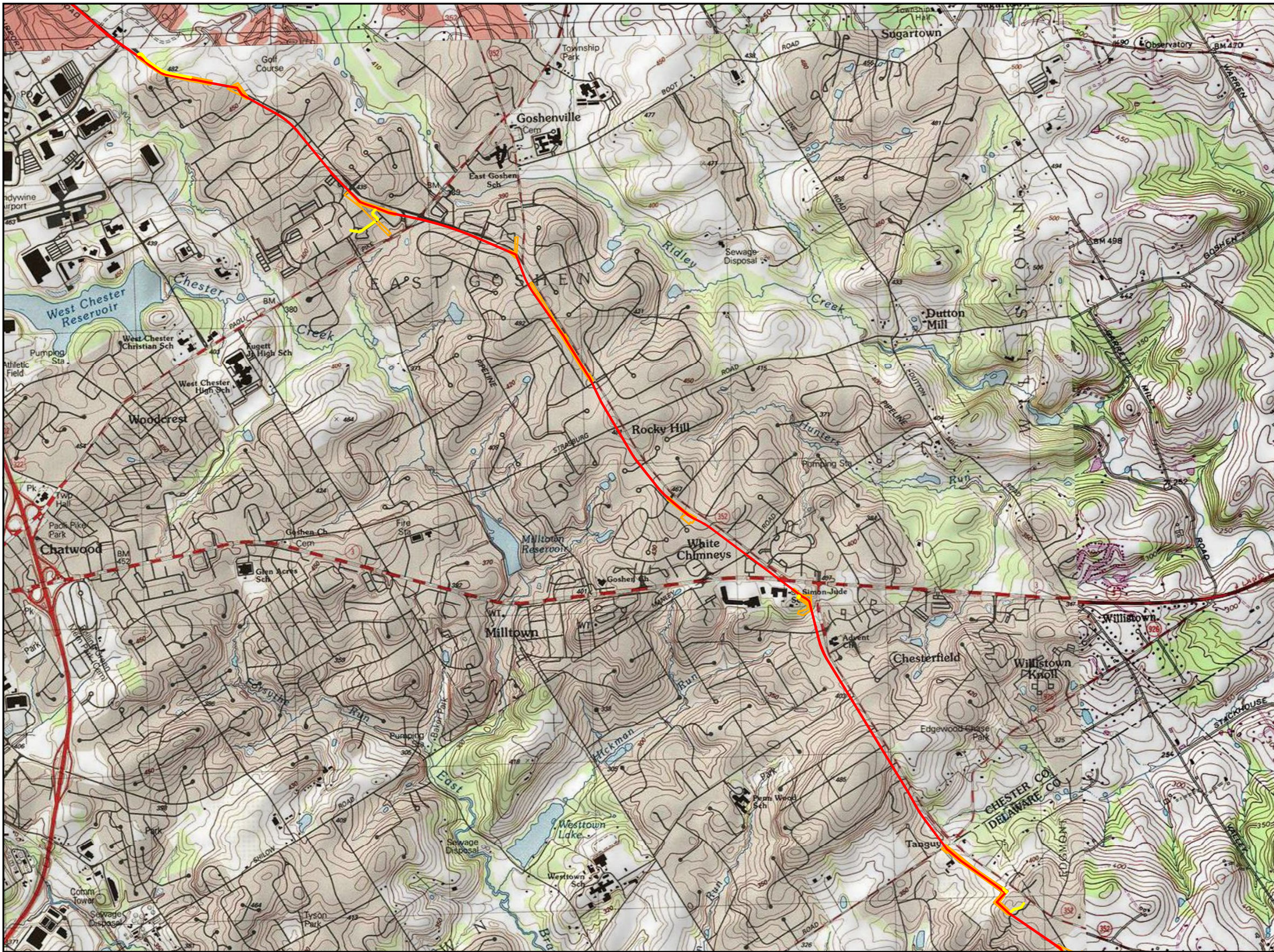


**PROJECT LOCATION MAP  
ATTACHMENT 1-3  
PENNSYLVANIA PIPELINE PROJECT  
NOVEMBER 12, 2016 ALIGNMENT  
SUNOCO LOGISTICS, L.P.  
CHESTER COUNTY,  
PENNSYLVANIA**



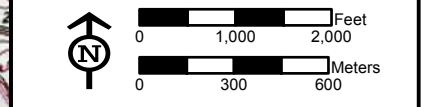
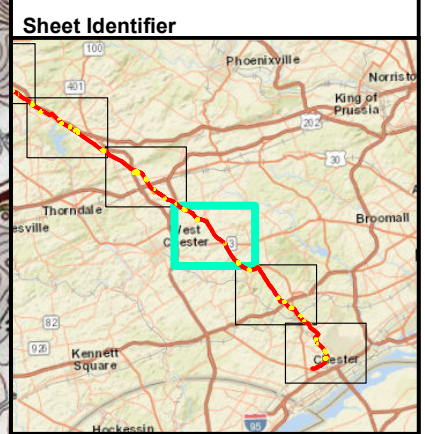
**Notes:**  
 1) Topographic map provided by ESRI's ArcGIS Online USA Topo Maps map service (© 2013 National Geographic Society, i-cubed).  
 2) Quadrangles being displayed are Downingtown, Malvern

FGH P:\GIS\SUNOCO\MARINER EAST 2\MXD\PPP\ESCP\PIPELINE\_SOUTHEAST\_USGS\_ESCOP\MXD 11/17/16 JN



**Legend**

- Access Road
- Alignment Centerline
- Limit of Disturbance
- Block Valve/Station

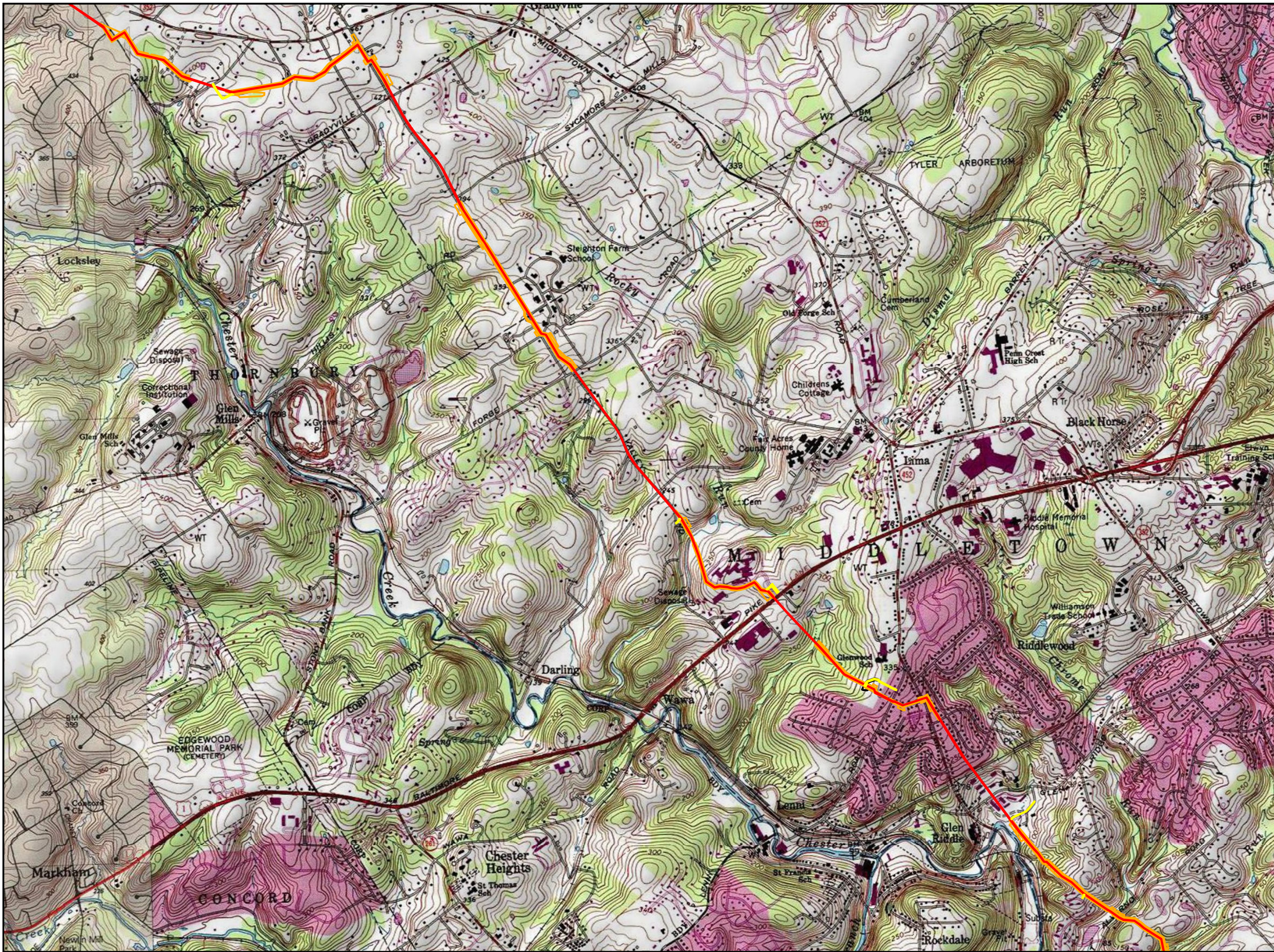


**PROJECT LOCATION MAP  
ATTACHMENT 1-4  
PENNSYLVANIA PIPELINE PROJECT  
NOVEMBER 12, 2016 ALIGNMENT  
SUNOCO LOGISTICS, L.P.  
CHESTER, DELAWARE COUNTY,  
PENNSYLVANIA**



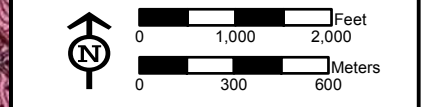
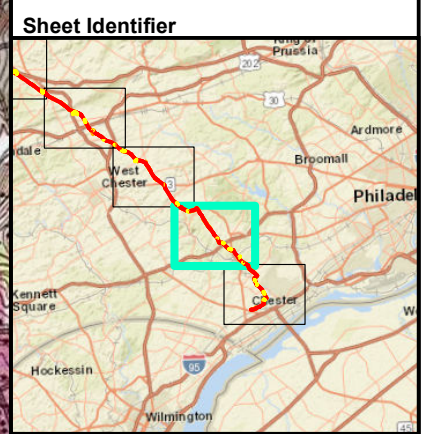
Notes:  
 1) Topographic map provided by ESRI's ArcGIS Online USA Topo Maps map service (© 2013 National Geographic Society, I-cubed).  
 2) Quadrangles being displayed are Malvern, West Chester

FGH P:\GIS\SUNOCO\MARINER EAST 2\MXD\PPP ESCOP\PIPELINE\_SOUTHEAST\_USGS\_ESCOP.MXD 11/17/16 JN



**Legend**

- Access Road
- Alignment Centerline
- Limit of Disturbance
- Block Valve/Station

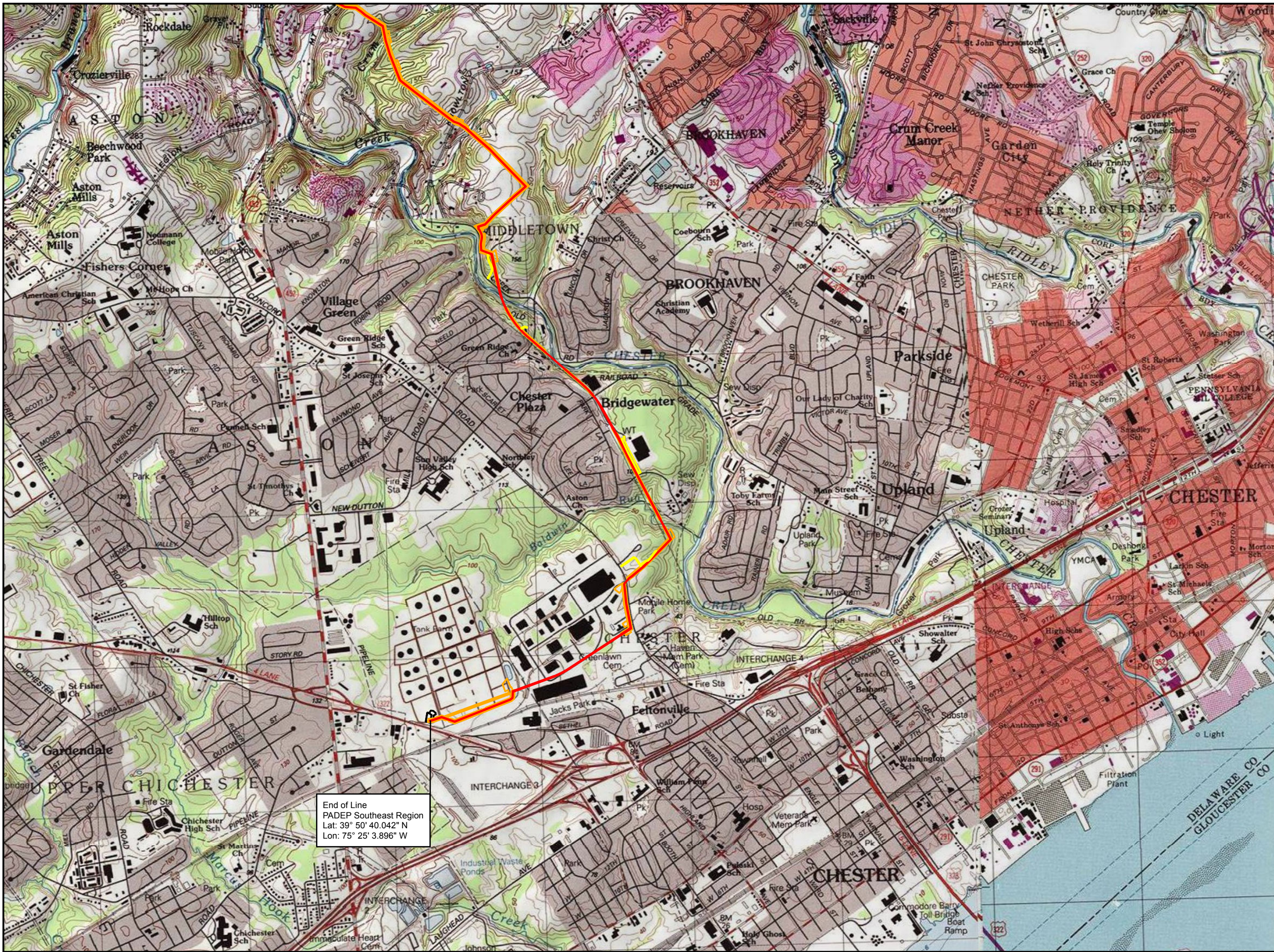


**PROJECT LOCATION MAP  
ATTACHMENT 1-5  
PENNSYLVANIA PIPELINE PROJECT  
NOVEMBER 12, 2016 ALIGNMENT  
SUNOCO LOGISTICS, L.P.  
DELAWARE COUNTY,  
PENNSYLVANIA**



**Notes:**  
 1) Topographic map provided by ESRI's ArcGIS Online USA Topo Maps map service (© 2013 National Geographic Society, i-cubed).  
 2) Quadrangles being displayed are Media, West Chester

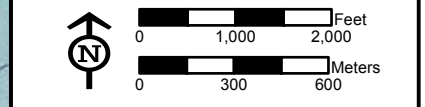
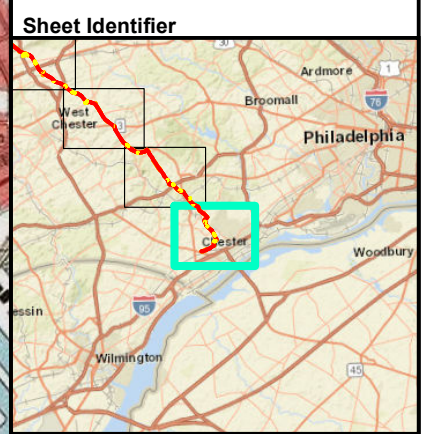
P:\GIS\SUNOCO\MARINER EAST 2\MXD\PPP-ESCOP\PIPELINE\_SOUTHEAST\_USGS\_ESCOP.MXD 11/17/16 JN



End of Line  
 PADEP Southeast Region  
 Lat: 39° 50' 40.042" N  
 Lon: 75° 25' 3.896" W

**Legend**

- Access Road
- Alignment Centerline
- Limit of Disturbance
- Block Valve/Station



**PROJECT LOCATION MAP**  
 ATTACHMENT 1-6  
 PENNSYLVANIA PIPELINE PROJECT  
 NOVEMBER 12, 2016 ALIGNMENT  
 SUNOCO LOGISTICS, L.P.  
 DELAWARE COUNTY,  
 PENNSYLVANIA



Notes:  
 1) Topographic map provided by ESRI's ArcGIS Online USA Topo Maps map service (© 2013 National Geographic Society, i-cubed).  
 2) Quadrangles being displayed are Media, Marcus Hook

FGH: P:\GIS\UNOCOMARINER\_EAST\_2\MXD\PPP\_ESCOP\PPP\PIPELINE\_SOUTHEAST\_USGS\_ESCOP.MXD 11/17/16 JN