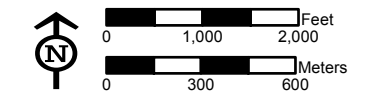
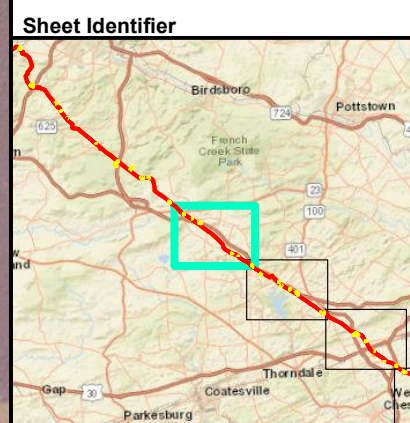


- ### Legend
- Access Road
 - Alignment Centerline
 - Limit of Disturbance
 - Block Valve/Station
 - Antietam and Harpers Formations undivided (Cah)
 - Chickies Formation (Cch)
 - Ledger Formation (Cl)
 - Vintage Formation (Cv)
 - Zooks Corner Formation (Czc)
 - Diabase (Jd)
 - Stockton Formation (Trs)
 - Ultramafic rocks (Xu)
 - Anorthosite (a)
 - Franklin Marble (fm)
 - Graphitic felsic gneiss (gg)
 - Banded mafic gneiss (gga)
 - Felsic and intermediate gneiss (ggd)
 - Graphitic felsic gneiss (gqm)



GEOLOGIC UNIT MAP
ATTACHMENT 2-1
PENNSYLVANIA PIPELINE PROJECT
NOVEMBER 12, 2016 ALIGNMENT
SUNOCO LOGISTICS, L.P.
CHESTER COUNTY,
PENNSYLVANIA



Notes:
 Aerial photograph provided by ESRI's
 ArcGIS Online World Imagery map service
 (© 2013 ESRI and its data suppliers).

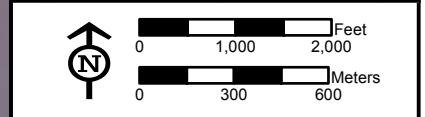
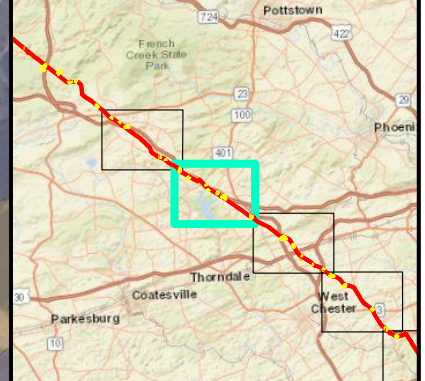
PGH_P:\GIS\SUNOCO\MARINER_EAST_2\MXD\PPP_ESCOP\PPP_PIPELINE_SOUTHEAST_GEOLOGY_ESCOP.MXD 11/21/16 JN



Legend

- Access Road
- Alignment Centerline
- Limit of Disturbance
- Block Valve/Station
- Chickies Formation (Cch)
- Ultramafic rocks (Xu)
- Anorthosite (a)
- Franklin Marble (fm)
- Graphitic felsic gneiss (gg)
- Banded mafic gneiss (gga)
- Felsic and intermediate gneiss (ggd)
- Graphitic felsic gneiss (gqm)
- Metadiabase (md)

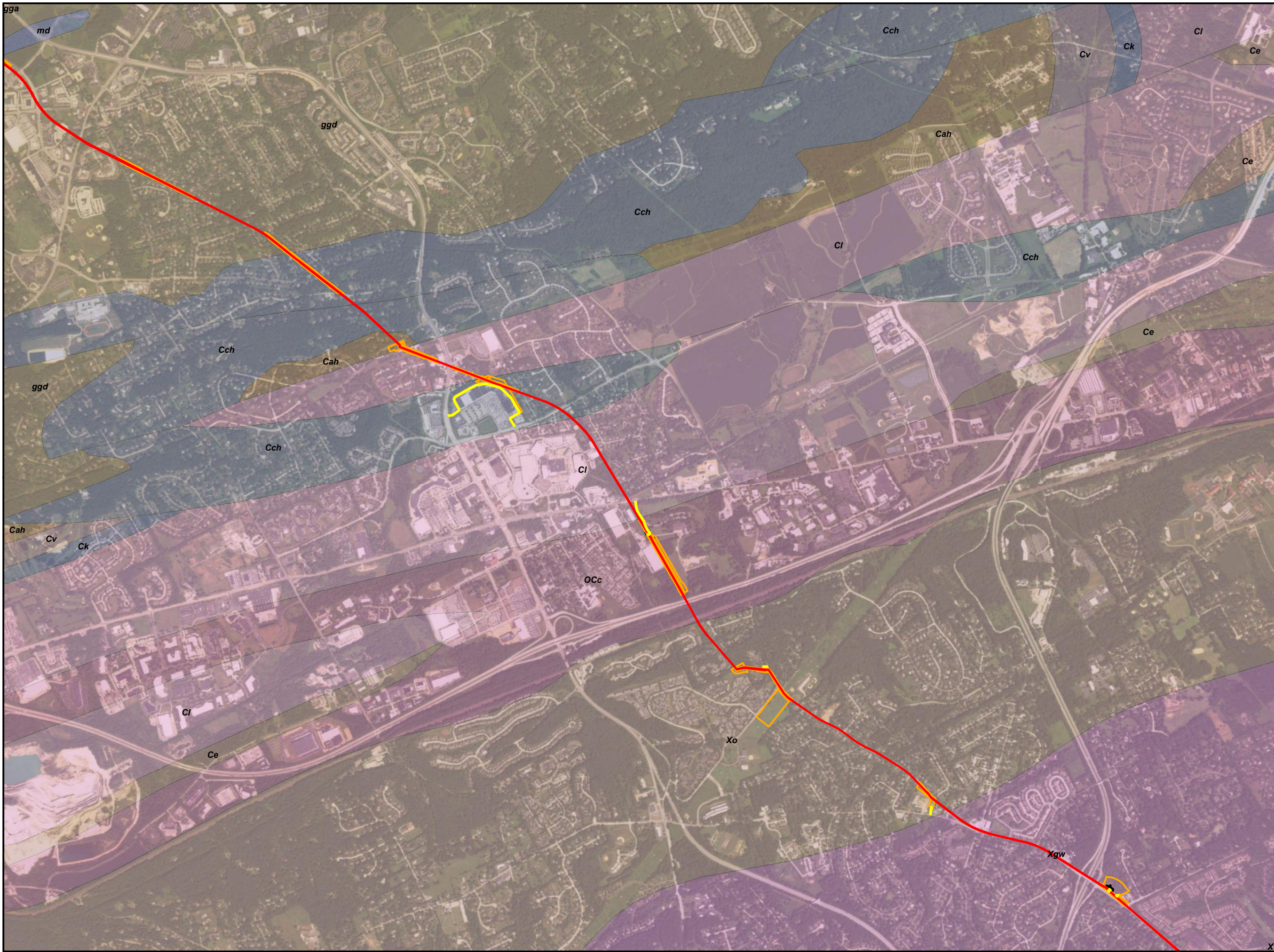
Sheet Identifier



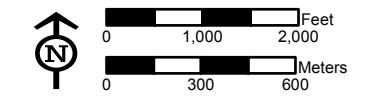
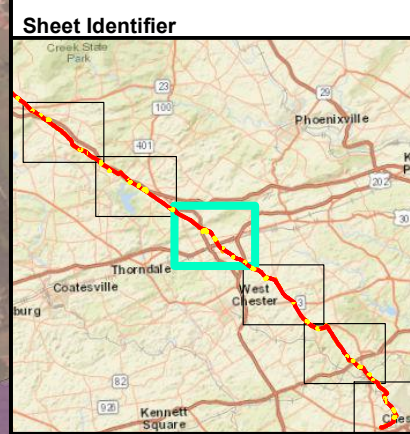
GEOLOGIC UNIT MAP
ATTACHMENT 2-2
PENNSYLVANIA PIPELINE PROJECT
NOVEMBER 12, 2016 ALIGNMENT
SUNOCO LOGISTICS, L.P.
CHESTER COUNTY,
PENNSYLVANIA



Notes:
 Aerial photograph provided by ESRI's
 ArcGIS Online World Imagery map service
 © 2013 ESRI and its data suppliers.



- ### Legend
- Access Road
 - Alignment Centerline
 - Limit of Disturbance
 - Block Valve/Station
 - Antietam and Harpers Formations undivided (Cah)
 - Chickies Formation (Cch)
 - Elbrook Formation (Ce)
 - Kinzers Formation (Ck)
 - Ledger Formation (Cl)
 - Vintage Formation (Cv)
 - Conestoga Formation (OCo)
 - Glenarm Wissahickon Formation (Xgw)
 - Octoraro Formation (Xo)
 - Ultramafic rocks (Xu)
 - Banded mafic gneiss (gga)
 - Felsic and intermediate gneiss (ggd)
 - Metadiabase (md)

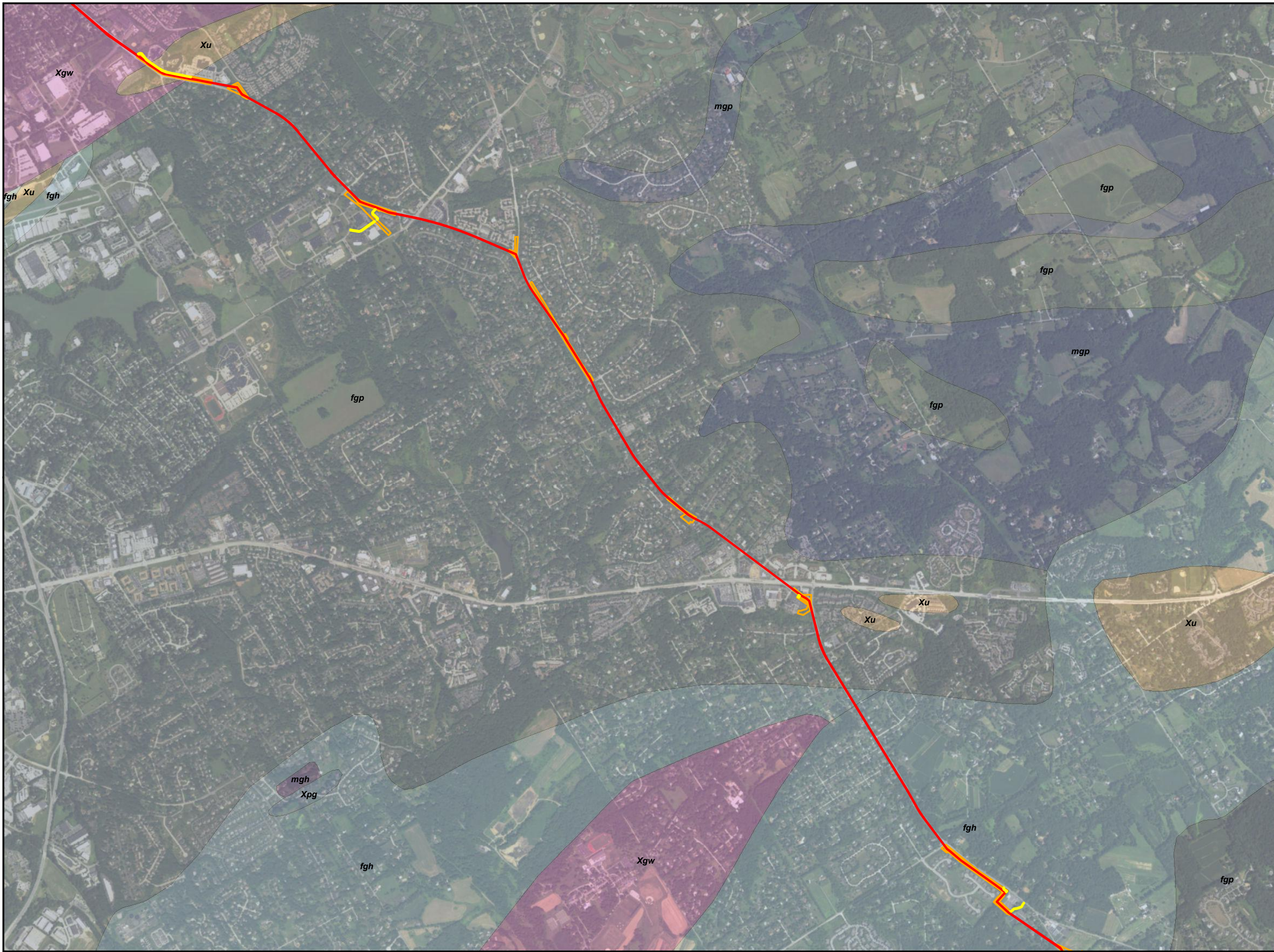


GEOLOGIC UNIT MAP
ATTACHMENT 2-3
PENNSYLVANIA PIPELINE PROJECT
NOVEMBER 12, 2016 ALIGNMENT
SUNOCO LOGISTICS, L.P.
CHESTER COUNTY,
PENNSYLVANIA

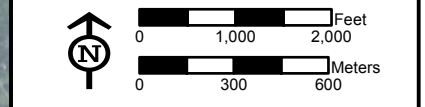
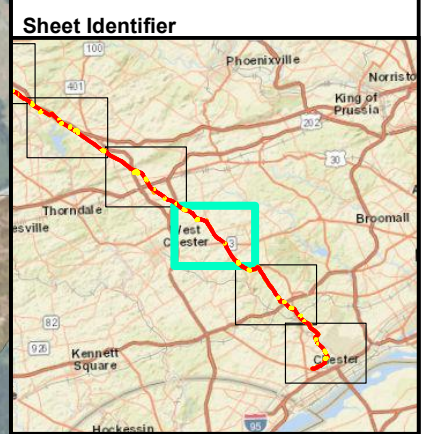


Notes:
 Aerial photograph provided by ESRI's
 ArcGIS Online World Imagery map service
 © 2013 ESRI and its data suppliers.

PGH_P:\GIS\SUNOCO\MARINER_EAST_2\MXD\PPP_ESCOP\PPP_PIPELINE_SOUTHEAST_GEOLOGY_ESCOP.MXD 11/21/16 JN



- Legend**
- Access Road
 - Alignment Centerline
 - Limit of Disturbance
 - Block Valve/Station
 - Glenarm Wissahickon Formation (Xgw)
 - Pegmatite (Xpg)
 - Ultramafic rocks (Xu)
 - Felsic and intermediate gneiss (fgh)
 - Felsic gneiss (fgp)
 - Mafic gneiss (mgh)
 - Mafic gneiss (mgp)



GEOLOGIC UNIT MAP
ATTACHMENT 2-4
PENNSYLVANIA PIPELINE PROJECT
NOVEMBER 12, 2016 ALIGNMENT
SUNOCO LOGISTICS, L.P.
CHESTER, DELAWARE COUNTY,
PENNSYLVANIA

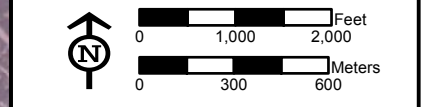
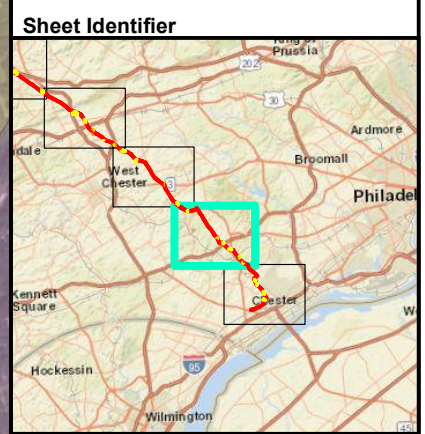


Notes:
 Aerial photograph provided by ESRI's
 ArcGIS Online World Imagery map service
 (© 2013 ESRI and its data suppliers).

FGHP:\P\GIS\SUNOCO\MARINER EAST 2\MXD\PPP\ESGCP\PPP\PIPELINE_SOUTHEAST_GEOLOGY_ESGCP.MXD 11/21/16 JN



- Legend**
- Access Road
 - Alignment Centerline
 - Limit of Disturbance
 - Block Valve/Station
 - Bryn Mawr Formation (Tbm)
 - Granitic gneiss and granite (Xgr)
 - Glenarm Wissahickon Formation (Xgw)
 - Mafic gneiss (Xmg)
 - Ultramafic rocks (Xu)
 - Wissahickon Formation (Xw)
 - Felsic and intermediate gneiss (fgh)
 - Felsic gneiss (fgp)
 - Mafic gneiss (mgh)



GEOLOGIC UNIT MAP
ATTACHMENT 2-5
PENNSYLVANIA PIPELINE PROJECT
NOVEMBER 12, 2016 ALIGNMENT
SUNOCO LOGISTICS, L.P.
DELAWARE COUNTY,
PENNSYLVANIA



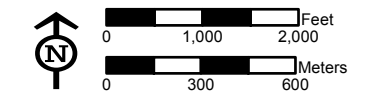
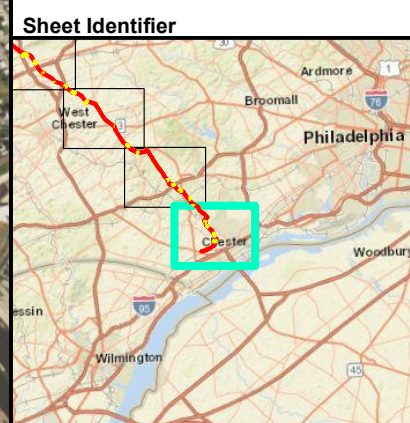
Notes:
 Aerial photograph provided by ESRI's
 ArcGIS Online World Imagery map service
 (© 2013 ESRI and its data suppliers).

FGHP:\P\GIS\SUNOCO\MARINER EAST 2\MXD\PPP_ESCOP\PPP_PIPELINE_SOUTHEAST_GEOLOGY_ESCOP.MXD 11/21/16 JN



- ### Legend
- Access Road
 - Alignment Centerline
 - Limit of Disturbance
 - Block Valve/Station
 - Pensauken and Bridgeton Formations undifferentiated (Tpb)
 - Anorthosite (Xa)
 - Granitic gneiss and granite (Xgr)
 - Glenarm Wissahickon Formation (Xgw)
 - Mafic gneiss (Xmgh)
 - Mafic gneiss (Xmgp)
 - Ultramafic rocks (Xu)
 - Wissahickon Formation (Xw)
 - Felsic and intermediate gneiss (fgh)

End of Line
PADEP Southeast Region
Lat: 39° 50' 40.042" N
Lon: 75° 25' 3.896" W



**GEOLOGIC UNIT MAP
ATTACHMENT 2-6
PENNSYLVANIA PIPELINE PROJECT
NOVEMBER 12, 2016 ALIGNMENT
SUNOCO LOGISTICS, L.P.
DELAWARE COUNTY,
PENNSYLVANIA**



Notes:
Aerial photograph provided by ESRI's
ArcGIS Online World Imagery map service
(© 2013 ESRI and its data suppliers).