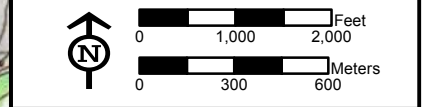
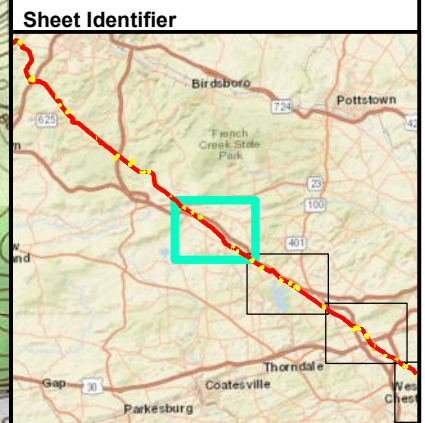


Start of Line
PADEP Southeast Region
Lat: 40° 9' 21.272" N
Lon: 75° 50' 34.717" W

Legend

- Stream
- Alignment Centerline
- Access Road
- Limit of Disturbance
- Block Valve/Station

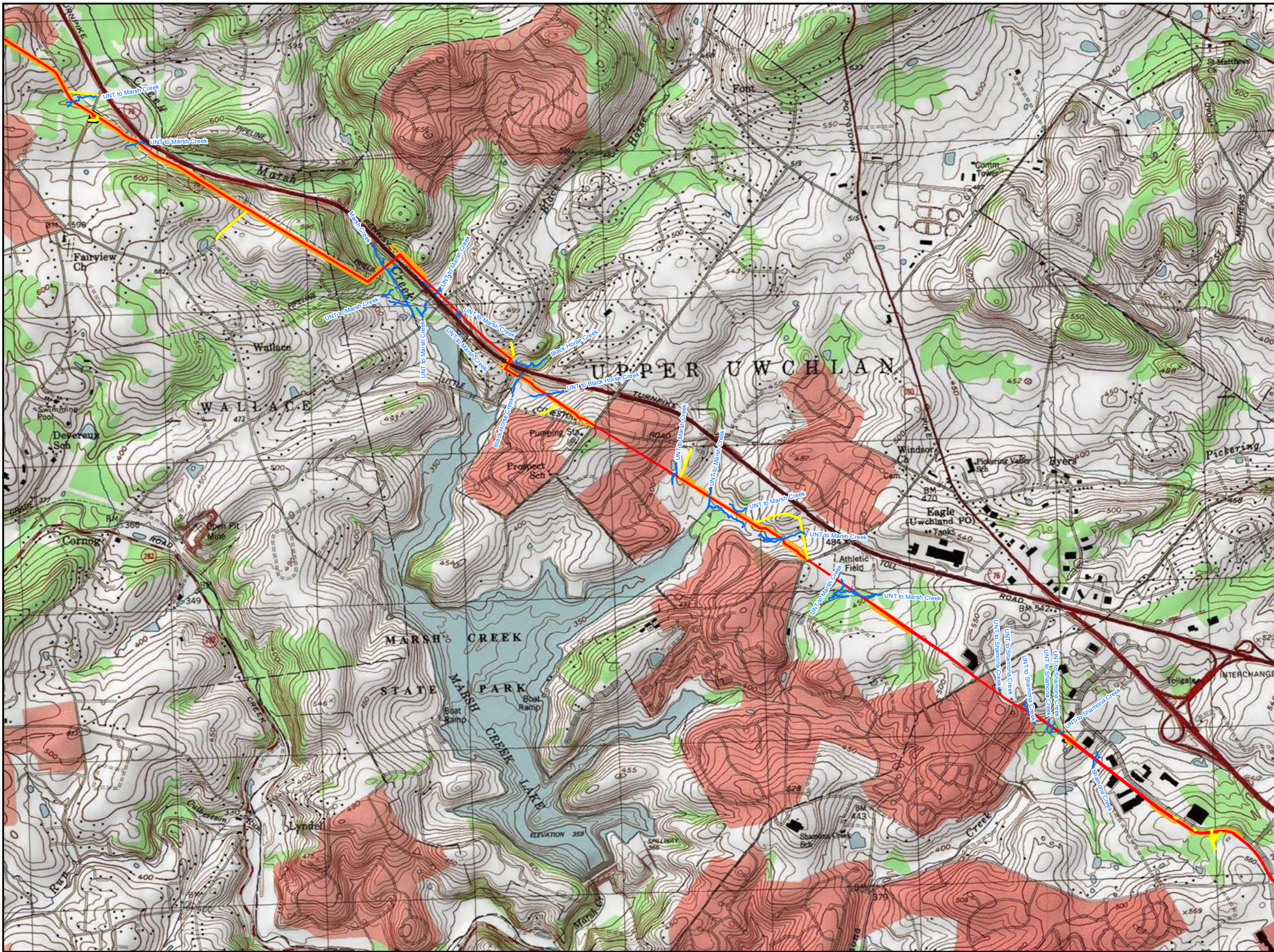


**PROJECT LOCATION MAP
ATTACHMENT 1-1
PENNSYLVANIA PIPELINE PROJECT
NOVEMBER 12, 2016 ALIGNMENT
SUNOCO LOGISTICS, L.P.
CHESTER COUNTY,
PENNSYLVANIA**



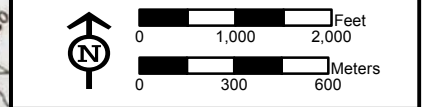
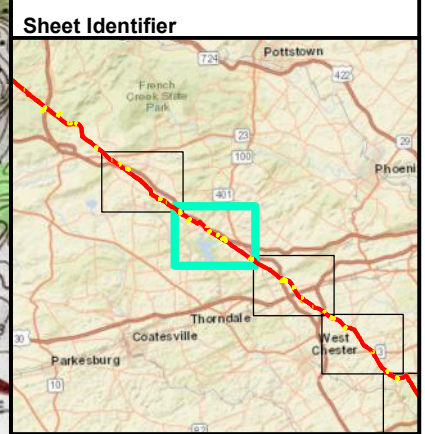
Notes:
1) Topographic map provided by ESRI's ArcGIS Online USA Topo Maps map service (© 2013 National Geographic Society, i-cubed).
2) Quadrangles being displayed are Downingtown, Elverson, Pottstown, Wagontown

FGH_P:\GIS\SUNOCO\MARINER_EAST_2M\XDRPP\PCSM\PIPELINE_PCSM_SOUTH_EAST_USGS_RECEIVINGSTREAMS.MXD 11/17/16 JN



Legend

- Stream
- Alignment Centerline
- Access Road
- Limit of Disturbance
- Block Valve/Station

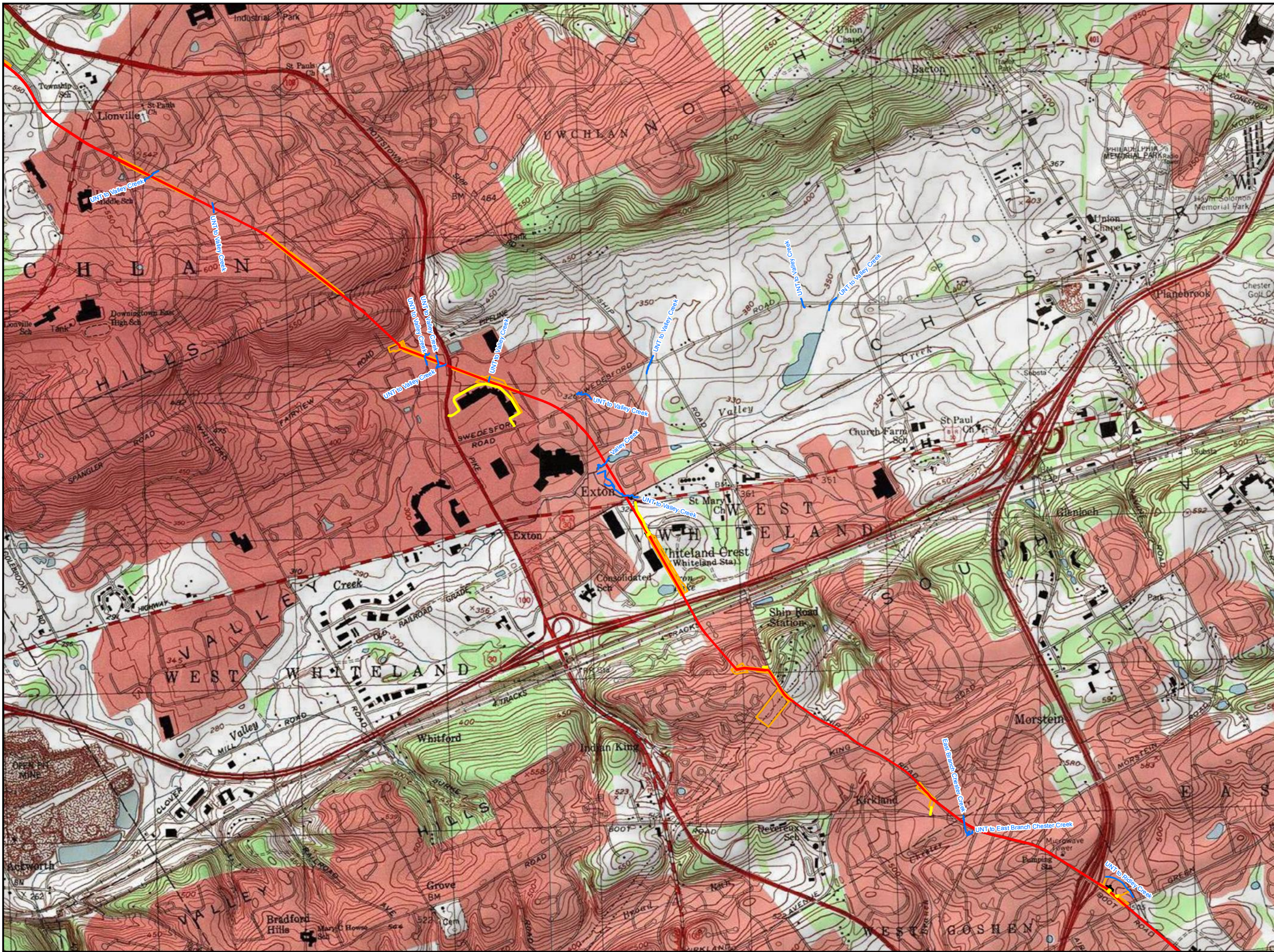


**PROJECT LOCATION MAP
ATTACHMENT 1-2
PENNSYLVANIA PIPELINE PROJECT
NOVEMBER 12, 2016 ALIGNMENT
SUNOCO LOGISTICS, L.P.
CHESTER COUNTY,
PENNSYLVANIA**



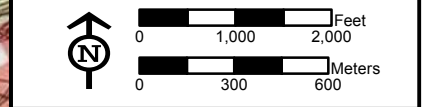
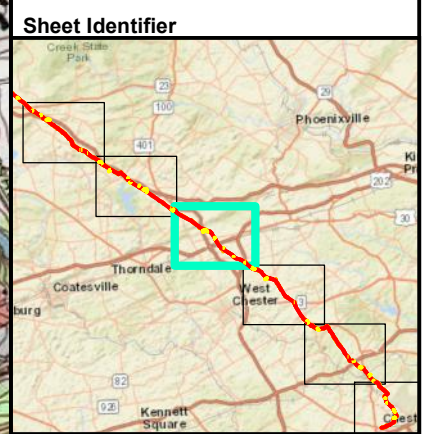
Notes:
 1) Topographic map provided by ESRI's ArcGIS Online USA Topo Maps map service (© 2013 National Geographic Society, I-cubed).
 2) Quadrangles being displayed are Downingtown, Wagontown

P:\GIS\SUNOCO\MARINER EAST 2\MD\PPP_PCS\MPP\PIPELINE_PCS\M_SOUTH_EAST_USGS_RECEIVINGSTREAMS.MXD 11/17/16 JN



Legend

- Stream
- Alignment Centerline
- Access Road
- Limit of Disturbance
- Block Valve/Station

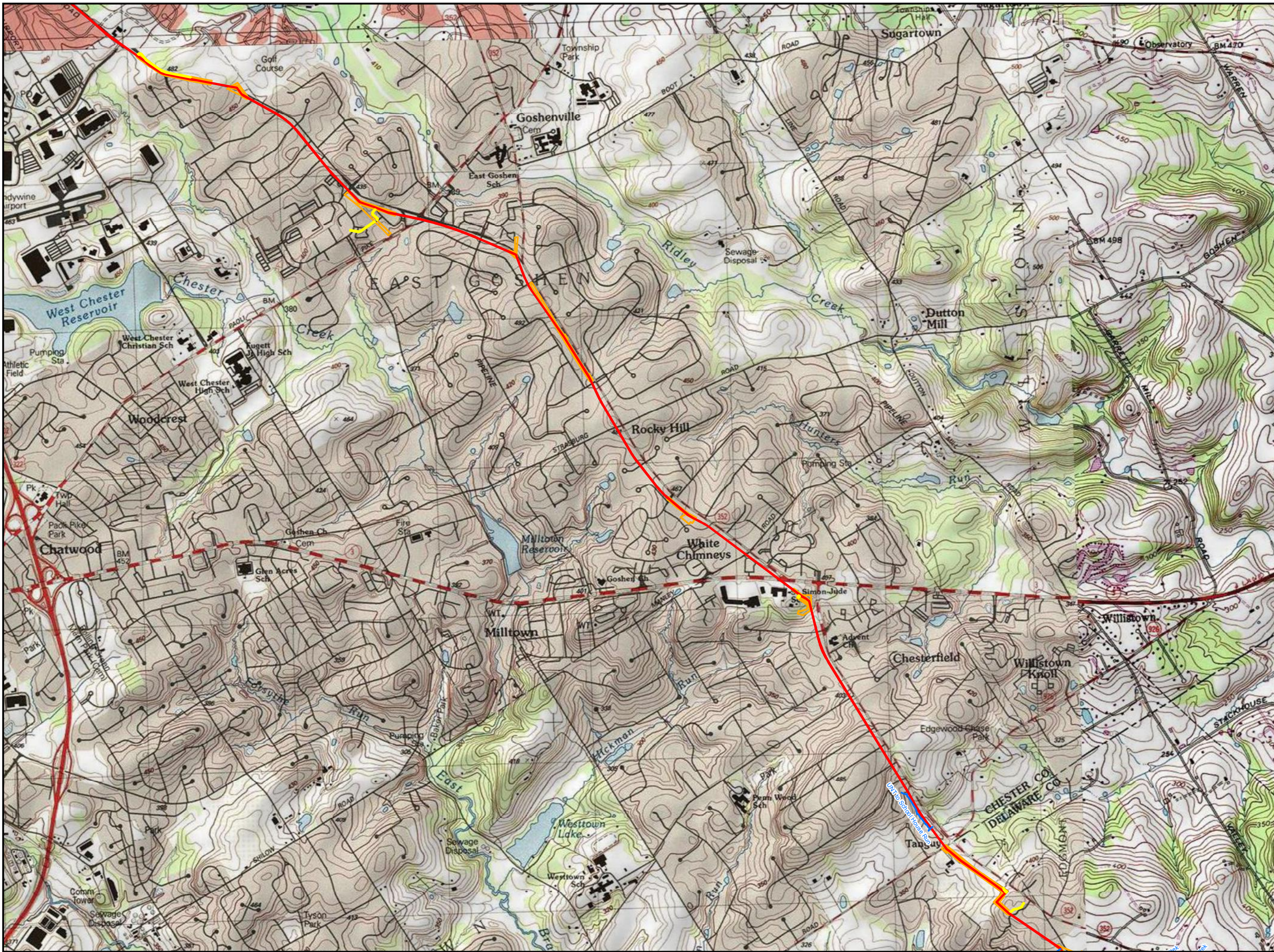


**PROJECT LOCATION MAP
ATTACHMENT 1-3
PENNSYLVANIA PIPELINE PROJECT
NOVEMBER 12, 2016 ALIGNMENT
SUNOCO LOGISTICS, L.P.
CHESTER COUNTY,
PENNSYLVANIA**



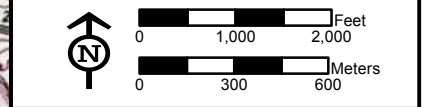
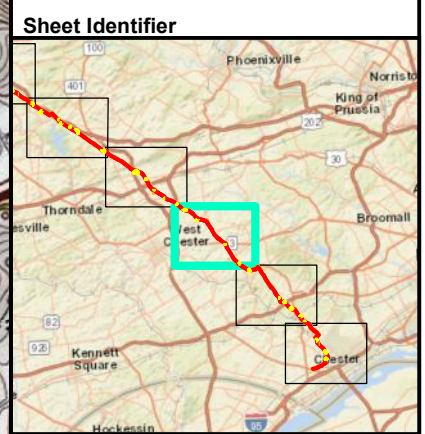
Notes:
 1) Topographic map provided by ESRI's ArcGIS Online USA Topo Maps map service (© 2013 National Geographic Society, i-cubed).
 2) Quadrangles being displayed are Downingtown, Malvern

P:\GIS\SUNOCO\MARINER EAST 2\MXD\PPP_PCS\MIP\PIPELINE_PCS\M_SOUTH_EAST_USGS_RECEIVINGSTREAMS.MXD 11/17/16 JN



Legend

- Stream
- Alignment Centerline
- Access Road
- Limit of Disturbance
- Block Valve/Station



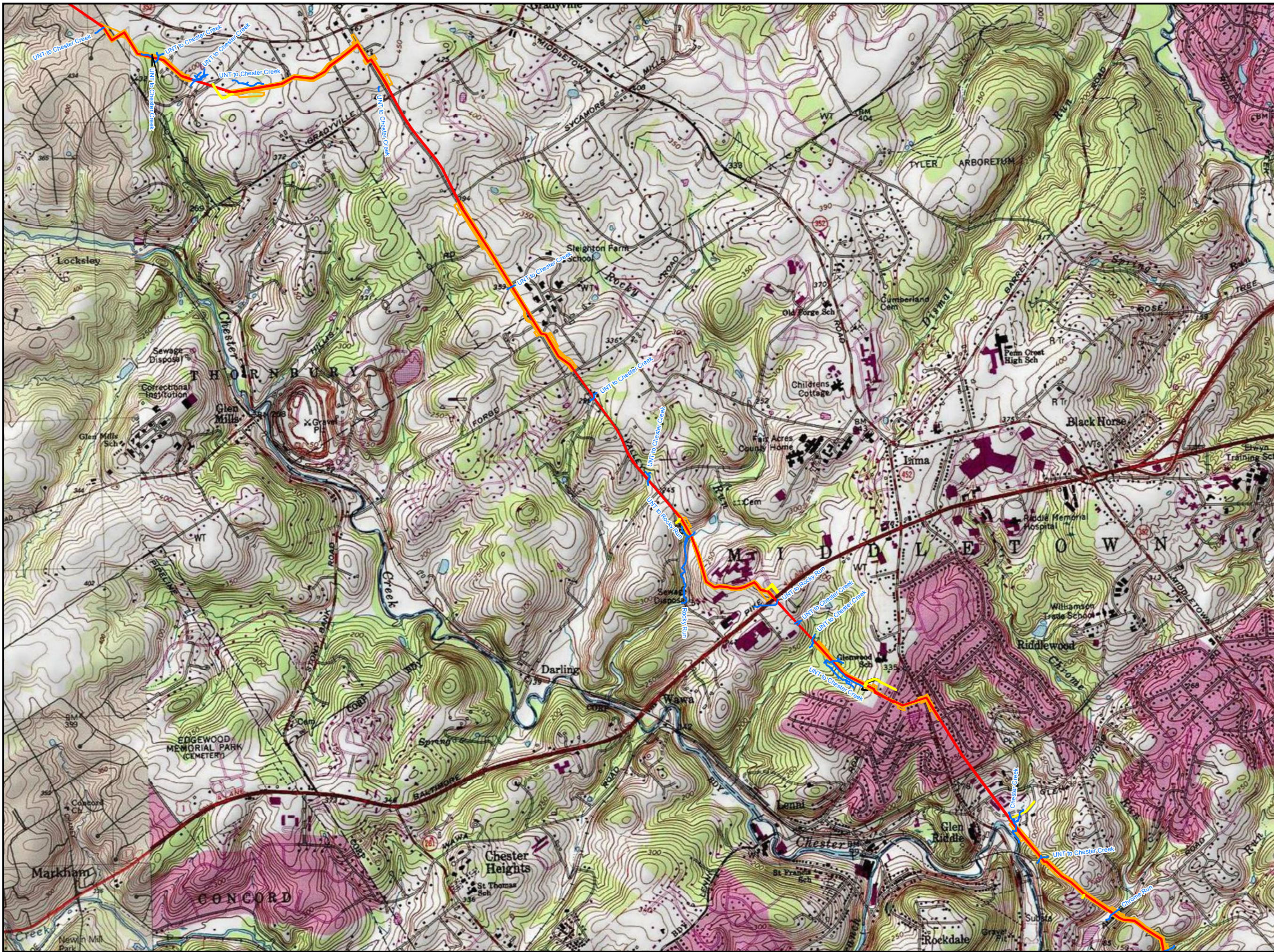
PROJECT LOCATION MAP
ATTACHMENT 1-4
PENNSYLVANIA PIPELINE PROJECT
NOVEMBER 12, 2016 ALIGNMENT
SUNOCO LOGISTICS, L.P.
CHESTER, DELAWARE COUNTY,
PENNSYLVANIA



Notes:

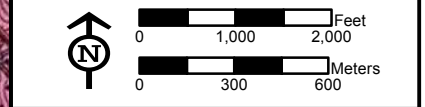
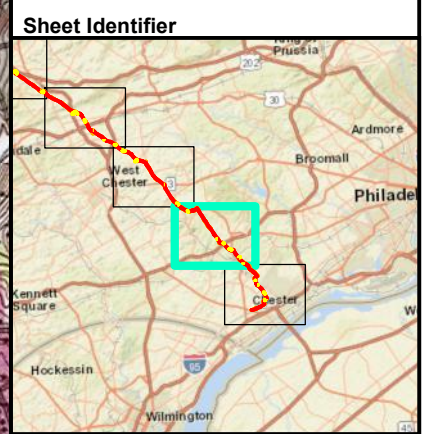
- 1) Topographic map provided by ESRI's ArcGIS Online USA Topo Maps map service (© 2013 National Geographic Society, I-cubed).
- 2) Quadrangles being displayed are Malvern, West Chester

P:\GIS\SUNOCO\MARINER EAST 2\MXD\PPP_PCS\MIP\PIPELINE_PCS\M_SOUTH_EAST_USGS_RECEIVINGSTREAMS.MXD 11/17/16 JN



Legend

- Stream
- Alignment Centerline
- Access Road
- Limit of Disturbance
- Block Valve/Station

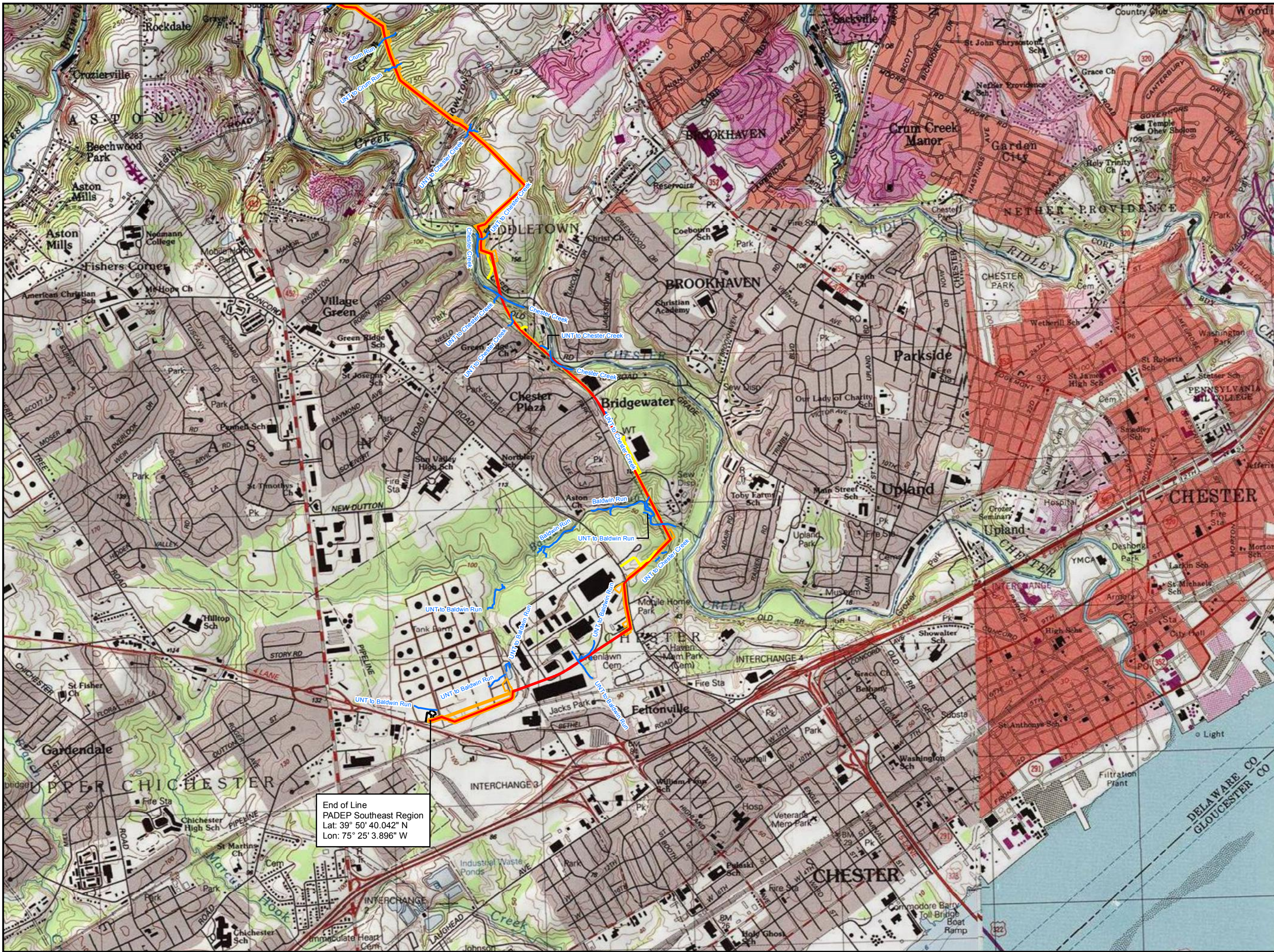


**PROJECT LOCATION MAP
ATTACHMENT 1-5
PENNSYLVANIA PIPELINE PROJECT
NOVEMBER 12, 2016 ALIGNMENT
SUNOCO LOGISTICS, L.P.
DELAWARE COUNTY,
PENNSYLVANIA**



Notes:
 1) Topographic map provided by ESRI's ArcGIS Online USA Topo Maps map service (© 2013 National Geographic Society, i-cubed).
 2) Quadrangles being displayed are Media, West Chester

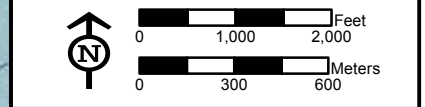
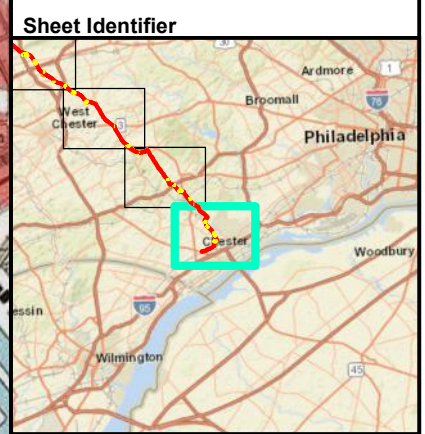
FGH:\P\GIS\SUNOCO\MARINER EAST 2\MXD\PPP_PCS\MIP\PIPELINE_PCS\M_SOUTH_EAST_USGS_RECEIVINGSTREAMS.MXD 11/17/16 JN



Legend

- Stream
- Alignment Centerline
- Access Road
- Limit of Disturbance
- Block Valve/Station

End of Line
 PADEP Southeast Region
 Lat: 39° 50' 40.042" N
 Lon: 75° 25' 3.896" W



PROJECT LOCATION MAP
 ATTACHMENT 1-6
 PENNSYLVANIA PIPELINE PROJECT
 NOVEMBER 12, 2016 ALIGNMENT
 SUNOCO LOGISTICS, L.P.
 DELAWARE COUNTY,
 PENNSYLVANIA



Notes:
 1) Topographic map provided by ESRI's ArcGIS Online USA Topo Maps map service (© 2013 National Geographic Society, i-cubed).
 2) Quadrangles being displayed are Media, Marcus Hook

FGH:\P\GIS\SUNOCO\MARINER_EAST_2M\XD\PPP_PCSM\PIPELINE_PCSM_SOUTH_EAST_USGS_RECEIVINGSTREAMS.MXD 11/17/16 JN