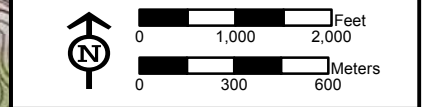
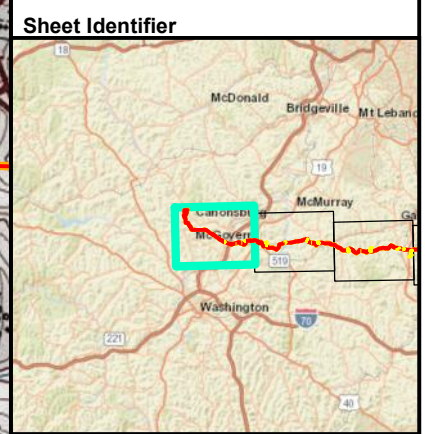


Start of Line
PADEP Southwest Region
Lat: 40° 15' 59.27" N
Lon: 80° 15' 44.46" W

Legend

- Stream
- Alignment Centerline
- Access Road
- Limit of Disturbance
- Block Valve/Station

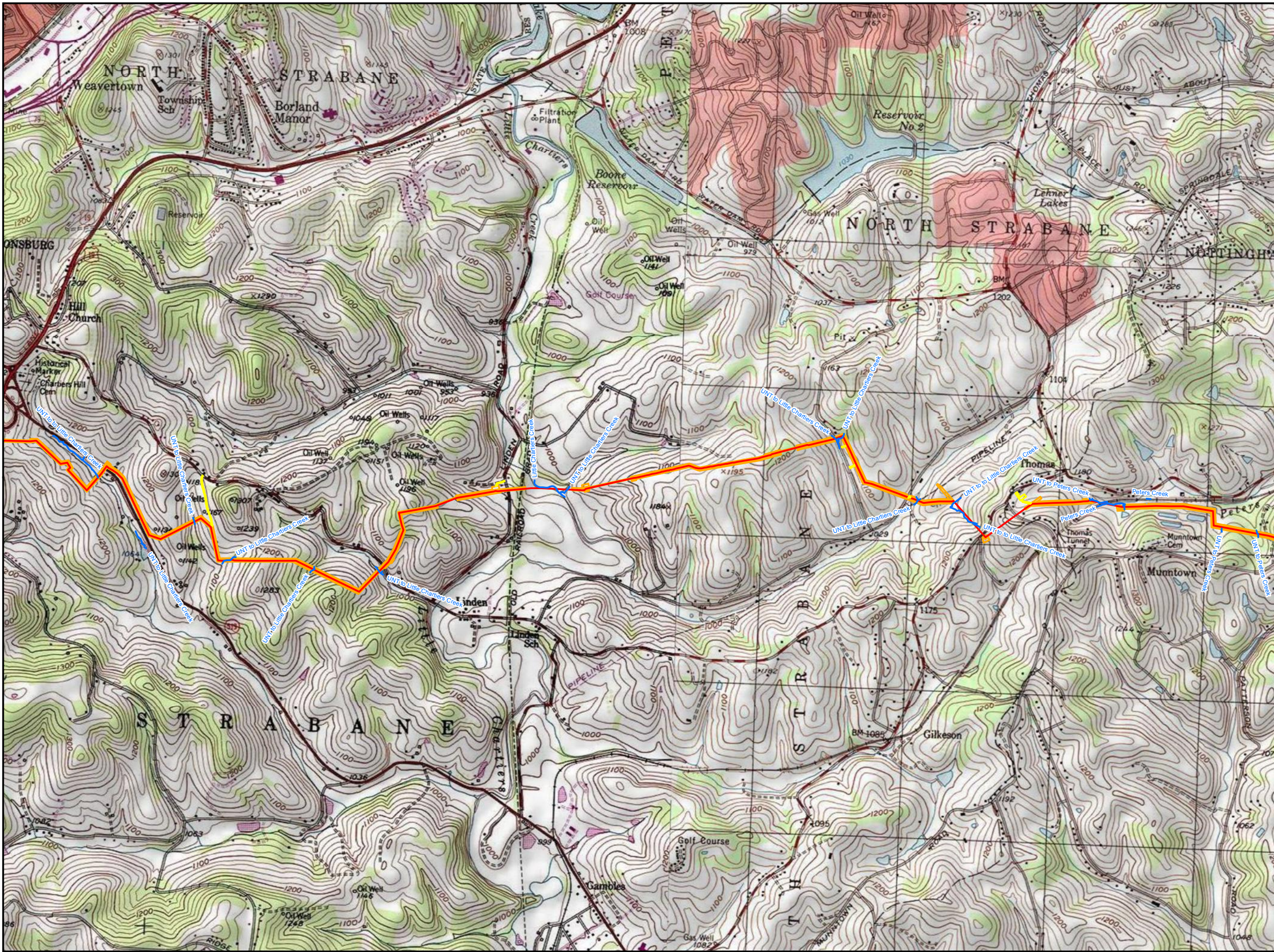


PROJECT LOCATION MAP
ATTACHMENT 1-1
PENNSYLVANIA PIPELINE PROJECT
NOVEMBER 12, 2016 ALIGNMENT
SUNOCO LOGISTICS, L.P.
WASHINGTON COUNTY,
PENNSYLVANIA



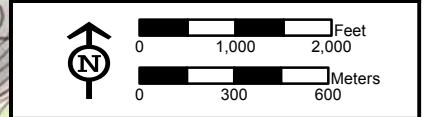
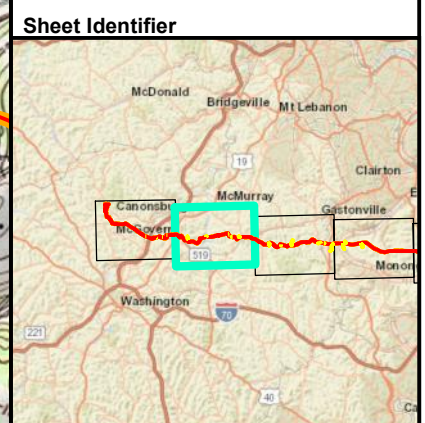
Notes:
1) Topographic map provided by ESRI's ArcGIS Online USA Topo Maps map service (© 2013 National Geographic Society, i-cubed).
2) Quadrangle(s) displayed are Canonsburg, Midway, Washington E., Washington W..

FGH_P:\GIS\SUNOCO\MARINER_EAST_2M\XDRPPP_PCSM\PIPELINE_PCSM_SOUTH\WEST_USGS_RECEIVINGSTREAMS\MXD_111716.SP



Legend

- Stream
- Alignment Centerline
- Access Road
- Limit of Disturbance
- Block Valve/Station

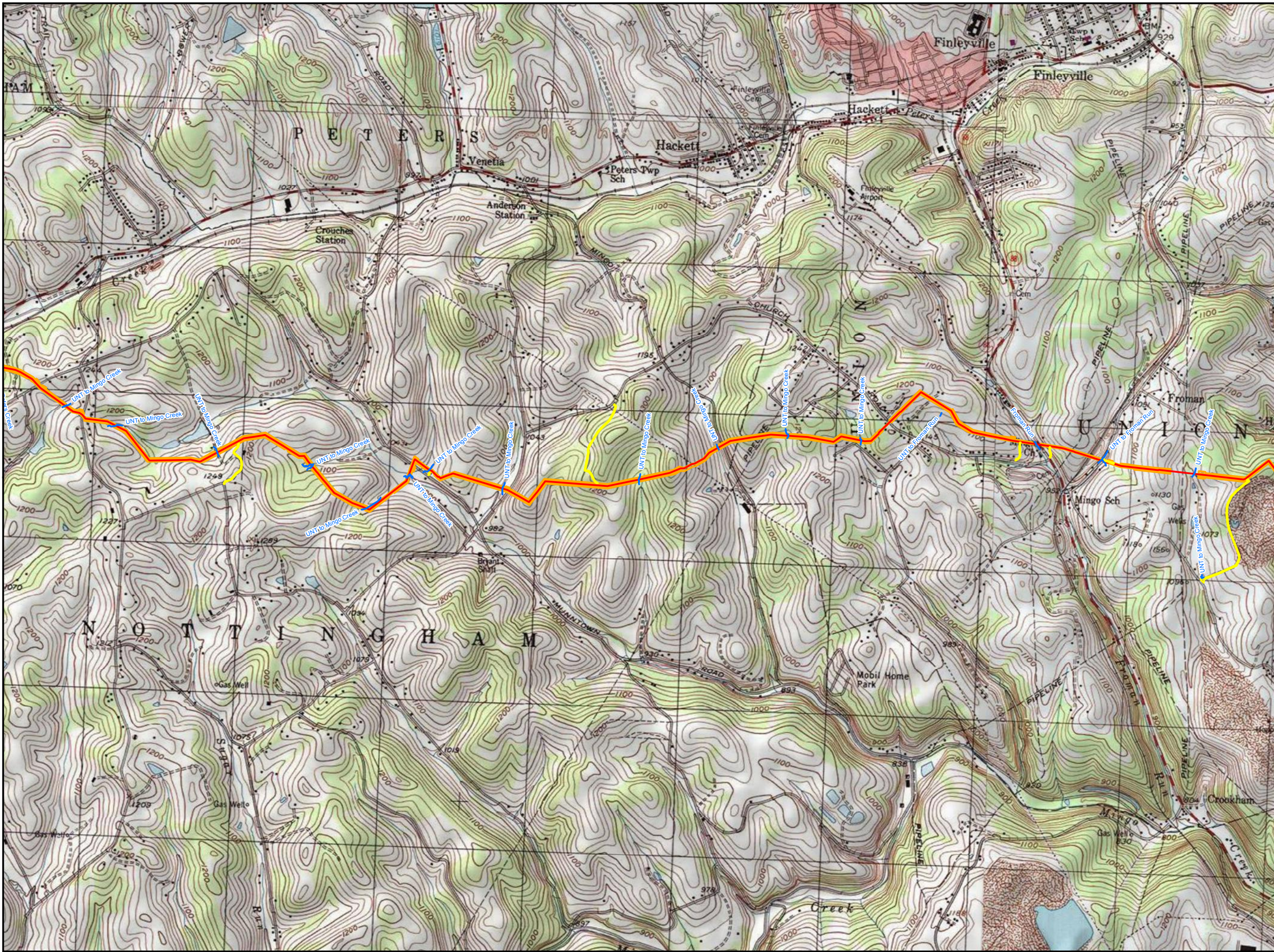


**PROJECT LOCATION MAP
ATTACHMENT 1-2
PENNSYLVANIA PIPELINE PROJECT
NOVEMBER 12, 2016 ALIGNMENT
SUNOCO LOGISTICS, L.P.
WASHINGTON COUNTY,
PENNSYLVANIA**



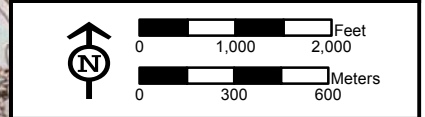
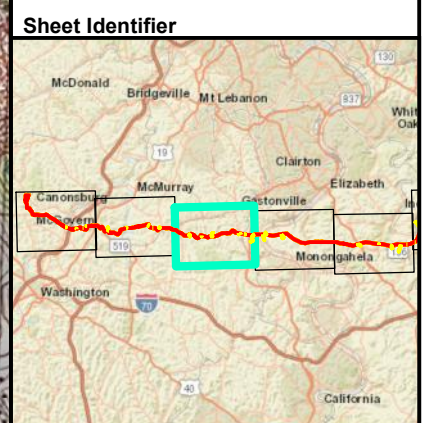
Notes:
 1) Topographic map provided by ESRI's ArcGIS Online USA Topo Maps map service (© 2013 National Geographic Society, i-cubed).
 2) Quadrangle(s) displayed are Hackett, Washington East.

FGH_P:\GIS\SUNOCO\MARINER_EAST_2M\XDRPPP_PC\SMPIPELINE_PCSM_SOUTHWEST_USGS_RECEIVINGSTREAMS\MXD_111716_SIP



Legend

- Stream
- Alignment Centerline
- Access Road
- Limit of Disturbance
- Block Valve/Station

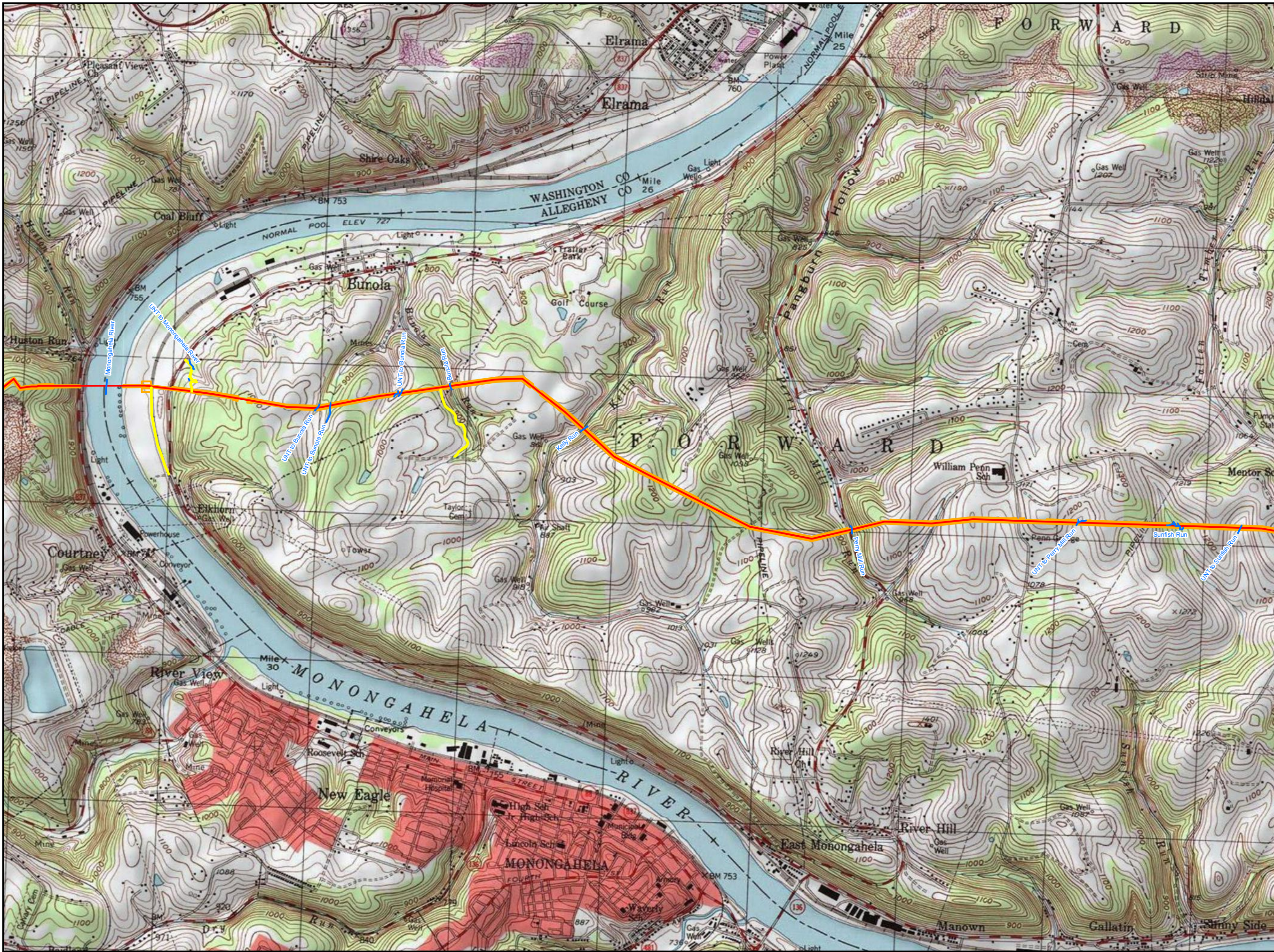


**PROJECT LOCATION MAP
ATTACHMENT 1-3
PENNSYLVANIA PIPELINE PROJECT
NOVEMBER 12, 2016 ALIGNMENT
SUNOCO LOGISTICS, L.P.
WASHINGTON COUNTY,
PENNSYLVANIA**



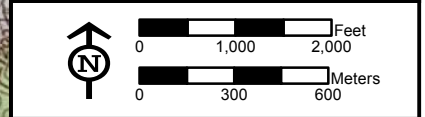
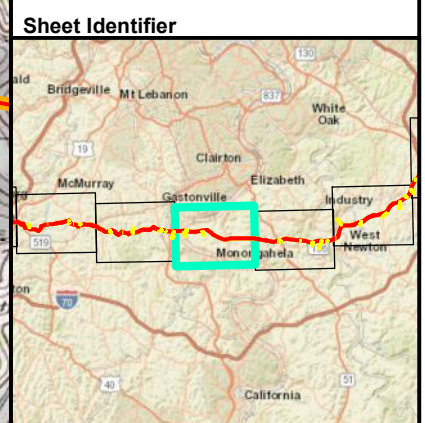
Notes:
 1) Topographic map provided by ESRI's ArcGIS Online USA Topo Maps map service (© 2013 National Geographic Society, i-cubed).
 2) Quadrangle(s) displayed are Hackett, Monongahela.

FGH_P:\GIS\SUNOCO\MARINER_EAST_2M\XDRPP\PCSM\PIPELINE_PCSM_SOUTHWEST_USGS_RECEIVINGSTREAMS\MXD\111716.SP



Legend

- Stream
- Alignment Centerline
- Access Road
- Limit of Disturbance
- Block Valve/Station



PROJECT LOCATION MAP
ATTACHMENT 1-4
PENNSYLVANIA PIPELINE PROJECT
NOVEMBER 12, 2016 ALIGNMENT
SUNOCO LOGISTICS, L.P.
WASHINGTON, ALLEGHENY COUNTY,
PENNSYLVANIA



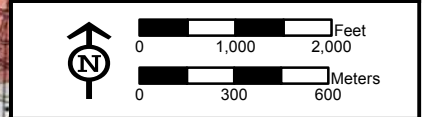
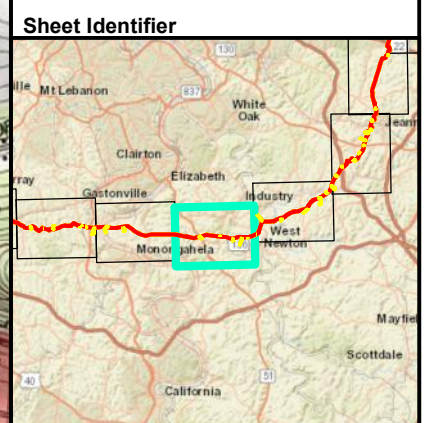
Notes:
 1) Topographic map provided by ESRI's ArcGIS Online USA Topo Maps map service (© 2013 National Geographic Society, i-cubed).
 2) Quadrangle(s) displayed are Monongahela.

PGH_P015UNOCO/MARINER_EAST_2MXDPPP_PCSM/PIPELINE_PCSM_SOUTHWEST_USGS_RECEIVINGSTREAMS.MXD 11/17/16 SP



Legend

- Stream
- Alignment Centerline
- Access Road
- Limit of Disturbance
- Block Valve/Station

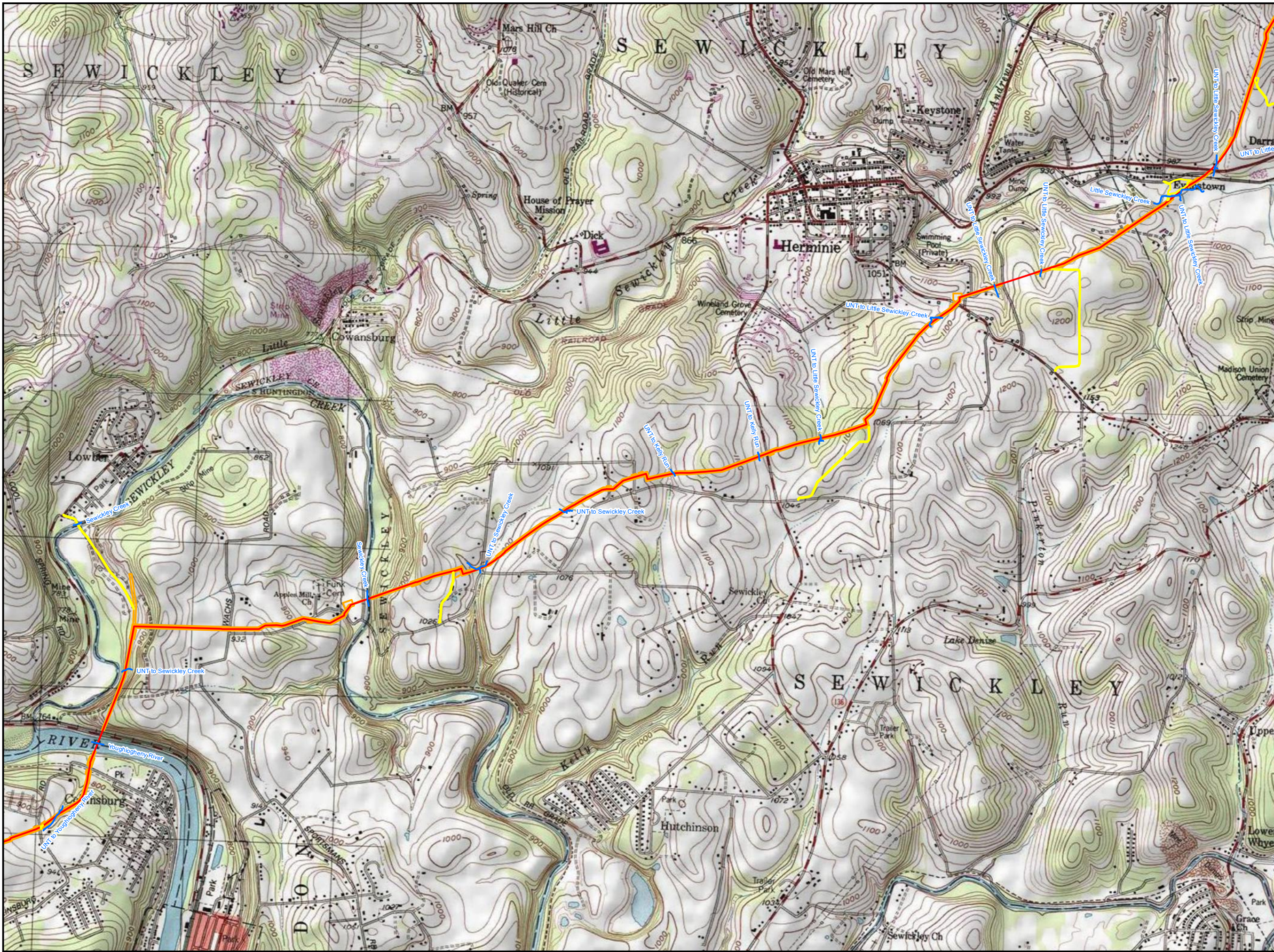


PROJECT LOCATION MAP
ATTACHMENT 1-5
PENNSYLVANIA PIPELINE PROJECT
NOVEMBER 12, 2016 ALIGNMENT
SUNOCO LOGISTICS, L.P.
ALLEGHENY, WESTMORELAND COUNTY,
PENNSYLVANIA



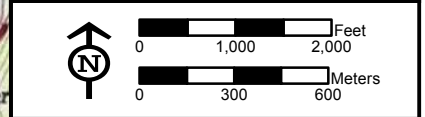
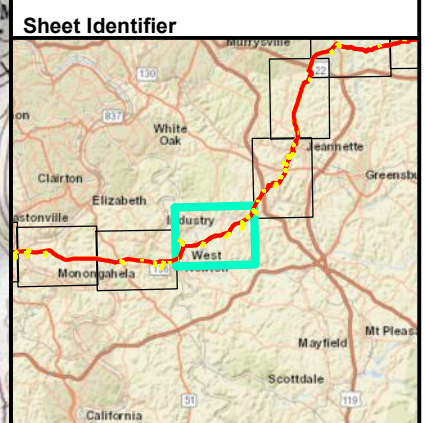
Notes:
 1) Topographic map provided by ESRI's ArcGIS
 Online USA Topo Maps map service © 2013
 National Geographic Society, I-cubed.
 2) Quadrangle(s) displayed are Donora, McKeesport,
 Monongahela.

P:\GIS\SUNOCO\MARINER EAST 2\MD\PPP_PCSM\PIPELINE_PCSM_SOUTH\WEST_USGS_RECEIVINGSTREAMS\MXD 111716.PP



Legend

- Stream
- Alignment Centerline
- Access Road
- Limit of Disturbance
- Block Valve/Station



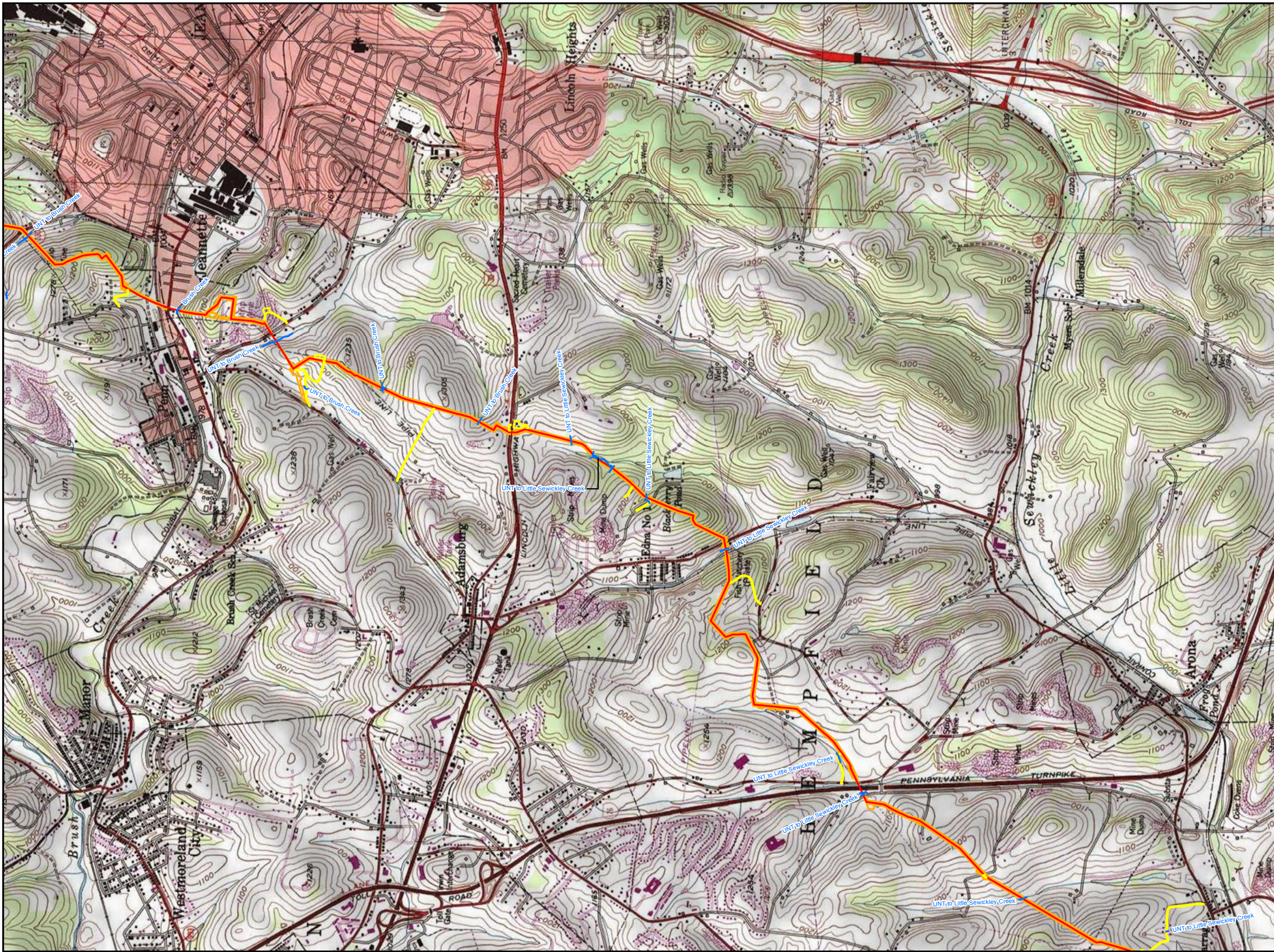
PROJECT LOCATION MAP
ATTACHMENT 1-6
PENNSYLVANIA PIPELINE PROJECT
NOVEMBER 12, 2016 ALIGNMENT
SUNOCO LOGISTICS, L.P.
WESTMORELAND COUNTY,
PENNSYLVANIA



Notes:

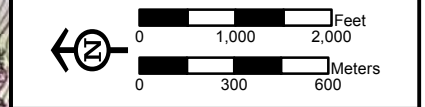
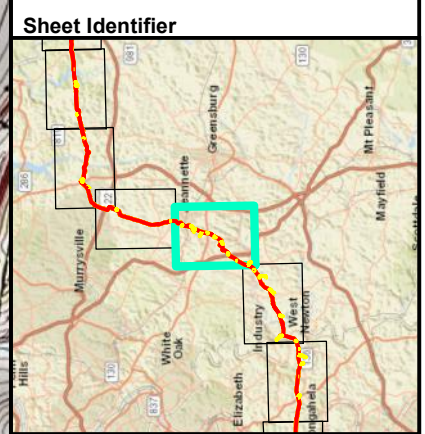
- 1) Topographic map provided by ESRI's ArcGIS Online USA Topo Maps map service (© 2013 National Geographic Society, i-cubed).
- 2) Quadrangle(s) displayed are Donora, Irwin, McKeesport, Smithton.

P:\GIS\SUNOCO\MARINER EAST 2\MXD\PPP_PCS\MIPENPIPELINE_PCS\M_SOUTHWEST_USGS_RECEIVINGSTREAMS.MXD 11/17/16 SP



Legend

- Stream
- Alignment Centerline
- Access Road
- Limit of Disturbance
- Block Valve/Station

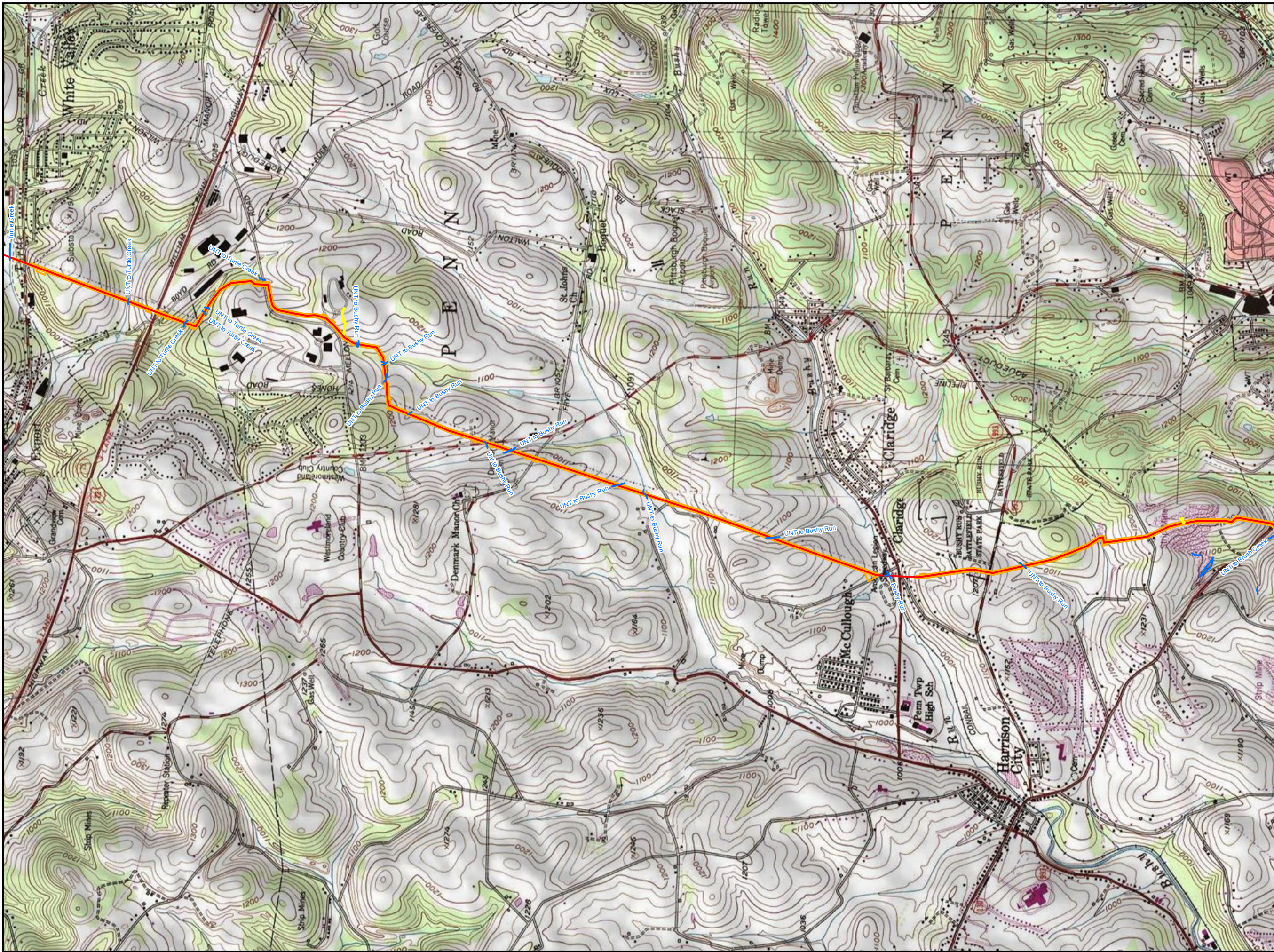


PROJECT LOCATION MAP
ATTACHMENT 1-7
PENNSYLVANIA PIPELINE PROJECT
NOVEMBER 12, 2016 ALIGNMENT
SUNOCO LOGISTICS, L.P.
WESTMORELAND COUNTY,
PENNSYLVANIA



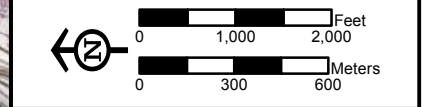
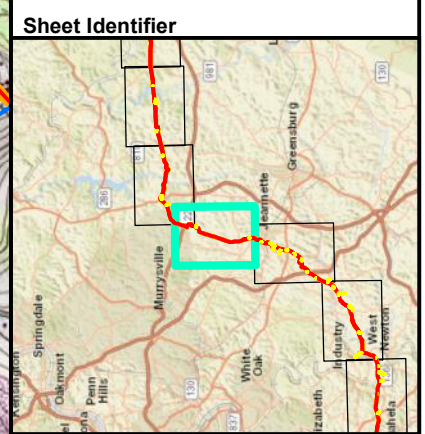
Notes:
 1) Topographic map provided by ESRI's ArcGIS Online USA Topo Maps map service (© 2013 National Geographic Society, i-cubed).
 2) Quadrangle(s) displayed are Irwin.

P:\GIS\SUNOCO\MARINER EAST 2\MD\PIPP\PCSM\PIPELINE_PCSM_SOUTHWEST_USGS_RECEIVINGSTREAMS\MXD 111716.SP



Legend

- Stream
- Alignment Centerline
- Access Road
- Limit of Disturbance
- Block Valve/Station

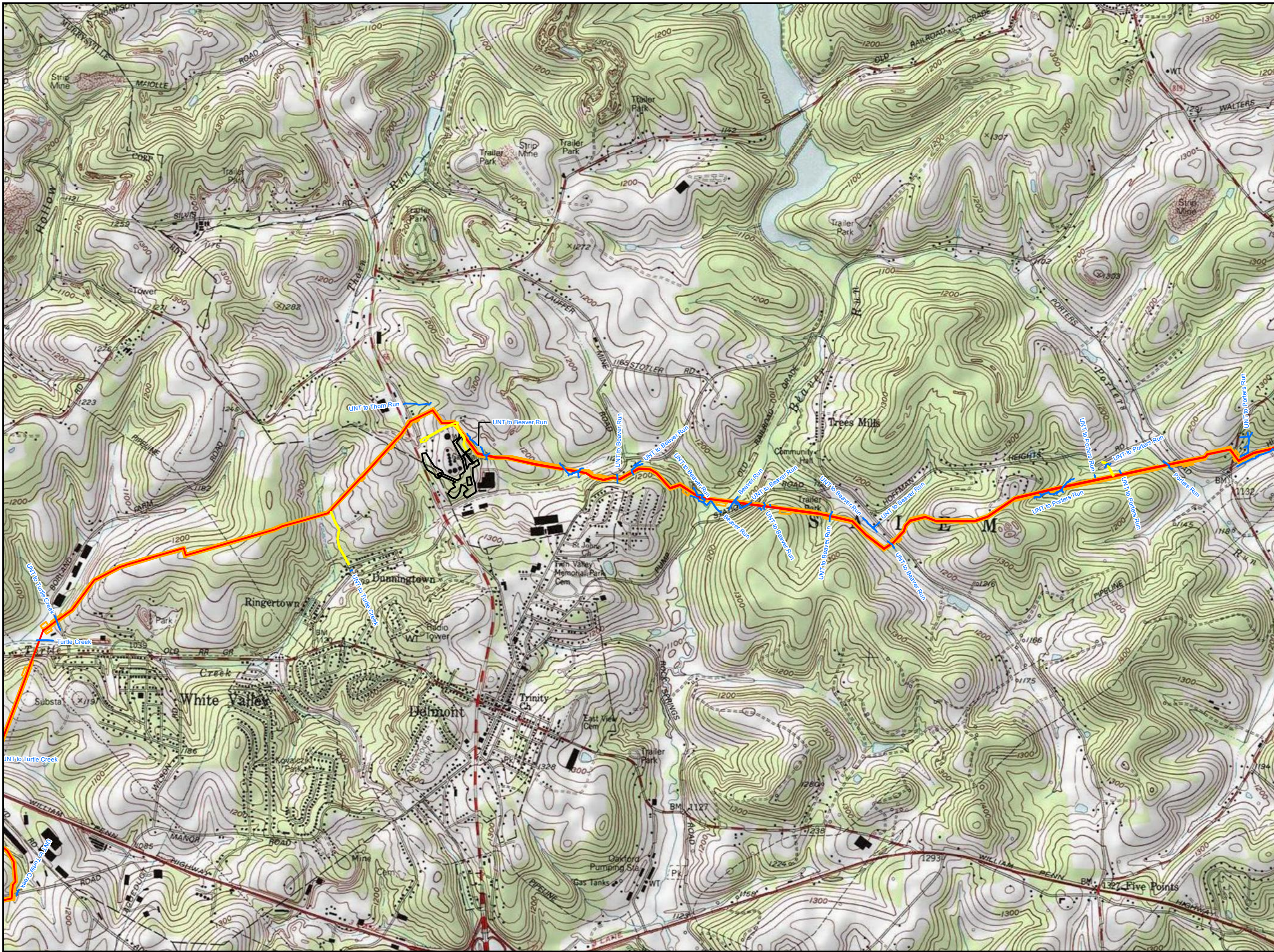


PROJECT LOCATION MAP
ATTACHMENT 1-8
PENNSYLVANIA PIPELINE PROJECT
NOVEMBER 12, 2016 ALIGNMENT
SUNOCO LOGISTICS, L.P.
WESTMORELAND COUNTY,
PENNSYLVANIA



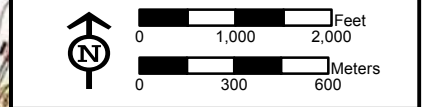
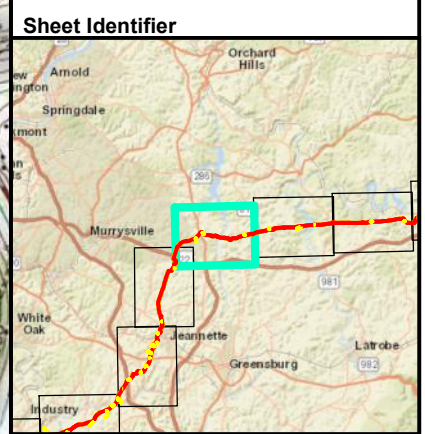
Notes:
 1) Topographic map provided by ESRI's ArcGIS Online USA Topo Maps map service © 2013 National Geographic Society, i-cubed.
 2) Quadrangle(s) displayed are Greensburg, Irwin.

P:\GIS\SUNOCO\MARINER EAST 2\MD\PPP_PCSM\PIPELINE_PCSM_SOUTH\WEST_USGS_RECEIVINGSTREAMS\MXD 111716.SP



Legend

- Stream
- Alignment Centerline
- Access Road
- Limit of Disturbance
- Block Valve/Station

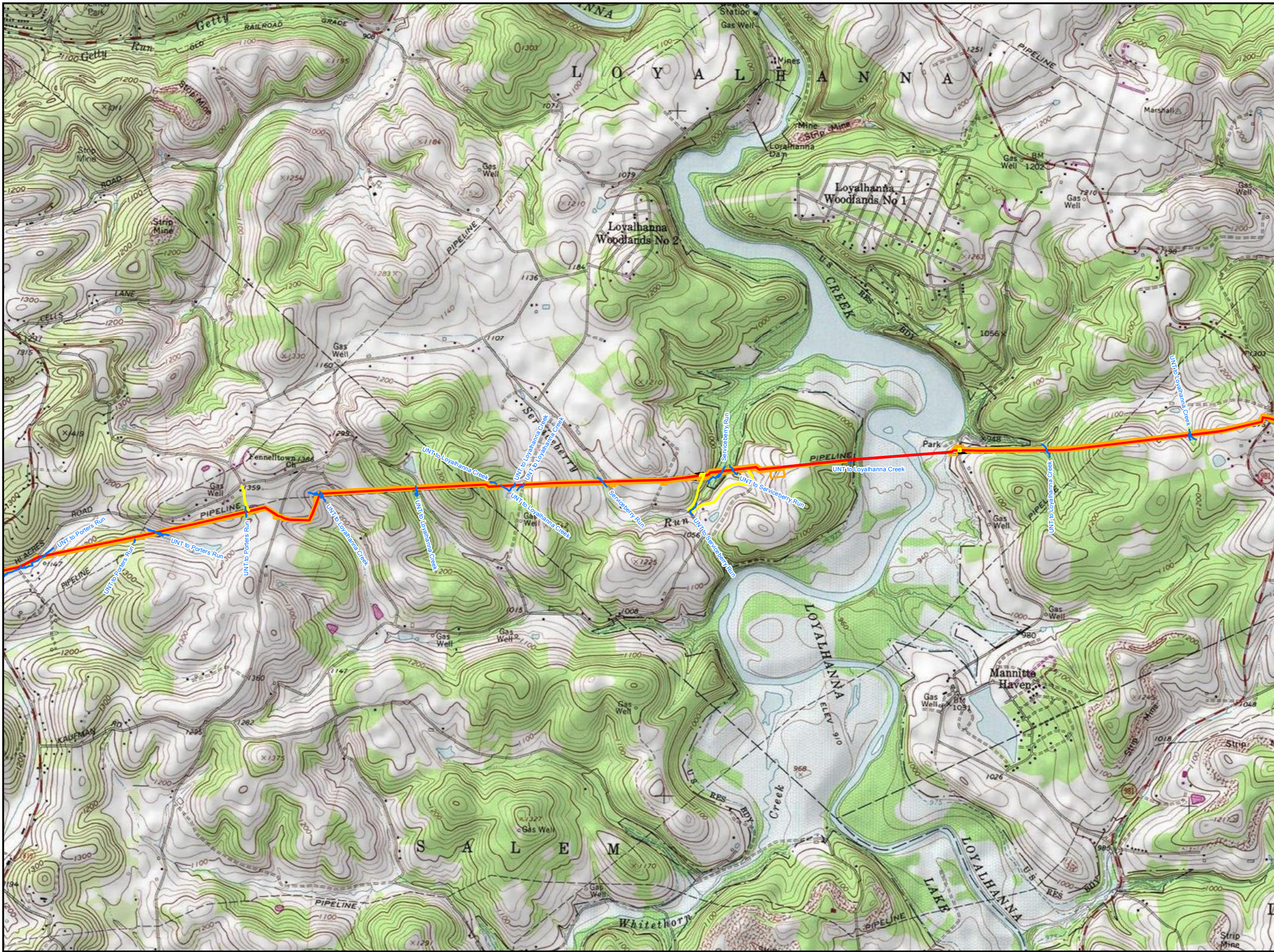


PROJECT LOCATION MAP
ATTACHMENT 1-9
PENNSYLVANIA PIPELINE PROJECT
NOVEMBER 12, 2016 ALIGNMENT
SUNOCO LOGISTICS, L.P.
WESTMORELAND COUNTY,
PENNSYLVANIA



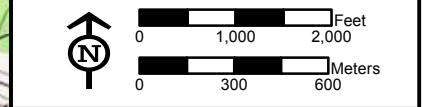
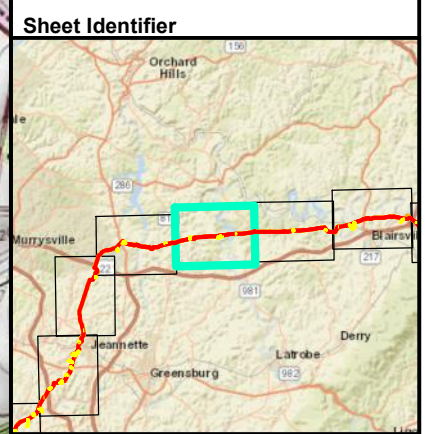
Notes:
 1) Topographic map provided by ESRI's ArcGIS Online USA Topo Maps map service (© 2013 National Geographic Society, i-cubed).
 2) Quadrangle(s) displayed are Greensburg, Irwin, Murrysville, Slickville.

P:\GIS\SUNOCO\MARINER EAST 2\MXD\PPP_PCS\MPIPENPIPELINE_PCSM_SOUTHWEST_USGS_RECEIVINGSTREAMS.MXD 11/17/16 SP



Legend

- Stream
- Alignment Centerline
- Access Road
- Limit of Disturbance
- Block Valve/Station

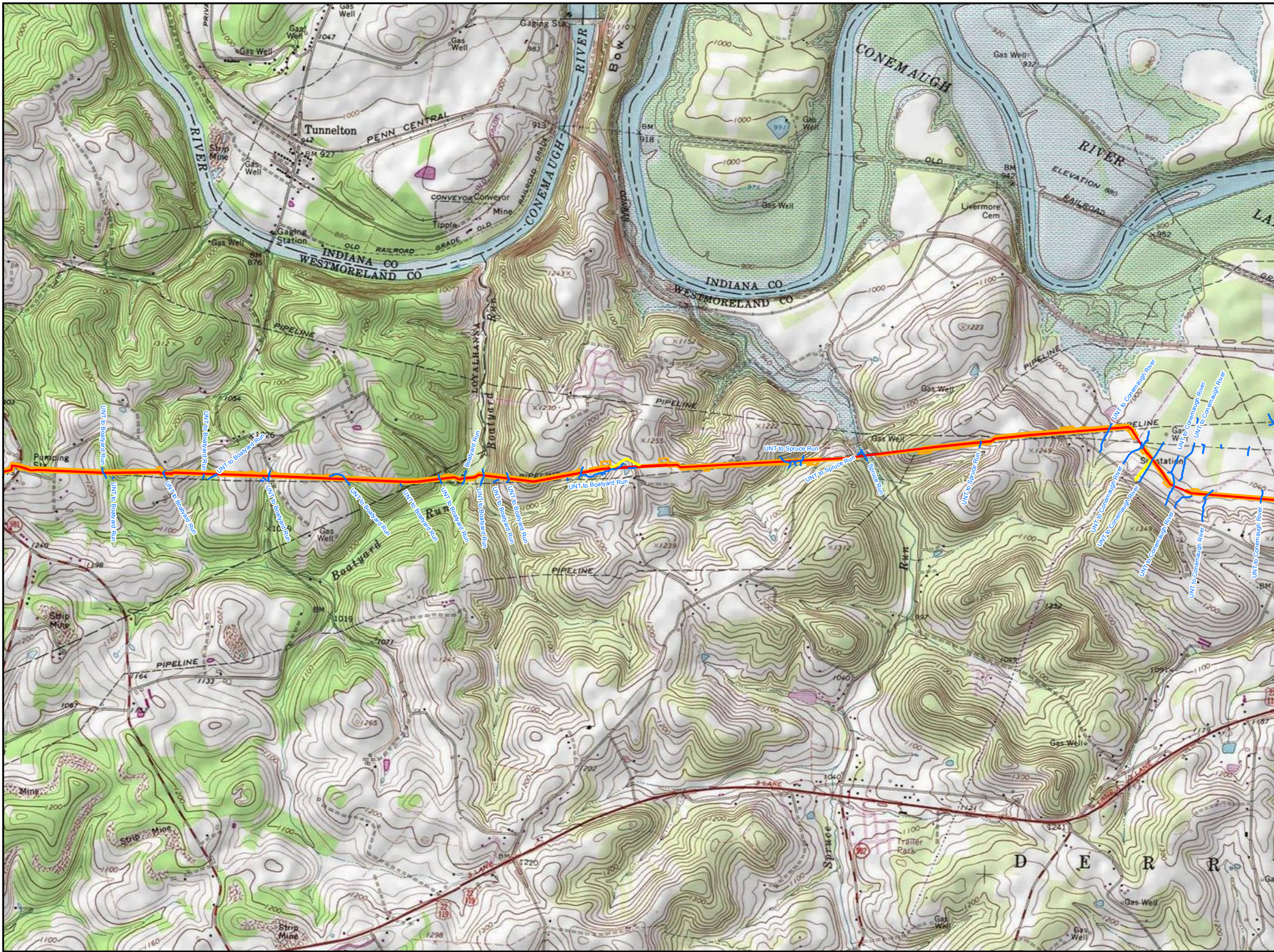


PROJECT LOCATION MAP
ATTACHMENT 1-10
PENNSYLVANIA PIPELINE PROJECT
NOVEMBER 12, 2016 ALIGNMENT
SUNOCO LOGISTICS, L.P.
WESTMORELAND COUNTY,
PENNSYLVANIA



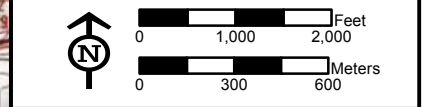
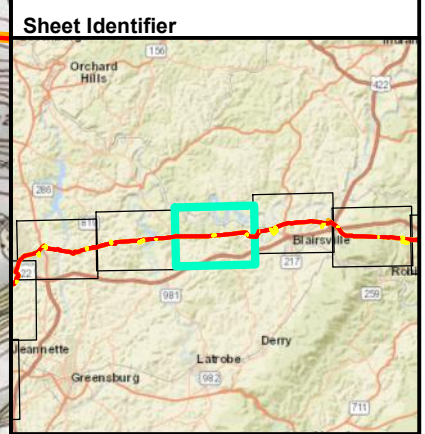
Notes:
 1) Topographic map provided by ESRI's ArcGIS Online USA Topo Maps map service (© 2013 National Geographic Society, i-cubed).
 2) Quadrangle(s) displayed are Murrsville, Slickville.

PGH_P:\GIS\SUNOCO\MARINER_EAST_2M\XD\PPP_PCS\MIPEN\PIPELINE_PCSM_SOUTHWEST_USGS_RECEIVINGSTREAMS\MXD_111716.SP



Legend

- Stream
- Alignment Centerline
- Access Road
- Limit of Disturbance
- Block Valve/Station

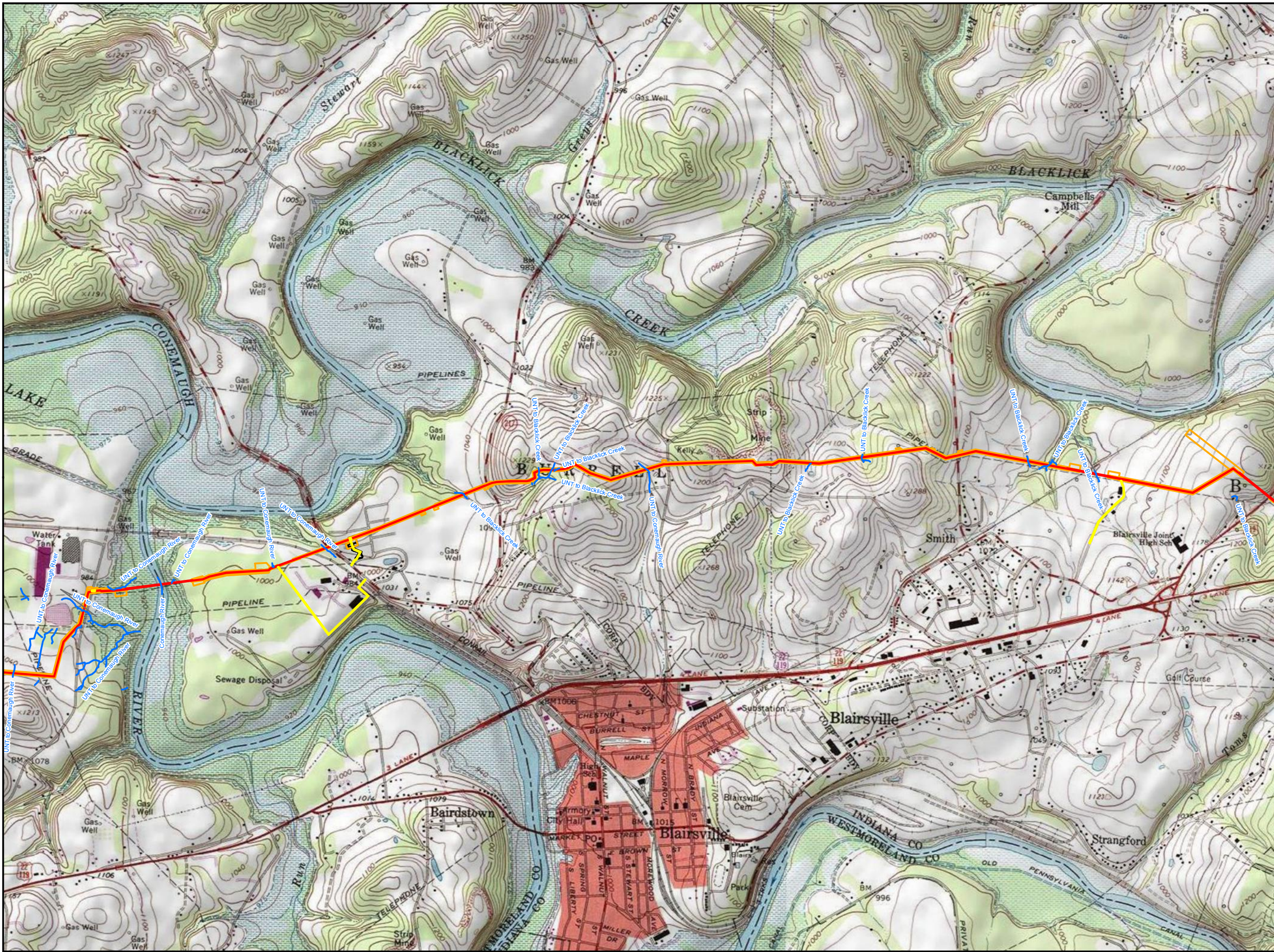


**PROJECT LOCATION MAP
ATTACHMENT 1-11
PENNSYLVANIA PIPELINE PROJECT
NOVEMBER 12, 2016 ALIGNMENT
SUNOCO LOGISTICS, L.P.
WESTMORELAND COUNTY,
PENNSYLVANIA**



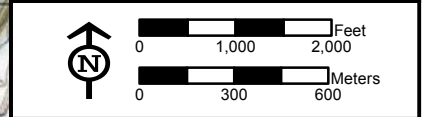
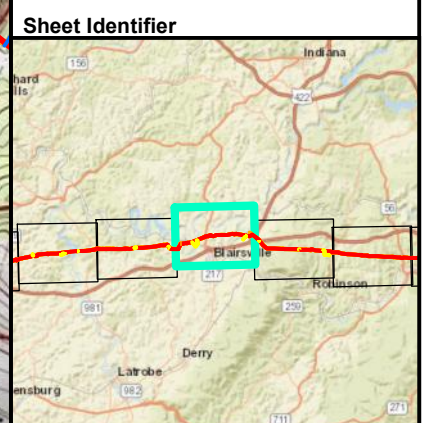
Notes:
 1) Topographic map provided by ESRI's ArcGIS Online USA Topo Maps map service (© 2013 National Geographic Society, i-cubed).
 2) Quadrangle(s) displayed are Salsburg, Slickville.

PGH_P015\SUNOCO\MARINER_EAST_2M\XD\PPP_PCS\MIPEN\PIPELINE_PCSM_SOUTH\WEST_USGS_RECEIVINGSTREAMS\MAD 111716 SP



Legend

- Stream
- Alignment Centerline
- Access Road
- Limit of Disturbance
- Block Valve/Station



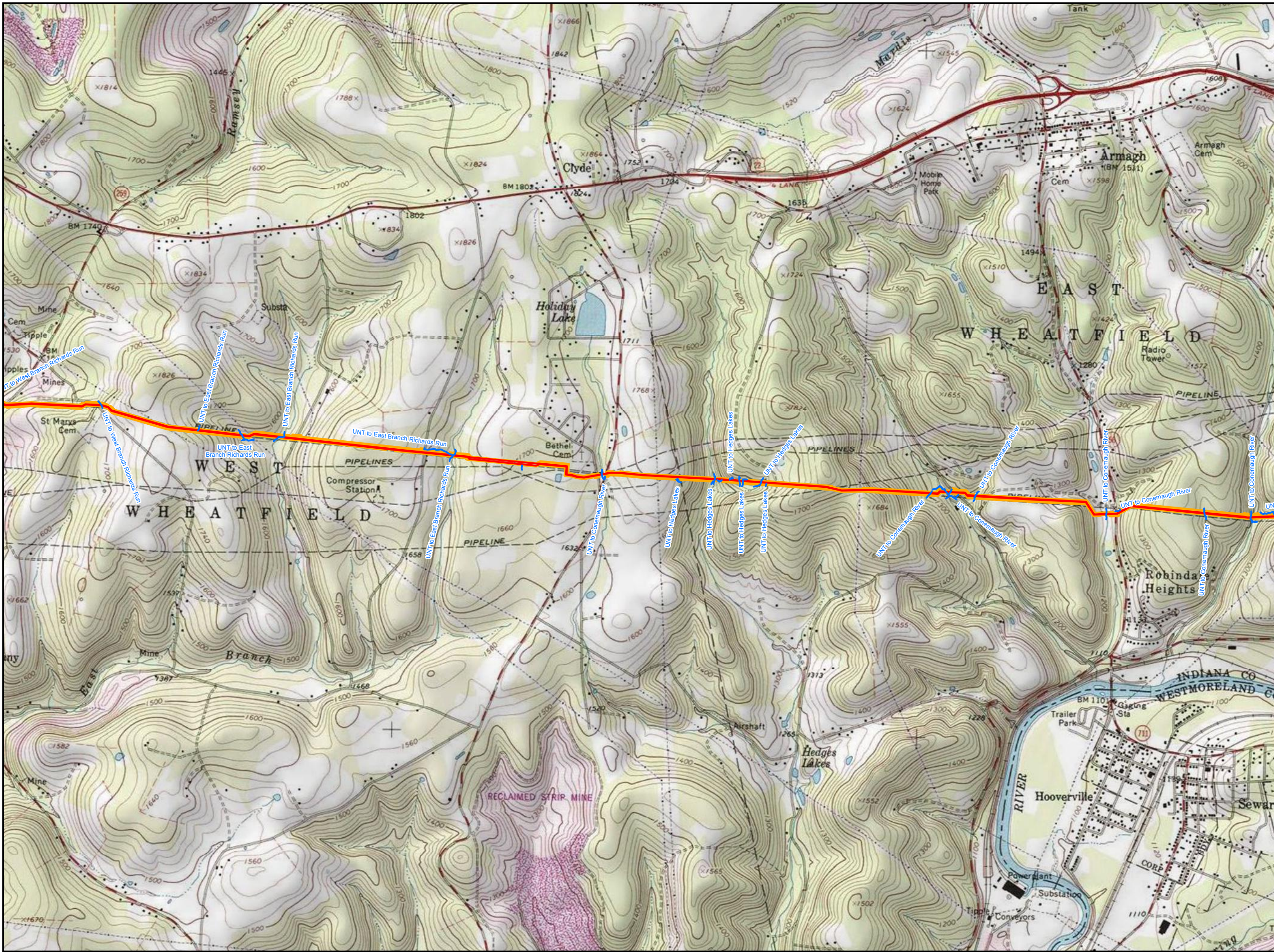
PROJECT LOCATION MAP
ATTACHMENT 1-12
PENNSYLVANIA PIPELINE PROJECT
NOVEMBER 12, 2016 ALIGNMENT
SUNOCO LOGISTICS, L.P.
WESTMORELAND, INDIANA COUNTY,
PENNSYLVANIA



Notes:

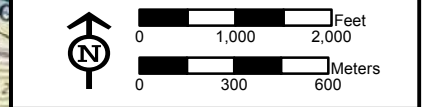
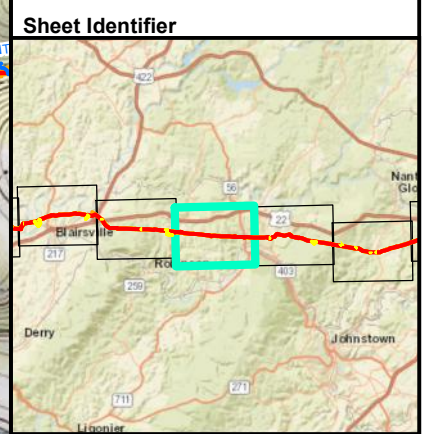
- 1) Topographic map provided by ESRI's ArcGIS Online USA Topo Maps map service © 2013 National Geographic Society, i-cubed).
- 2) Quadrangle(s) displayed are Blairsville, Saltsburg.

P:\GIS\SUNOCO\MARINER EAST 2\MXD\PPP_PCS\MPIPENPIPELINE_PCSM_SOUTHWEST_USGS_RECEIVINGSTREAMS.MXD 11/17/16 SP



Legend

- Stream
- Alignment Centerline
- Access Road
- Limit of Disturbance
- Block Valve/Station

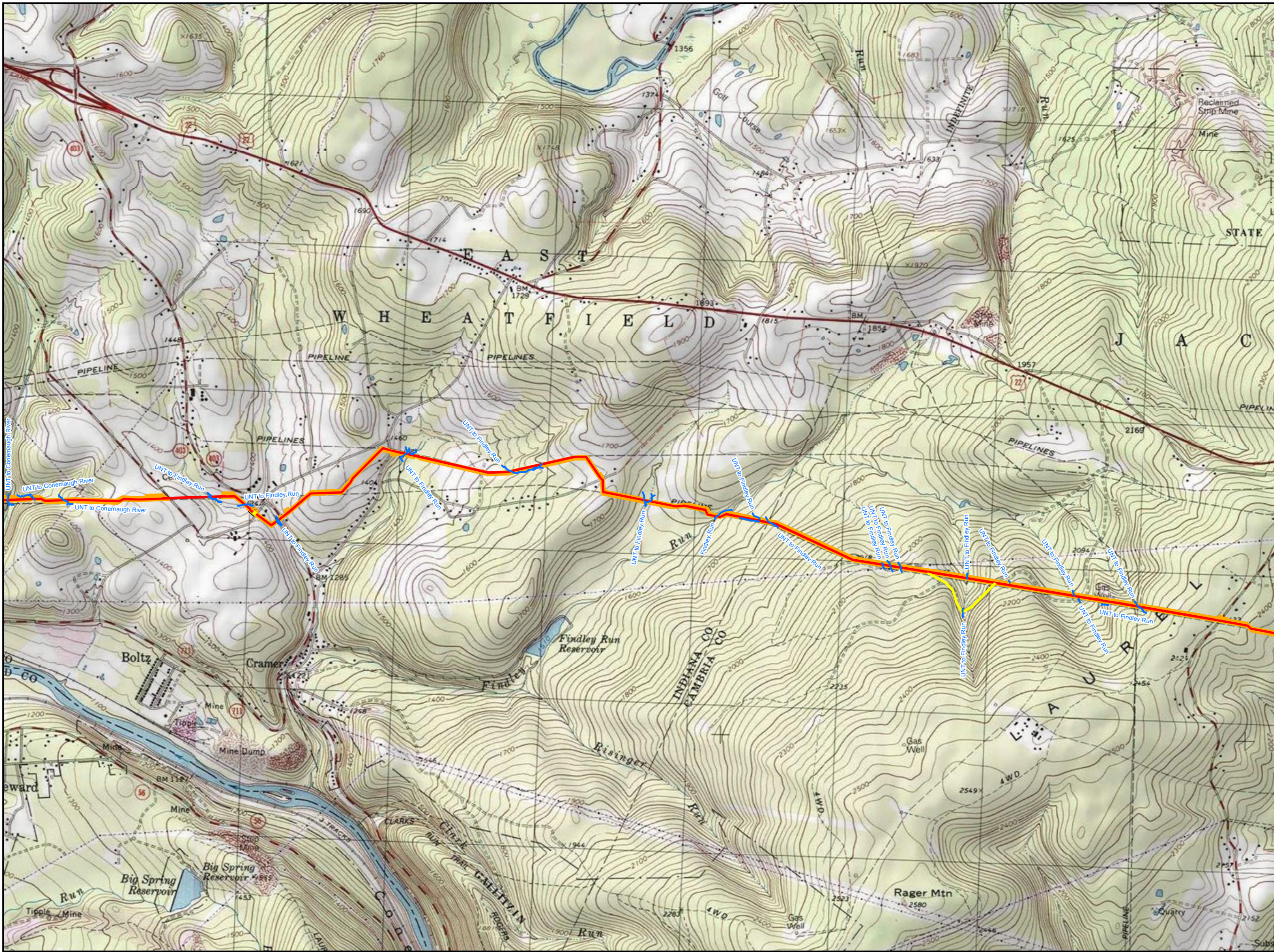


**PROJECT LOCATION MAP
ATTACHMENT 1-14
PENNSYLVANIA PIPELINE PROJECT
NOVEMBER 12, 2016 ALIGNMENT
SUNOCO LOGISTICS, L.P.
INDIANA COUNTY,
PENNSYLVANIA**



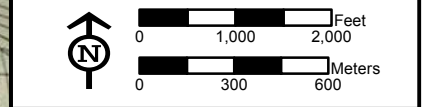
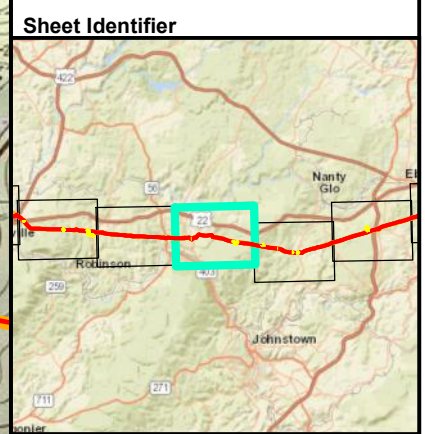
Notes:
 1) Topographic map provided by ESRI's ArcGIS Online USA Topo Maps map service (© 2013 National Geographic Society, i-cubed).
 2) Quadrangle(s) displayed are Bolivar.

P:\GIS\SUNOCO\MARINER EAST 2\MXD\PPP_PCSM\PIPELINE_PCSM_SOUTH\WEST_USGS_RECEIVINGSTREAMS\MXD 111716 SP



Legend

- Stream
- Alignment Centerline
- Access Road
- Limit of Disturbance
- Block Valve/Station



PROJECT LOCATION MAP
ATTACHMENT 1-15
PENNSYLVANIA PIPELINE PROJECT
NOVEMBER 12, 2016 ALIGNMENT
SUNOCO LOGISTICS, L.P.
INDIANA, CAMBRIA COUNTY,
PENNSYLVANIA



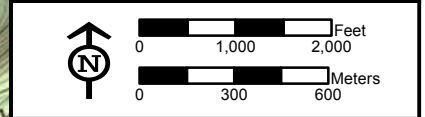
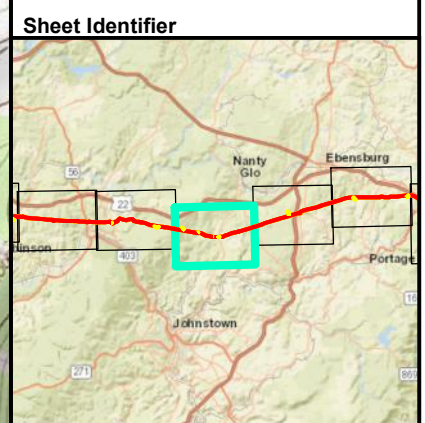
Notes:
 1) Topographic map provided by ESRI's ArcGIS Online USA Topo Maps map service (© 2013 National Geographic Society, i-cubed).
 2) Quadrangle(s) displayed are Bolivar, New Florence.

P:\GIS\SUNOCO\MARINER EAST 2\MXD\PPP_PCS\MIPEN\PIPELINE_PCSM_SOUTHWEST_USGS_RECEIVINGSTREAMS\MXD 111716.SP



Legend

- Stream
- Alignment Centerline
- Access Road
- Limit of Disturbance
- Block Valve/Station

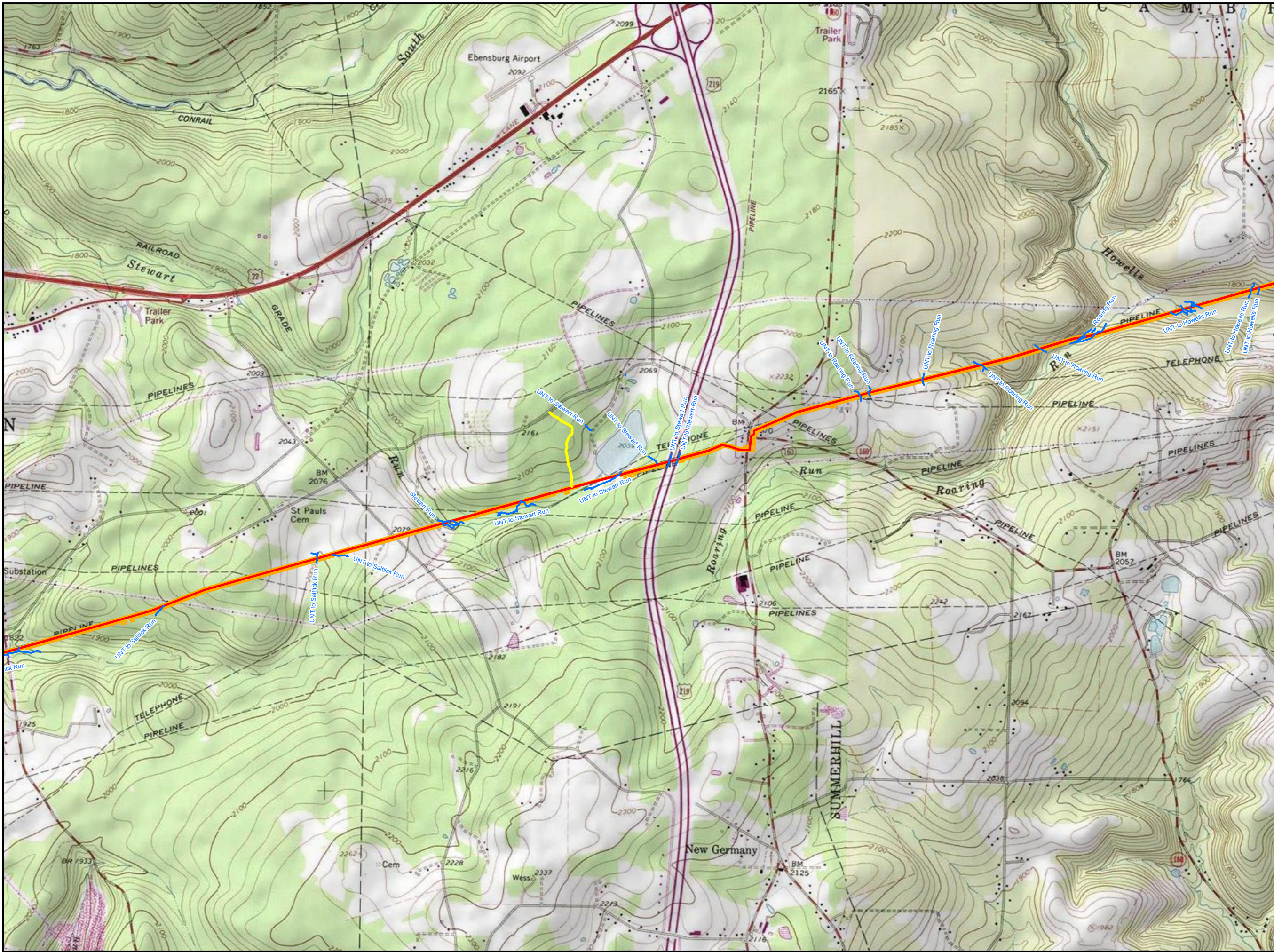


**PROJECT LOCATION MAP
ATTACHMENT 1-16
PENNSYLVANIA PIPELINE PROJECT
NOVEMBER 12, 2016 ALIGNMENT
SUNOCO LOGISTICS, L.P.
CAMBRIA COUNTY,
PENNSYLVANIA**



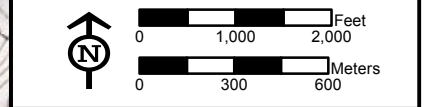
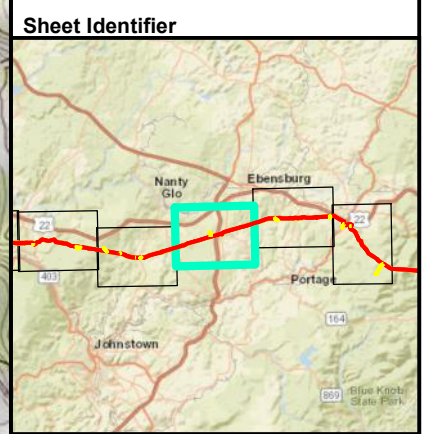
Notes:
 1) Topographic map provided by ESRI's ArcGIS Online USA Topo Maps map service (© 2013 National Geographic Society, i-cubed).
 2) Quadrangle(s) displayed are New Florence, Vintondale.

FGH_P:\GIS\SUNOCO\MARINER_EAST_2M\XDP\PPP_PCSM\PIPELINE_PCSM_SOUTHWEST_USGS_RECEIVINGSTREAMS\MXD_111716.SP



Legend

- Stream
- Alignment Centerline
- Access Road
- Limit of Disturbance
- Block Valve/Station

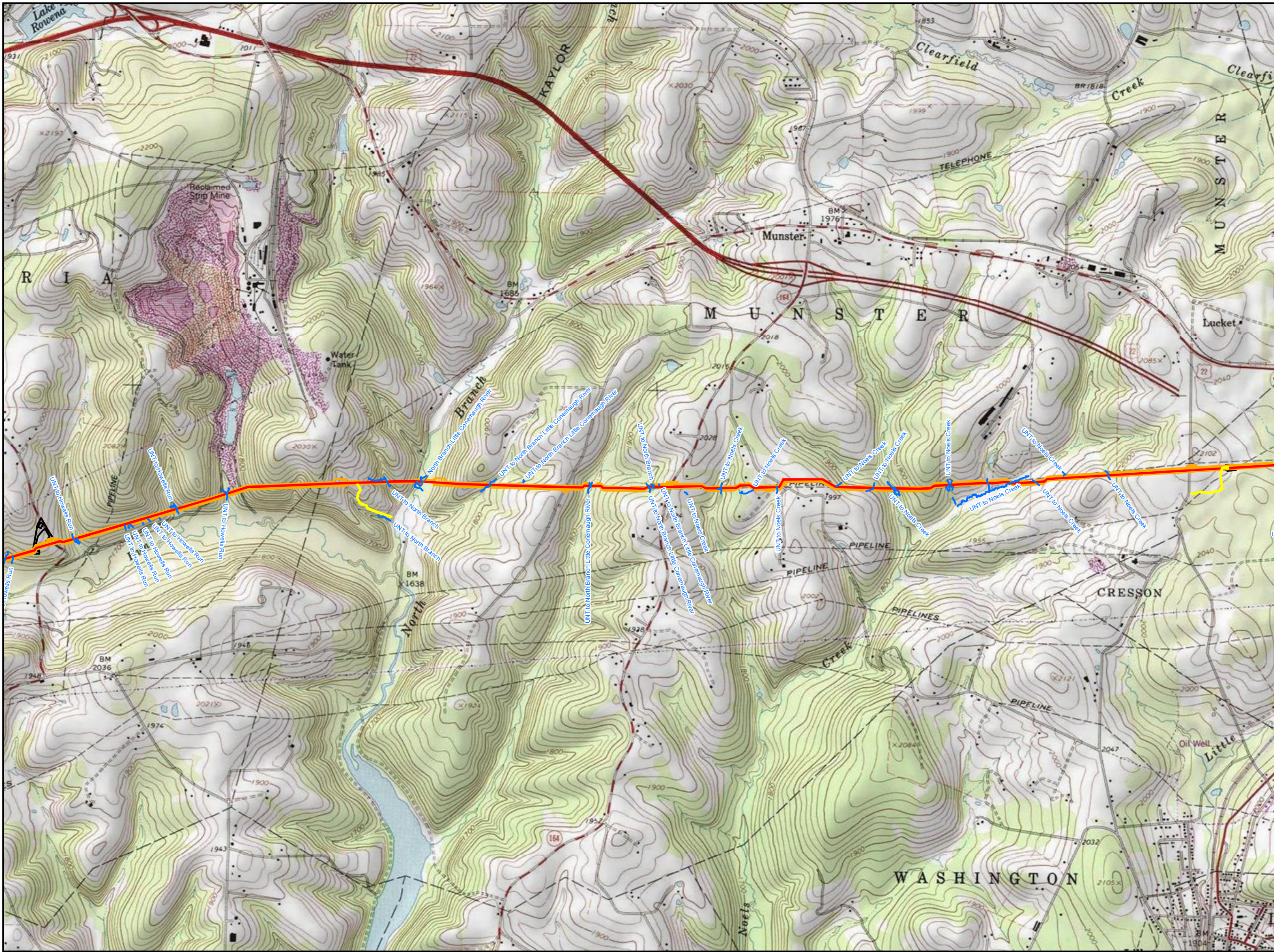


**PROJECT LOCATION MAP
ATTACHMENT 1-17
PENNSYLVANIA PIPELINE PROJECT
NOVEMBER 12, 2016 ALIGNMENT
SUNOCO LOGISTICS, L.P.
CAMBRIA COUNTY,
PENNSYLVANIA**



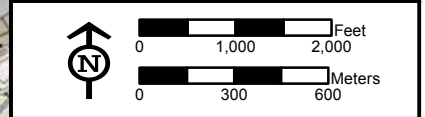
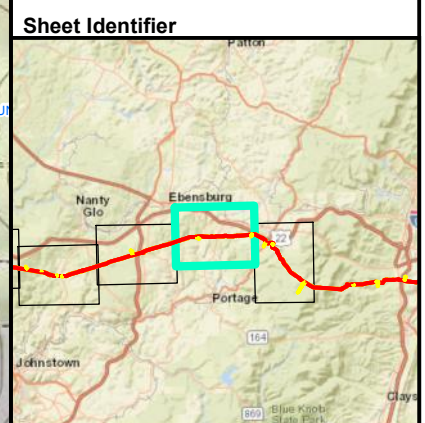
Notes:
 1) Topographic map provided by ESRI's ArcGIS Online USA Topo Maps map service (© 2013 National Geographic Society, i-cubed).
 2) Quadrangle(s) displayed are Nanty Glo, Vintondale.

PGH_P\GIS\SUNOCO\MARINER_EAST_2MXD\PPP_PCS\MPIP\PIPELINE_PCSM_SOUTHWEST_USGS_RECEIVINGSTREAMS.MXD 11/17/16 SP



Legend

- Stream
- Alignment Centerline
- Access Road
- Limit of Disturbance
- Block Valve/Station

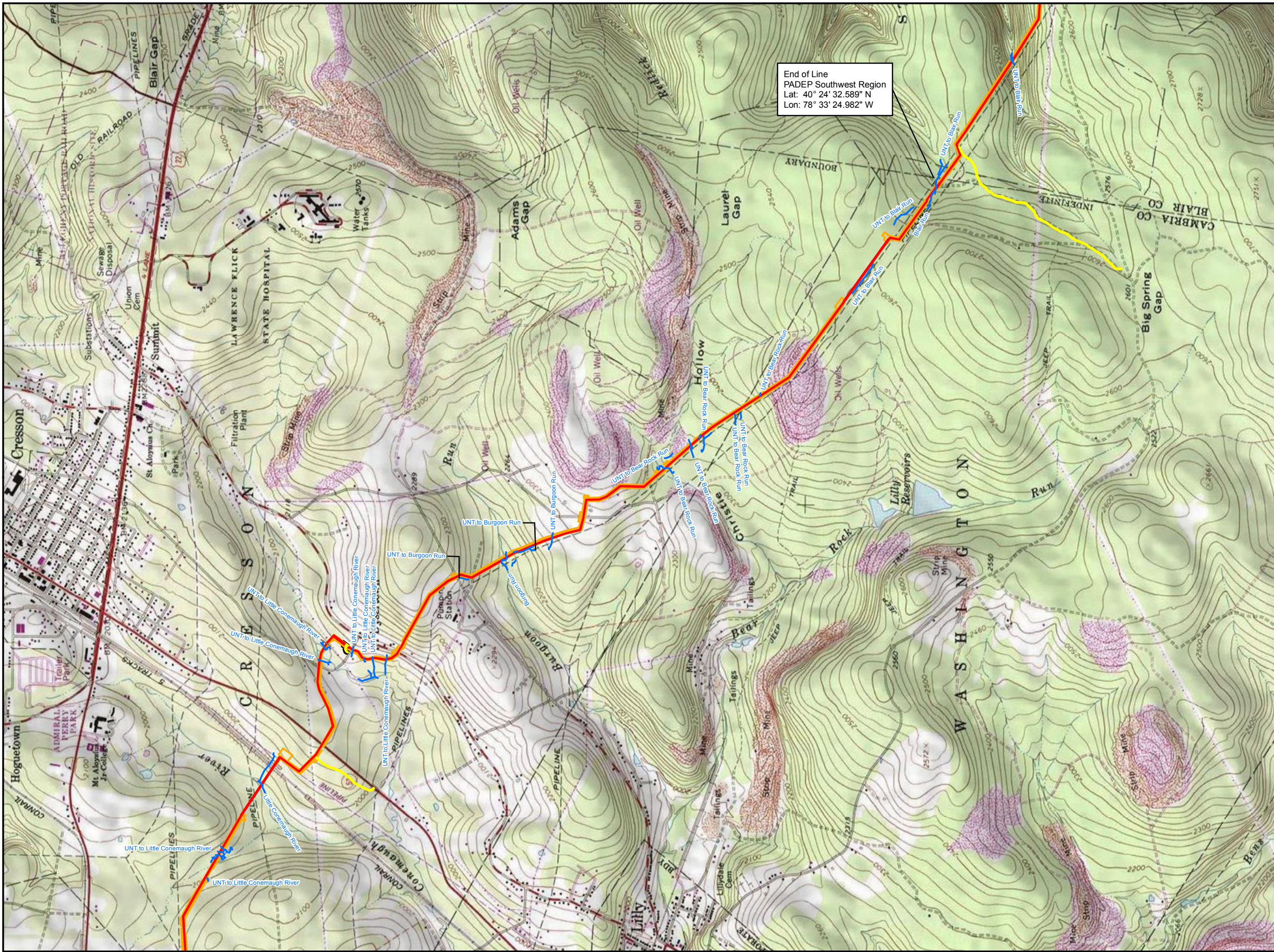


**PROJECT LOCATION MAP
ATTACHMENT 1-18
PENNSYLVANIA PIPELINE PROJECT
NOVEMBER 12, 2016 ALIGNMENT
SUNOCO LOGISTICS, L.P.
CAMBRIA COUNTY,
PENNSYLVANIA**



Notes:
 1) Topographic map provided by ESRI's ArcGIS Online USA Topo Maps map service (© 2013 National Geographic Society, i-cubed).
 2) Quadrangle(s) displayed are Ebensburg, Nanty Glo.

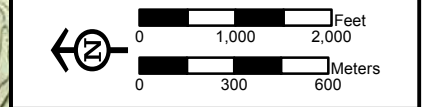
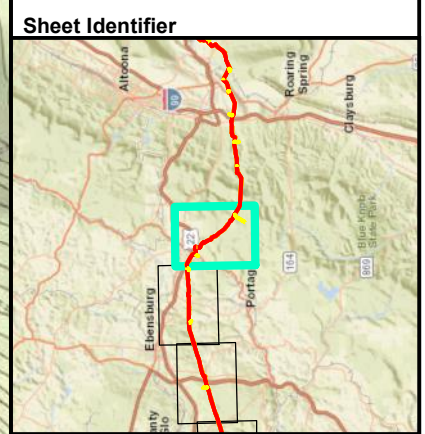
P:\GIS\SUNOCO\MARINER EAST 2\MDX\PPP_PC\SM\PIPELINE_PCSM_SOUTHWEST_USGS_RECEIVINGSTREAMS\MXD 111716.SP



End of Line
PADEP Southwest Region
Lat: 40° 24' 32.589" N
Lon: 78° 33' 24.982" W

Legend

- Stream
- Alignment Centerline
- Access Road
- Limit of Disturbance
- Block Valve/Station



**PROJECT LOCATION MAP
ATTACHMENT 1-19
PENNSYLVANIA PIPELINE PROJECT
NOVEMBER 12, 2016 ALIGNMENT
SUNOCO LOGISTICS, L.P.
CAMBRIA COUNTY,
PENNSYLVANIA**



Notes:
1) Topographic map provided by ESRI's ArcGIS Online USA Topo Maps map service (© 2013 National Geographic Society, i-cubed).
2) Quadrangle(s) displayed are Ebensburg.

FGH_P:\GIS\SUNOCO\MARINER_EAST_2MXD\PPP_PCS\MPIP\PIPELINE_PCSM_SOUTHWEST_USGS_RECEIVINGSTREAMS\MXD_111716.SP