

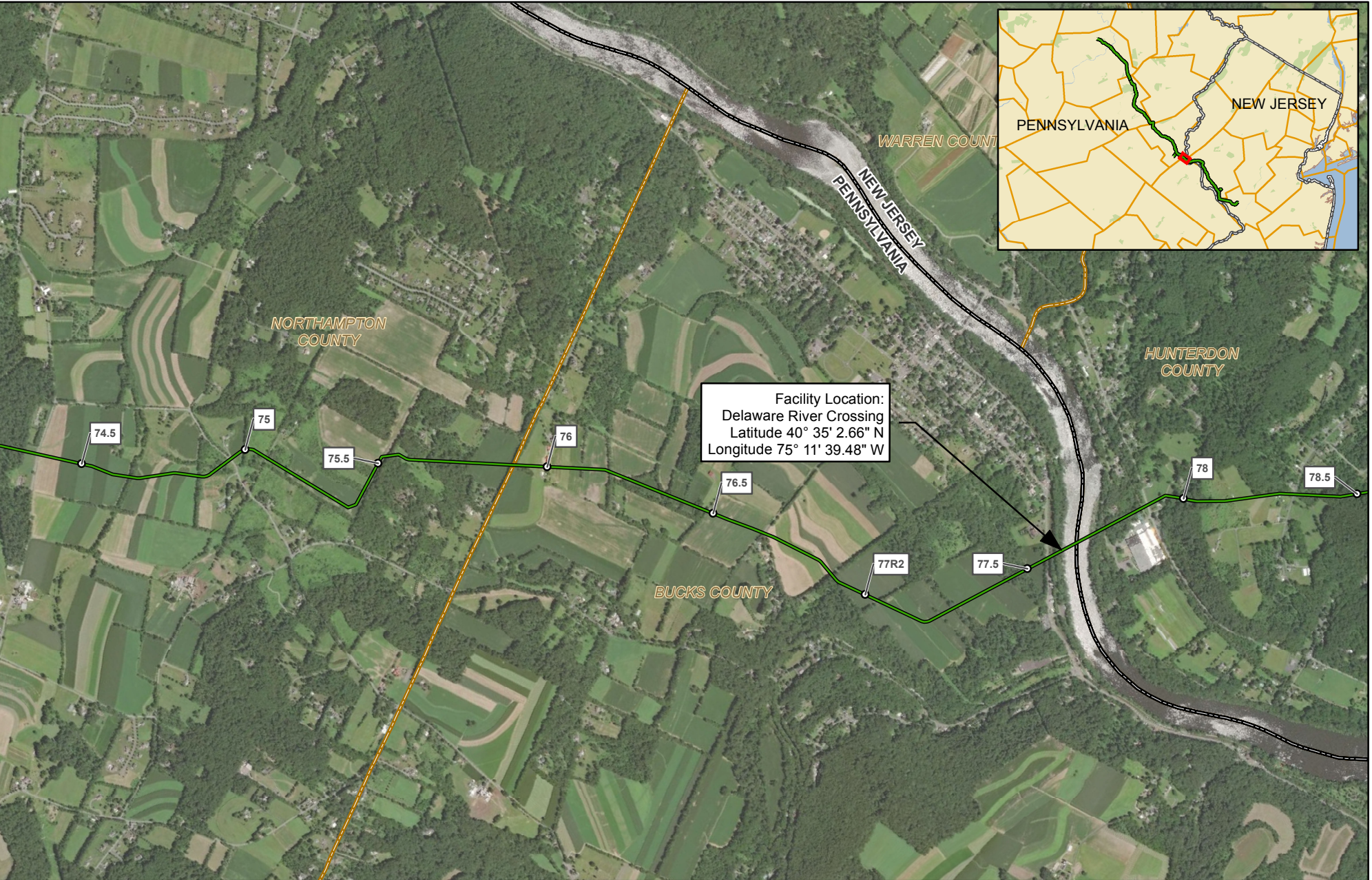
## SUBMERGED LAND LICENSE AGREEMENT SUBMITTALS

1. **JPA #** : E09-998
2. **Legal Name of Client**: - PennEast Pipeline Company LLC  
**State of Incorporation** - PA
3. **Principal place of business** – 1 Meridian Boulevard Suite 2C01 Wyomissing, PA 19610  
**Employer ID#** - 47-1573364
4. **Client's contact person & contact info.**– UGI Energy Services – Amber Holly – 610-373-7999 x 1172; aholly@ugies.com
5. **Consultant's name & contact info** – AECOM – Sarah Binckley – 610-832-2713; sarah.binckley@aecom.com
6. **This IS NOT in conjunction with a PennDOT Project.**
7. **County (Counties) and Municipality (ties) projects, encroachments or crossings are located in.**  
  
Durham Township, Bucks County
8. **Agreement type – Commercial**
9. **Locational Mapping of the Facilities** showing the **“FACILITIES AREA”** tagged on the map, with **Coordinates Example Lats & Longs: latitude 39° 53' 45.34" N, longitude -80° 13' 1.14" W”** **PLEASE ATTACH MAP WITH TEXT BOX TAGGED WITH INFORMATION AS STATE ABOVE- COLOR MAPS ARE ACCEPTABLE & PREFERRED, Monochromatic is accepted.** See attached USGS map.
10. **Project drawing** with dimensions L x W = total sq.ft =0.1 acres, (commercial) or linear ft (public service line)  
  
**SHOWING PROJECT AREA (outlined) WITH LENGTH & WIDTH = TOTAL SQ. FT FOR TOTAL TENTH OF ACRES OR TOTAL LINEAR FEET. ATTACH DRAWING WITH INSERT TEXT BOX TAGGED AS STATE ABOVE- COLOR DRAWINGS ARE ACCEPTABLE & PREFERRED, Monochromatic is accepted.** See attached Project drawing.
11. **Description** – To install and maintain a 36-inch diameter natural gas pipeline to transport natural gas from Luzerne County, Pennsylvania to Mercer County, New Jersey. The horizontal directional drill method will be used to cross under the Delaware River (Latitude 40.584071°N, Longitude -75.1942993°W), in Durham Township, Bucks County.
12. **Please send (EMAIL) SLLA-Submittal to [RA-105-SLLA@pa.gov](mailto:RA-105-SLLA@pa.gov) EP, 105-SLLA and [ymarx@pa.gov](mailto:ymarx@pa.gov) in the To... line, Include attachments of Map, Facilities drawing/plans with email, (this sheet can be an attachment or body of email) N/A.** Provided to the PADEP Southeast Regional Office as part of the PennEast Pipeline Project Joint Permit Application for Bucks County.

**Attachment 1**  
SLLA Location Map: Delaware River Crossing

---

G:\PennEast\353754\_PennEast\_Pipeline\_EPC\MapDataProd\FC\Work\GIS\MKD\PENNEAST\_USGS\_QUADRANT\_PADEP\_MAPBOOK\_85x11\2018\_12\_07\PENNEAST\_AERIAL\_IMAGERY\_PADEP\_MAPBOOK\_85x11.mxd



Facility Location:  
 Delaware River Crossing  
 Latitude 40° 35' 2.66" N  
 Longitude 75° 11' 39.48" W

- 1 MILE POST STATION EQUATIONS
- PROPOSED PENNEAST PIPELINE CENTERLINE
- COUNTY BOUNDARY
- STATE BOUNDARY

## PENNEAST PIPELINE PROJECT AERIAL IMAGERY MAP

NORTHAMPTON & BUCKS COUNTIES, PENNSYLVANIA  
 AND HUNTERDON COUNTY, NEW JERSEY

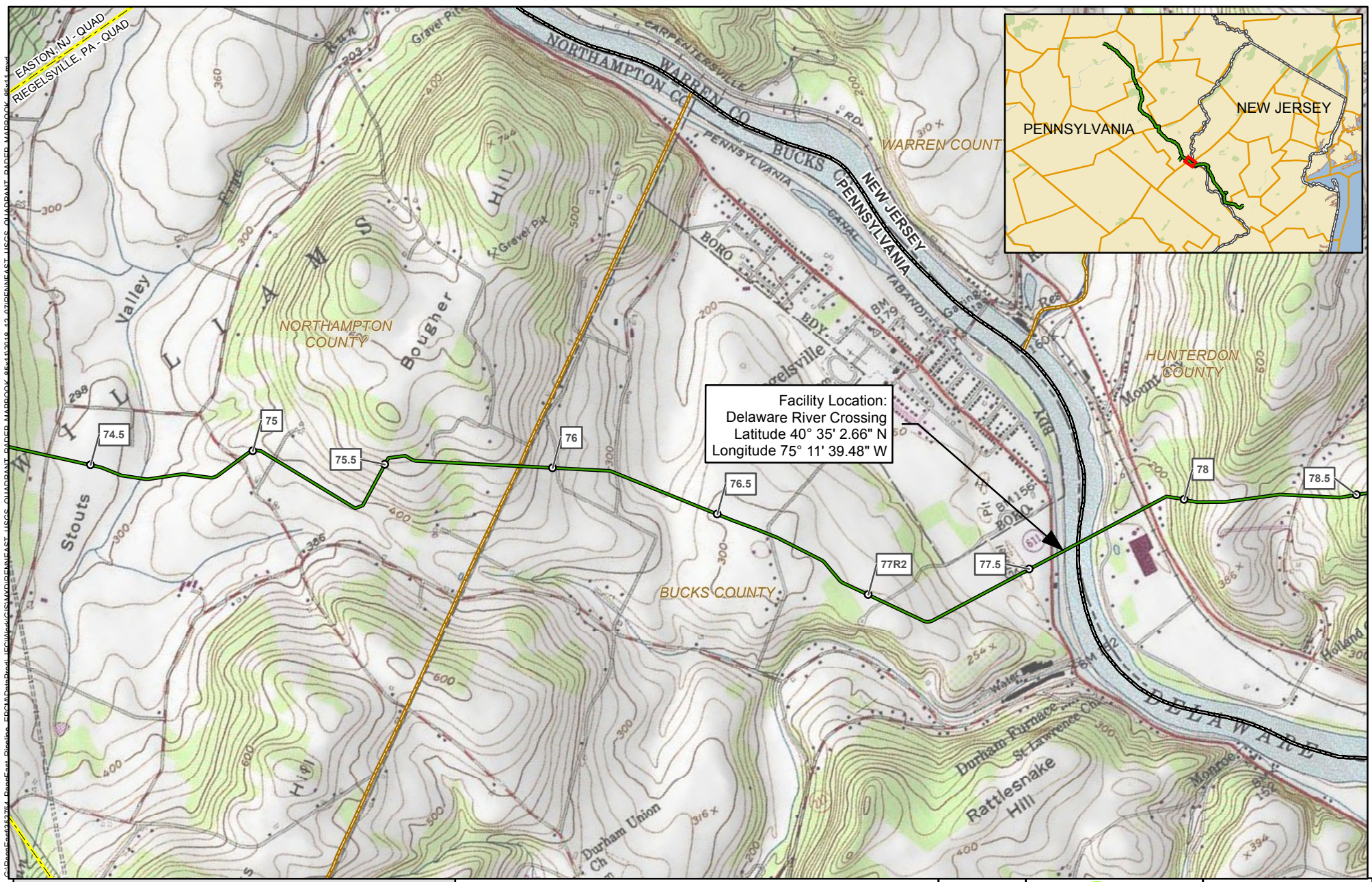


ABSOLUTE SCALE:  
 1:24,000  
 REFERENCE SCALE:  
 1 IN = 2,000 FT

**M**  
 MOTT  
 MACDONALD

DRAWN BY:	SNP 12/2018
CHECKED BY:	KEK 12/2018
APPROVED BY:	MJD 12/2018
REV. DATE:	12/2018
REVISION:	3
DESC:	PADEP FILING
PAGE:	1 OF 1

12072018-8511-CVE-000



Facility Location:  
 Delaware River Crossing  
 Latitude 40° 35' 2.66" N  
 Longitude 75° 11' 39.48" W

C:\Data\Envs\953264\_BoroEast\_Direction\_ECDCM\Data\Road\_LCS\Work\CS\KMDENNEAST\_LJCS\QUADRANT\_PAIDED\_MADBOOK\_8644.mxd  
 12/20/18 8:51:11 AM CVE-000

- 1 MILE POST STATION EQUATIONS
- PROPOSED PENNEAST PIPELINE CENTERLINE
- COUNTY BOUNDARY
- STATE BOUNDARY
- USGS QUADRANGLE BOUNDARY

## PENNEAST PIPELINE PROJECT

### USGS QUADRANGLE MAP

NORTHAMPTON & BUCKS COUNTIES, PENNSYLVANIA  
 AND HUNTERDON COUNTY, NEW JERSEY

2,000    1,000    0    2,000    4,000 FEET

ABSOLUTE SCALE:  
1:24,000

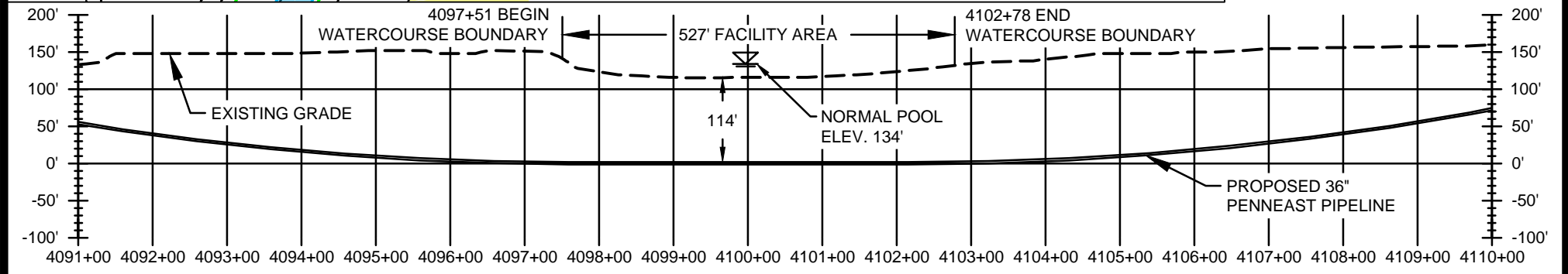
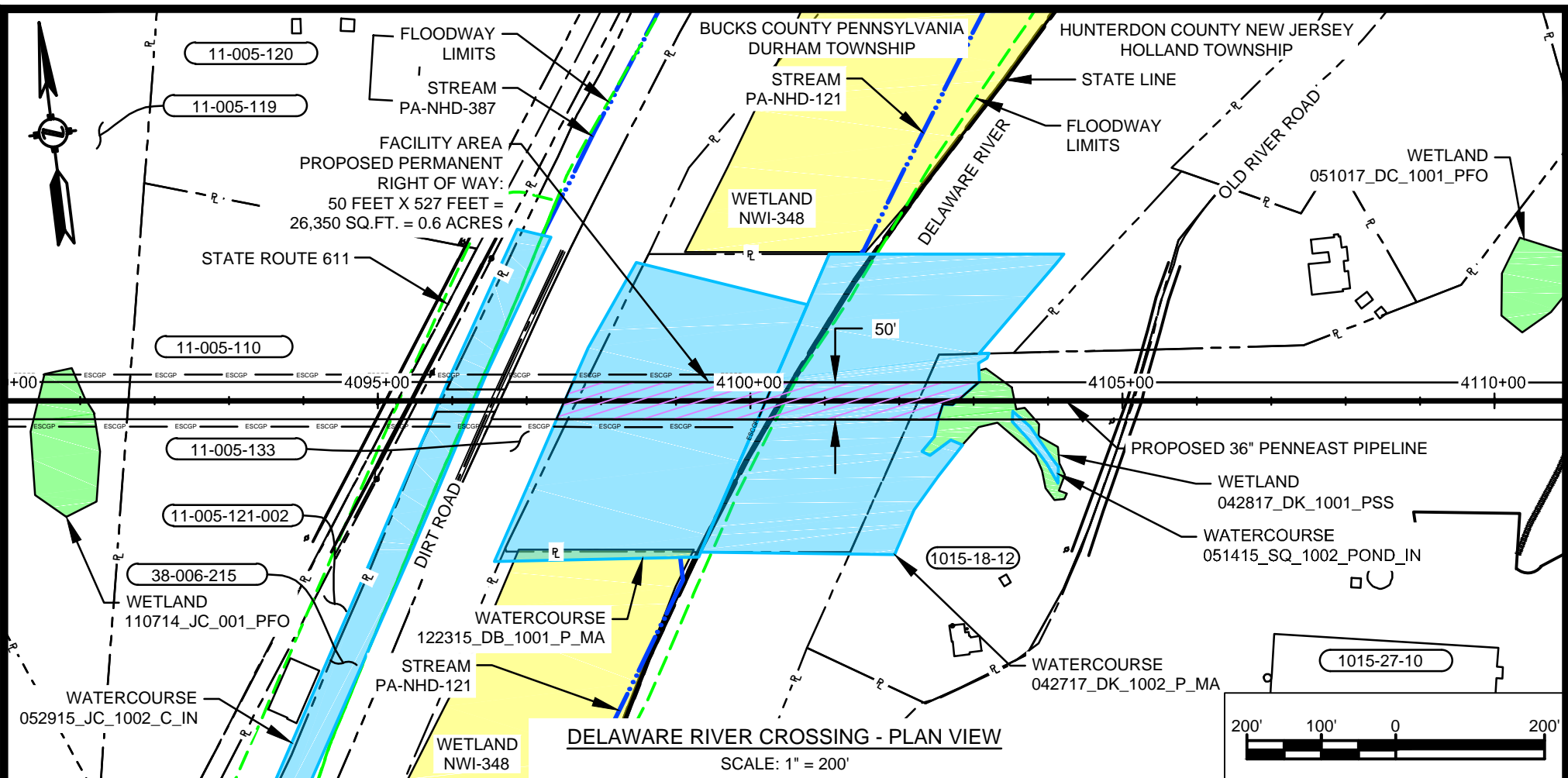
REFERENCE SCALE:  
1 IN = 2,000 FT

**M**  
MOTT  
MACDONALD

DRAWN BY:	SNP 12/2018
CHECKED BY:	KEK 12/2018
APPROVED BY:	MJD 12/2018
REV. DATE:	12/2018
REVISION:	3
DESC:	PADEP FILING
PAGE:	1 OF 1







REFERENCE DWG. NO.	REFERENCE TITLE	REV. NO.	REV. DESCRIPTION	DATE	PREPARED FOR	PENNEAST PIPELINE PROJECT		
000-03-01-156	ALIGNMENT SHEET	A	ISSUED FOR PADEP	12/2018		DRAWING NO.	DRAWING TITLE	REVISION
WSS-BU-ML-003	WETLAND & STREAM CROSSING PLAN					000-03-06-006.1	WATERBODY SITE SPECIFIC DETAIL	A