



Transcontinental Gas Pipe Line Company, LLC

Section 1-5 – Project Location Maps

Regional Energy Access Expansion Project

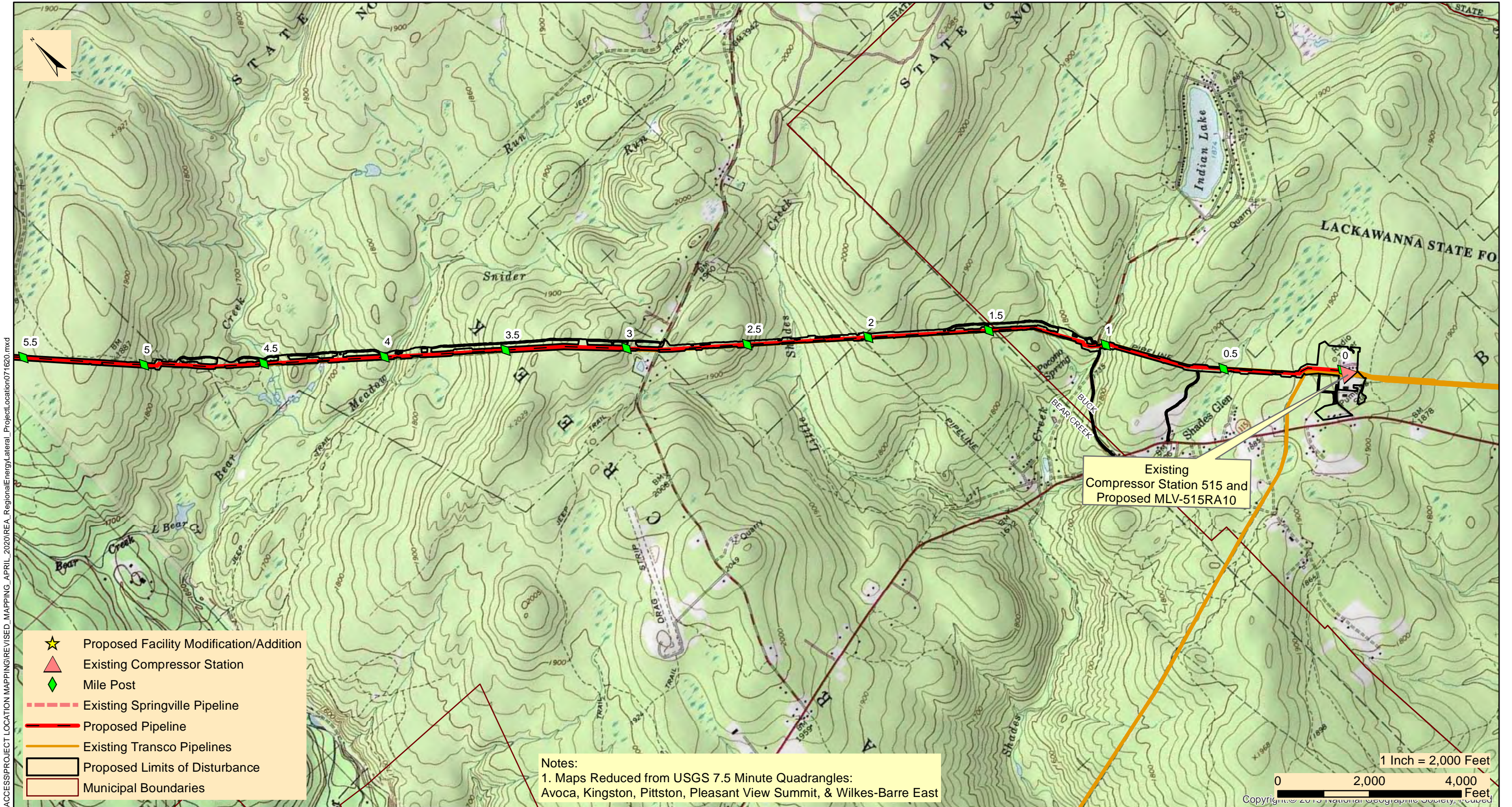
April 2021

TABLE OF CONTENTS

Section 1-5

- 1.5.1 Regional Energy Lateral
- 1.5.2 Effort Loop
- 1.5.3 Compressor Station 200
- 1.5.4 Compressor Station 515
- 1.5.5 Delaware River Regulator
- 1.5.6 Mainline A Regulator

SECTION 1.5.1
REGIONAL ENERGY LATERAL



M:\GIS\PROJECTS\REGIONAL_ENERGY_ACCESS\PROJECT_LOCATION_MAPPING\REVISED_MAPPING_APRIL_2020\REA_RegionalEnergy_Lateral_Project_Location071620.mxd

- ★ Proposed Facility Modification/Addition
- ▲ Existing Compressor Station
- ◆ Mile Post
- Existing Springville Pipeline
- Proposed Pipeline
- Existing Transco Pipelines
- ▭ Proposed Limits of Disturbance
- ▭ Municipal Boundaries

Notes:
 1. Maps Reduced from USGS 7.5 Minute Quadrangles:
 Avoca, Kingston, Pittston, Pleasant View Summit, & Wilkes-Barre East

1 Inch = 2,000 Feet
 0 2,000 4,000 Feet
 Copyright © 2019 National Geographic Society, Inc.



TRANSCONTINENTAL GAS PIPE LINE COMPANY, LLC
REGIONAL ENERGY ACCESS EXPANSION PROJECT
PROPOSED 30" REGIONAL ENERGY LATERAL

PROJECT LOCATION MAP

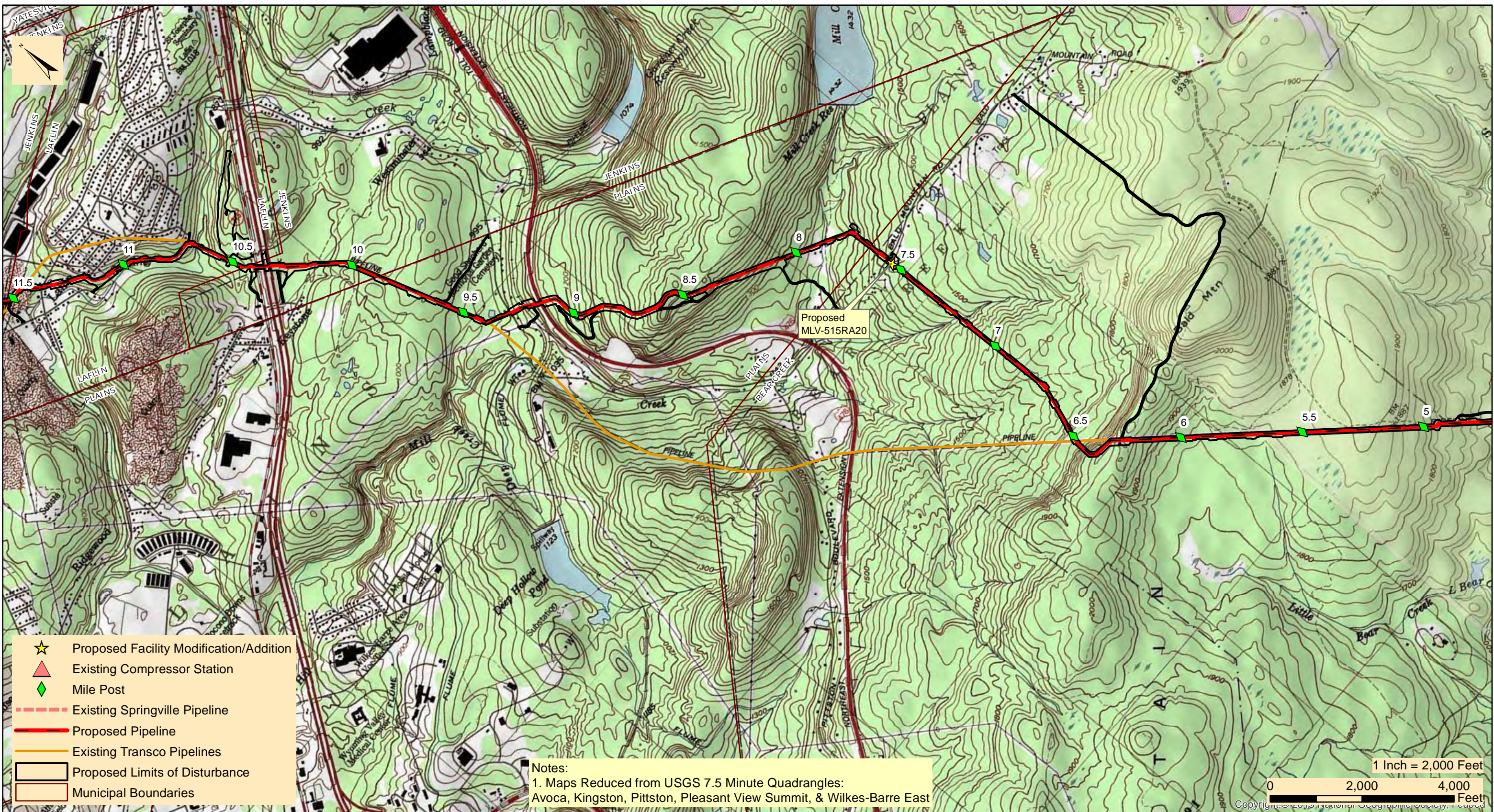
BUCK & BEAR CREEK TOWNSHIPS

LUZERNE COUNTY

PENNSYLVANIA

Date:	3/26/2021
Drawn By:	FTN
Figure Number:	REL-1

M:\GIS\PROJECTS\REGIONAL_ENERGY_ACCESS\PROJECT_LOCATION_MAPPING\REVISED_MAPPING_APRIL_2020\REA_RegionalEnergy\Lateral_ProjectLocation071620.mxd



- ★ Proposed Facility Modification/Addition
- ▲ Existing Compressor Station
- ◆ Mile Post
- Existing Springville Pipeline
- Proposed Pipeline
- Existing Transco Pipelines
- Proposed Limits of Disturbance
- Municipal Boundaries

Notes:
 1. Maps Reduced from USGS 7.5 Minute Quadrangles:
 Avoca, Kingston, Pittston, Pleasant View Summit, & Wilkes-Barre East

1 Inch = 2,000 Feet
 0 2,000 4,000 Feet
 Copyright © 2019 National Geographic Society. Reprinted



TRANSCONTINENTAL GAS PIPE LINE COMPANY, LLC
REGIONAL ENERGY ACCESS EXPANSION PROJECT
PROPOSED 30" REGIONAL ENERGY LATERAL

PROJECT LOCATION MAP

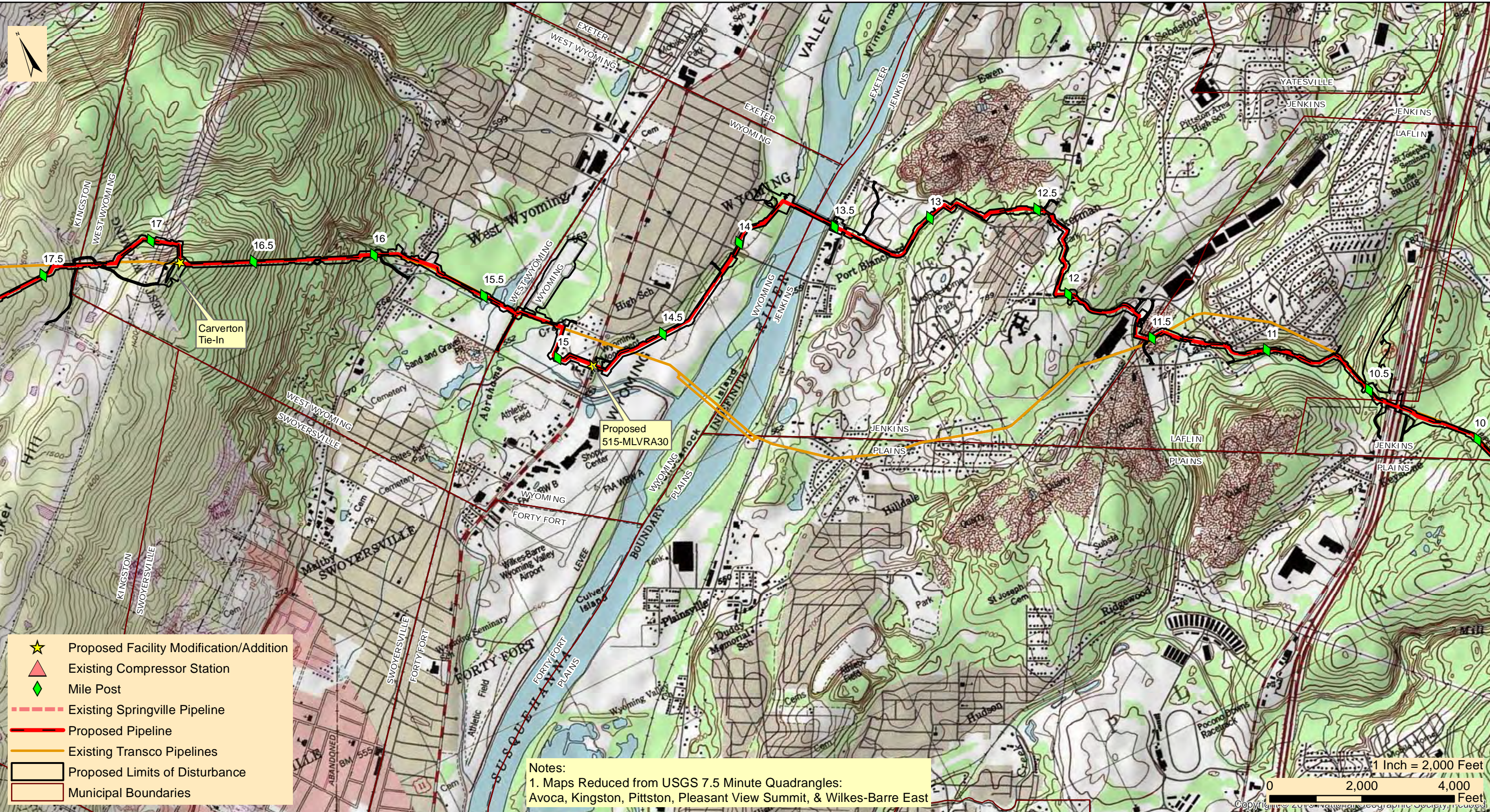
BEAR CREEK, JENKINS, PLAINS TWP'S, & LAFLIN BOROUGH

LUZERNE COUNTY

PENNSYLVANIA

Date:	3/26/2021
Drawn By:	FTN
Figure Number:	REL-2

M:\GIS\PROJECTS\REGIONAL_ENERGY_ACCESS\PROJECT_LOCATION_MAPPING\REVISED_MAPPING_APRIL_2020\REA_RegionalEnergy_Lateral_Project_Location071620.mxd



- ★ Proposed Facility Modification/Addition
- ▲ Existing Compressor Station
- ◆ Mile Post
- Existing Springville Pipeline
- Proposed Pipeline
- Existing Transco Pipelines
- ▭ Proposed Limits of Disturbance
- ▭ Municipal Boundaries

Notes:
 1. Maps Reduced from USGS 7.5 Minute Quadrangles:
 Avoca, Kingston, Pittston, Pleasant View Summit, & Wilkes-Barre East

1 Inch = 2,000 Feet
 0 2,000 4,000 Feet
 Copyright © 2019 National Geographic Society, Inc.



TRANSCONTINENTAL GAS PIPE LINE COMPANY, LLC
REGIONAL ENERGY ACCESS EXPANSION PROJECT
PROPOSED 30" REGIONAL ENERGY LATERAL
 PROJECT LOCATION MAP

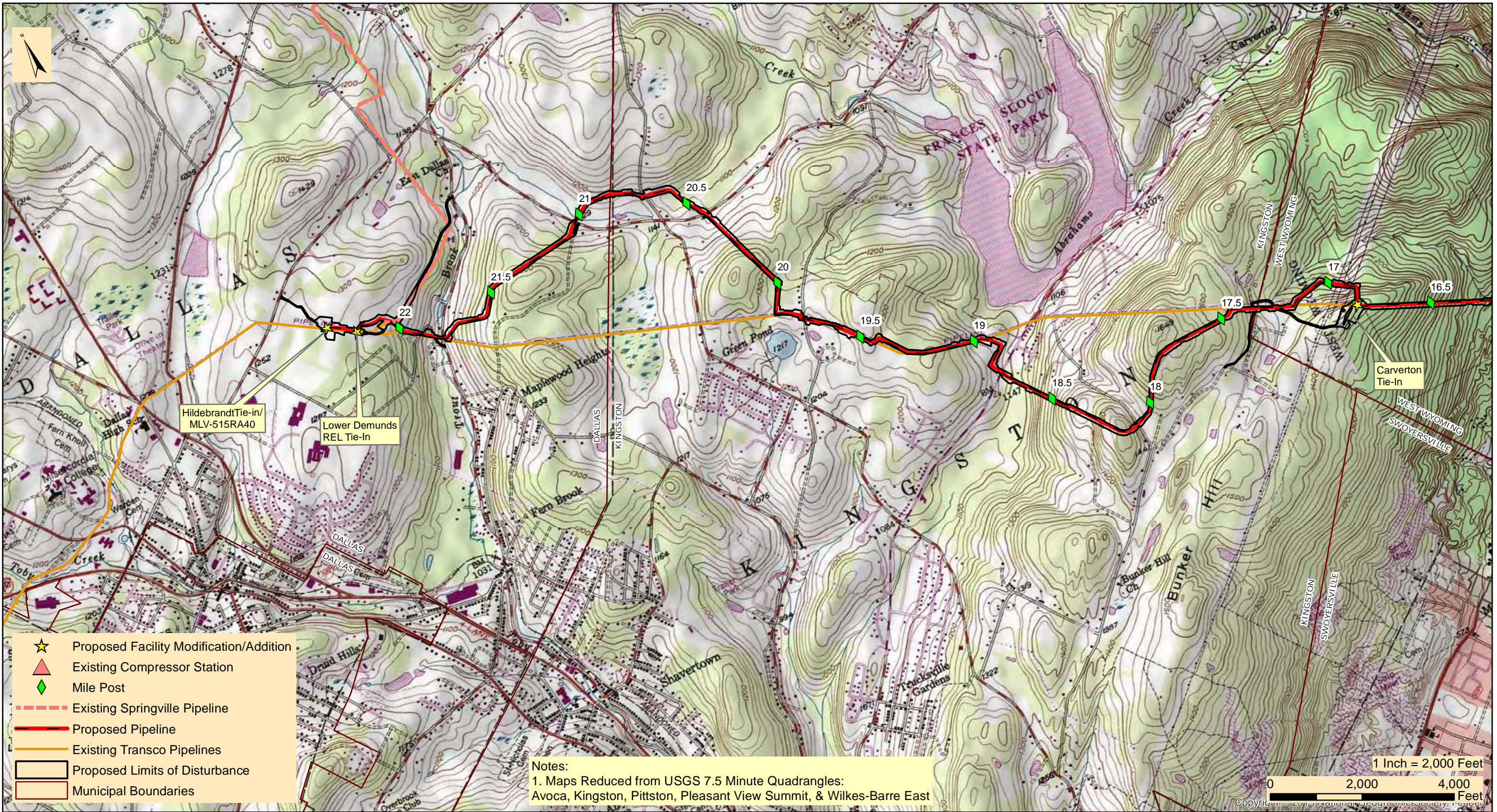
KINGSTON, JENKINS, WEST WYOMING, WYOMING, & LAFLIN

LUZERNE COUNTY

PENNSYLVANIA

Date:	3/26/2021
Drawn By:	FTN
Figure Number:	REL-3

M:\GIS\PROJECTS\REGIONAL_ENERGY_ACCESS\PROJECT_LOCATION_MAPPING\REVISED_MAPPING_APRIL_2020\REA_RegionalEnergy_Lateral_Project_Location071620.mxd



- ★ Proposed Facility Modification/Addition
- ▲ Existing Compressor Station
- ◆ Mile Post
- Existing Springville Pipeline
- Proposed Pipeline
- Existing Transco Pipelines
- Proposed Limits of Disturbance
- Municipal Boundaries

Notes:
 1. Maps Reduced from USGS 7.5 Minute Quadrangles:
 Avoca, Kingston, Pittston, Pleasant View Summit, & Wilkes-Barre East

1 Inch = 2,000 Feet
 0 2,000 4,000 Feet



TRANSCONTINENTAL GAS PIPE LINE COMPANY, LLC
REGIONAL ENERGY ACCESS EXPANSION PROJECT
PROPOSED 30" REGIONAL ENERGY LATERAL
 PROJECT LOCATION MAP

DALLAS, KINGSTON, & WEST WYOMING TOWNSHIP

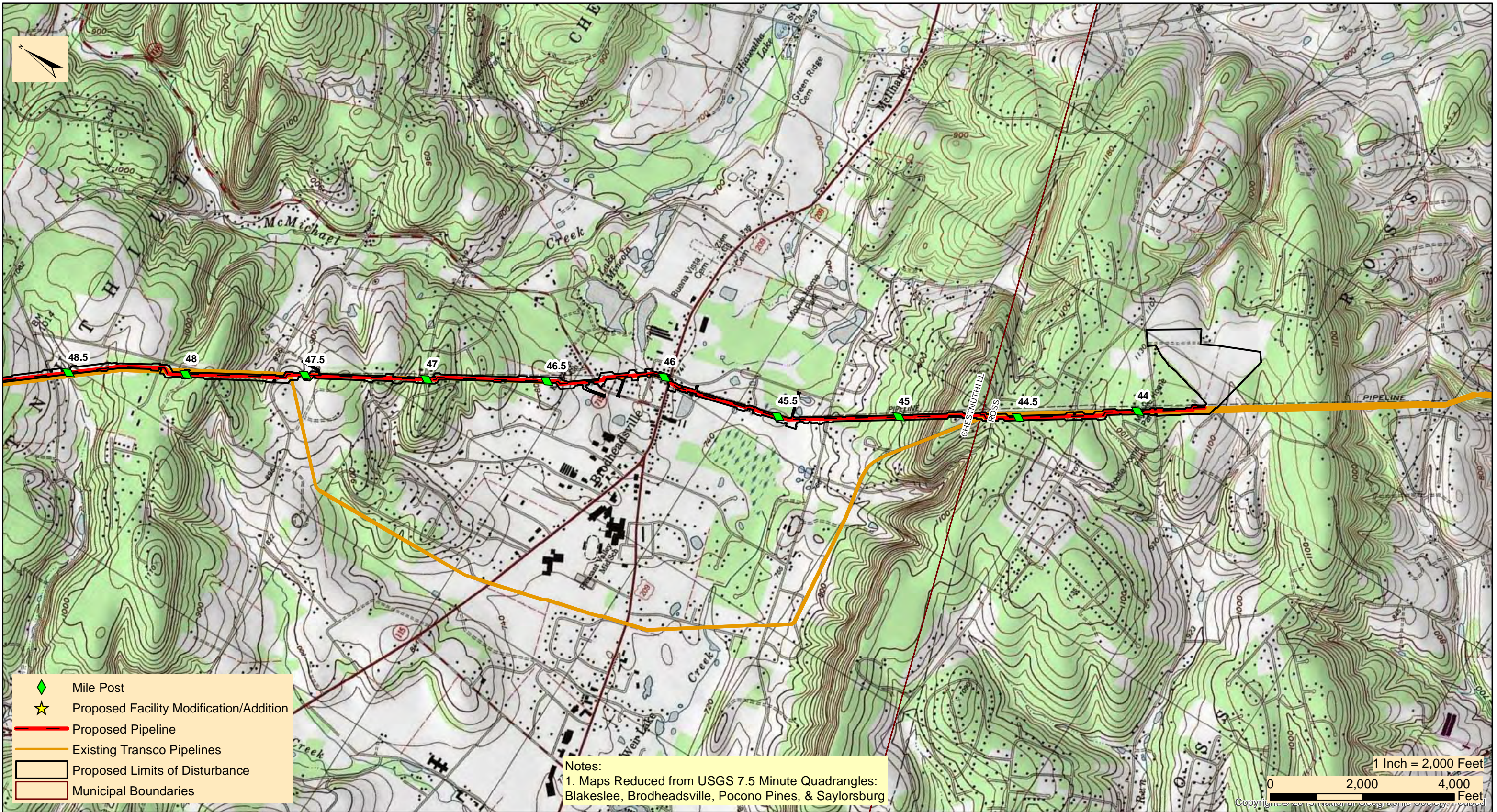
LUZERNE COUNTY

PENNSYLVANIA

Date:	3/26/2021
Drawn By:	FTN
Figure Number:	REL-4

SECTION 1.5.2
EFFORT LOOP

M:\GIS\PROJECTS\REGIONAL_ENERGY_ACCESS\PROJECT_LOCATION_MAPPING\REVISED_MAPPING_APRIL_2020\REA_EffortLoop_ProjectLocation_08262020.mxd



TRANSCONTINENTAL GAS PIPE LINE COMPANY, LLC
REGIONAL ENERGY ACCESS EXPANSION PROJECT
PROPOSED 42" EFFORT LOOP
PROJECT LOCATION MAP

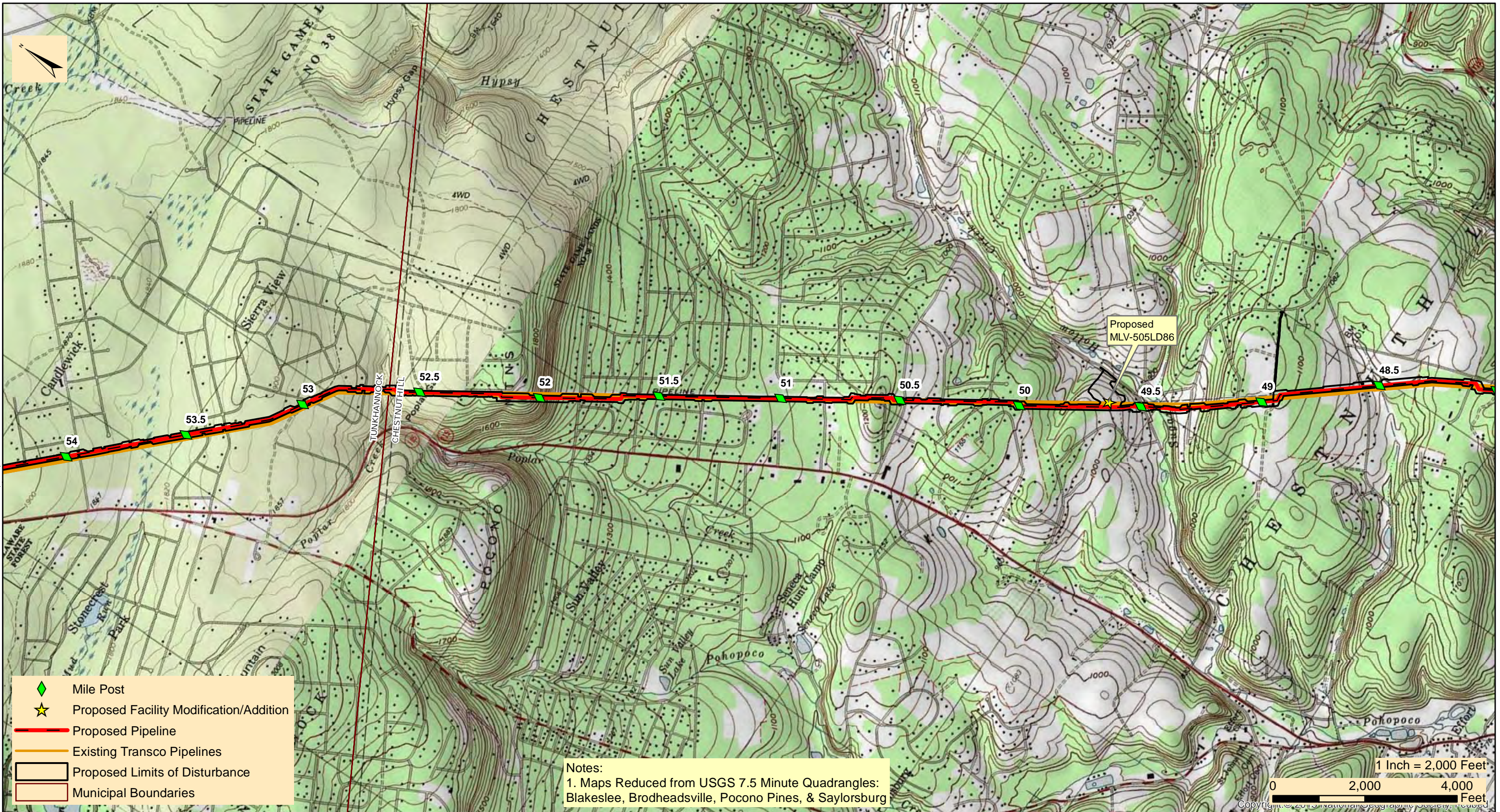
CHESTNUT HILL & ROSS TOWNSHIP

MONROE COUNTY

PENNSYLVANIA

Date:	3/26/2021
Drawn By:	FTN
Figure Number:	EL-1

M:\GIS\PROJECTS\REGIONAL_ENERGY_ACCESS\PROJECT_LOCATION_MAPPING\REVISED_MAPPING_APRIL_2020\AREA_EffortLoop_ProjectLocation_08262020.mxd



- ◆ Mile Post
- ★ Proposed Facility Modification/Addition
- Proposed Pipeline
- Existing Transco Pipelines
- Proposed Limits of Disturbance
- Municipal Boundaries

Notes:
 1. Maps Reduced from USGS 7.5 Minute Quadrangles:
 Blakeslee, Brodheads ville, Pocono Pines, & Saylor s burg

1 Inch = 2,000 Feet
 0 2,000 4,000 Feet
 Copyright © 2019 National Geographic Society, Reprinted



TRANSCONTINENTAL GAS PIPE LINE COMPANY, LLC
REGIONAL ENERGY ACCESS EXPANSION PROJECT
PROPOSED 42" EFFORT LOOP
 PROJECT LOCATION MAP

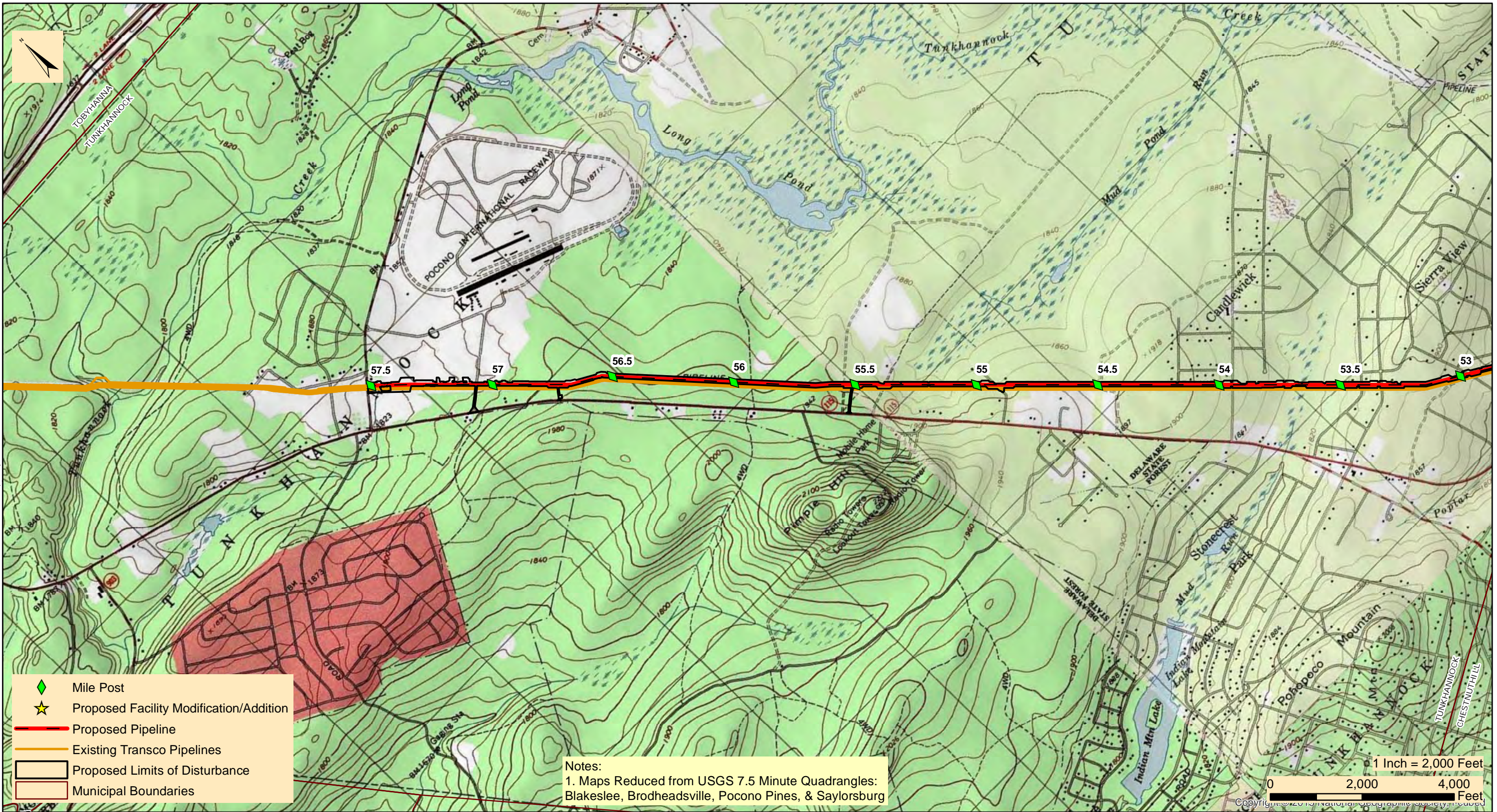
CHESTNUT HILL & TUNKHANNOCK TOWNSHIP

MONROE COUNTY

PENNSYLVANIA

Date:	3/26/2021
Drawn By:	FTN
Figure Number:	EL-2

M:\GIS\PROJECTS\REGIONAL_ENERGY_ACCESS\PROJECT_LOCATION_MAPPING\REVISED_MAPPING_APRIL_2020\REA_EffortLoop_ProjectLocation_08262020.mxd



TRANSCONTINENTAL GAS PIPE LINE COMPANY, LLC
REGIONAL ENERGY ACCESS EXPANSION PROJECT
PROPOSED 42" EFFORT LOOP
 PROJECT LOCATION MAP

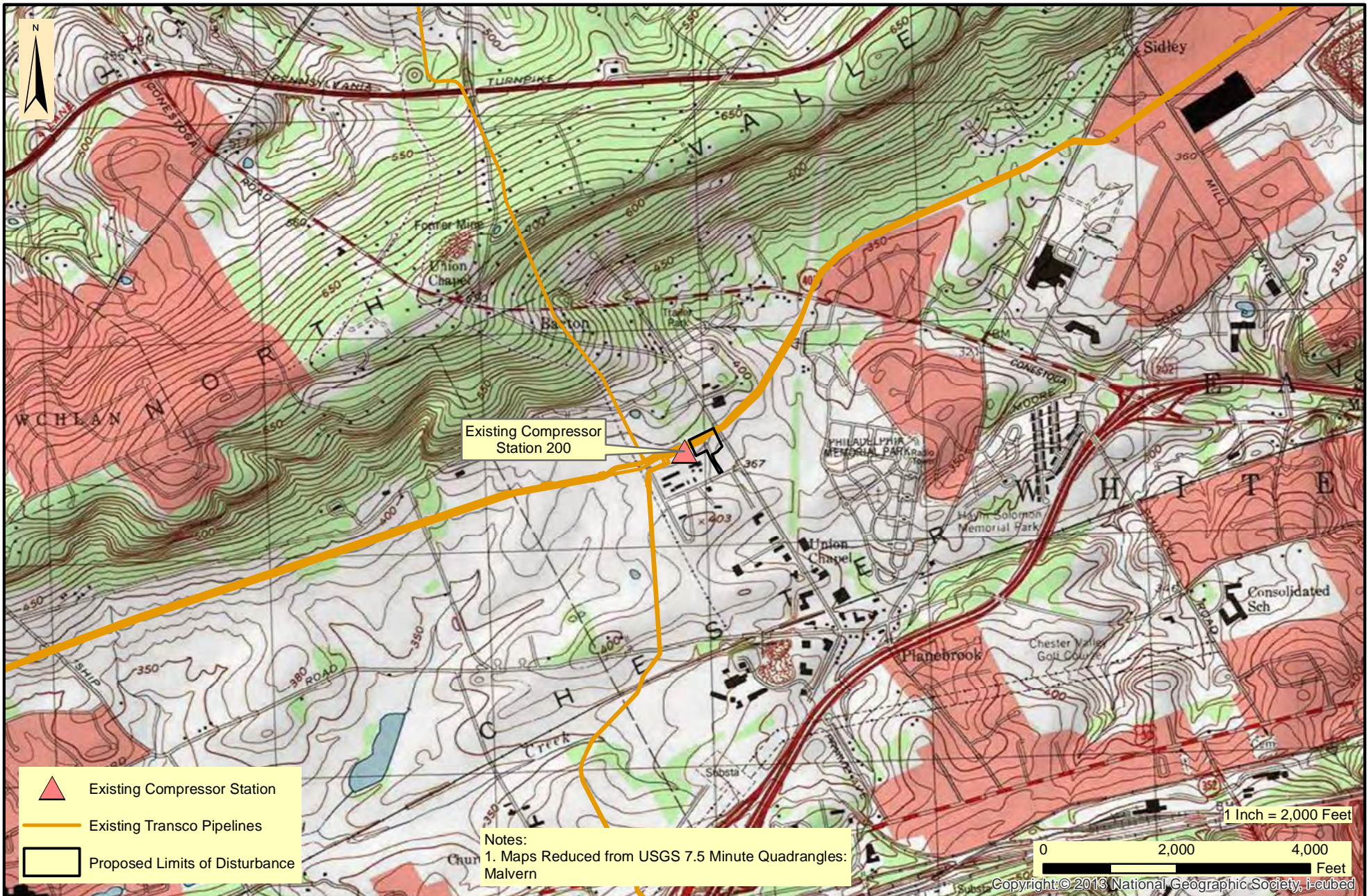
TUNKHANNOCK TOWNSHIP

MONROE COUNTY

PENNSYLVANIA

Date:	3/26/2021
Drawn By:	FTN
Figure Number:	EL-3

SECTION 1.5.3
COMPRESSOR STATION 200



TRANSCONTINENTAL GAS PIPE LINE COMPANY, LLC
REGIONAL ENERGY ACCESS EXPANSION PROJECT
EXISTING COMPRESSOR STATION 200
PROJECT LOCATION MAP

EAST WHITELAND TOWNSHIP

CHESTER COUNTY

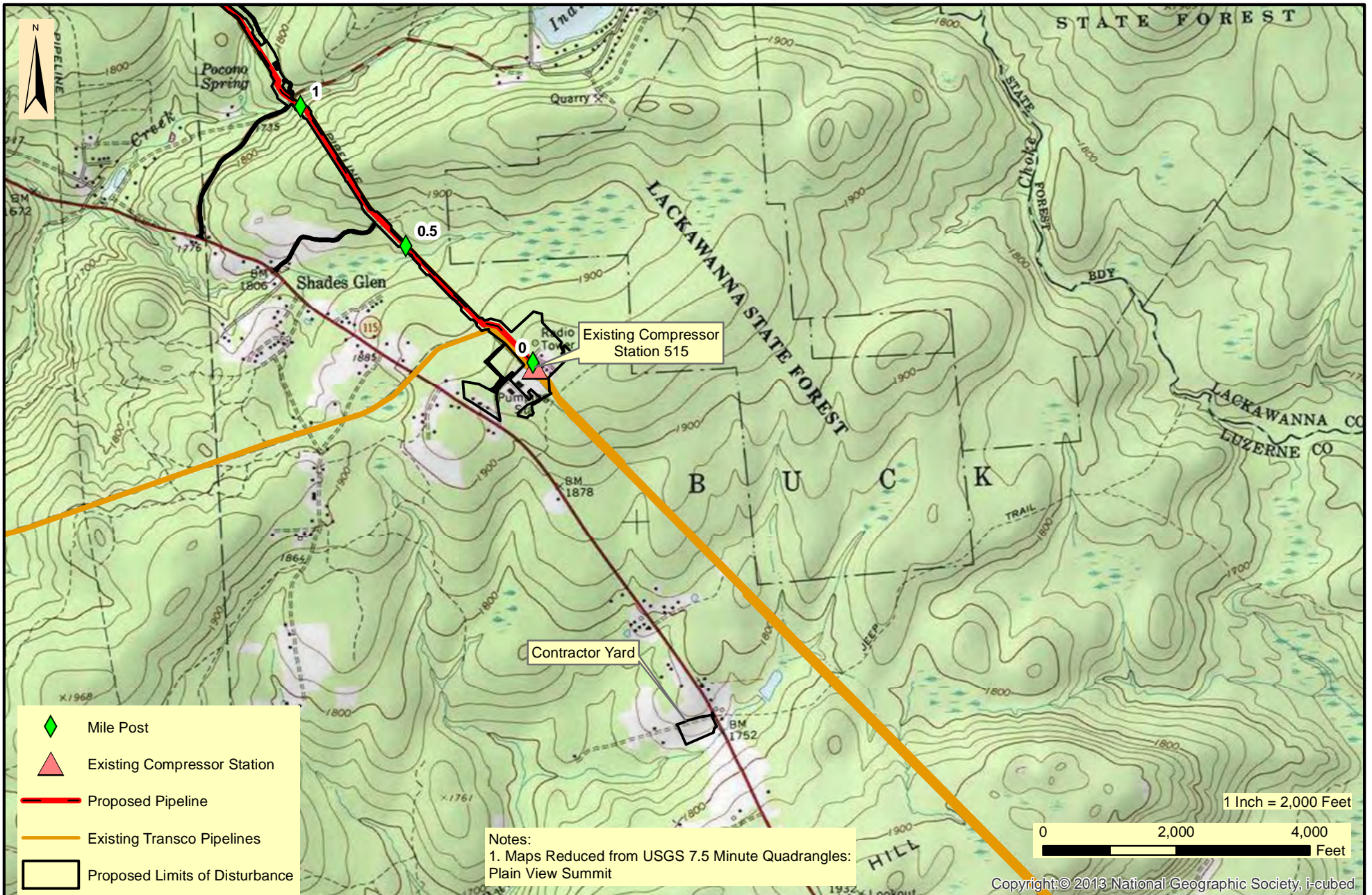
PENNSYLVANIA

Date:
3/26/2021

Drawn By:
FTN

Figure Number:
CS200-1

SECTION 1.5.4
COMPRESSOR STATION 515



TRANSCONTINENTAL GAS PIPE LINE COMPANY, LLC
REGIONAL ENERGY ACCESS EXPANSION PROJECT
EXISTING COMPRESSOR STATION 515

PROJECT LOCATION MAP

BUCK TOWNSHIP

LUZERNE COUNTY

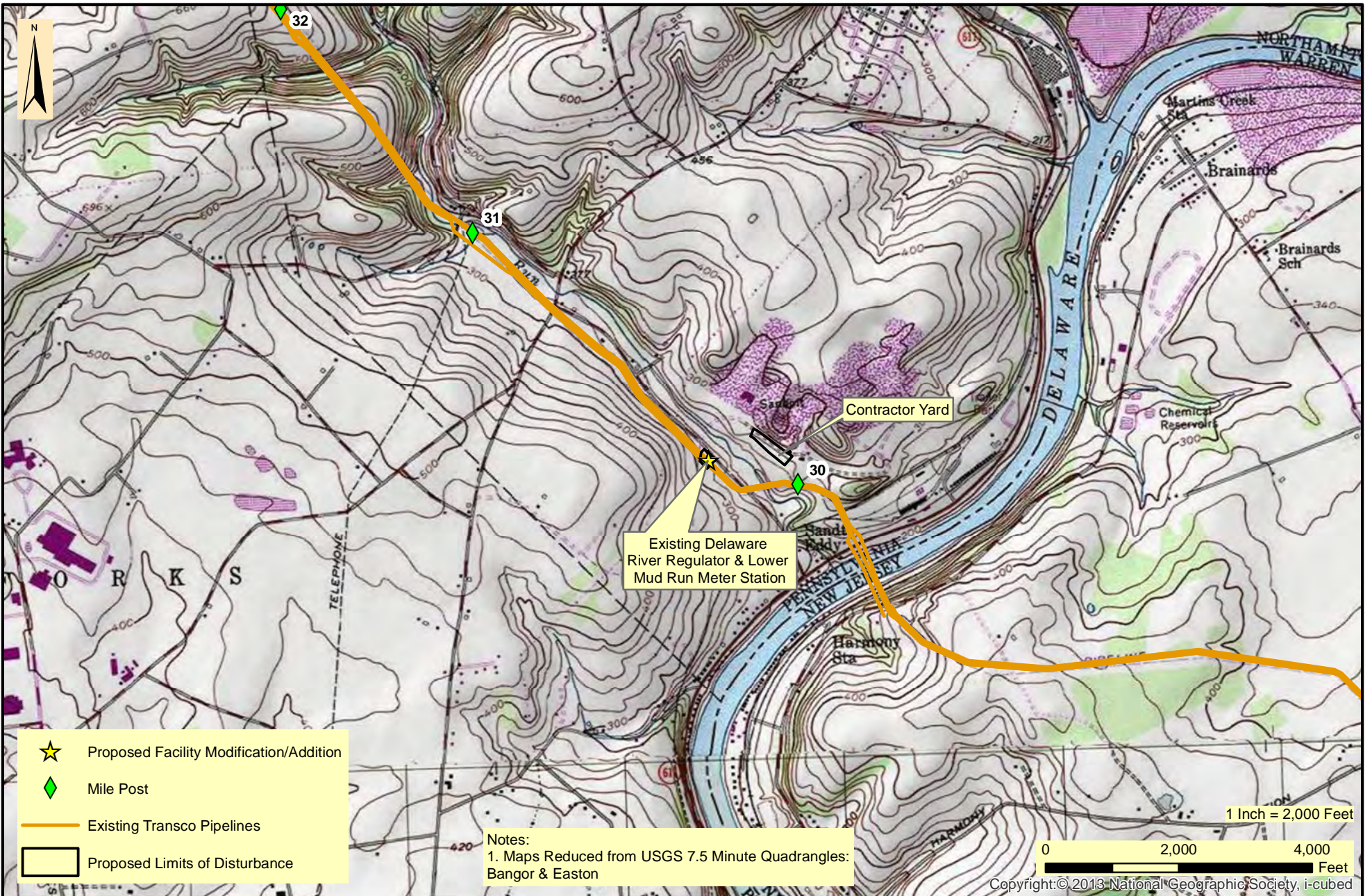
PENNSYLVANIA




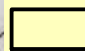
Date:
3/26/2021

Drawn By:
FTN

Figure Number:
CS515-1

SECTION 1.5.5
DELAWARE RIVER REGULATOR



-  Proposed Facility Modification/Addition
-  Mile Post
-  Existing Transco Pipelines
-  Proposed Limits of Disturbance

Notes:
 1. Maps Reduced from USGS 7.5 Minute Quadrangles:
 Bangor & Easton

1 Inch = 2,000 Feet
 0 2,000 4,000 Feet
 Copyright: © 2013 National Geographic Society, i-cubed



TRANSCONTINENTAL GAS PIPE LINE COMPANY, LLC
 REGIONAL ENERGY ACCESS EXPANSION PROJECT
 EXISTING DELAWARE RIVER REGULATOR AND LOWER MUD RUN METER STATION
 PROJECT LOCATION MAP

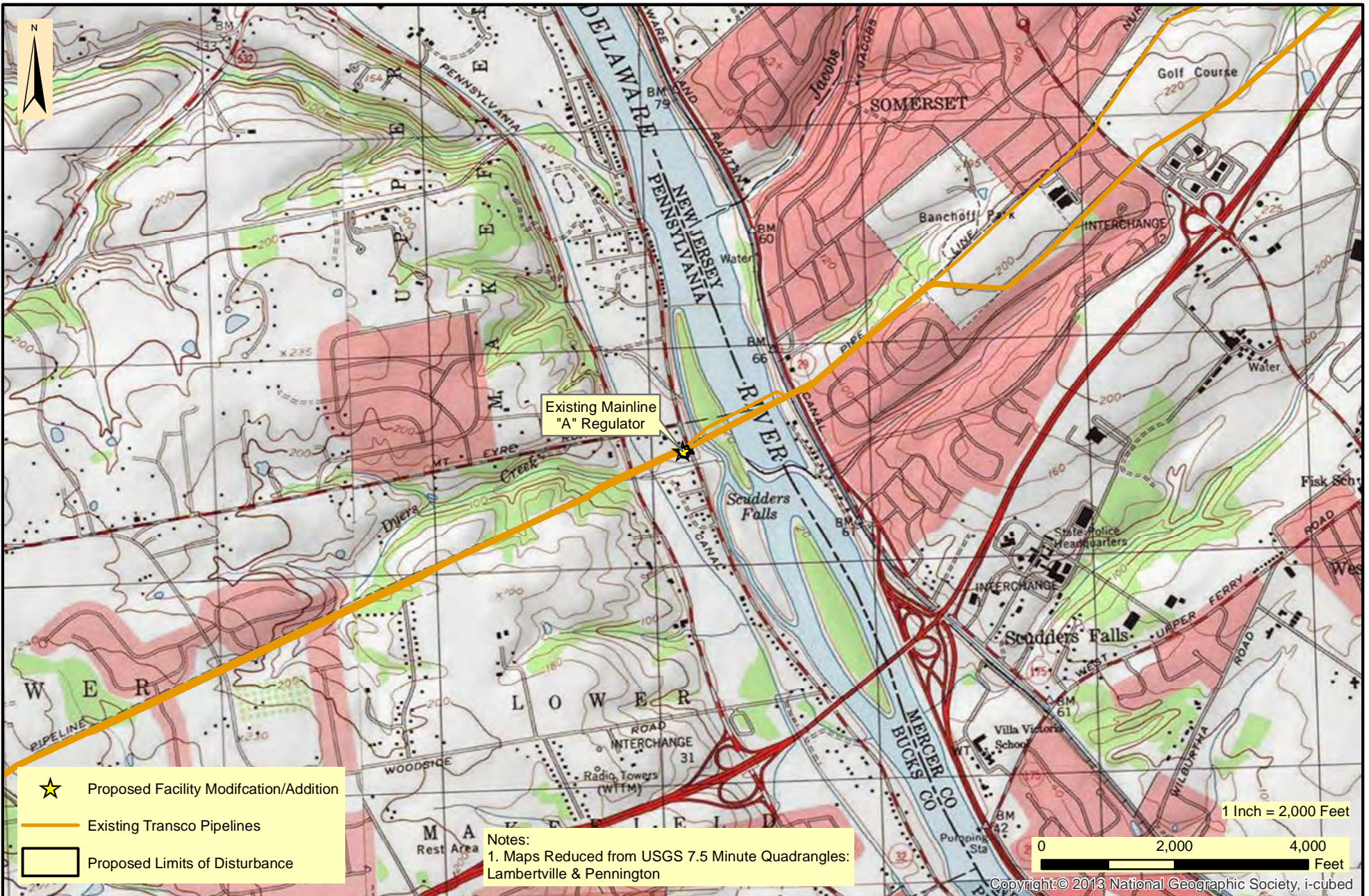
Date:
 3/26/2021
 Drawn By:
 FTN
 Figure Number:
 DEL/LMR-1

LOWER MT BETHEL TOWNSHIP



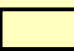
NORTHAMPTON COUNTY

PENNSYLVANIA

SECTION 1.5.6
MAINLINE A REGULATOR



Existing Mainline "A" Regulator

-  Proposed Facility Modification/Addition
-  Existing Transco Pipelines
-  Proposed Limits of Disturbance

Notes:
 1. Maps Reduced from USGS 7.5 Minute Quadrangles:
 Lambertville & Pennington

1 Inch = 2,000 Feet
 0 2,000 4,000 Feet

Copyright © 2013 National Geographic Society, i-cubed



TRANSCONTINENTAL GAS PIPE LINE COMPANY, LLC
REGIONAL ENERGY ACCESS EXPANSION PROJECT
EXISTING MAINLINE "A" REGULATOR
 PROJECT LOCATION MAP

LOWER MAKEFIELD TOWNSHIP

BUCKS COUNTY

PENNSYLVANIA

Date:	3/26/2021
Drawn By:	FTN
Figure Number:	MLA-1