

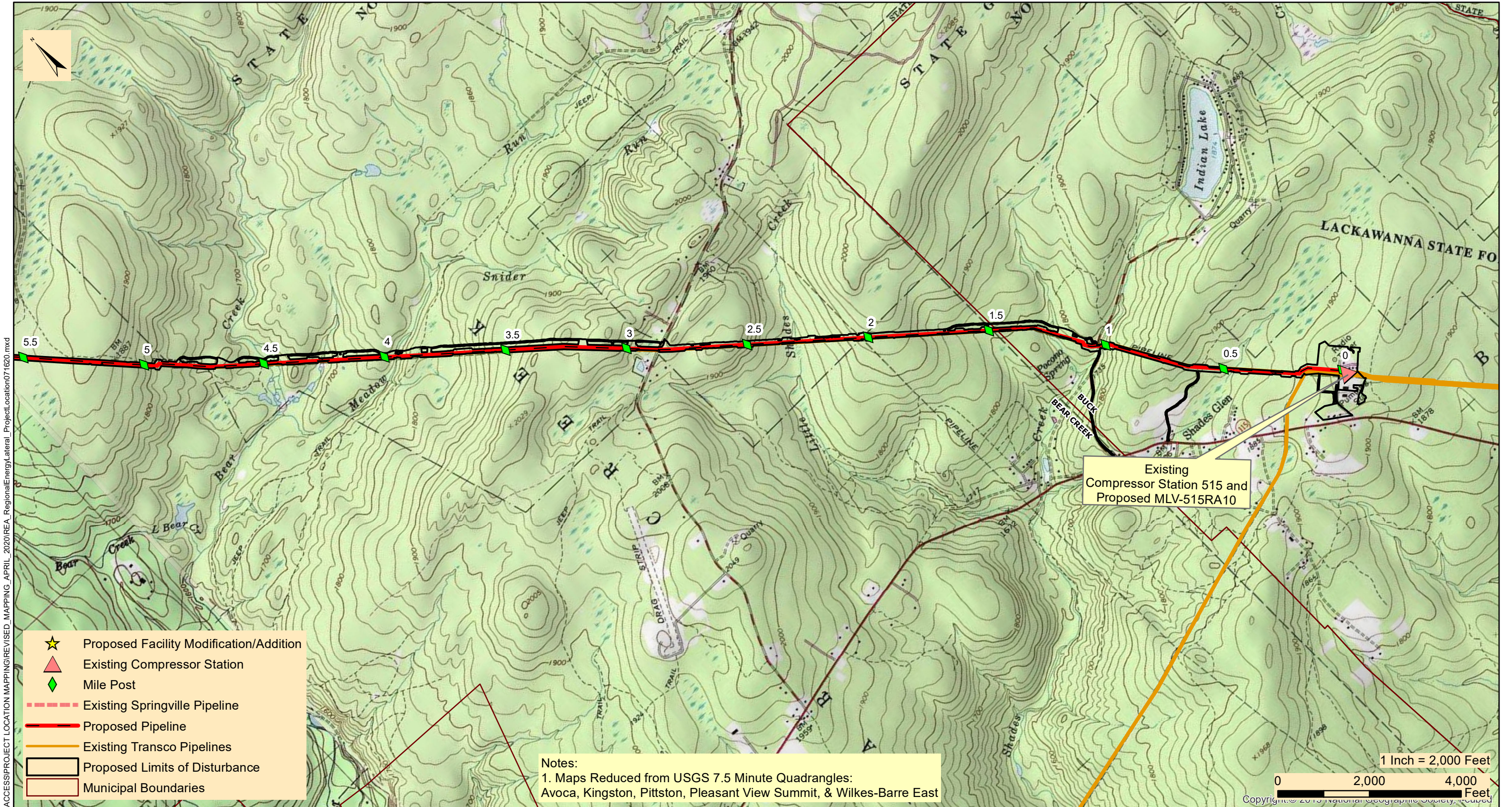


**Transcontinental Gas Pipe Line Company, LLC**

**Requirement I – Project Location Map**

**Regional Energy Access Expansion Project –  
Regional Energy Lateral and Existing Compressor Station 515**

**April 2021**



M:\GIS\PROJECTS\REGIONAL\_ENERGY\_ACCESS\PROJECT\_LOCATION\_MAPPING\REVISED\_MAPPING\_APRIL\_2020\REA\_RegionalEnergy\Lateral\_Project\_Location071620.mxd

- ★ Proposed Facility Modification/Addition
- ▲ Existing Compressor Station
- ◆ Mile Post
- Existing Springville Pipeline
- Proposed Pipeline
- Existing Transco Pipelines
- ▭ Proposed Limits of Disturbance
- ▭ Municipal Boundaries

Notes:  
 1. Maps Reduced from USGS 7.5 Minute Quadrangles:  
 Avoca, Kingston, Pittston, Pleasant View Summit, & Wilkes-Barre East

Existing  
 Compressor Station 515 and  
 Proposed MLV-515RA10

1 Inch = 2,000 Feet  
 0 2,000 4,000 Feet  
 Copyright © 2019 National Geographic Society, Inc.



**TRANSCONTINENTAL GAS PIPE LINE COMPANY, LLC**  
**REGIONAL ENERGY ACCESS EXPANSION PROJECT**  
**PROPOSED 30" REGIONAL ENERGY LATERAL**  
**PROJECT LOCATION MAP**

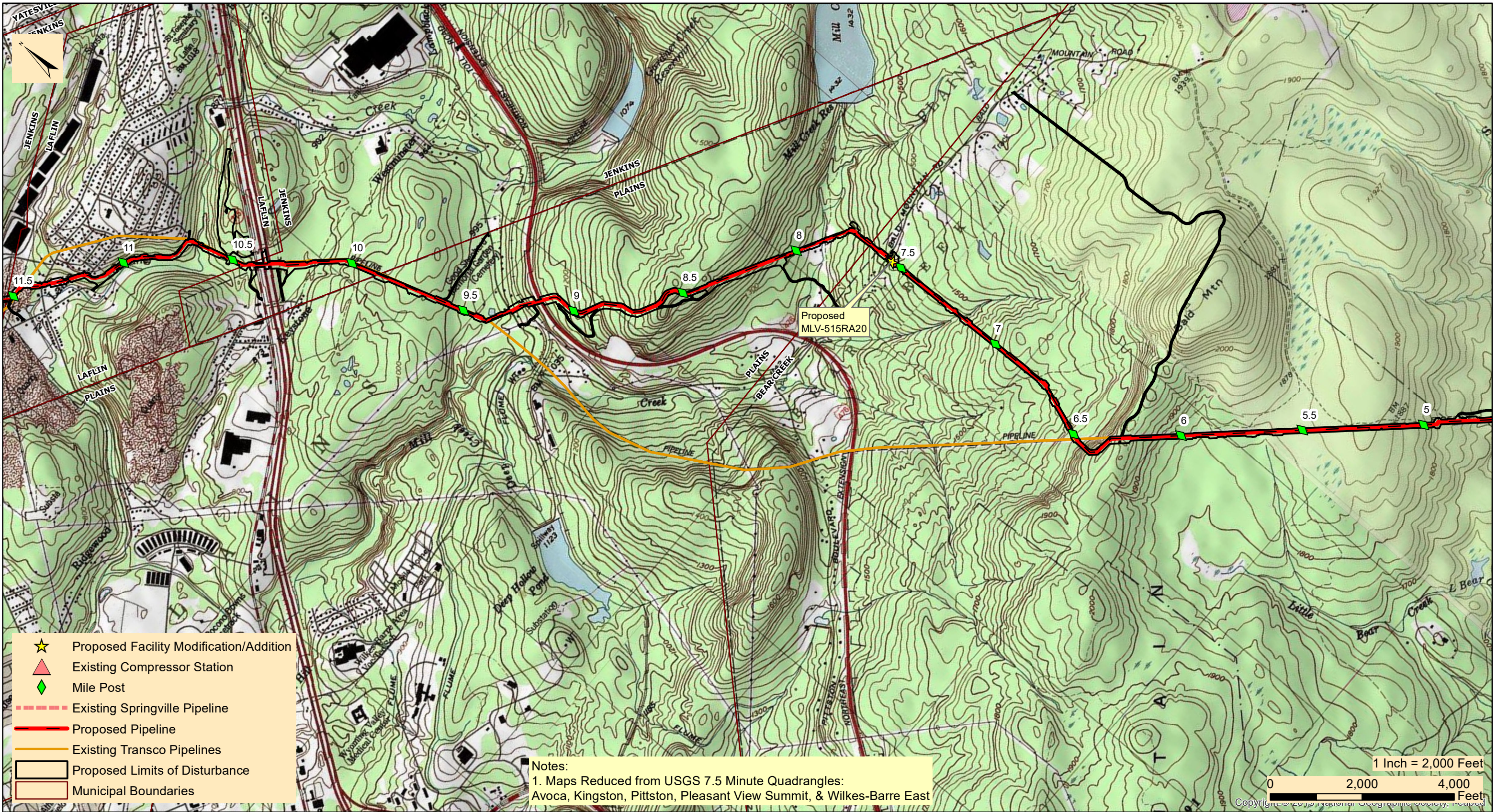
BUCK & BEAR CREEK TOWNSHIPS

LUZERNE COUNTY

PENNSYLVANIA

Date: 3/26/2021
Drawn By: FTN
Figure Number: REL-1

M:\GIS\PROJECTS\REGIONAL\_ENERGY\_ACCESS\PROJECT\_LOCATION\_MAPPING\REVISED\_MAPPING\_APRIL\_2020\REA\_RegionalEnergy\Lateral\_Project\_Location071620.mxd



- ★ Proposed Facility Modification/Addition
- ▲ Existing Compressor Station
- ◆ Mile Post
- Existing Springville Pipeline
- Proposed Pipeline
- Existing Transco Pipelines
- Proposed Limits of Disturbance
- Municipal Boundaries

Notes:  
 1. Maps Reduced from USGS 7.5 Minute Quadrangles:  
 Avoca, Kingston, Pittston, Pleasant View Summit, & Wilkes-Barre East

1 Inch = 2,000 Feet  
 0 2,000 4,000 Feet  
 Copyright © 2019 National Geographic Society. Reprinted



**TRANSCONTINENTAL GAS PIPE LINE COMPANY, LLC**  
**REGIONAL ENERGY ACCESS EXPANSION PROJECT**  
**PROPOSED 30" REGIONAL ENERGY LATERAL**  
**PROJECT LOCATION MAP**

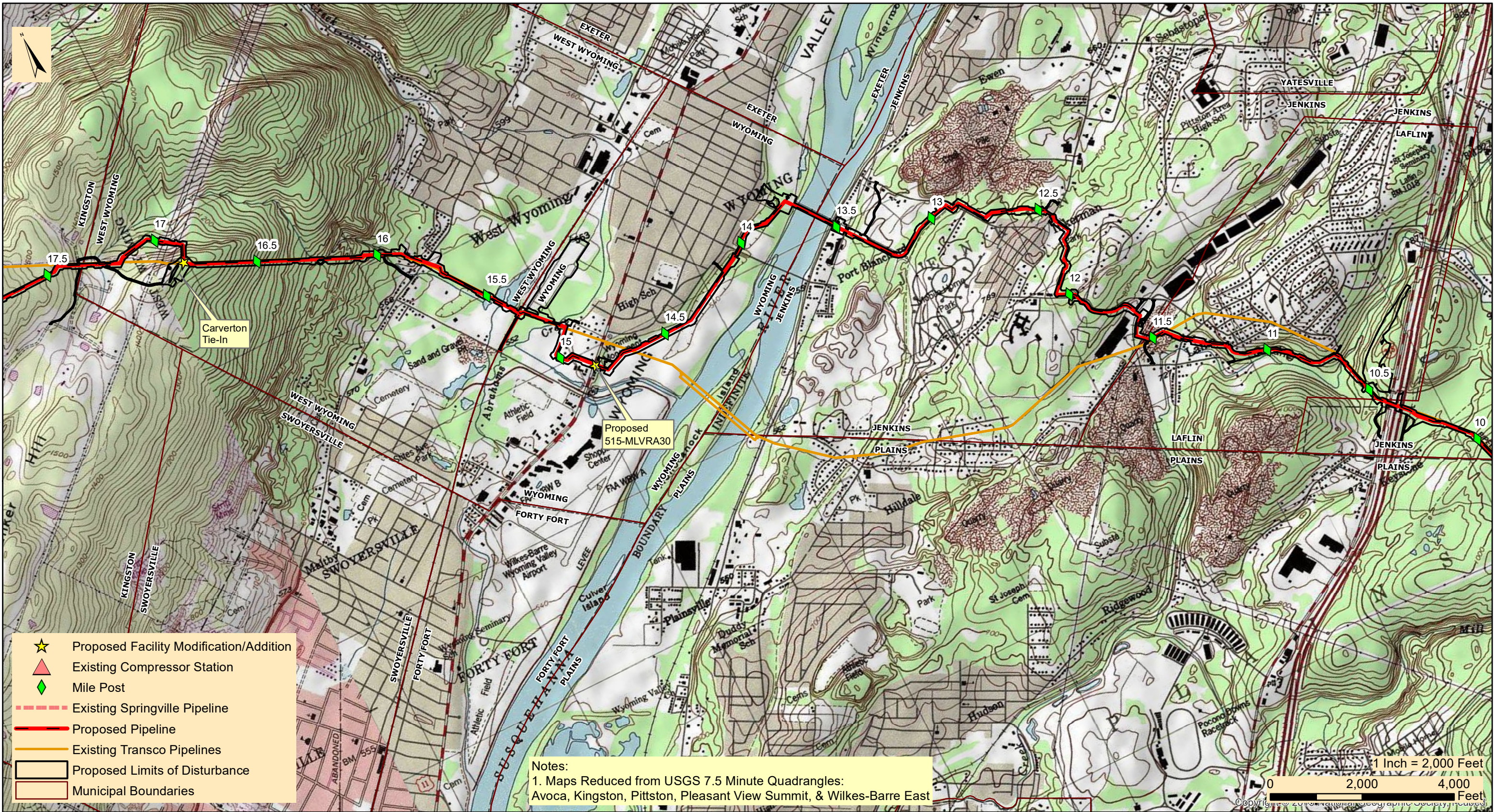
BEAR CREEK, JENKINS, PLAINS TWP, & LAFLIN BOROUGH

LUZERNE COUNTY

PENNSYLVANIA

Date:	3/26/2021
Drawn By:	FTN
Figure Number:	REL-2

M:\GIS\PROJECTS\REGIONAL\_ENERGY\_ACCESS\PROJECT\_LOCATION\_MAPPING\REVISED\_MAPPING\_APRIL\_2020\REA\_RegionalEnergy\_Lateral\_Project\_Location071620.mxd



**TRANSCONTINENTAL GAS PIPE LINE COMPANY, LLC**  
**REGIONAL ENERGY ACCESS EXPANSION PROJECT**  
**PROPOSED 30" REGIONAL ENERGY LATERAL**  
**PROJECT LOCATION MAP**

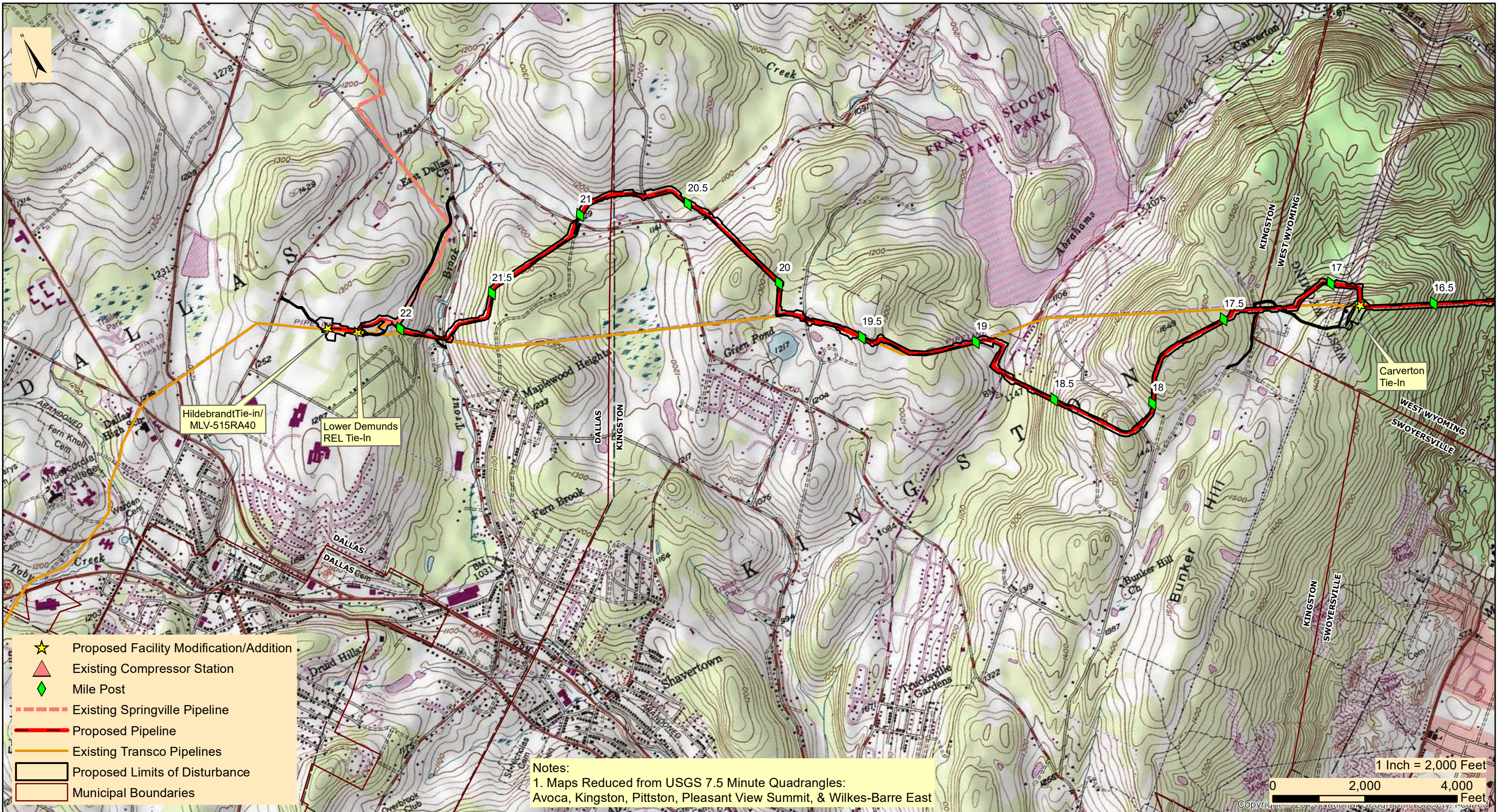
KINGSTON, JENKINS, WEST WYOMING, WYOMING, & LAFLIN

LUZERNE COUNTY

PENNSYLVANIA

Date:	3/26/2021
Drawn By:	FTN
Figure Number:	REL-3

M:\GIS\PROJECTS\REGIONAL\_ENERGY\_ACCESS\PROJECT\_LOCATION\_MAPPING\REVISED\_MAPPING\_APRIL\_2020\REA\_RegionalEnergyLateral\_ProjectLocation071620.mxd



- ★ Proposed Facility Modification/Addition
- ▲ Existing Compressor Station
- ◆ Mile Post
- - - Existing Springville Pipeline
- Proposed Pipeline
- Existing Transco Pipelines
- Proposed Limits of Disturbance
- Municipal Boundaries

Notes:  
 1. Maps Reduced from USGS 7.5 Minute Quadrangles:  
 Avoca, Kingston, Pittston, Pleasant View Summit, & Wilkes-Barre East



**TRANSCONTINENTAL GAS PIPE LINE COMPANY, LLC**  
**REGIONAL ENERGY ACCESS EXPANSION PROJECT**  
**PROPOSED 30" REGIONAL ENERGY LATERAL**  
**PROJECT LOCATION MAP**

DALLAS, KINGSTON, & WEST WYOMING TOWNSHIP

LUZERNE COUNTY

PENNSYLVANIA

Date:	3/26/2021
Drawn By:	FTN
Figure Number:	REL-4