

## **ATTACHMENT 6**

### **SITE PLANS**



# National Fuel<sup>®</sup>

## Supply Corporation

### INDEX

COVER  
LEGEND  
NOTES

COVER  
LEGEND  
GENERAL NOTES

POTTER COUNTY

FIGURE 1	WETLAND W01z, STREAM S73z
FIGURE 2	WETLAND W01, STREAM S01, S02
FIGURE 2A	PIPELINE CROSSING PROFILE - STREAM S02
FIGURE 3	WETLAND W02, STREAM S03
FIGURE 3.1	WETLAND W02, STREAM S04
FIGURE 3.2	WETLAND W02, STREAM S05
FIGURE 3A	PIPELINE CROSSING PROFILE - STREAM S03
FIGURE 3B	PIPELINE CROSSING PROFILE - STREAM S04, S05
FIGURE 4	WETLAND W03
FIGURE 5	WETLAND W04, STREAM S06, S07
FIGURE 5.1	WETLAND W04, STREAM S08
FIGURE 5A	PIPELINE CROSSING PROFILE - STREAM S08
FIGURE 6	WETLAND W05, STREAM S09, S10
FIGURE 6A	PIPELINE CROSSING PROFILE - STREAM S09, S10
FIGURE 7	WETLAND W06, STREAM S11
FIGURE 7.1	WETLAND W06, STREAM S12, S13
FIGURE 7A	PIPELINE CROSSING PROFILE - STREAM S11
FIGURE 7B	PIPELINE CROSSING PROFILE - STREAM S12, S13
FIGURE 8	WETLAND 07, STREAM S14
FIGURE 8A	PIPELINE CROSSING PROFILE - STREAM S14
FIGURE 9	STREAM S15
FIGURE 9A	PIPELINE CROSSING PROFILE - STREAM S15
FIGURE 10	WETLAND W08, STREAM S16
FIGURE 10A	PIPELINE CROSSING PROFILE - STREAM S16
FIGURE 11	STREAM S17
FIGURE 11A	PIPELINE CROSSING PROFILE - STREAM S17
FIGURE 12	STREAM S18a
FIGURE 12A	PIPELINE CROSSING PROFILE - STREAM S18a
FIGURE 13	WETLAND W10
FIGURE 14	WETLAND W02, STREAM S03 (Z20 TAR 1)
FIGURE E-1	WETLAND W45, W46, STREAM S55 (ELLISBURG CS)
FIGURE E-2	WETLAND W47 (ELLISBURG CS)



**TETRA TECH**

WWW.TETRATECH.COM

301 ELLICOTT STREET  
BUFFALO, NY 14203  
T: (716) 849-9419 | F: (716) 849-9420

NATIONAL FUEL GAS SUPPLY CORPORATION  
TIOGA PATHWAY PROJECT

SITE SPECIFICS  
COVER SHEET

DATE:	11/01/2024
PROJECT NO.:	212C-BF-00493
DESIGNED BY:	BC
DRAWN BY:	BC / JZ
CHECKED BY:	RD
SHEET:	1 OF 3

COPYRIGHT TETRA TECH INC.

**COVER**



# National Fuel<sup>®</sup>

## Supply Corporation

### LEGEND

	EXISTING MAJOR CONTOUR		LIMIT OF DISTURBANCE
	EXISTING MINOR CONTOUR		ENVIRONMENTAL SURVEY LIMIT
	EXISTING TREE LINE		EXISTING PERMANENT EASEMENT
	EXISTING FENCELINE		PROPOSED PIPELINE
	EXISTING ROAD CENTERLINE		12" COMPOST FILTER SOCK
	EXISTING ROAD EDGE		18" COMPOST FILTER SOCK
	EXISTING PIPELINE		24" COMPOST FILTER SOCK
	EXISTING BUILDING		PERMANENT WATER BAR W/ END TREATMENT
	PROPERTY LINE		TEMPORARY WATER BAR W/ END TREATMENT
	TOWNSHIP BOUNDARY		AASHTO #1 ROCK CONSTRUCTION ENTRANCE
	100-YEAR FLOODWAY		TIMBER MAT CROSSING / TEMPORARY EQUIPMENT BRIDGE
	100-YEAR FEMA FLOODPLAIN		EROSION CONTROL BLANKET
	EXISTING STREAM WITH FLOW DIRECTION		AGGREGATE STOCKPILE
	EXISTING DITCH		TRENCH PLUG
	SOIL BOUNDARY		SOIL STOCKPILE
	SOIL TYPE		EXISTING ACCESS ROAD / PROPOSED ACCESS ROAD
	EXISTING WETLAND (PEM)		
	EXISTING WETLAND (PFO)		
	EXISTING WETLAND (PSS)		
	EXISTING POND		



**TETRA TECH**

WWW.TETRATECH.COM

301 ELLICOTT STREET  
BUFFALO, NY 14203  
T: (716) 849-9419 | F: (716) 849-9420

NATIONAL FUEL GAS SUPPLY CORPORATION  
TIOGA PATHWAY PROJECT

### SITE SPECIFICS LEGEND

DATE:	11/01/2024
PROJECT NO.:	212C-BF-00493
DESIGNED BY:	BC
DRAWN BY:	BC / JZ
CHECKED BY:	RD
SHEET:	2 OF 3

COPYRIGHT TETRA TECH INC.

### LEGEND



# National Fuel<sup>®</sup>

## Supply Corporation

### GENERAL NOTES

1. INFORMATION PROVIDED WITHIN THE SITE SPECIFICS PREPARED BY TETRA TECH, INC. INCLUDES QUANTITIES OF IMPACTS TO AQUATIC RESOURCES AS A RESULT OF PROPOSED CONSTRUCTION, AND DESIGN OF EROSION AND SEDIMENTATION CONTROL (E&S) BEST MANAGEMENT PRACTICES (BMPS) FOR THE PURPOSE OF PREVENTING AND/OR MINIMIZING EROSION AND SEDIMENTATION DURING CONSTRUCTION. THE SITE SPECIFICS HAVE BEEN PREPARED FOR AGENCY PERMITTING AND THE DESIGN OF E&S BMPS ONLY, AND HAVE BEEN PREPARED IN RELIANCE ON SOURCE DATA AS PROVIDED AND DESCRIBED IN GENERAL NOTE 2. TOPOGRAPHY, CONTOURS, AND ALL IDENTIFICATION, CHARACTERIZATION, AND/OR LOCATION OF SITE FEATURES (E.G. STRUCTURES, ROADWAYS, ETC.) ARE ASSUMED TO BE ACCURATE; HOWEVER, TETRA TECH, INC. HAS PERFORMED NO FIELD VERIFICATION.

2. SOURCE DATA

DATA USED FOR DEVELOPMENT OF THIS PLAN INCLUDES, BUT MAY NOT BE LIMITED TO THE FOLLOWING SOURCES:

- LINE Z20 PIPELINE: EXISTING CONTOURS AND SITE FEATURES BASED ON LIGHT DETECTION AND RANGING (LIDAR) TOPOGRAPHY AND AERIAL IMAGERY OBTAINED FROM THE PENNSYLVANIA SPATIAL DATA ACCESS (PASDA) GEOSPATIAL DATA PORTAL; JUNE 2024.
- LINE YM59 PIPELINE: EXISTING CONTOURS AND SITE FEATURES BASED ON LIDAR TOPOGRAPHY AND AERIAL IMAGERY OBTAINED FROM AN AERIAL FIELD SURVEY PERFORMED BY OTHERS AND PROVIDED TO TETRA TECH, INC. BY NATIONAL FUEL GAS SUPPLY CORPORATION.
- ALL PARCEL BOUNDARIES, LANDOWNER INFORMATION, EXISTING AND PROPOSED PIPELINE LOCATIONS, RIGHT-OF-WAY AND EASEMENT LINES, AND WORK SPACES PROVIDED TO TETRA TECH, INC. BY NATIONAL FUEL GAS SUPPLY CORPORATION. INFORMATION DEPICTED ON THE PLAN DRAWINGS REPRESENTS THE BEST AVAILABLE INFORMATION PROVIDED. NATIONAL FUEL GAS SUPPLY CORPORATION IS RESPONSIBLE FOR ACCURACY OF THE INFORMATION PROVIDED AND DEPICTED ON THE PLAN DRAWINGS.
- ALL PROPOSED PIPELINE STATIONING PROVIDED TO TETRA TECH, INC. BY NATIONAL FUEL GAS SUPPLY CORPORATION. NOTE: PIPELINE STATIONS DEPICTED ON THESE DRAWINGS REPRESENT 3D STATIONS AND ARE NOT INTENDED TO REPRESENT A CONSISTENT 2D HORIZONTAL SCALE.
- SOIL TYPES AND LOCATIONS BASED ON MAPPING OBTAINED FROM THE UNITED STATES DEPARTMENT OF AGRICULTURE (USDA) NATURAL RESOURCES CONSERVATION SERVICES (NRCS) SOIL SURVEY GEOGRAPHIC (SSURGO) DATABASE; JUNE 2024.
- IDENTIFICATION, CHARACTERIZATION, AND DELINEATION OF AQUATIC RESOURCES BASED ON FIELD SURVEYS PERFORMED BY TETRA TECH, INC.; OCTOBER - NOVEMBER 2023 AND APRIL - MAY 2024.
- 100-YEAR FLOODWAY BASED ON MAPPING OBTAINED FROM THE FEDERAL EMERGENCY MANAGEMENT AGENCY (FEMA) DATABASE; OR, IS OTHERWISE IDENTIFIED AS AN ASSUMED 50-FT OFFSET FROM STREAM ORDINARY HIGH WATER MARK IN THE ABSENCE OF FEMA MAPPING.

3. CONTRACTOR RESPONSIBILITY

THE CONTRACTOR, ALTHOUGH UNKNOWN AT TIME OF PLAN ISSUANCE, WILL BE IDENTIFIED BY NATIONAL FUEL GAS SUPPLY CORPORATION AT CONTRACT BID. THE CONTRACTOR IS RESPONSIBLE FOR ALL MEANS, METHODS, PROCEDURES, SEQUENCING, AND TECHNIQUES INVOLVED WITH ALL CONSTRUCTION ACTIVITIES. THE CONTRACTOR SHALL BE SOLELY RESPONSIBLE FOR MAINTAINING AND PRESERVING THE INTEGRITY OF ALL ENVIRONMENTAL FEATURES AND/OR ALL AREAS THAT ARE NOT TO BE DISTURBED. PRIOR TO ANY EARTH DISTURBANCE ACTIVITIES, THE CONTRACTOR IS RESPONSIBLE FOR VERIFYING ACCURACY OF FIELD CONDITIONS DEPICTED ON THE PLAN DRAWINGS AND FOR NOTIFYING NATIONAL FUEL GAS SUPPLY CORPORATION OF ANY DISCREPANCIES.



**TETRA TECH**

WWW.TETRATECH.COM

301 ELLICOTT STREET  
BUFFALO, NY 14203  
T: (716) 849-9419 | F: (716) 849-9420

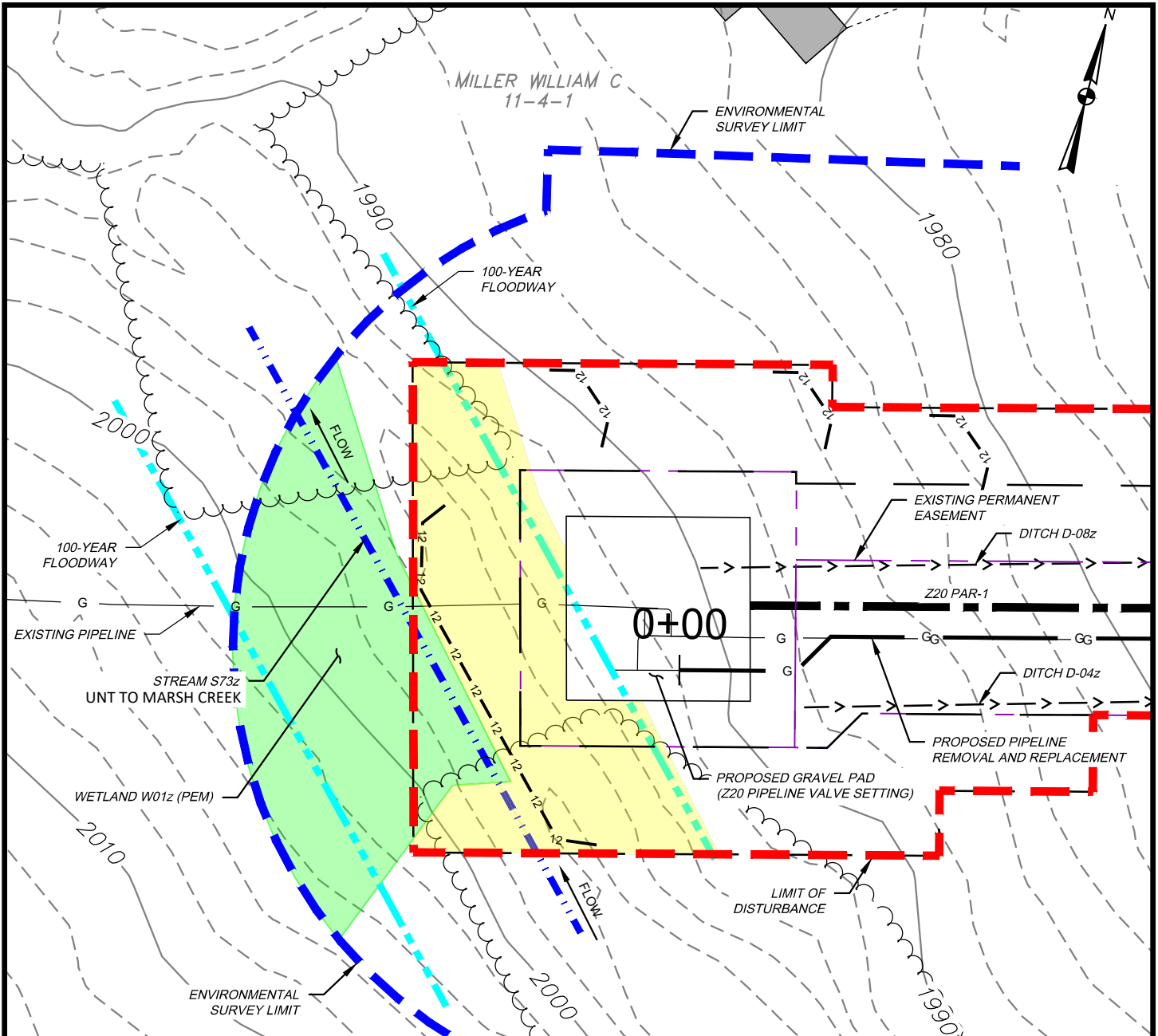
NATIONAL FUEL GAS SUPPLY CORPORATION  
TIOGA PATHWAY PROJECT

SITE SPECIFICS  
GENERAL NOTES

DATE:	11/01/2024
PROJECT NO.:	212C-BF-00493
DESIGNED BY:	BC
DRAWN BY:	BC / JZ
CHECKED BY:	RD
SHEET:	3 OF 3

COPYRIGHT TETRA TECH INC.

**NOTES**



**WETLAND IMPACT**

APPROX. MILEPOST	WETLAND I.D.	LATITUDE	LONGITUDE	MUNICIPALITY	TEMP. IMPACT (ACRES)			PERM. IMPACT (ACRES)			SUBFACILITY CODE
					PEM	PSS	PFO	PEM	PSS	PFO	
0.00	W01z	41.966832	-77.718405	HARRISON	0.027	-	-	0.000	-	-	PIPE; TMPWI; WTDIM

**WATERBODY IMPACT**

MILEPOST	FEATURE I.D.	STREAM NAME	FLOW REGIME	BANK TO BANK WIDTH (FEET)	LATITUDE	LONGITUDE	STREAMS		FLOODWAYS		SUBFACILITY CODE
							TEMP. (AC.)	PERM. (AC.)	TEMP. (AC.)	PERM. (AC.)	
Z20 VALVE SETTING	S73z	UNT TO MARSH CREEK	INTERMITTENT	12	41.966834	-77.718357	0.025	0.000	0.215	0.022	BRDG; FLACT



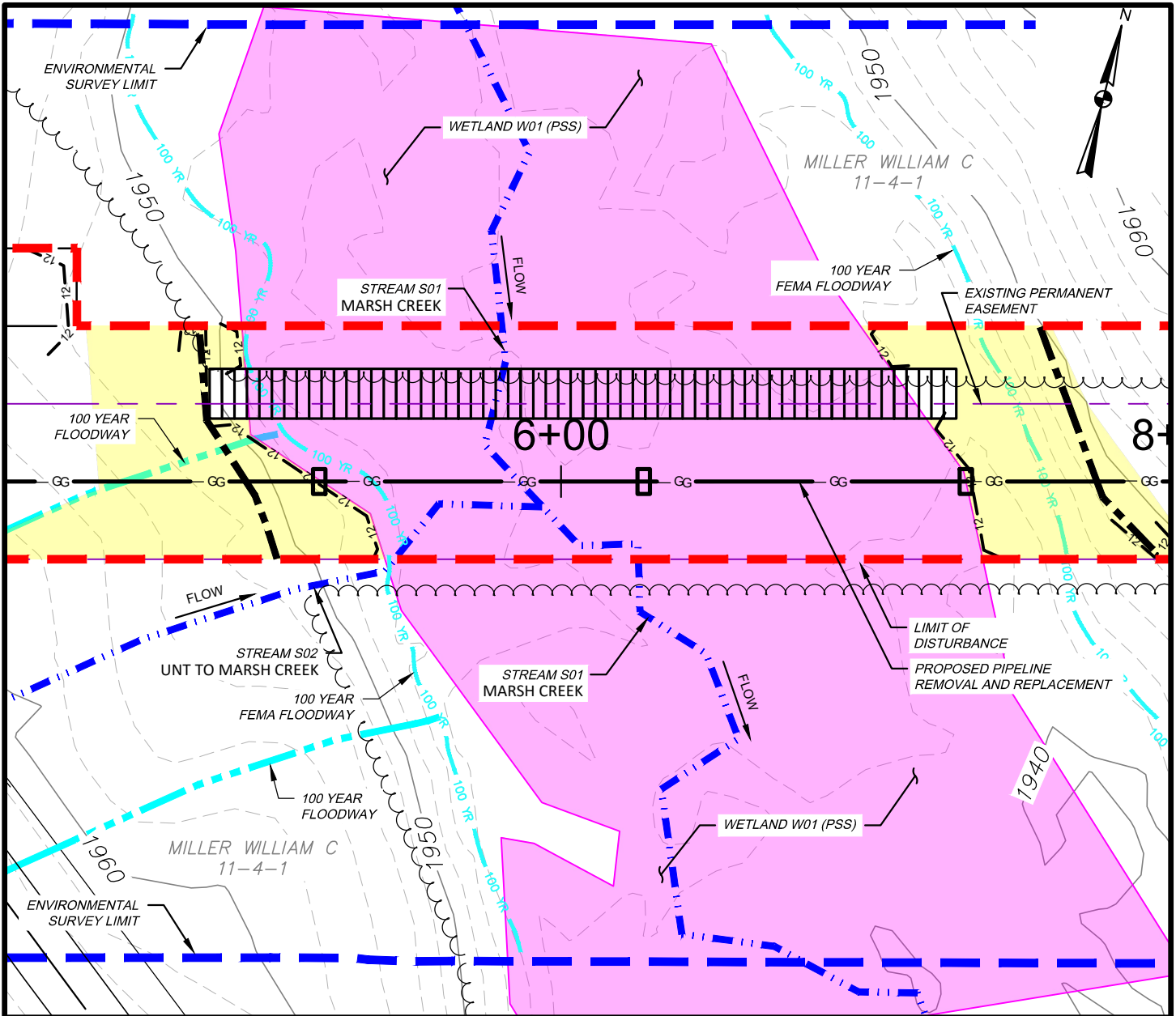
**TETRA TECH**

WWW.TETRATECH.COM

301 ELLICOTT STREET  
BUFFALO, NY 14203  
T: (716) 849-9419 | F: (716) 849-9420

**NATIONAL FUEL GAS SUPPLY CORPORATION**  
**TIOGA PATHWAY PROJECT**  
**SITE SPECIFICS**  
**Z20 PIPELINE REPLACEMENT**  
**HARRISON TWP, POTTER COUNTY**  
 SCALE: 1" = 50'

DATE:	11/01/2024
PROJECT NO.:	212C-BF-00493
DESIGNED BY:	BC
DRAWN BY:	BC / JZ
CHECKED BY:	RD
SHEET:	1 OF 1
COPYRIGHT TETRA TECH INC.	
<b>FIGURE 1</b>	



**WETLAND IMPACT**

APPROX. MILEPOST	WETLAND I.D.	LATITUDE	LONGITUDE	MUNICIPALITY	TEMP. IMPACT (ACRES)			PERM. IMPACT (ACRES)			SUBFACILITY CODE
					PEM	PSS	PFO	PEM	PSS	PFO	
0.10	W01	41.967236	-77.715901	HARRISON	-	0.355	-	-	0.000	-	PIPE; TMPWI; WTDIM

**WATERBODY IMPACT**

MILEPOST	FEATURE I.D.	STREAM NAME	FLOW REGIME	BANK TO BANK WIDTH (FEET)	LATITUDE	LONGITUDE	STREAMS		FLOODWAYS		SUBFACILITY CODE
							TEMP. (AC.)	PERM. (AC.)	TEMP. (AC.)	PERM. (AC.)	
0.10	S01	MARSH CREEK	PERENNIAL	12	41.967218	-77.716046	0.029	0.000	0.477	0.000	PIPE; BRDG; FLACT
0.10	S02	UNT TO MARSH CREEK	PERENNIAL	2	41.967179	-77.716108	0.002	0.000			PIPE; BRDG; FLACT



**TETRA TECH**

WWW.TETRATECH.COM

301 ELLICOTT STREET  
BUFFALO, NY 14203  
T: (716) 849-9419 | F: (716) 849-9420

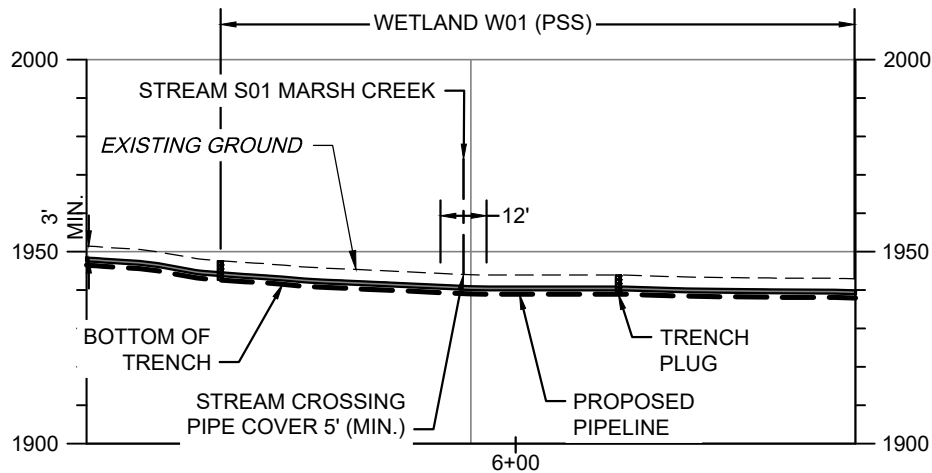
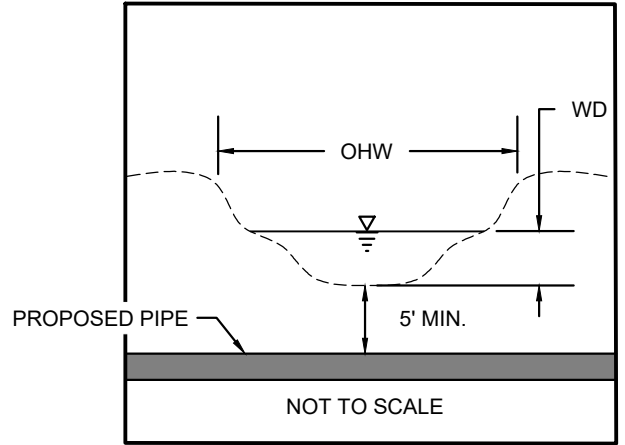
NATIONAL FUEL GAS SUPPLY CORPORATION  
TIOGA PATHWAY PROJECT  
SITE SPECIFICS  
Z20 PIPELINE REPLACEMENT  
HARRISON TWP, POTTER COUNTY  
SCALE: 1" = 50'

DATE: 11/01/2024  
PROJECT NO.: 212C-BF-00493  
DESIGNED BY: BC  
DRAWN BY: BC / JZ  
CHECKED BY: RD  
SHEET: 1 OF 2

COPYRIGHT TETRA TECH INC.

**FIGURE 2**

S01 BANK TO BANK WIDTH (OHW) = 12'  
 S01 WATER DEPTH (WD) = 4"



SCALE: HORIZ: 1" = 50'  
 VERT: 1" = 50'

**STREAM S01 - PIPELINE CROSSING PROFILE**

**NOTES:**

1. THE EXISTING AND PROPOSED CONTOURS WILL BE THE SAME. THE STREAM WILL BE RESTORED TO PRECONSTRUCTION CONDITIONS.
2. STREAMS WITH PERCEPTIBLE FLOW WILL BE CROSSED USING A DRY CONSTRUCTION METHOD. HOWEVER, STREAMS WITH NO FLOW AT TIME OF CONSTRUCTION WILL BE OPEN CUT.



**TETRA TECH**

WWW.TETRATECH.COM

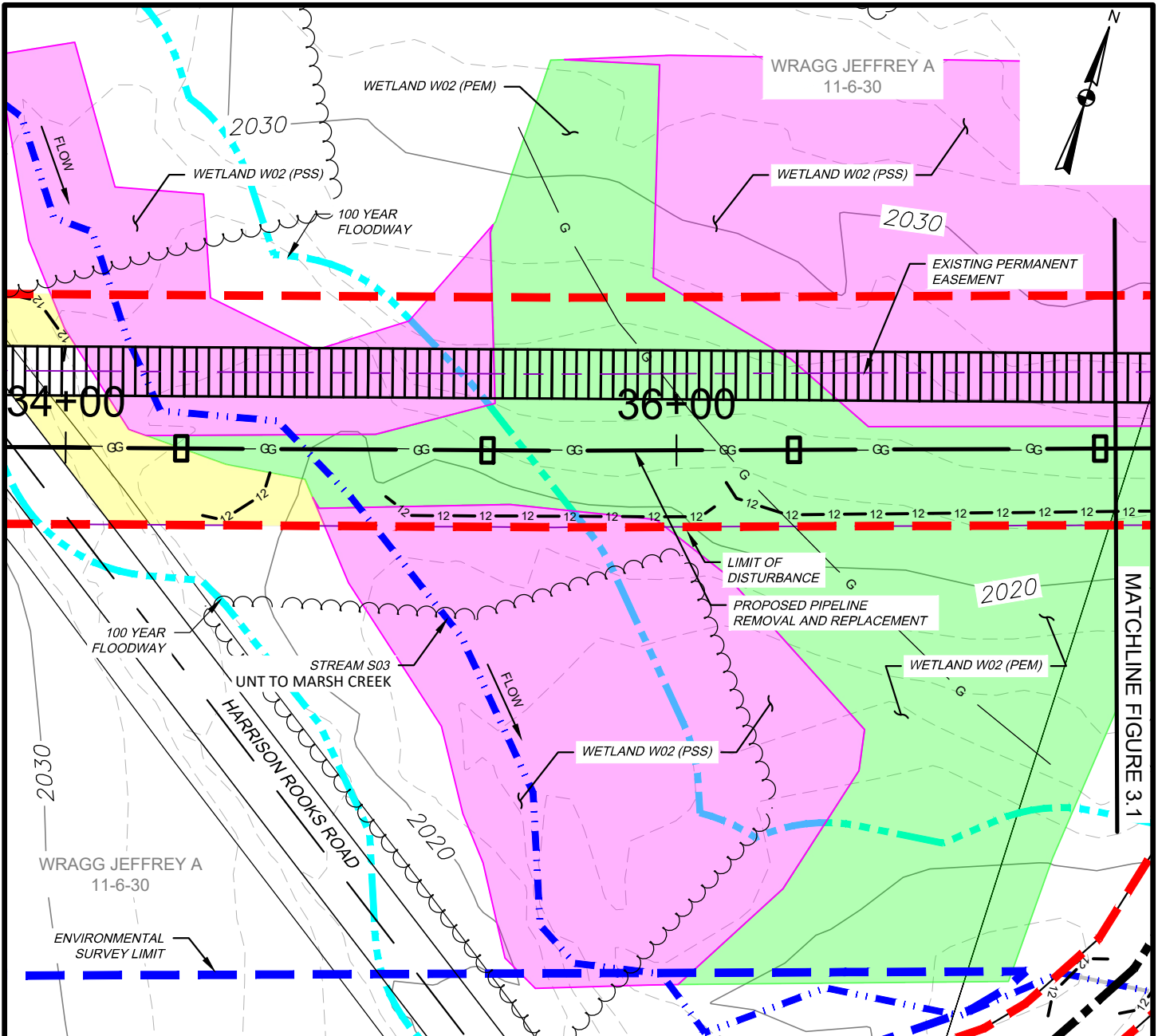
301 ELLICOTT STREET  
 BUFFALO, NY 14203  
 T: (716) 849-9419 | F: (716) 849-9420

NATIONAL FUEL GAS SUPPLY CORPORATION  
 TIOGA PATHWAY PROJECT  
 SITE SPECIFICS  
 Z20 PIPELINE REPLACEMENT  
 HARRISON TWP, POTTER COUNTY  
 SCALE: AS NOTED

DATE:	11/01/2024
PROJECT NO.:	212C-BF-00493
DESIGNED BY:	BC
DRAWN BY:	BC / JZ
CHECKED BY:	RD
SHEET:	2 OF 2

COPYRIGHT TETRA TECH INC.

**FIGURE 2A**



WETLAND IMPACT

APPROX. MILEPOST	WETLAND I.D.	LATITUDE	LONGITUDE	MUNICIPALITY	TEMP. IMPACT (ACRES)			PERM. IMPACT (ACRES)			SUBFACILITY CODE
					PEM	PSS	PFO	PEM	PSS	PFO	
0.70	W02	41.968985	-77.705062	HARRISON	0.516	0.351	-	0.000	0.000	-	PIPE; TMPWI; WTDIM

WATERBODY IMPACT

MILEPOST	FEATURE I.D.	STREAM NAME	FLOW REGIME	BANK TO BANK WIDTH (FEET)	LATITUDE	LONGITUDE	STREAMS		FLOODWAYS		SUBFACILITY CODE
							TEMP. (AC.)	PERM. (AC.)	TEMP. (AC.)	PERM. (AC.)	
0.65	S03	UNT TO MARSH CREEK	PERENNIAL	8	41.968702	-77.705193	0.023	0.000	0.029	0.000	PIPE; BRDG; FLACT



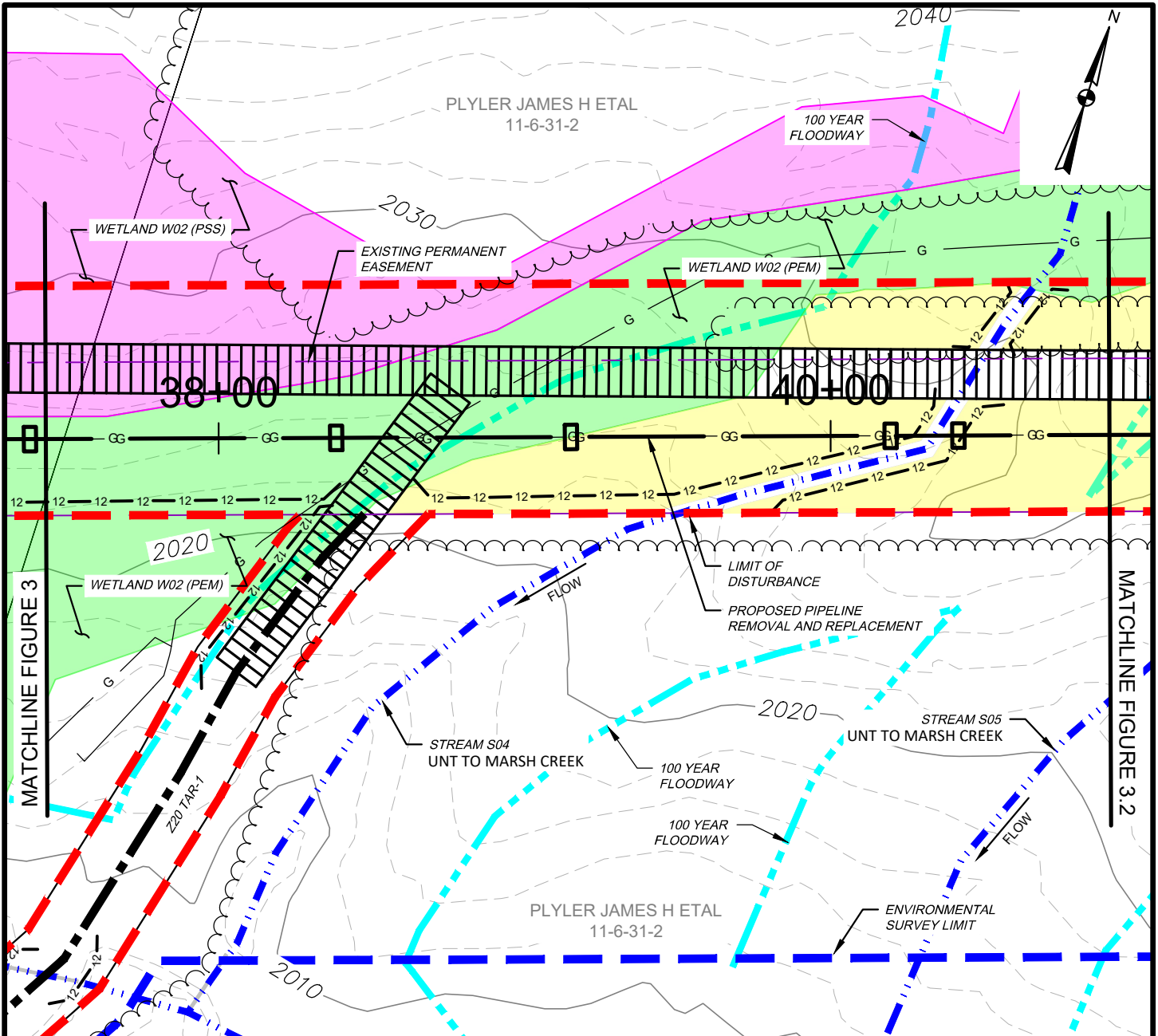
**TETRA TECH**

WWW.TETRATECH.COM

301 ELLICOTT STREET  
BUFFALO, NY 14203  
T: (716) 849-9419 | F: (716) 849-9420

NATIONAL FUEL GAS SUPPLY CORPORATION  
TIOGA PATHWAY PROJECT  
SITE SPECIFICS  
Z20 PIPELINE REPLACEMENT  
HARRISON TWP, POTTER COUNTY  
SCALE: 1" = 50'

DATE:	11/01/2024
PROJECT NO.:	212C-BF-00493
DESIGNED BY:	BC
DRAWN BY:	BC / JZ
CHECKED BY:	RD
SHEET:	1 OF 5
COPYRIGHT TETRA TECH INC.	
<b>FIGURE 3</b>	



WETLAND IMPACT

APPROX. MILEPOST	WETLAND I.D.	LATITUDE	LONGITUDE	MUNICIPALITY	TEMP. IMPACT (ACRES)			PERM. IMPACT (ACRES)			SUBFACILITY CODE
					PEM	PSS	PFO	PEM	PSS	PFO	
0.70	W02	41.968985	-77.705062	HARRISON	0.516	0.351	-	0.000	0.000	-	PIPE; TMPWI; WTDIM

WATERBODY IMPACT

MILEPOST	FEATURE I.D.	STREAM NAME	FLOW REGIME	BANK TO BANK WIDTH (FEET)	LATITUDE	LONGITUDE	STREAMS		FLOODWAYS		SUBFACILITY CODE
							TEMP. (AC.)	PERM. (AC.)	TEMP. (AC.)	PERM. (AC.)	
0.75	S04	UNT TO MARSH CREEK	PERENNIAL	6	41.969286	-77.703812	0.020	0.000	0.333	0.000	PIPE; BRDGM; FLACT



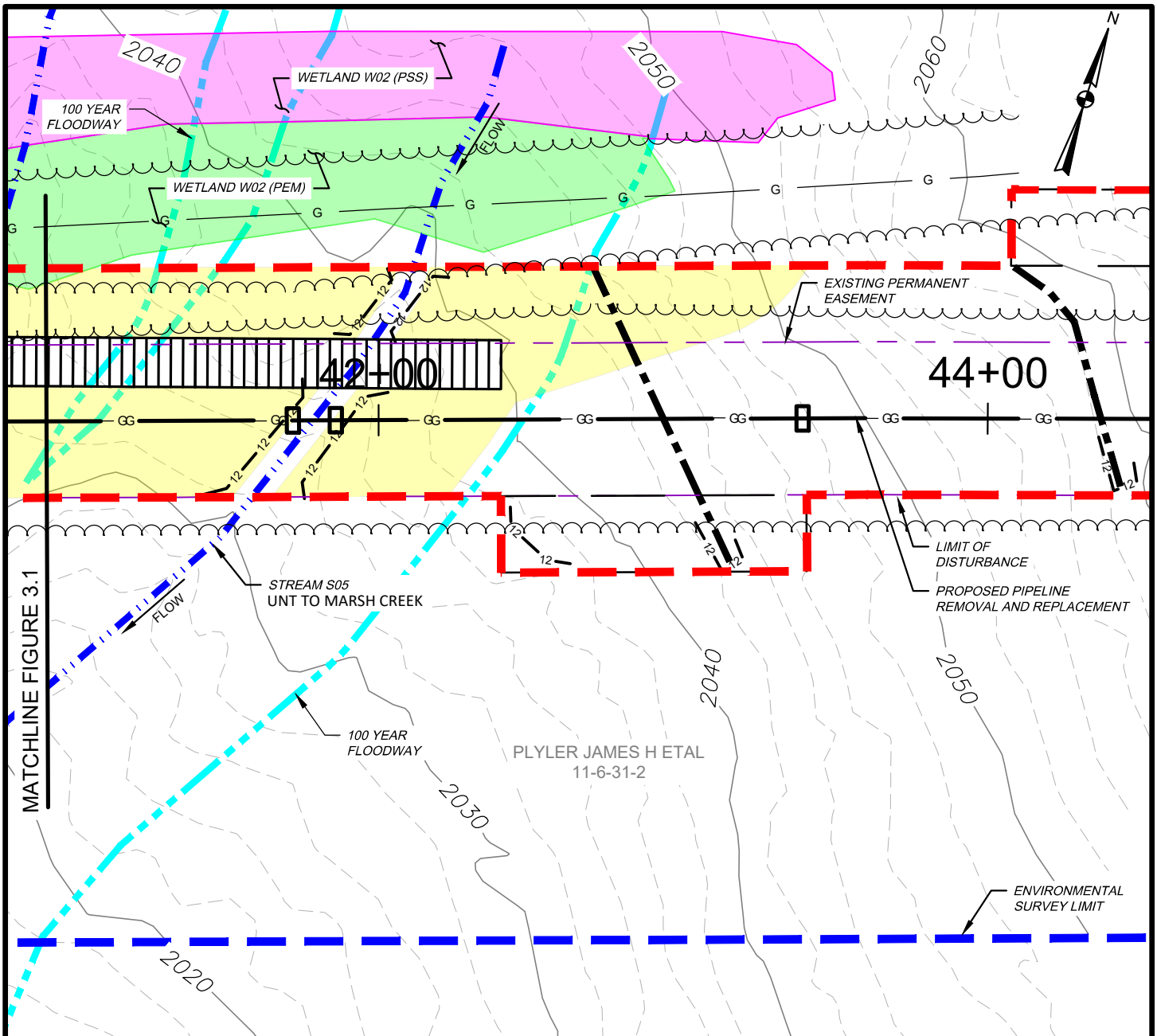
**TETRA TECH**

WWW.TETRATECH.COM

301 ELLICOTT STREET  
BUFFALO, NY 14203  
T: (716) 849-9419 | F: (716) 849-9420

NATIONAL FUEL GAS SUPPLY CORPORATION  
TIOGA PATHWAY PROJECT  
SITE SPECIFICS  
Z20 PIPELINE REPLACEMENT  
HARRISON TWP, POTTER COUNTY  
SCALE: 1" = 50'

DATE:	11/01/2024
PROJECT NO.:	212C-BF-00493
DESIGNED BY:	BC
DRAWN BY:	BC / JZ
CHECKED BY:	RD
SHEET:	2 OF 5
COPYRIGHT TETRA TECH INC.	
<b>FIGURE 3.1</b>	



WETLAND IMPACT

APPROX. MILEPOST	WETLAND I.D.	LATITUDE	LONGITUDE	MUNICIPALITY	TEMP. IMPACT (ACRES)			PERM. IMPACT (ACRES)			SUBFACILITY CODE
					PEM	PSS	PFO	PEM	PSS	PFO	
0.70	W02	41.968985	-77.705062	HARRISON	0.516	0.351	-	0.000	0.000	-	PIPE; TMPWI; WTDIM

WATERBODY IMPACT

MILEPOST	FEATURE I.D.	STREAM NAME	FLOW REGIME	BANK TO BANK WIDTH (FEET)	LATITUDE	LONGITUDE	STREAMS		FLOODWAYS		SUBFACILITY CODE
							TEMP. (AC.)	PERM. (AC.)	TEMP. (AC.)	PERM. (AC.)	
0.80	S05	UNT TO MARSH CREEK	EPHEMERAL	10	41.969407	-77.703308	0.022	0.000	0.235	0.000	PIPE; BRDGD; FLACT



**TETRA TECH**

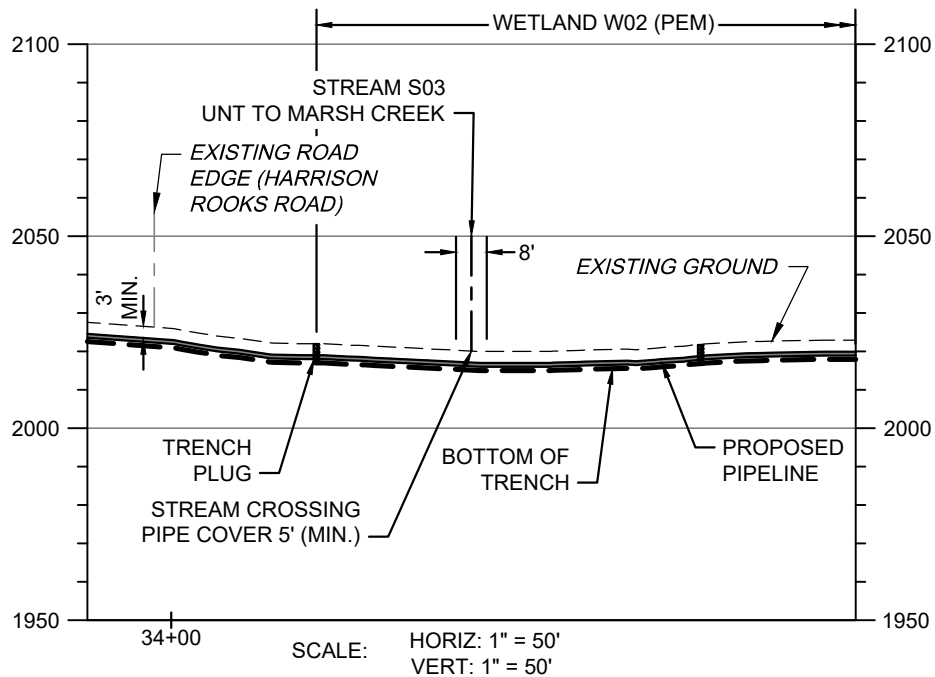
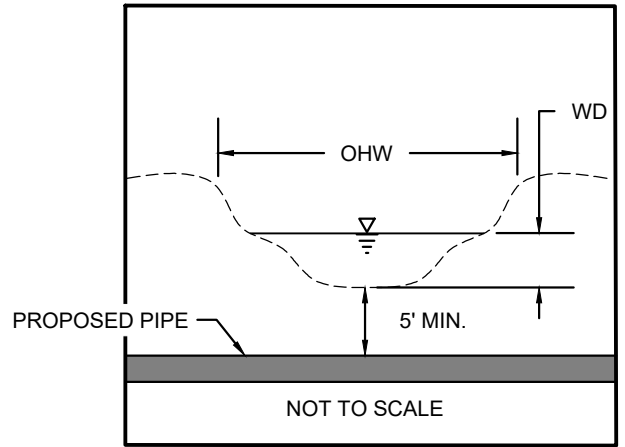
WWW.TETRATECH.COM

301 ELLICOTT STREET  
BUFFALO, NY 14203  
T: (716) 849-9419 | F: (716) 849-9420

NATIONAL FUEL GAS SUPPLY CORPORATION  
TIOGA PATHWAY PROJECT  
SITE SPECIFICS  
Z20 PIPELINE REPLACEMENT  
HARRISON TWP, POTTER COUNTY  
SCALE: 1" = 50'

DATE:	11/01/2024
PROJECT NO.:	212C-BF-00493
DESIGNED BY:	BC
DRAWN BY:	BC / JZ
CHECKED BY:	RD
SHEET:	3 OF 5
COPYRIGHT TETRA TECH INC.	
<b>FIGURE 3.2</b>	

S03 BANK TO BANK WIDTH (OHW) = 8'  
 S03 WATER DEPTH (WD) = 5"



**STREAM S03 - PIPELINE CROSSING PROFILE**

**NOTES:**

1. THE EXISTING AND PROPOSED CONTOURS WILL BE THE SAME. THE STREAM WILL BE RESTORED TO PRECONSTRUCTION CONDITIONS.
2. STREAMS WITH PERCEPTIBLE FLOW WILL BE CROSSED USING A DRY CONSTRUCTION METHOD. HOWEVER, STREAMS WITH NO FLOW AT TIME OF CONSTRUCTION WILL BE OPEN CUT.



**TETRA TECH**

WWW.TETRATECH.COM

301 ELLICOTT STREET  
 BUFFALO, NY 14203  
 T: (716) 849-9419 | F: (716) 849-9420

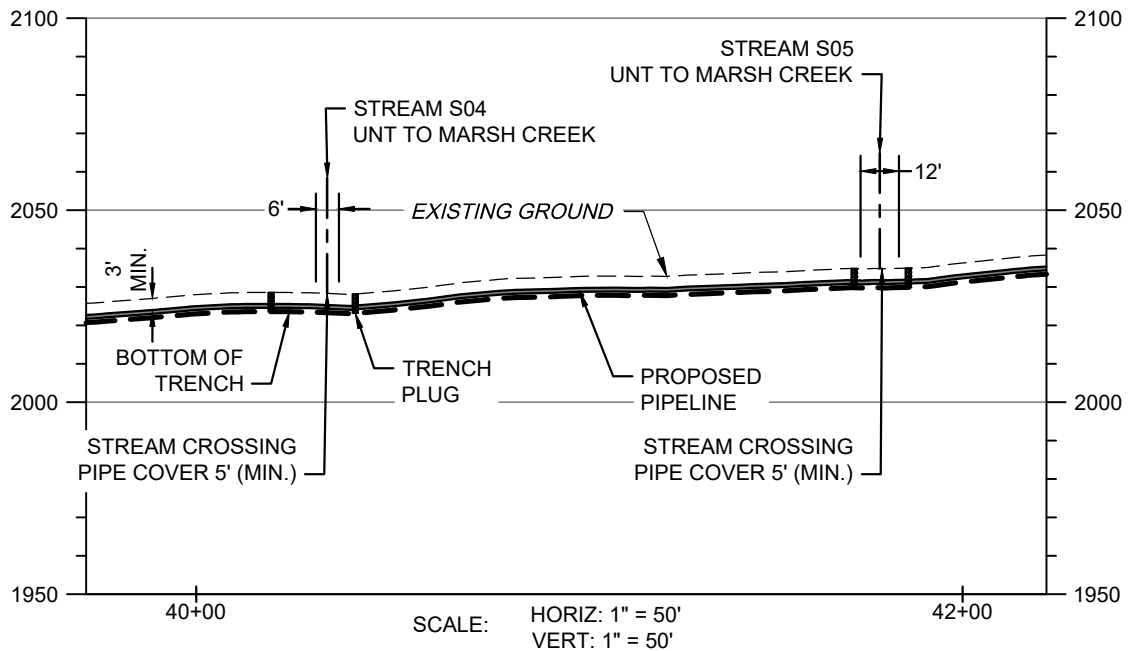
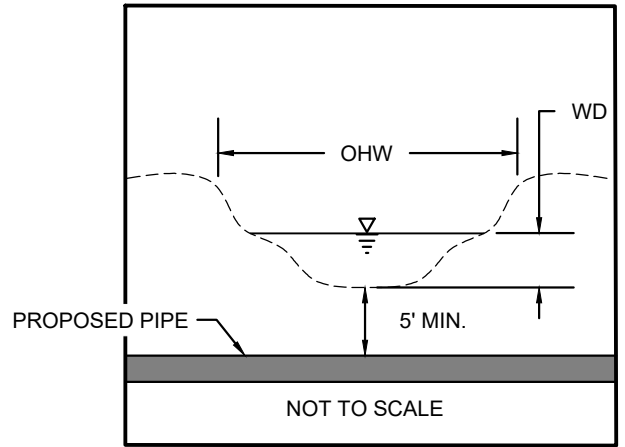
NATIONAL FUEL GAS SUPPLY CORPORATION  
 TIOGA PATHWAY PROJECT  
 SITE SPECIFICS  
 Z20 PIPELINE REPLACEMENT  
 HARRISON TWP, POTTER COUNTY  
 SCALE: AS NOTED

DATE:	11/01/2024
PROJECT NO.:	212C-BF-00493
DESIGNED BY:	BC
DRAWN BY:	BC / JZ
CHECKED BY:	RD
SHEET:	4 OF 5

COPYRIGHT TETRA TECH INC.

**FIGURE 3A**

S04 BANK TO BANK WIDTH (OHW) = 6'  
 S04 WATER DEPTH (WD) = 2"  
 S05 BANK TO BANK WIDTH (OHW) = 10'  
 S05 WATER DEPTH (WD) = 0"



**STREAM S04 & S05 PIPELINE CROSSING PROFILE**

**NOTES:**

1. THE EXISTING AND PROPOSED CONTOURS WILL BE THE SAME. THE STREAM WILL BE RESTORED TO PRECONSTRUCTION CONDITIONS.
2. STREAMS WITH PERCEPTIBLE FLOW WILL BE CROSSED USING A DRY CONSTRUCTION METHOD. HOWEVER, STREAMS WITH NO FLOW AT TIME OF CONSTRUCTION WILL BE OPEN CUT.



**TETRA TECH**

WWW.TETRATECH.COM

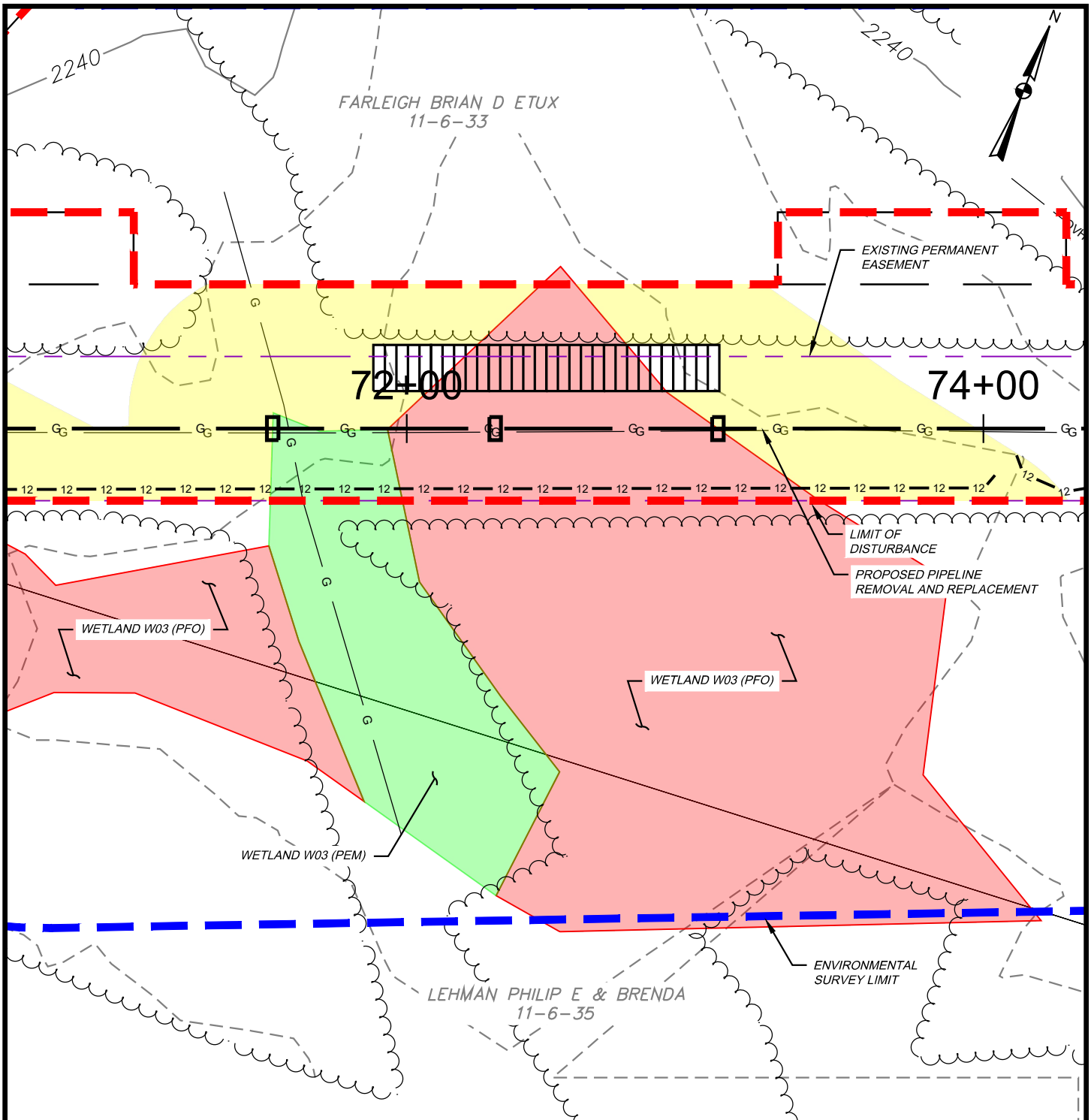
301 ELLICOTT STREET  
 BUFFALO, NY 14203  
 T: (716) 849-9419 | F: (716) 849-9420

NATIONAL FUEL GAS SUPPLY CORPORATION  
 TIOGA PATHWAY PROJECT  
 SITE SPECIFICS  
 Z20 PIPELINE REPLACEMENT  
 HARRISON TWP, POTTER COUNTY  
 SCALE: AS NOTED

DATE:	11/01/2024
PROJECT NO.:	212C-BF-00493
DESIGNED BY:	BC
DRAWN BY:	BC / JZ
CHECKED BY:	RD
SHEET:	5 OF 5

COPYRIGHT TETRA TECH INC.

**FIGURE 3B**



**WETLAND IMPACT**

APPROX. MILEPOST	WETLAND I.D.	LATITUDE	LONGITUDE	MUNICIPALITY	TEMP. IMPACT (ACRES)			PERM. IMPACT (ACRES)			SUBFACILITY CODE
					PEM	PSS	PFO	PEM	PSS	PFO	
1.35	W03	41.971927	-77.692612	HARRISON	0.025	-	0.145	0.000	-	0.000	PIPE; TMPWI; WTDIM



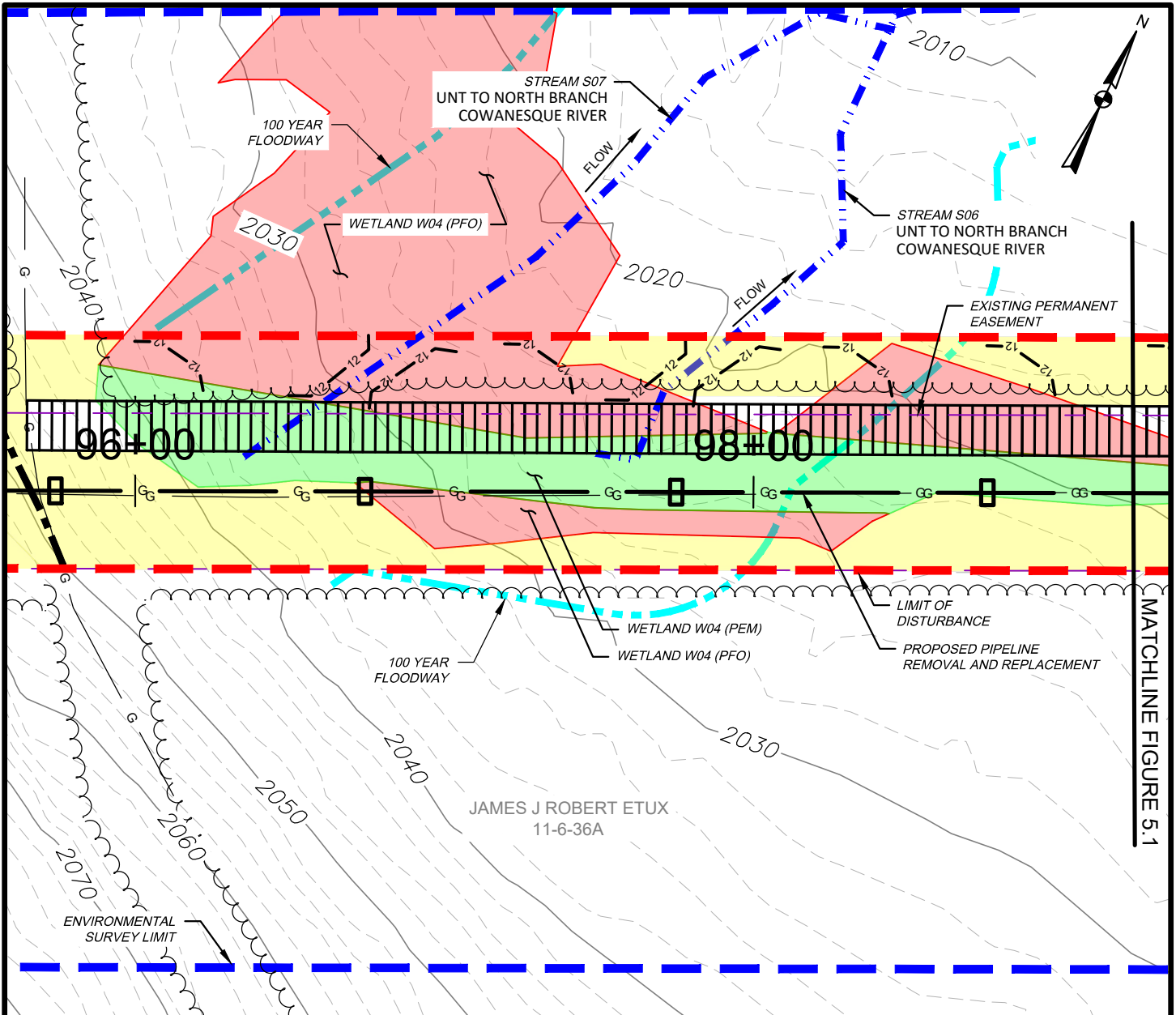
**TETRA TECH**

WWW.TETRATECH.COM

301 ELLICOTT STREET  
 BUFFALO, NY 14203  
 T: (716) 849-9419 | F: (716) 849-9420

**NATIONAL FUEL GAS SUPPLY CORPORATION**  
**TIOGA PATHWAY PROJECT**  
**SITE SPECIFICS**  
**Z20 PIPELINE REPLACEMENT**  
**HARRISON TWP, POTTER COUNTY**  
 SCALE: 1" = 50'

DATE:	11/01/2024
PROJECT NO.:	212C-BF-00493
DESIGNED BY:	BC
DRAWN BY:	BC / JZ
CHECKED BY:	RD
SHEET:	1 OF 1
COPYRIGHT TETRA TECH INC.	
<b>FIGURE 4</b>	



**WETLAND IMPACT**

APPROX. MILEPOST	WETLAND I.D.	LATITUDE	LONGITUDE	MUNICIPALITY	TEMP. IMPACT (ACRES)			PERM. IMPACT (ACRES)			SUBFACILITY CODE
					PEM	PSS	PFO	PEM	PSS	PFO	
1.84	W04	41.974176	-77.683657	HARRISON	0.194	-	0.195	0.000	-	0.000	PIPE; TMPWI; WTDIM

**WATERBODY IMPACT**

MILEPOST	FEATURE I.D.	STREAM NAME	FLOW REGIME	BANK TO BANK WIDTH (FEET)	LATITUDE	LONGITUDE	STREAMS		FLOODWAYS		SUBFACILITY CODE
							TEMP. (AC.)	PERM. (AC.)	TEMP. (AC.)	PERM. (AC.)	
1.85	S06	UNT TO N. BRANCH COWANESQUE RIV.	INTERMITTENT	15	41.974183	-77.683917	0.024	0.000	0.439	0.000	PIPE; BRDG; FLACT
1.85	S07	UNT TO N. BRANCH COWANESQUE RIV.	INTERMITTENT	15	41.974085	-77.684287	0.025	0.000			PIPE; BRDG; FLACT



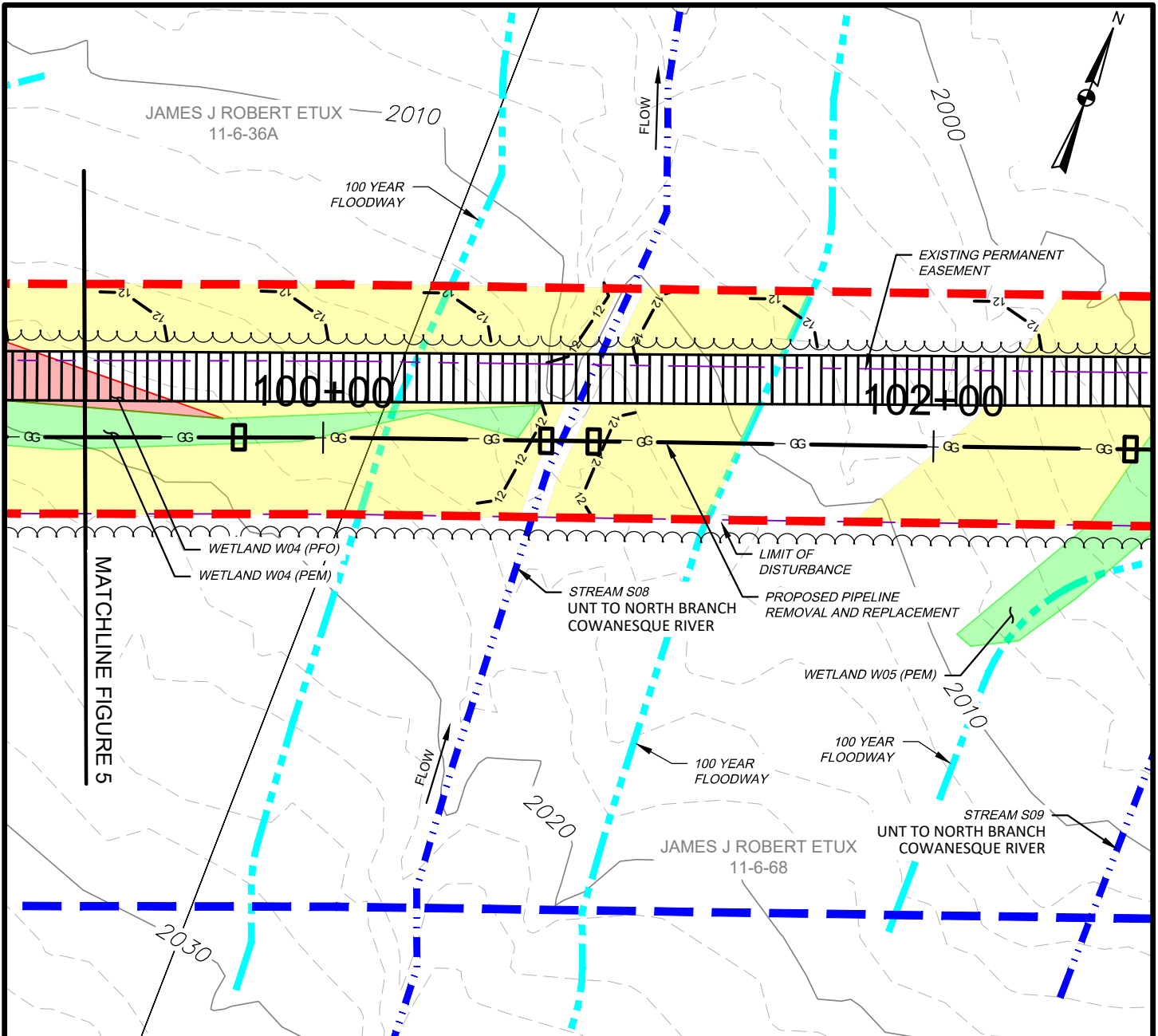
**TETRA TECH**

WWW.TETRATECH.COM

301 ELLICOTT STREET  
BUFFALO, NY 14203  
T: (716) 849-9419 | F: (716) 849-9420

NATIONAL FUEL GAS SUPPLY CORPORATION  
TIOGA PATHWAY PROJECT  
SITE SPECIFICS  
Z20 PIPELINE REPLACEMENT  
HARRISON TWP, POTTER COUNTY  
SCALE: 1" = 50'

DATE:	11/01/2024
PROJECT NO.:	212C-BF-00493
DESIGNED BY:	BC
DRAWN BY:	BC / JZ
CHECKED BY:	RD
SHEET:	1 OF 3
COPYRIGHT TETRA TECH INC.	
<b>FIGURE 5</b>	



WETLAND IMPACT

APPROX. MILEPOST	WETLAND I.D.	LATITUDE	LONGITUDE	MUNICIPALITY	TEMP. IMPACT (ACRES)			PERM. IMPACT (ACRES)			SUBFACILITY CODE
					PEM	PSS	PFO	PEM	PSS	PFO	
1.84	W04	41.974176	-77.683657	HARRISON	0.194	-	0.195	0.000	-	0.000	PIPE; TMPWI; WTDIM

WATERBODY IMPACT

MILEPOST	FEATURE I.D.	STREAM NAME	FLOW REGIME	BANK TO BANK WIDTH (FEET)	LATITUDE	LONGITUDE	STREAMS		FLOODWAYS		SUBFACILITY CODE
							TEMP. (AC.)	PERM. (AC.)	TEMP. (AC.)	PERM. (AC.)	
1.90	S08	UNT TO N. BRANCH COWANESQUE RIV.	EPHEMERAL	8	41.97441	-77.682827	0.015	0.000	0.202	0.000	PIPE; BRDGI; FLACT



**TETRA TECH**

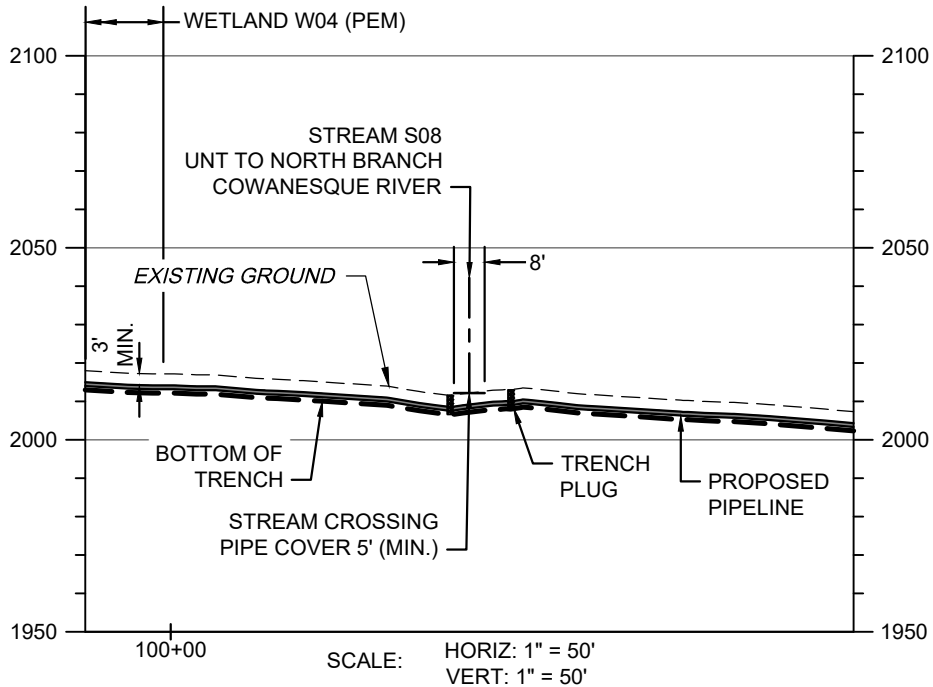
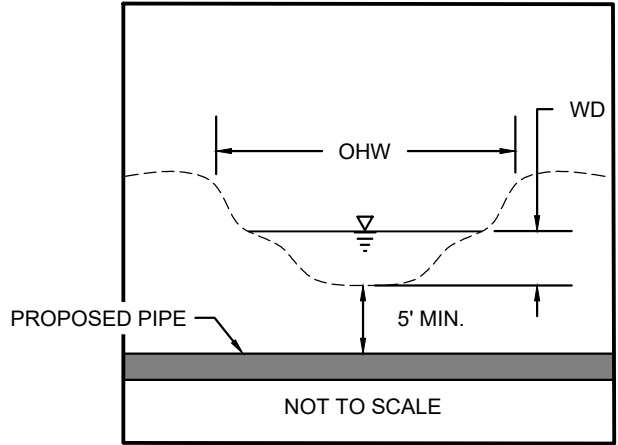
WWW.TETRATECH.COM

301 ELLICOTT STREET  
BUFFALO, NY 14203  
T: (716) 849-9419 | F: (716) 849-9420

NATIONAL FUEL GAS SUPPLY CORPORATION  
TIOGA PATHWAY PROJECT  
SITE SPECIFICS  
Z20 PIPELINE REPLACEMENT  
HARRISON TWP, POTTER COUNTY  
SCALE: 1" = 50'

DATE:	11/01/2024
PROJECT NO.:	212C-BF-00493
DESIGNED BY:	BC
DRAWN BY:	BC / JZ
CHECKED BY:	RD
SHEET:	2 OF 3
COPYRIGHT TETRA TECH INC.	
FIGURE 5.1	

S08 BANK TO BANK WIDTH (OHW) = 8'  
 S08 WATER DEPTH (WD) = 0"



**STREAM S08 - PIPELINE CROSSING PROFILE**

**NOTES:**

1. THE EXISTING AND PROPOSED CONTOURS WILL BE THE SAME. THE STREAM WILL BE RESTORED TO PRECONSTRUCTION CONDITIONS.
2. STREAMS WITH PERCEPTIBLE FLOW WILL BE CROSSED USING A DRY CONSTRUCTION METHOD. HOWEVER, STREAMS WITH NO FLOW AT TIME OF CONSTRUCTION WILL BE OPEN CUT.



**TETRA TECH**

WWW.TETRATECH.COM

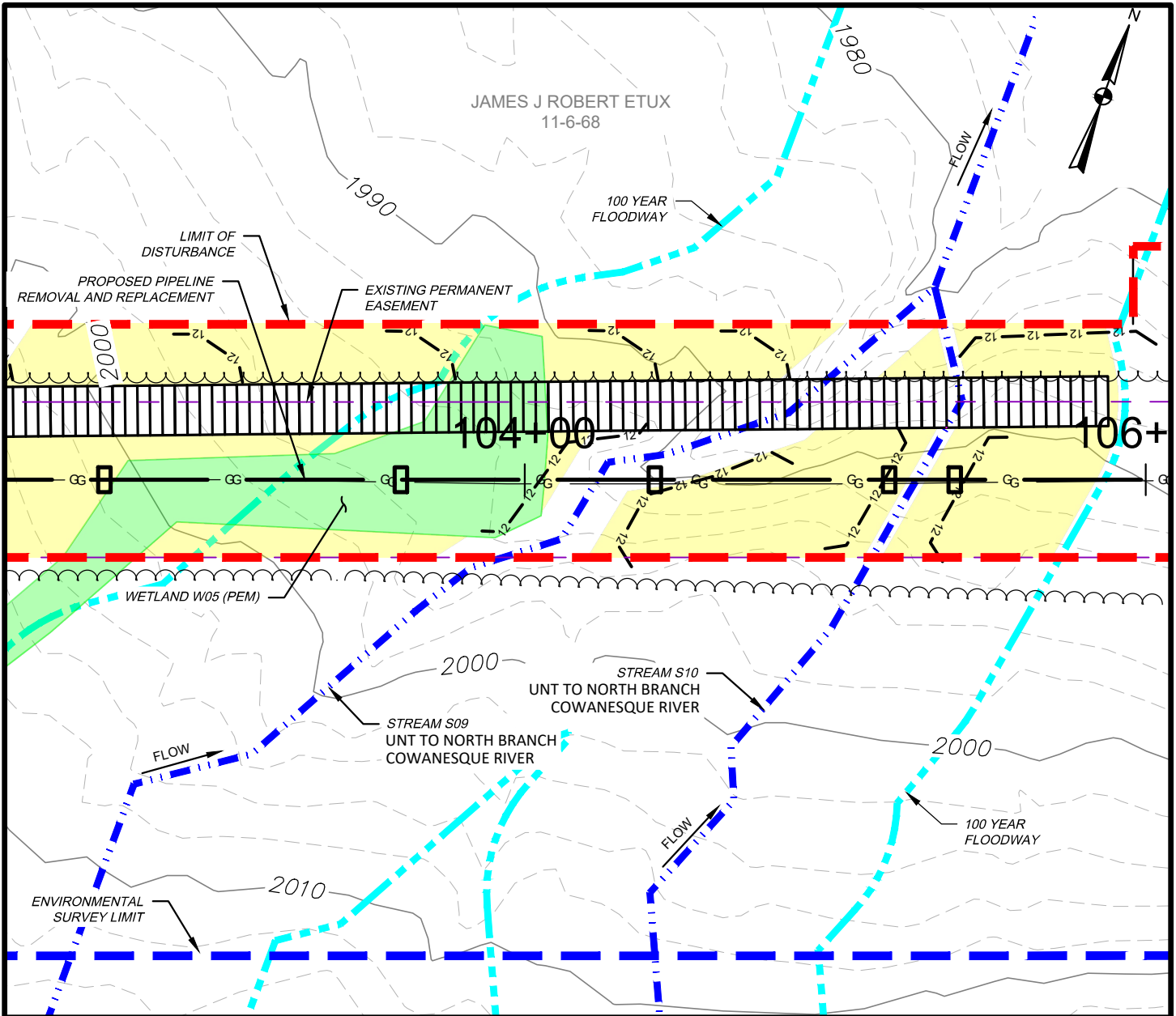
301 ELLICOTT STREET  
 BUFFALO, NY 14203  
 T: (716) 849-9419 | F: (716) 849-9420

NATIONAL FUEL GAS SUPPLY CORPORATION  
 TIOGA PATHWAY PROJECT  
 SITE SPECIFICS  
 Z20 PIPELINE REPLACEMENT  
 HARRISON TWP, POTTER COUNTY  
 SCALE: AS NOTED

DATE:	11/01/2024
PROJECT NO.:	212C-BF-00493
DESIGNED BY:	BC
DRAWN BY:	BC / JZ
CHECKED BY:	RD
SHEET:	3 OF 3

COPYRIGHT TETRA TECH INC.

**FIGURE 5A**



**WETLAND IMPACT**

APPROX. MILEPOST	WETLAND I.D.	LATITUDE	LONGITUDE	MUNICIPALITY	TEMP. IMPACT (ACRES)			PERM. IMPACT (ACRES)			SUBFACILITY CODE
					PEM	PSS	PFO	PEM	PSS	PFO	
1.95	W05	41.974656	-77.681935	HARRISON	0.114	-	-	0.000	-	-	PIPE; TMPWI; WTDIM

**WATERBODY IMPACT**

MILEPOST	FEATURE I.D.	STREAM NAME	FLOW REGIME	BANK TO BANK WIDTH (FEET)	LATITUDE	LONGITUDE	STREAMS		FLOODWAYS		SUBFACILITY CODE
							TEMP. (AC.)	PERM. (AC.)	TEMP. (AC.)	PERM. (AC.)	
1.98	S09	UNT TO N. BRANCH COWANESQUE RIV.	EPHEMERAL	20	41.974373	-77.681639	0.069	0.000	0.427	0.000	PIPE; BRDG; FLACT
1.98	S10	UNT TO N. BRANCH COWANESQUE RIV.	EPHEMERAL	5	41.974835	-77.681285	0.010	0.000			PIPE; BRDG; FLACT



**TETRA TECH**

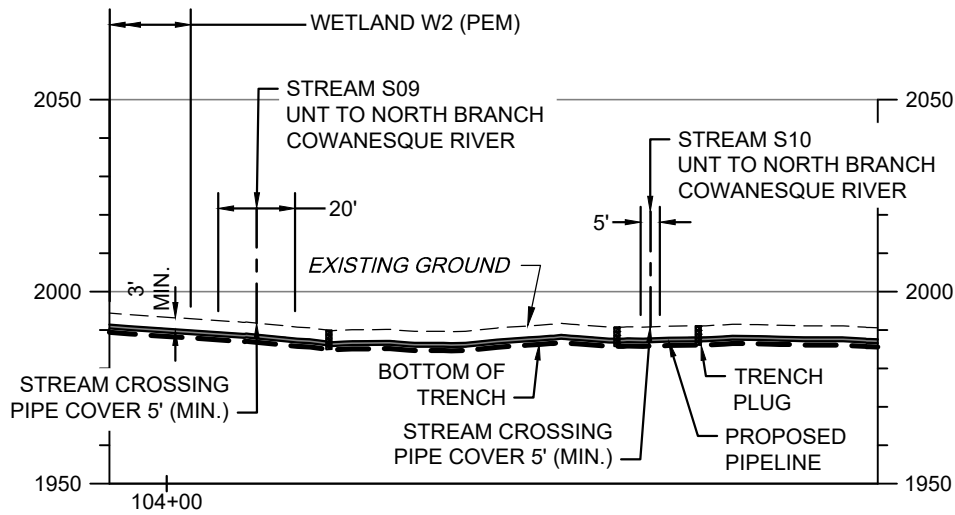
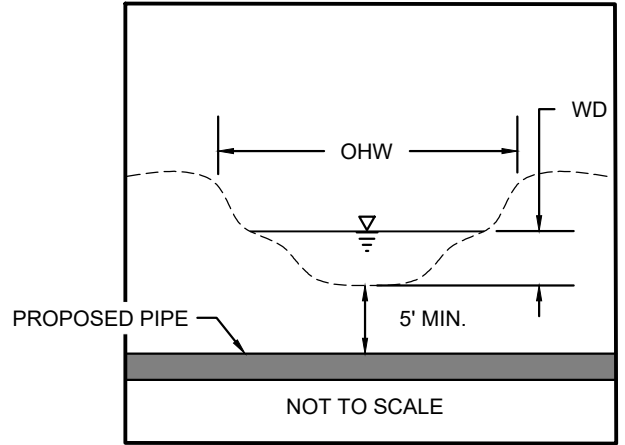
WWW.TETRATECH.COM

301 ELLICOTT STREET  
BUFFALO, NY 14203  
T: (716) 849-9419 | F: (716) 849-9420

NATIONAL FUEL GAS SUPPLY CORPORATION  
TIOGA PATHWAY PROJECT  
SITE SPECIFICS  
Z20 PIPELINE REPLACEMENT  
HARRISON TWP, POTTER COUNTY  
SCALE: 1" = 50'

DATE:	11/01/2024
PROJECT NO.:	212C-BF-00493
DESIGNED BY:	BC
DRAWN BY:	BC / JZ
CHECKED BY:	RD
SHEET:	1 OF 2
COPYRIGHT TETRA TECH INC.	
<b>FIGURE 6</b>	

S09 BANK TO BANK WIDTH (OHW) = 20'  
 S09 WATER DEPTH (WD) = 0"  
 S10 BANK TO BANK WIDTH (OHW) = 5'  
 S10 WATER DEPTH (WD) = 0"



SCALE: HORIZ: 1" = 50'  
 VERT: 1" = 50'

**STREAM S09 & STREAM S10 - PIPELINE CROSSING PROFILE**

**NOTES:**

1. THE EXISTING AND PROPOSED CONTOURS WILL BE THE SAME. THE STREAM WILL BE RESTORED TO PRECONSTRUCTION CONDITIONS.
2. STREAMS WITH PERCEPTIBLE FLOW WILL BE CROSSED USING A DRY CONSTRUCTION METHOD. HOWEVER, STREAMS WITH NO FLOW AT TIME OF CONSTRUCTION WILL BE OPEN CUT.



**TETRA TECH**

WWW.TETRATECH.COM

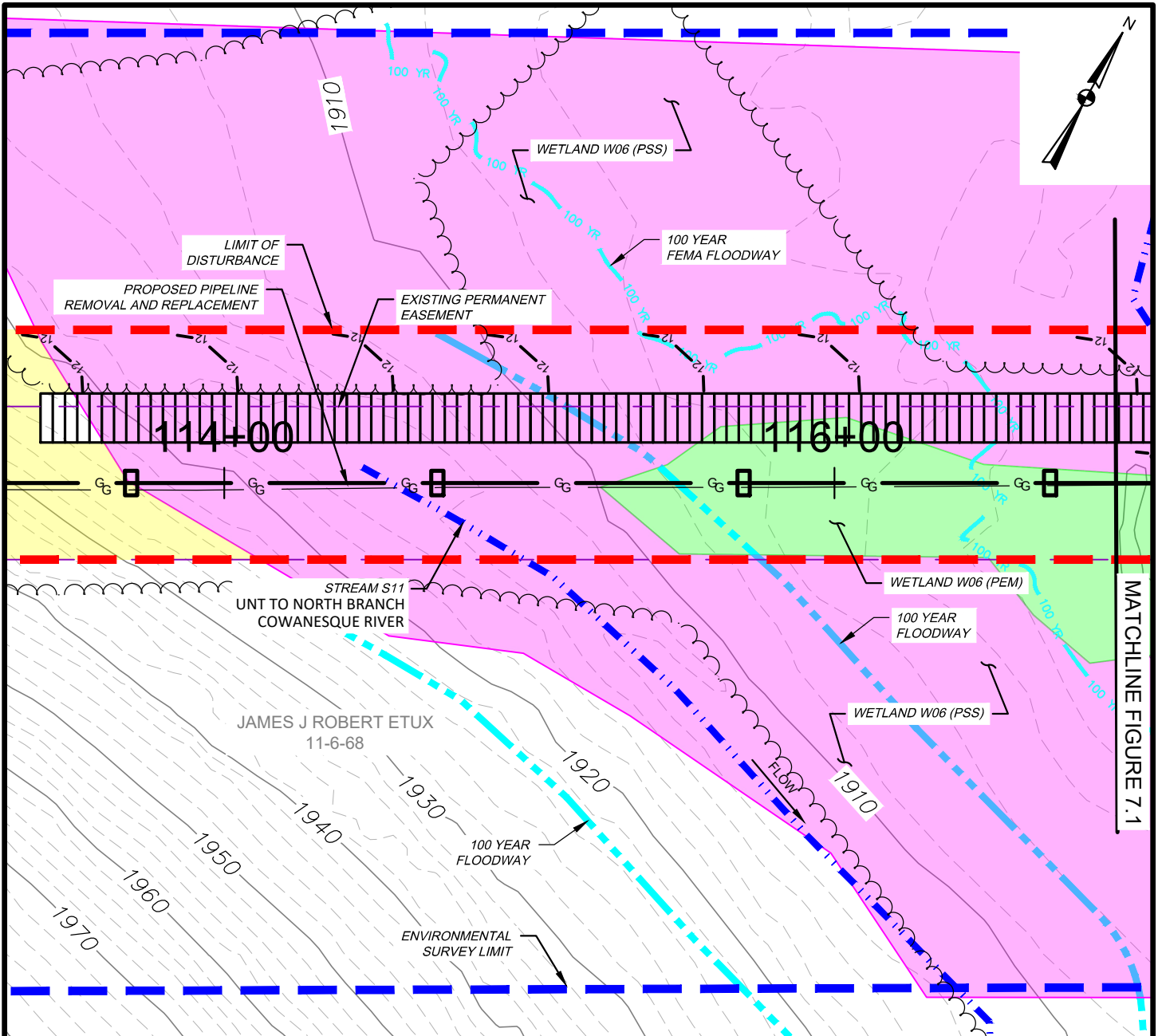
301 ELLICOTT STREET  
 BUFFALO, NY 14203  
 T: (716) 849-9419 | F: (716) 849-9420

NATIONAL FUEL GAS SUPPLY CORPORATION  
 TIOGA PATHWAY PROJECT  
 SITE SPECIFICS  
 Z20 PIPELINE REPLACEMENT  
 HARRISON TWP, POTTER COUNTY  
 SCALE: AS NOTED

DATE:	11/01/2024
PROJECT NO.:	212C-BF-00493
DESIGNED BY:	BC
DRAWN BY:	BC / JZ
CHECKED BY:	RD
SHEET:	2 OF 2

COPYRIGHT TETRA TECH INC.

**FIGURE 6A**



**WETLAND IMPACT**

APPROX. MILEPOST	WETLAND I.D.	LATITUDE	LONGITUDE	MUNICIPALITY	TEMP. IMPACT (ACRES)			PERM. IMPACT (ACRES)			SUBFACILITY CODE
					PEM	PSS	PFO	PEM	PSS	PFO	
2.16	W06	41.976286	-77.67759	HARRISON	0.157	0.842	-	0.000	0.000	-	PIPE; TMPWI; WTDIM

**WATERBODY IMPACT**

MILEPOST	FEATURE I.D.	STREAM NAME	FLOW REGIME	BANK TO BANK WIDTH (FEET)	LATITUDE	LONGITUDE	STREAMS		FLOODWAYS		SUBFACILITY CODE
							TEMP. (AC.)	PERM. (AC.)	TEMP. (AC.)	PERM. (AC.)	
2.18	S11	UNT TO N. BRANCH COWANESQUE RIV.	PERENNIAL	2	41.976008	-77.678276	0.003	0.000	0.223	0.000	PIPE; BRDG; FLACT



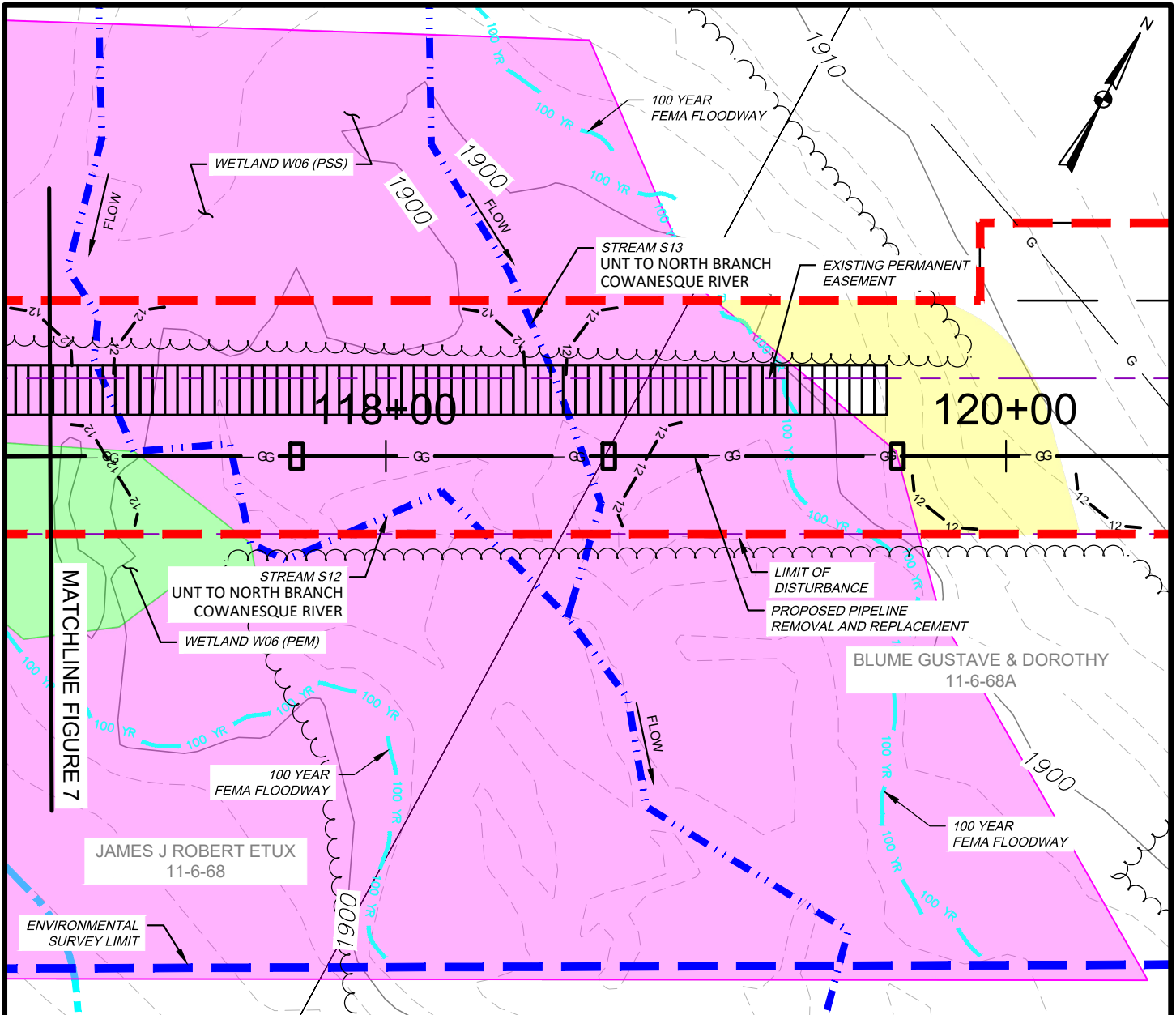
**TETRA TECH**

WWW.TETRATECH.COM

301 ELLICOTT STREET  
BUFFALO, NY 14203  
T: (716) 849-9419 | F: (716) 849-9420

**NATIONAL FUEL GAS SUPPLY CORPORATION**  
**TIOGA PATHWAY PROJECT**  
**SITE SPECIFICS**  
**Z20 PIPELINE REPLACEMENT**  
**HARRISON TWP, POTTER COUNTY**  
 SCALE: 1" = 50'

DATE:	11/01/2024
PROJECT NO.:	212C-BF-00493
DESIGNED BY:	BC
DRAWN BY:	BC / JZ
CHECKED BY:	RD
SHEET:	1 OF 4
COPYRIGHT TETRA TECH INC.	
<b>FIGURE 7</b>	



**WETLAND IMPACT**

APPROX. MILEPOST	WETLAND I.D.	LATITUDE	LONGITUDE	MUNICIPALITY	TEMP. IMPACT (ACRES)			PERM. IMPACT (ACRES)			SUBFACILITY CODE
					PEM	PSS	PFO	PEM	PSS	PFO	
2.16	W06	41.976286	-77.67759	HARRISON	0.157	0.842	-	0.000	0.000	-	PIPE; TMPWI; WTDIM

**WATERBODY IMPACT**

MILEPOST	FEATURE I.D.	STREAM NAME	FLOW REGIME	BANK TO BANK WIDTH (FEET)	LATITUDE	LONGITUDE	STREAMS		FLOODWAYS		SUBFACILITY CODE
							TEMP. (AC.)	PERM. (AC.)	TEMP. (AC.)	PERM. (AC.)	
2.20	S12	NORTH BRANCH COWANESQUE RIV.	PERENNIAL	10	41.976395	-77.677322	0.038	0.000	0.493	0.000	PIPE; BRDG; FLACT
2.25	S13	NORTH BRANCH COWANESQUE RIV.	PERENNIAL	8	41.976543	-77.676957	0.015	0.000			PIPE; BRDG; FLACT



**TETRA TECH**

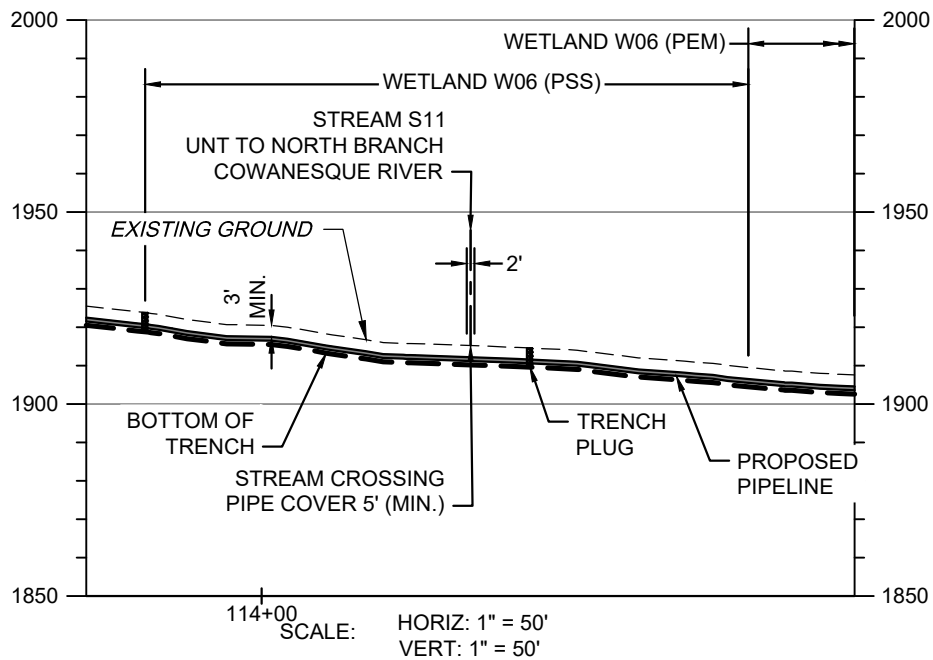
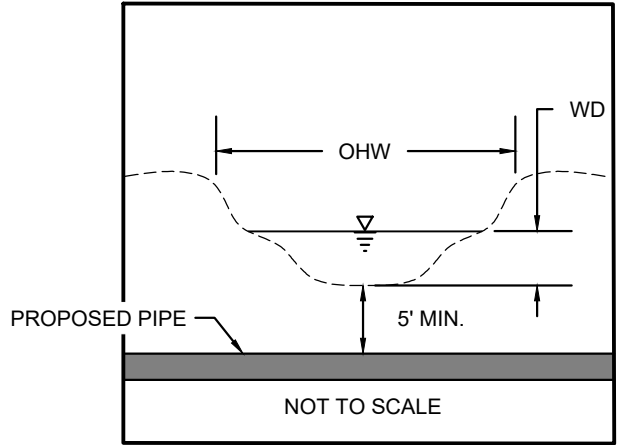
WWW.TETRATECH.COM

301 ELLICOTT STREET  
BUFFALO, NY 14203  
T: (716) 849-9419 | F: (716) 849-9420

NATIONAL FUEL GAS SUPPLY CORPORATION  
TIOGA PATHWAY PROJECT  
SITE SPECIFICS  
Z20 PIPELINE REPLACEMENT  
HARRISON TWP, POTTER COUNTY  
SCALE: 1" = 50'

DATE: 11/01/2024  
PROJECT NO.: 212C-BF-00493  
DESIGNED BY: BC  
DRAWN BY: BC / JZ  
CHECKED BY: RD  
SHEET: 2 OF 4  
COPYRIGHT TETRA TECH INC.  
**FIGURE 7.1**

S11 BANK TO BANK WIDTH (OHW) = 2'  
 S11 WATER DEPTH (WD) = 2"



**STREAM S11 - PIPELINE CROSSING PROFILE**

**NOTES:**

1. THE EXISTING AND PROPOSED CONTOURS WILL BE THE SAME. THE STREAM WILL BE RESTORED TO PRECONSTRUCTION CONDITIONS.
2. STREAMS WITH PERCEPTIBLE FLOW WILL BE CROSSED USING A DRY CONSTRUCTION METHOD. HOWEVER, STREAMS WITH NO FLOW AT TIME OF CONSTRUCTION WILL BE OPEN CUT.



**TETRA TECH**

WWW.TETRATECH.COM

301 ELLICOTT STREET  
 BUFFALO, NY 14203  
 T: (716) 849-9419 | F: (716) 849-9420

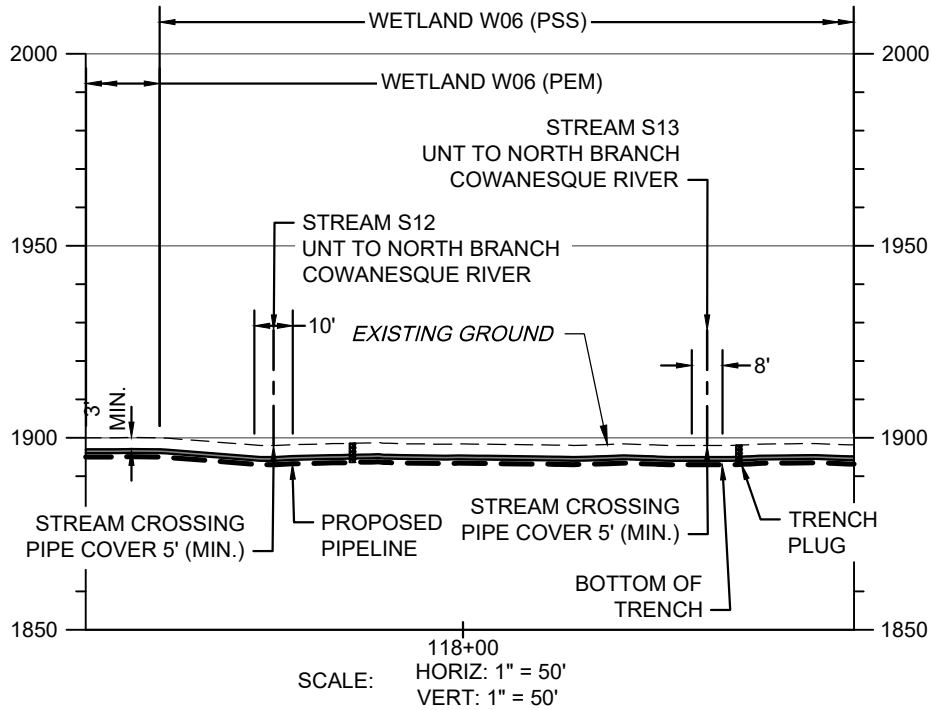
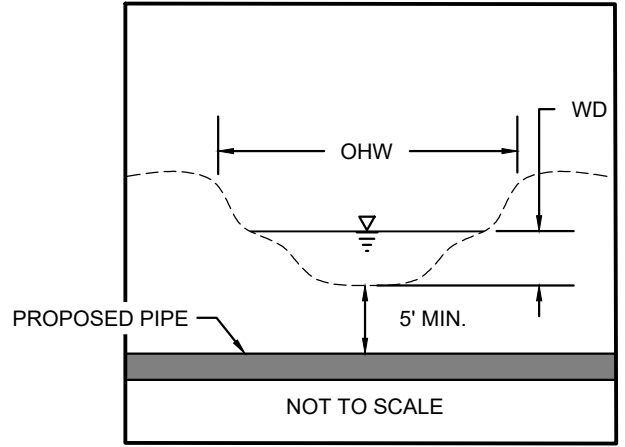
NATIONAL FUEL GAS SUPPLY CORPORATION  
 TIOGA PATHWAY PROJECT  
 SITE SPECIFICS  
 Z20 PIPELINE REPLACEMENT  
 HARRISON TWP, POTTER COUNTY  
 SCALE: AS NOTED

DATE:	11/01/2024
PROJECT NO.:	212C-BF-00493
DESIGNED BY:	BC
DRAWN BY:	BC / JZ
CHECKED BY:	RD
SHEET:	3 OF 4

COPYRIGHT TETRA TECH INC.

**FIGURE 7A**

S12 BANK TO BANK WIDTH (OHW) = 10'  
 S12 WATER DEPTH (WD) = 5"  
 S13 BANK TO BANK WIDTH (OHW) = 8'  
 S13 WATER DEPTH (WD) = 15"



**STREAM S12 & STREAM S13 - PIPELINE CROSSING PROFILE**

**NOTES:**

1. THE EXISTING AND PROPOSED CONTOURS WILL BE THE SAME. THE STREAM WILL BE RESTORED TO PRECONSTRUCTION CONDITIONS.
2. STREAMS WITH PERCEPTIBLE FLOW WILL BE CROSSED USING A DRY CONSTRUCTION METHOD. HOWEVER, STREAMS WITH NO FLOW AT TIME OF CONSTRUCTION WILL BE OPEN CUT.



**TETRA TECH**

WWW.TETRATECH.COM

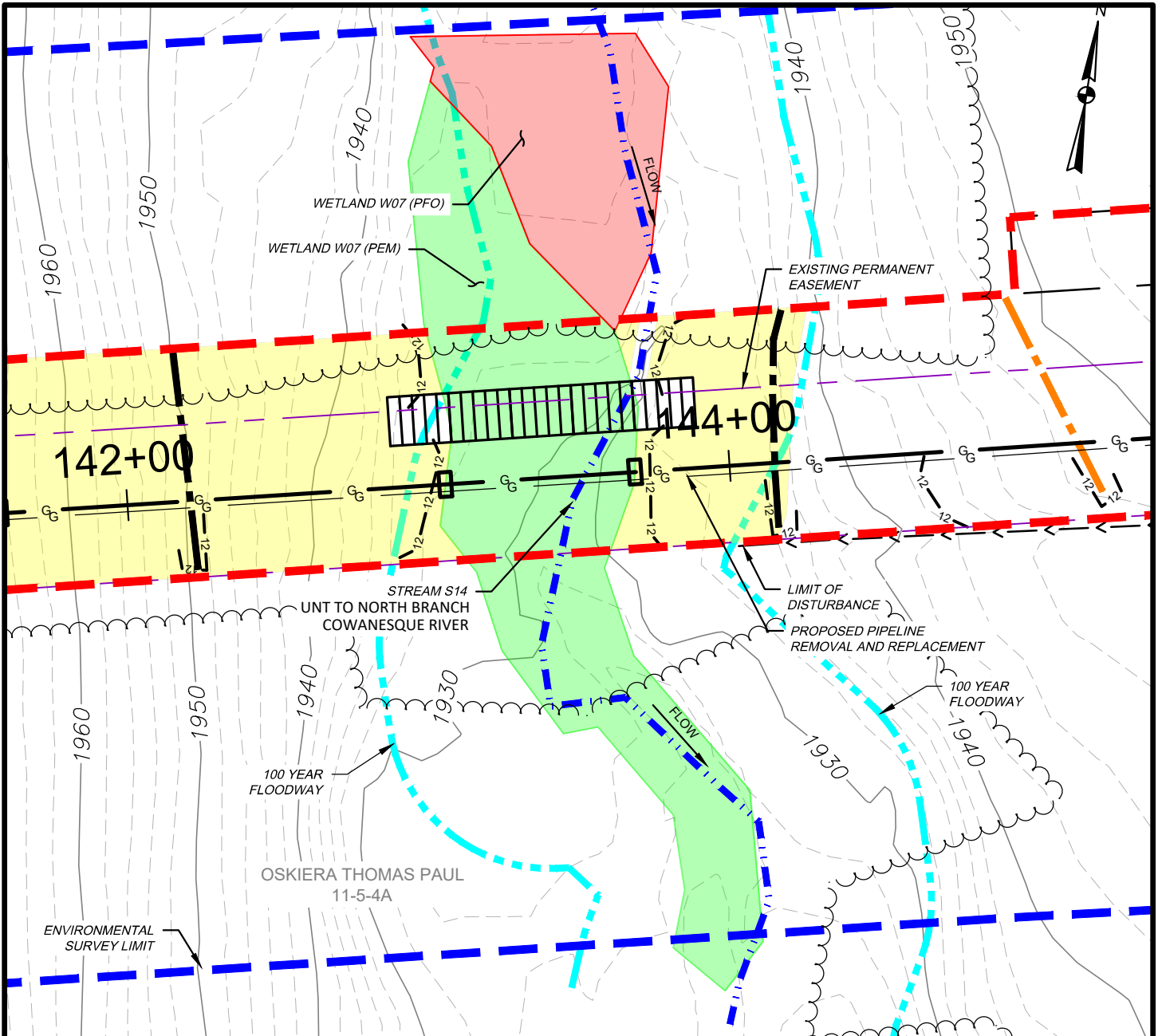
301 ELLICOTT STREET  
 BUFFALO, NY 14203  
 T: (716) 849-9419 | F: (716) 849-9420

NATIONAL FUEL GAS SUPPLY CORPORATION  
 TIOGA PATHWAY PROJECT  
 SITE SPECIFICS  
 Z20 PIPELINE REPLACEMENT  
 HARRISON TWP, POTTER COUNTY  
 SCALE: AS NOTED

DATE:	11/01/2024
PROJECT NO.:	212C-BF-00493
DESIGNED BY:	BC
DRAWN BY:	BC / JZ
CHECKED BY:	RD
SHEET:	4 OF 4

COPYRIGHT TETRA TECH INC.

**FIGURE 7B**



**WETLAND IMPACT**

APPROX. MILEPOST	WETLAND I.D.	LATITUDE	LONGITUDE	MUNICIPALITY	TEMP. IMPACT (ACRES)			PERM. IMPACT (ACRES)			SUBFACILITY CODE
					PEM	PSS	PFO	PEM	PSS	PFO	
2.72	W07	41.978328	-77.668284	HARRISON	0.103	-	0.0002	0.000	-	0.000	PIPE; TMPWI; WTDIM

**WATERBODY IMPACT**

MILEPOST	FEATURE I.D.	STREAM NAME	FLOW REGIME	BANK TO BANK WIDTH (FEET)	LATITUDE	LONGITUDE	STREAMS		FLOODWAYS		SUBFACILITY CODE
							TEMP. (AC.)	PERM. (AC.)	TEMP. (AC.)	PERM. (AC.)	
2.70	S14	UNT TO N. BRANCH COWANESQUE RIV.	PERENNIAL	6	41.978337	-77.668231	0.012	0.000	0.202	0.000	PIPE; BRDG; FLACT



**TETRA TECH**

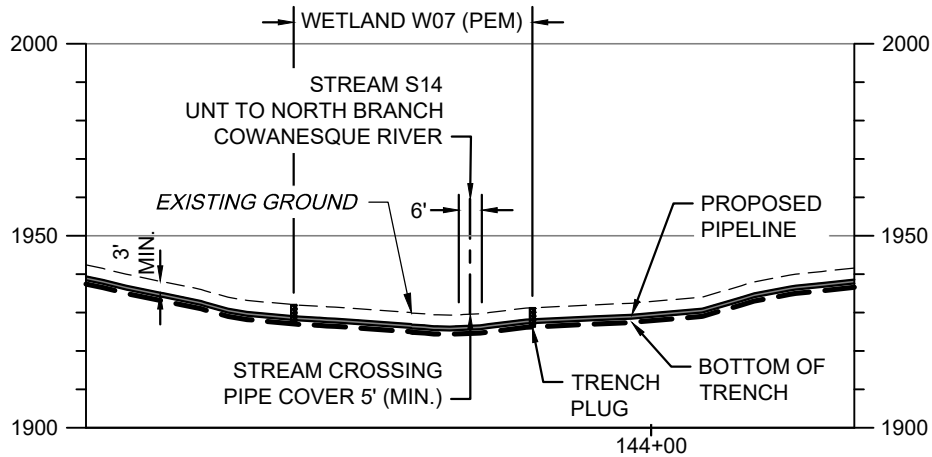
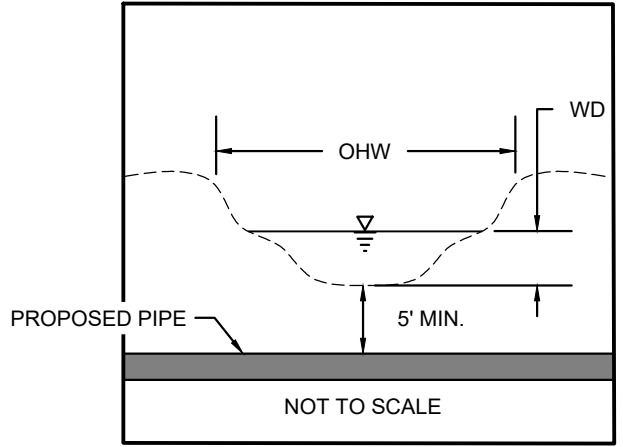
WWW.TETRATECH.COM

301 ELLICOTT STREET  
 BUFFALO, NY 14203  
 T: (716) 849-9419 | F: (716) 849-9420

**NATIONAL FUEL GAS SUPPLY CORPORATION**  
**TIOGA PATHWAY PROJECT**  
**SITE SPECIFICS**  
**Z20 PIPELINE REPLACEMENT**  
**HARRISON TWP, POTTER COUNTY**  
 SCALE: 1" = 50'

DATE:	11/01/2024
PROJECT NO.:	212C-BF-00493
DESIGNED BY:	BC
DRAWN BY:	BC / JZ
CHECKED BY:	RD
SHEET:	1 OF 2
COPYRIGHT TETRA TECH INC.	
<b>FIGURE 8</b>	

S14 BANK TO BANK WIDTH (OHW) = 6'  
 S14 WATER DEPTH (WD) = 4"



SCALE: HORIZ: 1" = 50'  
 VERT: 1" = 50'

**STREAM S14 - PIPELINE CROSSING PROFILE**

**NOTES:**

1. THE EXISTING AND PROPOSED CONTOURS WILL BE THE SAME. THE STREAM WILL BE RESTORED TO PRECONSTRUCTION CONDITIONS.
2. STREAMS WITH PERCEPTIBLE FLOW WILL BE CROSSED USING A DRY CONSTRUCTION METHOD. HOWEVER, STREAMS WITH NO FLOW AT TIME OF CONSTRUCTION WILL BE OPEN CUT.



**TETRA TECH**

WWW.TETRATECH.COM

301 ELLICOTT STREET  
 BUFFALO, NY 14203  
 T: (716) 849-9419 | F: (716) 849-9420

NATIONAL FUEL GAS SUPPLY CORPORATION  
 TIOGA PATHWAY PROJECT

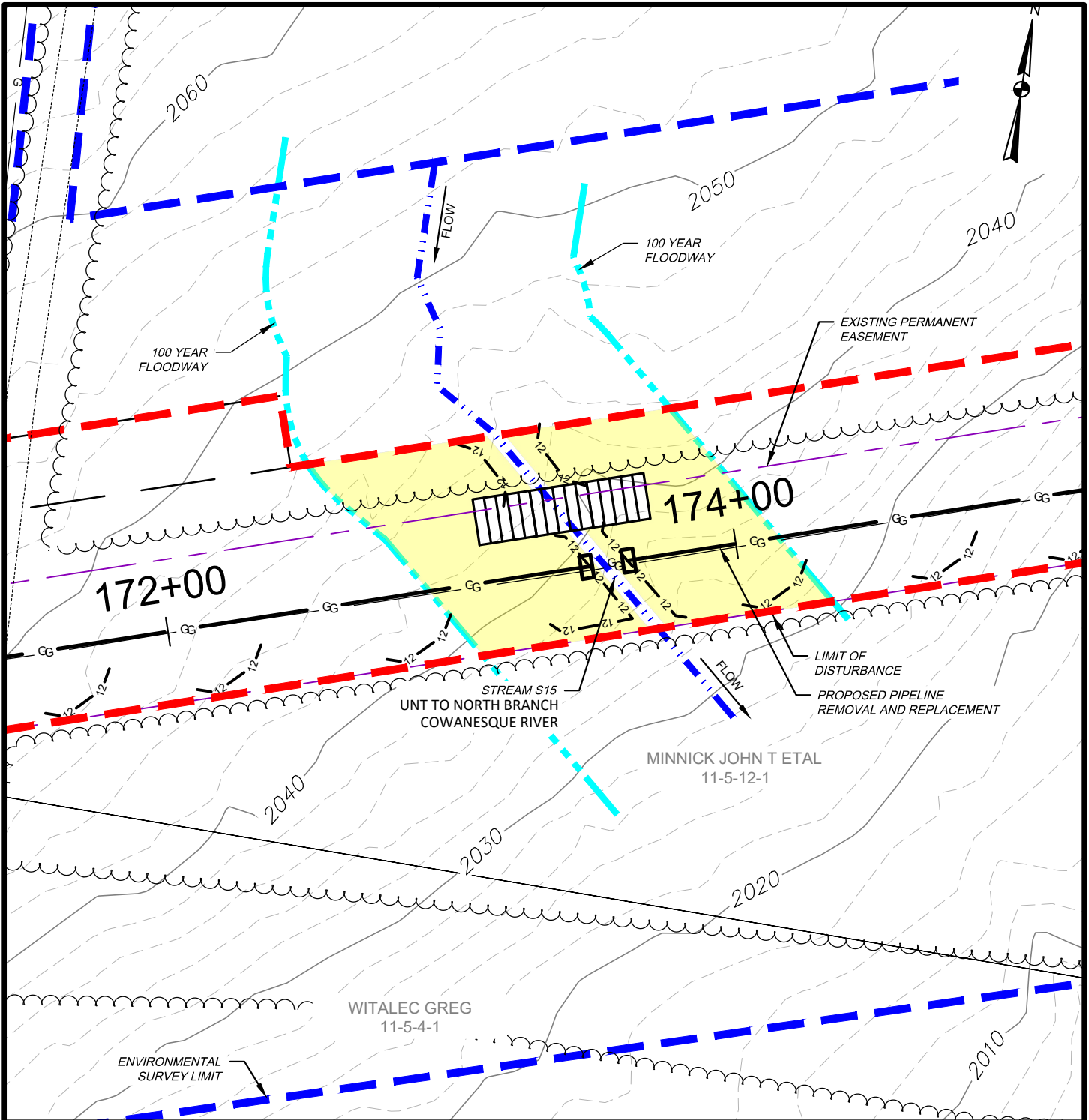
SITE SPECIFICS  
 Z20 PIPELINE REPLACEMENT  
 HARRISON TWP, POTTER COUNTY

SCALE: AS NOTED

DATE:	11/01/2024
PROJECT NO.:	212C-BF-00493
DESIGNED BY:	BC
DRAWN BY:	BC / JZ
CHECKED BY:	RD
SHEET:	2 OF 2

COPYRIGHT TETRA TECH INC.

**FIGURE 8A**



WATERBODY IMPACT

MILEPOST	FEATURE I.D.	STREAM NAME	FLOW REGIME	BANK TO BANK WIDTH (FEET)	LATITUDE	LONGITUDE	STREAMS		FLOODWAYS		SUBFACILITY CODE
							TEMP. (AC.)	PERM. (AC.)	TEMP. (AC.)	PERM. (AC.)	
3.30	S15	UNT TO N. BRANCH COWANESQUE RIV.	EPHEMERAL	5	41.98024	-77.657616	0.010	0.000	0.214	0.000	PIPE; BRDG; FLACT



**TETRA TECH**

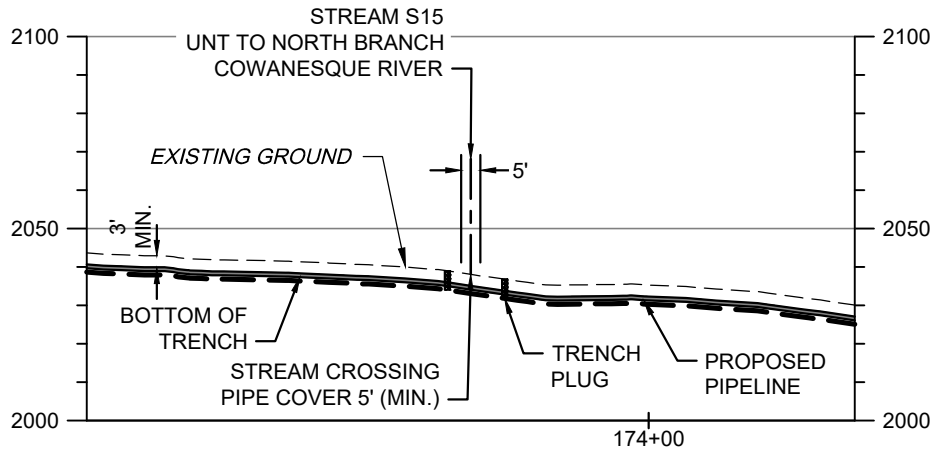
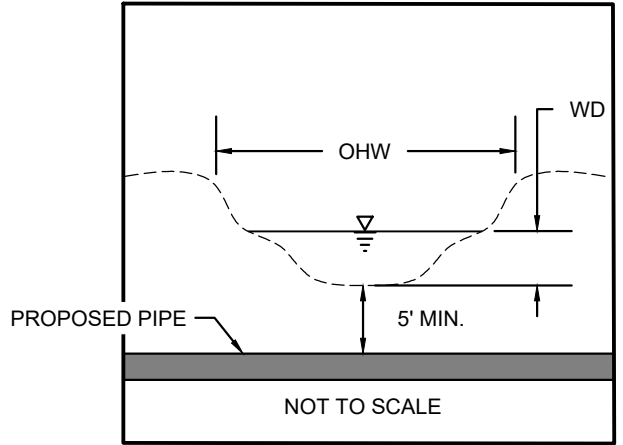
WWW.TETRATECH.COM

301 ELLICOTT STREET  
 BUFFALO, NY 14203  
 T: (716) 849-9419 | F: (716) 849-9420

NATIONAL FUEL GAS SUPPLY CORPORATION  
 TIOGA PATHWAY PROJECT  
 SITE SPECIFICS  
 Z20 PIPELINE REPLACEMENT  
 HARRISON TWP, POTTER COUNTY  
 SCALE: 1" = 50'

DATE:	11/01/2024
PROJECT NO.:	212C-BF-00493
DESIGNED BY:	BC
DRAWN BY:	BC / JZ
CHECKED BY:	RD
SHEET:	1 OF 2
COPYRIGHT TETRA TECH INC.	
<b>FIGURE 9</b>	

S15 BANK TO BANK WIDTH (OHW) = 5'  
 S15 WATER DEPTH (WD) = 0"



SCALE: HORIZ: 1" = 50'  
 VERT: 1" = 50'

**STREAM S15 - PIPELINE CROSSING PROFILE**

**NOTES:**

1. THE EXISTING AND PROPOSED CONTOURS WILL BE THE SAME. THE STREAM WILL BE RESTORED TO PRECONSTRUCTION CONDITIONS.
2. STREAMS WITH PERCEPTIBLE FLOW WILL BE CROSSED USING A DRY CONSTRUCTION METHOD. HOWEVER, STREAMS WITH NO FLOW AT TIME OF CONSTRUCTION WILL BE OPEN CUT.



**TETRA TECH**

WWW.TETRATECH.COM

301 ELLICOTT STREET  
 BUFFALO, NY 14203  
 T: (716) 849-9419 | F: (716) 849-9420

NATIONAL FUEL GAS SUPPLY CORPORATION  
 TIOGA PATHWAY PROJECT

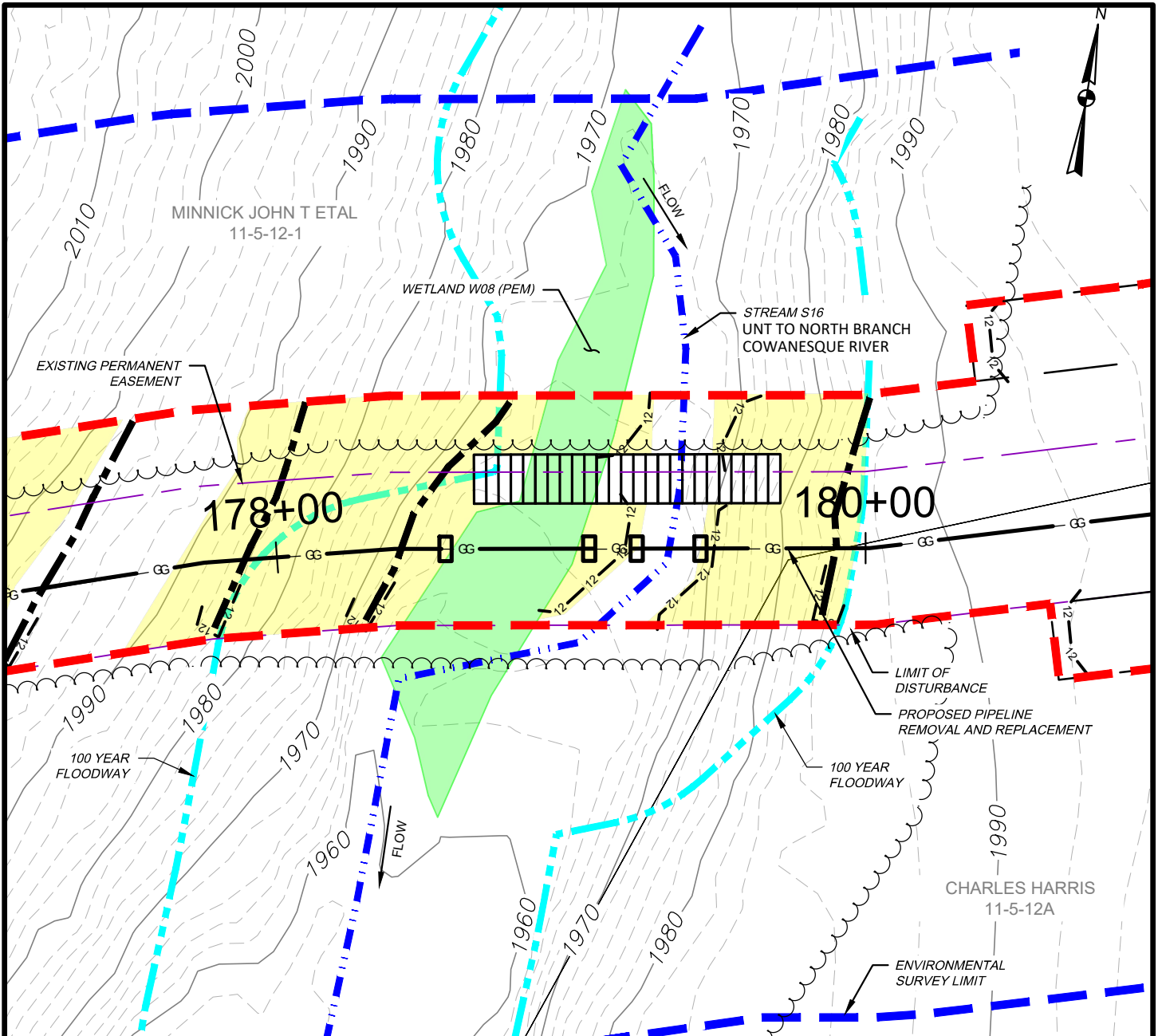
SITE SPECIFICS  
 Z20 PIPELINE REPLACEMENT  
 HARRISON TWP, POTTER COUNTY

SCALE: AS NOTED

DATE:	11/01/2024
PROJECT NO.:	212C-BF-00493
DESIGNED BY:	BC
DRAWN BY:	BC / JZ
CHECKED BY:	RD
SHEET:	2 OF 2

COPYRIGHT TETRA TECH INC.

**FIGURE 9A**



WETLAND IMPACT

APPROX. MILEPOST	WETLAND I.D.	LATITUDE	LONGITUDE	MUNICIPALITY	TEMP. IMPACT (ACRES)			PERM. IMPACT (ACRES)			SUBFACILITY CODE
					PEM	PSS	PFO	PEM	PSS	PFO	
3.38	W08	41.980661	-77.655791	HARRISON	0.057	-	-	0.000	-	-	PIPE; TMPWI; WTDIM

WATERBODY IMPACT

MILEPOST	FEATURE I.D.	STREAM NAME	FLOW REGIME	BANK TO BANK WIDTH (FEET)	LATITUDE	LONGITUDE	STREAMS		FLOODWAYS		SUBFACILITY CODE
							TEMP. (AC.)	PERM. (AC.)	TEMP. (AC.)	PERM. (AC.)	
3.40	S16	UNT TO N. BRANCH COWANESQUE RIV.	PERENNIAL	20	41.980684	-77.655608	0.039	0.000	0.282	0.000	PIPE; BRDG; FLACT



**TETRA TECH**

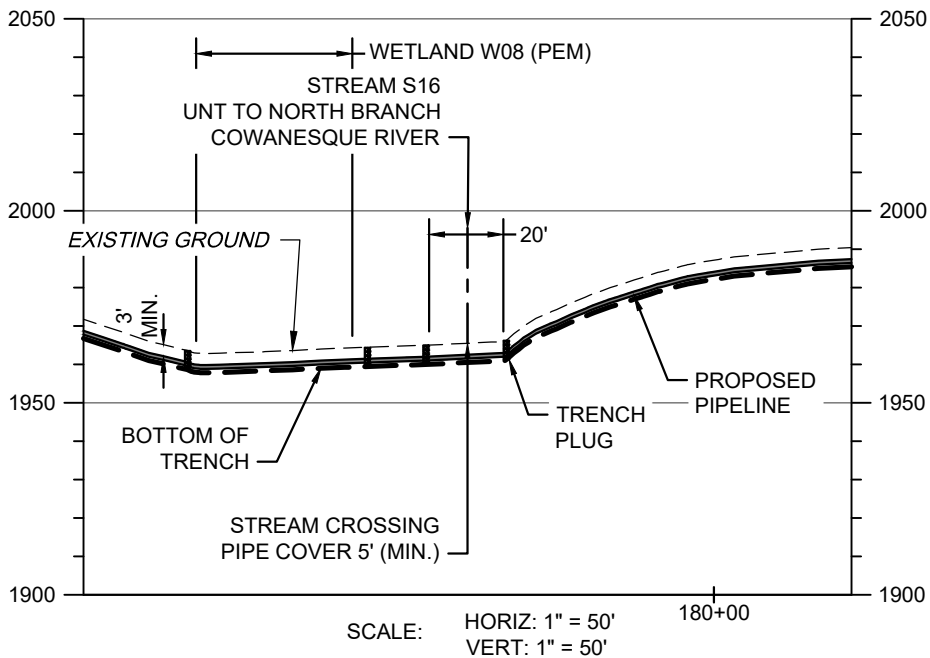
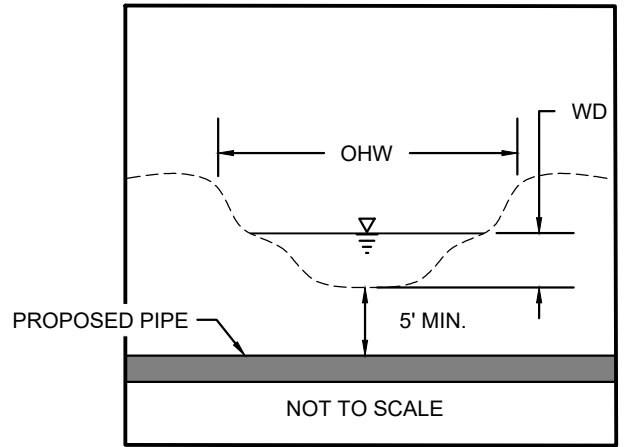
WWW.TETRATECH.COM

301 ELLICOTT STREET  
BUFFALO, NY 14203  
T: (716) 849-9419 | F: (716) 849-9420

NATIONAL FUEL GAS SUPPLY CORPORATION  
TIOGA PATHWAY PROJECT  
SITE SPECIFICS  
Z20 PIPELINE REPLACEMENT  
HARRISON TWP, POTTER COUNTY  
SCALE: 1" = 50'

DATE: 11/01/2024  
PROJECT NO.: 212C-BF-00493  
DESIGNED BY: BC  
DRAWN BY: BC / JZ  
CHECKED BY: RD  
SHEET: 1 OF 2  
COPYRIGHT TETRA TECH INC.  
**FIGURE 10**

S16 BANK TO BANK WIDTH (OHW) = 20'  
 S16 WATER DEPTH (WD) = 2'



**STREAM S16 - PIPELINE CROSSING PROFILE**

**NOTES:**

1. THE EXISTING AND PROPOSED CONTOURS WILL BE THE SAME. THE STREAM WILL BE RESTORED TO PRECONSTRUCTION CONDITIONS.
2. STREAMS WITH PERCEPTIBLE FLOW WILL BE CROSSED USING A DRY CONSTRUCTION METHOD. HOWEVER, STREAMS WITH NO FLOW AT TIME OF CONSTRUCTION WILL BE OPEN CUT.



**TETRA TECH**

WWW.TETRATECH.COM

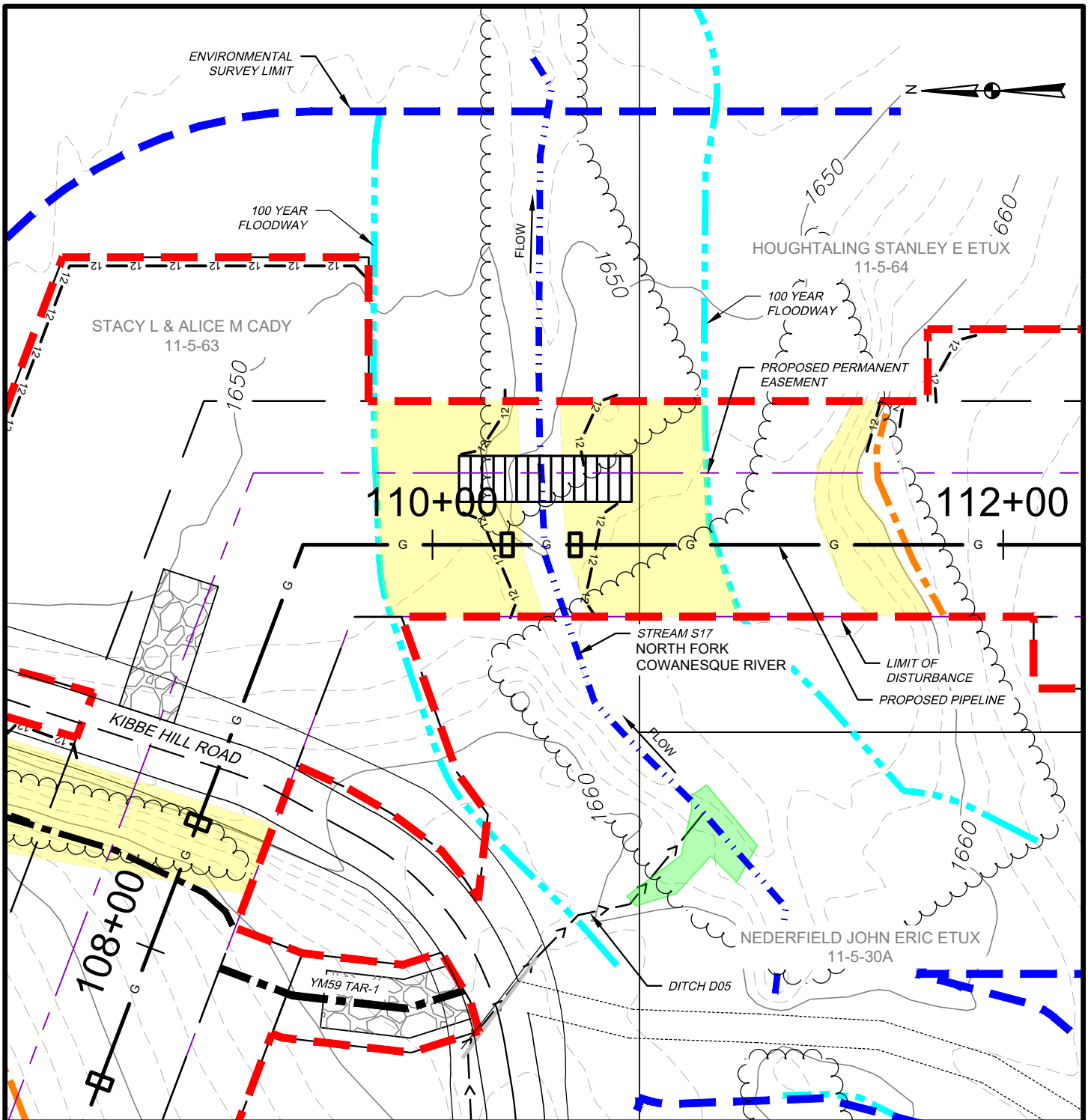
301 ELLICOTT STREET  
 BUFFALO, NY 14203  
 T: (716) 849-9419 | F: (716) 849-9420

NATIONAL FUEL GAS SUPPLY CORPORATION  
 TIOGA PATHWAY PROJECT  
 SITE SPECIFICS  
 Z20 PIPELINE REPLACEMENT  
 HARRISON TWP, POTTER COUNTY  
 SCALE: AS NOTED

DATE:	11/01/2024
PROJECT NO.:	212C-BF-00493
DESIGNED BY:	BC
DRAWN BY:	BC / JZ
CHECKED BY:	RD
SHEET:	2 OF 2

COPYRIGHT TETRA TECH INC.

**FIGURE 10A**



WATERBODY IMPACT

MILEPOST	FEATURE I.D.	STREAM NAME	FLOW REGIME	BANK TO BANK WIDTH (FEET)	LATITUDE	LONGITUDE	STREAMS		FLOODWAYS		SUBFACILITY CODE
							TEMP. (AC.)	PERM. (AC.)	TEMP. (AC.)	PERM. (AC.)	
2.10	S17	NORTH FORK COWANESQUE RIV.	PERENNIAL	15	41.967015	-77.61861	0.024	0.003	0.181	0.027	PIPE; BRDG; FLACT



**TETRA TECH**

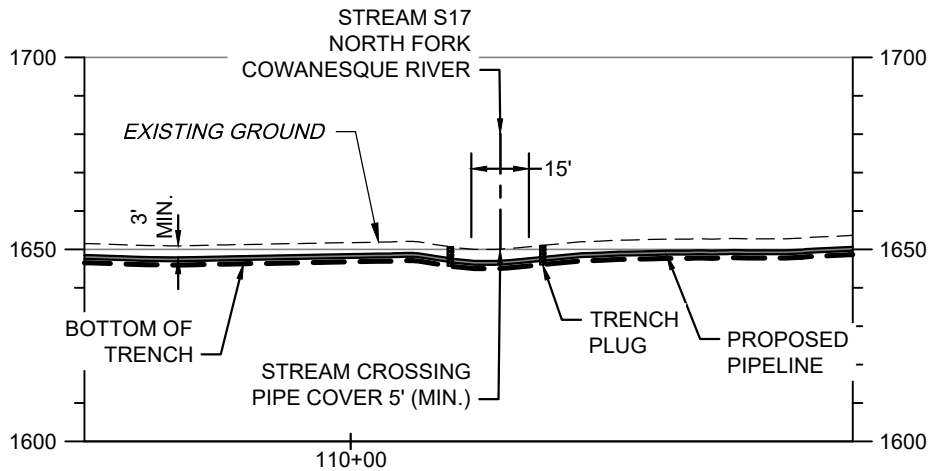
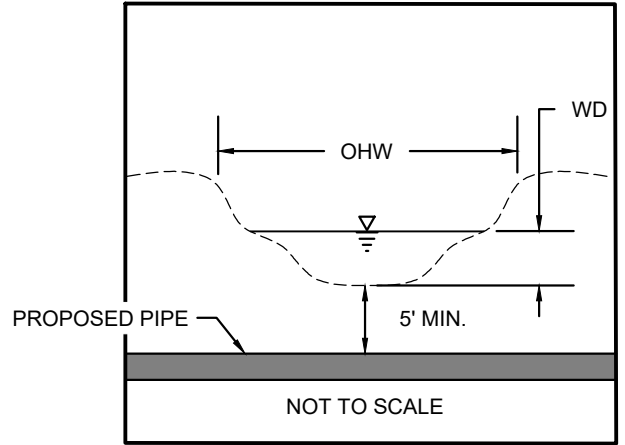
WWW.TETRATECH.COM

301 ELLICOTT STREET  
 BUFFALO, NY 14203  
 T: (716) 849-9419 | F: (716) 849-9420

NATIONAL FUEL GAS SUPPLY CORPORATION  
 TIOGA PATHWAY PROJECT  
 SITE SPECIFICS  
 MAINLINE PIPELINE (YM59)  
 HARRISON TWP, POTTER COUNTY  
 SCALE: 1" = 50'

DATE:	11/01/2024
PROJECT NO.:	212C-BF-00493
DESIGNED BY:	BC
DRAWN BY:	BC / JZ
CHECKED BY:	RD
SHEET:	1 OF 2
COPYRIGHT TETRA TECH INC.	
<b>FIGURE 11</b>	

S17 BANK TO BANK WIDTH (OHW) = 15'  
 S17 WATER DEPTH (WD) = 3"



SCALE: HORIZ: 1" = 50'  
 VERT: 1" = 50'

**STREAM S17 - PIPELINE CROSSING PROFILE**

**NOTES:**

1. THE EXISTING AND PROPOSED CONTOURS WILL BE THE SAME. THE STREAM WILL BE RESTORED TO PRECONSTRUCTION CONDITIONS.
2. STREAMS WITH PERCEPTIBLE FLOW WILL BE CROSSED USING A DRY CONSTRUCTION METHOD. HOWEVER, STREAMS WITH NO FLOW AT TIME OF CONSTRUCTION WILL BE OPEN CUT.



**TETRA TECH**

WWW.TETRATECH.COM

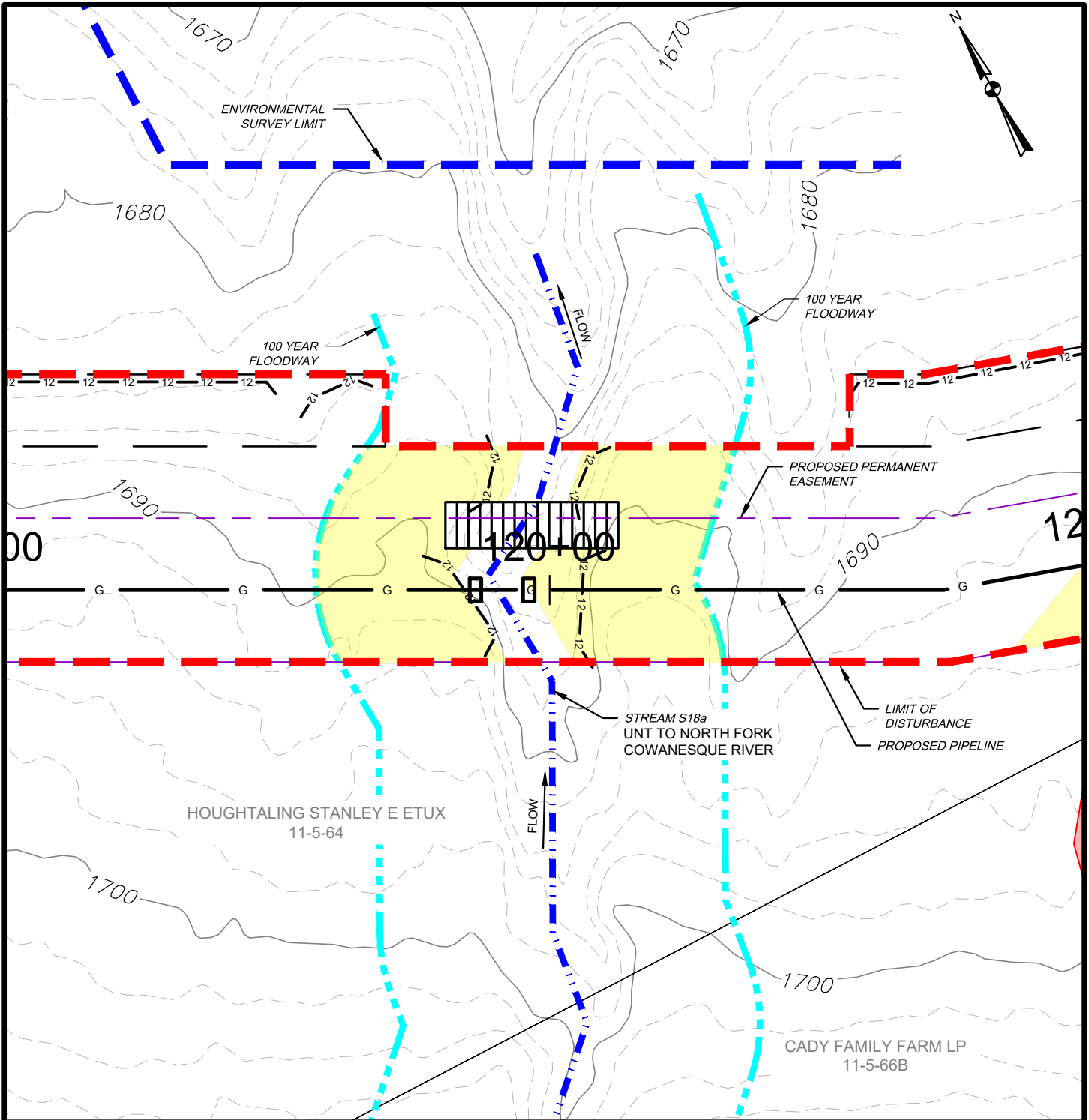
301 ELLICOTT STREET  
 BUFFALO, NY 14203  
 T: (716) 849-9419 | F: (716) 849-9420

NATIONAL FUEL GAS SUPPLY CORPORATION  
 TIOGA PATHWAY PROJECT  
 SITE SPECIFICS  
 MAINLINE PIPELINE (YM59)  
 HARRISON TWP, POTTER COUNTY  
 SCALE: AS NOTED

DATE:	11/01/2024
PROJECT NO.:	212C-BF-00493
DESIGNED BY:	BC
DRAWN BY:	BC / JZ
CHECKED BY:	RD
SHEET:	2 OF 2

COPYRIGHT TETRA TECH INC.

**FIGURE 11A**



WATERBODY IMPACT

MILEPOST	FEATURE I.D.	STREAM NAME	FLOW REGIME	BANK TO BANK WIDTH (FEET)	LATITUDE	LONGITUDE	STREAMS		FLOODWAYS		SUBFACILITY CODE
							TEMP. (AC.)	PERM. (AC.)	TEMP. (AC.)	PERM. (AC.)	
2.27	S18a	UNT TO N. FORK COWANESQUE RIV.	PERENNIAL	20	41.96481	-77.6179	0.034	0.005	0.201	0.030	PIPE; BRDG; FLACT



**TETRA TECH**

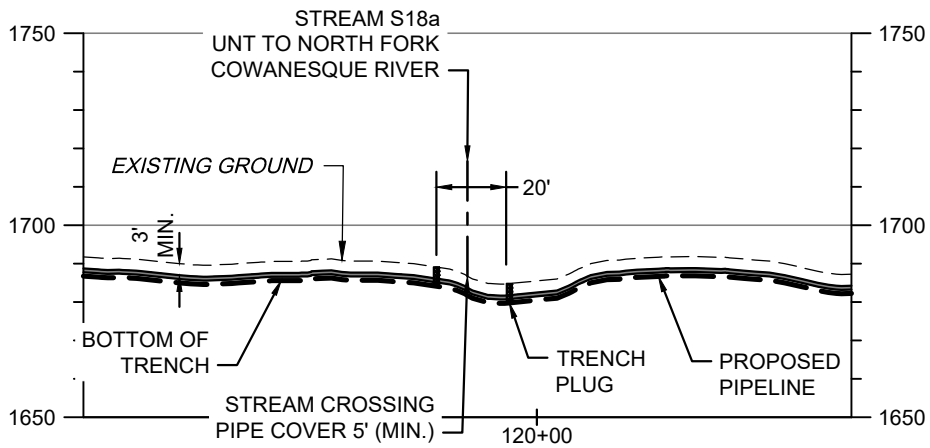
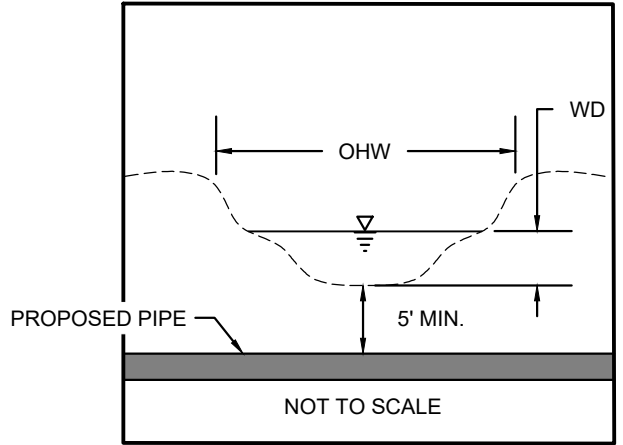
WWW.TETRATECH.COM

301 ELLICOTT STREET  
BUFFALO, NY 14203  
T: (716) 849-9419 | F: (716) 849-9420

NATIONAL FUEL GAS SUPPLY CORPORATION  
TIOGA PATHWAY PROJECT  
SITE SPECIFICS  
MAINLINE PIPELINE (YM59)  
HARRISON TWP, POTTER COUNTY  
SCALE: 1" = 50'

DATE:	11/01/2024
PROJECT NO.:	212C-BF-00493
DESIGNED BY:	BC
DRAWN BY:	BC / JZ
CHECKED BY:	RD
SHEET:	1 OF 2
COPYRIGHT TETRA TECH INC.	
<b>FIGURE 12</b>	

S18a BANK TO BANK WIDTH (OHW) = 20'  
 S18a WATER DEPTH (WD) = 2'



SCALE: HORIZ: 1" = 50'  
 VERT: 1" = 50'

**STREAM S18a - PIPELINE CROSSING PROFILE**

**NOTES:**

1. THE EXISTING AND PROPOSED CONTOURS WILL BE THE SAME. THE STREAM WILL BE RESTORED TO PRECONSTRUCTION CONDITIONS.
2. STREAMS WITH PERCEPTIBLE FLOW WILL BE CROSSED USING A DRY CONSTRUCTION METHOD. HOWEVER, STREAMS WITH NO FLOW AT TIME OF CONSTRUCTION WILL BE OPEN CUT.



**TETRA TECH**

WWW.TETRATECH.COM

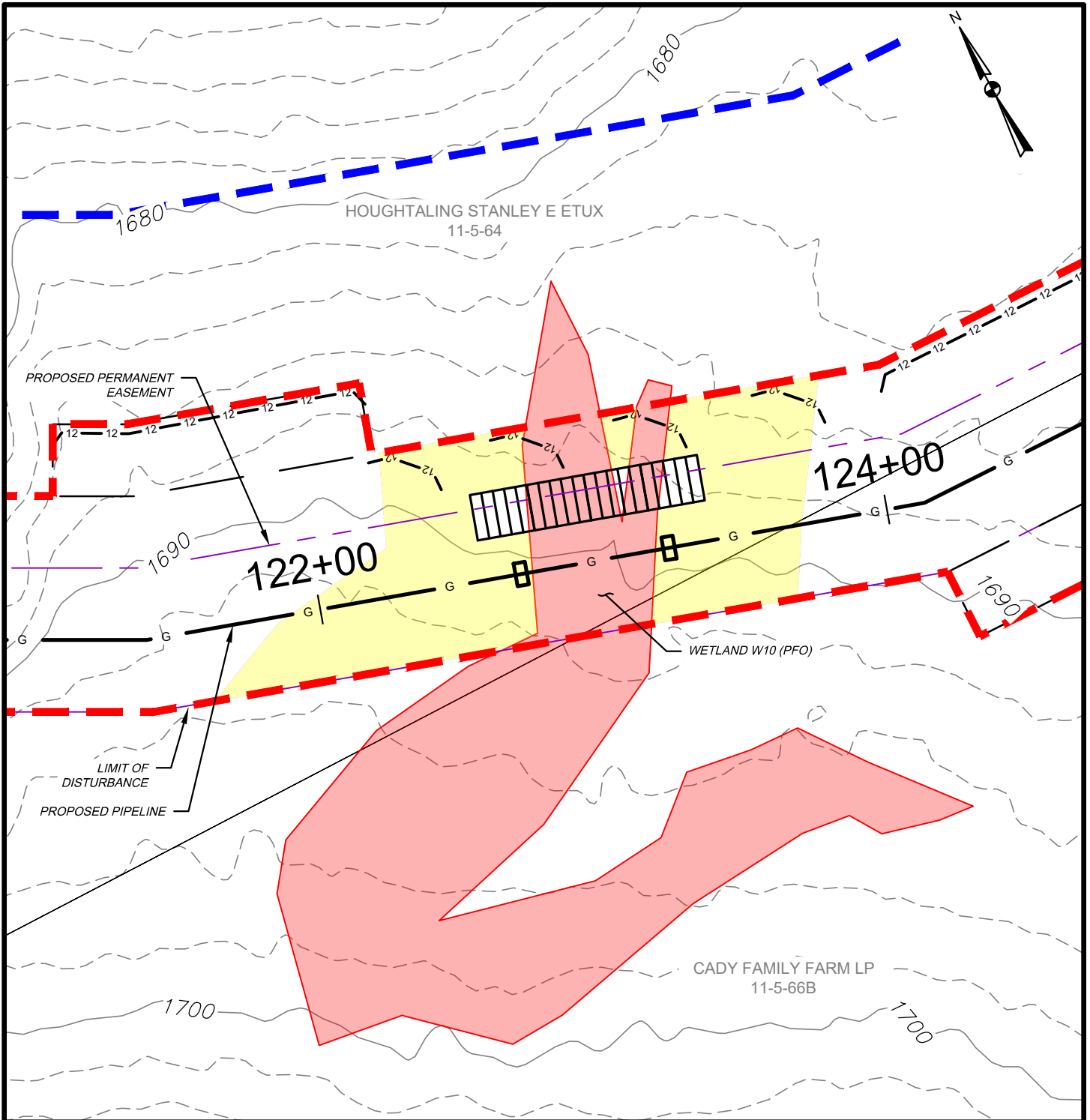
301 ELLICOTT STREET  
 BUFFALO, NY 14203  
 T: (716) 849-9419 | F: (716) 849-9420

NATIONAL FUEL GAS SUPPLY CORPORATION  
 TIOGA PATHWAY PROJECT  
 SITE SPECIFICS  
 MAINLINE PIPELINE (YM59)  
 HARRISON TWP, POTTER COUNTY  
 SCALE: AS NOTED

DATE:	11/01/2024
PROJECT NO.:	212C-BF-00493
DESIGNED BY:	BC
DRAWN BY:	BC / JZ
CHECKED BY:	RD
SHEET:	2 OF 2

COPYRIGHT TETRA TECH INC.

**FIGURE 12A**



WETLAND IMPACT

APPROX. MILEPOST	WETLAND I.D.	LATITUDE	LONGITUDE	MUNICIPALITY	TEMP. IMPACT (ACRES)			PERM. IMPACT (ACRES)			SUBFACILITY CODE
					PEM	PSS	PFO	PEM	PSS	PFO	
2.35	W10	41.964401	-77.616983	HARRISON	-	-	0.044	-	-	0.030	PIPE; TMPWI; WTDIM



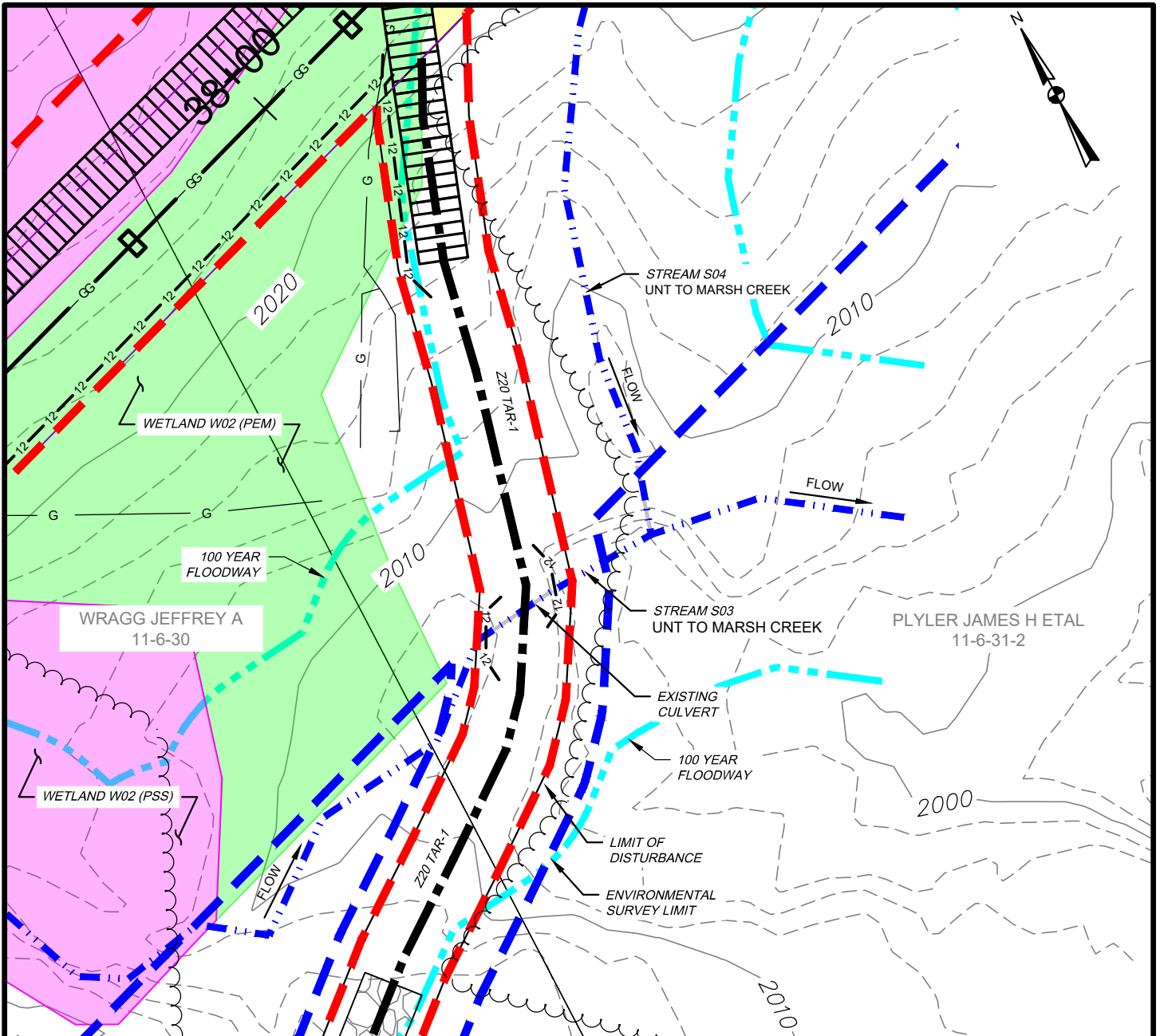
**TETRA TECH**

WWW.TETRATECH.COM

301 ELLICOTT STREET  
BUFFALO, NY 14203  
T: (716) 849-9419 | F: (716) 849-9420

NATIONAL FUEL GAS SUPPLY CORPORATION  
TIOGA PATHWAY PROJECT  
SITE SPECIFICS  
MAINLINE PIPELINE (YM59)  
HARRISON TWP, POTTER COUNTY  
SCALE: 1" = 50'

DATE: 11/01/2024  
PROJECT NO.: 212C-BF-00493  
DESIGNED BY: BC  
DRAWN BY: JZ  
CHECKED BY: RD  
SHEET: 1 OF 1  
COPYRIGHT TETRA TECH INC.  
**FIGURE 13**



**WETLAND IMPACT**

APPROX. MILEPOST	WETLAND I.D.	LATITUDE	LONGITUDE	MUNICIPALITY	TEMP. IMPACT (ACRES)			PERM. IMPACT (ACRES)			SUBFACILITY CODE
					PEM	PSS	PFO	PEM	PSS	PFO	
Z20 TAR-1	W02	41.968985	-77.705062	HARRISON	0.013	-	-	0.000	-	-	TMPWI

**WATERBODY IMPACT**

MILEPOST	FEATURE I.D.	STREAM NAME	FLOW REGIME	BANK TO BANK WIDTH (FEET)	LATITUDE	LONGITUDE	STREAMS		FLOODWAYS		SUBFACILITY CODE
							TEMP. (AC.)	PERM. (AC.)	TEMP. (AC.)	PERM. (AC.)	
TAR 1	S03	UNT TO MARSH CREEK	PERENNIAL	8	41.968623	-77.704686	0.007	0.000	0.220	0.000	CULV



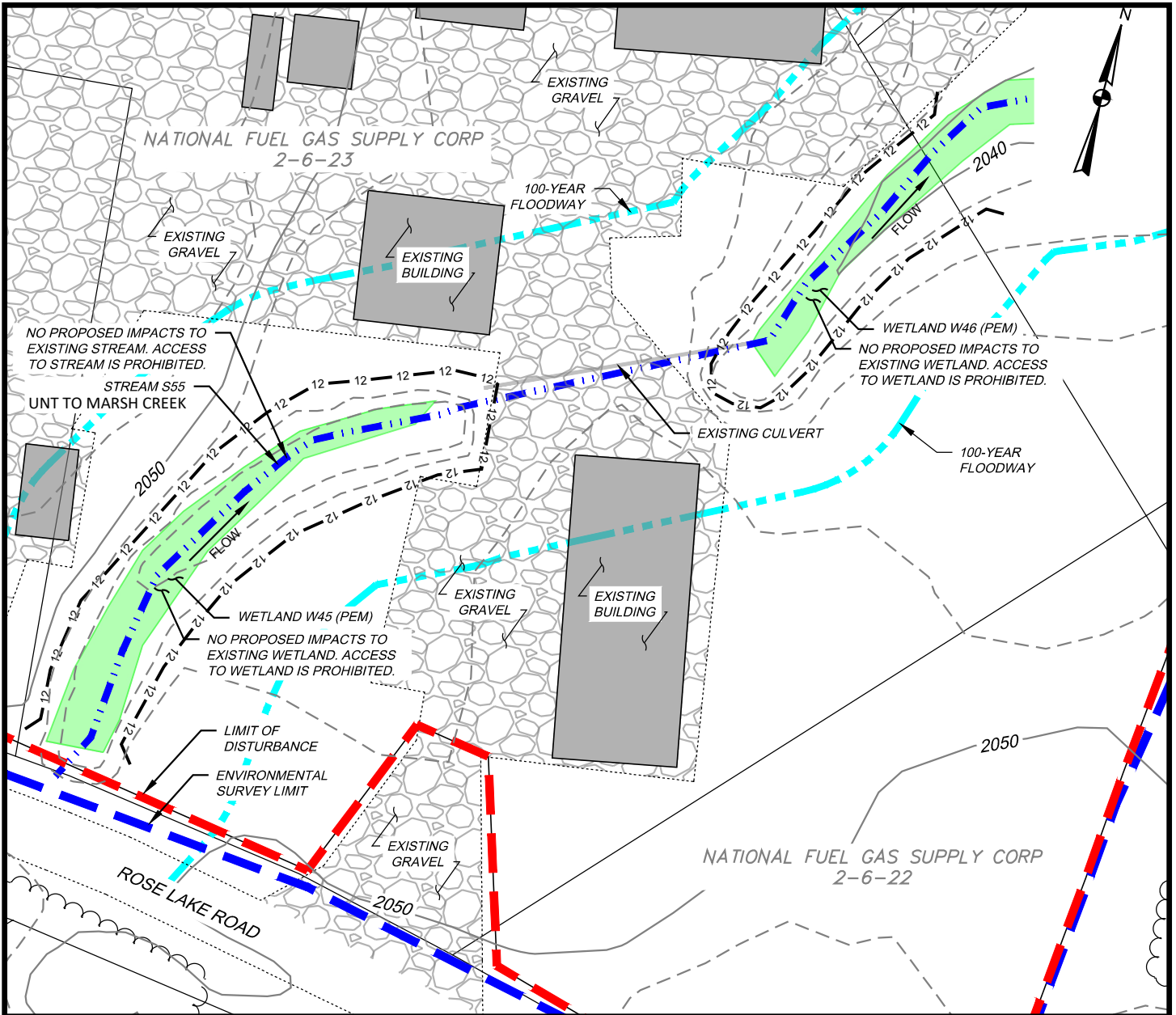
**TETRA TECH**

WWW.TETRATECH.COM

301 ELLICOTT STREET  
BUFFALO, NY 14203  
T: (716) 849-9419 | F: (716) 849-9420

**NATIONAL FUEL GAS SUPPLY CORPORATION**  
**TIOGA PATHWAY PROJECT**  
**SITE SPECIFICS**  
**ACCESS ROADS (Z20 PIPELINE)**  
**HARRISON TWP, POTTER COUNTY**  
 SCALE: 1" = 50'

DATE:	11/01/2024
PROJECT NO.:	212C-BF-00493
DESIGNED BY:	BC
DRAWN BY:	BC / JZ
CHECKED BY:	RD
SHEET:	1 OF 1
COPYRIGHT TETRA TECH INC.	
<b>FIGURE 14</b>	



**WETLAND IMPACT**

APPROX. MILEPOST	WETLAND I.D.	LATITUDE	LONGITUDE	MUNICIPALITY	TEMP. IMPACT (ACRES)			PERM. IMPACT (ACRES)			SUBFACILITY CODE
					PEM	PSS	PFO	PEM	PSS	PFO	
ELLISBURG CS	W45	41.899303	-77.914484	ALLEGANY	0.000	-	-	0.000	-	-	RESOURCES WILL BE AVOIDED - NO IMPACTS
ELLISBURG CS	W46	41.89984	-77.913537	ALLEGANY	0.000	-	-	0.000	-	-	RESOURCES WILL BE AVOIDED - NO IMPACTS

**WATERBODY IMPACT**

MILEPOST	FEATURE I.D.	STREAM NAME	FLOW REGIME	BANK TO BANK WIDTH (FEET)	LATITUDE	LONGITUDE	STREAMS		FLOODWAYS		SUBFACILITY CODE
							TEMP. (AC.)	PERM. (AC.)	TEMP. (AC.)	PERM. (AC.)	
ELLISBURG CS	S55	ROSE LAKE RUN	PERENNIAL	9	41.899581	-77.913991	0.000	0.000	0.000	0.000	EXISTING CULVERT AND ROAD



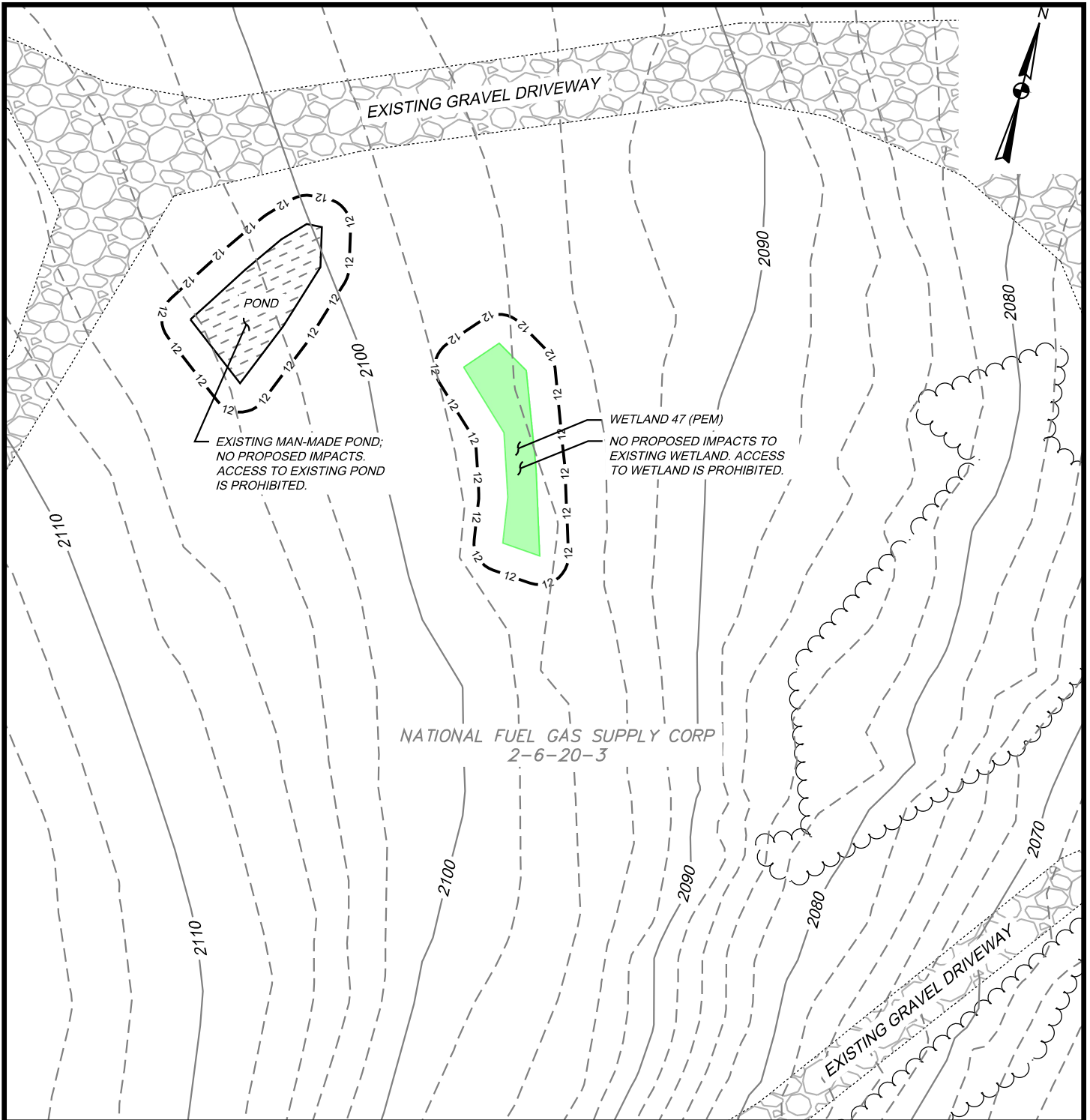
**TETRA TECH**

WWW.TETRATECH.COM

301 ELLICOTT STREET  
BUFFALO, NY 14203  
T: (716) 849-9419 | F: (716) 849-9420

NATIONAL FUEL GAS SUPPLY CORPORATION  
TIOGA PATHWAY PROJECT  
SITE SPECIFICS  
ABOVEGROUND FACILITIES  
ALLEGANY TWP, POTTER COUNTY  
SCALE: 1" = 50'

DATE:	11/01/2024
PROJECT NO.:	212C-BF-00493
DESIGNED BY:	BC
DRAWN BY:	BC / JZ
CHECKED BY:	RD
SHEET:	1 OF 1
COPYRIGHT TETRA TECH INC.	
<b>FIGURE E-1</b>	



**WETLAND IMPACT**

APPROX. MILEPOST	WETLAND I.D.	LATITUDE	LONGITUDE	MUNICIPALITY	TEMP. IMPACT (ACRES)			PERM. IMPACT (ACRES)			SUBFACILITY CODE
					PEM	PSS	PFO	PEM	PSS	PFO	
ELLISBURG CS	W47	41.902289	-77.914483	ALLEGANY	0.000	-	-	0.000	-	-	RESOURCES WILL BE AVOIDED - NO IMPACTS



**TETRA TECH**

WWW.TETRATECH.COM

301 ELLICOTT STREET  
BUFFALO, NY 14203  
T: (716) 849-9419 | F: (716) 849-9420

**NATIONAL FUEL GAS SUPPLY CORPORATION**  
**TIOGA PATHWAY PROJECT**  
**SITE SPECIFICS**  
**ABOVEGROUND FACILITIES**  
**ALLEGANY TWP, POTTER COUNTY**  
 SCALE: 1" = 50'

DATE:	11/01/2024
PROJECT NO.:	212C-BF-00493
DESIGNED BY:	BC
DRAWN BY:	BC / JZ
CHECKED BY:	RD
SHEET:	1 OF 1
COPYRIGHT TETRA TECH INC.	
<b>FIGURE E-2</b>	