



## **State Water Plan Update Great Lakes Regional Committee Meeting**

**October 23, 2024**

9:00 a.m. – 11:00 a.m.

Virtual Microsoft Teams Meeting

### **Committee Members in Attendance:**

Tim Bruno  
Tony Foyle  
Tom McClure  
Deborah Phillips  
James Polidori  
Tim Wachter  
Dennis Whitney  
Matt Welford

### **Others in Attendance:**

James Horton – DEP      Bob Whitmore - Strategic Consulting Partners  
Dave Jostenski – DEP      Jenny Gallagher Blom – Strategic Consulting Partners

### **Visitors:**

None

### **Welcome**

James Horton, DEP, welcomed everyone to the meeting, explained the meeting was being recorded, and provided helpful hints on the use of technology. Interim Chair Tim Wachter invited all attendees to introduce themselves.

### **Chair**

Tim Wachter volunteered to be Interim Chair for the meeting.

### **Meeting Summary**

The summary of the April 24, 2024, meeting was reviewed by the committee members. No official action was taken with a lack of a quorum of members.

### **Public Comment**

Interim Chair Wachter opened the meeting for public comment. An opportunity to express comments verbally or in the chat box was offered. There was no public comment.

### **By-Laws**

James (DEP staff) reviewed Article XII of the Great Lakes Committee By-Laws. The current by-laws state the following about amending the by-laws: “the By-Laws may be amended at any meeting of the Regional Committee by two-thirds vote of the full Regional Committee membership (15 voting members).” James said internal review of the by-laws by legal counsel is asking this article to be corrected to state:

“The By-Laws may be amended at any meeting of the Regional Committee by a simple majority vote of the full Regional Committee membership provided that written notice of such change has been sent via certified mail with a return receipt to each member at least two weeks prior to the meeting.”

This change will align the by-laws with Act 220. The legal opinion is this is a change to comply with the Act and does not need to be voted on by the committee as a by-law change.

The Committee agreed to confirm the By-Laws correction to comply with Act 220.

### **DEP Update**

James Horton, DEP, provided an overview presentation of the state water planning process and the direction forward.

### **DEP Team**

- Sue Weaver Environmental Program Manager, Interstate Water Resources Management
- James Horton – Environmental Group Manager, Water Use and Planning Section
- David Jostenski – Water Program Specialist

### **Regional Committee Objectives**

2025 – Draft regional content  
2026 Q1 – Combined Public Hearing and Meeting  
2026 Q3 – Send to Statewide Committee for Approval  
2027 – Next update to the State Water Plan

### **Five Year Plan**

2023 – Outreach/Recruitment/Review  
2024 – Implementation and Analysis  
2025 – Workgroups and drafting content  
2026 – Editing/Compiling public content

## **Outreach**

Upcoming tools:

Clearing house webpage with key plan details, partner links, and example projects.

## **Analysis**

- IWRM work group planning.

## **CARPS**

- Back Creek, Ohio Region – In review phase with DEP.
- Laurel Hill Creek CARP, Ohio Region – In review phase with DEP.
- Marsh and Rock Creeks' CARP, Potomac Region – In review phase with DEP.

## **Committee Health**

Proposed committee members for all regional committees are currently in the review and approval process.

## **Roles to Fill in Great Lakes Regional Committee**

- CCD Director – 2 positions
- County Planner – 2 positions
- Public Wastewater
- Industrial, Commercial, Energy Development and Production
- Environmental Conservation – 2 positions
- Water Resources Management Professional
- Local Government – 3 positions

## **New Members Added to Great Lakes Committee**

- James Polidori – Great Lakes Commission
- Michael Martino – Superior Energy Resources

## **Recruiting New Members Process**





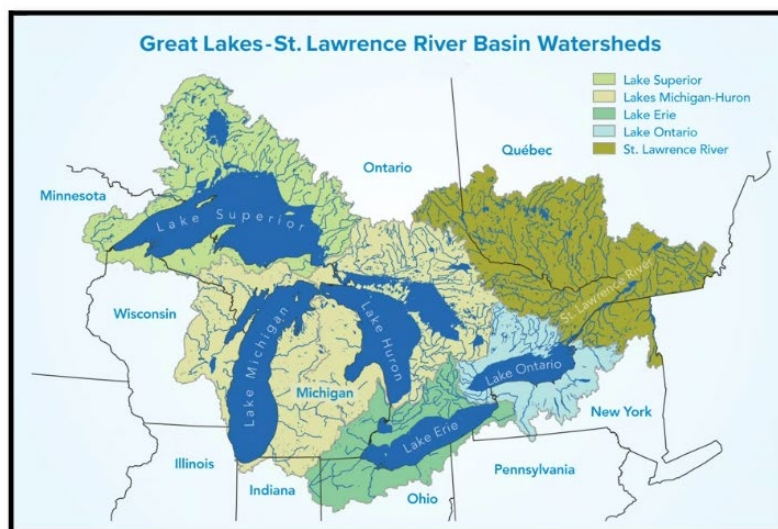
# Water Use Data in the Great Lakes Basin

James Polidori (jpolidori@glc.org)  
Great Lakes Commission

Great Lakes Water Resources Regional Committee  
October 23, 2024

## What is the Great Lakes Commission?

- Interstate compact agency est. 1955
- Promotes the use, development and conservation of Great Lakes
- Facilitates consensus building
- Advocates for the interests of member states and provinces



# Policy Background

1985	Great Lakes Charter
1987	GLC begins operating water use database
2001	Great Lakes Charter Annex
2005	Great Lakes-St. Lawrence River Sustainable Water Resources Agreement
2008	Great Lakes-St. Lawrence River Water Resources Compact

1



## Database Contents

Jurisdiction	Watershed	Use Sector	Source	Data
<ul style="list-style-type: none"> <li>• Illinois</li> <li>• Indiana</li> <li>• Michigan</li> <li>• Minnesota</li> <li>• New York</li> <li>• Ohio</li> <li>• Ontario</li> <li>• Pennsylvania</li> <li>• Québec</li> <li>• Wisconsin</li> </ul>	<ul style="list-style-type: none"> <li>• Lake Superior</li> <li>• Lake Michigan</li> <li>• Lake Huron</li> <li>• Lake Erie</li> <li>• Lake Ontario</li> <li>• St. Lawrence River</li> </ul>	<ul style="list-style-type: none"> <li>• Public water supply</li> <li>• Commercial and institutional</li> <li>• Irrigation</li> <li>• Livestock</li> <li>• Industrial</li> <li>• Power production (once-through and recirculated cooling)</li> <li>• Hydroelectric power (in-stream and off-stream)</li> <li>• Other</li> </ul>	<ul style="list-style-type: none"> <li>• Great Lakes surface water</li> <li>• Groundwater</li> <li>• Other surface water</li> </ul>	<ul style="list-style-type: none"> <li>• Withdrawals</li> <li>• Consumptive use</li> <li>• Diversions into/out of the basin</li> <li>• Intra-basin diversions</li> </ul>

4



## Data Collection and Reporting

### Data Management Dashboard

**Upload Water Data**

Choose a CSV file to upload new data for your state or province.

Choose CSV File

**View My Data**

View, edit, or delete water use data you have uploaded.

View Data

**View & Edit Metadata Entries**

View metadata for a chosen year and jurisdiction.

Select year

Select jurisdiction

View Metadata

**Replace Dataset**

Delete a full dataset and replace it with a new one.

Select year

Delete Data

5

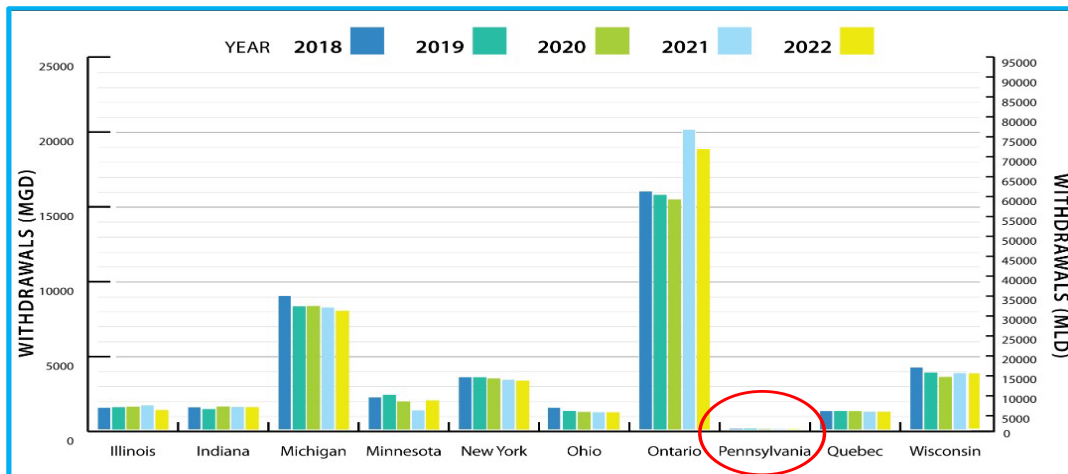
## Data Reporting Protocols

**Table 1. State and Provincial Reporting Compliance Percentage by Water Use Sector\***

Sector	IL	IN	MI	MN	NY	OH	ON	PA	QC	WI
Public Water Supply	100	91	99	100	100	100	100	100	96	100
Self-Supply Commercial & Institutional	100	81	92	100	100	100	100	-	75	95
Self-Supply Irrigation	100	90	75	-	100	100	100	100	75	95
Self-Supply Livestock	-	80	81	-	100	100	97	100	64	95
Self-Supply Industrial	100	88	95	100	100	100	100	-	77	97
Self-Supply Thermoelectric Power Production (Once-through cooling)	100	100	100	100	100	100	83	-	-	100
Self-Supply Thermoelectric Power Production (Recirculated cooling)	-	100	100	-	100	100	-	-	-	-
Off-Stream Hydroelectric Power Production	-	-	N/A	100	100	N/A	-	-	N/A	N/A
In-Stream Hydroelectric Water Use	-	N/A	N/A	100	100	N/A	98	-	N/A	N/A
Other Self Supply	100	94	94	100	100	100	100	-	80	100

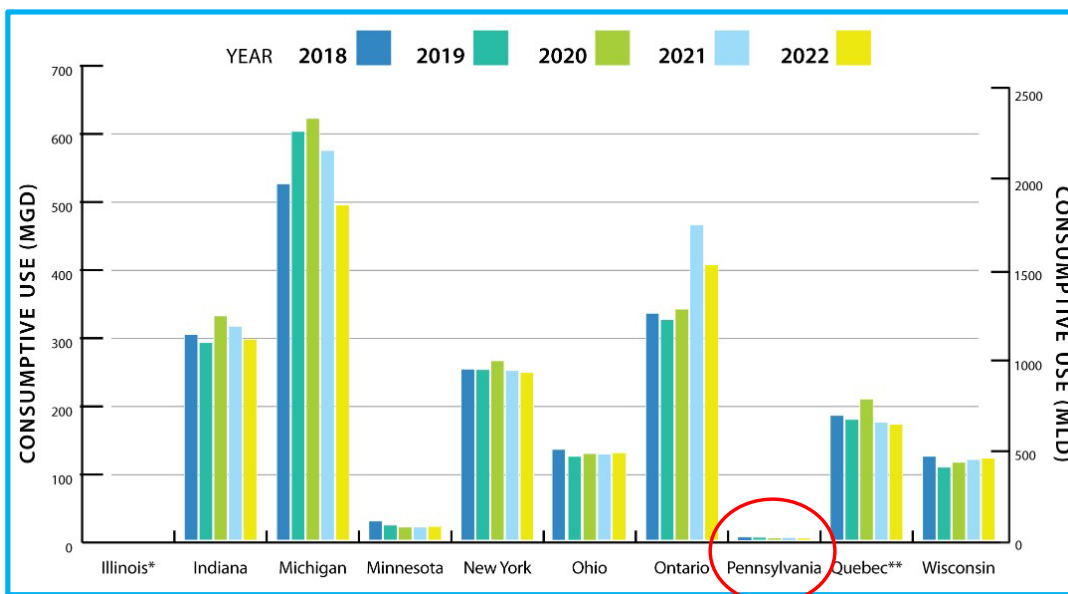
6

## Five-Year Water Use Trends – Withdrawals

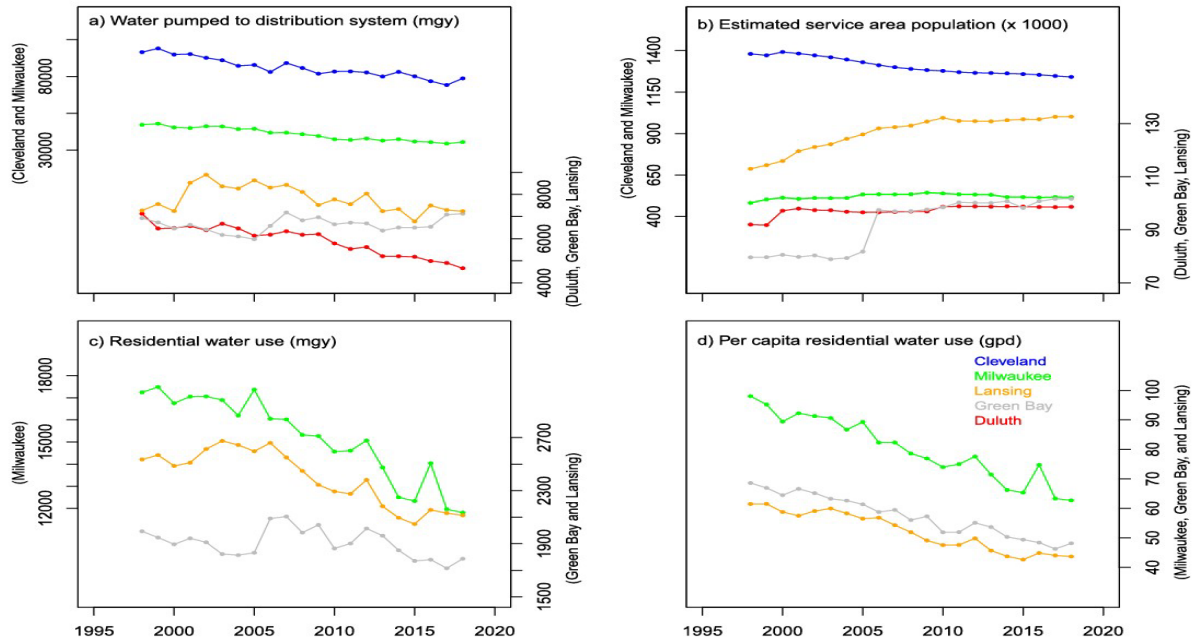


7

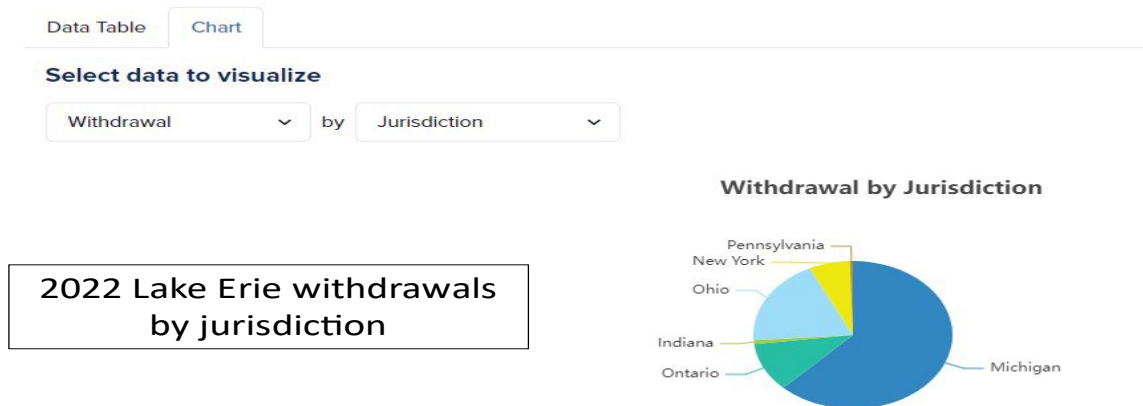
## Five-Year Water Use Trends – Consumptive Use



8

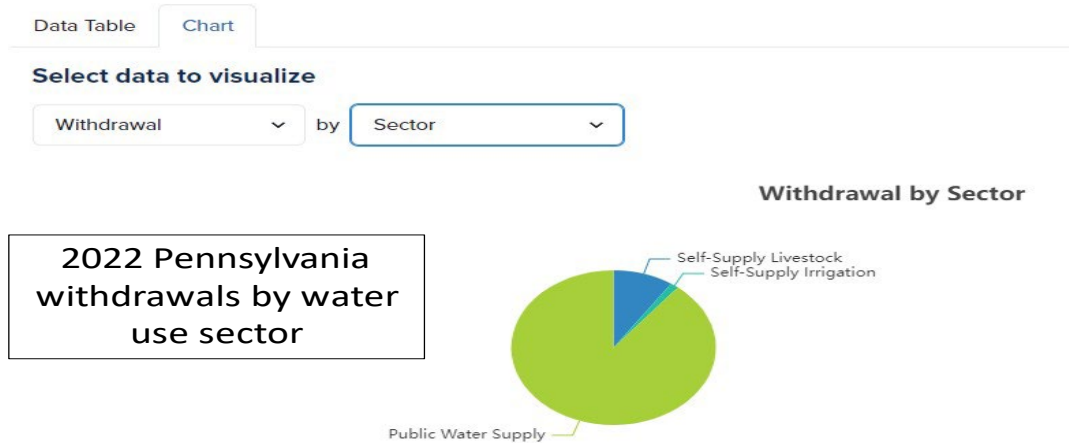


## Create a Query Tool





## Create a Query Tool



11



## Recommendations/Takeaways

- Importance of data availability
- Understanding water use trends ensures better policy and management
- More research on these topics will reveal the full suite of drivers behind trends
- Impact of water use on the regional water balance
- Reliable data will allow managers to adapt to future climate scenarios

12



James went to the site [www.waterusedata.org](http://www.waterusedata.org) to demonstrate the capacity of the site and information available.

Sharing the link to the water use database site: <https://waterusedata.glc.org/>

World class data gathering of a water resource. Comment by Tim Bruno. James can be reached at [jpolidori@glc.org](mailto:jpolidori@glc.org)

## **IWRM Workgroup Discussion**

- A work group to discuss IWRM was created by volunteers of the regional committees and the statewide committee.
- The workgroup held three meetings –
  - May – What are issues to be addressed with IWRM?
  - June – Who is already implementing IWRM?
  - July – What roles do different stakeholders play in IWRM?
- The workgroup decided that IWRM is a collection of principles.
- The IWRM definition used by the workgroup was:

### **IWRM Definition**

*"[IWRM is] an approach to managing water that looks holistically at the planning and management of water supply, wastewater, and stormwater systems. IWRM focuses on the water cycle as a single connected system and promotes coordinated development and management of water, land, and related resources to maximize the economic and social benefits while minimizing impacts on the environment."*

American Planning Association

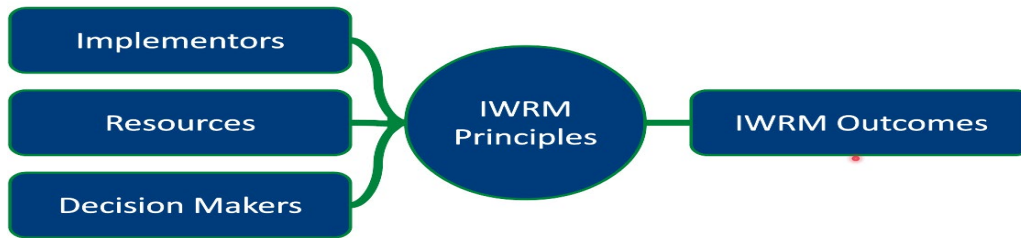
<https://www.planning.org/knowledgebase/watermanagement/>



## **Findings**

- A holistic approach is best to achieve results.
- Collaboration between stakeholders is important.
- Framework for IWRM work – IWRM Principles and IWRM Outcomes:
  - Implementors – people working on the ground and implementing ideas.
  - Resources – to provide background information and data for decision making.
  - Decision makers – planning and coordination.

## Workgroup Findings



### Suggested Actions

- Pre-application meetings.
- Connect local stakeholders with resources and tools.
- Catalogue existing efforts and compile a body of knowledge that others can replicate. (Clearinghouse of information and links on a webpage)

### Discussion

- Silos across departments within DEP remains a challenge. DEP is organized by statutes, and this prevents efficiency and working across departments.

### Items in the chat

- Sharing the link to the water use database site: <https://waterusedata.glc.org/>
- Great Lakes Regional Water Use Database
- Please reach out at [jpolidori@glc.org](mailto:jpolidori@glc.org) with any questions
- Please mark your calendars for the next virtual meeting of the PA Lake Erie Environmental Forum (PA LEEF) scheduled for Tuesday, November 19th, 1-3pm. This will be focused on Water Use. Hear from:
- Gannon's University's Project NePTWNE, Erie Water Works' Sourcewater Assessment and Protection Plan, Great Lakes Commission's Understanding Great Lakes Agriculture and Water Use in Changing Climate Conditions, and the Joyce Foundation's Groundwater Governance Report. Register today at [https://psu.zoom.us/webinar/register/WN\\_q3lvoGRKTiS3BYP923\\_n7w#/registration](https://psu.zoom.us/webinar/register/WN_q3lvoGRKTiS3BYP923_n7w#/registration)
- Welcome! You are invited to join a webinar: Pennsylvania Lake Erie Environmental Forum. After registering, you will receive a confirmation email about joining the webinar.
- For data, information, and reports, please see the Pennsylvania Great Lakes Water and Land Technical Resource Website (WALTER) funded by DEP and facilitated by PSU Sea Grant: <https://pawalter.psu.edu/>
- Home | PA Walter

### Next Steps

Next meeting – The next Great Lakes Regional Committee meeting will be held in October 2025.

Tim Bruno volunteered information on recent hirings through the Great Lakes Restoration program. These new positions will provide additional capacity to support the work of the Great Lakes Committee and should be filled by February of 2025. The new positions are:

- Policy and Program Support person
- Partners and Projects Support person to cultivate partnerships in the region.

The meeting was adjourned at 10:50 a.m.

DRAFT