



**pennsylvania**

DEPARTMENT OF ENVIRONMENTAL PROTECTION



Bureau of Mining Programs

# **2015 Bond Rate Guidelines for the Calculation of Land Reclamation Bonds on Coal Mining Operations**

MRAB Meeting

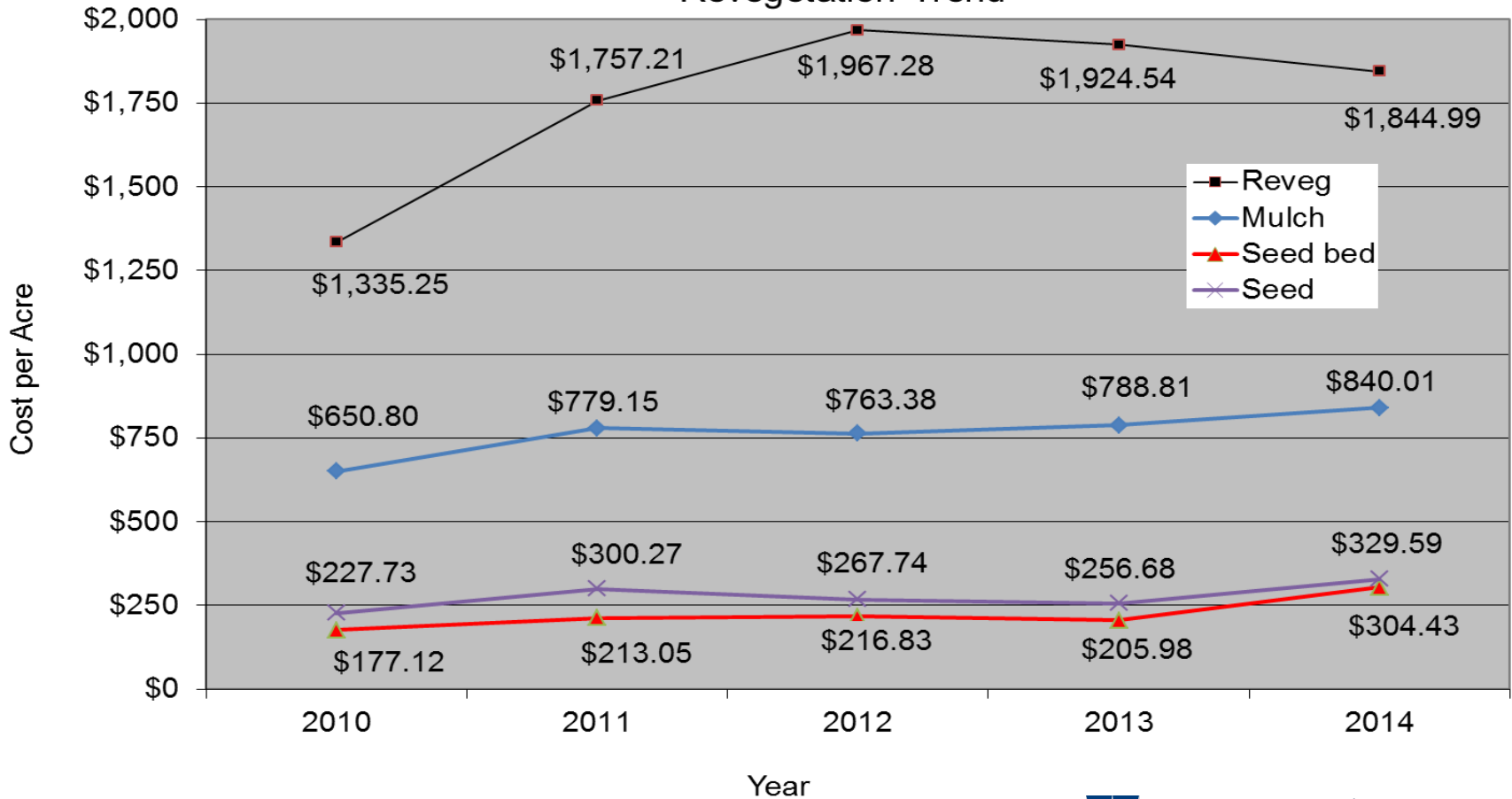
April 23, 2015

# Bond Rates for 2015 effective April 5

Unit Operation	Unit Measure	Unit Costs (\$)
Mobilization/Demobilization	Job	4% of direct costs or \$40,000, whichever is less
Grading (< 500-foot push)	Cubic Yard	0.95
Grading (≥500-foot push/haul)	Cubic Yard	1.20
Selective Grading	Acre	1,250.00
Revegetation	Acre	1,900.00
Tree Planting	Tree	0.75
Ditch Excavation	Cubic Yard	7.00
Jute Matting	Square Yard	4.00
High Velocity Erosion Control	Square Yard	3.80
AASHTO No. 1	Ton	29.00
AASHTO No. 57	Ton	30.00
R3 Rock Lining	Square Yard	33.00
R4 Rock Lining	Square Yard	25.00
R5 Rock Lining	Square Yard	27.00
Geotextile/Filter Fabric	Square Yard	2.80
PVC Lining <sup>1</sup>	Square Yard	12.00
Subsurface Drain	Lineal Foot	19.00

# 5 Year Revegetation Trend

Revegetation Trend



# Bond Rates for 2015 effective April 5

Unit Operation	Unit Measure	Unit Costs (\$)
Erosion and Sedimentation Control (Temporary Installation)	Job	Lump sum (5% of direct costs for site)
Pond Removal Active Phase <sup>2</sup>	Pond	3,800.00
Stage 3 Maintenance Bond Non-Cropland Areas (Land Uses Where Crop Yields Are Not Required)	Acre	100.00
Stage 3 Maintenance Bond Cropland (Not Row Crops) Pastureland Or Land Occasional Cut For Hay (Excludes Seed Cost)	Acre	550.00
Stage 3 Maintenance Bond Cropland Area- Row Crops (includes seed cost)	Acre	850.00

# Bond Rates for 2015 effective April 5

Unit Operation	Unit Measure	Unit Costs (\$)
Stage 3 Mobilization	Job	2,500.00
Pond Removal-Stage 3	Cubic Yards (Embankment Volume) Plus Top Soiling & Revegetation Cost	Use <500 Grading For Pond Embankment Volume Plus Top Soiling & Revegetation Cost For The Area Disturbed
Ditch Removal-Stage 3	Lineal Foot	0.75
Equipment Tire Removal and Disposal	Tire	300.00

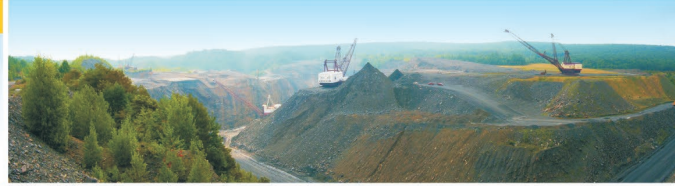
Structure Demolition

Costs Will Be Calculated Using Costs Listed In The  
Construction Industry's Latest Annual Cost Publications, Such  
*As Means Building Construction Cost Data.*



**pennsylvania**

DEPARTMENT OF ENVIRONMENTAL PROTECTION



**Bureau of Mining Programs**

**Bruce Carl**  
**Bureau of Mining Programs**  
**717-787-5103**  
**[brcarl@pa.gov](mailto:brcarl@pa.gov)**