



pennsylvania

DEPARTMENT OF ENVIRONMENTAL PROTECTION



Bureau of Mining Programs

2016 Bond Rate Guidelines for the Calculation of Land Reclamation Bonds on Coal Mining Operations

MRAB Meeting

July 9, 2015

2015 AML Reclamation Grading Costs

- 4 reclamation projects with 912,076 total cubic yards
- Cost per cubic yard ranged from \$0.75 to \$2.00
- 3 low bid averages at \$1.04, \$1.29, and \$0.91 for a weighted average of \$1.08

- Additional yardage of 823,000 cubic yards at cost per cubic yard from \$1.50 to \$4.00
- 3 lowest bid averages were \$2.93, \$2.95, and \$3.91 for a weighted average of \$3.26
- Grading from one area to another area

- Current 2013 – 2015 weighted average at \$0.92 for 500 ft. or less

- 3 more reclamation projects open for bid with total grading of 579,152 cubic yards

2015 AML Reclamation Revegetation Costs

- 4 reclamation projects with 100.4 acres revegetation
- Cost per acre of the 3 lowest bids ranged from \$1,564.06 to \$2,131.41
- Weighted average of 3 lowest bids was \$1,836.10

2015 AML Reclamation Mulch, Seed Bed Preparation and Seed Costs

- Mulch cost per acre of 3 lowest bids was \$597.54
- 3 year weighted average of Mulch cost is \$805.19
- Seed Bed Prep cost per acre of 3 lowest bids at \$175.91
- 3 year weighted average of Seed Bed Prep is \$249.18
- Seed cost per acre of 3 lowest bids at \$293.38
- 3 year weighted average of Seed is \$300.67

2013-2015 Bond Rate Data 2016 Projected with Current Data

Summary of Calculated Bond Rates by Task

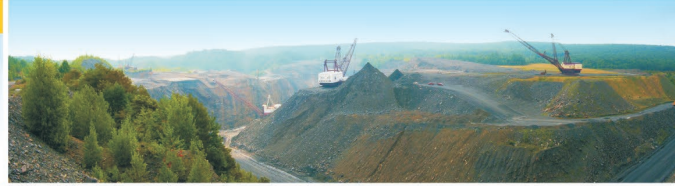
	Unit	2013 wgt ave	2013 amt	2014 wgt ave	2014 amt	2015 wgt ave	2015 amt	13-15 Weighted	2016
Grading1	Yd	\$0.87	3,709,847	\$0.93	4,986,857	\$1.08	912,076	\$0.92	\$0.95
Reveg	Acre	\$1,924.54	332.0	\$1,844.99	540.0	\$1,836.10	100.4	\$1,871.23	\$1,900.00
Mulch	Acre	\$788.81	352.5	\$865.31	442.8	\$597.54	100.4	\$805.19	
Seed Bed Prep	Acre	\$205.98	352.5	\$304.43	408.8	\$175.91	100.4	\$249.18	
Seed	Acre	\$256.68	352.5	\$326.15	656.3	\$293.38	165.9	\$300.67	

	2014	2014	2015	2015	2016	2016
Reveg Tot	\$1,800.00	\$1,800.00	\$1,900.00	\$1,900.00	\$1,900.00	\$1,900.00
Mulch	\$800.00	\$800.00	\$800.00	\$800.00	\$800.00	\$800.00
Seed Bed	\$215.00	\$215.00	\$250.00	\$250.00	\$250.00	\$250.00
Seed	\$280.00		\$300.00		\$300.00	
	\$505.00	\$785.00	\$550.00	\$850.00	\$550.00	\$850.00
	Pasture	w/seed	Pasture	w/seed	Pasture	w/seed



pennsylvania

DEPARTMENT OF ENVIRONMENTAL PROTECTION



Bureau of Mining Programs

Bruce Carl
Bureau of Mining Programs
717-783-3516
brcarl@pa.gov