



PENNSYLVANIA CONSERVATION  
**HERITAGE**  
PROJECT

[paconservationheritage.org](http://paconservationheritage.org)



# CRADLE OF CONSERVATION

AN ENVIRONMENTAL HISTORY OF PENNSYLVANIA

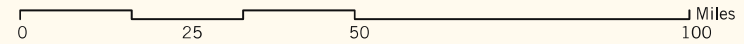
GREAT LAKES BASIN  
(ERIE WATERSHED)

# PENNSYLVANIA'S MAJOR RIVER BASINS

GREAT LAKES BASIN  
(GENESEE WATERSHED)



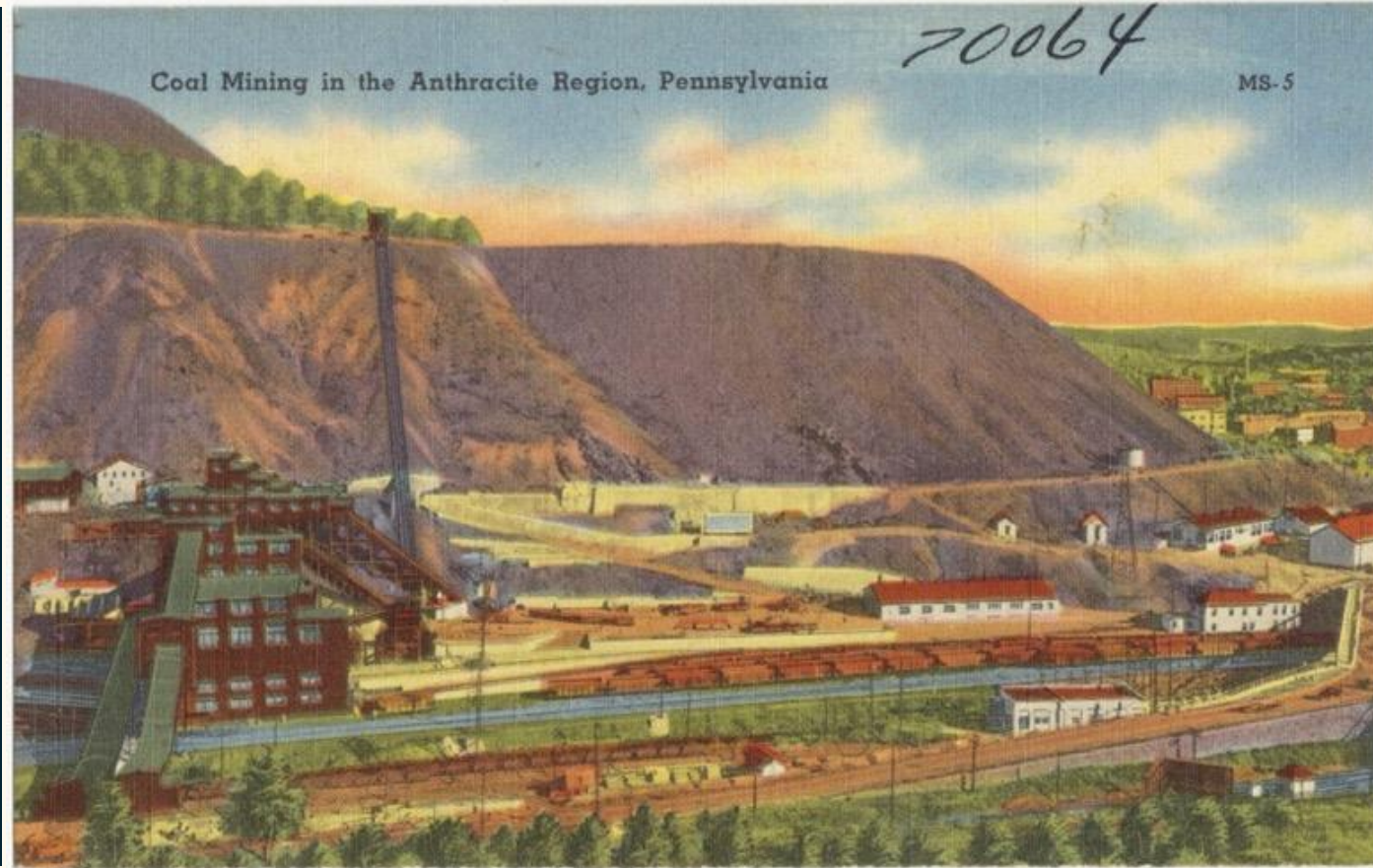
- |                                 |                                       |
|---------------------------------|---------------------------------------|
| Gunpowder Watershed             | Erie Watershed / Great Lakes Basin    |
| Northeast / Elk River Watershed | Genesee Watershed / Great Lakes Basin |
| Ohio River Basin                | Delaware River Basin                  |
| Potomac River Basin             | Susquehanna River Basin               |



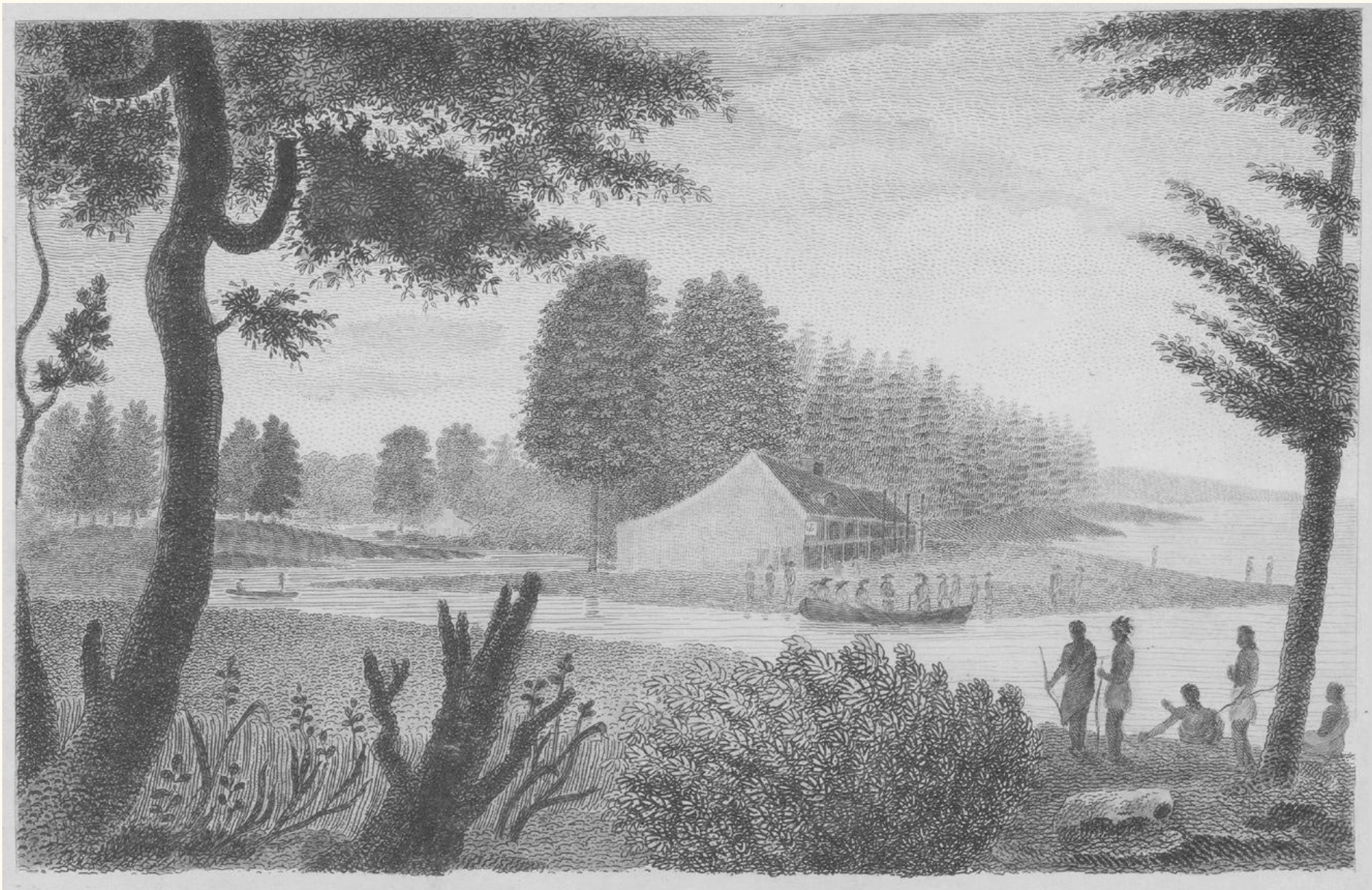


“I understand work to include duty, craft, and creativity. As an expression of ideas, our work reveals how we answer moral questions that arise in our use of land ... landscape is about point of view. Examining **working landscapes**, which are both places and depictions of places, demands then that I judge what I have been seeing and doing in the world.”

Bill Conlogue, *Here and There: Reading Pennsylvania's Working Landscapes*, 2013.

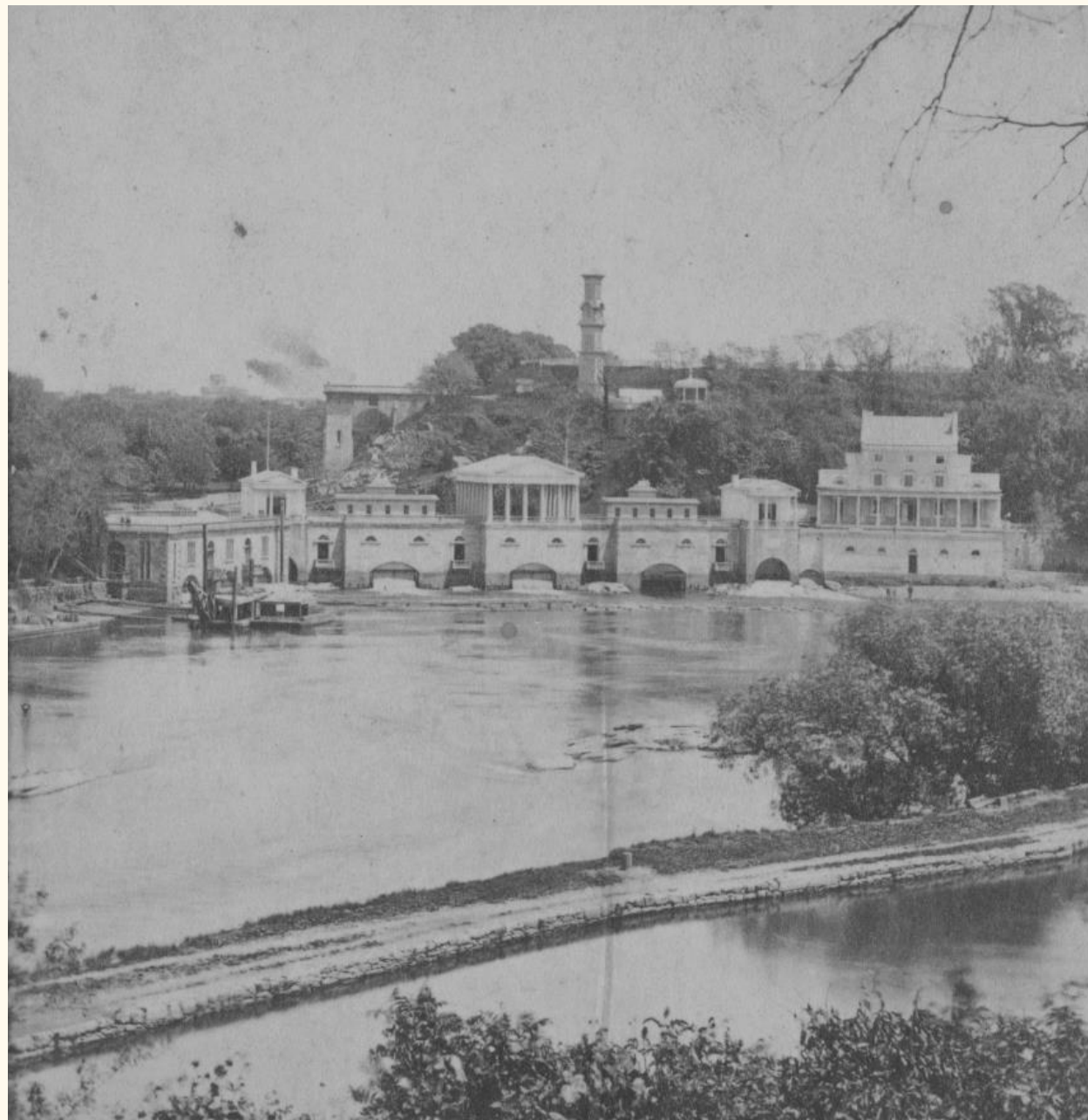






**Figure 1.3** The landing of Penn at Dock Creek, Philadelphia, ca. 1830. (Credit: Gift of Mr. And Mrs. Meyer P. Potamkin, The State Museum of Pennsylvania.)





**Figure 2.2** Fairmount Water Works, half of a stereo view, ca. 1860. (Courtesy: Library Company of Philadelphia.)



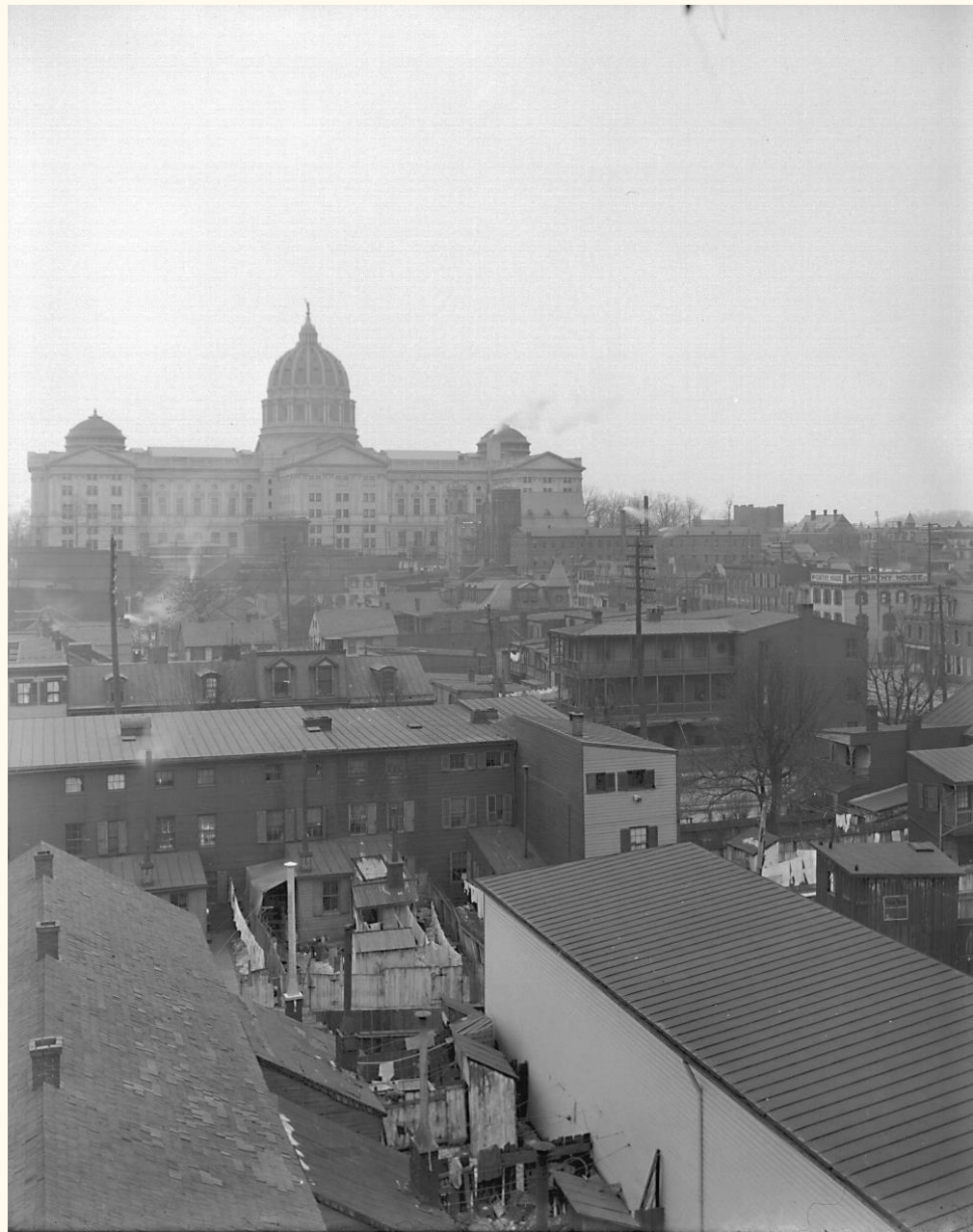
**Figure 3.2** W. T. Clarke, "Ready for Another Load. Hammersley Region, Northwestern Clinton Co., PA." (Courtesy: Pennsylvania State Archives, Clarke images, #3931, RG-6.)





**Figure I.1** Pennsylvania state foresters, 1908. With Mira Lloyd Dock, Ralph Brock, and Joseph T. Rothrock in Rothrock's office, State Capitol building. (Courtesy: Franklin County Historical Society.)





**Figure 3.1** Old Eighth Ward, Harrisburg, looking northwest toward the State Capitol building, ca. 1907. (Courtesy: Pennsylvania State Archives, J. Horace McFarland Papers, MG-85.)



**Figure I.1** Pennsylvania state foresters, 1908. With Mira Lloyd Dock, Ralph Brock, and Joseph T. Rothrock in Rothrock's office, State Capitol building. (Courtesy: Franklin County Historical Society.)





First class admitted to the Pennsylvania State Forest Academy at Mont Alto, Fall 1903.  
(Credit: Pennsylvania State Archives)



**Figure 4.2** Aerial view of Levittown, 1952. (Courtesy: Temple University Libraries, Special Collections Research Center, McDowell Evening Bulletin Collection.)



No. 1



No. 2



## *The Levittowner*

PRICE: \$10,990      \$67 A MONTH

**NO CASH REQUIRED FROM VETERANS**



No. 3



No. 4



**Figure 4.1** Rachel Carson, official photograph, ca. 1943.  
(Courtesy: U.S. Fish and Wildlife Service.)





**Figure 4.3** Governor George Leader signing Water Resources Bill with Dr. Maurice Goddard, secretary of the Department of Forests and Waters, December 15, 1955. (Courtesy: Pennsylvania State Archives, Governor's File, #665, RG-12.)



On August 20, 1957, William and Daisy Meyers and their three children became the first African American residents in of Levittown. **Credit:** Image by Corbis-Bettmann





Kinzua Dam Protest, August 1961, Photo by Theodore Brinton Hetzel.  
Credit: Swarthmore College Peace Collection



Demolition of J&L (LTV) Steel Blast Furnace, Pittsburgh, 1983





**Figure 5.3** New Jersey Zinc Company, Palmerton Plant, Carbon County, Pennsylvania. Placed on the Superfund program's National Priorities List in 1983. (Courtesy: Library of Congress, Historic American Engineering Record.)



**Figure 4.4** Area Fisheries Manager Blake Weirich using a pH kit to test the water in his region, 1986. (Courtesy: Pennsylvania Fish and Boat Commission.)





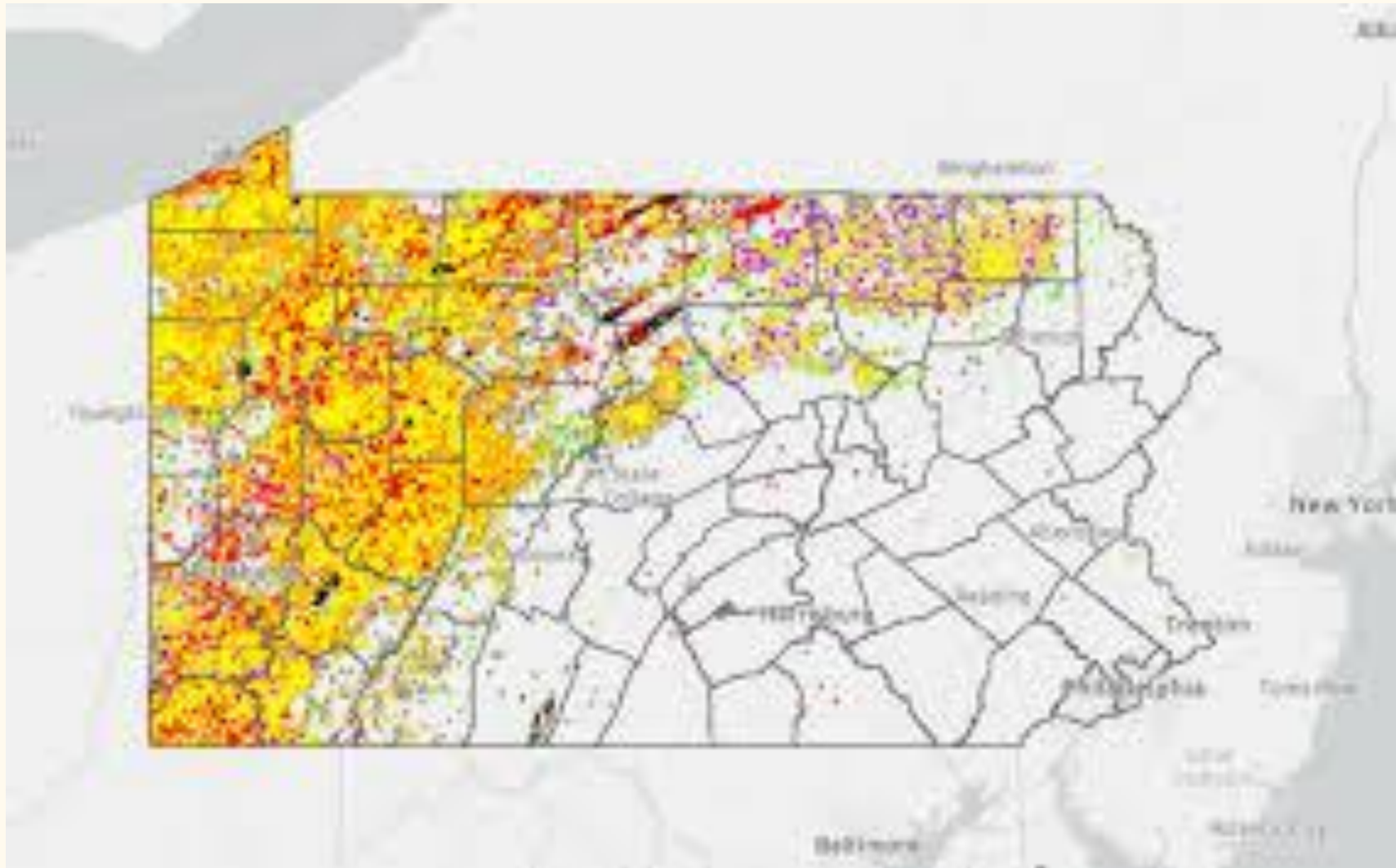
**Figure 5.2** Fledgling bald eagle from the Pennsylvania Game Commission's reintroduction program, ca. 1985. (Courtesy: Charles Campfield, Pennsylvania Game Commission.)



Chester Incinerator Protest

Credit: Tishman Environment and Design Center, The New School





Map of Pennsylvania Natural Gas Well Sites, 2022  
Credit: FracTracker Alliance





**Figure C.1** Social distancing with friends on the Rocky Knob Trail, December 2020.  
(Courtesy: Allen Dieterich-Ward.)





PENNSYLVANIA CONSERVATION  
**HERITAGE**  
PROJECT

[paconservationheritage.org](http://paconservationheritage.org)