

**Who we are
and issues we see people facing!**

WHO WE ARE?

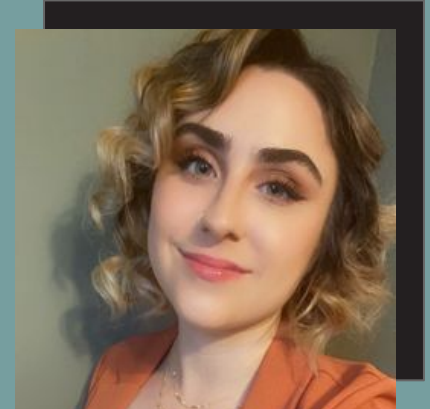


KIM ANDERSON
DIRECTOR OF
MEMBER MOBILIZATION

*Western PA
Outreach &
Methane*



Growing network
of evangelicals
throughout the
state.



CAROLYN HECKMAN
ASSOCIATE DIRECTOR OF
PENNSYLVANIA POLICY

*Eastern PA
Outreach, Renewables
& Policy*

WHO IS EEN?



OUR MISSION

EEN inspires, equips, educates, and mobilizes evangelical Christians to love God and others by rediscovering and reclaiming the Biblical mandate to care for creation and working toward a stable climate and a healthy, pollution-free world.



WHO IS EEN?

Our Vision

Sharing the fullness of the gospel of Jesus Christ, we envision a world with abundant life for all where people are free from the burden of pollution, all creation flourishes in right relationship, and children have hope and expectation for a healthy, vibrant future.



Creation Care is a matter of life!

OUR RICH HISTORY

- **FOUNDED IN 1993**
- **DO WORK ON THE FEDERAL LEVEL**
 - **WINS ON ISSUES LIKE SOOT, MERCURY, METHANE, TRANSPORTATION**
 - **WHAT WOULD JESUS DRIVE?**
- **DO STATE WORK IN PENNSYLVANIA AND A FEW OTHER STATES**

POLICY PILLARS: WIN-WIN-WINS OF CREATION CARE



POLICY PILLAR: DEFEND LIFE



The Bible tells
us to care!

**Defend the weak and
the fatherless; uphold
the cause of the
poor and the
oppressed. Rescue the
weak and the needy.**

–Psalm 82: 3-4 NIV

DEFEND LIFE: BIG FOUR CONDITIONS

- PM 2.5 (soot), ozone, and other pollutants are linked to asthma, allergies, ADHD and autism (ASD).
- More than 37% of children suffer from these conditions.



The map displays the state of Pennsylvania and parts of Maryland, New Jersey, and New York. Major cities are marked with dots and labeled. Interstate highways are shown as blue lines with their respective shields. A red dashed line outlines the state of Pennsylvania. Overlaid on the map are five blue text boxes with white borders, each containing the name of a city and its ranking for being a challenging place to live with asthma. The rankings are: Allentown (#1), Philadelphia (#5), Harrisburg (#14), Pittsburgh (#45), and Erie (no number shown).

Most Challenging Places in America To Live with *Asthma*

Pittsburgh: #45

Harrisburg: #14

Allentown: #1

Philadelphia: #5

Most Challenging Places in America To Live with Allergies

Scranton: #19

Allentown: #55

Harrisburg: #57

Philadelphia: #77



A map of Pennsylvania is shown with a red dashed border. The word "Autism" is written in blue text in a white box in the upper center. A larger white box in the center contains blue text stating that 4.5 percent of Pennsylvania parents reported their child had autism, which is higher than the national prevalence of 2.9 percent. The map includes labels for major cities like Erie, Youngstown, Pittsburgh, Philadelphia, and Baltimore, as well as interstate highways like I-90, I-76, I-86, and I-95. State names "MARYLAND" and "NEW JERSEY" are also visible.

Autism

4.5 percent of Pennsylvania parents reported that their child had autism. This is more than the national prevalence of 2.9 percent.

DEFEND LIFE: PERSONAL STORY

Pastor Nathaniel Goodson Jr.

Superintendent of Prayer Chapel Church, Upper
Darby, PA
EEN Board Member



DEFEND LIFE: PM 2.5 (SOOT)

- According to the American Lung Association, 63 million Americans each year are exposed to **repeated short-term spikes in soot pollution**, and more than 20 million Americans suffer **dangerous levels on a year-round basis**.
 - 24 of 32 counties received a C or below for particle pollution air quality (of those rated).
 - Both Philadelphia and Delaware County, PA failed year-round particle pollution.
 - Pittsburgh-New Castle-Weirton, PA-OH-WV is the 19th worst areas for year round particle pollution

DEFEND LIFE: PM 2.5 (SOOT)

- Causes premature birth
 - 1 out of 9 US births
 - 1 out of 6 African-American births
- Linked to health risks, including asthma, heart disease, COPD, Parkinson's disease, dementia, low birth weight, greater risk of preterm birth, and higher rates of infant mortality.



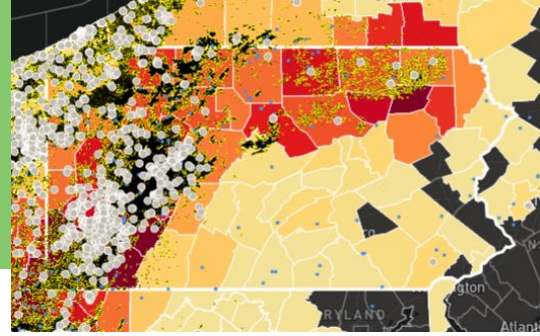
DEFEND LIFE: PERSONAL STORY

Carolyn Heckman

Associate Director of Pennsylvania Policy



DEFEND LIFE: METHANE

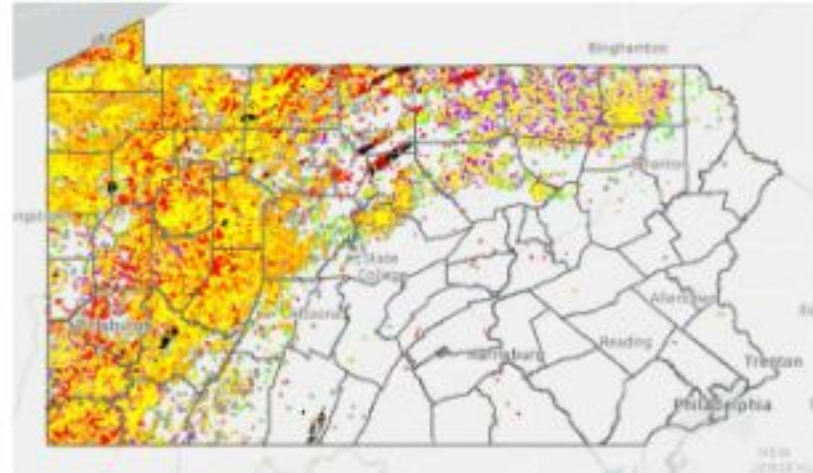


- The oil and gas industry → leading industrial source of methane pollution.
- Methane has more than 80 times the warming power of carbon dioxide in the first 20 years
- Toxic pollution is released alongside methane which can harm health
 - Smog-causing volatile organic compounds (VOCs) can worsen asthma and respiratory disease, cause heart disease and lead to early death.
 - Toxic air pollutants like benzene can also increase the risk of cancer, cause immune system damage, and developmental problems.
 - Proximity to wells is correlated with early death risk in those over 65.

OIL AND GAS THREAT MAP

- **Living within a ½ mile of an oil and gas production facility is correlated with additional negative health impacts .**
 - **1,482,810 people in Pennsylvania**
 - **202,388 students in 953 schools**
 - **172,987 threatened people of color**

Oil and Gas Threat Map →



DEFEND LIFE: PERSONAL STORY

Kim Anderson

Director of Member Mobilization

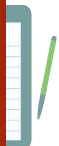


MORE HOT SUMMER DAYS

DAYS ABOVE NORMAL



Annual summer (June, July, August) days above NCEI 1991-2020 climate normal.
Source: NOAA (ACIS)



MORE HOT SUMMER DAYS

DAYS ABOVE NORMAL



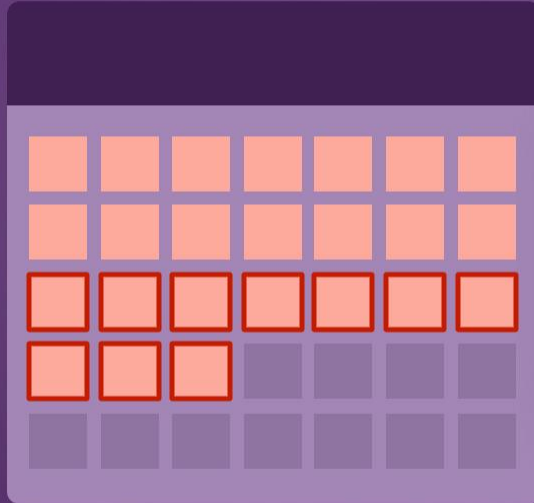
Annual summer (June, July, August) days above NCEI 1991-2020 climate normal.
Source: NOAA (ACIS)

Pregnancy heat risk days in US nearly doubled

PENNSYLVANIA

PREGNANCY HEAT-RISK DAYS

Average annual days above 85.1°F, 2020-2024




10 DAYS
ADDED BY
CLIMATE CHANGE

Pregnancy heat-risk days are days with maximum temperatures above the local 95th percentile. Analysis based on ERA5 reanalysis daily maximum temperature data for 2020-2024 and the Climate Shift Index system.

HEAT RISKS DURING PREGNANCY

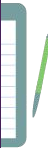
Climate change-fueled extreme heat increases risks of



**Preterm birth,
stillbirth, and
low birth weight**

**Hypertension and
gestational diabetes**

**Maternal
hospitalizations
and mortality**



POLICY PILLAR: PROTECT GOD'S CREATION



PROTECT GOD'S CREATION: TREE PLANTING



Benefits of Trees

- Lowers Heat Risk
- Captures Carbon
- Saves Energy
- Improves Air Quality

Trees Provide Healthier Neighborhoods, Climate Solutions, and Economic Benefits

PROTECT GOD'S CREATION: TREE PLANTING



Recruiting churches and Christian schools in Philly and Pittsburgh to plant trees this fall.

Hopefully more to come in the future!

POLICY PILLAR: FAMILY SUSTAINING CAREERS/PRICES



FAMILY SUSTAINING CAREERS/PRICES: RENEWABLES



As a mom, Solar for Schools brings me peace of mind | Opinion

Updated: Aug. 13, 2024, 5:22 p.m. | Published: Aug. 13, 2024, 5:10 p.m.



By [Guest Editorial](#)
By Carolyn Heckman



- ☐ ENERGY EFFICIENCY
- ☐ METHANE
 - ☐ BONDING REFORM
 - ☐ SETBACKS
 - ☐ STATE IMPLEMENTATION PLAN
- ☐ PJM
- ☐ CAP AND INVEST: RGGI, PACER
- ☐ LIGHTING PLAN: PACER, PRESS, COMMUNITY ENERGY, EDGE, (+ ACT 129 REFORM & PACER)

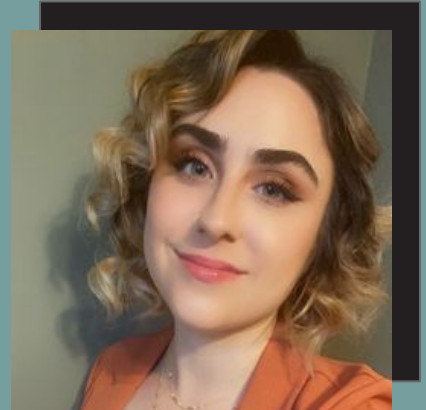


QUESTIONS?



KIM ANDERSON
DIRECTOR OF
MEMBER MOBILIZATION

kim@creationcare.org



CAROLYN HECKMAN
ASSOCIATE DIRECTOR OF
PENNSYLVANIA POLICY

carolyn@creationcare.org