

Final Stream Redesignations Fishing Creek, et. al

Environmental Quality Board

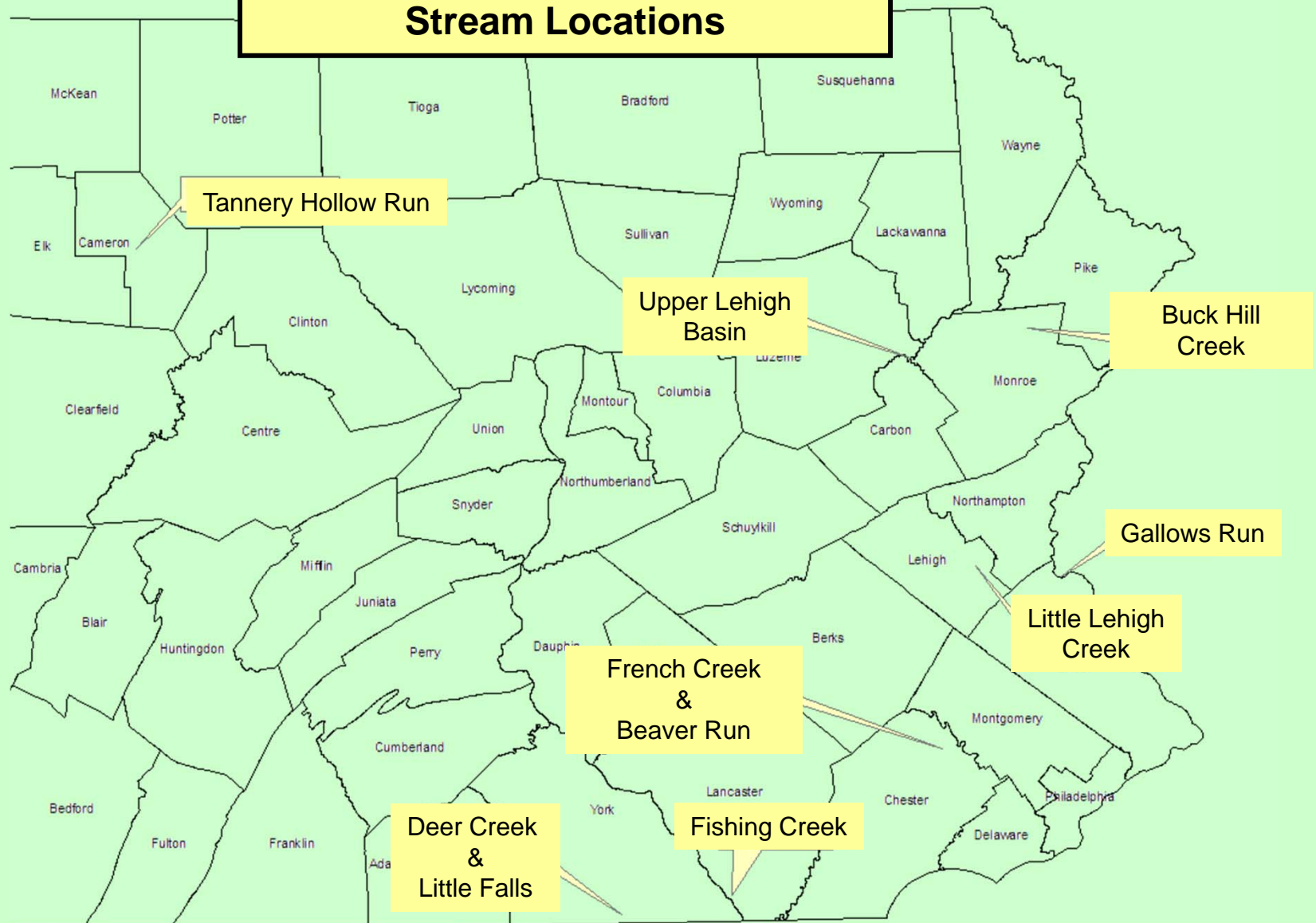
May 18, 2011

Bureau of Water Standards and Facility Regulation
Division of Water Quality Standards



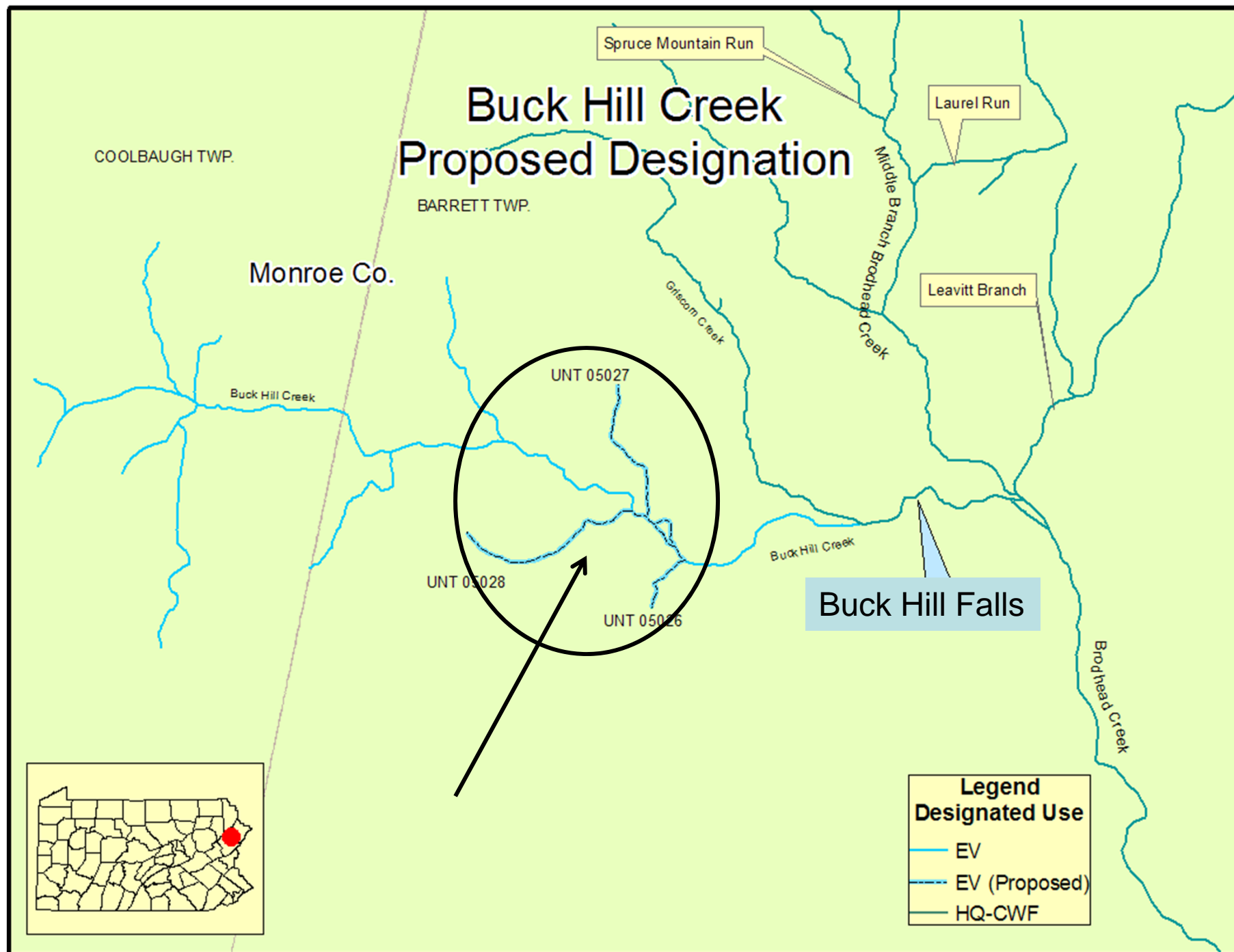
Fishing Creek Package

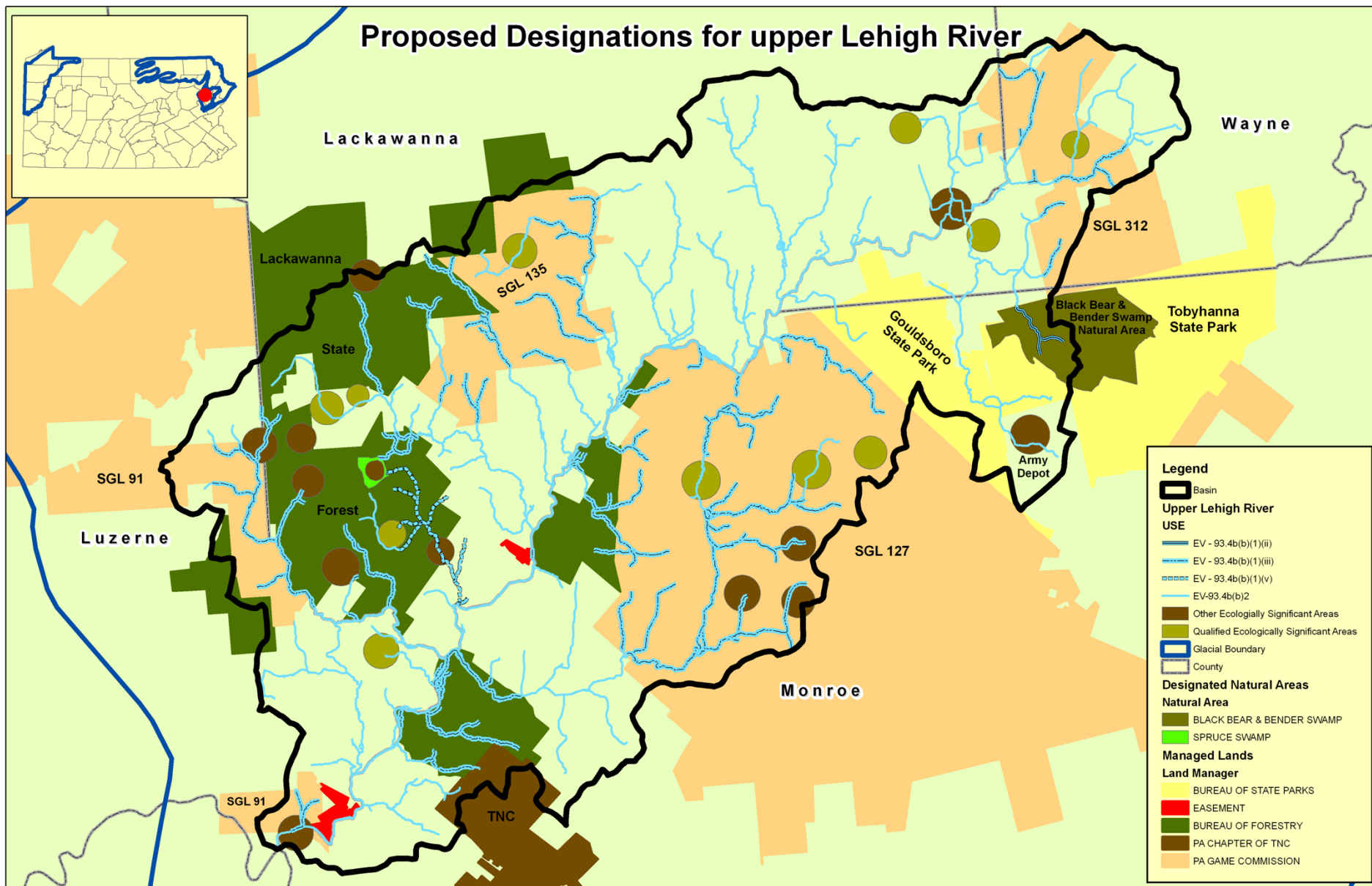
Stream Locations



Fishing Creek, et al. Stream Redesignations Package

- **July 13, 2010:** EQB approved Proposed Rulemaking
- **September 18, 2010:** Proposed Rulemaking was published in the Pennsylvania Bulletin.
- **November 2, 2010:** Public comment period ended.
- **163 commentators:**
 - 162 supportive of French Creek basin redesignation
 - US EPA commended DEP on its continuing efforts
 - No opposing comments
- Proposed Rulemaking submitted to IRRC & Committees. No comments.





25 Pa. Code Section 93.4b(b)(1)(ii) Upper Lehigh River

- Water located in a designated State Park Natural Area or State Forest Natural Area and currently designated HQ
- Tobyhanna State park natural areas include, Black Bear and Bender Swamps
- Lackawanna State forest natural areas include, Spruce Swamp
- 2.3 stream miles qualify as EV

25 Pa. Code Section 93.4b(b)(1)(iii) Upper Lehigh River

- Water is an outstanding state resource water and currently designated HQ
 - State agency has adopted “water quality protective measures” in a resource management plan
 - Measures taken provide long-term protection of watershed corridor
- 79.1 stream miles qualify as EV

25 Pa. Code Section 93.4b(b)(1)(v) Upper Lehigh River

- Water achieves a biological condition score of at least 92%
- Sand Spring Creek, 5.5 stream miles qualify as EV

25 Pa. Code Section 93.4b(b)(2) Upper Lehigh River

- Water is a “surface water of exceptional ecological significance” and currently designated HQ
 - “...important, unique or sensitive ecologically,
- The waters in 22 areas qualify for designation as EV
- 132.4 stream miles qualify as EV

Upper Lehigh River (continued from previous slide)

- **7 Rare Ecological Community Types**
 - Natural pond
 - Mesic scrub oak-heath-pitch barrens
 - Northern conifer swamp
 - Acidic glacial lake
 - Acidic shrub swamp
 - Boreal conifer swamp
 - Oligotrophic glacial kettlehole bog
- **Filtering function and ecological connectance**
 - Supports the natural diversity
 - Maintains, largely undisrupted, the ecology and hydrology of the basin

Public **Support** for EV Recommendation of Upper Lehigh

- **Notice of Stream Redesignation Evaluation → Supportive Response**
 - Thornhurst Twp, Lackawanna Co.
 - Buck Twp, Lackawanna Co.
 - Monroe Co. Conservation District
- **30 day comment period for stream report → Supportive Response**
 - Lackawanna Co. Conservation District
 - Luzerne Co. Conservation District
 - Wayne Co. Conservation District
 - Pennsylvania Council of Trout Unlimited
 - Brodhead Chapter of Trout Unlimited
 - Stanley Cooper Sr. Chapter of Trout Unlimited
 - Lehigh Cold Water Fishery Alliance
 - Wildlands Conservancy
 - Riverside Estates Community Association
 - Thornhurst Twp, Lackawanna Co.
- **Additional letter of support from Monroe Co. Conservation District**
- **The Honorable Michael Carroll - 118th District, House of Representatives**

These supportive letters were provided by Barbara Smith who represents the petitioners (North Pocono CARE)



No Change Gallows Run

DURHAM

BRIDGETON

SPRINGFIELD

Bucks

NOCKAMIXON

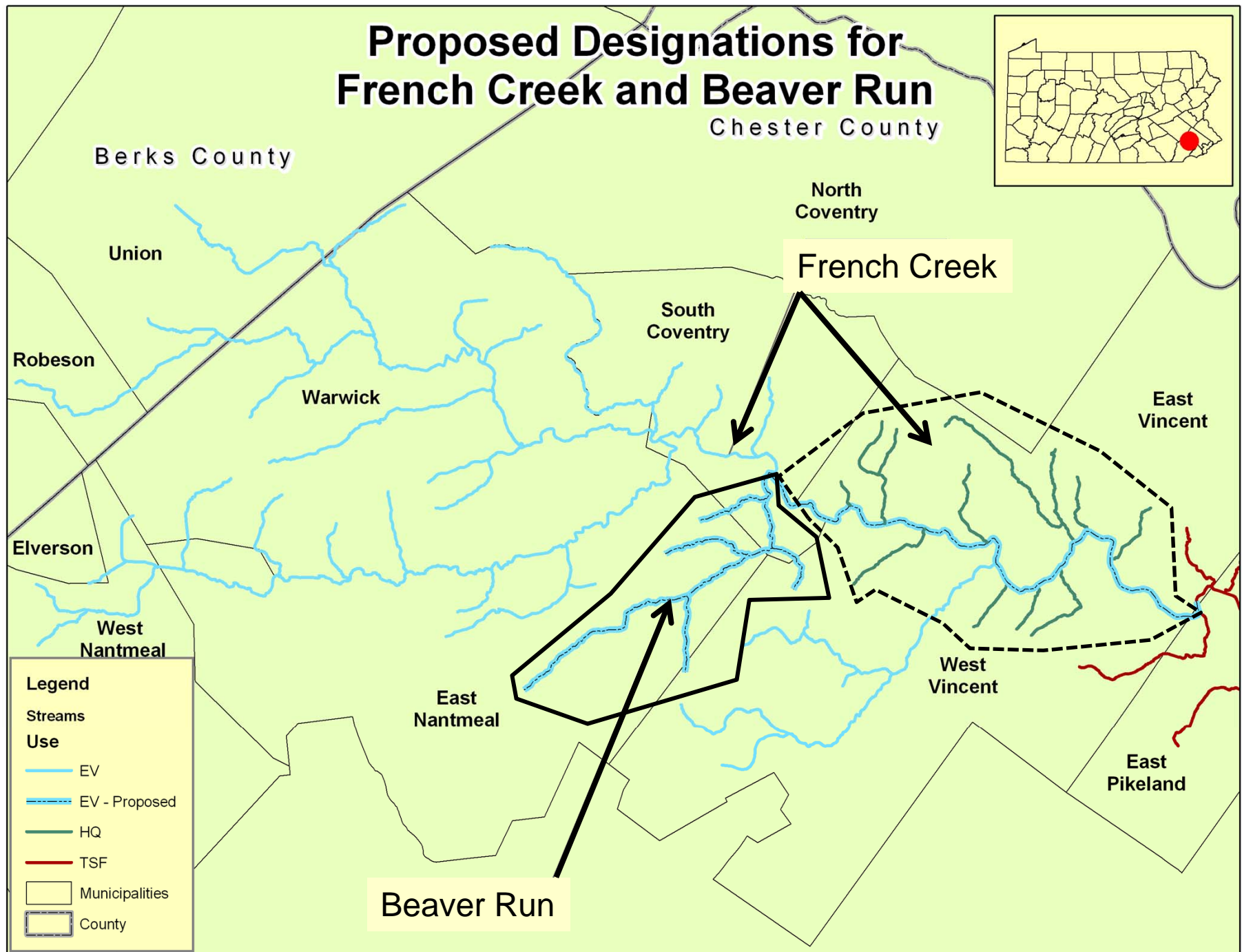
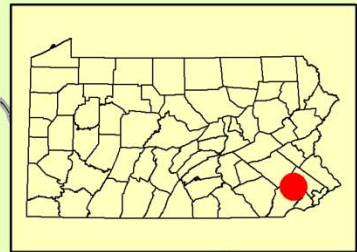


Legend
Current Designated Use

- CWF, MF
- Delaware River

Proposed Designations for French Creek and Beaver Run

Chester County



Tannery Hollow Run

SHIPPEN

Sterling Run

LUMBER

Cameron




Tannery Hollow Run

GIBSON

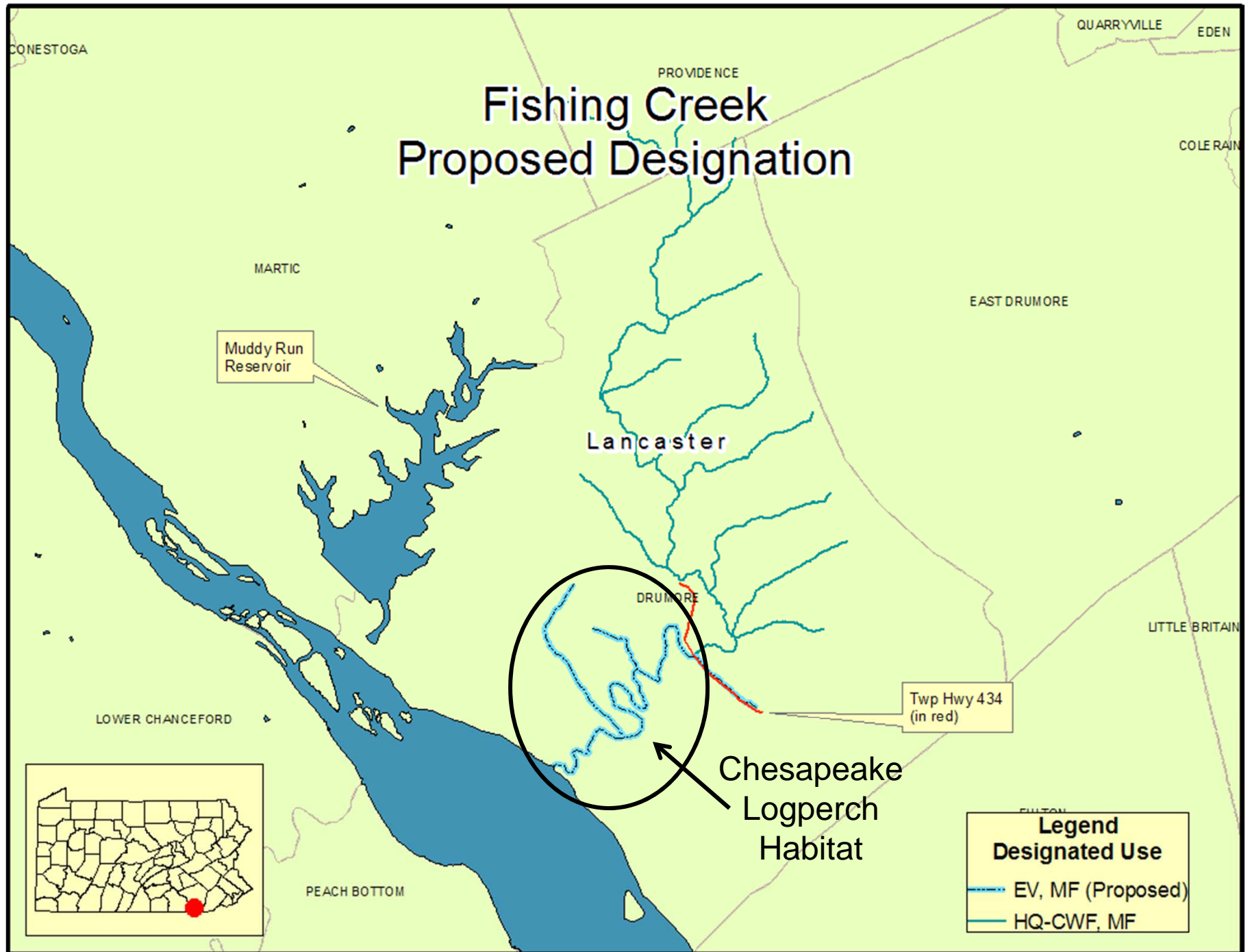


BENEZETTE

Elk

Legend	
Proposed Designated Use	
	CWF, MF
	HQ-CWF, MF
	EV, MF - (proposed)

Fishing Creek Proposed Designation



25 Pa. Code Section 93.4b(b)(2) Fishing Creek

- Water is a “*surface water of exceptional ecological significance*”
- 7.27 stream miles qualify as EV
- The population of Chesapeake Logperch in Fishing Ck. represents a significant portion of the total global population of this species



Proposed Designation for Deer and Little Falls Creeks

Cold Water Fishes

No Change

Little Falls Creek

Deer Creek



Legend

- Municipalities
- Streams
- USE
 - CWF
 - CWF (Proposed)

