

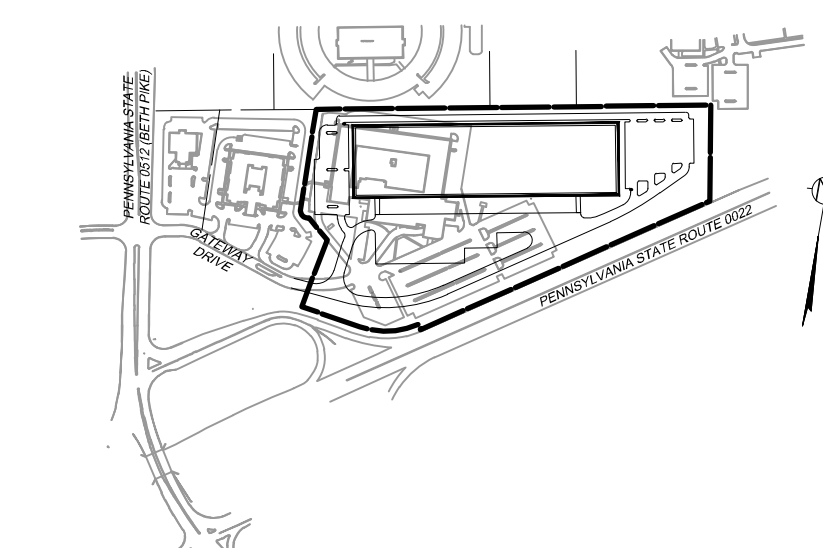
THE PIDCOCK COMPANY

CIVIL ENGINEERING AND LAND PLANNING
ARCHITECTURE
LAND SURVEYING

Onford Drive at Fish Hatchery Road
2451 Parkwood Drive Allentown, Pennsylvania 18103-9608
Telephone: 610-791-2252
Telefax: 610-791-1256
E-mail: info@pidcockcompany.com

PROFESSIONAL SEAL

KEY MAP



NOTES:
1. THIS PLAN HAS BEEN PREPARED IN CONJUNCTION WITH MUNICIPAL REGULATIONS AND ORDINANCES RELATING TO LAND USAGE AND DIMENSIONAL REQUIREMENTS OF ZONING AND RELATED PERMITS. HOWEVER, NOT CONSIDERED ARE PERIPHERAL ISSUES SUCH AS CLARITY OF TITLE, SUBSURFACE CONDITIONS INCLUDING BUT NOT LIMITED TO SOIL AND WATER CONTAMINATION, SINKHOLE ACTIVITY AND HISTORICAL AND ARCHAEOLOGICAL ISSUES, OR OTHER SUCH ISSUES AS MAY AFFECT THE MERCHANTABILITY OF THE LAND. THE PIDCOCK COMPANY MAKES NO REPRESENTATION OR WARRANTY CONCERNING THESE ISSUES WHICH SHOULD BE ADDRESSED BY QUALIFIED PROFESSIONALS ENGAGED IN THE APPROPRIATE FIELDS OF PRACTICE.
2. THESE DOCUMENTS ARE PROVIDED FOR MUNICIPAL REVIEW ONLY AND ARE NOT TO BE UTILIZED FOR ANY OTHER PURPOSE. THE DOCUMENTS ARE NOT ISSUED FOR CONSTRUCTION UNLESS SPECIFICALLY NOTED AS SUCH BELOW.

CONTRACTOR'S OBLIGATION REGARDING COORDINATION OF DOCUMENTS AND FIELD CONDITIONS
THE CONTRACT DOCUMENTS PRESENT THE DESIGN INTENT. IT SHALL BE THE CONTRACTOR'S RESPONSIBILITY TO REVIEW ALL PLANS, SPECIFICATIONS, ADDENDA, CONSTRUCTION SKETCHES AND OTHER CONTRACT DOCUMENTS FOR CONSISTENCY. SIMILARLY, IT SHALL BE THE CONTRACTOR'S RESPONSIBILITY TO REVIEW FIELD CONDITIONS, INCLUDING COORDINATION WITH ALL UTILITIES. THE CONTRACTOR SHALL COMPLETE ANY TEST EXCAVATIONS IN ADVANCE OF ORDERING MATERIALS OR OF CONSTRUCTION IN AN AREA OF UTILITY CROSSINGS OR POTENTIAL INVOLVEMENT. IT SHALL BE THE CONTRACTOR'S RESPONSIBILITY TO BRING ANY INCONSISTENCIES IN THE DOCUMENTS OR ANY APPARENT CONFLICTS TO THE ATTENTION OF THE ENGINEER BEFORE ORDERING MATERIALS AND BEFORE PROCEEDING WITH CONSTRUCTION IN THE AREA SO THAT THE ENGINEER MAY REVIEW THE CONDITIONS AND RECOMMEND ANY ADJUSTMENTS TO THE DOCUMENTS THAT MAY BE NECESSARY, OR TO RECOMMEND RELOCATION OF A UTILITY OR OTHER REMEDIAL WORK THAT MAY BE REQUIRED.

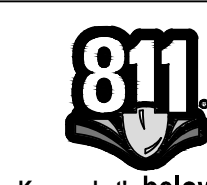
PLAN PREPARED BY:
BRENT C. TUCKER, P.E.
THE PIDCOCK COMPANY
2451 PARKWOOD DRIVE
ALLENTOWN, PA 18103
TELEPHONE NO.: 610-791-2252

NOTICE
THIS PLAN IS INTENDED FOR SOIL EROSION AND SEDIMENTATION CONTROL PURPOSES ONLY

DATE	DESCRIPTION
6	
5	
4	JANUARY 22, 2024 REVISED PER NCCD COMMENTS
3	OCTOBER 31, 2023 REVISED PER TOWNSHIP COMMENTS
2	OCTOBER 13, 2023 REVISED PER TOWNSHIP COMMENTS
1	AUGUST 18, 2023 REVISED PER NCCD COMMENTS

SOIL EROSION AND SEDIMENTATION CONTROL PLANS

SCALE: 1"=100'
DATE: MAY 24, 2023
CHECKED BY: RRT
DRAWN BY: J.B., J.G.U.
CAD FILE: SE TRIB.dwg
PROJECT NUMBER: 195.2302



GRAPHIC SCALE: 100' 50' 0' 100' 200'

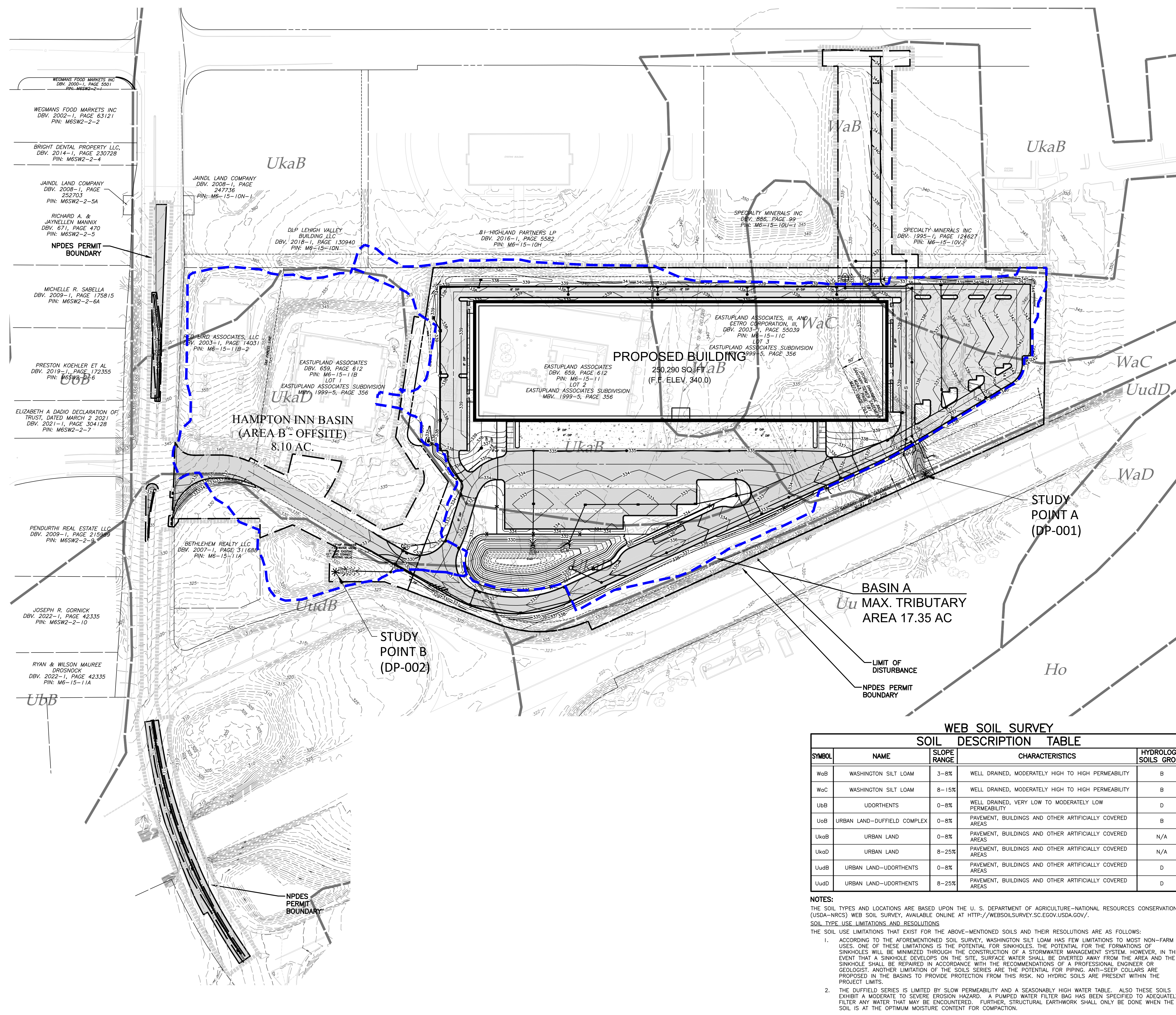
ARCADIA DEVELOPMENT CORPORATION
PROPOSED INDUSTRIAL DEVELOPMENT
HANOVER TOWNSHIP, NORTHAMPTON COUNTY, PENNSYLVANIA

MAXIMUM DURING CONSTRUCTION TRIBUTARY AREA PLAN

FILE NUMBER: S-12290

SHEET NUMBER: 1 OF 1

Not Published; All Rights Reserved by The Pidcock Company



WEB SOIL SURVEY SOIL DESCRIPTION TABLE

SYMBOL	NAME	SLOPE RANGE	CHARACTERISTICS	HYDROLOGIC SOILS GROUP
WgB	WASHINGTON SILT LOAM	3-8%	WELL DRAINED, MODERATELY HIGH TO HIGH PERMEABILITY	B
WgC	WASHINGTON SILT LOAM	8-15%	WELL DRAINED, MODERATELY HIGH TO HIGH PERMEABILITY	B
UdB	UDORTMENTS	0-8%	WELL DRAINED, VERY LOW TO MODERATELY LOW PERMEABILITY	D
UoB	URBAN LAND-DUFFIELD COMPLEX AREAS	0-8%	PAVEMENT, BUILDINGS AND OTHER ARTIFICIALLY COVERED AREAS	B
UkoB	URBAN LAND	0-8%	PAVEMENT, BUILDINGS AND OTHER ARTIFICIALLY COVERED AREAS	N/A
UkoD	URBAN LAND	8-25%	PAVEMENT, BUILDINGS AND OTHER ARTIFICIALLY COVERED AREAS	N/A
UudB	URBAN LAND-UDORTMENTS	0-8%	PAVEMENT, BUILDINGS AND OTHER ARTIFICIALLY COVERED AREAS	D
UudD	URBAN LAND-UDORTMENTS	8-25%	PAVEMENT, BUILDINGS AND OTHER ARTIFICIALLY COVERED AREAS	D

NOTES:
THE SOIL TYPES AND LOCATIONS ARE BASED UPON THE U. S. DEPARTMENT OF AGRICULTURE-NATIONAL RESOURCES CONSERVATION SERVICE (USDA-NRCS) WEB SOIL SURVEY, AVAILABLE ONLINE AT [HTTP://WEBSOILSURVEY.SC.EGOV.USDA.GOV/](http://websoilsurvey.sc.egov.usda.gov/).
SOIL TYPE USE LIMITATIONS AND RESOLUTIONS
THE SOIL USE LIMITATIONS THAT EXIST FOR THE ABOVE-MENTIONED SOILS AND THEIR RESOLUTIONS ARE AS FOLLOWS:
1. ACCORDING TO THE AFOREMENTIONED SOIL SURVEY, WASHINGTON SILT LOAM HAS FEW LIMITATIONS TO MOST NON-FARM USES. ONE OF THESE LIMITATIONS IS THE POTENTIAL FOR SINKHOLES. THE POTENTIAL FOR THE FORMATIONS OF SINKHOLES WILL BE MINIMIZED THROUGH THE CONSTRUCTION OF A STORMWATER MANAGEMENT SYSTEM. HOWEVER, IN THE EVENT THAT A SINKHOLE DEVELOPS ON THE SITE, SURFACE WATER SHALL BE DIVERTED AWAY FROM THE AREA AND THE SINKHOLE SHALL BE REPAIRED IN ACCORDANCE WITH THE RECOMMENDATIONS OF A PROFESSIONAL ENGINEER OR GEOLOGIST. ANOTHER LIMITATION OF THE SOILS SERIES ARE THE POTENTIAL FOR PIPING. ANTI-SEEP COLLARS ARE PROPOSED IN THE BASINS TO PROVIDE PROTECTION FROM THIS RISK. NO HYDRIC SOILS ARE PRESENT WITHIN THE PROJECT LIMITS.
2. THE DUFFIELD SERIES IS LIMITED BY SLOW PERMEABILITY AND A SEASONABLY HIGH WATER TABLE. ALSO THESE SOILS EXHIBIT A MODERATE TO SEVERE EROSION HAZARD. A PUMPED WATER FILTER BAG HAS BEEN SPECIFIED TO ADEQUATELY FILTER ANY WATER THAT MAY BE ENCOUNTERED. FURTHER, STRUCTURAL EARTHWORK SHALL ONLY BE DONE WHEN THE SOIL IS AT THE OPTIMUM MOISTURE CONTENT FOR COMPACTION.

P:\Information\PI-195-12290\195.2302\CA\Chapter 10252-Pidcock.dwg
 Printed: Jan 22, 2024, 2:00pm