



pennsylvania

DEPARTMENT OF ENVIRONMENTAL PROTECTION



Active and Abandoned Mine Operations

Swoyersville Culm Bank Removal and Restoration Project

Project Informational Meeting

December 5, 2018

Tom Wolf, Governor

Patrick McDonnell, Secretary

Meeting Agenda

6:00 PM: Introductions

6:10 PM: Opening Remarks

6:15 PM: Informational Presentations

- PA DEP
- Keystone Reclamation

6:45 PM: Remarks from Federal, State and Local Officials and Project Partners

- Federal Office of Surface Mining, Reclamation and Enforcement
- Eastern PA Coalition for Abandoned Mine Reclamation
- State Officials
- Local Officials

7:00 PM - Question and Answer Session with Local Residents

Swoyersville Culm Bank



Site Background

- The Swoyersville Culm Bank is an abandoned coal refuse pile and associated coal silt basins from the Harry E Colliery and Coal Breaker that ceased operations in the 1970s and is located just off of Main Street in Swoyersville.
- The entire Swoyersville refuse site encompasses approximately 55 acres and contains approximately 4 million tons of coal refuse (culm) and waste rock material.

Swoyersville Culm Bank Removal and Restoration Project



Site Background

- Approximately 2.8 million tons of the refuse material is anticipated to be usable as fuel for electric cogeneration facilities that utilize waste coal.
- The land is owned by Pagnotti Enterprises, Inc. of Wilkes-Barre

Project Details

- The work to be undertaken involves the removal of 500,000 tons of coal and rock waste from 24.75-acres of the former Harry E Breaker site and reclamation of the associated acreage.
- The project has been authorized through a Government Financed Construction Contract (GFCC) issued by the Pottsville District Mining Office.

Project Details

GFCC Project Site Specific Condition

- There shall be no point source discharge of water, either precipitation based runoff or groundwater, originating from the area(s) authorized by this permit. In the event of a point source discharge, the Permittee shall notify the Department's Surface Mine Conservation Inspector or the Pottsville District Mining Office within 24 hours of the discharge. Within five (5) days of said notification, the Permittee shall submit to the Pottsville District Mining Office documentation describing the discharge event including but not limited to; location, cause, source, date, time, duration, and sample results of the discharge, and any temporary/permanent corrective measures taken or needed to prevent a future discharge. In the event that site condition or future operations generate the need for a point source discharge, the Permittee shall contact the Pottsville District Mining Office and submit a new or revised Individual or General NPDES Storm Water Permit Application to the Department for review and approval prior to any new point source discharge from authorized and affected areas of this permit.

Project Details

- NPDES for Storm Water General Permit No. PAM118004 is hereby issued in conjunction with the execution of this Government Financed Construction Contract No. 40-18-01. The following additional conditions shall apply to the control of all storm water runoff from the site:
 - Only areas necessary for construction of erosion and sediment pollution controls and other associated items may be disturbed prior to installation of the necessary controls in any area.
 - Any area which is disturbed during this operation shall be stabilized within three (3) weeks of the most recent earthmoving activity in that area, or as soon as weather or seasonal constraints permit. Individual erosion and sediment pollution controls must be maintained until the areas draining to each control are permanently stabilized.
 - Minor field adjustments or additions to the permitted erosion and sediment pollution control plan of the proposal shall be made as necessary to insure that runoff from all affected, unstabilized areas passes through an adequate erosion and sediment pollution control device prior to exiting the site; runoff from off-site, unaffected areas is properly diverted around or through the site without coming in contact with sediment-laden, on-site runoff and; drainage areas to controls or other facilities as designed are maintained.
 - The contractor shall install and maintain adequate, stable, site entrances to eliminate deposition of material onto the public right-of-way.
 - Upon construction of the proposed erosion and sediment pollution controls and prior to commencing mining and/or other related or preparatory activities on the contract area, a site meeting shall be held including but not limited to, the Department's Surface Mining Conservation Inspector and a representative of the contractor directly responsible for activities on this site in order to review the controls and all necessary operational and maintenance requirements.
 - Additional sediment traps shall be added to efficiently control sediment laden runoff as reclamation proceeds through the site.

Project Details

GP-12 Air Quality Approval Conditions

- Any storage silos on site used for the stockpiling of thermally dried coal shall be equipped with a bin vent fabric collector. (N/A)
- All rotary breakers and crushers shall be enclosed. (N/A)
- Front-end loaders may be used for loading/unloading of coal. All front end loaders used to stockpile, transfer and load coal shall maintain a minimal amount of drop height from the front end loader at all times.
- Plant roadways shall be delineated by paving or by periodic chipping.
- All trucks must be tarped and a notice of tarping requirements clearly posted on site.
- The permittee shall conduct upwind/downwind dustfall monitoring at the request of the Department.
- The permittee shall post speed limit signs on all in plant roads limiting speeds to 15 mph.
- For sites with pneumatic coal cleaning devices-air tables/air jigs any discharge into the atmosphere from any pneumatic coal cleaning equipment shall be limited to 0.018 gr/dscf and less than 10% opacity as required in 40 CFR §60.252. Installation of a properly designed and operated baghouse on the source shall be adequate demonstration of compliance with this condition. If there is any evidence to the contrary as determined by the Department, the permittee may be required to conduct additional performance tests using Methods 5 and 9 as required in 40 CFR §60.254.

Project Details

- The estimated cost of the project is \$12 million split between industry and the AML Pilot Program.
- \$4 million of the GFCC project cost is funded through a combination of AML Pilot Program funding and other AML funding.
- The remaining \$8 million of the total project cost is coming from Olympus Power.

AML Pilot Program Background

- The 2017 AML Pilot Program was authorized by Congress under the Consolidated Appropriations Act, 2017 (Public Law 115-31) and provides an additional \$25 million of US Treasury Funds to PA's AML Program
- The funds are to be used “for the reclamation of abandoned mine lands in conjunction with economic revitalization and community development and reuse goals”

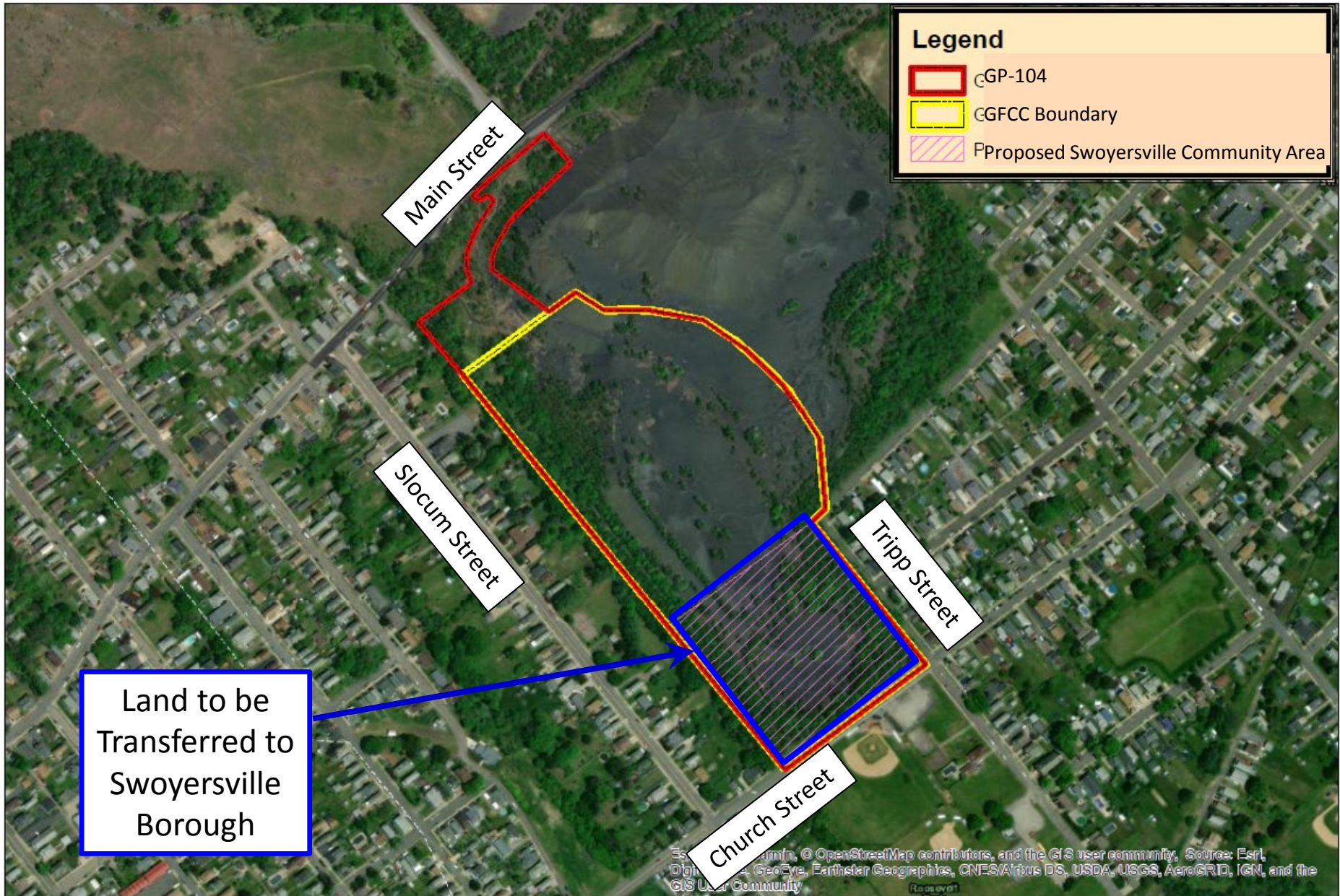
Project Details

- For this project, the DEP entered into a contract with EPCAMR to provide \$4 million comprised of a combination of AML Pilot funding and other AML Program funding to facilitate the project.
- The work outlined in the contract between DEP and EPCAMR must be completed by October 31, 2020 and includes transfer of the property to Swoyersville Borough.

Project Details

- For this project, the overall work area is 27.8 acres which includes the GFCC area, the required access area, support areas, and the required erosion and sedimentation controls.
- As reclamation of the site proceeds, approximately 7 acres of the reclaimed area will be transferred to Swoyersville Borough in 2020 for the development of community recreational facilities.

Swoyersville Refuse Pile



Legend

- GP-104
- CGFCC Boundary
- Proposed Swoyersville Community Area

Land to be Transferred to Swoyersville Borough

Swoyersville Culm Bank Removal and Restoration Project



Project Details

- The material will be processed and removed from the site by the use of excavating equipment and trucks
- This project will eliminate a significant portion of the large coal waste pile on the site and provide for future redevelopment of the land.

Project Details

- The work on the project is scheduled to begin in December 2018.
- The general contractor for the removal of the coal refuse material is Keystone Reclamation Fuel Management, LLC, a subsidiary of Olympus Power, LLC owner of the Panther Creek Power and Northampton Generation facilities.

Project Details

Time Trial Analysis (13 min/day)

- Keystone intends to strategically manage inbound and outbound traffic to minimize the impact throughout the day.
 - Morning and evening traffic can be diverted as needed.
- Potential routes inbound and outbound from SR1010:
 - Slocum St. into Forty Fort to Wyoming Ave. to Wells St. to Cross Valley Expressway (Rt. 309) (Primary Route)
 - Main St. to Dennison St. to Wyoming Ave. to River St. (Forty Fort) Cross Valley Expressway (Alternate/Secondary Route)
 - Slocum St. to Wyoming Ave. to River St. (Forty Fort) to Rutter Ave. to Cross Valley Expressway (Alternate/Secondary Route)
 - Slocum St. to Chapel St to Main St in Luzerne to Union St. to Cross Valley Expressway (Alternate/Secondary Route)

Project Details

Typical Truck Schedule (weather dependent)

- Trucks loaded after approximately 7am
- Trucks exit Swoyersville GFCC site by approximately 8:30am
- Trucks return at approximately 10:30am and are loaded
- Trucks exit and return 2 to 4 times and cease operation by approximately 3pm

Project Details

Substantial Concerns That Have Been Addressed:

- Trucks entering and exiting property
 - Policing of trucking
 - Restrictions on truck idling before 7am and after 3pm
 - Trucks will be properly tarped
 - Site has contingency to install truck wash if needed, or add pavement (200 feet to be installed at minimum before start of project)
- Truck speed within the Borough
 - Keystone will self regulate and require the trucks not to exceed 25 mph.
 - Keystone will work with the Borough Police Department to enforce the self imposed speed.
- Equipment and Truck Specifications
 - Modern Equipment and Smaller Triaxle Trucks
 - Opted to not utilize tractor trailers units with a GVW allowable limit of 80,000 lb.
 - Also opted not to utilize these trucks on the state routes in Swoyersville due to their size.

Project Benefits

- Keystone Reclamation Fuel Management, LLC has long range plans to reclaim the entire Swoyersville coal refuse pile which would ultimately restore the entire 55 acre site.
- Once completed, the area could then be used for residential / industrial / commercial / or recreational development within Swoyersville Borough.

Project Benefits

- The overall project will also help to improve water quality in the Abrahams Creek Watershed and reduce flooding by restoring/improving areas of floodplain along Abrahams Creek.
- The proposed community recreational facilities will also provide for recreational opportunities for all residents of Swoyersville and the surrounding area.

Project Benefits

Other benefits from removal of refuse pile:

- Elimination of fugitive dust
- Elimination of fire risk and related harmful air emissions
- Enhancement to human health and safety due to elimination of the “attractive nuisance”

Swoyersville Culm Bank Removal and Restoration Project



Project Benefits

- According to a watershed study completed by EPCAMR, the overall project should help to improve water quality in the Abrahams Creek Watershed and reduce flooding by restoring/improving areas of floodplain along Abrahams Creek.
- The proposed community recreational facilities will provide for recreational opportunities for the residents of Swoyersville and the surrounding communities.

Project Benefits

- 7 acres of developable recreation property for Swoyersville Borough
- Reclamation of high-priority AML features
- Removal of the coal waste should decrease acid mine drainage laden runoff from the site
- Development of the sports complex will draw more people to the Borough and surrounding area to positively impact the community
- Ability for the Borough to host multiple sports activities for different organizations at the same time
- Addition of new usable land zoned for residential, commercial or industrial use should enhance Borough tax base

Ehrenfeld Coal Refuse Pile Reclamation Cambria County



Ehrenfeld Coal Refuse Pile



Ehrenfeld Construction



Ehrenfeld Construction



11.30.2017 14:45

Ehrenfeld Construction



Ehrenfeld Construction



Ehrenfeld Reclamation Benefits

- Restoration of 62 acres of barren undevelopable land situated in Ehrenfeld Borough and Croyle Township
- Recreational development through construction of a parking area to access the Johnstown Flood Memorial Rails to Trails
- Possible future industrial development
- Water Quality Improvement /Watershed Restoration
- Land Restoration including re-establishment of the American Chestnut

Simpson Northeast Coal Refuse Fire Lackawanna County



Simpson Northeast Coal Refuse Fire



Simpson Northeast Reclamation



Simpson Northeast Reclamation



Simpson Northeast Reclamation



Simpson Northeast Reclamation



Simpson Northeast Project Summary

Response Timeline:

Notification Received: December 15, 2013

ATP Requested: December 24, 2013

ATP Issued: January 3, 2014

Construction Started: January 20, 2014

Construction Completed: May 28, 2014

Construction Duration: 129 Calendar Days

Reclamation Method: Contract

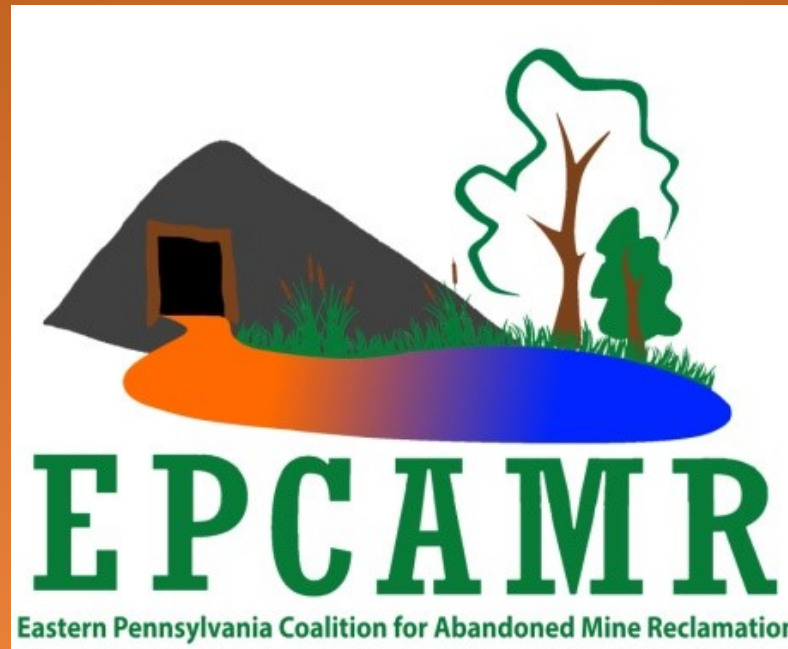
Project Cost: \$2,213,477.80

Funding: Abandoned Mine Reclamation Fund

02.28.2014

Project Partners

- Keystone Reclamation Fuel Management LLC (Panther Creek Power/Northampton Generation)
- Eastern PA Coalition for Abandoned Mine Reclamation (EPCAMR)
- Swoyersville Borough
- Pagnotti Enterprises Inc.
- Foundation for PA Watersheds
- Office of Surface Mining Reclamation and Enforcement
- PA Department of Environmental Protection



Web Page for Public Information on the Swoyersville Culm Bank Removal and Restoration PA Abandoned Mine Land Pilot Project

<http://epcamr.org/home/current-initiatives/funding-project-management/swoyersville-culm-pile-removal-aml-pilot-project/>

Swoyersville Culm Bank Removal and Restoration Project

