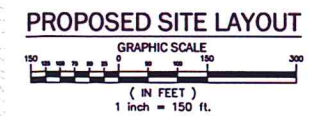
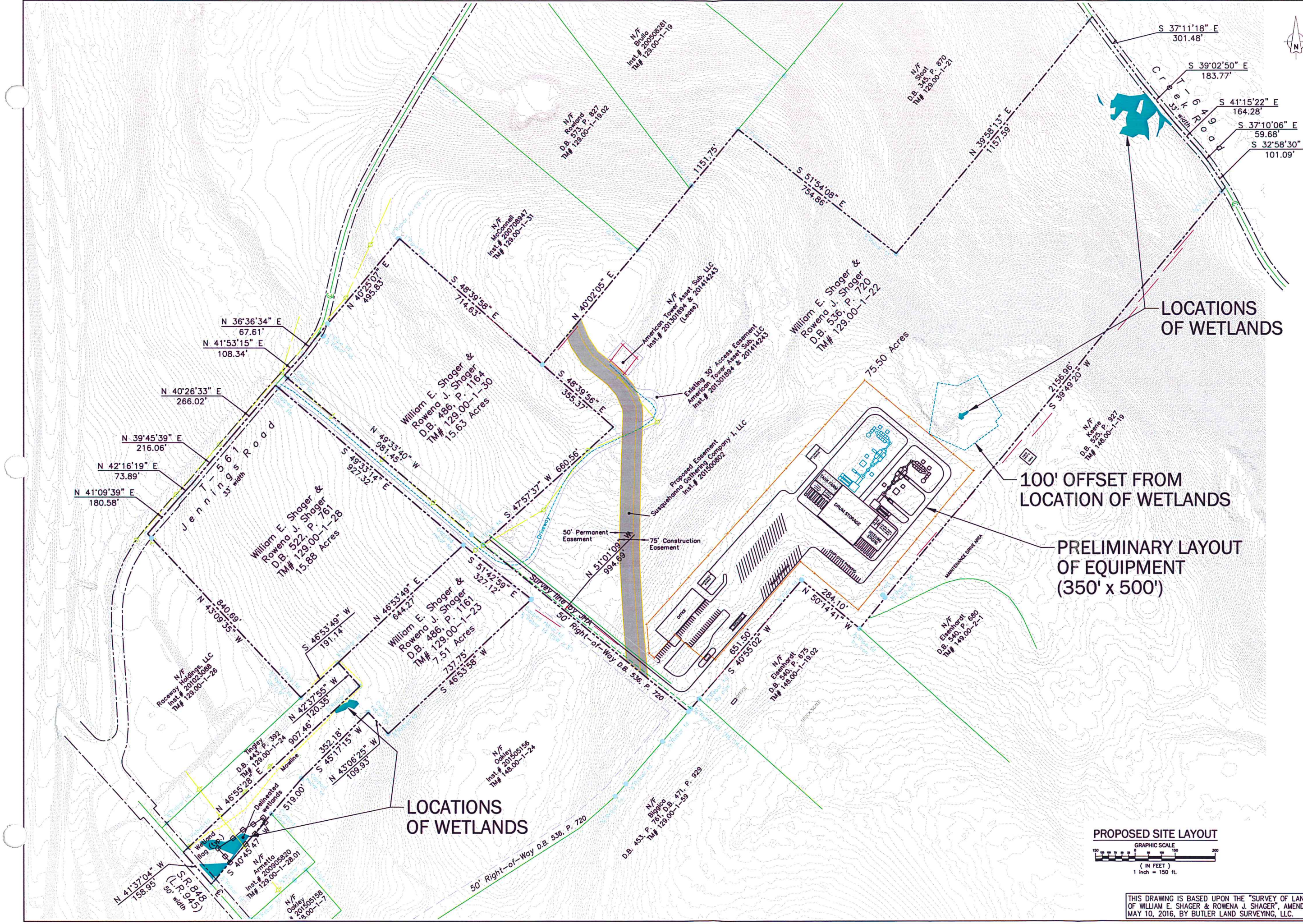


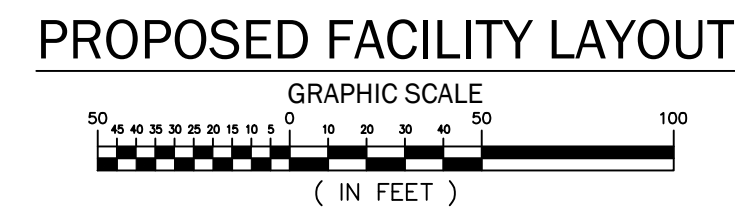
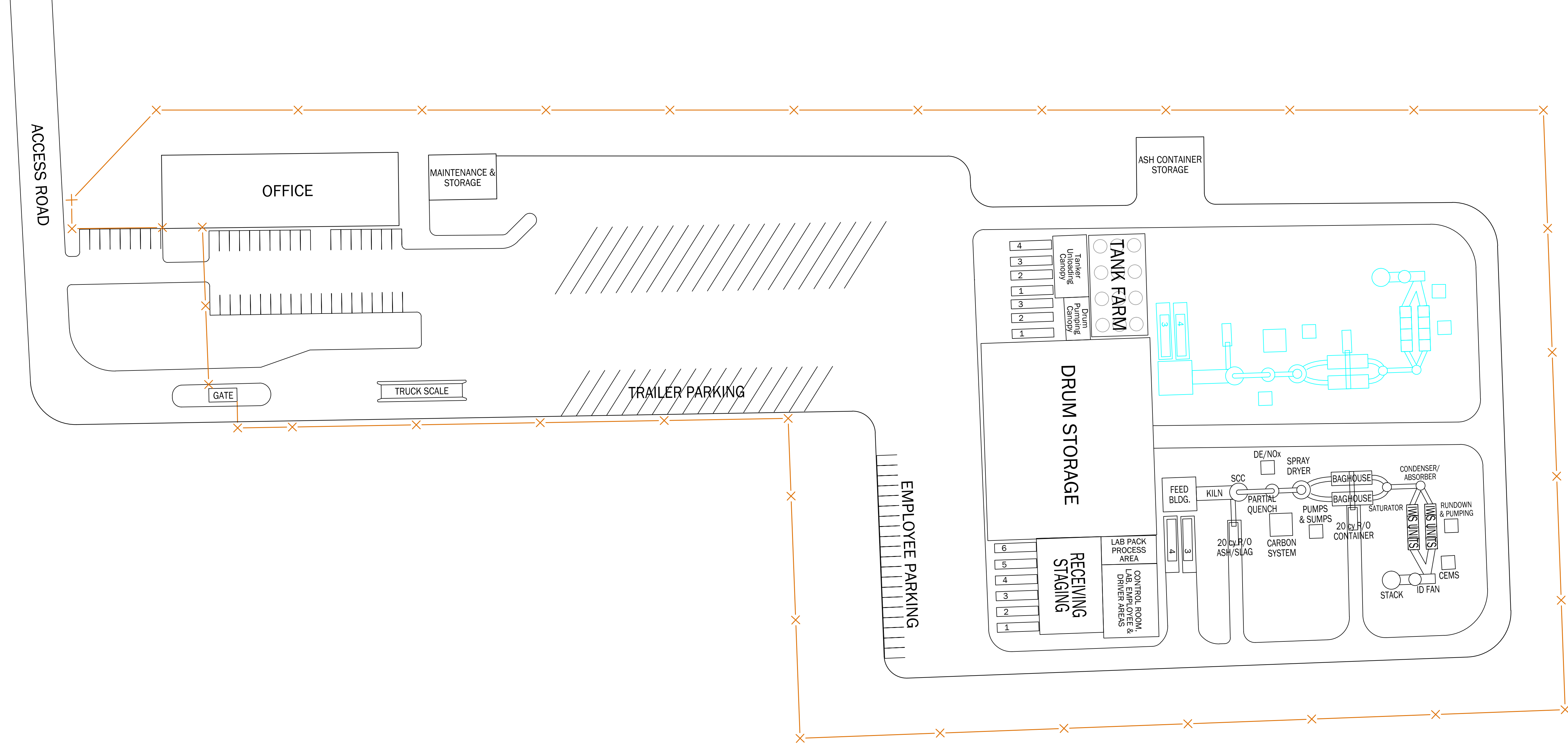
**Exhibit 2**

*Scaled Map of Proposed Facility*



THIS DRAWING IS BASED UPON THE "SURVEY OF LANDS OF WILLIAM E. SHAGER & ROWENA J. SHAGER", AMENDED MAY 10, 2016, BY BUTLER LAND SURVEYING, LLC.

<b>COMPLIANCE PLUS SERVICES, INC.</b> 455 BUSINESS CENTER DRIVE SUITE 250 HATBORO, PA 19040 PHONE (215) 734-1414 * FAX (215) 734-1424 <a href="http://www.CPS-2Comply.com">www.CPS-2Comply.com</a>		Project No. 0324-03 Scale 1 inch = 150 feet Approved By Bradley J. Cunningham, P.E. Drawn By Rick Gradwell	Date 09/13/2016	Description PROPOSED SITE LAYOUT Tyler Corners, L.P. 20 Jennings Road New Milford, Pennsylvania 18834
---	--	---	--------------------	---



**PROPOSED FACILITY LAYOUT**  
 Tyler Corners, L.P.  
 20 Jennings Road  
 New Milford, Pennsylvania 18834

Dwg. No. **PSL-02** Date: 10/28/2016

**COMPLIANCE PLUS SERVICES, INC.**  
 455 BUSINESS CENTER DRIVE  
 SUITE 250  
 HATBORO, PA 19040  
 PHONE: (215) 734-1414 \* FAX: (215) 734-1424  
[www.CPS-2Comply.com](http://www.CPS-2Comply.com)



Project No. 0324-03  
 Scale: As Noted  
 Approved By: Bradley J. Cunningham, P.E.  
 Drawn By: Rick Gradwell

Rev. No.	Date	By	Description

Seal: Bradley J. Cunningham, P.E.  
 P.A. License No. PC048279E