



Jeansville Mine Fire Briefing

Colleen Connolly
Environmental Community Relations Specialist
Department of Environmental Protection
Northeast Regional Office (NERO)

May 20, 2015

Fire Location



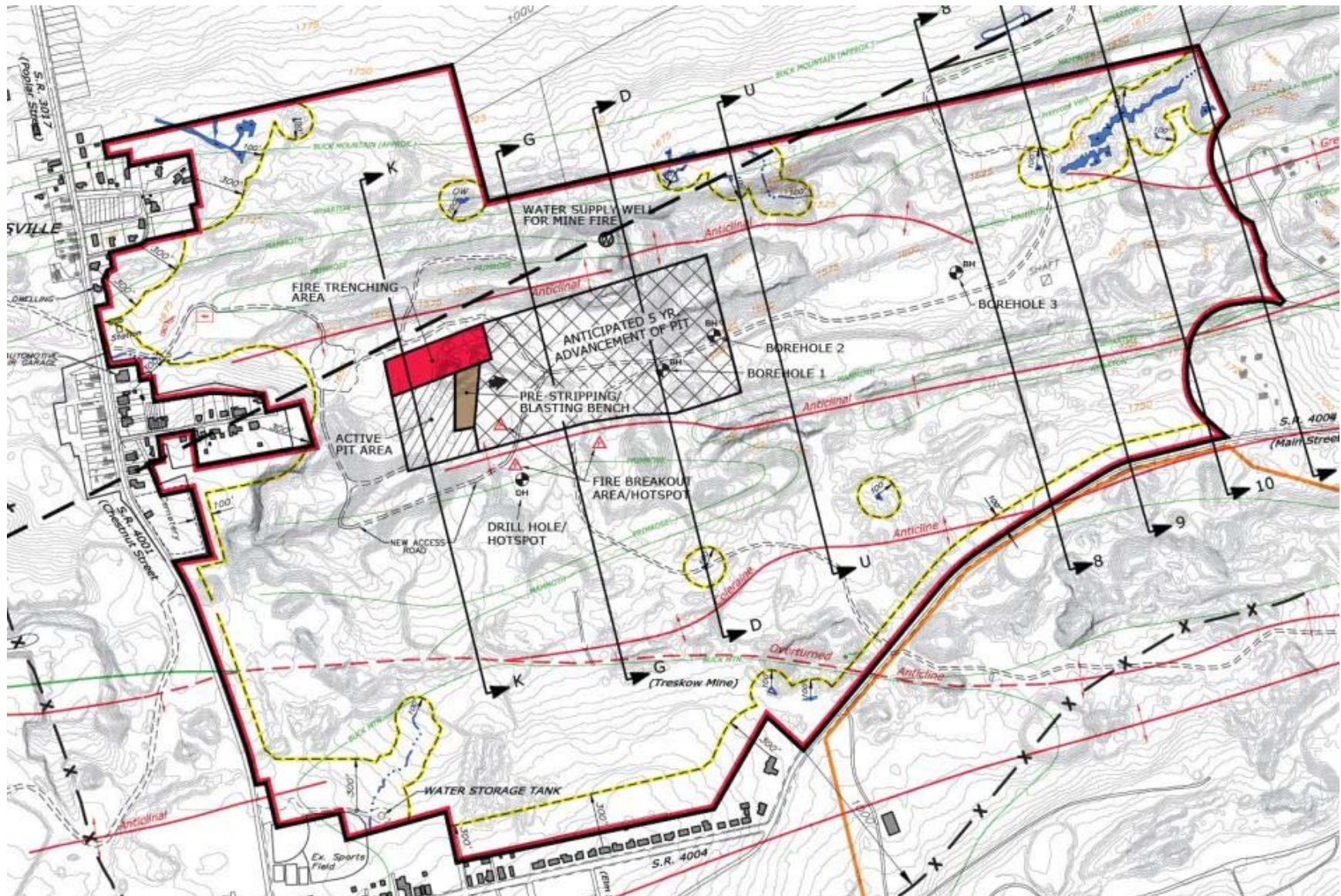
Timeline

- The original Surface Mine Permit (SMP) was issued in 1974
- The site was re-permitted in 1986
- The current SMP includes 964 acres in Hazle and Banks townships
- The current permittee is Pagnotti Enterprises, Inc.
- The landowner is Lehigh Valley Anthracite/
Pagnotti Enterprises

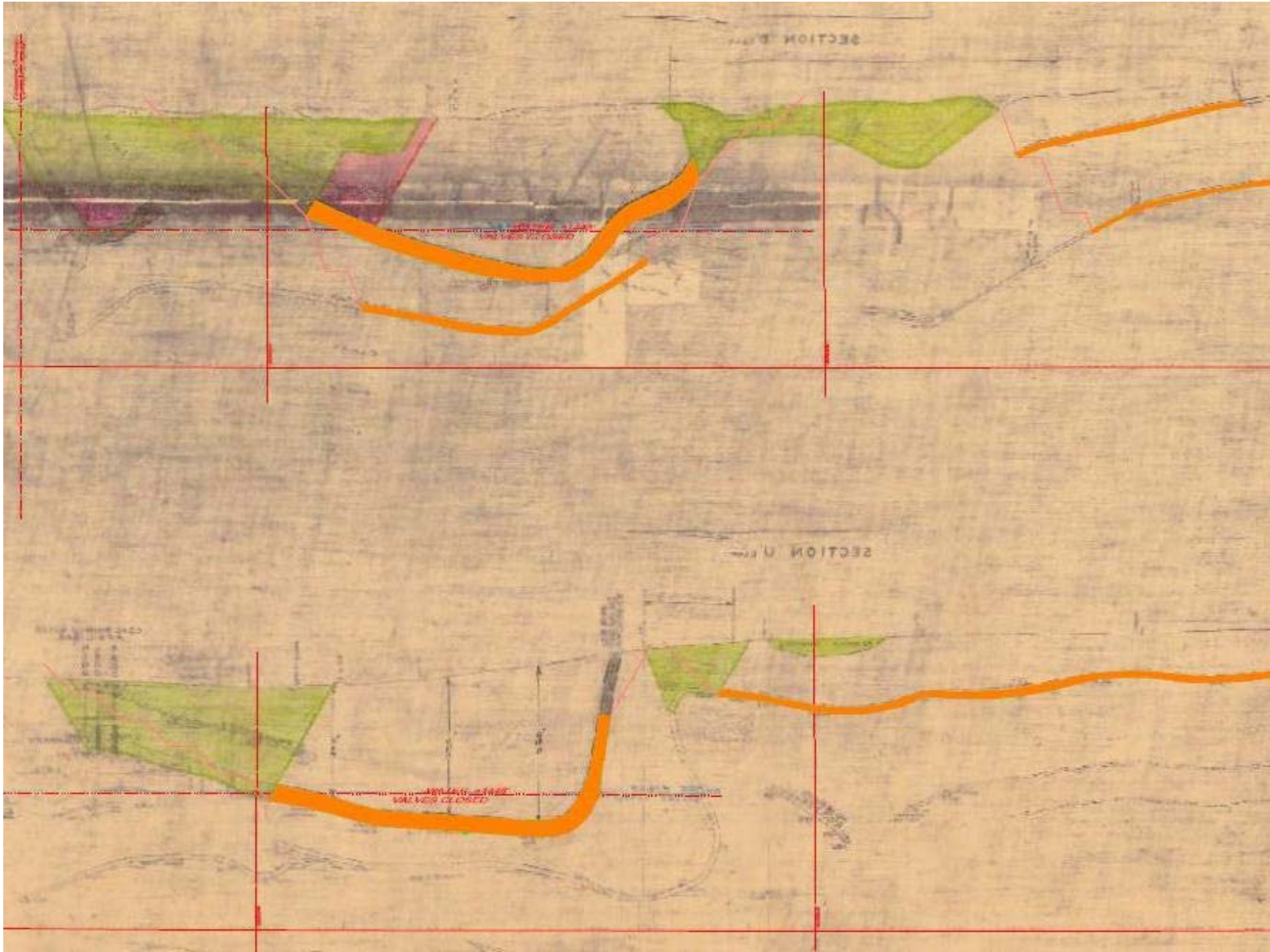
Timeline

- There are currently two active mining operations on the Pagnotti SMP:
 1. Wet Slope Operation on the west side of SR 3017/ SR 4001 (operated by Latona Mining)
 2. Jeansville Operation on the east side of SR 3017/ SR 4001 (operated by Hazleton Shaft Corporation)
- No. 1 Contracting Corp. previously operated a strip mine on the east side of SR 3017/SR 4001 on Pagnotti property until about 2011, this operation was backfilled by Hazleton Shaft Corp. in conjunction with their new operation

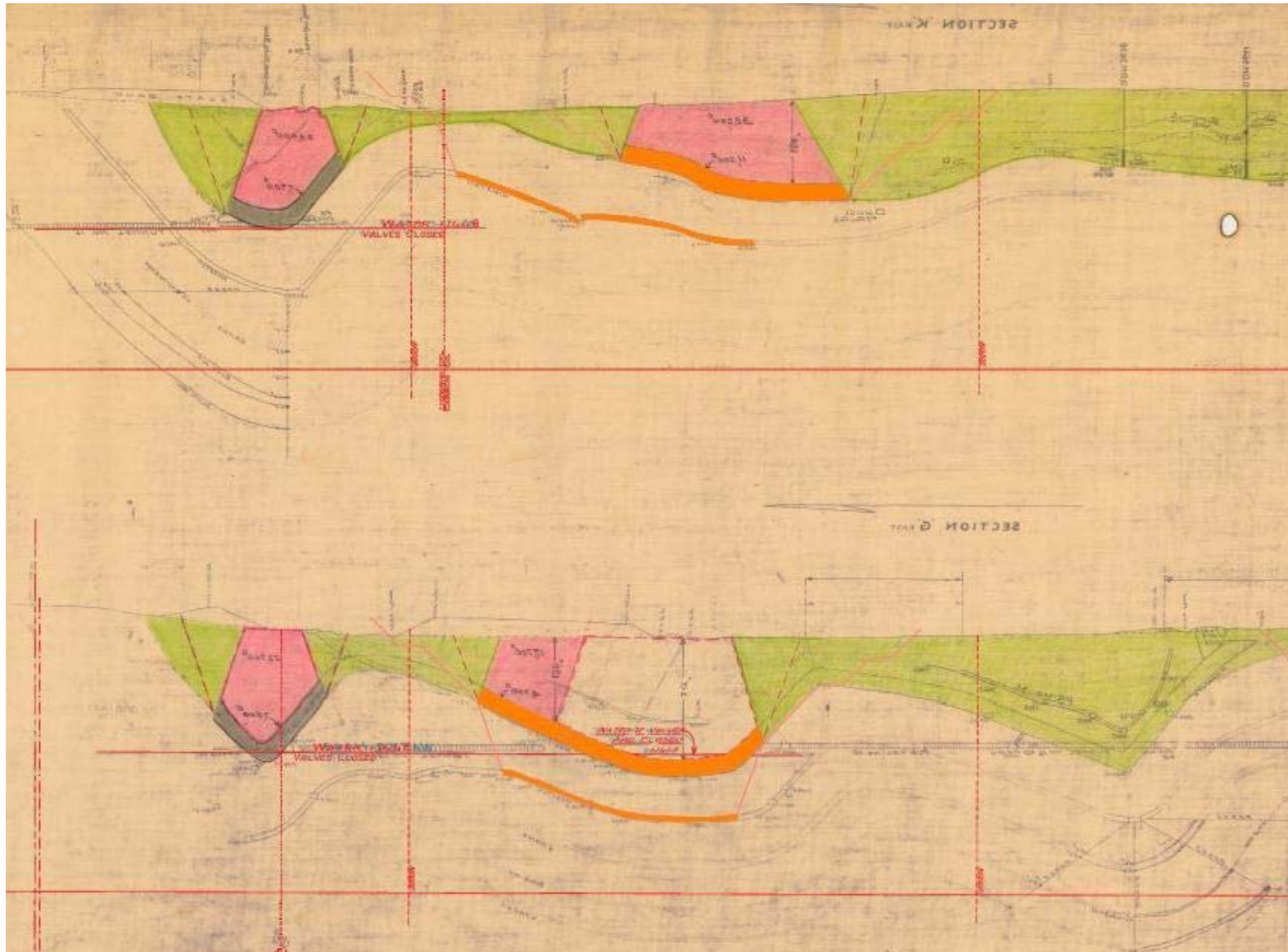
Hazleton Shaft Corporation Jeansville Mine



▶ Cross Sections D & U (Looking East)



▶ Cross Sections K & G (Looking East)



Timeline

- The current Jeansville Mine operation began in spring 2011; mining began fall/winter 2011
- The fire was first noticed in early 2012 as mining progressed eastward from the pre-Act pit adjacent to southwest edge of Jeansville
- Initially, the mine fire was thought to be in the coal silt/old pit area near the north edge of the pre-Act pit, but venting was also noted along the south edge of the proposed mining area

Timeline

- Previous mining to the south of the active pit area was reviewed at that time and available information indicated that much of the upper coal seams were removed by past mining
- As Hazleton Shaft Corp. continued to mine and excavate the mine fire, it became clear that the fire was not isolated to one small area





Lat: 40° 55' 31.17" N Lon: 75° 57' 46.69" W



Timeline

- Part of the fire appears to be off the area of the SMP area Hazleton Shaft Corp. is mining
- District Mining contacted the Bureau of Abandoned Mine Reclamation (BAMR) to help develop a plan to evaluate what could and should be done to address the mine fire
- BAMR hired Kaufman Engineers of Olyphant to conduct a flyover and take a thermal image of the site (flown May 15)

Timeline

- BAMR is in process of hiring a contractor to drill the site to determine the extent of the fire and to monitor any movement of the fire
- Hazleton Shaft Corporation has three boreholes drilled to the east and north of the site that can monitor temperature and mine pool elevation
- Recent monitoring of those shows no sign of fire in those boreholes

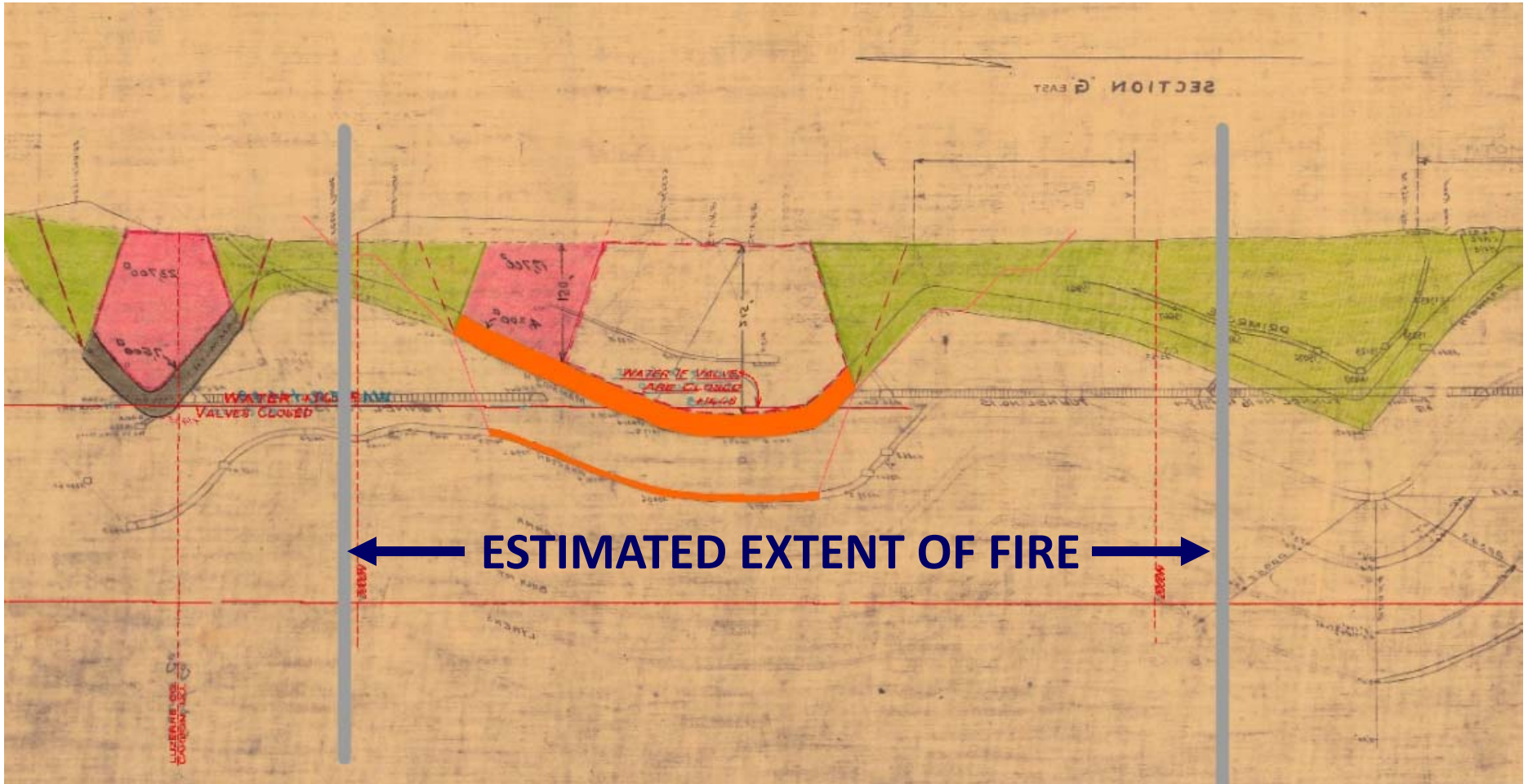








Fire Located on Section G



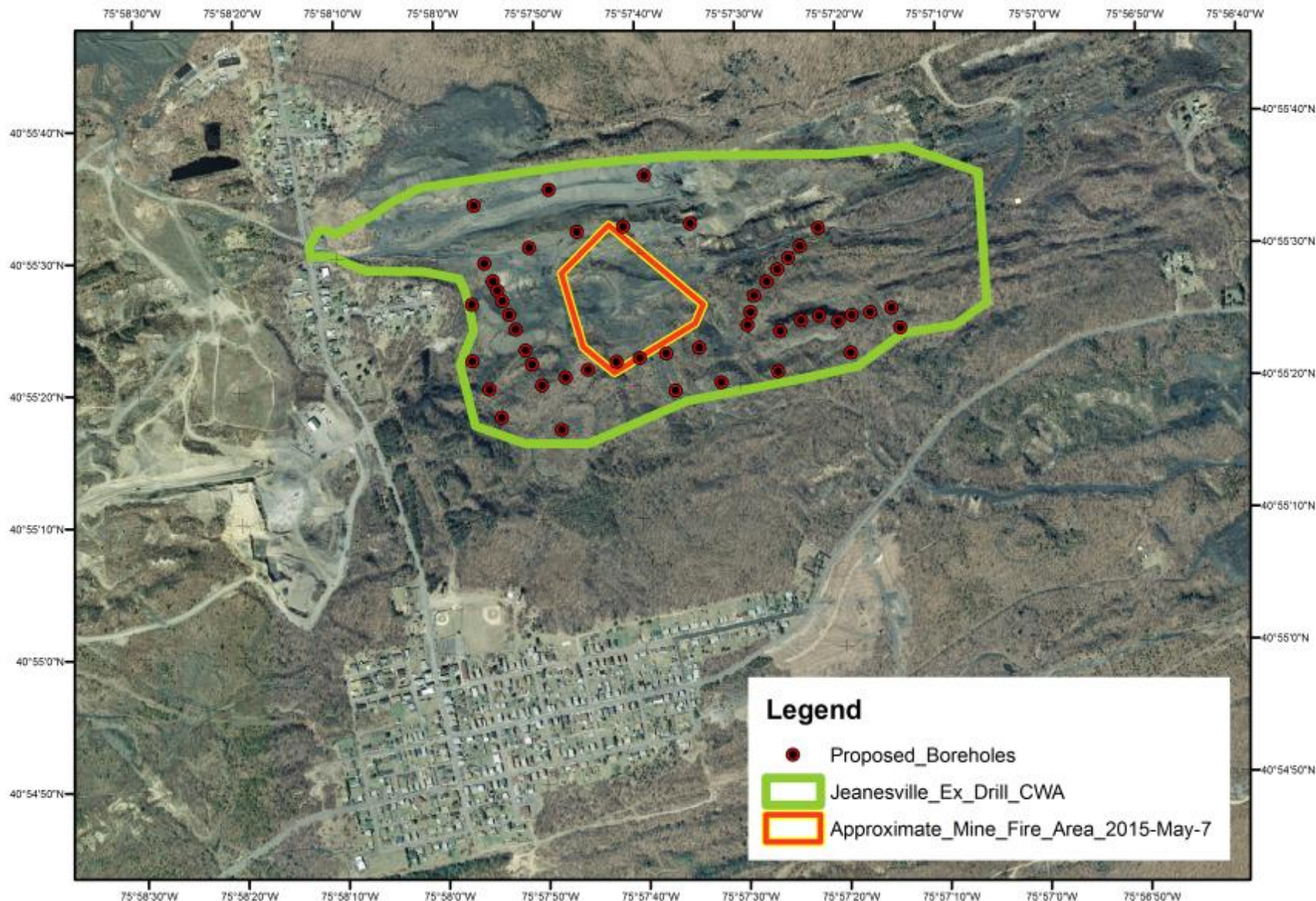
Timeline

- Hazleton Shaft Corporation is and will continue to monitor gas and oxygen levels in the active mining area per the federal Mine Safety and Health Administration requirements to ensure safety for employees
- BAMR and the drilling contractor will monitor gas and oxygen levels in the contractor's work area

Timeline

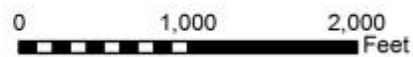
- DEP Northeast Regional Office Air Quality will monitor gas and oxygen levels in the surrounding communities on a regular basis
- Hazleton Shaft Corp proposes to excavate and extinguish the mine fire within the limits of their proposed mining area, as that mining progresses eastward
- BAMR will evaluate the thermal imaging and drilling results to determine next steps

Jeanesville Mine Fire Exploratory Drilling



Legend

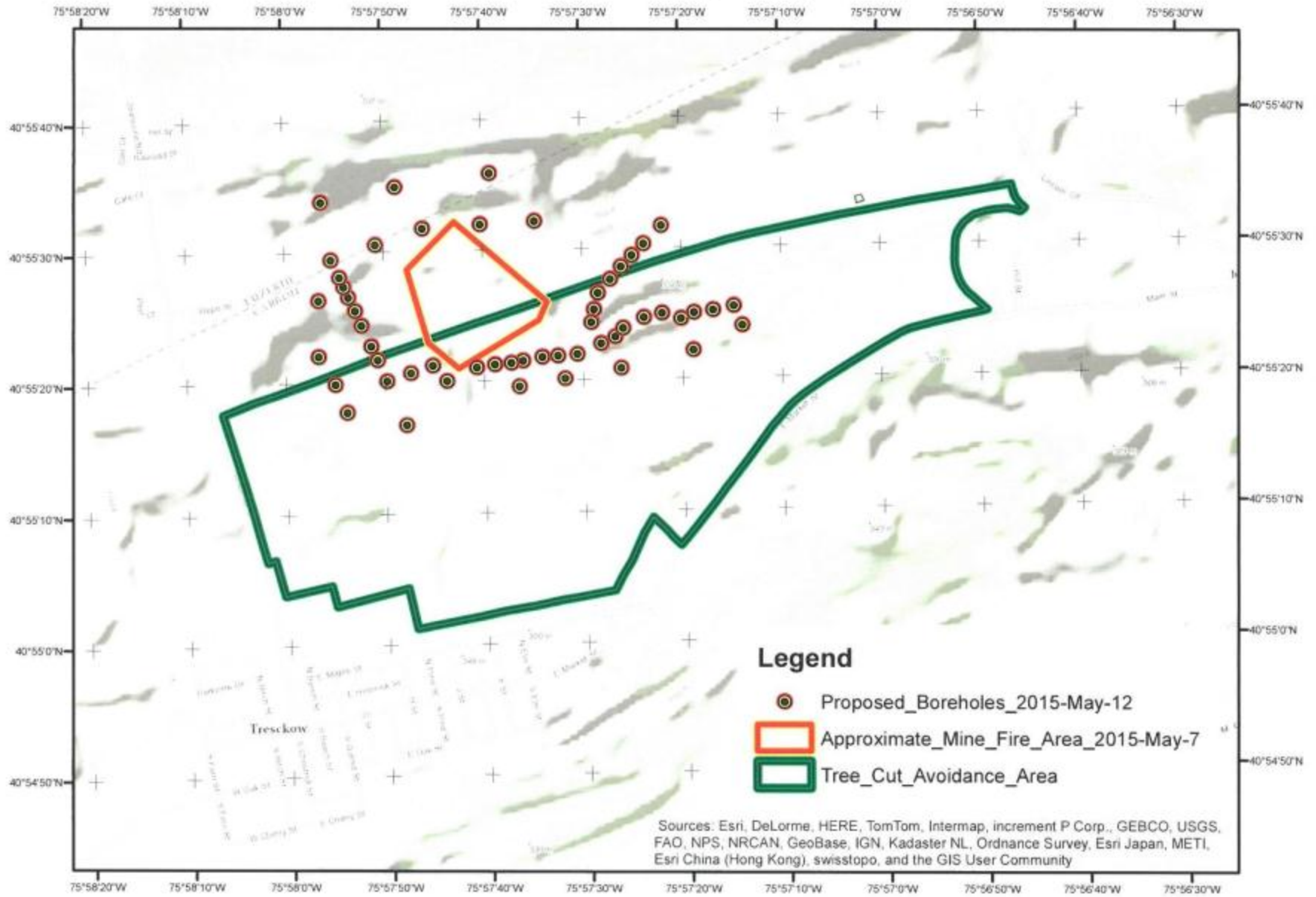
- Proposed_Boreholes
- Jeanesville_Ex_Drill_CWA
- Approximate_Mine_Fire_Area_2015-May-7



Coordinate System: NAD 1983 StatePlane Pennsylvania North FIPS 3701 Feet
Base Map: PAMAP Cycle 2



Jeanesville Mine Fire Exploratory Drilling



0 1,000 2,000 Feet

Coordinate System: NAD 1983 StatePlane Pennsylvania North FIPS 3701 Feet



Air Quality Monitoring

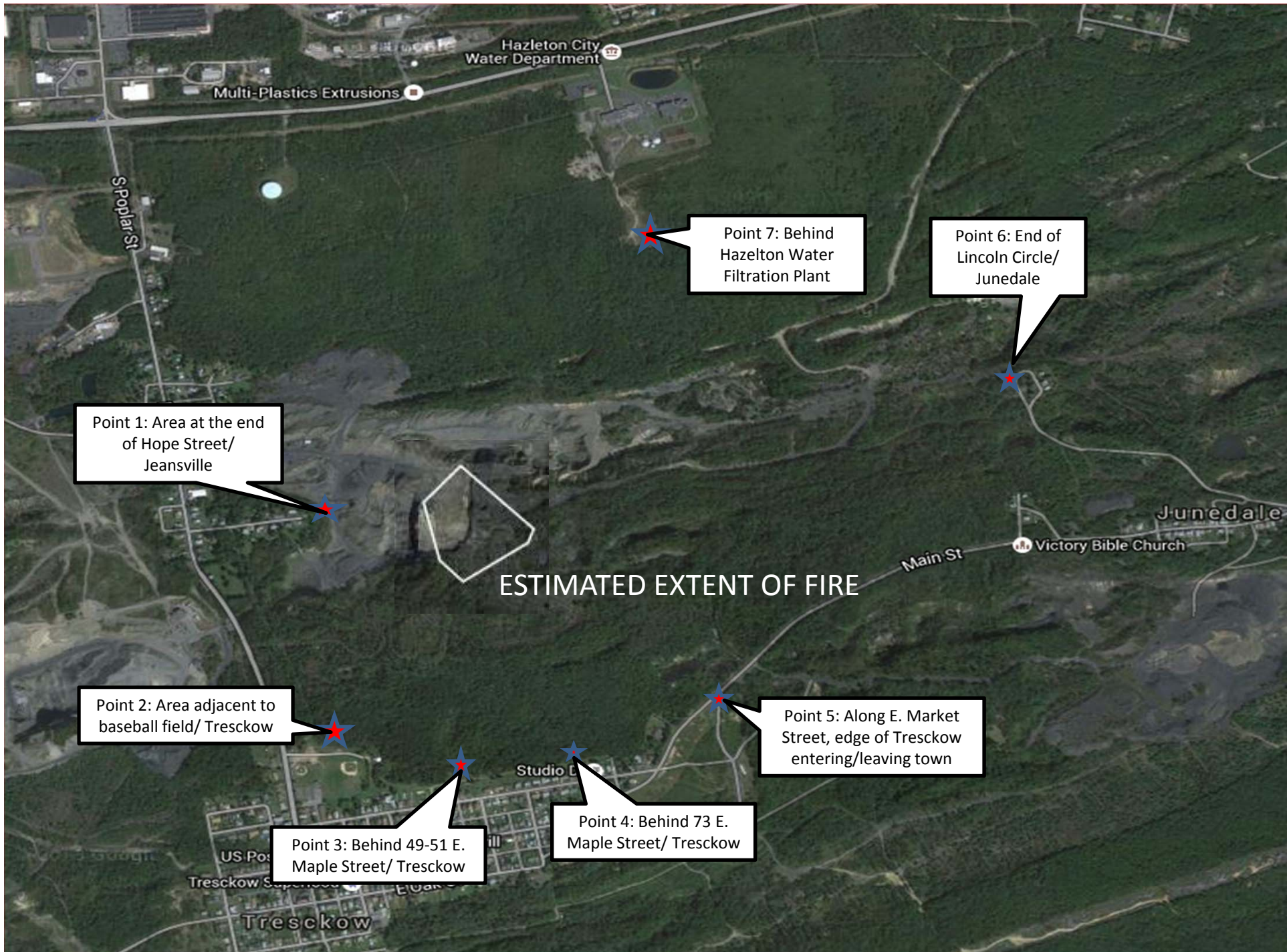


POINT 1 (LOCATED ALONG THE EDGE OF HOPE ST.), JEANSVILLE, HAZLE TWP., LUZERNE CO.

Air Quality Monitoring



POINT 5 (LOCATED ALONG E. MARKET ST/SE SECTION OF TRESCKOW.), TRESCKOW, BANKS TWP., CARBON CO.



ESTIMATED EXTENT OF FIRE

Point 1: Area at the end of Hope Street/Jeansville

Point 7: Behind Hazleton Water Filtration Plant

Point 6: End of Lincoln Circle/Junedale

Point 2: Area adjacent to baseball field/Tresckow

Point 5: Along E. Market Street, edge of Tresckow entering/leaving town

Point 3: Behind 49-51 E. Maple Street/Tresckow

Point 4: Behind 73 E. Maple Street/Tresckow

Multi-Plastics Extrusions
Hazleton City Water Department

S Poplar St

Main St

Junedale

Victory Bible Church

Studio E

US Post

Tresckow Super

Tresckow



Mike Menghini, Pottsville District Mining Manager

570-621-3118 mmenghini@pa.gov

Mike Korb, Environmental Program Manager, WB BAMR

570-826-2371 mkorb@pa.gov

Eric Cavazza, Bureau Director, BAMR

814-472-1800 ecavazza@pa.gov

Jean Grabowski, Air Quality Environmental Group Manager, NERO

570-826-2511 jegrabowsk@pa.gov

Colleen Connolly, Community Relations Specialist, NERO

570-826-2511 coconnolly@pa.gov