


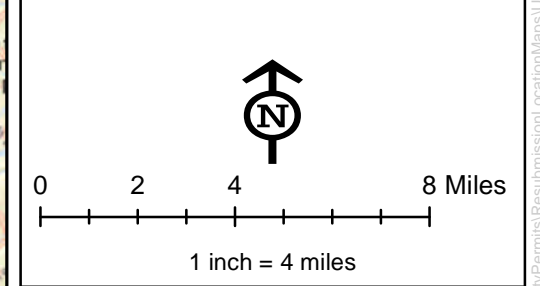


- Legend**
-  Proposed Centerline
  -  County Boundary
  -  State Boundary



**Project Location Sheet Key for the Sunoco Pennsylvania Pipeline Project, Berks County, PA.**

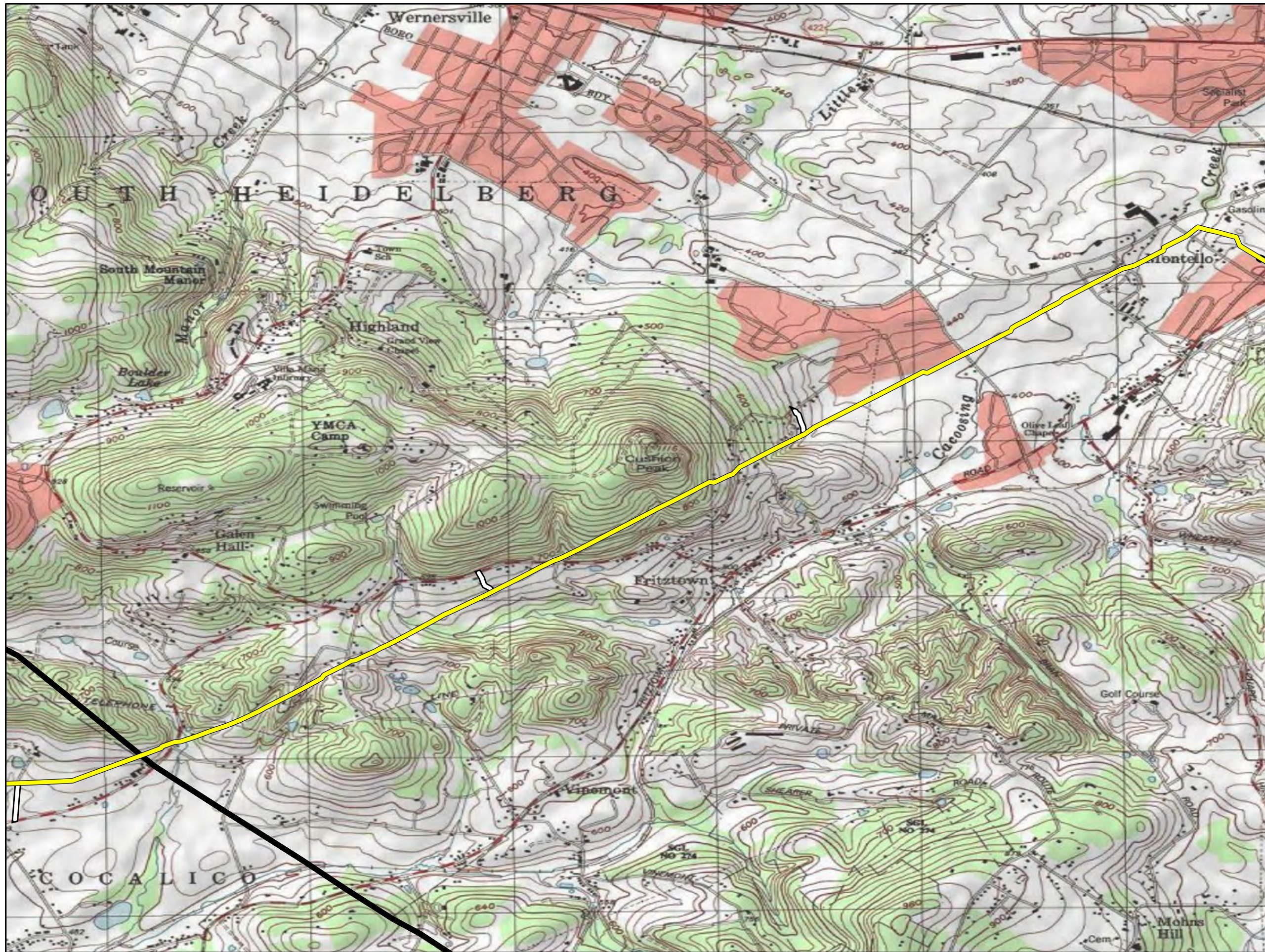
Prepared By:  TETRA TECH







Prepared for:  Sunoco Logistics

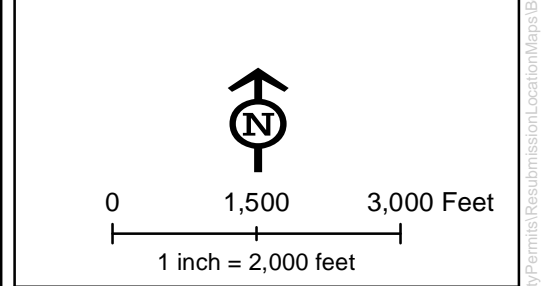
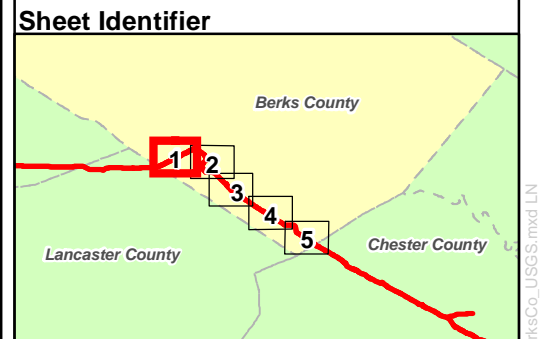
Base Map: ESRI ArcGIS Online  
 Coordinate System: NAD 83 UTM 17N  
 Date: **03/2016**

P:\GIS\Projects\17205566-PPP\MapXDR\Permits\Resubmission\Location\Maps\USGS\_S\_SheerKey.mxd LN





- Legend**
-  Proposed Centerline
  -  ROW - Permanent Access Road
  -  ROW - Temporary Access Road
  -  Pump Station LOD
  -  County Boundary
  -  State Boundary



**Figure 1. Project Location for the Sunoco Pennsylvania Pipeline Project, Berks County, PA. Sheet 1 of 5**

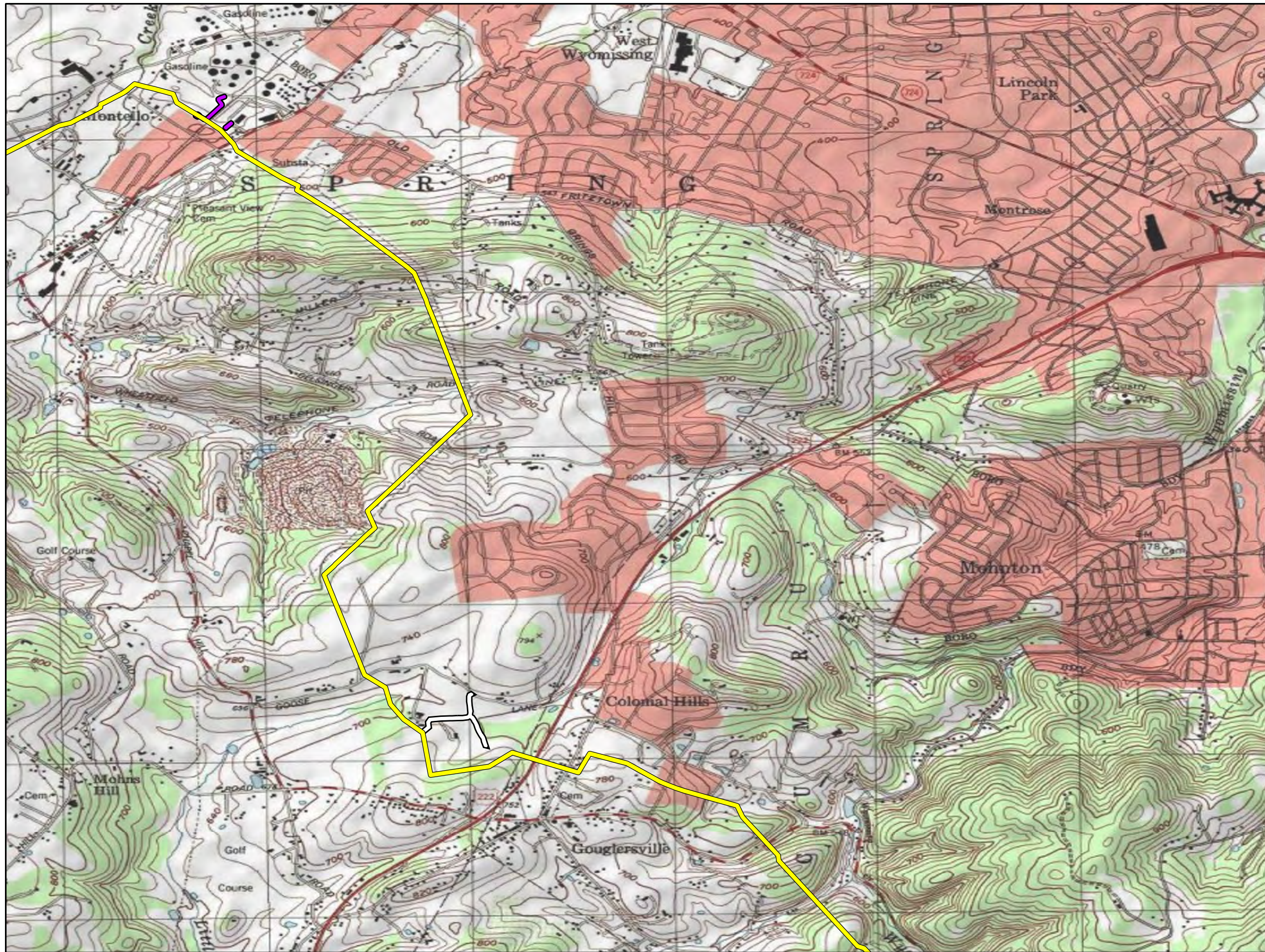
Prepared By:  TETRA TECH







Prepared for:  Sunoco Logistics

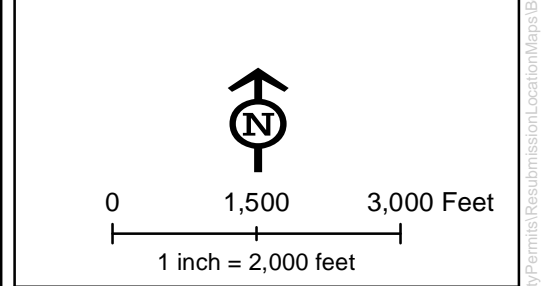
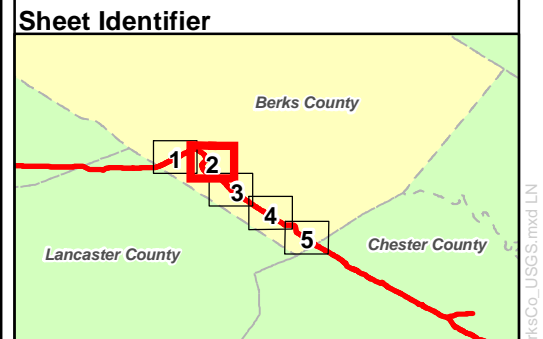
Base Map: ESRI ArcGIS Online  
 Coordinate System: NAD 83 UTM 17N  
 Date: **03/2016**

P:\GIS\Projects\172005566-PPP\MapXDR\Permits\Resubmission\Location\Maps\BerksCo\_USGS.mxd LN





- Legend**
-  Proposed Centerline
  -  ROW - Permanent Access Road
  -  ROW - Temporary Access Road
  -  Pump Station LOD
  -  County Boundary
  -  State Boundary



**Figure 1. Project Location for the Sunoco Pennsylvania Pipeline Project, Berks County, PA. Sheet 2 of 5**

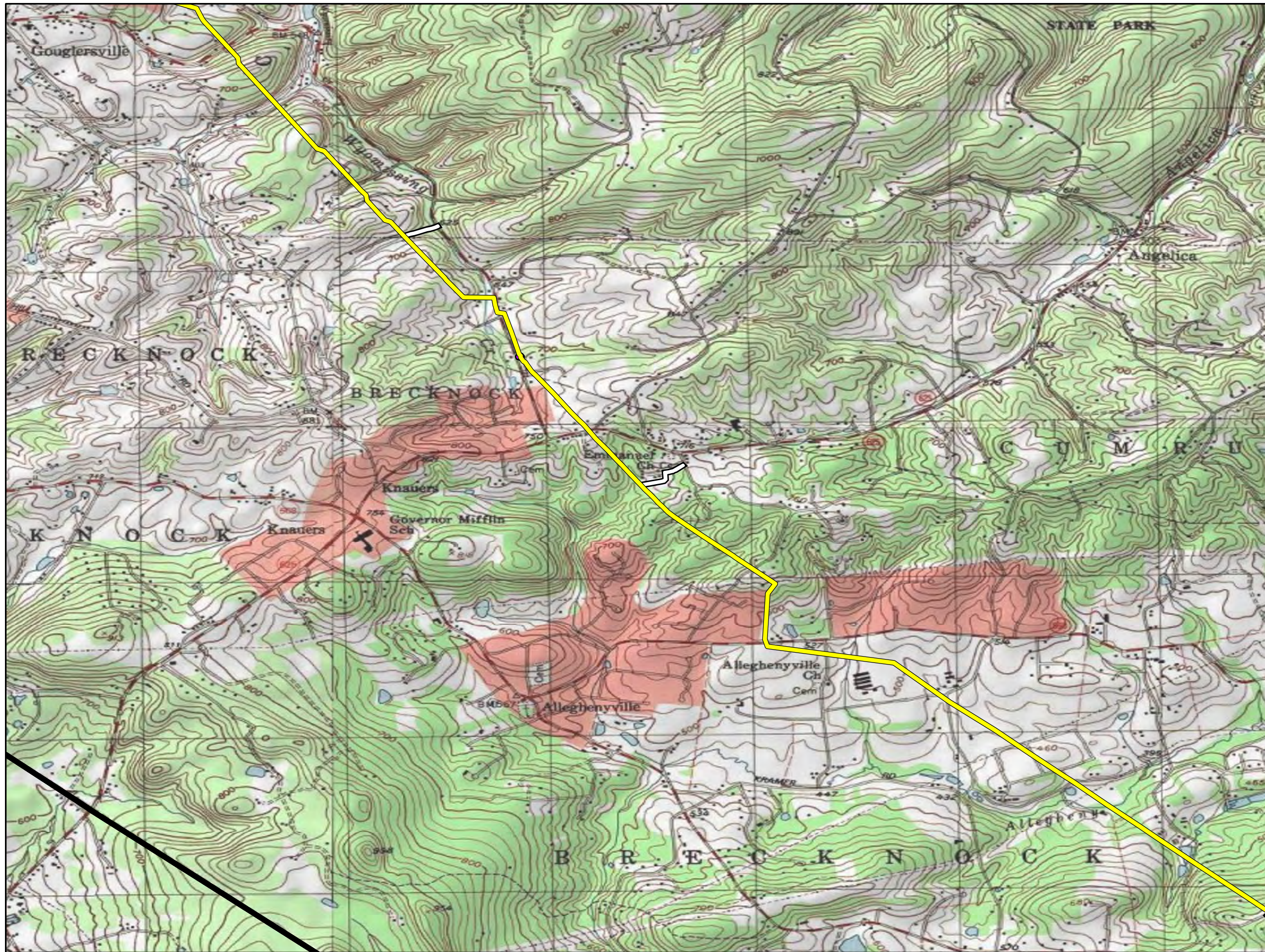
Prepared By:  TETRA TECH




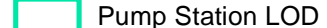


Prepared for:  Sunoco Logistics

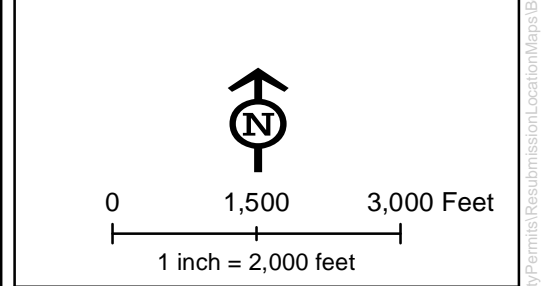
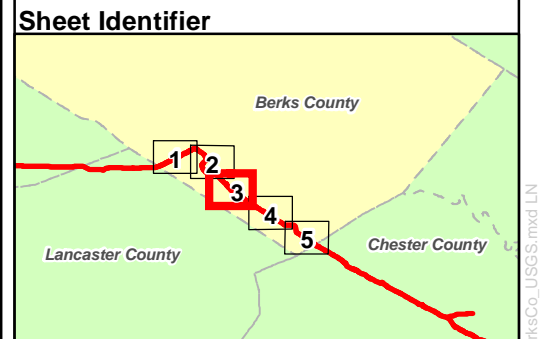
Base Map: ESRI ArcGIS Online  
 Coordinate System: NAD 83 UTM 17N  
 Date: **03/2016**

P:\GIS\Projects\17200566-PPF\MapXDR\Permits\Resubmission\Location\Maps\BerksCo\_USGS.mxd LN





- Legend**
-  Proposed Centerline
  -  ROW - Permanent Access Road
  -  ROW - Temporary Access Road
  -  Pump Station LOD
  -  County Boundary
  -  State Boundary



**Figure 1. Project Location for the Sunoco Pennsylvania Pipeline Project, Berks County, PA. Sheet 3 of 5**

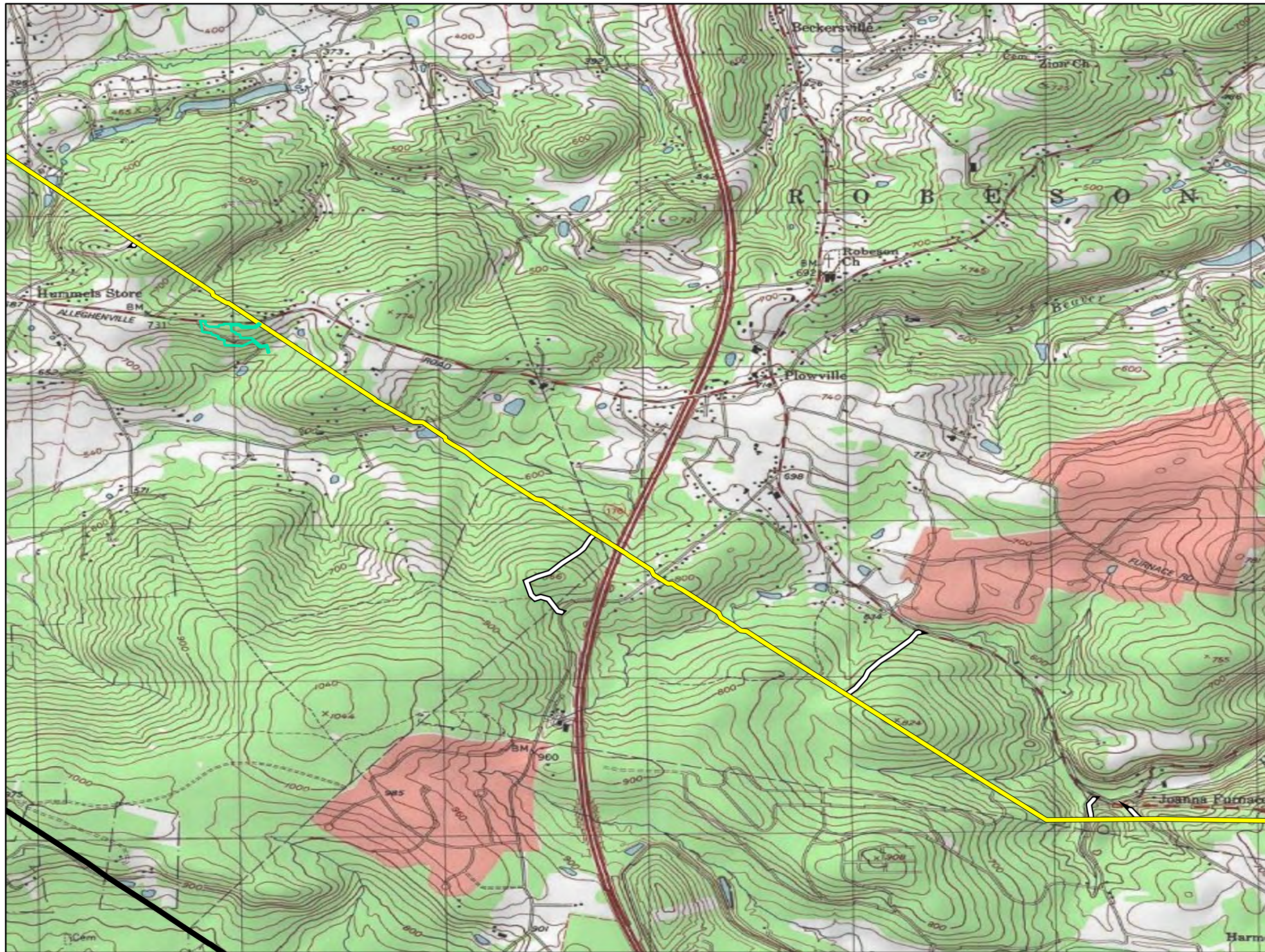
Prepared By:  TETRA TECH







Prepared for:  Sunoco Logistics

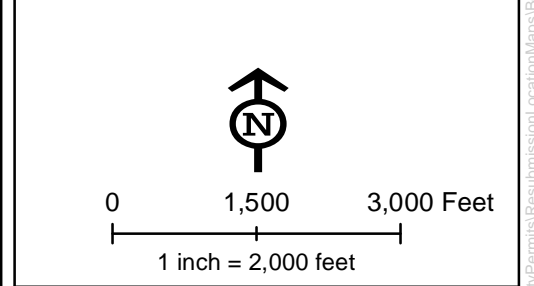
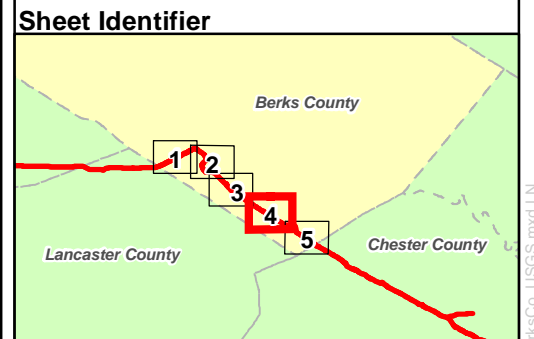
Base Map: ESRI ArcGIS Online  
 Coordinate System: NAD 83 UTM 17N  
 Date: **03/2016**

P:\GIS\Projects\17200566-PPF\MapXDR\Permits\Resubmission\Location\Maps\BerksCo\_USGS.mxd LN





- Legend**
-  Proposed Centerline
  -  ROW - Permanent Access Road
  -  ROW - Temporary Access Road
  -  Pump Station LOD
  -  County Boundary
  -  State Boundary



**Figure 1. Project Location for the Sunoco Pennsylvania Pipeline Project, Berks County, PA. Sheet 4 of 5**

Prepared By:  TETRA TECH







Prepared for:  Sunoco Logistics

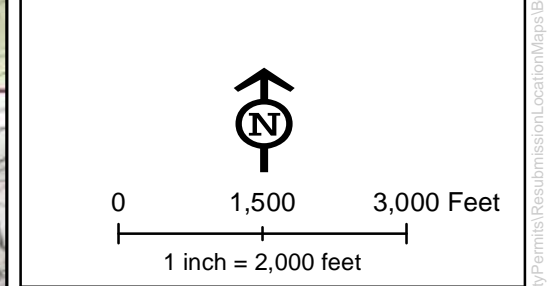
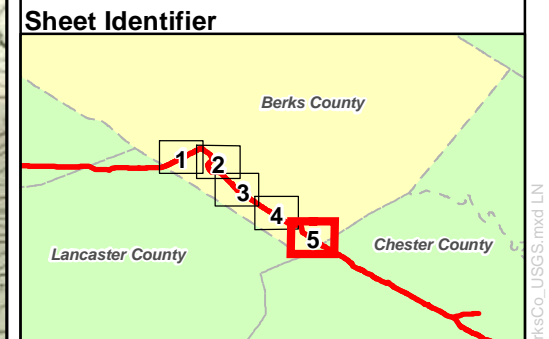
Base Map: ESRI ArcGIS Online  
 Coordinate System: NAD 83 UTM 17N  
 Date: **03/2016**

P:\GIS\Projects\17200566-PPF\IMXD\Permits\Resubmission\Location\Maps\BerksCo\_USGS.mxd LN





- Legend**
-  Proposed Centerline
  -  ROW - Permanent Access Road
  -  ROW - Temporary Access Road
  -  Pump Station LOD
  -  County Boundary
  -  State Boundary



**Figure 1. Project Location for the Sunoco Pennsylvania Pipeline Project, Berks County, PA. Sheet 5 of 5**

Prepared By:  TETRA TECH

Prepared for:  Sunoco Logistics

Base Map: ESRI ArcGIS Online  
 Coordinate System: NAD 83 UTM 17N  
 Date: **03/2016**

P:\GIS\Projects\172005566-PPP\MapXDR\Permits\Resubmission\Location\Maps\BerksCo\_USGS.mxd LN