

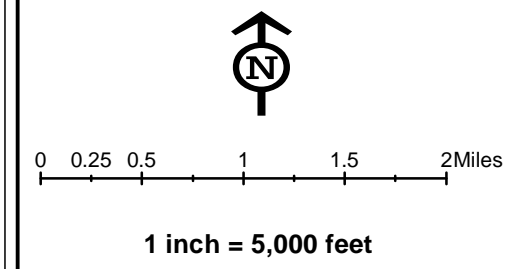
**Legend**

- Sheet Boundary
- Swedesford Lateral
- PPP 1
- PPP 2
- Township Line
- Roads
- County Boundary



**Mapset Legend**

- |                    |                              |                                  |                           |   |
|--------------------|------------------------------|----------------------------------|---------------------------|---|
| Sheet Boundary     | Permanent ROW                | Existing Buried Cable            | Stream Photo              | Pond  |
| Roads              | Temporary ROW                | Existing Electric Line           | PEM Photo                 | PEM Wetland                                 |
| Municipal Boundary | ATWS                         | Existing Fiberoptic Cable        | PFO Photo                 | PFO Wetland                                 |
| Swedesford Lateral | Block Valve Setting LOD      | Existing Gas Line                | PSS Photo                 | PSS Wetland                                 |
| PPP 1              | Existing Block Valve Setting | Existing Phone Line              | Ephemeral Stream          | PEM Extension                               |
| PPP 2              | Permanent Access Road        | Existing Sanitary Sewer          | Intermittent Stream       | PFO Extension                               |
| PPP 1 Bore         | Temporary Access Road        | Existing Septic System           | Perennial Stream          | PSS Extension                               |
| PPP 2 Bore         | Clearing Only                | Existing Storm Sewer             | Ch. 105 Floodways         | Permanent Easement (no surface disturbance) |
| PPP 1 HDD          | Travel Only                  | Existing TV Line                 | Waived Ch. 105 Floodways  | Parcels                                     |
| PPP 2 HDD          | Stations                     | Existing Utility (unknown)       | Ch. 106 Floodplain Fringe | Contours                                    |
|                    |                              | Existing Water Line              |                           |   |
|                    |                              | 8" Centerline                    |                           |   |
|                    |                              | 8" Pipeline Maintenance Corridor |                           |   |

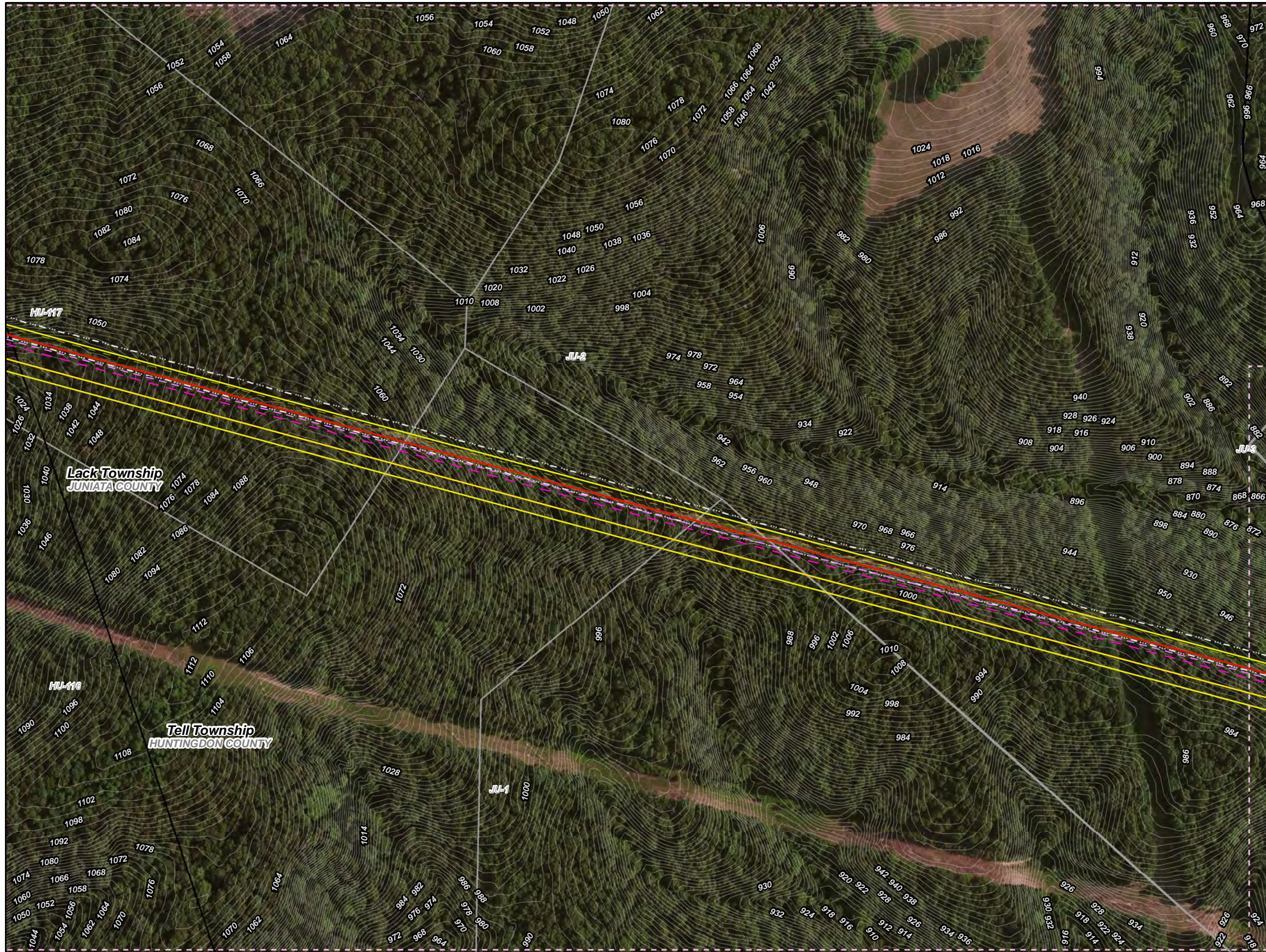


**Site Plan Sheet Key for the Sunoco Pennsylvania Pipeline Project, Juniata County, PA.**  
Sheet 1 of 1

**Prepared By:** **TETRA TECH** **Date:** 05/2016

Base Map: ESRI ArcGIS Online, Roads from NRCS Geospatial Data Giveaway, 100-Year Floodplain from FEMA National Flood Hazard Layer, downloaded 10/2015.  
Coordinate System: NAD 83 Stateplane, PA South, Feet

P:\GIS\Projects\1121C5558-PPP\7\XD\Fermitis\JuniataCounty\Permits\JuniataCounty\SheetKey\_2.LN



### Legend

- Swedesford Lateral
- PPP 1
- PPP 2
- PPP 1 Bore
- PPP 2 Bore
- PPP 1 HDD
- PPP 2 HDD
- Permanent ROW
- Temporary ROW
- ATWS
- Block Valve Setting LOD
- Existing Block Valve Setting
- Permanent Access Road
- Temporary Access Road
- Clearing Only
- Travel Only
- Permanent Easement (no surface disturbance)
- Stations
- Ephemeral Stream
- Intermittent Stream
- Perennial Stream
- Pond
- PEM Wetland
- PFO Wetland
- PSS Wetland
- Ch. 105 Floodways
- Waived Ch. 105 Floodways
- Ch. 106 Floodplain Fringe

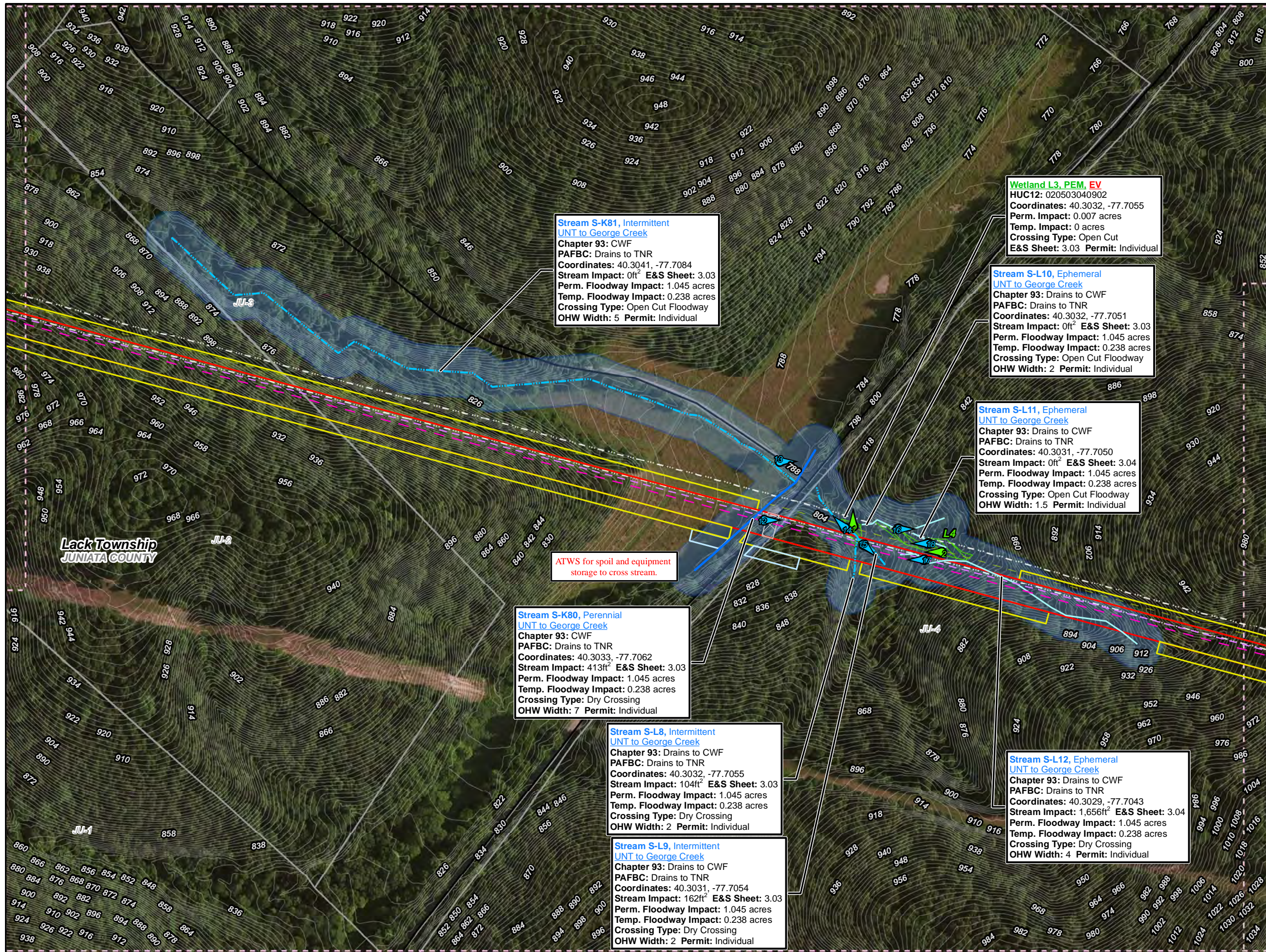
**1 inch = 200 feet**

**Site Plan for the Sunoco Pennsylvania Pipeline Project, Juniata County, PA.**  
Sheet 1 of 6

Prepared By:	Date:
	5/2016

Base Map; ESRI ArcGIS Online, Roads from NRCS Geospatial Data Giveaway, 100-Year Floodplain from FEMA National Flood Hazard Layer, downloaded 8/2013.  
Coordinate System: NAD 83 Stateplane, PA South, Feet

P:\GIS\Projects\1121C5958-PPP\10XDF\Permits\JuniataCounty\SitePlan\_Rev4



### Legend

- Swedesford Lateral
- PPP 1
- PPP 2
- PPP 1 Bore
- PPP 2 Bore
- PPP 1 HDD
- PPP 2 HDD
- Permanent ROW
- Temporary ROW
- ATWS
- Block Valve Setting LOD
- Existing Block Valve Setting
- Permanent Access Road
- Temporary Access Road
- Clearing Only
- Travel Only
- Permanent Easement (no surface disturbance)
- Stations
- Ephemeral Stream
- Intermittent Stream
- Perennial Stream
- Pond
- PEM Wetland
- PFO Wetland
- PSS Wetland
- Ch. 105 Floodways
- Waived Ch. 105 Floodways
- Ch. 106 Floodplain Fringe

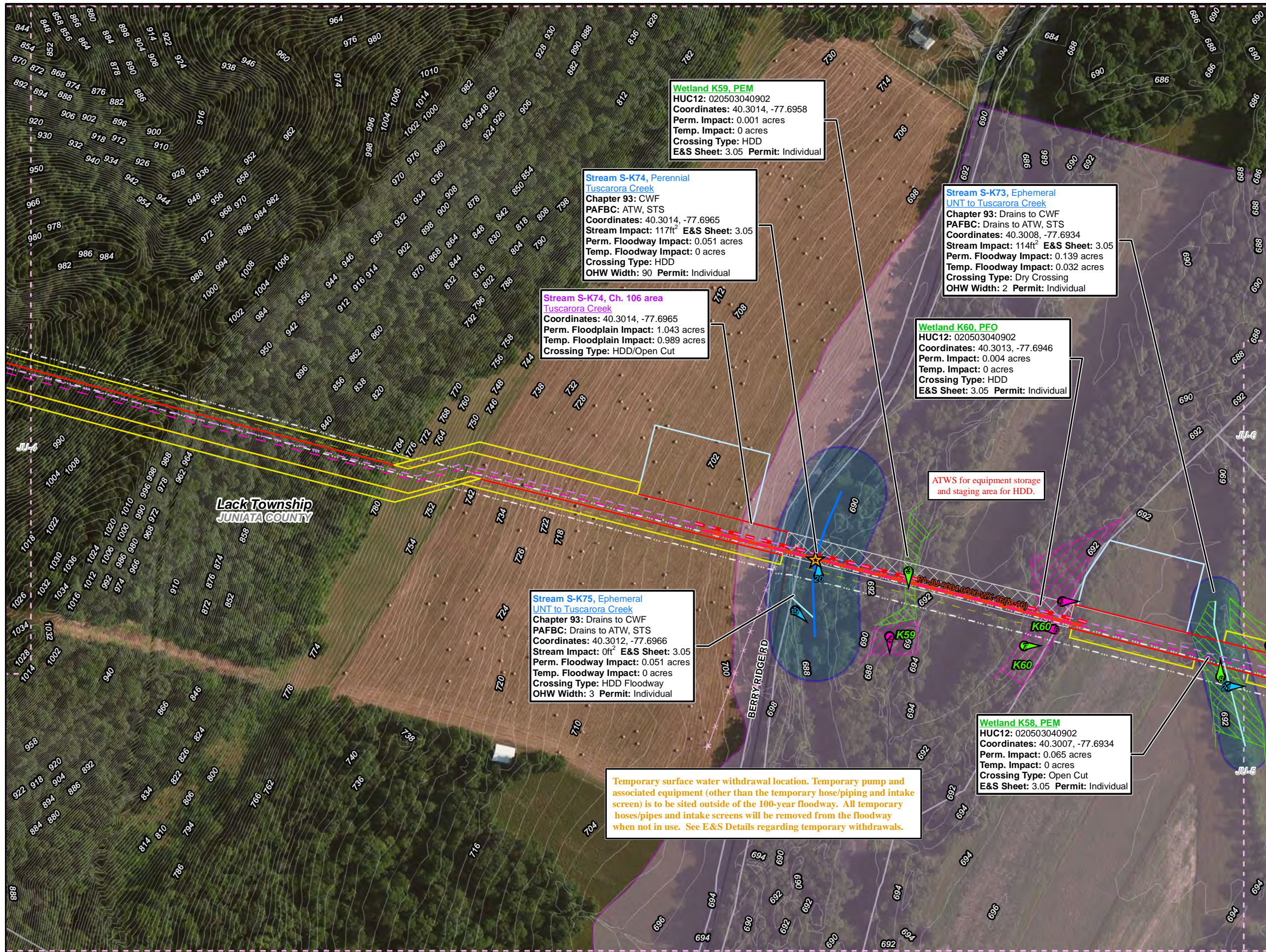
0 50 100 200 300 400

**1 inch = 200 feet**

**Site Plan for the Sunoco Pennsylvania Pipeline Project, Juniata County, PA.**  
 Sheet 2 of 6

<b>Prepared By:</b>	<b>Date:</b>
	5/2016

Base Map: ESRI ArcGIS Online, Roads from NRCS Geospatial Data Giveaway, 100-Year Floodplain from FEMA National Flood Hazard Layer, downloaded 8/2013.  
 Coordinate System: NAD 83 Stateplane, PA South, Feet



### Legend

- Swedesford Lateral
- PPP 1
- PPP 2
- PPP 1 Bore
- PPP 2 Bore
- PPP 1 HDD
- PPP 2 HDD
- Permanent ROW
- Temporary ROW
- ATWS
- Block Valve Setting LOD
- Existing Block Valve Setting
- Permanent Access Road
- Temporary Access Road
- Clearing Only
- Travel Only
- Permanent Easement (no surface disturbance)
- Stations
- Ephemeral Stream
- Intermittent Stream
- Perennial Stream
- Pond
- PEM Wetland
- PFO Wetland
- PSS Wetland
- Ch. 105 Floodways
- Waived Ch. 105 Floodways
- Ch. 106 Floodplain Fringe

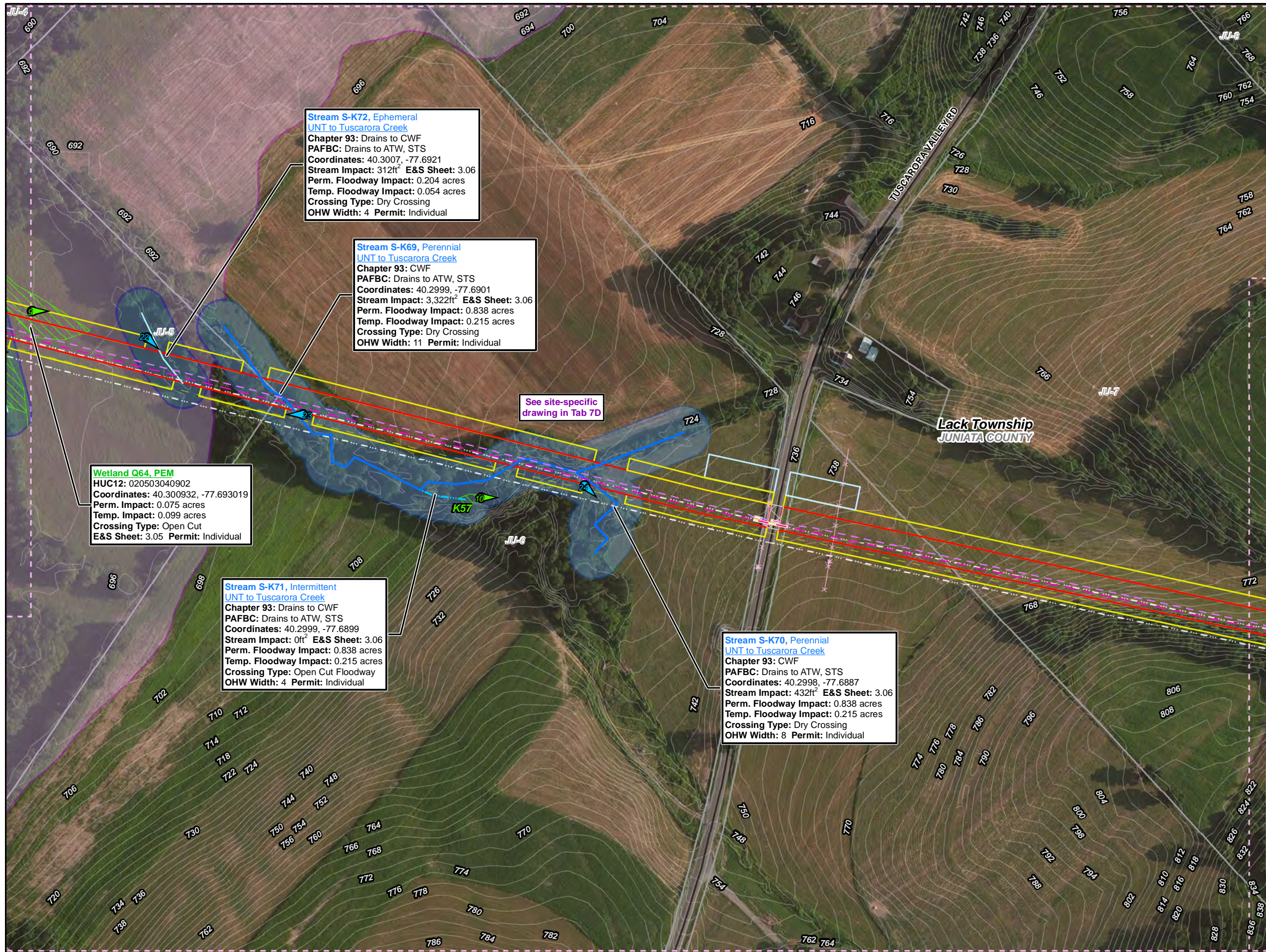
0 50 100 200 300 400

**1 inch = 200 feet**

**Site Plan for the Sunoco Pennsylvania Pipeline Project, Juniata County, PA.**  
 Sheet 3 of 6

<b>Prepared By:</b>	<b>Date:</b>
	5/2016

Base Map: ESRI ArcGIS Online, Roads from NRCS Geospatial Data Giveaway, 100-Year Floodplain from FEMA National Flood Hazard Layer, downloaded 8/2013.  
 Coordinate System: NAD 83 Stateplane, PA South, Feet



### Legend

- Swedesford Lateral
- PPP 1
- PPP 2
- PPP 1 Bore
- PPP 2 Bore
- PPP 1 HDD
- PPP 2 HDD
- Permanent ROW
- Temporary ROW
- ATWS
- Block Valve Setting LOD
- Existing Block Valve Setting
- Permanent Access Road
- Temporary Access Road
- Clearing Only
- Travel Only
- Permanent Easement (no surface disturbance)
- Stations
- Ephemeral Stream
- Intermittent Stream
- Perennial Stream
- Pond
- PEM Wetland
- PFO Wetland
- PSS Wetland
- Ch. 105 Floodways
- Waived Ch. 105 Floodways
- Ch. 106 Floodplain Fringe

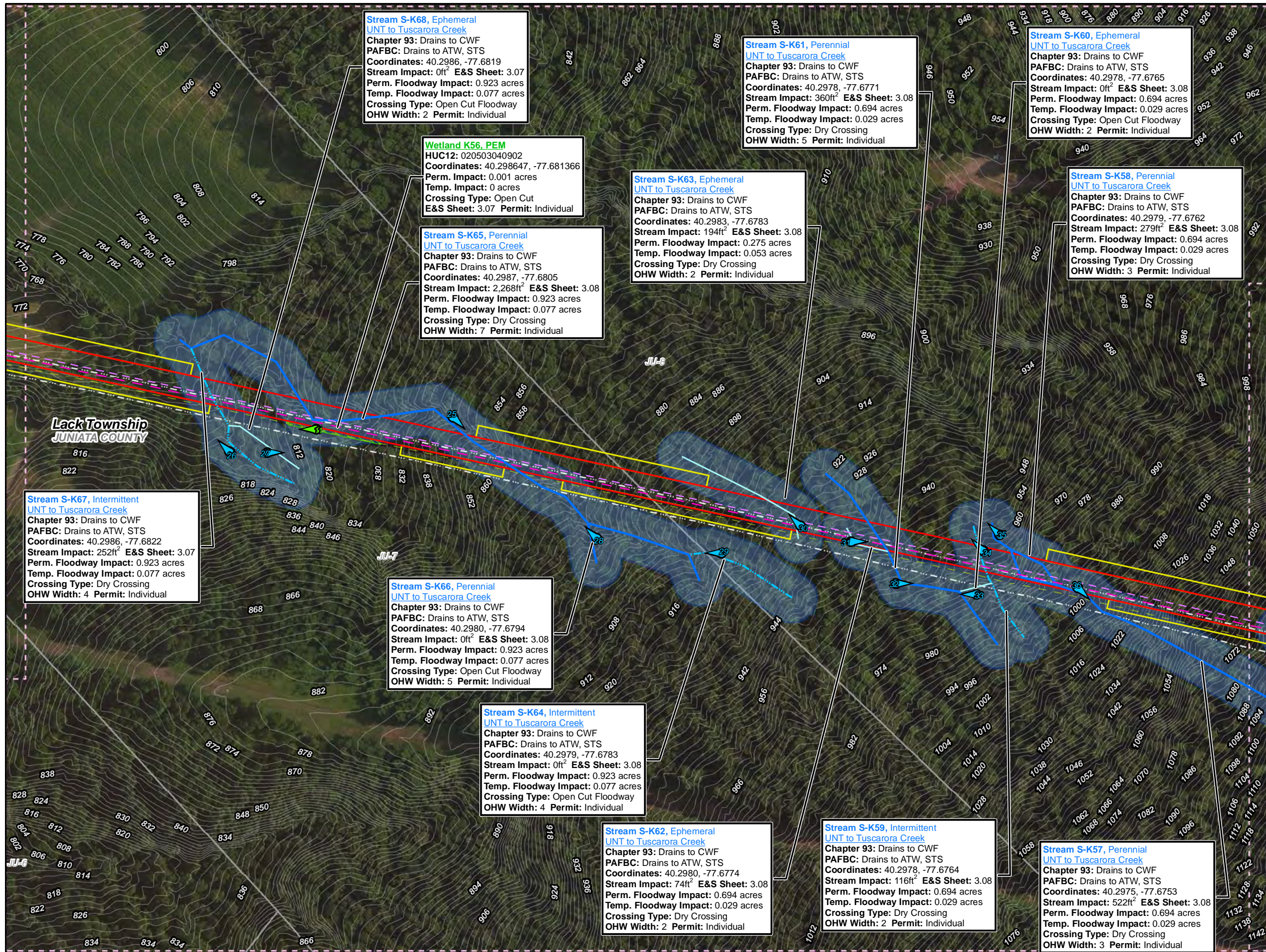
0 50 100 200 300 400

**1 inch = 200 feet**

**Site Plan for the Sunoco Pennsylvania Pipeline Project, Juniata County, PA.**  
 Sheet 4 of 6

Prepared By:	Date:
	5/2016

Base Map: ESRI ArcGIS Online, Roads from NRCS Geospatial Data Giveaway, 100-Year Floodplain from FEMA National Flood Hazard Layer, downloaded 8/2013.  
 Coordinate System: NAD 83 Stateplane, PA South, Feet



### Legend

- Swedesford Lateral
- PPP 1
- PPP 2
- PPP 1 Bore
- PPP 2 Bore
- PPP 1 HDD
- PPP 2 HDD
- Permanent ROW
- Temporary ROW
- ATWS
- Block Valve Setting LOD
- Existing Block Valve Setting
- Permanent Access Road
- Temporary Access Road
- Clearing Only
- Travel Only
- Permanent Easement (no surface disturbance)
- Stations
- Ephemeral Stream
- Intermittent Stream
- Perennial Stream
- Pond
- PEM Wetland
- PFO Wetland
- PSS Wetland
- Ch. 105 Floodways
- Waived Ch. 105 Floodways
- Ch. 106 Floodplain Fringe

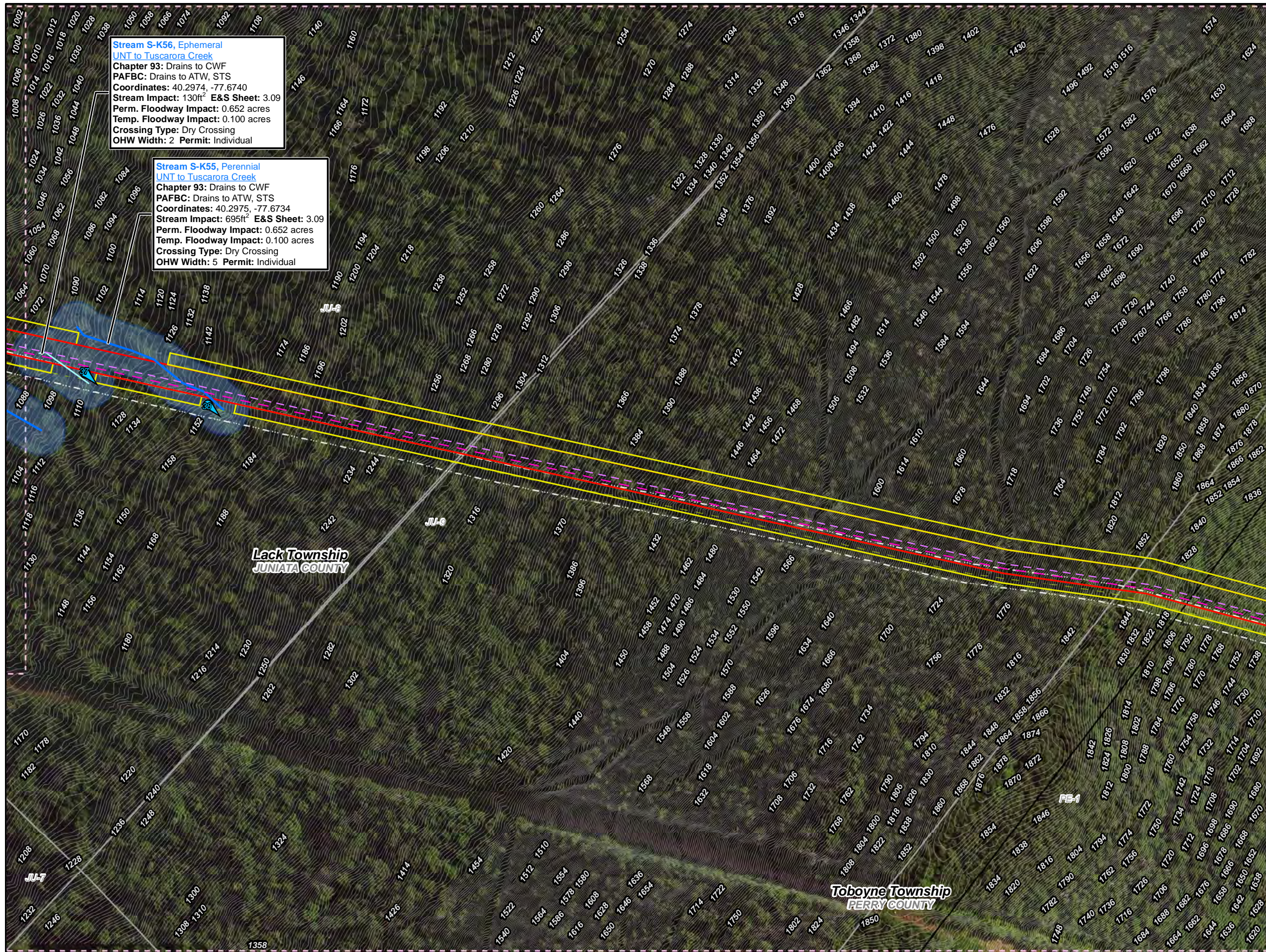
0 50 100 200 300 400

**1 inch = 200 feet**

**Site Plan for the Sunoco Pennsylvania Pipeline Project, Juniata County, PA.**  
 Sheet 5 of 6

<b>Prepared By:</b>	<b>Date:</b>
	5/2016

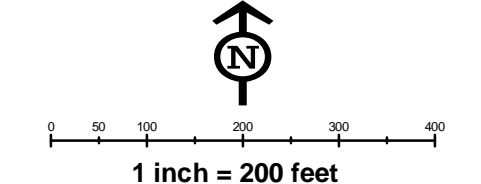
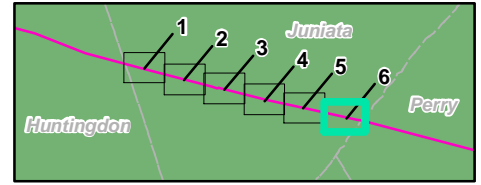
Base Map: ESRI ArcGIS Online, Roads from NRCS Geospatial Data Giveaway, 100-Year Floodplain from FEMA National Flood Hazard Layer, downloaded 8/2013.  
 Coordinate System: NAD 83 Stateplane, PA South, Feet



**Stream S-K56, Ephemeral**  
 UNT to Tuscarora Creek  
 Chapter 93: Drains to CWF  
 PAFBC: Drains to ATW, STS  
 Coordinates: 40.2974, -77.6740  
 Stream Impact: 130ft<sup>2</sup> E&S Sheet: 3.09  
 Perm. Floodway Impact: 0.652 acres  
 Temp. Floodway Impact: 0.100 acres  
 Crossing Type: Dry Crossing  
 OHW Width: 2 Permit: Individual

**Stream S-K55, Perennial**  
 UNT to Tuscarora Creek  
 Chapter 93: Drains to CWF  
 PAFBC: Drains to ATW, STS  
 Coordinates: 40.2975, -77.6734  
 Stream Impact: 695ft<sup>2</sup> E&S Sheet: 3.09  
 Perm. Floodway Impact: 0.652 acres  
 Temp. Floodway Impact: 0.100 acres  
 Crossing Type: Dry Crossing  
 OHW Width: 5 Permit: Individual

- ### Legend
- Swedesford Lateral
  - PPP 1
  - PPP 2
  - PPP 1 Bore
  - PPP 2 Bore
  - PPP 1 HDD
  - PPP 2 HDD
  - Permanent ROW
  - Temporary ROW
  - ATWS
  - Block Valve Setting LOD
  - Existing Block Valve Setting
  - Permanent Access Road
  - Temporary Access Road
  - Clearing Only
  - Travel Only
  - Permanent Easement (no surface disturbance)
  - Stations
  - Ephemeral Stream
  - Intermittent Stream
  - Perennial Stream
  - Pond
  - PEM Wetland
  - PFO Wetland
  - PSS Wetland
  - Ch. 105 Floodways
  - Waived Ch. 105 Floodways
  - Ch. 106 Floodplain Fringe



**Site Plan for the Sunoco Pennsylvania Pipeline Project, Juniata County, PA.**  
 Sheet 6 of 6

Prepared By:	Date:
TETRA TECH	5/2016

Base Map: ESRI ArcGIS Online, Roads from NRCS Geospatial Data Giveaway, 100-Year Floodplain from FEMA National Flood Hazard Layer, downloaded 8/2013.  
 Coordinate System: NAD 83 Stateplane, PA South, Feet

P:\GIS\Projects\121255956-PPP\10XDR\Permits\JuniataCounty\SitePlan\_R6w