



**Legend**


- Proposed Centerline - 20in
- Pump Station
- Permanent Access Road
- Temporary Access Road
- County Boundary
- State Parks
- State Forest
- State Gamelands
- Wild Natural Areas
- USDA Soils-Prime Farmlands
- Appalachian National Scenic Trail

**Sheet Identifier**

  
 0 1,000 2,000  
 1 inch = 2,000 feet

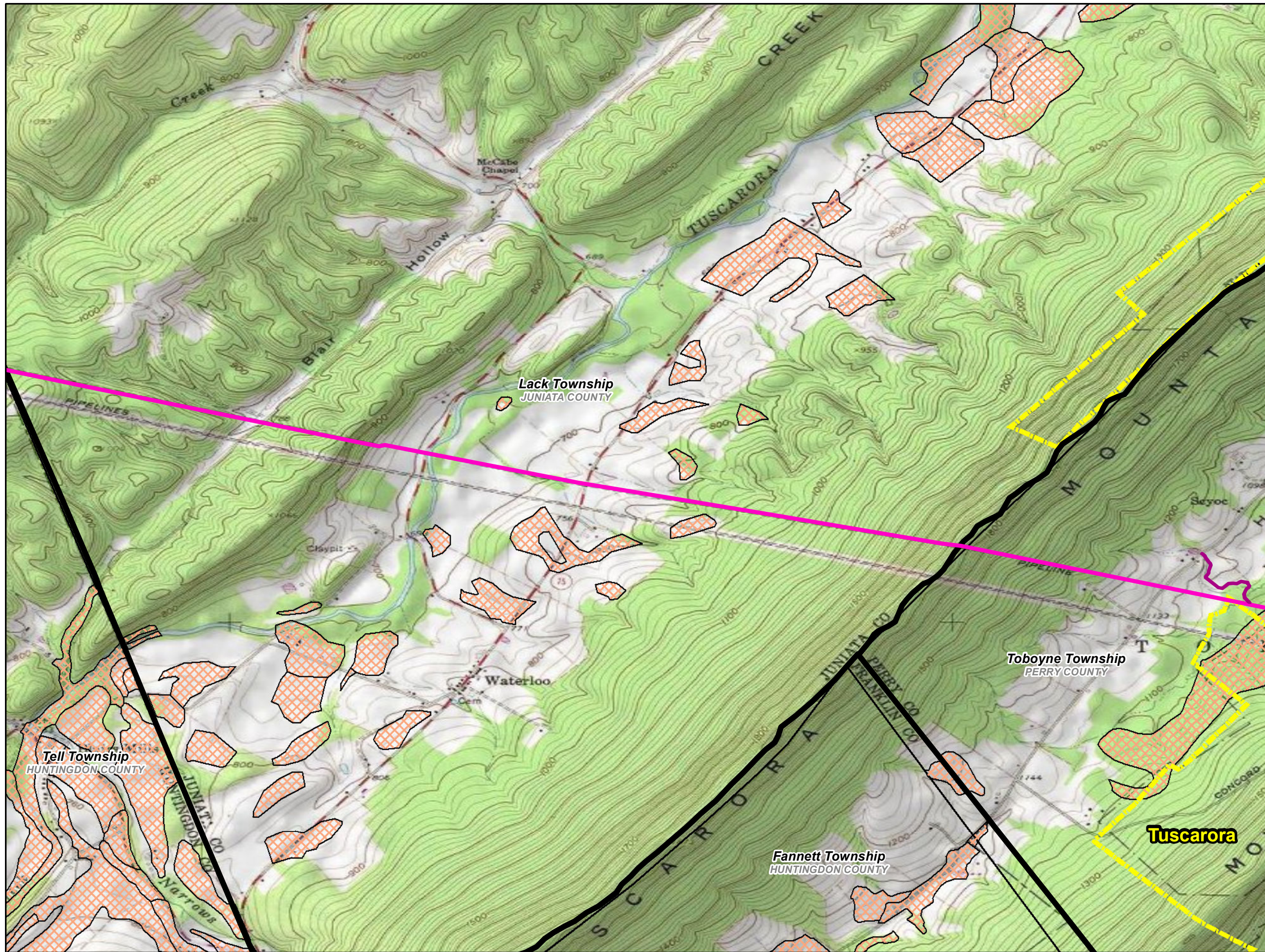
**Pennsylvania Pipeline Project:**  
**Environmental Assessment**  
**Enclosure B - Resource Identification**  
**Sheet 1 of 2**

Prepared By:  **TETRA TECH**

Prepared for:  **Sunoco Logistics**

|                                   |               |
|-----------------------------------|---------------|
| Base Map: ESRI ArcGIS Online      | <b>Date:</b>  |
| Coordinate System: NAD 83 UTM 17N | <b>3/2016</b> |

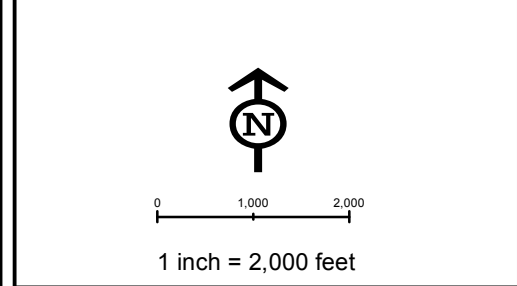
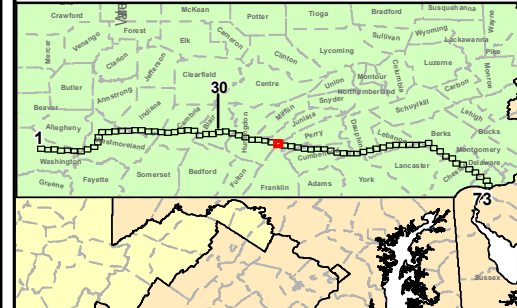
P:\GIS\Projects\1712105586-PPM\XDR\PCN\_USOS



**Legend**

- Proposed Centerline - 20in
- Pump Station
- Permanent Access Road
- Temporary Access Road
- County Boundary
- State Parks
- State Forest
- State Gamelands
- Wild Natural Areas
- USDA Soils-Prime Farmlands
- Appalachian National Scenic Trail

**Sheet Identifier**



**Pennsylvania Pipeline Project:  
Environmental Assessment  
Enclosure B - Resource Identification  
Sheet 2 of 2**

Prepared By: **TETRA TECH**

Prepared for: **Sunoco Logistics**

|                                   |               |
|-----------------------------------|---------------|
| Base Map: ESRI ArcGIS Online      | <b>Date:</b>  |
| Coordinate System: NAD 83 UTM 17N | <b>3/2016</b> |

P:\GIS\Projects\1212\5586\PPP\Map\PPCN\_USOS