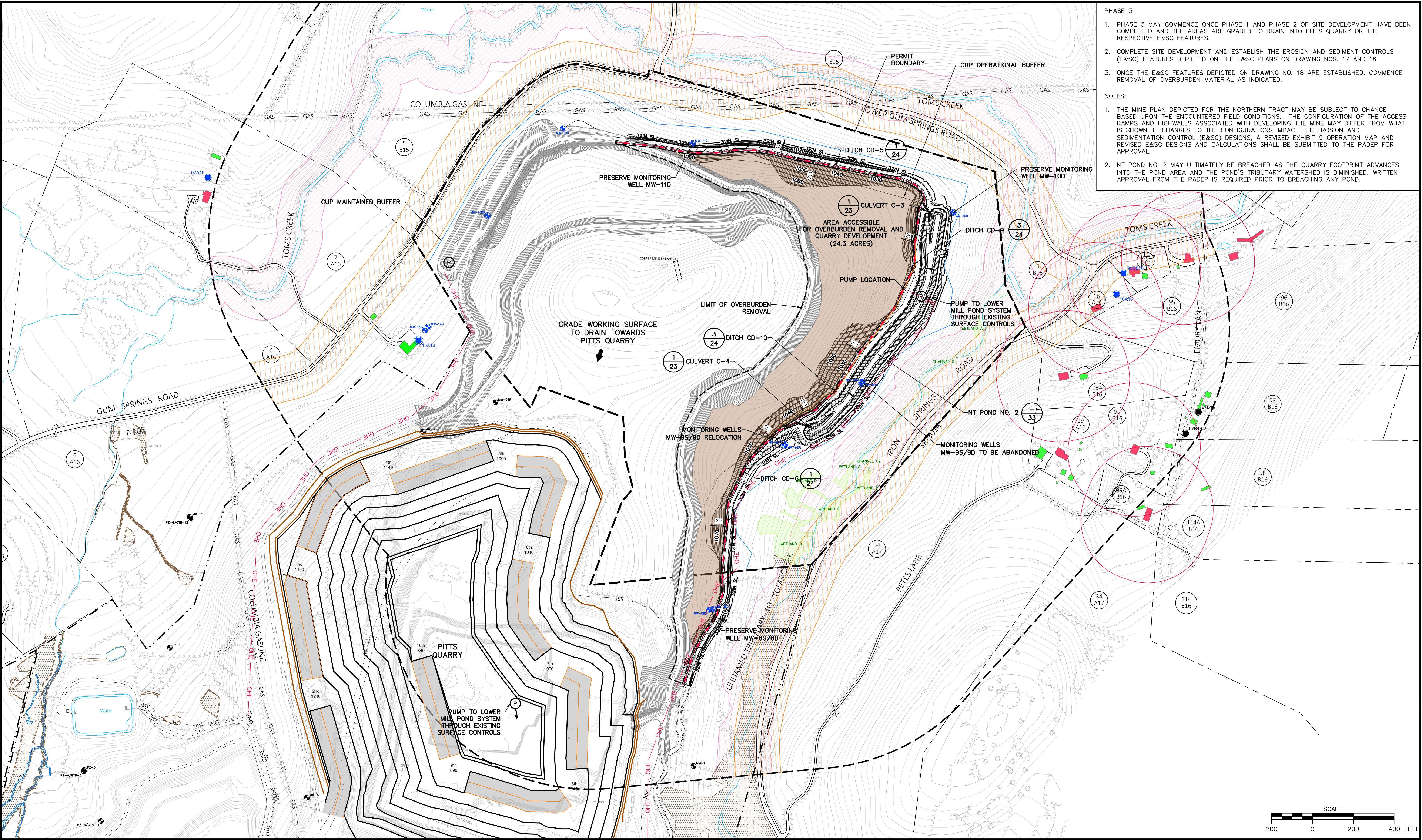
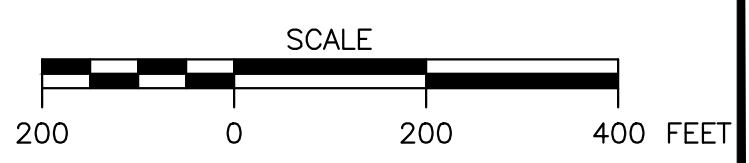


Monday, April 16, 2018 9:48:12 AM

R: 2015152596 - SGI Disposal Embankment Drawings Northern Tract Exhibit 12-Quarry Site Development-Phase 3-R1.dwg



- PHASE 3
1. PHASE 3 MAY COMMENCE ONCE PHASE 1 AND PHASE 2 OF SITE DEVELOPMENT HAVE BEEN COMPLETED AND THE AREAS ARE GRADED TO DRAIN INTO PITTS QUARRY OR THE RESPECTIVE E&SC FEATURES.
 2. COMPLETE SITE DEVELOPMENT AND ESTABLISH THE EROSION AND SEDIMENT CONTROLS (E&SC) FEATURES DEPICTED ON THE E&SC PLANS ON DRAWING NOS. 17 AND 18.
 3. ONCE THE E&SC FEATURES DEPICTED ON DRAWING NO. 18 ARE ESTABLISHED, COMMENCE REMOVAL OF OVERBURDEN MATERIAL AS INDICATED.
- NOTES:
1. THE MINE PLAN DEPICTED FOR THE NORTHERN TRACT MAY BE SUBJECT TO CHANGE BASED UPON THE ENCOUNTERED FIELD CONDITIONS. THE CONFIGURATION OF THE ACCESS RAMPS AND HIGHWALLS ASSOCIATED WITH DEVELOPING THE MINE MAY DIFFER FROM WHAT IS SHOWN. IF CHANGES TO THE CONFIGURATIONS IMPACT THE EROSION AND SEDIMENTATION CONTROL (E&SC) DESIGNS, A REVISED EXHIBIT 9 OPERATION MAP AND REVISED E&SC DESIGNS AND CALCULATIONS SHALL BE SUBMITTED TO THE PADEP FOR APPROVAL.
 2. NT POND NO. 2 MAY ULTIMATELY BE BREACHED AS THE QUARRY FOOTPRINT ADVANCES INTO THE POND AREA AND THE POND'S TRIBUTARY WATERSHED IS DIMINISHED. WRITTEN APPROVAL FROM THE PADEP IS REQUIRED PRIOR TO BREACHING ANY POND.



NOTES / REVISIONS	
REV.	DESCRIPTION
1	REVISED PER PADEP-DMO COMMENT LETTER DATED 3/6/2018
2	
3	
4	
PADEP-DMO	4/17/2018
ISSUED FOR	DATE

SEAL:

REGISTERED PROFESSIONAL ENGINEER
ROBERT M. SHUSKO
ENGINEER 057023-E
PENNSYLVANIA
4-17-18

D'APPOLONIA

101 RUDI ROAD, FLOOR 2
PITTSBURGH, PENNSYLVANIA 15235-4559
(412) 856-9440 FAX (412) 856-9535

SKELLY AND LOY
ENGINEERING-ENVIRONMENTAL
CONSULTANTS

PROJECT NUMBER: 152596A

FILE NAME: Exhibit 12-Quarry Site Development-Phase 3-R1.dwg

DRAWN BY: AJM

CHECKED BY: RMS/MDW

DATE: 4/16/2018

DATE: 12/22/2017

SPECIALTY GRANULES LLC
CHARMIAN - NORTHERN TRACT QUARRY

EXHIBIT 9
QUARRY SITE DEVELOPMENT - PHASE 3

SCALE: AS SHOWN

DRAWING NO. 8

REV 1