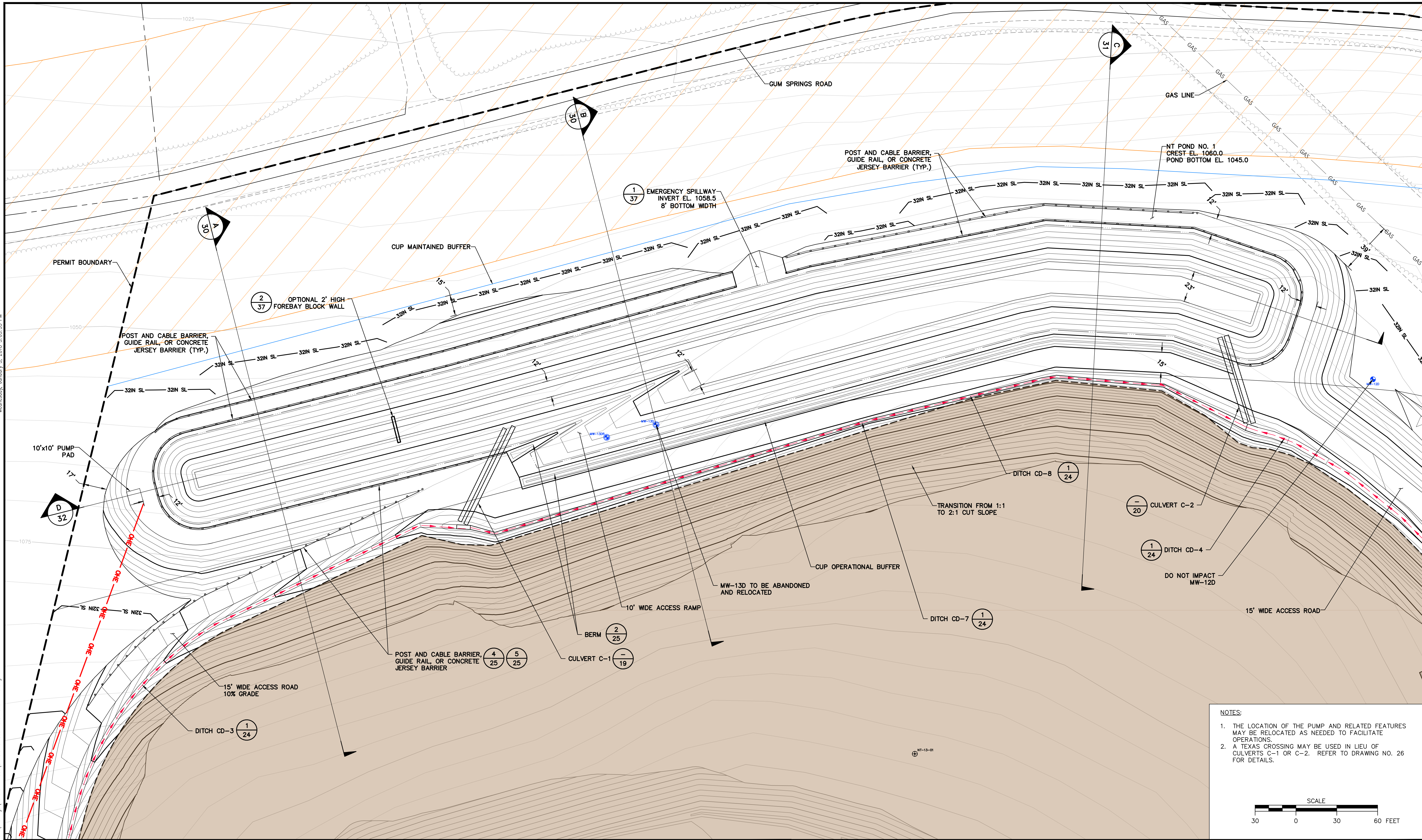


Wednesday, January 3, 2018 5:05:33 PM

R: 2015\152596 - SGI Disposal\Embarkment\Drawings\Northern Tract\Exhibit 13-Sediment Pond 1-R0.dwg



NOTES:

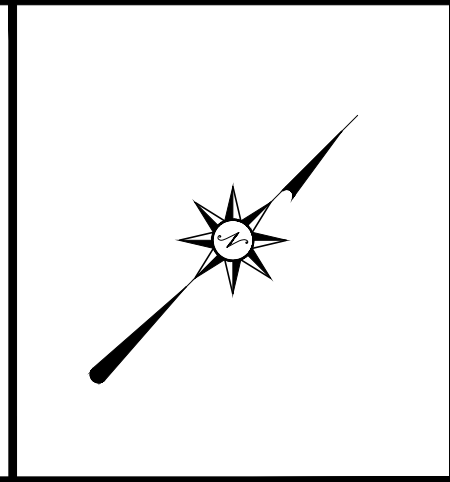
1. THE LOCATION OF THE PUMP AND RELATED FEATURES MAY BE RELOCATED AS NEEDED TO FACILITATE OPERATIONS.
2. A TEXAS CROSSING MAY BE USED IN LIEU OF CULVERTS C-1 OR C-2. REFER TO DRAWING NO. 26 FOR DETAILS.

SCALE
30 0 30 60 FEET

ISSUED FOR		DATE	REV.	REVISION DESCRIPTION	MADE BY	CHKD BY	DATE
			1				
			2				
			3				
			4				

SEAL:

ROBERT M. SHUSKO
REGISTERED PROFESSIONAL ENGINEER
12-33-17



D'APPOLONIA
701 RODI ROAD, FLOOR 2
PITTSBURGH, PENNSYLVANIA 15225-4559
(412) 856-9440 FAX (412) 856-9535

SKELLY AND LOY
ENGINEERING - ENVIRONMENTAL CONSULTANTS

PROJECT NUMBER: 152596A
FILE NAME: Exhibit 13-Sediment Pond 1-R0.dwg

DRAWN BY: AJM
CHECKED BY: RMS/MDW

DATE: 9/28/2016
DATE: 12/22/2017

SPECIALTY GRANULES LLC
CHARMIAN - NORTHERN TRACT QUARRY

EXHIBIT 13
NT POND NO. 1 - PLAN

SCALE: AS SHOWN
DRAWING NO. 29
REV 0