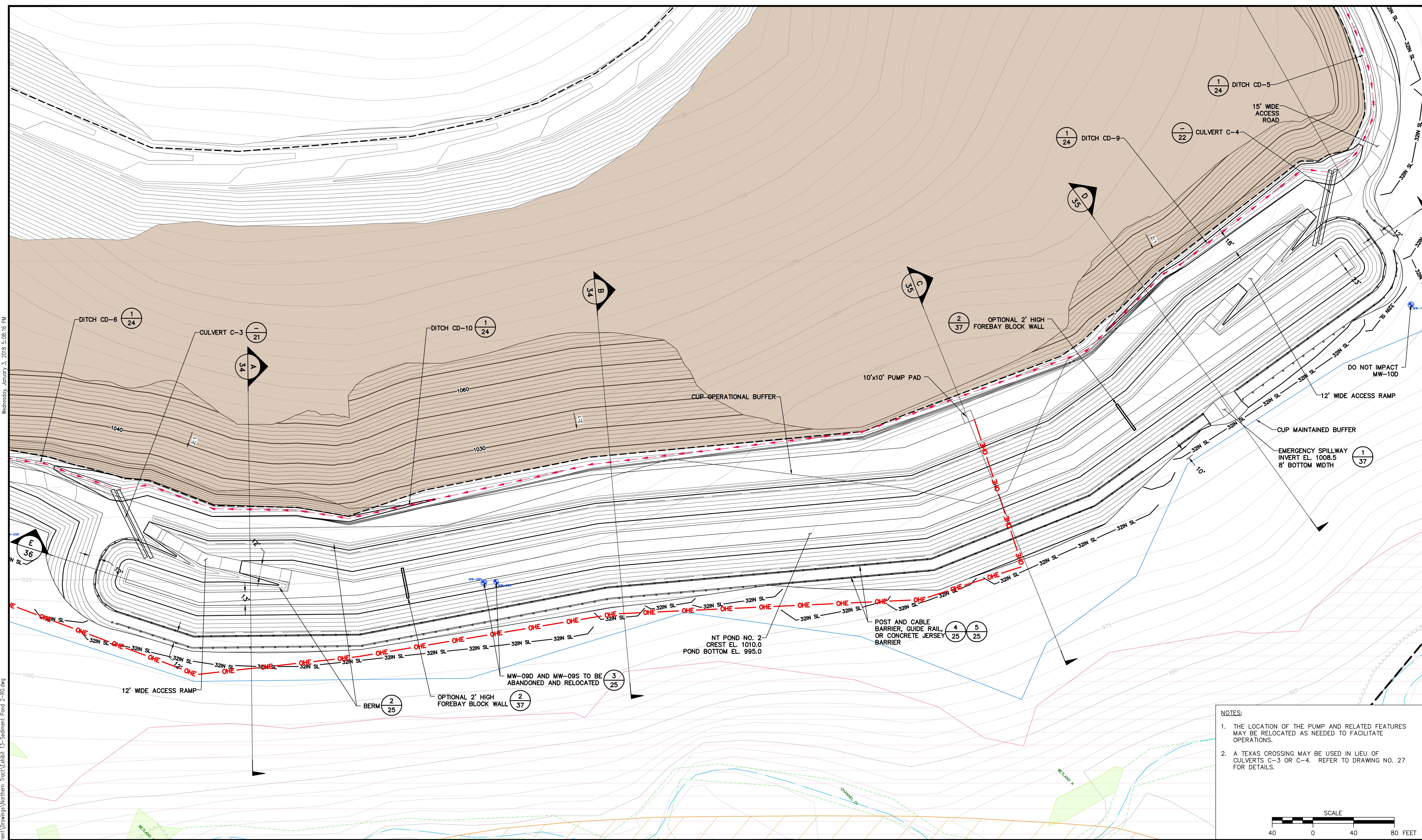
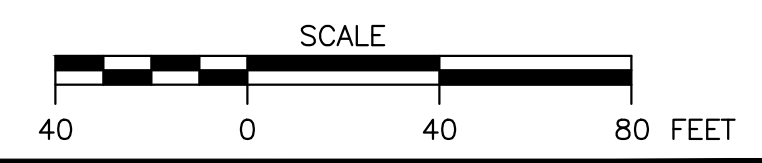


Wednesday, January 3, 2018 5:08:16 PM

R:\2015\152596 - SGI Disposal Embankment\Drawings\Northern Tract\Exhibit 13-Sediment Pond 2-R0.dwg



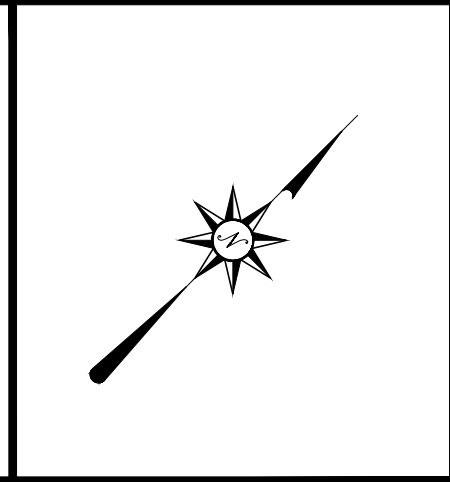
- NOTES:
1. THE LOCATION OF THE PUMP AND RELATED FEATURES MAY BE RELOCATED AS NEEDED TO FACILITATE OPERATIONS.
 2. A TEXAS CROSSING MAY BE USED IN LIEU OF CULVERTS C-3 OR C-4. REFER TO DRAWING NO. 27 FOR DETAILS.



NOTES / REVISIONS						
ISSUED FOR	DATE	REV.	REVISION DESCRIPTION	MADE BY	CHKD BY	DATE
		1				
		2				
		3				
		4				

SEAL:

ROBERT M. SHUSKO
ENGINEER
107023-E
12-22-17



D'APPOLONIA
701 RODI ROAD, FLOOR 2
PITTSBURGH, PENNSYLVANIA 15235-4559
(412) 856-9440 FAX (412) 856-9535

SKELLY AND LOY
ENGINEERING - ENVIRONMENTAL CONSULTANTS

SGI

PROJECT NUMBER: 152596A
FILE NAME: Exhibit 13-Sediment Pond 2-R0.dwg

DRAWN BY: AJM
CHECKED BY: RMS/MDW

DATE: 9/29/2016
DATE: 12/22/2017

SPECIALTY GRANULES LLC
CHARMIAN - NORTHERN TRACT QUARRY

EXHIBIT 13
NT POND NO. 2 - PLAN

SCALE: AS SHOWN
DRAWING NO. 33
REV 0