



pennsylvania
DEPARTMENT OF ENVIRONMENTAL PROTECTION



Active and Abandoned Mine Operations

New Hope Crushed Stone

Monthly Update

Solebury Communications Group

September 2016

Tom Wolf, Governor

Patrick McDonnell, Acting Secretary

September 2016 Project Status

STATUS AS OF:	September 30, 2016	
PROJECT	New Hope Crushed Stone (NHCS) Quarry Reclamation and Stream Restoration	
START DATE	Reclamation: January 29, 2016 Stream Restoration: January 29, 2016	
ANTICIPATED COMPLETION DATE	Reclamation: March 2019 Stream Restoration: March 2019	
CURRENT STATUS	Quarry Reclamation	Behind
	Stream Restoration	On Schedule

Key Ongoing Factors

- Provisions of the January 29, 2016, letter from DEP to NHCS continue to be in effect.
- Reclamation and stream restoration are required to be completed by March 2019; it is currently behind schedule.
- NHCS has appealed the January 29 letter to the EHB. A hearing is scheduled for March 20, 2017, at the DEP SERO, Norristown.
- NHCS has appealed the August 23, 2016, Compliance Order and \$20,370 civil penalty.
- The Compliance Order requires NHCS to report on progress by the 5th of each month that includes quantifiable data which will be tracked in this monthly status report.

September 2016 Highlights

- DEP made the annual presentation on NHCS before the Solebury Township Supervisors at a public meeting on September 19.
- Notice of Proposed Assessment, September 12.
 - Resulted from August 26 Compliance Order.
 - Civil Penalty of \$20,370 was determined.
 - NHCS filed an appeal with the Environmental Hearing Board on September 21.
- Settlement Negotiations.
 - Talks between DEP and NHCS have continued.

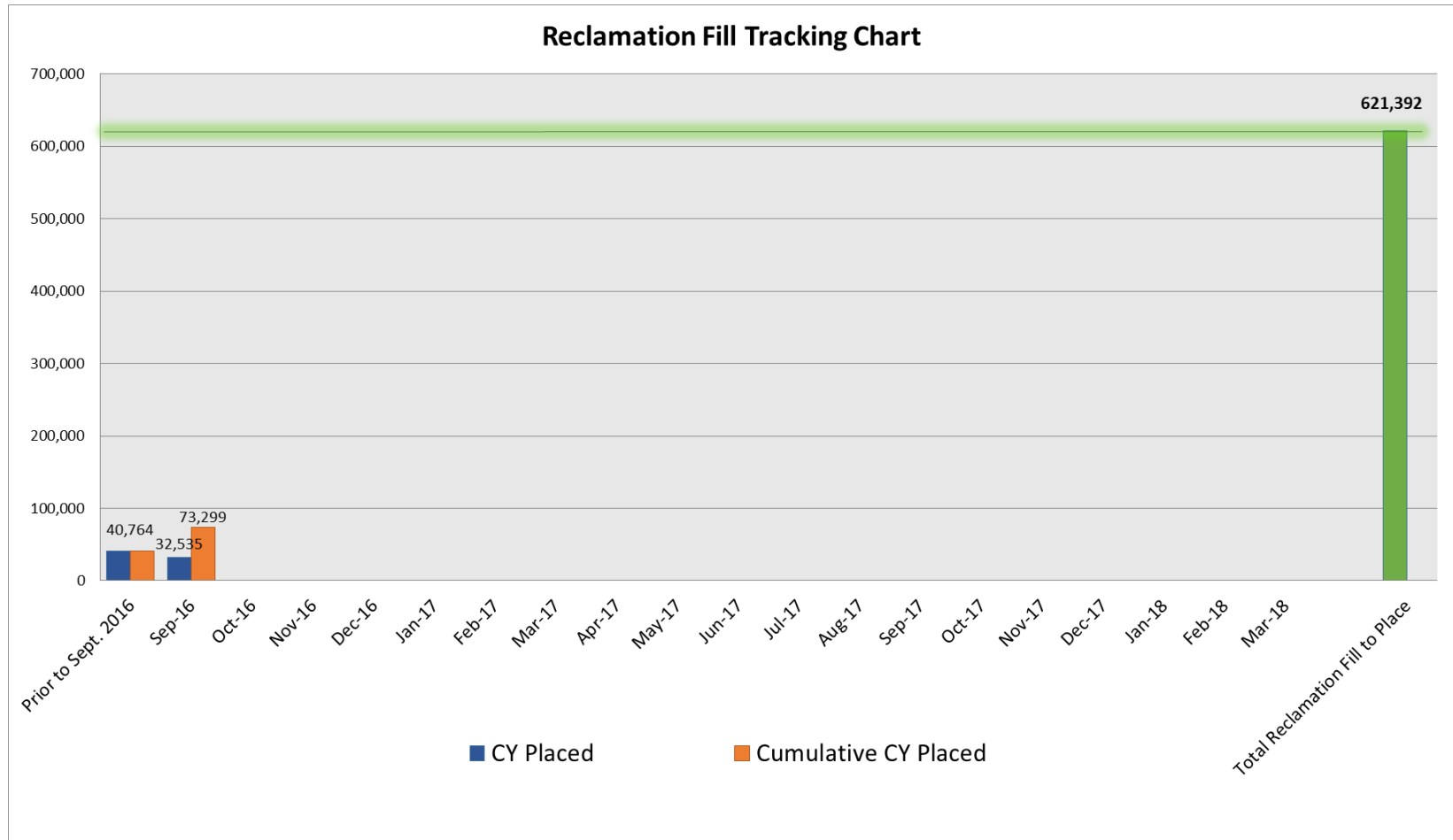
September 2016 Highlights - Continued

- Inspections done on September 1, 9, 13, 23, and 30
 - Reclamation work was conducted on the NW corner and West wall.
 - As observed on the 9/9 inspection, dry conditions led to pumping from the pit to the sump area in order to maintain 500,000 GPD to the stream.
- Reclamation and Restoration Progress
 - NHCS submitted a Corrective Action Plan on September 23 in accord with the Compliance Order.
 - 940 truck trips were made in September with 32,535 cubic yards of overburden being placed; total placed to date is 73,299 cubic yards.
 - As of the end of September, 11.8% of the total has been moved.
 - Pit area water is at the -110 MSL level, 10 feet above the floor.

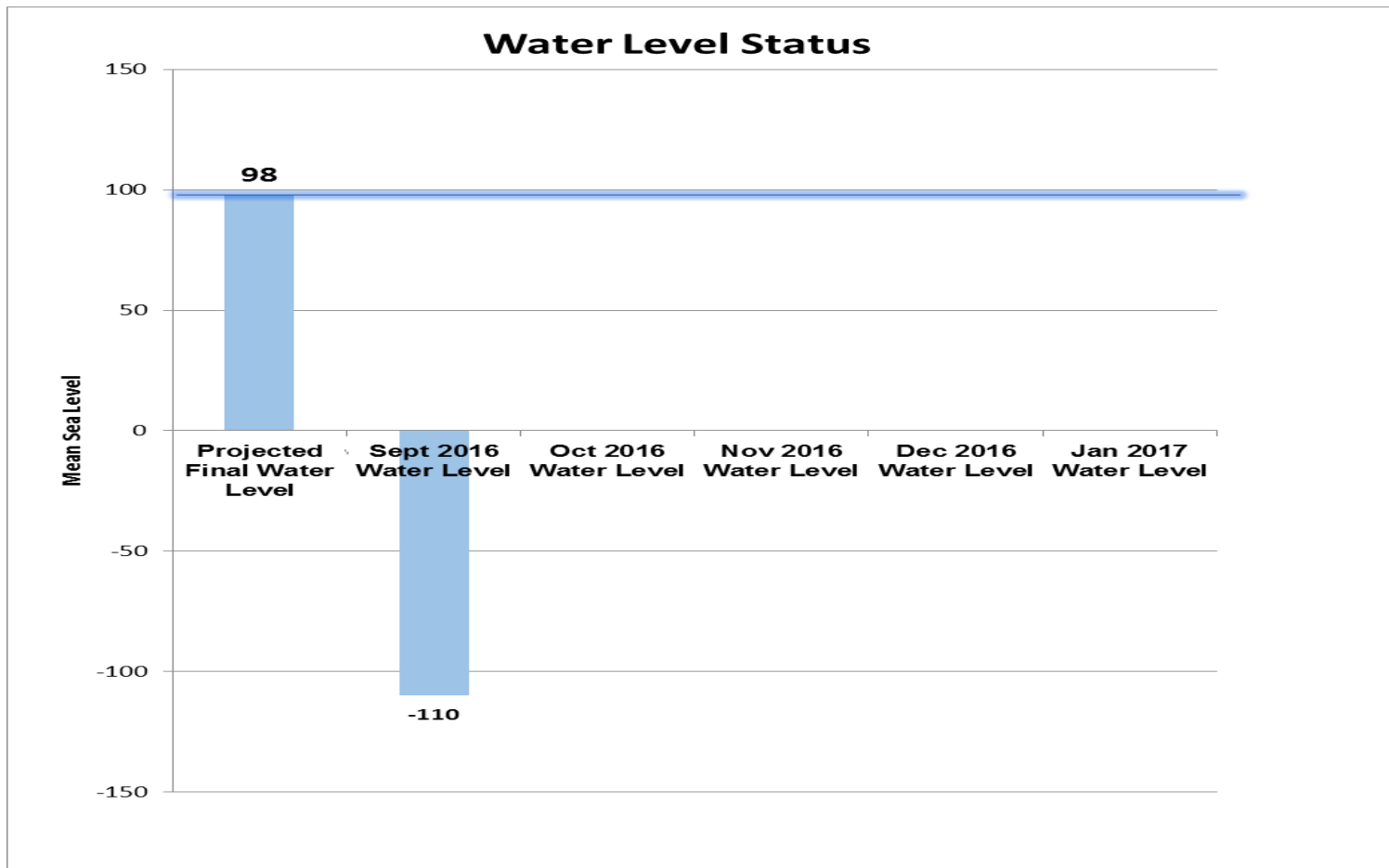
Monthly Progress Data

Year	Month	Cubic Yards Placed Overburden	Cubic Yards Placed Overburden, Cumulative	Truck Loads
End Aug. '16		40,746	40,764	
2016	September	32,535	73,299	940
	October			
	November			
	December			
2017	January			
	February			
	March			
	April			
	May			
	June			
	July			
	August			
	September			
	October			
	November			
	December			
2018	January			
	February			
	March			
Total Reclamation Fill to Place		621,392		
Percentage of total to date		11.8%		

Reclamation Fill Progress



Monthly Water Level Tracking



NHCS Bench Levels

Bench 2 60" MSL
Bench 3 10' MSL
Bench 4 -35 MSL
Bench 5 -85 MSL
Bench 6 -120 MSL



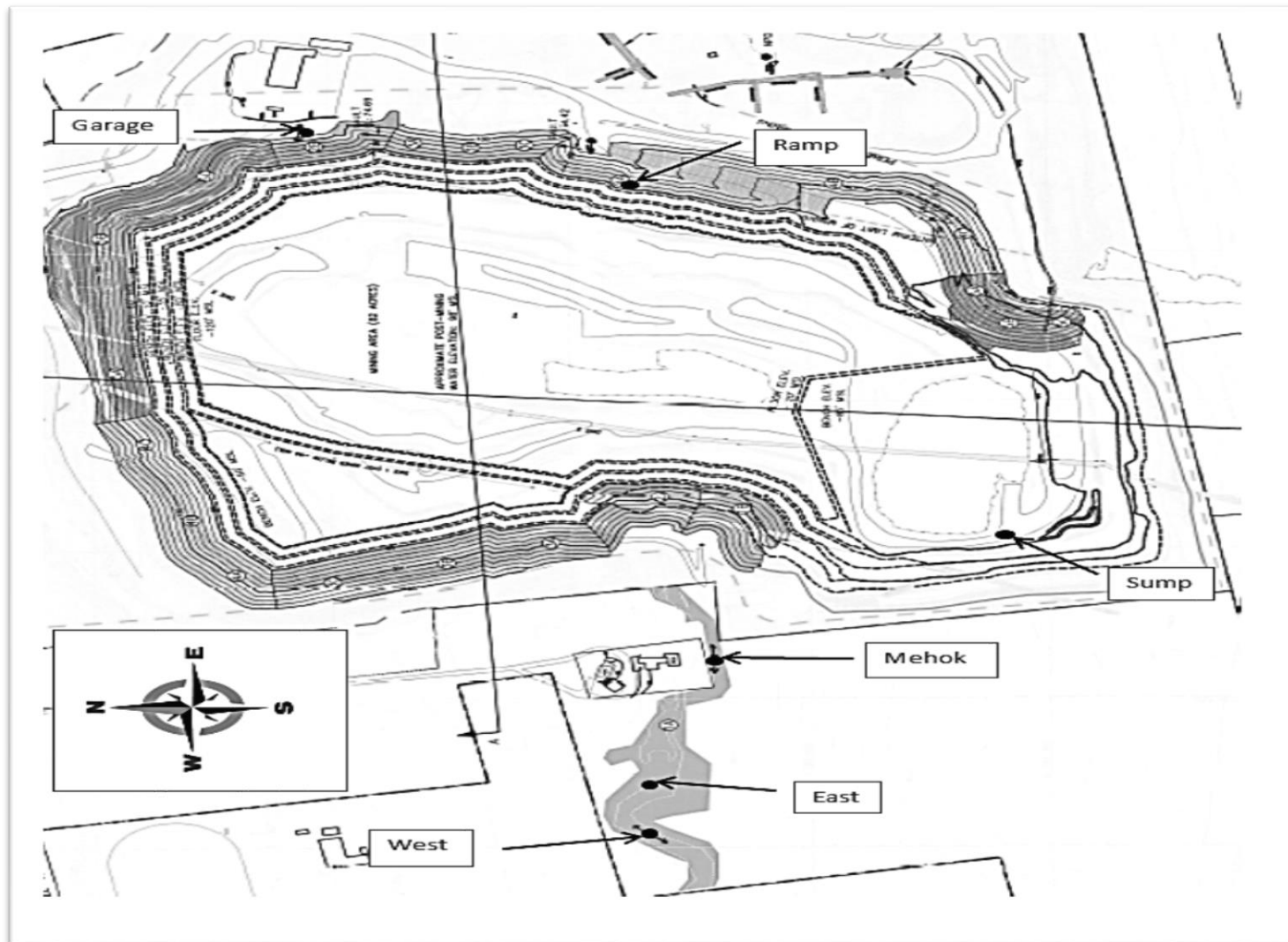
Establishing Photo Vantage Points

Photos will be taken from these geographic locations during each inspection. Progress summaries will be included with each monthly update.

Please refer to the map on the next slide.

- West looking east, west
- East looking east, west
- Mehok looking east, west
- Sump
- Ramp looking south, west
- Garage looking north, south

Six Photo Vantage Points



West, Looking East - Restoration



5/12/16

The GP-104 and GP-105 permits were issued on August 10. Recent activity on the stream has been some general repair work. Pictures will be updated when more progress is made.

West, Looking West - Restoration



5/12/16

The GP-104 and GP-105 permits were issued on August 10. Recent activity on the stream has been some general repair work. Pictures will be updated when more progress is made.

East, Looking East - Restoration



5/12/16

The GP-104 and GP-105 permits were issued on August 10. Recent activity on the stream has been some general repair work. Pictures will be updated when more progress is made.

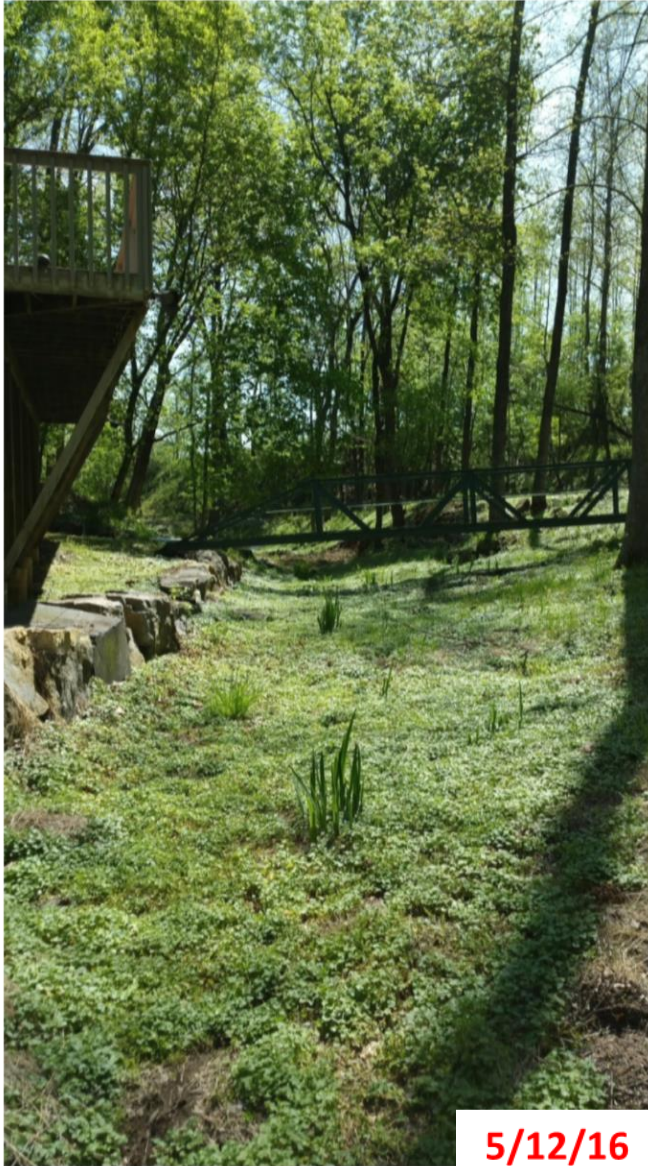
East, Looking West - Restoration



5/12/16

The GP-104 and GP-105 permits were issued on August 10. Recent activity on the stream has been some general repair work. Pictures will be updated when more progress is made.

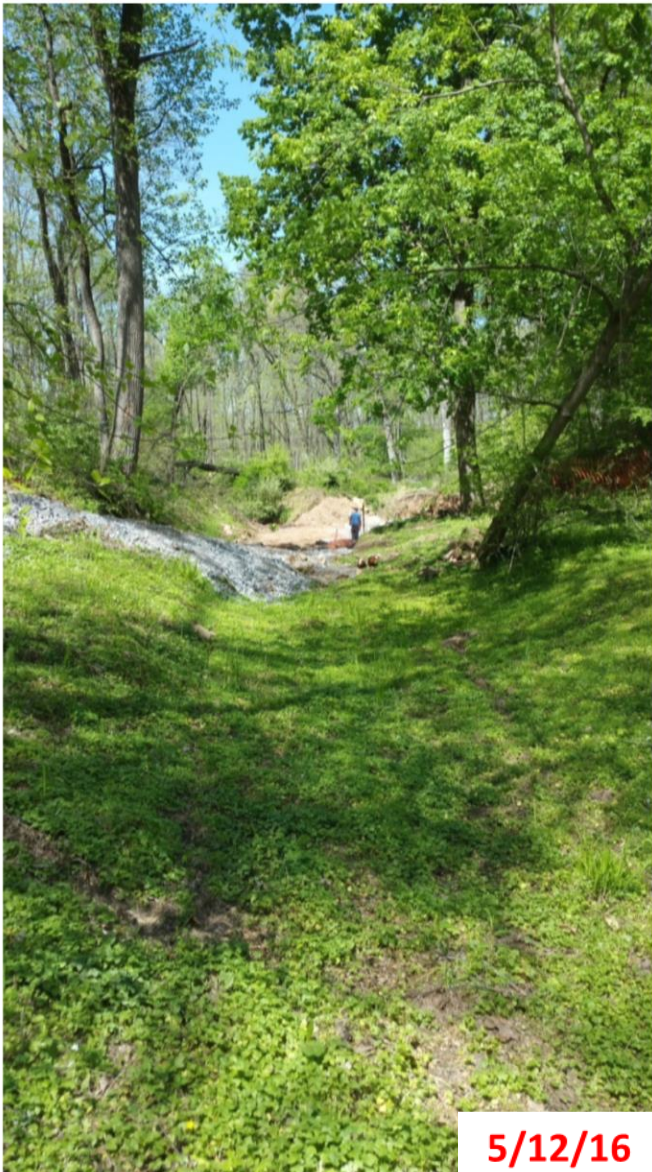
Mehok, Looking East - Restoration



5/12/16

The GP-104 and GP-105 permits were issued on August 10. Recent activity on the stream has been some general repair work. Pictures will be updated when more progress is made.

➤ Mehok, Looking West - Restoration



5/12/16

The GP-104 and GP-105 were issued on August 10. Recent activity on the stream has been some general repair work. Pictures will be updated when more progress is made.

Sump - Reclamation



5/12/16

By months end, no change in water level. Water pumped from the pit area to sump area because of dry conditions to maintain 500,000 GPD rate.



9/23/16

Ramp, Looking South - Reclamation



Sump area unchanged. Pit area to the right is up to about -110 MSL, or 10 feet above the floor.



Ramp, Looking West - Reclamation



Pit area water is at the -110 MSL level, or 10 feet above the floor. Mining continues on the third and fourth benches.



➤ Garage, Looking North - Reclamation



5/12/16

Reclamation work continues in the NW corner.



9/23/16

➤ Garage, Looking South - Reclamation



Water levels continue to rise in the pit area. Reclamation work to the top right.





pennsylvania

DEPARTMENT OF ENVIRONMENTAL PROTECTION

Active and Abandoned Mine Operations



For More Information

Monthly Updates, Inspection Reports,
Communications and more, posted as available.

Please visit: www.dep.pa.gov

Regional Resources > Southeast Region > Community Information

Tom Wolf, Governor

Patrick McDonnell, Acting Secretary