

August 17, 2022

Ms. Sharon Svitek
Program Manager, Bureau of Waste Management
Pennsylvania Department of Environmental Protection
Bureau of Waste Management
Southwest Regional Office
400 Waterfront Drive
Pittsburgh, Pennsylvania 15222-4745

Dear Ms. Svitek:

Subject: COMMENT RESPONSE - Phase I Application for Hazardous Waste Landfill
No. 7
MAX Environmental Technologies, Inc. – Yukon Facility
South Huntingdon, Westmoreland County, Pennsylvania
CEC Project 170-822.2238

On behalf of MAX Environmental Technologies, Inc. (MAX), Civil & Environmental Consultants, Inc. (CEC) is submitting an electronic copy via the Pennsylvania Department of Environmental Protection (DEP) OnBase Electronic Forms Upload Tool of the enclosed revisions to the Phase I Application for the proposed Hazardous Waste Landfill No. 7 at MAX's Yukon Facility located in South Huntingdon Township, Westmoreland County, Pennsylvania. Additionally, per DEP's previous request, hard copies of revised drawings are being distributed to the southwest regional and central DEP offices.

CEC notes a Phase I Application was submitted to the DEP on July 13, 2022. Following an administrative review, the DEP issued a Completeness Review letter dated August 15, 2022, which requested additional information/documentation. As such, the application was revised to address the DEP's recent comments. The DEP's comments from the August 15, 2022 letter are provided below verbatim in **bold** type, followed by MAX's response.

- 1. Although the cover letter states that figures and drawings associated with the permit application have been sealed by a Pennsylvania Registered Professional Engineer by means of the form HW-B being signed and sealed, DEP requests that the drawings/figures have the Professional Engineer signature and seal stamped directly on them.**

As previously stated, figures and drawings throughout the application are incomplete without a seal and signature of a PA Registered Professional Engineer. Section 502 of the Solid Waste Management Act of 1980, requires that applications for any permit shall be accompanied by such plans, designs and relevant data as the department may require and these plans, designs and data shall be prepared by a registered professional engineer. Section 7(a) of the Engineer, Land Surveyor and Geologist Registration Law of 1945 requires the seal, or a facsimile imprint of same, to be stamped on all plans, specifications, plats and reports issued by a professional engineer, professional land surveyor or professional geologist.

RESPONSE: CEC has coordinated with the DEP with regards to what drawings throughout the application need to be sealed by either a professional engineer or professional geologist. With this submission, CEC is submitting drawings, which were previously not sealed, but have now been sealed by either a professional engineer or professional geologist as appropriate. CEC notes that these drawings have been sealed in response to the DEP's above request, but no other changes to the drawings or exhibits have been made.

- 2. The seven letters to contiguous landowners that were sent via certified mail and returned to sender were resent via regular mail. These letters sent by regular mail that are not returned to sender are considered received by the landowner. Please provide a statement regarding the status of the seven letters that were resent via regular mail.**

RESPONSE: The seven (7) letters that were sent via certified mail and returned to sender were resent via regular mail. To date none of the seven (7) letters sent regular mail have been returned. A statement to document that no letters have been returned to date has been added to the permit application.

With this response, CEC and MAX understand the Phase I Application to be Administratively Complete. However, if you have questions or require additional information, please contact Mr. Carl Spadaro at (412) 445-9789 or us at (724) 327-5200. Also, we would like to offer a virtual or in-person meeting be held to resolve any remaining comments or concerns.

Very truly yours,

CIVIL & ENVIRONMENTAL CONSULTANTS, INC.



Timothy D. Mitchell, P.E.
Senior Project Manager



Eric D. Chiado, P.E.
Principal

TDM:EDC/jg
Enclosures

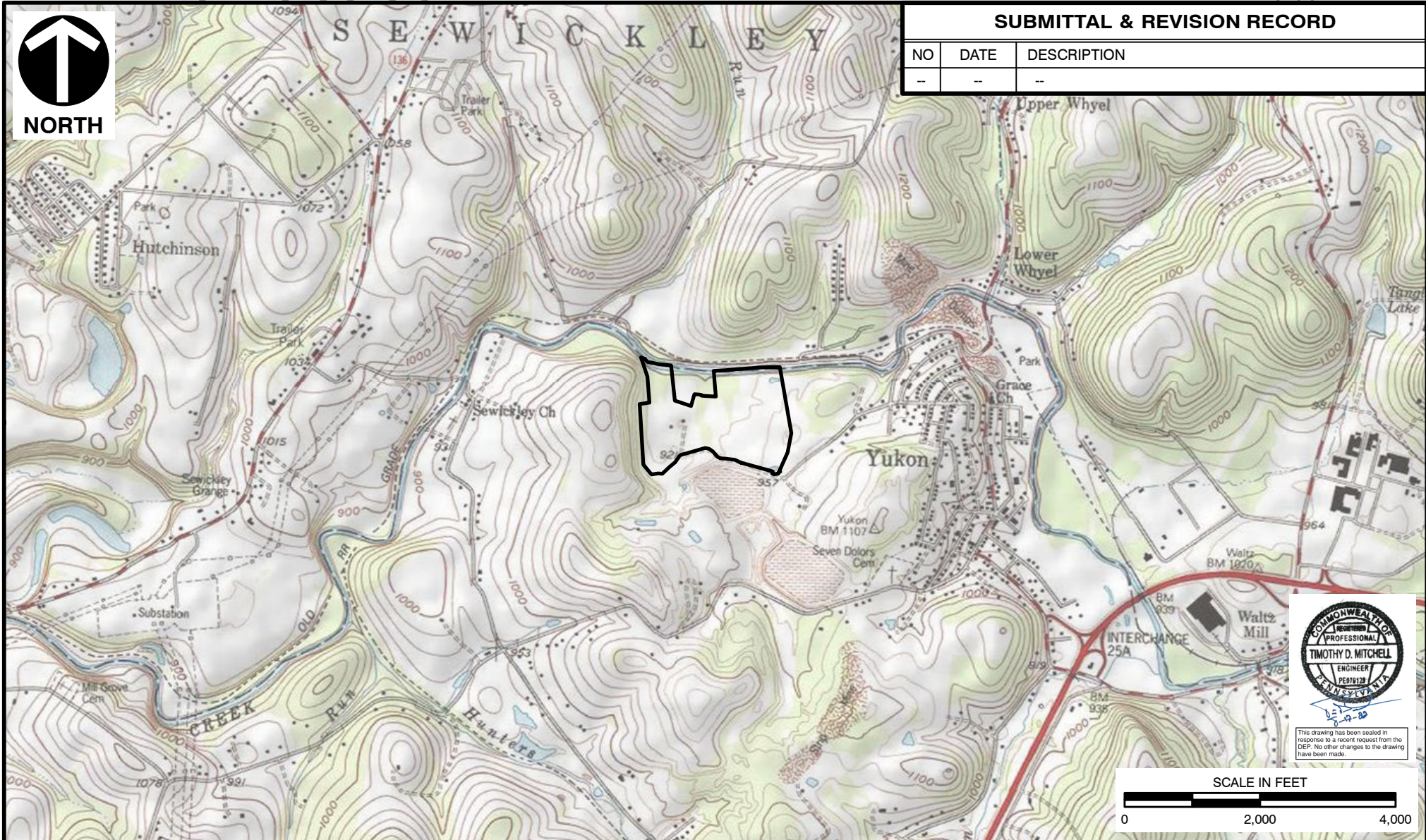
cc: Carl Spadaro (MAX)
Ken Interval, P.G. (MAX)
Bob Shawver (MAX)
William Mura (DEP) – Hard copy of drawings only
Chad Clancy (DEP) – Hard copy of drawings only

L-170822.2232.Aug17/P



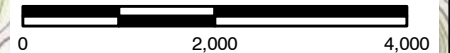
SUBMITTAL & REVISION RECORD

NO	DATE	DESCRIPTION
-	-	-



This drawing has been sealed in response to a recent request from the DEP. No other changes to the drawing have been made.

SCALE IN FEET



LEGEND

DELINEATION BOUNDARY

REFERENCE

1. USGS TOPOGRAPHIC MAP/ ARCGIS MAP SERVICE:
[HTTP://GTO.ARCGISONLINE.COM/MAPS/](http://gto.arcgis.com/maps/)
 USA_TOPO_MAPS, ACCESSED 6/20/2018.
 SMITHTON, PA QUAD.



Civil & Environmental Consultants, Inc.

4000 Triangle Lane, Suite 200 - Export, PA 15632

724-327-5200 • 800-899-3610

www.cecinc.com

MAX ENVIRONMENTAL TECHNOLOGIES, INC.
 YUKON LANDFILL NO. 7
 SOUTH HUNTINGDON TOWNSHIP
 WESTMORELAND COUNTY, PENNSYLVANIA

SITE LOCATION MAP

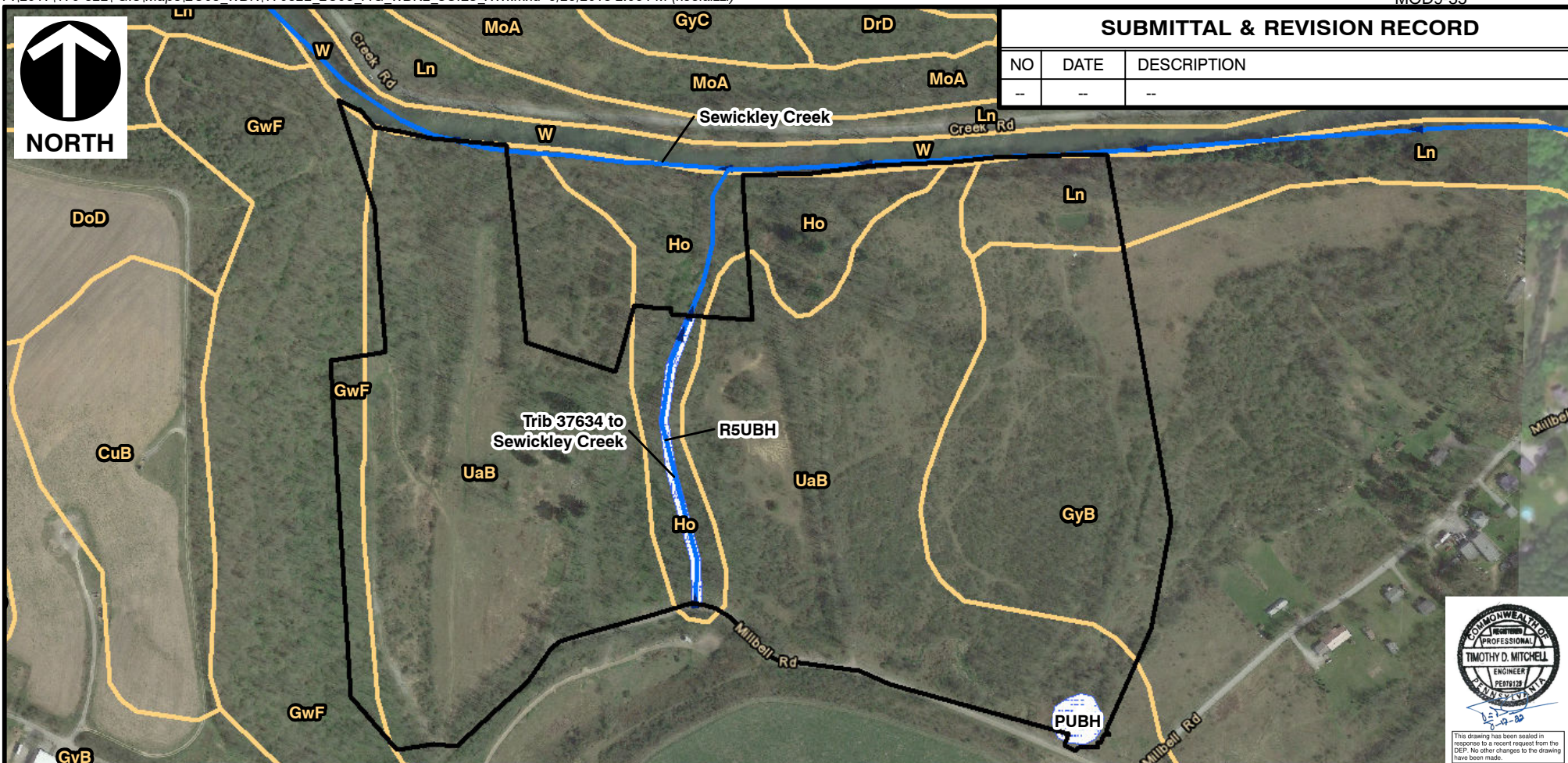
DRAWN BY:	KMC	CHECKED BY:	SVP	APPROVED BY:	MAO*	FIGURE NO:	WDR-1
DATE:	06/20/2018	SCALE:	1" = 2,000'	PROJECT NO:	170-822	* Hand signature on file	



NORTH

SUBMITTAL & REVISION RECORD

NO	DATE	DESCRIPTION
--	--	--



LEGEND

	PADEP 305B STREAM		SOIL UNIT
	NWI WETLAND		DELINEATION BOUNDARY

NOTES

1. REFERENCED INFORMATION, INCLUDING PADEP 305B STREAMS AND NWI WETLANDS, IS LIMITED TO BE ONLY WITHIN THE DELINEATION BOUNDARY.

SCALE IN FEET



REFERENCES

1. PA DEPARTMENT OF ENVIRONMENTAL PROTECTION 305B STREAM DATA, 2004.
2. U.S.D.A., N.R.C.S. SOIL SURVEY GEOGRAPHIC (SSURGO) DATABASE FOR WESTMORELAND COUNTY, PA, 2016.
3. U.S. FISH & WILDLIFE SERVICE NATIONAL WETLANDS INVENTORY (NWI) MAP SMITHTON, PA QUAD, 2016.
4. AERIAL PHOTOGRAPHY COPYRIGHT GOOGLE EARTH PRO, EXPORTED 03/07/2018 IMAGERY DATE 04/17/2016.



Civil & Environmental Consultants, Inc.

4000 Triangle Lane, Suite 200 - Export, PA 15632

724-327-5200 • 800-899-3610

www.cecinc.com

MAX ENVIRONMENTAL TECHNOLOGIES, INC.
YUKON LANDFILL NO. 7
SOUTH HUNTINGDON TOWNSHIP
WESTMORELAND COUNTY, PENNSYLVANIA

U.S. DEPARTMENT OF AGRICULTURE (USDA) SOILS
AND NATIONAL WETLANDS INVENTORY (NWI) MAP

DRAWN BY:	KMC	CHECKED BY:	SVP	APPROVED BY:	MAO*	FIGURE NO:	WDR-2
DATE:	06/26/2018	SCALE:	1" = 400'	PROJECT NO:	170-822	* Hand signature on file	



REVISION RECORD		
NO	DATE	DESCRIPTION
SUBMITTAL RECORD		
NO	DATE	DESCRIPTION

LEGEND

- ▲ TEST SITE
- EXISTING CULVERT
- EPHEMERAL STREAM
- INTERMITTENT STREAM
- PERENNIAL STREAM
- WETLAND CONTINUES BEYOND DELINEATION BOUNDARY
- POND
- WETLAND - PEM
- WETLAND - PSS
- WETLAND - PUB
- DELINEATION BOUNDARY
- INDEX CONTOUR
- INTERMEDIATE CONTOUR

REFERENCES

- PAMAP PROGRAM LIDAR DATA, 2' INTERVAL, 2006.
- AERIAL PHOTOGRAPHY COPYRIGHT GOOGLE EARTH PRO, EXPORTED 3/7/2018, IMAGERY DATE 4/17/2016.

NOTES

- THE WETLAND AND STREAM DELINEATION WAS CONDUCTED BY CIVIL & ENVIRONMENTAL CONSULTANTS, INC. ON 3/8/2018, 3/12/2018, AND 4/09/2018.
- CIVIL & ENVIRONMENTAL CONSULTANTS, INC. CONDUCTED THE WETLAND DELINEATION IN A MANNER CONSISTENT WITH THE CRITERIA CONTAINED IN THE 1987 U.S. ARMY CORPS OF ENGINEERS WETLANDS DELINEATION MANUAL (1987 MANUAL) AND THE 2012 REGIONAL SUPPLEMENT TO THE CORPS OF ENGINEERS WETLAND MANUAL, EASTERN MOUNTAINS AND PIEDMONT REGION, VERSION 2.0 (2012 REGIONAL SUPPLEMENT), AND WITH THE LEVEL OF CARE AND SKILL ORDINARILY EXERCISED BY MEMBERS OF THE ENVIRONMENTAL CONSULTING PROFESSION PRACTICING CONTEMPORANEOUSLY UNDER SIMILAR CONDITIONS IN THE LOCALITY OF THE PROJECT. IT MUST BE RECOGNIZED THE WETLAND DELINEATION WAS BASED ON FIELD OBSERVATIONS AND CIVIL & ENVIRONMENTAL CONSULTANTS' PROFESSIONAL INTERPRETATION OF THE CRITERIA IN THE 1987 MANUAL AND THE 2012 REGIONAL SUPPLEMENT. WETLAND DETERMINATIONS MAY CHANGE SUBSEQUENT TO CIVIL & ENVIRONMENTAL CONSULTANTS' DELINEATION BASED ON CHANGES TO REGULATORY CRITERIA, CHANGES TO DRAINAGE, AND OTHER HUMAN ACTIVITIES AND/OR LAND DISTURBANCES.



Civil & Environmental Consultants, Inc.
4000 Triangle Lane, Suite 200 - Export, PA 15632
Ph: 724-327-5200 - 800-899-3610
www.cecinc.com

MAX ENVIRONMENTAL TECHNOLOGIES, INC.
YUKON LANDFILL NO. 7
SOUTH HUNTINGDON TOWNSHIP
WESTMORELAND COUNTY, PENNSYLVANIA

DRAWN BY: JDM/KMC CHECKED BY: SVP APPROVED BY: MAO*
DATE: 06/20/2018 SCALE: 1" = 100' PROJECT NO: 170-822

WETLAND AND STREAM
DELINEATION MAP

FIGURE NO:
WDR-3

* Hand signature on file SHEET 1 OF 1



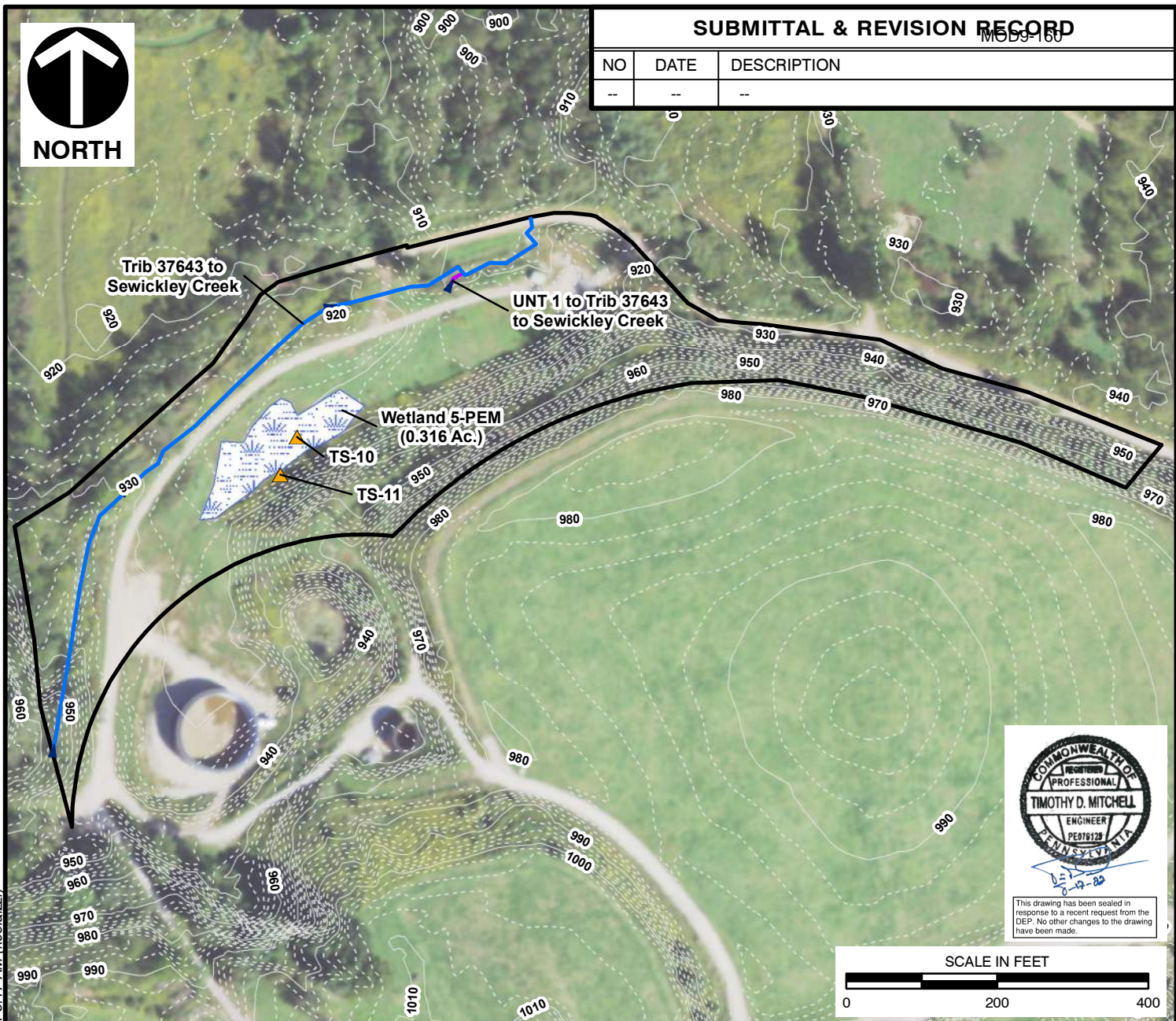
This drawing has been sealed in response to a recent request from the DEP. No other changes to the drawing have been made.



SUBMITTAL & REVISION RECORD

MOD-160

NO	DATE	DESCRIPTION
--	--	--



LEGEND

- TEST SITE
- INTERMITTENT STREAM
- PERENNIAL STREAM
- WETLAND - PEM
- DELINEATION BOUNDARY
- INDEX CONTOUR
- INTERMEDIATE CONTOUR

REFERENCES

- PA DEPARTMENT OF ENVIRONMENTAL PROTECTION 305B STREAM DATA, 2004.
- PAMAP PROGRAM LIDAR DATA, 2' INTERVAL, 2006.
- PA NAIP IMAGERY, 2019.

NOTES

- THE WETLAND AND STREAM DELINEATION WAS CONDUCTED BY CIVIL & ENVIRONMENTAL CONSULTANTS, INC. ON 03/08/2018.
- CIVIL & ENVIRONMENTAL CONSULTANTS, INC. CONDUCTED THE WETLAND DELINEATION IN A MANNER CONSISTENT WITH THE CRITERIA CONTAINED IN THE 1987 U.S. ARMY CORPS OF ENGINEERS WETLANDS DELINEATION MANUAL (1987 MANUAL) AND THE 2012 REGIONAL SUPPLEMENT TO THE CORPS OF ENGINEERS WETLAND DELINEATION MANUAL: EASTERN MOUNTAINS AND PIEDMONT REGION, VERSION 2.0 (2012 REGIONAL SUPPLEMENT), AND WITH THE LEVEL OF CARE AND SKILL ORDINARILY EXERCISED BY MEMBERS OF THE ENVIRONMENTAL CONSULTING PROFESSION PRACTICING CONTEMPORANEOUSLY UNDER SIMILAR CONDITIONS IN THE LOCALITY OF THE PROJECT. IT MUST BE RECOGNIZED THE WETLAND DELINEATION WAS BASED ON FIELD OBSERVATIONS AND CIVIL & ENVIRONMENTAL CONSULTANTS' PROFESSIONAL INTERPRETATION OF THE CRITERIA IN THE 1987 MANUAL AND THE 2012 REGIONAL SUPPLEMENT. WETLAND DETERMINATIONS MAY CHANGE SUBSEQUENT TO CIVIL & ENVIRONMENTAL CONSULTANTS' DELINEATION BASED ON CHANGES TO REGULATORY CRITERIA, CHANGES TO DRAINAGE, AND OTHER HUMAN ACTIVITIES AND/OR LAND DISTURBANCES.



Civil & Environmental Consultants, Inc.

4350 Northern Pike, Suite 141 - Monroeville, PA 15146

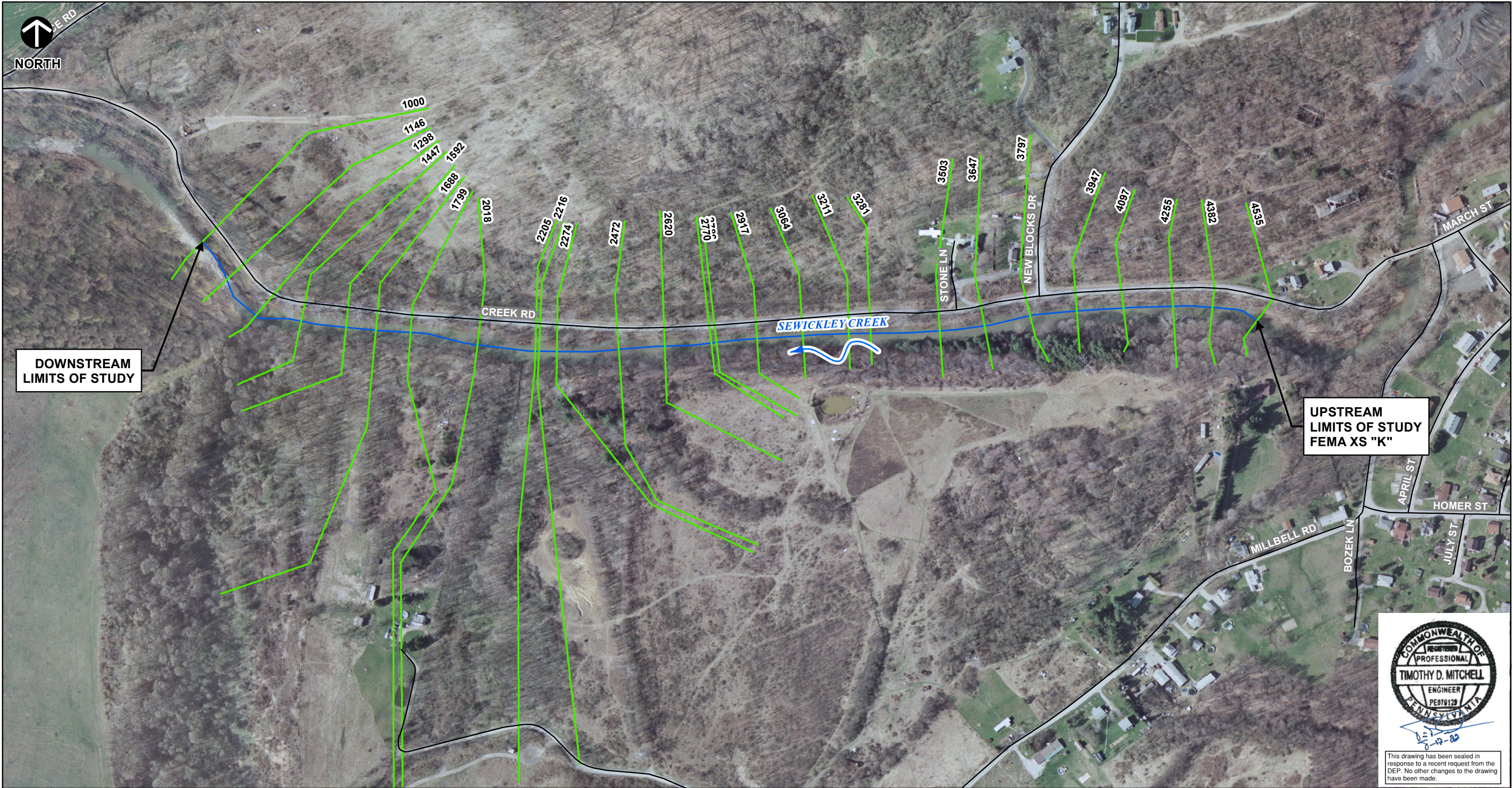
724-327-5200 • 800-899-3610

www.cecinc.com

MAX ENVIRONMENTAL TECHNOLOGIES, INC.
HAZARDOUS WASTE LANDFILL NO. 7
SOUTH HUNTINGDON TOWNSHIP
WESTMORELAND COUNTY, PENNSYLVANIA

WETLAND AND STREAM DELINEATION MAP

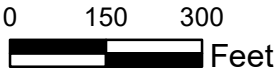
DRAWN BY:	KMC	CHECKED BY:	TDM	APPROVED BY:	PAK*	FIGURE NO:	WDR-3A
DATE:	03/05/2021	SCALE:	1" = 200'	PROJECT NO:	170-822.2200	* Hand signature on file	



SOURCE: DEPARTMENT OF CONSERVATION AND NATURAL RESOURCES (DCNR) PENNSYLVANIA MAP (PAMAP) DATED 2006 AND ACCESSED ON 7/23/2018.

Legend

- Stream Centerline
- Roads
- HEC-RAS Cross-Sections



Civil & Environmental Consultants, Inc.
5899 Montclair Boulevard - Cincinnati, OH 45150
513-985-0226 - 800-759-5614
www.cecinc.com

MAX ENVIRONMENTAL TECHNOLOGIES, INC.
LANDFILL NO. 7 DEVELOPMENT AREA
SEWICKLEY CREEK
SOUTH HUNTINGDON TOWNSHIP
WESTMORELAND COUNTY, PENNSYLVANIA

HEC-RAS GEOMETRY MAP

DRAWN BY:	MGS	CHECKED BY:	MDG	APPROVED BY:	TDM*	FIGURE NO:
DATE:	AUGUST 30, 2018	DWG SCALE:	1" = 300'	PROJECT NO:	170-822	3



This drawing has been sealed in response to a recent request from the DEP. No other changes to the drawing have been made.

SOURCE: DEPARTMENT OF CONSERVATION AND NATURAL RESOURCES (DCNR) PENNSYLVANIA MAP (PAMAP) DATED 2006 AND ACCESSED ON 7/23/2018.

FEMA

Zone Type

- NOTE:**
INUNDATION SHOWN IS FOR SUBJECT FLOODING SOURCE ONLY. IT DOES NOT NECESSARILY IDENTIFY ALL THE AREAS SUBJECT TO FLOODING, PARTICULARLY FROM LOCAL DRAINAGE SOURCES OF SMALL SIZE. THE COMMUNITY MAP REPOSITORY SHOULD BE CONSULTED FOR ADDITIONAL FLOOD HAZARD INFORMATION.

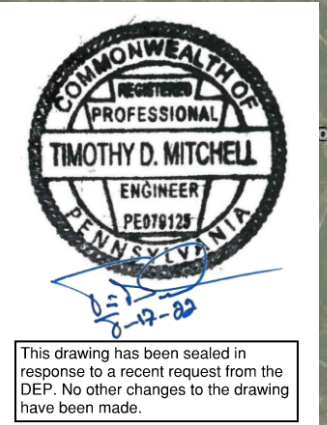
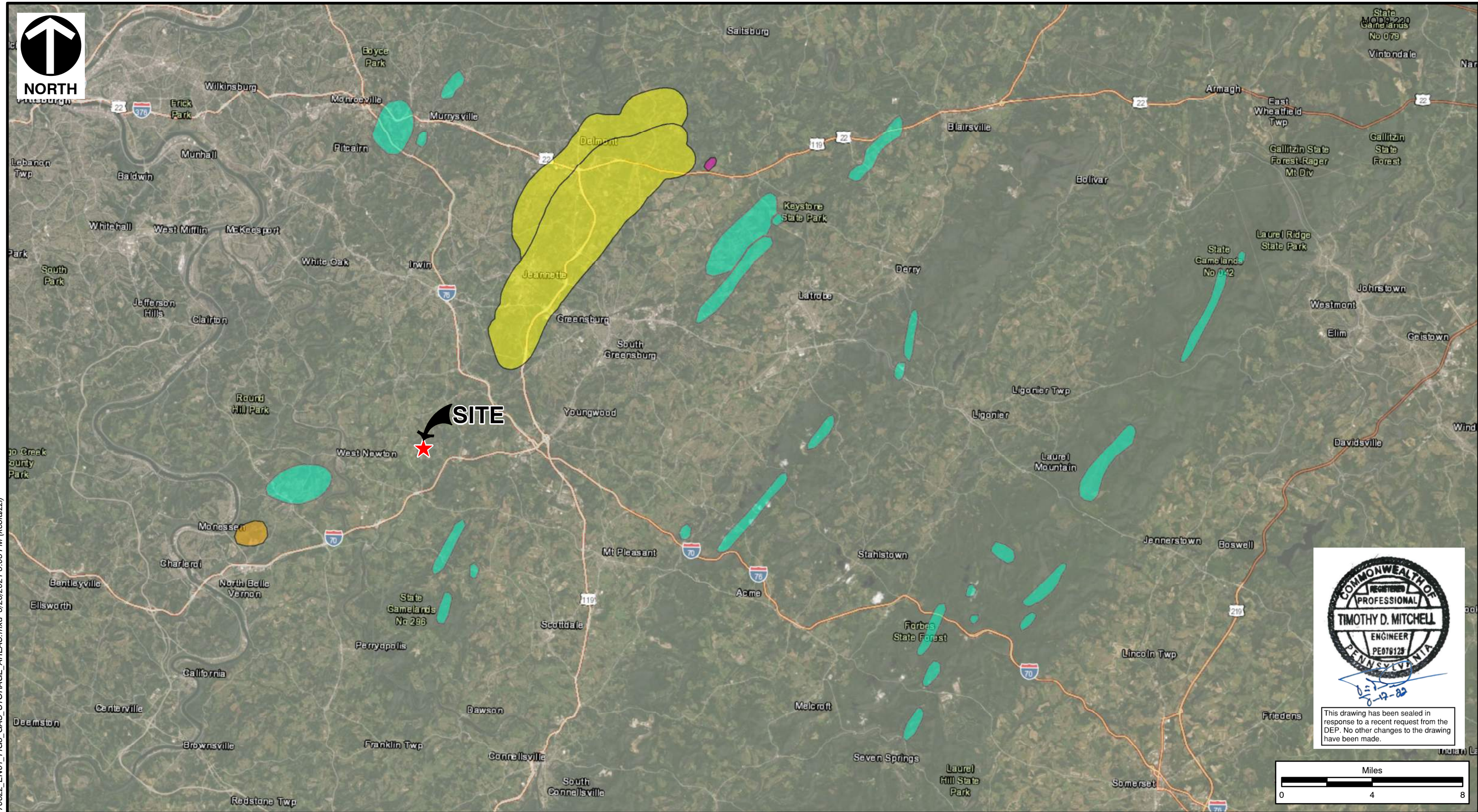


5899 Montclair Boulevard - Cincinnati, OH 45150
513-985-0226 - 800-759-5614
www.cecinc.com

EFFECTIVE VS. EXISTING CONDITIONS/CORRECTED EFFECTIVE
100-YEAR FLOODPLAIN MAP

DRAWN BY: MGS	CHECKED BY: MDG	APPROVED BY: TDM*	FIGURE NO: 4
DATE: AUGUST 30, 2018	DWG SCALE: 1" = 300'	PROJECT NO: 170-822	

Signature on File *



This drawing has been sealed in response to a recent request from the DEP. No other changes to the drawing have been made.

LEGEND

- PERMIT BOUNDARY CENTER (APPROX.)
- DETI GAS STORAGE POOL
- INACTIVE GAS STORAGE POOL
- OTHER GAS STORAGE POOL
- PRODUCTION FIELD

REFERENCE

STORAGE FIELD DATA PROVIDED BY DOMINION ENERGY TRANSMISSION GEOLOGIC SERVICES GROUP GEOGRAPHIC PROJECT

ESRI WORLD IMAGERY / ARCGIS MAP SERVICE:
HTTP://GOTO.ARCGISONLINE.COM/MAPS/WORLD_IMAGERY,
ACCESSED 3/26/2021, IMAGERY DATE: 2015.



Civil & Environmental Consultants, Inc.

333 Baldwin Road - Pittsburgh, PA 15205-9072
412-429-2324 • 800-365-2324
www.cecinc.com

DRAWN BY: CBL
DATE: 03/26/2021

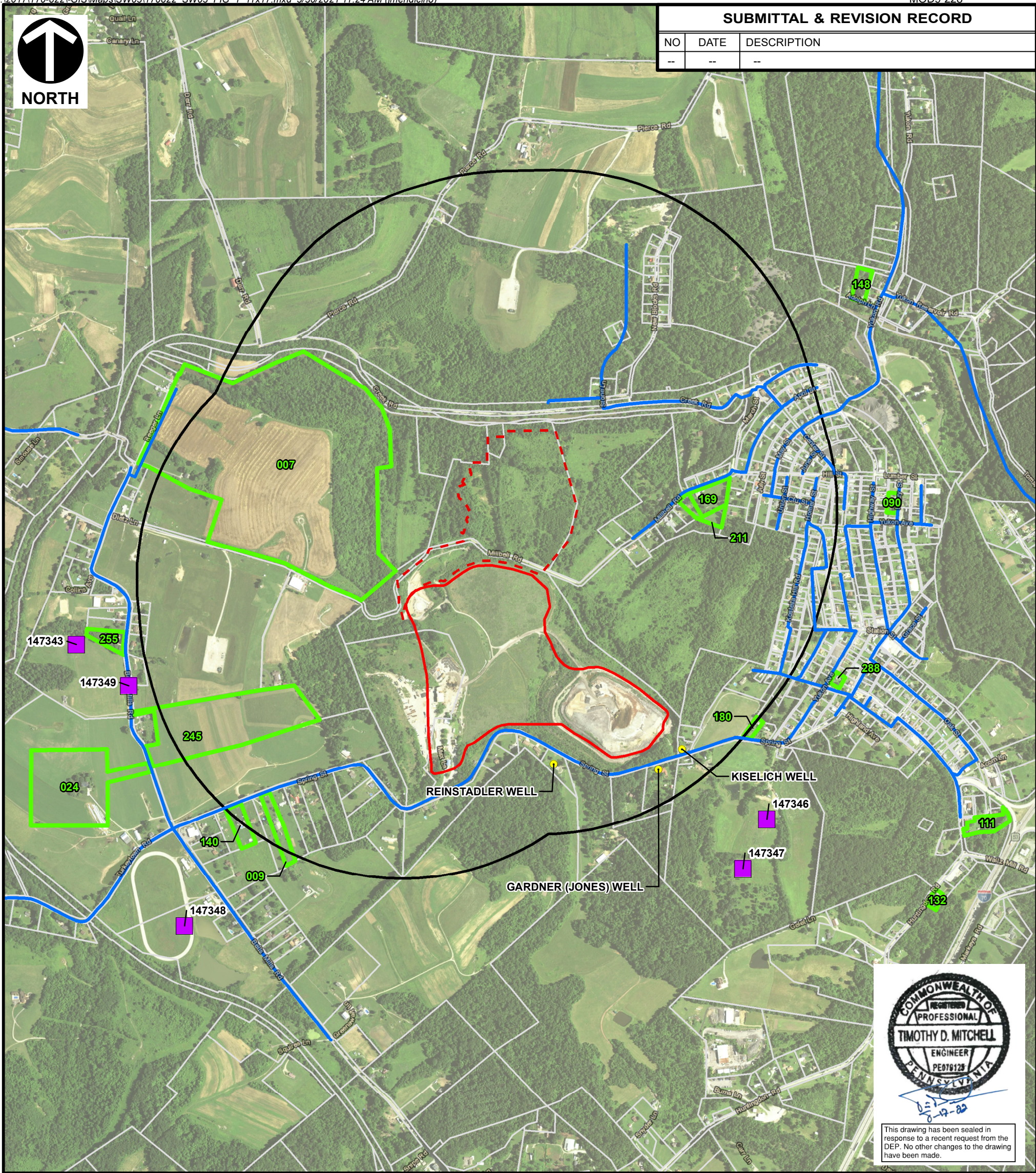
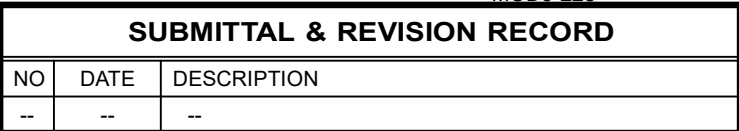
CHECKED BY: MLO
SCALE: 1" = 4 miles

MAX ENVIRONMENTAL TECHNOLOGIES, INC.
YUKON LANDFILL NO. 7
SOUTH HUNTINGDON TOWNSHIP
WESTMORELAND COUNTY, PENNSYLVANIA

GAS STORAGE POOLS MAP









APPROVED BY: TDM*
PROJECT NO: 170-822

FIGURE NO: **3**



This drawing has been sealed in response to a recent request from the DEP. No other changes to the drawing have been made.

NOTE

- | | | |
|------------------------------------------------------------------------------------|-------------------------------------------------------|--------------------------------------------------------------------------------|
|  | PREVIOUSLY MONITORED PRIVATE WELL | 1. PRIVATE RELOCATION DURING THE PRIVATE WELL WITHIN 1/2 MILE TO HAVE ACHIEVED |
|  | PAGWIS WATER WELL INVENTORY | |
|  | APPROXIMATE MUNICIPAL WATERLINE LOCATION | |
|  | EXISTING PERMIT BOUNDARY | |
|  | PROPOSED PERMIT BOUNDARY | |
|  | PROPOSED PERMIT BOUNDARY 1/2 MILE BUFFER | |
|  | PRIVATE WATER WELL SURVEY RESPONSE PROPERTY LOCATIONS | |
|  | APPROXIMATE PARCEL BOUNDARY | |

1. PRIVATE RESIDENCES IDENTIFIED WITH WELLS/SPRINGS DURING THE PRIVATE WATER WELL SURVEY, AS WELL AS PRIVATE WELLS PREVIOUSLY MONITORED BY MAX WITHIN 1/2 MILE OF THE PROPOSED WERE DETERMINED TO HAVE ACCESS TO PUBLIC WATER.

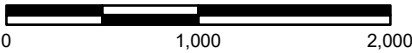
SURVEY RESPONSE PROPERTY LOCATIONS

ID No.	First Name
007	Babich, Angeline
009	Bacha, George M.
024	Bobich, Carol & Charles
090	Gilkey, Casey
111	Hirn, Vivian L.
132	Poctratsky, Linda
140	Kline, David C.
148	Kosica, Karen E.
169	McDonald, Harry
180	McGrath, Beverly V.
211	Repnik, Karen & Kerry L.
245	Smouse, Robert G.
255	Swank, Smythe R.
288	Yemc, Donna

PAGWIS WATER WELLS

WELL ID	OWNER
147343	VANDERSCHOTT VAN
147346	MILL SERVICE
147347	MILL SERVICE IN
147348	RUPP RAYMOND
147349	KODRIN CARL

SCALE IN FEET



REFERENCES

1. WELL LOCATIONS FROM PADEP EMAP, 2018.
2. WATERLINE LOCATIONS PROVIDED BY THE MUNICIPAL WATER AUTHORITY OF WESTMORELAND COUNTY, 2018
3. PA NAIP IMAGERY, 2017.



Civil & Environmental Consultants, Inc.

4350 Northern Pike, Suite 141 - Monroeville, PA 15146
724-327-5200 • 800-899-3610
www.cecinc.com

MAX ENVIRONMENTAL TECHNOLOGIES INC
YUKON LANDFILL NO. 7
SOUTH HUNTINGDON TOWNSHIP
WESTMORELAND COUNTY, PENNSYLVANIA

WELL LOCATIONS

DRAWN BY:	KMC	CHECKED BY:	DVS	APPROVED BY:	TDM*	FIGURE NO:
DATE:	03/26/2021	SCALE:	1" = 1,000'	PROJECT NO:	170-822	* Hand signature on file

* Hand signature
on file

1



MOD9-230

Kelly
RunPinkerton
Run

750779

Sewickley
CreekHunters
RunLick
RunPainters
Run**LEGEND**

- SURFACE WATER WITHDRAWAL
- ⋯ SEWICKLEY CREEK,
5 STREAM MILES FROM FACILITY
- STREAMS
- EXISTING PERMIT BOUNDARY
- PROPOSED PERMIT BOUNDARY
- EXISTING PROPERTY BOUNDARY

REFERENCES

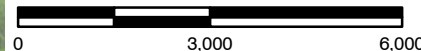
1. PA DEPARTMENT OF ENVIRONMENTAL PROTECTION
305B STREAM DATA, 2004.
2. SURFACE WATER DATA FROM PADEP EMAP, 2018.
3. PA NAIP IMAGERY, 2017.



This drawing has been sealed in
response to a recent request from the
DEP. No other changes to the drawing
have been made.

SITE ID	CLIENT NAME	USE
750779	CHEVRON APPALACHIA LLC	OIL AND GAS

SCALE IN FEET

**Civil & Environmental Consultants, Inc.**

4000 Triangle Lane, Suite 200 - Export, PA 15632

724-327-5200 • 800-899-3610

www.cecinc.com

MAX ENVIRONMENTAL TECHNOLOGIES INC
YUKON LANDFILL NO. 7
SOUTH HUNTINGDON TOWNSHIP
WESTMORELAND COUNTY, PENNSYLVANIA

SURFACE WATER WITHDRAWAL LOCATIONS

DRAWN BY:	KMC	CHECKED BY:	DVS	APPROVED BY:	DRAFT*	FIGURE NO:	2
DATE:	02/25/2021	SCALE:	1" = 3,000'	PROJECT NO:	170-822	* Hand signature on file	



LEGEND

- APPROXIMATE PROPERTY LINE
- MD-A MINE DISCHARGE MONITORING LOCATION
- ⊕ P-707-PC MONITORING WELL (2018)
- ⊕ MW4 MONITORING WELL (HISTORIC)
- ▲ W-5 MONITORING WELL (HISTORIC)
- ⊕ PW-1 PUMPING WELL
- ⊕ TP-701 TEST PIT
- █ MINE BARRIER WALL
- . - . - . PROPOSED FACILITY SITE BOUNDARY
- ⊕ CROSS SECTION LOCATION



This drawing has been sealed in response to a recent request from the DEP. No other changes to the drawing have been made.



Civil & Environmental Consultants, Inc.

4000 Triangle Lane · Suite 200 · Export, PA 15632

724-327-5200 · 800-899-3610

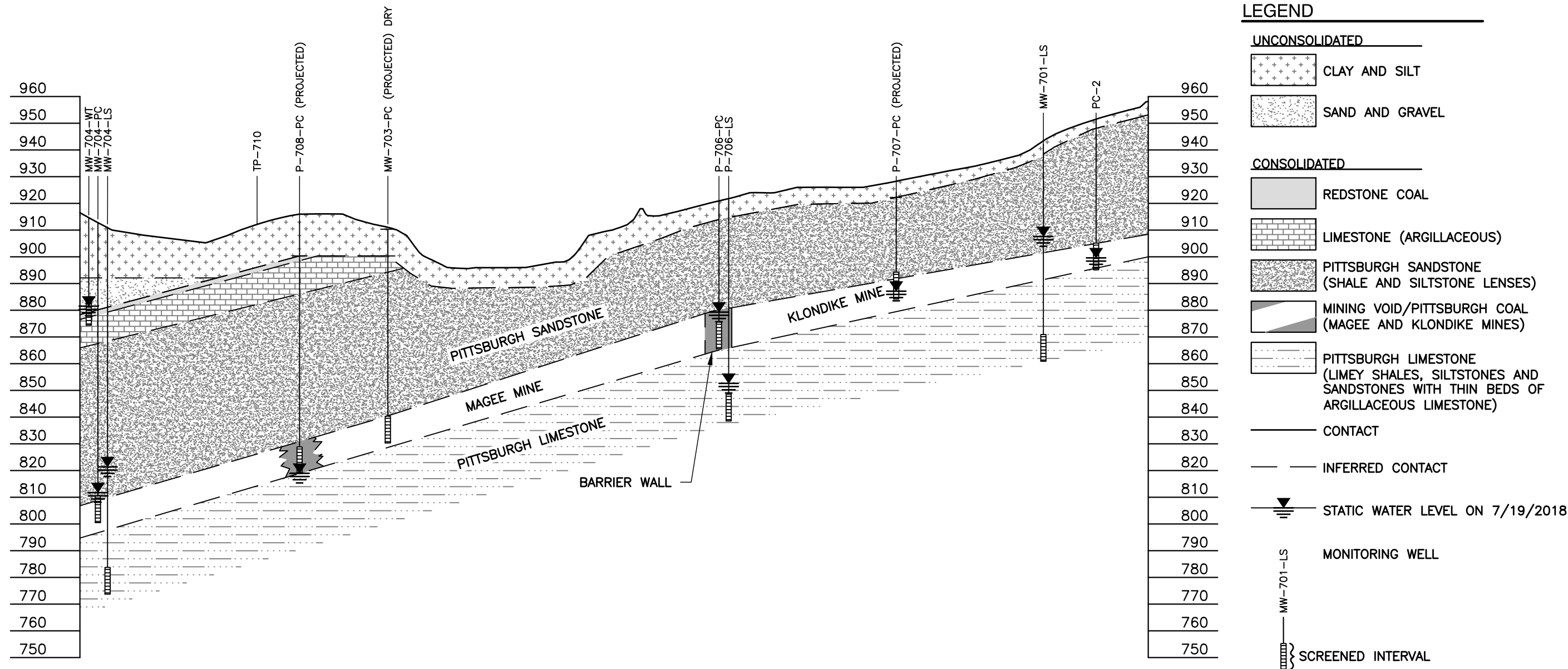
www.cecinc.com *HAND SIGNATURE ON FILE

MAX ENVIRONMENTAL TECHNOLOGIES, INC.
YUKON FACILITY
PROPOSED LANDFILL NO. 7
WESTMORELAND COUNTY, PENNSYLVANIA

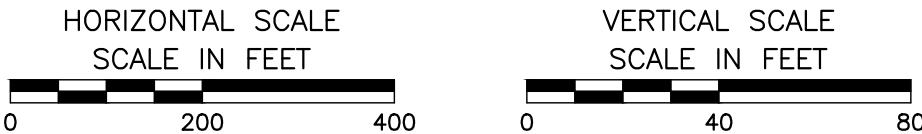
SITE LAYOUT

DRAWN BY:	JML	CHECKED BY:	BJH	APPROVED BY:	MLO*	FIGURE NO.:	1
DATE:	06/22/2018	DWG SCALE:	AS SHOWN	PROJECT NO:	170-822		

P:\2017\170-822\--CAUD\DWG\GTD3\170822-GTD3-FIGURE 1.dwg{2} LS{9/14/2018 - scol} - LP: 9/14/2018 10:34 AM



SECTION A - A



GEOLOGIC CONDITIONS

THE BORING LOGS AND RELATED INFORMATION PRESENTED HEREIN DEPICT SUBSURFACE CONDITIONS AT THE TEST BORING LOCATIONS AND AT THE TIME OF DRILLING. SOIL CONDITIONS AT OTHER LOCATIONS MAY DIFFER.

GEOLOGIC CORRELATIONS SHOWN BETWEEN TEST BORINGS GENERALLY ARE BASED ON STRAIGHT-LINE INTERPOLATION. ACTUAL CONDITIONS BETWEEN TEST BORINGS MAY DIFFER.



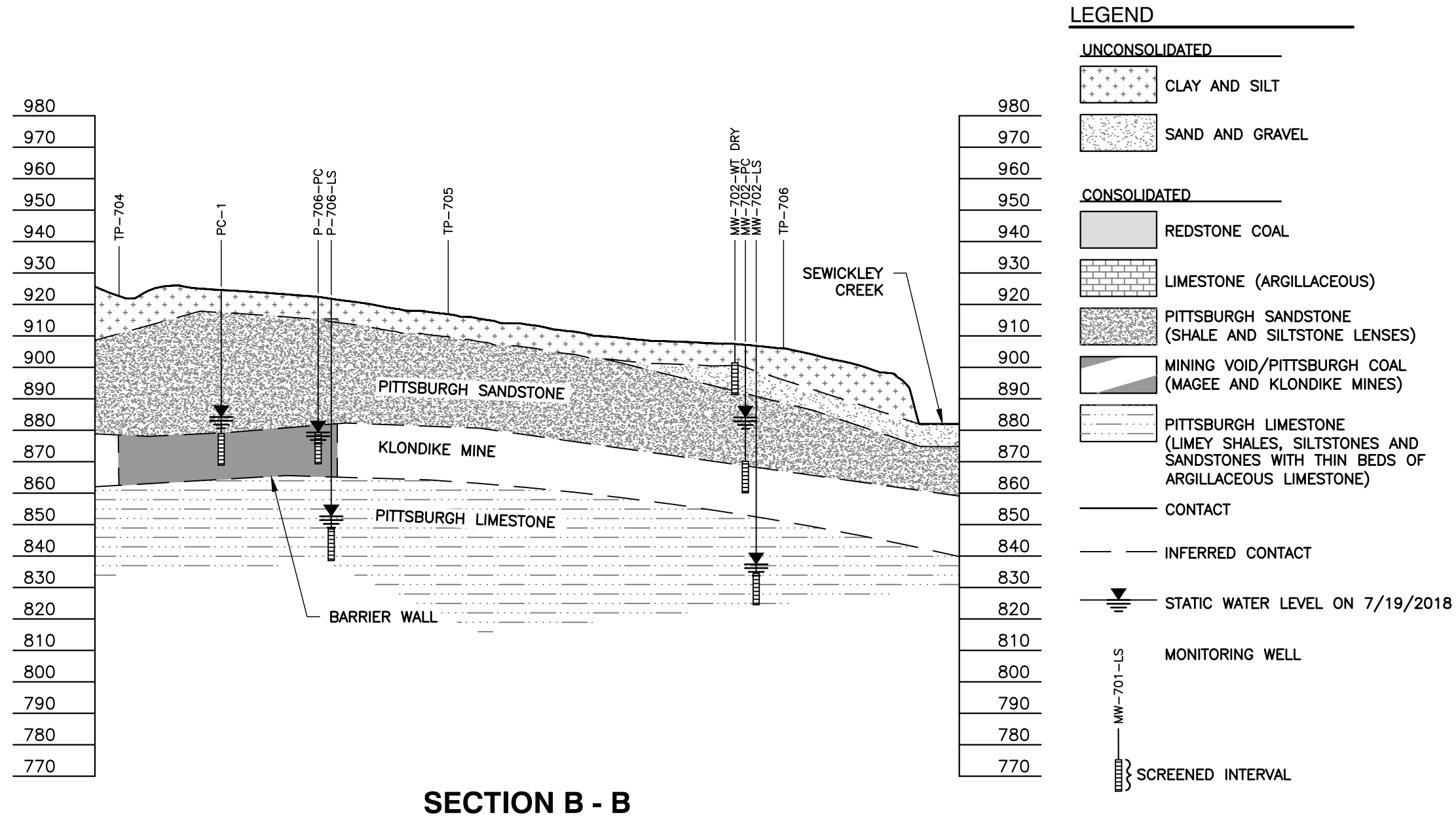
This drawing has been sealed in response to a recent request from the DEP. No other changes to the drawing have been made.

C&E
Civil & Environmental Consultants, Inc.
4000 Triangle Lane · Suite 200 · Export, PA 15632
724-327-5200 · 800-899-3610
www.cecinc.com *HAND SIGNATURE ON FILE

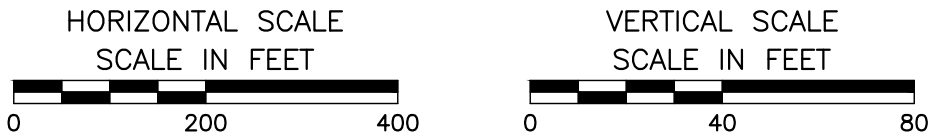
MAX ENVIRONMENTAL TECHNOLOGIES, INC.
YUKON FACILITY
PROPOSED LANDFILL NO. 7
WESTMORELAND COUNTY, PENNSYLVANIA

GEOLOGIC CROSS SECTION A-A

DRAWN BY: JML CHECKED BY: BJH APPROVED BY: MLO* FIGURE NO.:
DATE: 06/22/2018 DWG SCALE: AS SHOWN PROJECT NO: 170-822



SECTION B - B



GEOLOGIC CONDITIONS

THE BORING LOGS AND RELATED INFORMATION PRESENTED HEREIN DEPICT SUBSURFACE CONDITIONS AT THE TEST BORING LOCATIONS AND AT THE TIME OF DRILLING. SOIL CONDITIONS AT OTHER LOCATIONS MAY DIFFER.

GEOLOGIC CORRELATIONS SHOWN BETWEEN TEST BORINGS GENERALLY ARE BASED ON STRAIGHT-LINE INTERPOLATION. ACTUAL CONDITIONS BETWEEN TEST BORINGS MAY DIFFER.

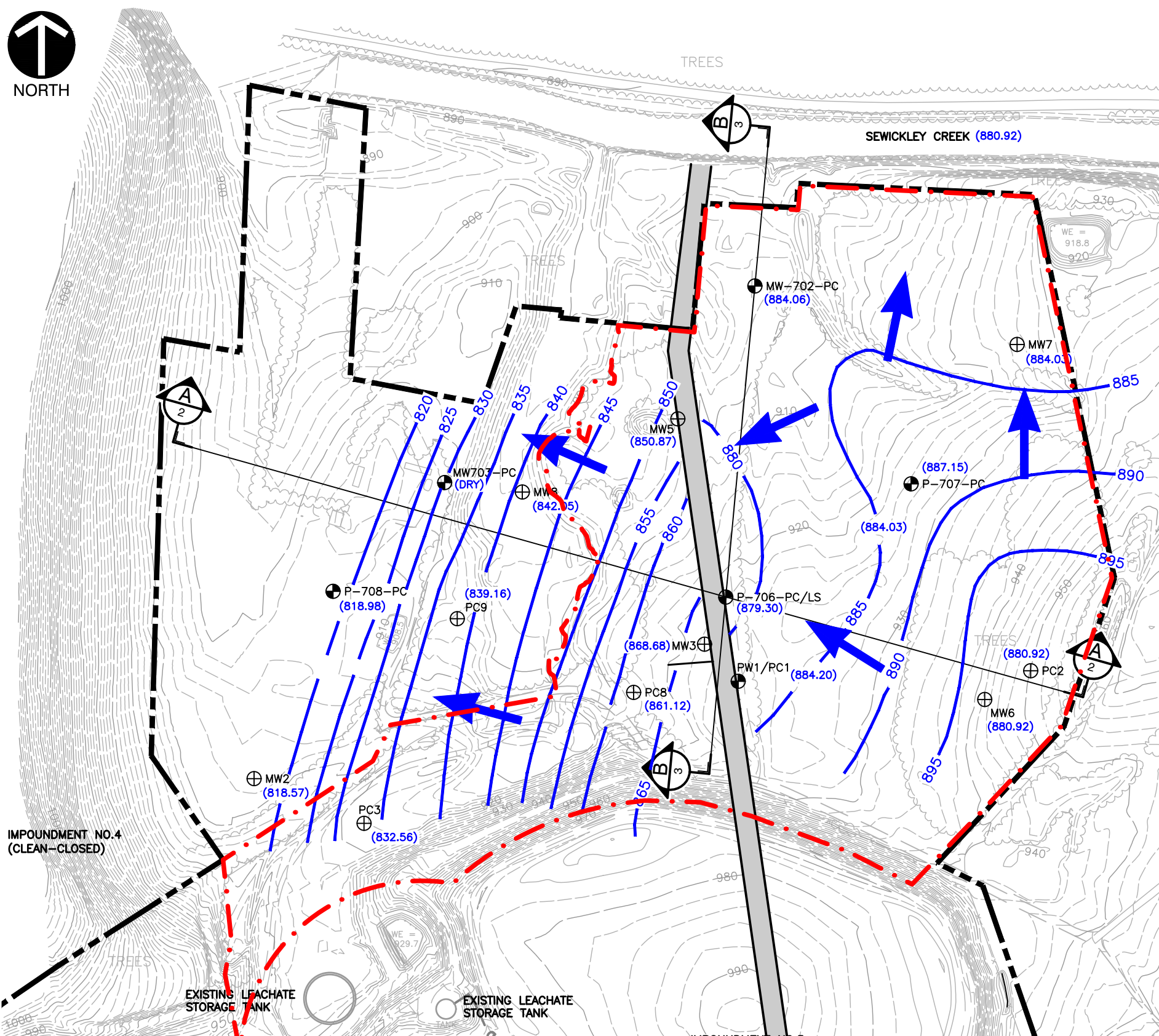


This drawing has been sealed in response to a recent request from the DEP. No other changes to the drawing have been made.

Civil & Environmental Consultants, Inc.
4000 Triangle Lane · Suite 200 · Export, PA 15632
724-327-5200 · 800-899-3610
www.cecinc.com *HAND SIGNATURE ON FILE

DRAWN BY:	JML	CHECKED BY:	BJH	APPROVED BY:	MLO*	FIGURE NO.:	3
DATE:	06/22/2018	DWG SCALE:	AS SHOWN	PROJECT NO:	170-822		

MAX ENVIRONMENTAL TECHNOLOGIES, INC.
YUKON FACILITY
PROPOSED LANDFILL NO. 7
WESTMORELAND COUNTY, PENNSYLVANIA
GEOLOGIC CROSS SECTION B-B



LEGEND

- APPROXIMATE PROPERTY LINE
- MD-A MINE DISCHARGE MONITORING LOCATION
- P-707-PC MONITORING WELL (2018)
- ⊕ MW4 MONITORING WELL (HISTORIC)
- ▲ W-5 MONITORING WELL (HISTORIC)
- ⊕ PW-1 PUMPING WELL
- ⊕ TP-701 TEST PIT
- █ MINE BARRIER WALL
- . - . - . PROPOSED FACILITY SITE BOUNDARY
- ⊕ A 2 CROSS SECTION LOCATION
- (895.17) WATER ELEVATION MEASURED 7/19/2018
- - - - - WATER TABLE CONTOUR, DASHED WHERE INFERRED
- ➡ APPROXIMATE GROUNDWATER FLOW DIRECTION



This drawing has been sealed in response to a recent request from the DEP. No other changes to the drawing have been made.

GROUNDWATER CONDITIONS

THE WATER LEVELS PRESENTED HEREIN ARE APPLICABLE TO THE LOCATION AND TIME OF MEASUREMENT. WATER LEVELS MAY FLUCTUATE THROUGH TIME.

POTENTIOMETRIC CONTOURS GENERATED FROM THIS DATA ARE CONSTRUCTED BY INTERPOLATION BETWEEN POINTS OF KNOWN STATIC WATER LEVEL ELEVATIONS AND USING KNOWLEDGE OF SPECIFIC SITE CONDITIONS. ACTUAL STATIC WATER LEVELS AT LOCATIONS BETWEEN THE MONITORING POINTS MAY DIFFER FROM THOSE DEPICTED.



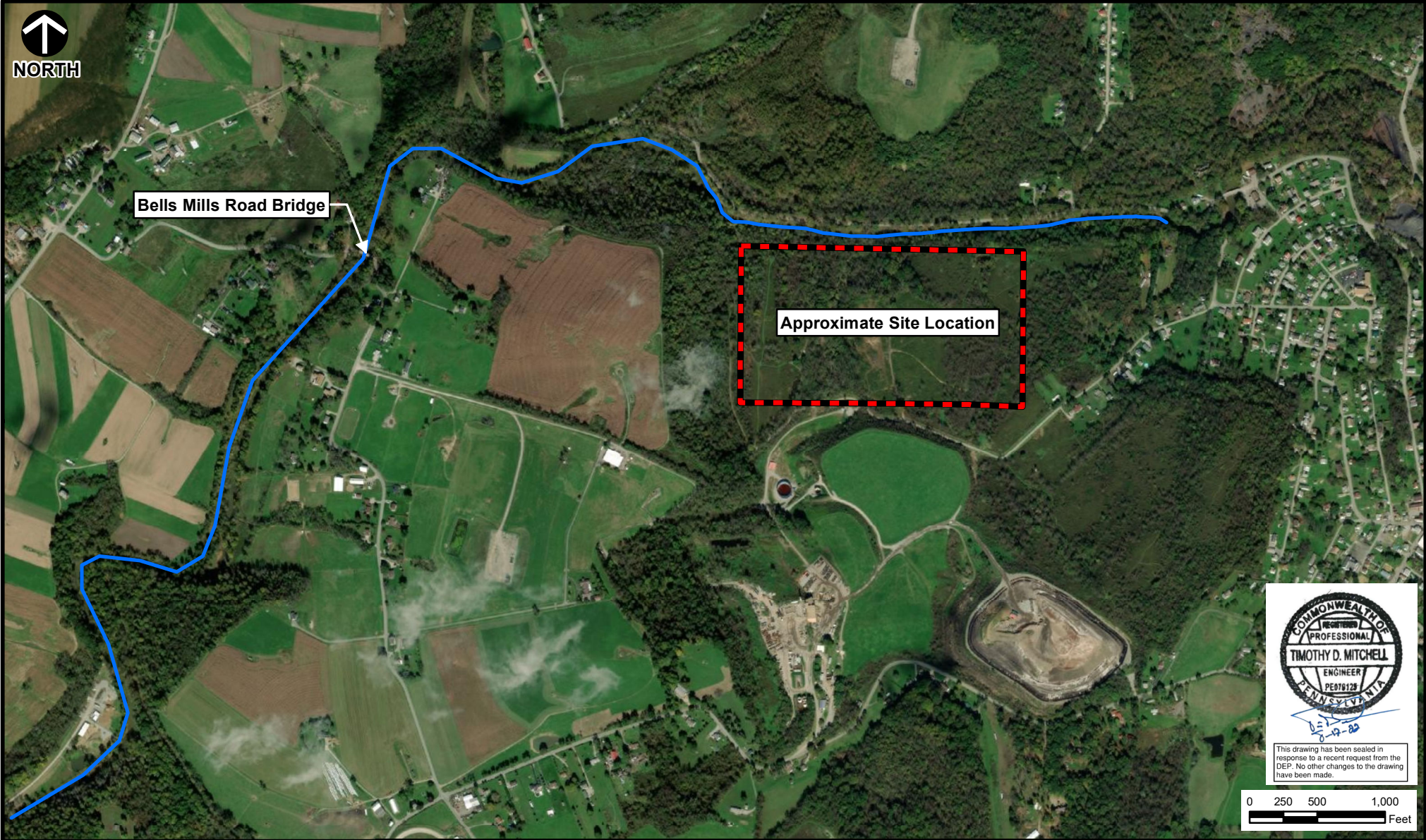


Civil & Environmental Consultants, Inc.
4000 Triangle Lane · Suite 200 · Export, PA 15632
724-327-5200 · 800-899-3610
www.cecinc.com *HAND SIGNATURE ON FILE

MAX ENVIRONMENTAL TECHNOLOGIES, INC.
YUKON FACILITY
PROPOSED LANDFILL NO. 7
WESTMORELAND COUNTY, PENNSYLVANIA

WATER TABLE CONTOURS

DRAWN BY:	JML	CHECKED BY:	BJH	APPROVED BY:	MLO*	FIGURE NO.:	4
DATE:	06/22/2018	DWG SCALE:	AS SHOWN	PROJECT NO:	170-822		



LEGEND

 Sewickley Creek

 Site

REFERENCE

USGS TOPOGRAPHIC MAP/ ARCGIS MAP SERVICE:
[HTTP://GOTO.ARCGISONLINE.COM/MAPS/](http://gto.arcgis.com/maps/)
 USA_TOPO_MAPS, ACCESSED 2/25/2021



Civil & Environmental Consultants, Inc.

4350 Northern Pike - Suite 141 - Monroeville, PA 15146

734-327-5200 • 800-899-3610

www.cecinc.com

MAX ENVIRONMENTAL TECHNOLOGIES, INC.
LANDFILL NO. 7 DEVELOPMENT AREA
SEWICKLEY CREEK
WESTMORELAND COUNTY, PENNSYLVANIA

**BELLS MILLS COVERED
 BRIDGE LOCATION MAP**

DRAWN BY:	CCP	CHECKED BY:	MDG	APPROVED BY:	MDG	FIGURE NO:	1
DATE:	February 25, 2021	SCALE:	1" = 1,000'	PROJECT NO:	170-822		

August 17, 2022

Ms. Sharon Svitek
Program Manager, Bureau of Waste Management
Pennsylvania Department of Environmental Protection
Bureau of Waste Management
Southwest Regional Office
400 Waterfront Drive
Pittsburgh, Pennsylvania 15222-4745

Dear Ms. Svitek:

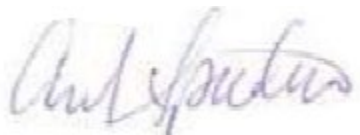
Subject: Contiguous Landowner Notifications
Phase I Application for Haz. Waste Landfill No. 7
MAX Environmental Technologies, Inc. – Yukon Facility
South Huntingdon, Westmoreland County, Pennsylvania
CEC Project 170-822.2232

This letter is intended to document that the seven (7) letters, associated with the required continuous landowner notifications, which were originally sent via certified mail, and were then returned to sender, were resent via regular mail. The seven owners receiving the notification letters via regular mail include:

- Virginia & Sampson Harris;
- Charles & Kathleen Hoadwonic;
- Cynthia Kelley;
- George & Holly Knepper;
- Matthew Sever Jr.;
- John & Marsha Tomay; and
- Craig Zafaras.

To date, none of the seven (7) contiguous landowner notification letters sent via regular mail have been returned.

Sincerely,

A handwritten signature in blue ink, appearing to read "Carl Spadaro", is positioned above the printed name.

Carl Spadaro
Environmental General Manager
MAX Environmental Technologies, Inc.