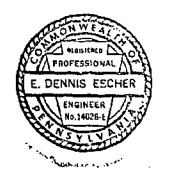


DETAIL #1
DISPOSAL TRENCH
MONITORING WELL
(SEE LOCATION @ LEFT)

NOTE: CONTOUR ELEVATIONS REFERENCED TO PEC DWG. 029-01-G1, AND DO NOT CORRESPOND TO U.S. G.S. TOPO MAPS.

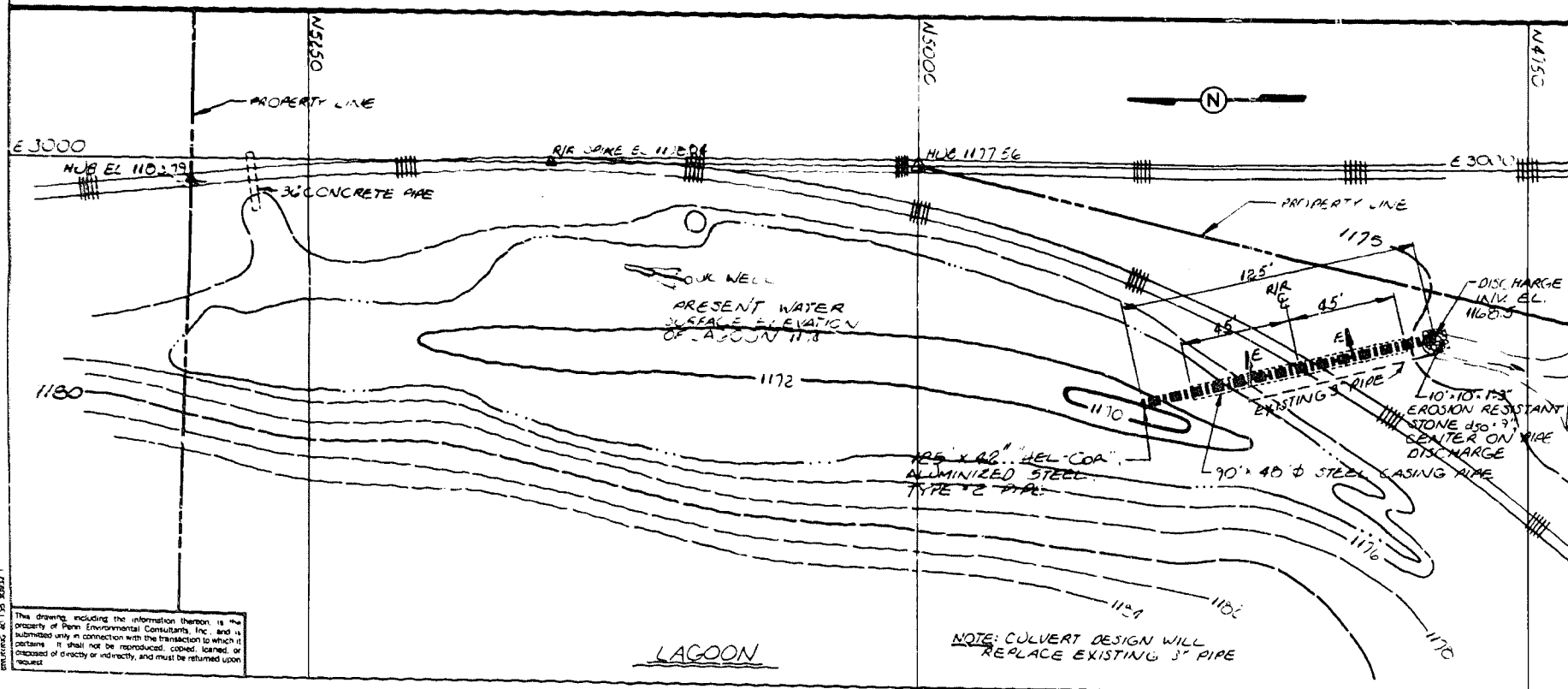
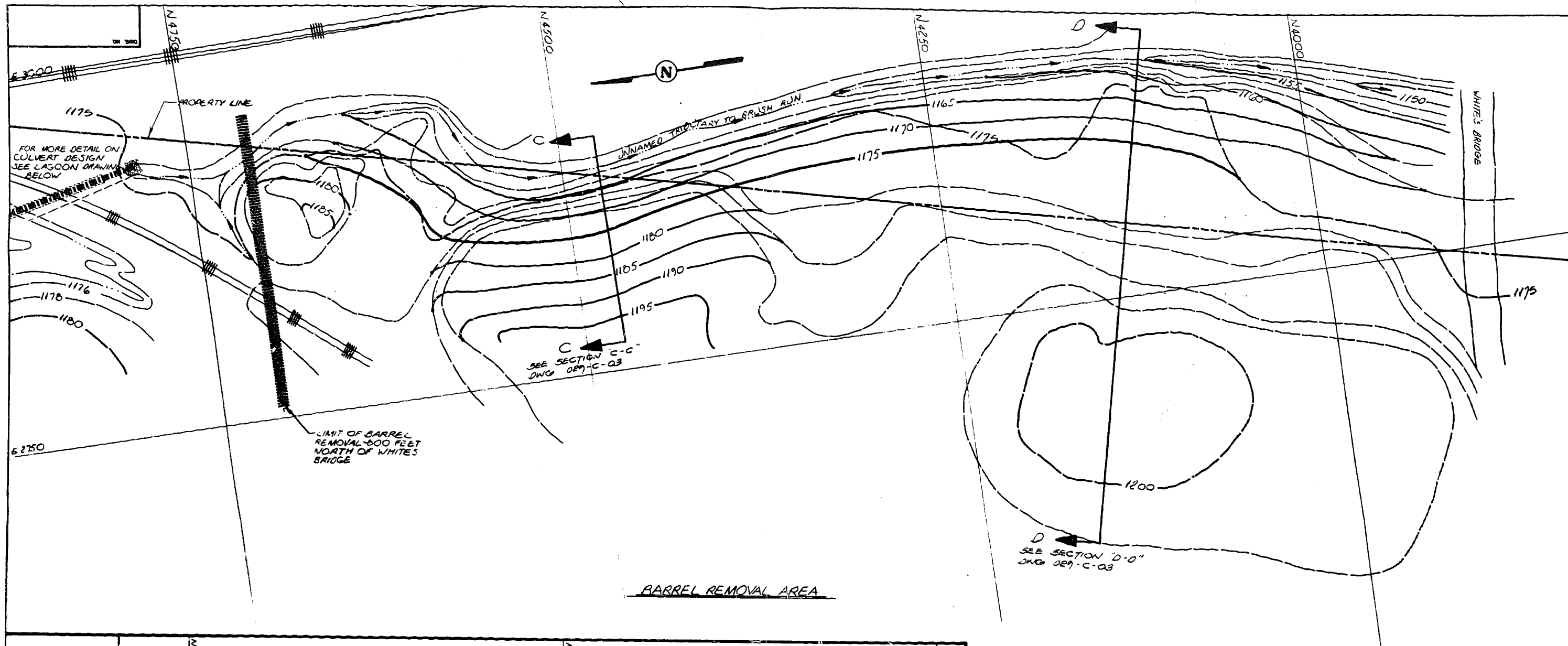
- - TEST PIT & IDENTIFICATION NUMBER
T.P.2
- ▲ - GROUNDWATER MONITORING WELL
702 IDENTIFICATION NUMBER



PROPOSED SITE
RECLAMATION
"79"

REVISIONS					
NO.	DESCRIPTION	DATE	BY	CHKD	APPD
PENN ENVIRONMENTAL CONSULTANTS, INC. ENGINEERS - CONSULTANTS - LABORATORIES 1517 WOODRUFF STREET PITTSBURGH, PA. 15220					
COMBUSTION ENGINEERING, INC. CE CAST PRODUCTS DIVISION CECIL TOWNSHIP, WASHINGTON COUNTY BARREL DISPOSAL FACILITY					
SCALE	1" = 30'	DWG. NO.			
DATE	8-79				
DRAWN	BC	CHKD	BAA	029-C-01	0

The drawing, including the information thereon, is the property of Penn Environmental Consultants, Inc., and is submitted only in connection with the transaction to which it is applied. It shall not be reproduced, copied, loaned, or otherwise disclosed in any manner, and must be returned, with or without notice, to the originator.



EXISTING CONTOUR
FINAL CONTOUR

PROFESSIONAL ENGINEER
E. DENNIS ESCHER
PITTSBURGH, PA.

NO.	DESCRIPTION	DATE	BY	CHKD	APPD

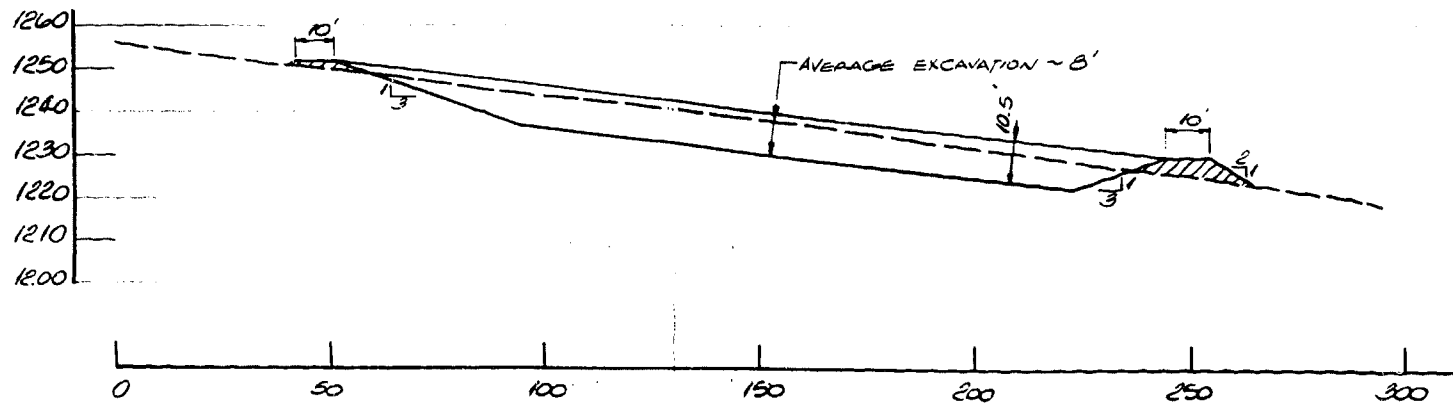
PENN ENVIRONMENTAL CONSULTANTS, INC.
ENGINEERS - CONSULTANTS - LABORATORIES
1517 WOODRUFF STREET PITTSBURGH, PA. 15220

COMBUSTION ENGINEERING, INC.
CE CAST PRODUCTS DIVISION
CECIL TOWNSHIP, WASHINGTON COUNTY
BARREL REMOVAL AREA & LAGOON

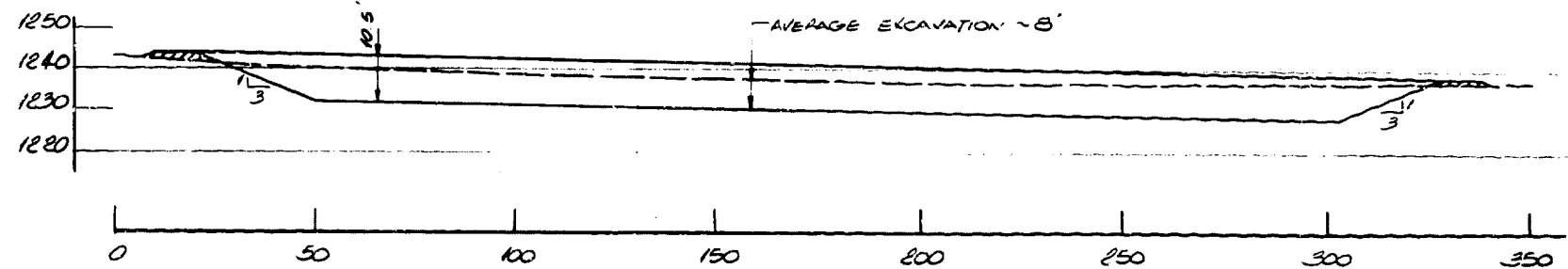
SCALE 1" = 30'
DATE 8-79
DRAWN GCL
CHKD PAA

DWG. NO. 029-C-08
REV. 0

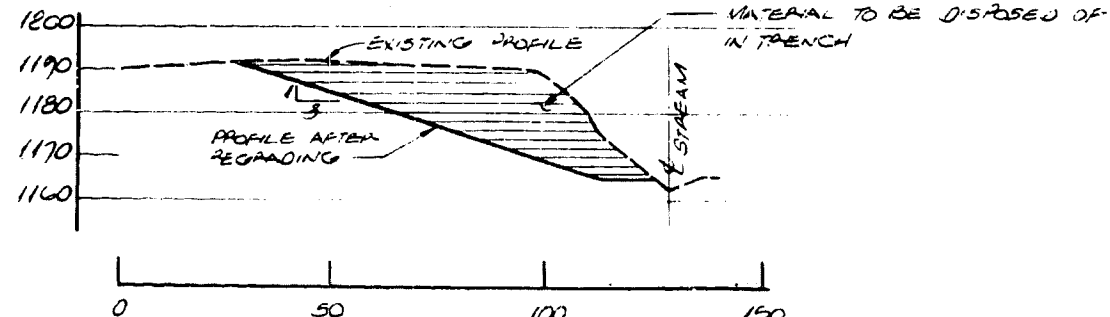
This drawing including the information thereon is the property of Penn Environmental Consultants, Inc. and is submitted only in connection with the transaction to which it pertains. It shall not be reproduced, copied, loaned, or disposed of directly or indirectly, and must be returned upon request.



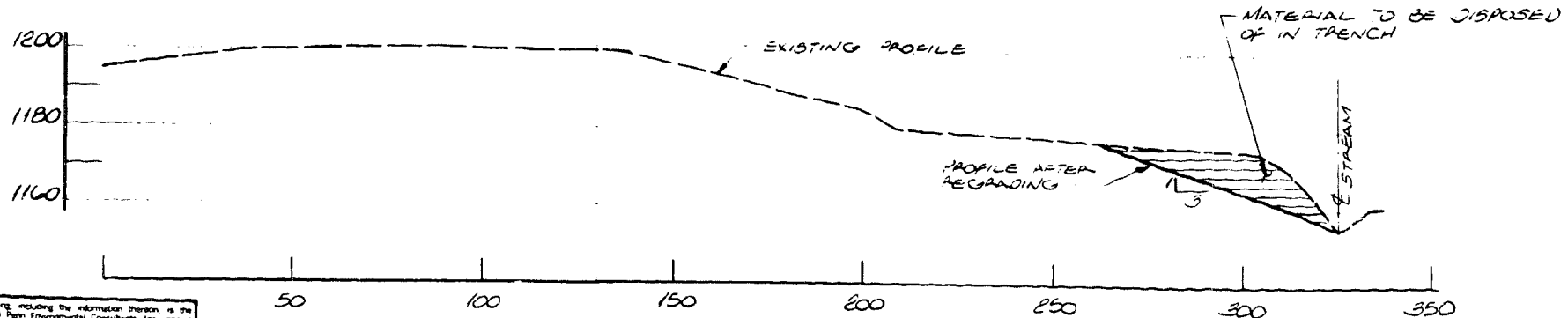
SECTION 'A-A'
SCALE 1" = 80' H/V



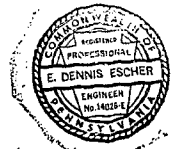
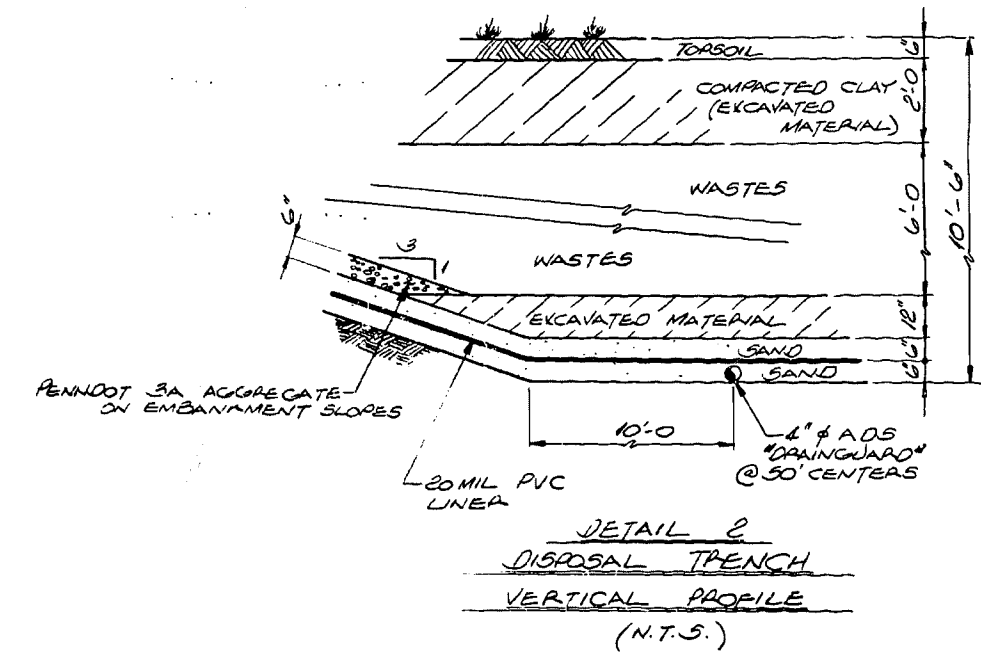
SECTION 'B-B'
SCALE 1" = 80' H/V



SECTION 'C-C'
SCALE 1" = 80' H/V

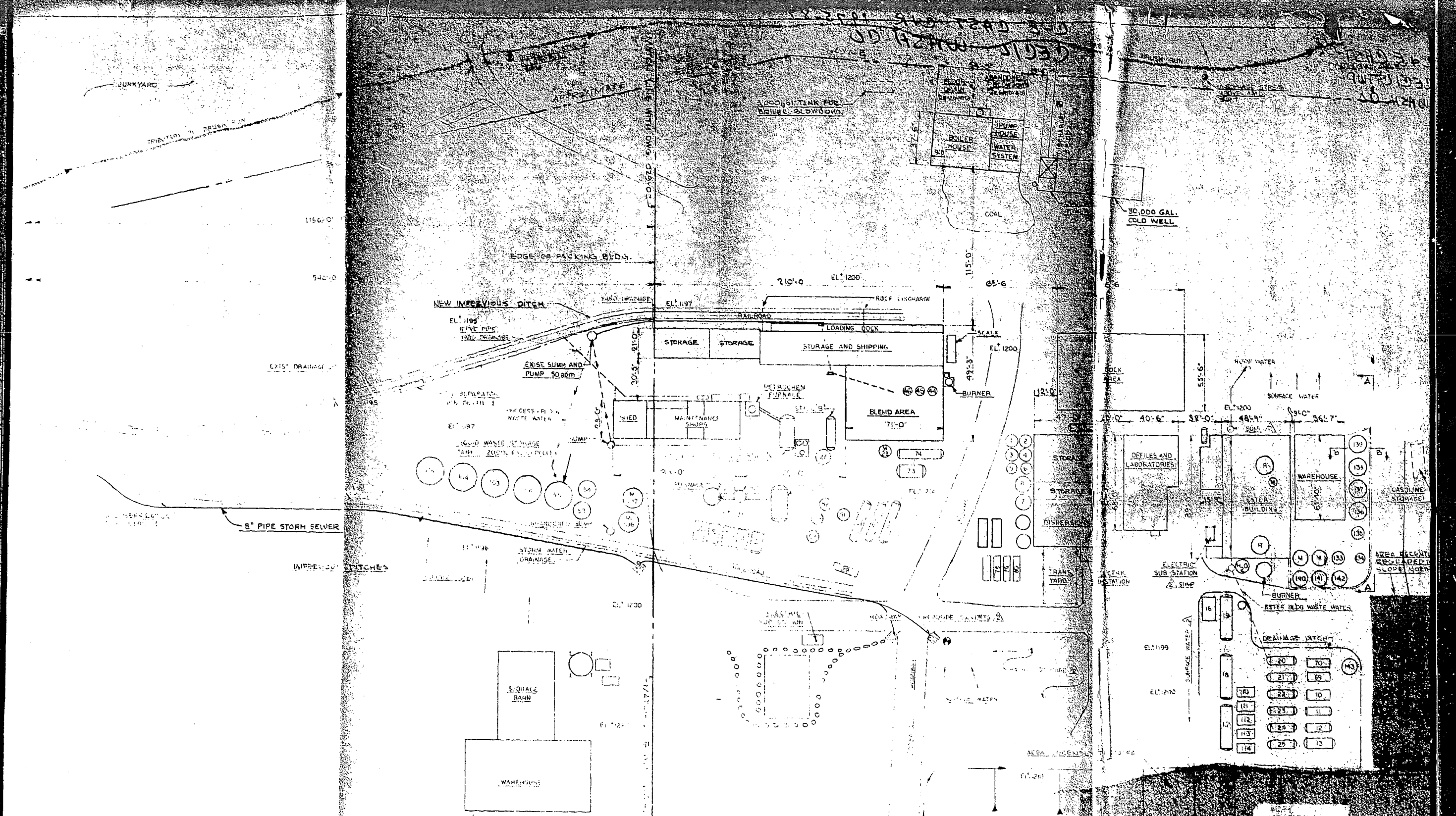


SECTION 'D-D'
SCALE 1" = 80' H/V



NO.	DESCRIPTION	DATE	BY	CHKD	APPD
REVISIONS					
PENN ENVIRONMENTAL CONSULTANTS, INC.					
ENGINEERS - CONSULTANTS - LABORATORIES 1817 WOODRUFF STREET PITTSBURGH, PA. 15220					
COMBUSTION ENGINEERING, INC. CE CAST PRODUCTS DIVISION CECIL TOWNSHIP, WASHINGTON COUNTY CROSS SECTIONS & DETAILS					
SCALE	SHOWN	DIRC. NO.			
DATE	8-79				
DRAWN	PC	CHKD	PA	029-C-03	0

The drawings, including the information thereon, are the property of Penn Environmental Consultants, Inc. and are submitted only in connection with the transaction to which they pertain. It shall not be reproduced, copied, loaned or otherwise used in any way without the written consent of Penn Environmental Consultants, Inc. and must be returned upon request.



○○○○○○ ROCK SURFACE DRAINAGE
 ———— 8" PIPE STORM SEWER

NOTES

ALL DIMEN'S FIELD MEASURED

REV. 3 11-20-78	DWG. UPDATE
REV. 2 01-17-78	ENG.
REV. 1 01-17-78	ENG.
REV. 0 01-17-78	ENG.
SCALE 1/8" = 1'-0"	DWG. NO.
DATE 3/74	
DRAWN BY [unclear]	

PENN ENVIRONMENTAL CONSULTANTS, INC.
 ENGINEERS - CONSULTANTS - LABORATORIES
 1517 WOODRUFF STREET PITTSBURGH, PA. 15220

C.E. EAST PRODUCTS DIVISION
 COMBUSTION ENGINEERING, INC.
 MUSE, PENNSYLVANIA
 PLANT LAYOUT FOR CONTAMINATED
 WATER COLLECTION SYSTEM - SOUTH

SCALE 1/8" = 1'-0"
 DATE 3/74
 DRAWN BY [unclear]

029-01-G1