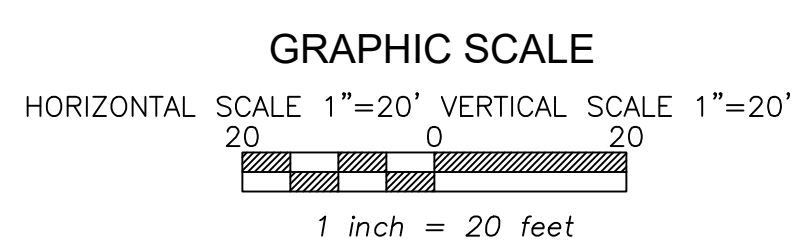


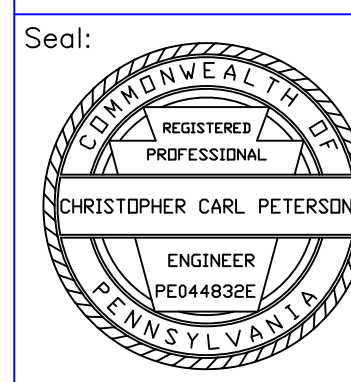
NOTE: FOR STREAM CROSS SECTION LINES SEE EXHIBIT 9

- LEGEND**
- Existing ground
 - Proposed channel
 - Water level 2 yr Event
 - Water level 25 yr Event



Revisions subsequent to February 1, 2019 by: GeoTech Engineering, Inc.
Revisions subsequent to May 11, 2012 by: Hiser Engineering, Inc.
Original mapping by Earthtech, Inc. Uniontown PA office, dated 11/5/2010.

Date:
December, 2021



Neiswonger Construction, Inc.
17592 Route 322, Strattanville, PA 16258
Phone: (814) 764-3455

Maggie Lynn Underground Mine
Permit No.:63192001

Exhibit 14.1.E.2: Streams - Cross-Sections of Relocated/Reconstructed UNT E

Deemston Borough Washington County

Revisions: Prepared By:

GEI
GEOTECH ENGINEERING, INC.
ENGINEERS SURVEYORS GEOLOGISTS

MAIN OFFICE
4631 Airport Coloff
Morrisdale, PA 16858
Phone: (814) 342-7090
Fax: (814) 342-7099

BRANCH OFFICE
80 Beaver Drive, Suite 120-D
Dubois, PA 15801
Phone: (814) 371-4660
Fax: (814) 371-4656