



August 25, 2015

Pennsylvania Game Commission  
Bureau of Wildlife Habitat Management  
Division of Environmental Planning and Habitat Protection  
2001 Elmerton Avenue  
Harrisburg, PA 17110-9797

**Re: Large Project PNDI  
Shell Pipeline Company, LP  
Northeast Pipeline Project  
Greene, Shippingport, Independence, Raccoon, Center, and Potter Townships, Beaver  
County, Chartiers and Mount Pleasant Townships, Washington County, and Robinson,  
North Fayette, and Findlay, Townships, Allegheny County, Pennsylvania**

Dear Madam or Sir:

AECOM is providing environmental services for the Northeast Pipeline (NEP) Project on behalf of Shell Pipeline Company, LP (Shell) and is requesting a Large Project Pennsylvania Natural Diversity Inventory (PNDI) review for rare, candidate, threatened, and endangered species under Pennsylvania Game Commission jurisdiction. Shell is proposing an approximately 95-mile-long natural gas pipeline through Beaver, Washington, and Allegheny counties, Pennsylvania, Hancock County, West Virginia, and Harrison, Carroll, and Jefferson Counties, Ohio (Figure 1–Overview Map). Shell is seeking to build an ethane pipeline linking various supply points in Ohio, West Virginia and Pennsylvania to various delivery points in these same states.

Approximately 42.8 miles of this project is located within Pennsylvania. The Pennsylvania portion is located within the United States Geological Survey (USGS) Beaver, Hookstown, Clinton, and Midway, PA, and East Liverpool, PA and WV, 7.5-minute series topographical quadrangles. The coordinates for the approximate center of the Pennsylvania portion are -80.322609, 40.481865 (Figure 2–Pennsylvania Topographic Map). Additionally, aerial mapping containing National Wetlands Inventory (NWI) mapping and the National Hydrography Dataset (NHD) stream layer is enclosed (Figure 3–Aerial Map).

The project area is primarily composed of mixed deciduous and regenerating forest, agricultural land, and some strip mine and residential development areas. When possible, Shell routed the proposed route along existing right-of-way. Access roads have not been identified at this point, however, when possible, existing roads will be utilized to minimize project impacts.

AECOM  
Foster Plaza 6  
681 Andersen Drive, Suite 400  
Pittsburgh, PA 15220  
Tel: 412.503.4700  
Fax: 412.503.4701



Approximately 7,428 acres of forest are located in Pennsylvania within a 0.25-mile-wide buffer centered on either side of the proposed centerline. Approximately 227 acres of trees in the state will be impacted during construction, leaving 7,201 acres of forest remaining within the 0.25-mile-wide buffer.

AECOM is requesting this review prior to the wetland and watercourse field surveys, which will be conducted Fall 2015 and Spring 2016. AECOM specialists hope to concurrently identify any habitat for species under PGC jurisdiction. The environmental study area will be a 300-foot-wide corridor centered along the alignment. The anticipated disturbance area will be approximately 100-foot-wide. The study area is wider than the disturbance area to allow for minor alignment shifts to avoid any sensitive resources that may be identified during the environmental field investigations.

The following are enclosed to facilitate your review:

- Completed PNDI Large Project Form;
- USGS 7.5 minute quadrangle map with project alignment;
- NWI and NHD mapping; and
- CD containing shapefiles of the alignment.

Shell and AECOM look forward to receiving your response. Please contact Natalie Shearer at 412-503-4595 or natalie.shearer@aecom.com if additional information is desired.

Sincerely,

**AECOM**

Natalie L. Shearer, M.S., QEP  
Natural Resources Lead–Pittsburgh

Brandon M. Walker, PE, CPESC  
Project Manager

Enclosures (5)

- PNDI Large Project Form
- Figure 1–Overview Map
- Figure 2–Pennsylvania Topographic Map
- Figure 3–Aerial Map
- CD containing project shapefiles

cc: Christopher G. Heitman, Shell Chemical Appalachia, LLC  
Kyle L. Webster, Shell Pipeline Company, LP

### How to Use the PNDI Large Project Form

*If your Project is a "Large Project"*— too large/long to search on the online system  
Projects are considered "Large Projects" when the ENTIRE project is:

- Linear/Large Projects that exceed the PNDI online project size limits of 10 miles in length or 5165 acres
- Township-wide, Countywide or Statewide Projects. Examples: Act 537 Sewage Plans, Wind Farms, Roadway Improvements exceeding map limits above.

Due to system limitations and agency requirements, projects should not be submitted piecemeal. The entire project area including roads and infrastructure should be submitted as a single unit.

### What to Send to Jurisdictional Agencies

Send the following information to all of the agencies listed on the Large Project Form.

Check-list of Minimum Materials to be submitted:

\_\_\_ Completed Large Project Form

\_\_\_ Supplemental project narrative with a description of the overall project, the work to be performed, current physical characteristics of the site and acreage to be impacted.

\_\_\_ USGS 7.5-minute Quadrangle with project boundary clearly indicated, and quad name on the map

The inclusion of the following information may expedite the review process.

\_\_\_ GIS shapefiles depicting the project extent

\_\_\_ A basic site plan (particularly showing the relationship of the project to the physical features such as wetlands, streams, ponds, rock outcrops, etc.)

\_\_\_ Color photos keyed to the basic site plan (i.e. showing on the site plan where and in what direction each photo was taken and the date of the photos)

\_\_\_ Information about the presence and location of wetlands in the project area, and how this was determined (e.g., by a qualified wetlands biologist), if wetlands are present in the project area, provide project plans showing the location of all project features, as well as wetlands and streams

### PNDI Large Project Form Definitions

*Applicant:* Person that owns the property or is proposing the project or activity

*Contact Person:* Person to receive response if different than applicant (e.g. Consultant)

*Project Name:* Descriptive title of project (e.g. Twin Pines Subdivision, Miller Bridge Replacement)

*Proposed Activity:* Include ALL earth disturbance activities for project (e.g. for a timber sale—include stream crossings, cutting areas and new roadway accesses). Also include Current Conditions (e.g. housing, farmland, current land cover), and how Construction/Maintenance Activity is to be accomplished

*Total Acres of Property:* Entire site acreage (e.g. timber sale property—including road access (200 acres)

*Acreage to be Impacted:* Disturbance acreage (e.g. timber sale—if the property is 200 acres, but only 100 acres will be disturbed, for example: cutting on 90 acres, a road impacting 10 acres); include all temporary and permanent activities



# Pennsylvania Natural Diversity Inventory

## LARGE PROJECT FORM

This form provides site information necessary to perform an Environmental Review for special concern species and resources listed under the Endangered Species Act of 1973, the Wild Resource Conservation Act, the Pennsylvania Fish and Boat Code or the Pennsylvania Game and Wildlife Code.

### Applicant Information

Name: **Chris Heitmann**

Address: **150 B, N. Dairy Ashford Ste. 356b, Houston, Tx 77090**

Phone Number:

Fax Number:

### Contact Person Information - if different from applicant

Name: **Natalie L. Shearer**

Address:

Phone Number: **412-503-4595**

Fax Number: **412-503-4701**

Email:

### Project Information

Project Name: **Northeast Ethane Pipeline**

Project Reference Point (center point of project): Latitude: **40.481865** Longitude: **-80.322609** Datum: **NAD83**

Municipality: **Multiple, See Letter**

County: **Multiple, See Letter**

Attach a copy of a U.S.G.S. 7 1/2 Minute Quadrangle Map with Project Boundaries clearly marked.

U.S.G.S. Quad Name: **Multiple, See Letter And Figure 2**

Provide GIS shapefiles showing the project boundary (strongly recommended)

### Project Description

Proposed Project Activity (including ALL earth disturbance areas and current conditions)

See request letter

Total Acres of Property: **~1,600**

Acreage to be Impacted: **~519**

1. Will the entire project occur in or on an existing building, parking lot, driveway, road, maintained road shoulder, street, runway, paved area, railroad bed, or maintained lawn? Yes  No
2. Are there any waterways or waterbodies (intermittent or perennial rivers, streams, creeks, tributaries, lakes or ponds) in or near the project area, or on the land parcel? If so, how many feet away is the project? Yes  0 Feet No
3. Are wetlands located in or within 300 feet of the project area? Yes  No  If No, is this the result of a wetland delineation?
4. How many acres of tree removal, tree cutting or forest clearing will be necessary to implement all aspects of this project? **~227**

#### Dept. of Conservation and Natural Resources

Bureau of Forestry, Ecological Services Section

400 Market St., PO Box 8552

Harrisburg, PA 17105

fax: 717-772-0271

#### PA Game Commission

Bureau of Wildlife Habitat Management

Division of Environmental Planning & Habitat Protection

2001 Elmerton Avenue

Harrisburg, PA 17110-9797

#### PA Fish and Boat Commission

Natural Diversity Section

450 Robinson Lane

Bellefonte, PA 16823

#### US Fish and Wildlife Service

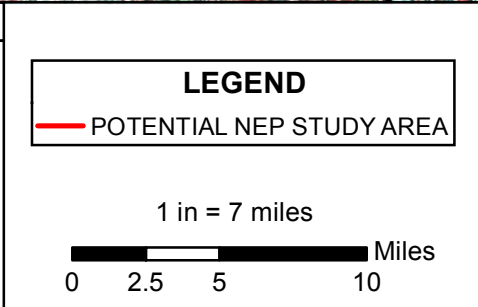
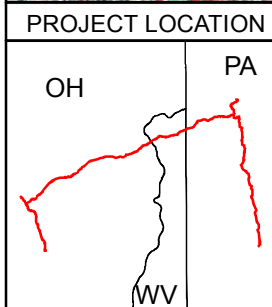
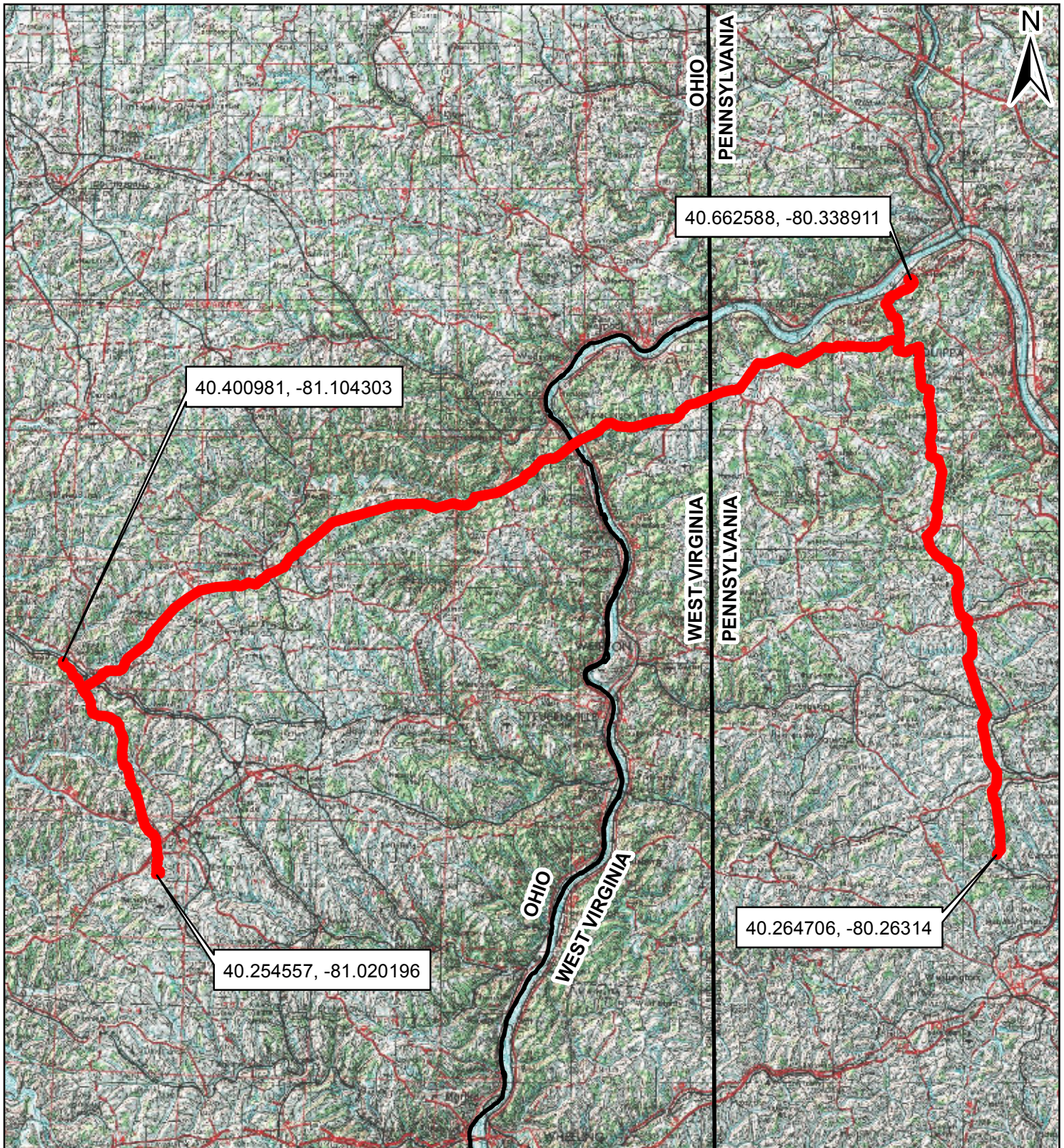
Pennsylvania Field Office

110 Radnor Rd; Suite 101

State College, PA 16801

no faxes please





**AECOM**

FOSTER PLAZA 6  
681 ANDERSEN DRIVE  
4TH FLOOR  
PITTSBURGH, PA 15220  
412-503-4700

**FIGURE 1**

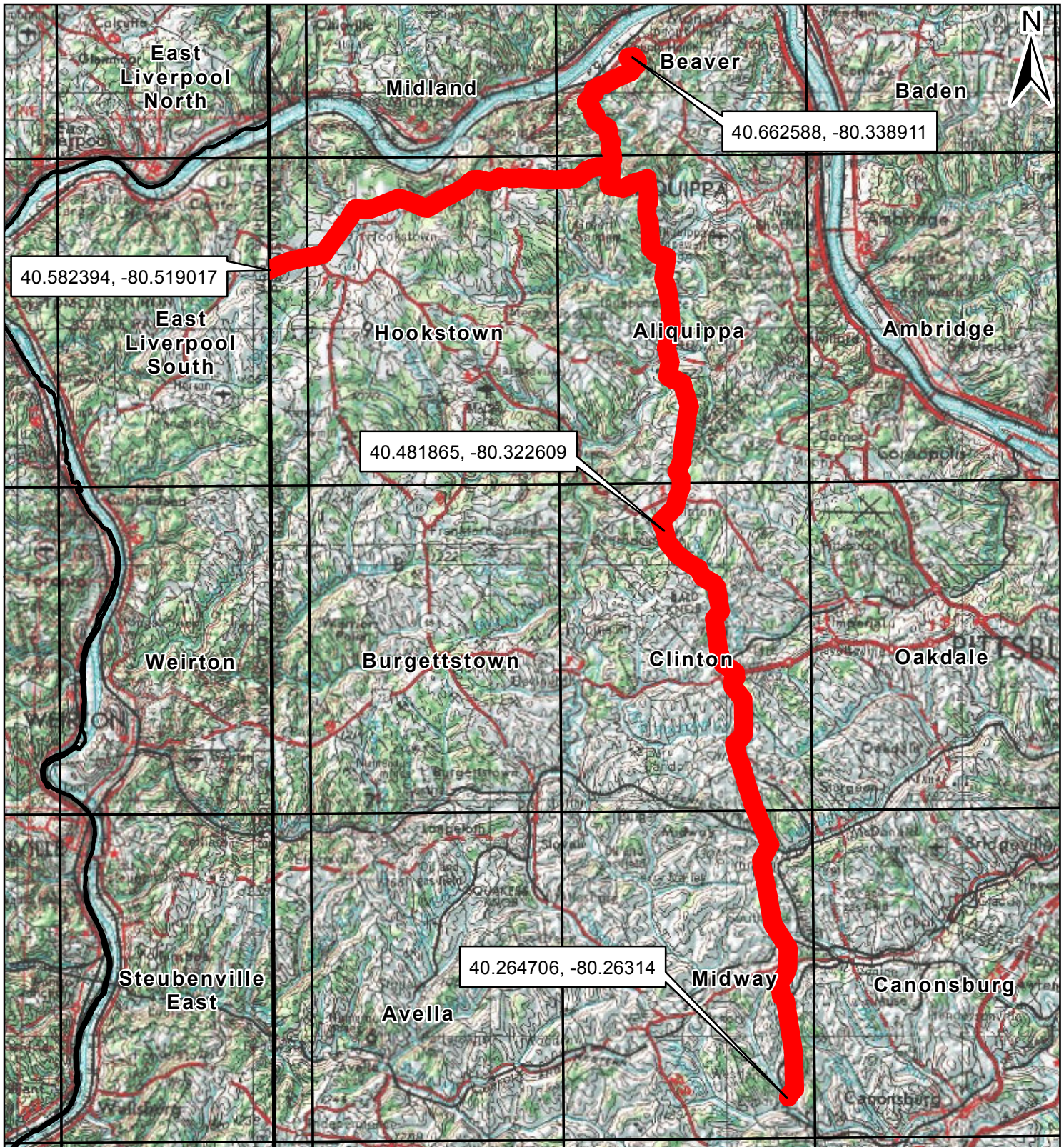
**OVERVIEW MAP**

**SHELL PIPELINE COMPANY, LP  
NORTHEAST PIPELINE PROJECT**

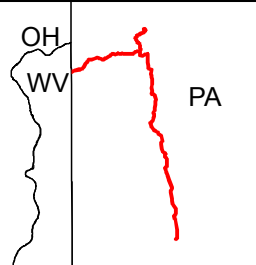
REFERENCE: TOPOGRAPHIC LAYER - COPYRIGHT:© 2013 NATIONAL GEOGRAPHIC SOCIETY, I-CUBED  
COORDINATE SYSTEM: NAD 1983 UTM ZONE 17N  
PROJECTION: TRANSVERSE MERCATOR

DRAWN BY: EES    DATE: 8/25/2015  
APPROVED: BMW    PROJECT #: 60431827



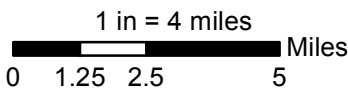


**PROJECT LOCATION**



**LEGEND**

- POTENTIAL PA STUDY AREA
- USGS 24K TOPO MAP BOUNDARY
- STATE BOUNDARY



FOSTER PLAZA 6  
681 ANDERSEN DRIVE  
4TH FLOOR  
PITTSBURGH, PA 15220  
412-503-4700

**FIGURE 2**

**PENNSYLVANIA TOPOGRAPHIC MAP**

**SHELL PIPELINE COMPANY, LP  
NORTHEAST PIPELINE PROJECT**

REFERENCE: TOPOGRAPHIC LAYER - COPYRIGHT:© 2013 NATIONAL GEOGRAPHIC SOCIETY, I-CUBED

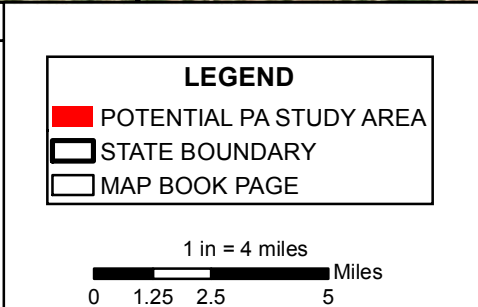
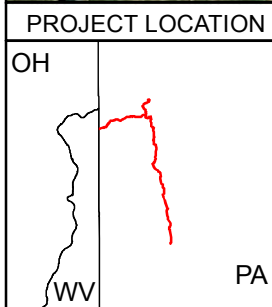
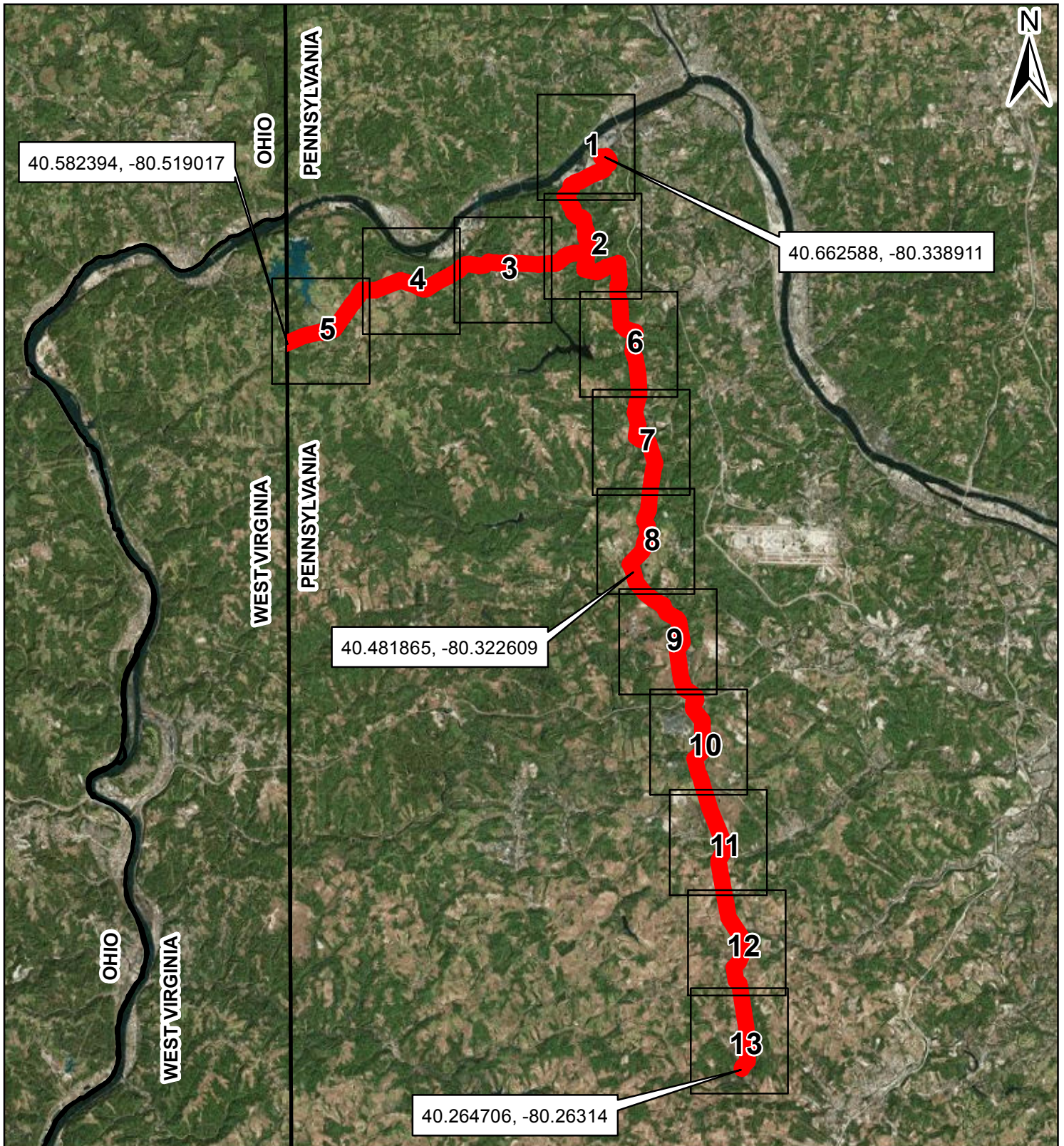
COORDINATE SYSTEM: NAD 1983 UTM ZONE 17N

PROJECTION: TRANSVERSE MERCATOR

DRAWN BY: EES DATE: 8/25/2015

APPROVED: BMW PROJECT #: 60431827





**AECOM**

FOSTER PLAZA 6  
681 ANDERSEN DRIVE  
4TH FLOOR  
PITTSBURGH, PA 15220  
412-503-4700

**FIGURE 3**

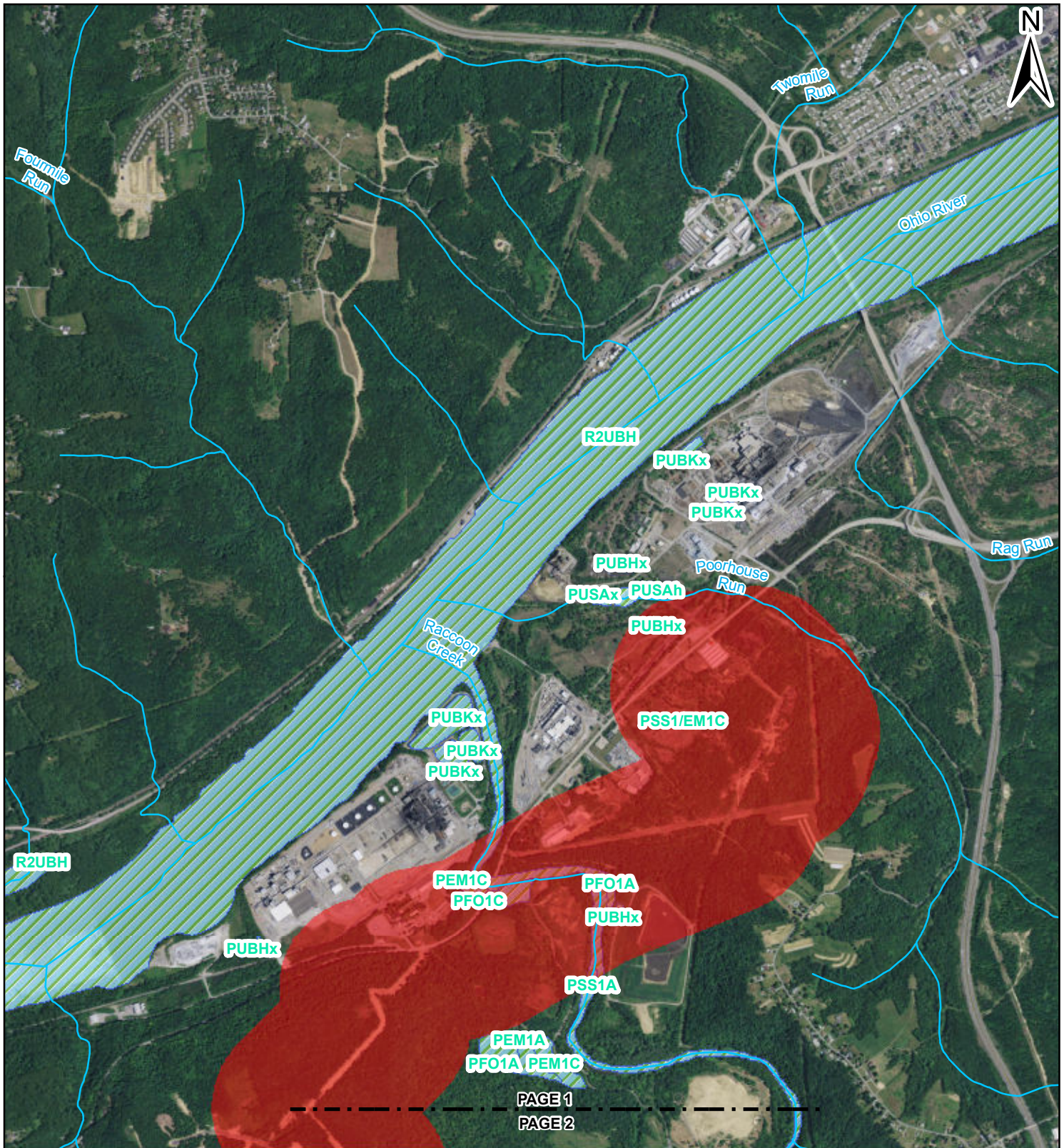
**PENNSYLVANIA  
AERIAL MAP  
INDEX PAGE**

**SHELL PIPELINE COMPANY, LP  
NORTHEAST PIPELINE PROJECT**

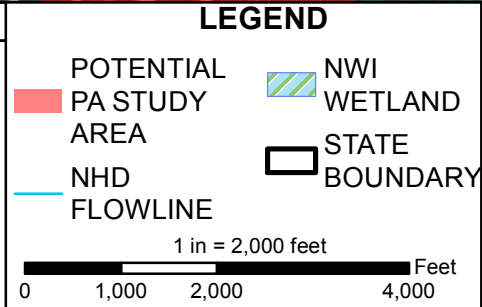
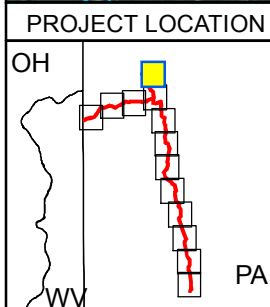
REFERENCE: AERIAL LAYER - SOURCE: ESRI, DIGITALGLOBE, GEOEYE, I-CUBED, EARTHSTAR      COORDINATE SYSTEM: NAD 1983 UTM ZONE 17N  
PROJECTION: TRANSVERSE MERCATOR

DRAWN BY: EES      DATE: 8/25/2015  
APPROVED: BMW      PROJECT #: 60431827





PAGE 1  
PAGE 2



**AECOM**

FOSTER PLAZA 6  
681 ANDERSEN DRIVE  
4TH FLOOR  
PITTSBURGH, PA 15220  
412-503-4700

**FIGURE 3**

**PENNSYLVANIA  
AERIAL MAP**

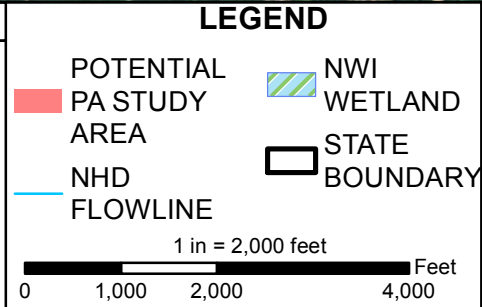
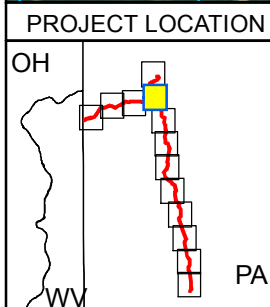
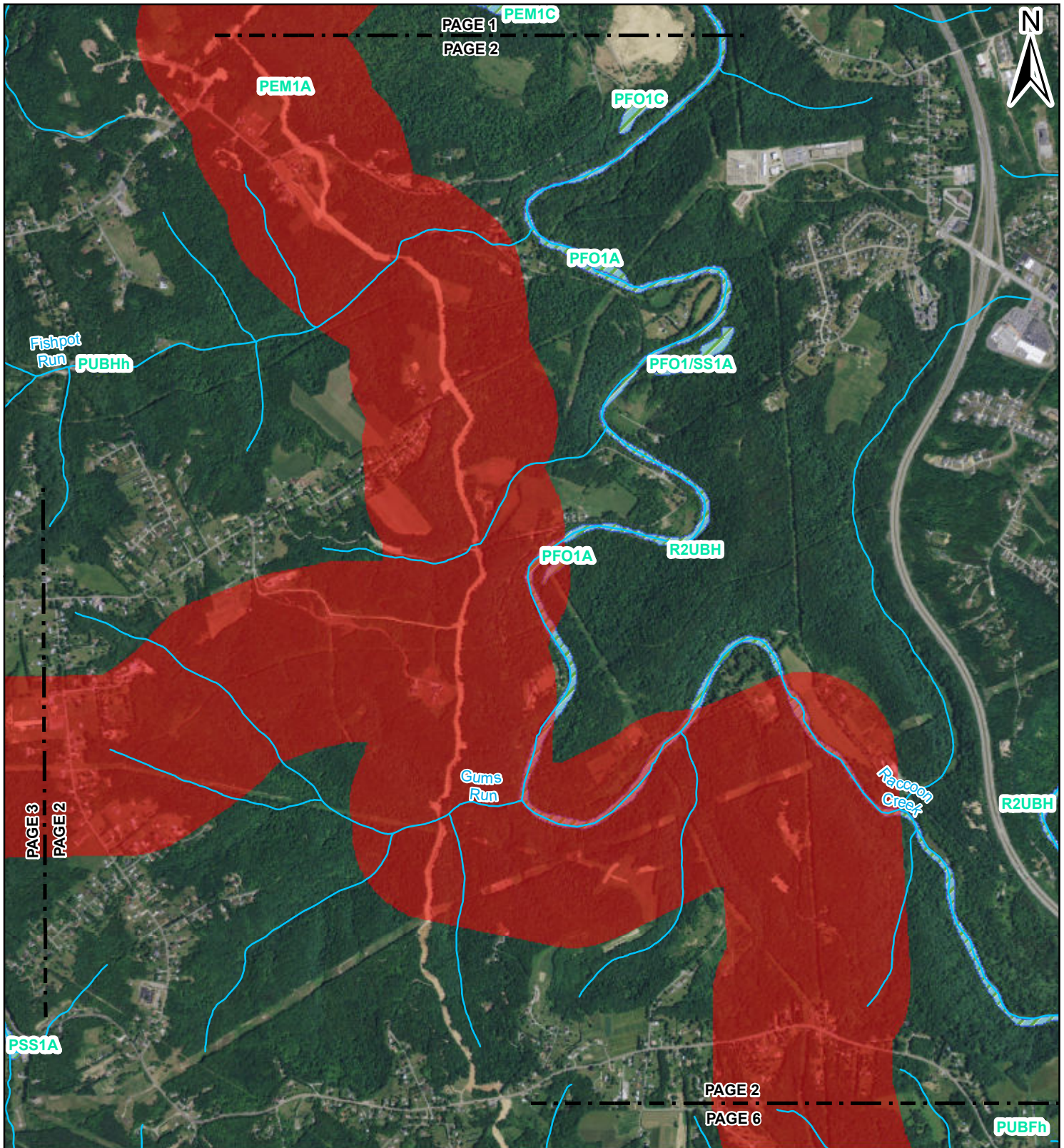
Page 1 of 13

**SHELL PIPELINE COMPANY, LP  
NORTHEAST PIPELINE PROJECT**

REFERENCE: AERIAL LAYER - SOURCE: ESRI, DIGITALGLOBE, GEOEYE, I-CUBED, EARTHSTAR GEOGRAPHICS, CNES/AIRBUS DS, USDA, USGS, AEX, GETMAPPING, AEROGIRD, IGN, IGP, SWISSTOPO, AND THE GIS USER COMMUNITY. NWI WETLAND LAYER - U.S. FISH AND WILDLIFE, NATIONAL WETLANDS INVENTORY FOR PA-POLYGON, 10/01/2013. NHD FLOWLINE LAYER - UNITED STATES GEOLOGICAL SURVEY, NATIONAL HYDROGRAPHY DATASET, 07/14/2015. COORDINATE SYSTEM: NAD 1983 UTM ZONE 17N TRANSVERSE MERCATOR

DRAWN BY: EES    DATE: 8/25/2015  
APPROVED: BMW    PROJECT #: 60431827





**AECOM**

FOSTER PLAZA 6  
681 ANDERSEN DRIVE  
4TH FLOOR  
PITTSBURGH, PA 15220  
412-503-4700

**FIGURE 3**

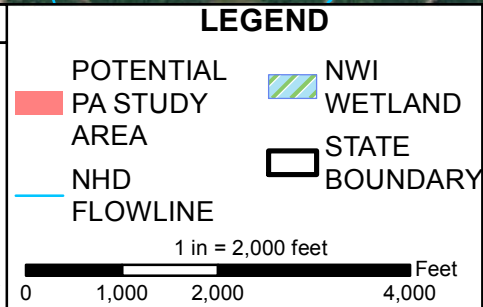
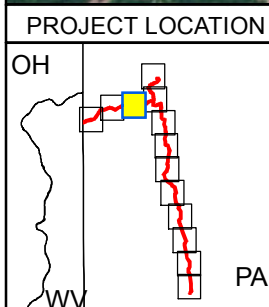
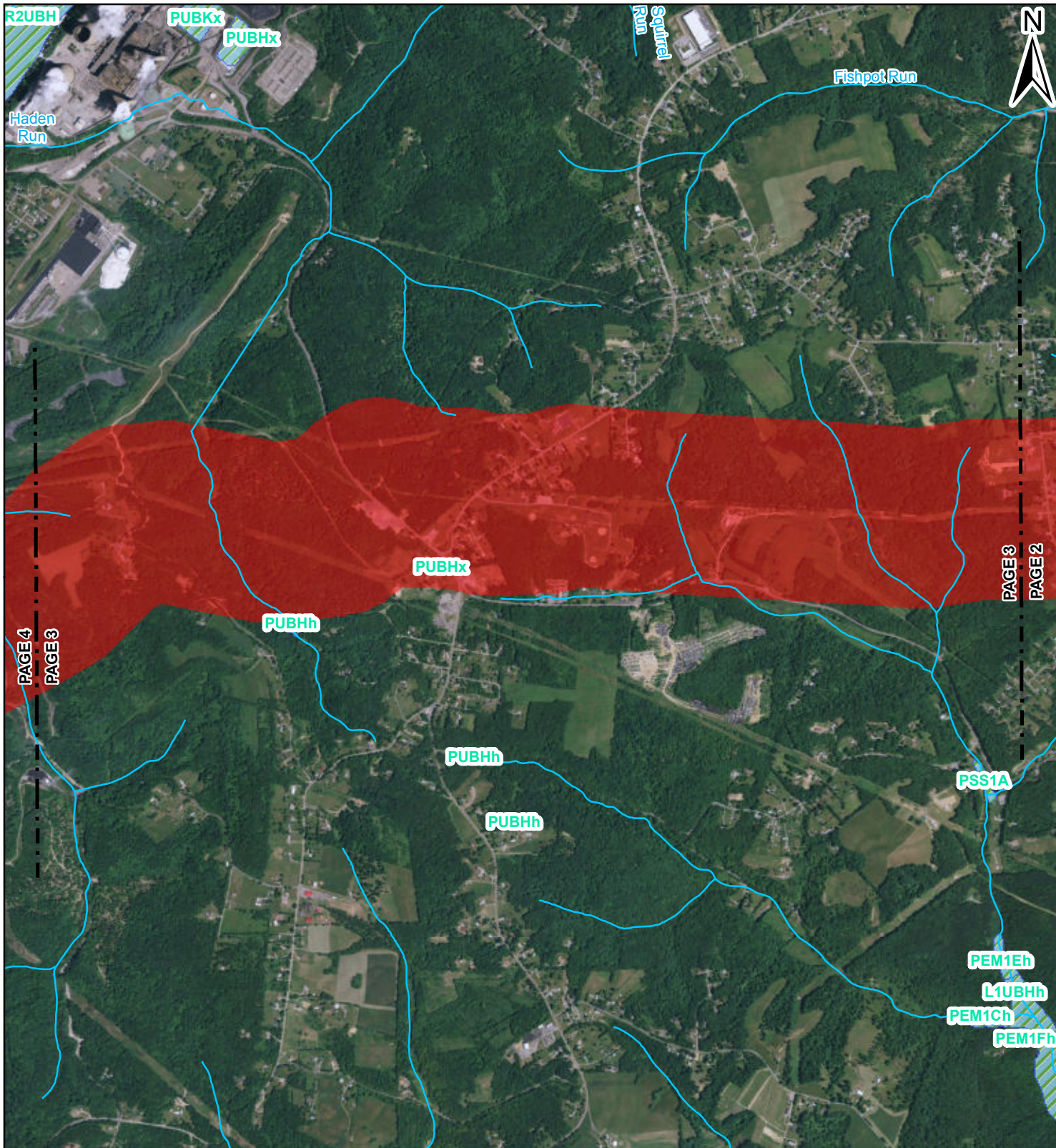
**PENNSYLVANIA  
AERIAL MAP**  
Page 2 of 13

**SHELL PIPELINE COMPANY, LP  
NORTHEAST PIPELINE PROJECT**

REFERENCE: AERIAL LAYER - SOURCE: ESRI, DIGITALGLOBE, GEOEYE, I-CUBED, EARTHSTAR GEOGRAPHICS, CNES/AIRBUS DS, USDA, USGS, AEX, GETMAPPING, AERGRID, IGN, IGP, SWISS TOPO, AND THE GIS USER COMMUNITY. NWI WETLAND LAYER - U.S. FISH AND WILDLIFE, NATIONAL WETLANDS INVENTORY FOR PA-POLYGON, 10/01/2013. NHD FLOWLINE LAYER - UNITED STATES GEOLOGICAL SURVEY, NATIONAL HYDROGRAPHY DATASET, 07/14/2015. COORDINATE SYSTEM: NAD 1983 UTM ZONE 17N TRANSVERSE MERCATOR

DRAWN BY: EES      DATE: 8/25/2015  
APPROVED: BMW      PROJECT #: 60431827





**AECOM**

FOSTER PLAZA 6  
681 ANDERSEN DRIVE  
4TH FLOOR  
PITTSBURGH, PA 15220  
412-503-4700

**FIGURE 3**

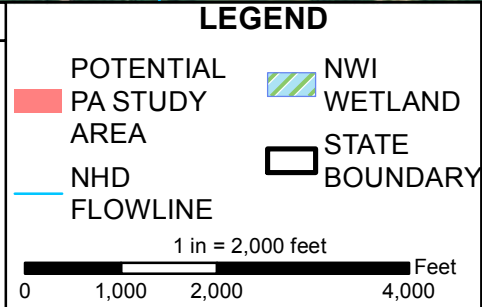
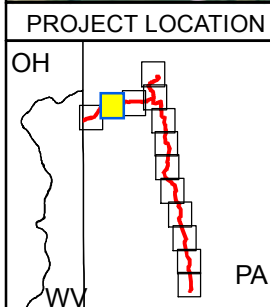
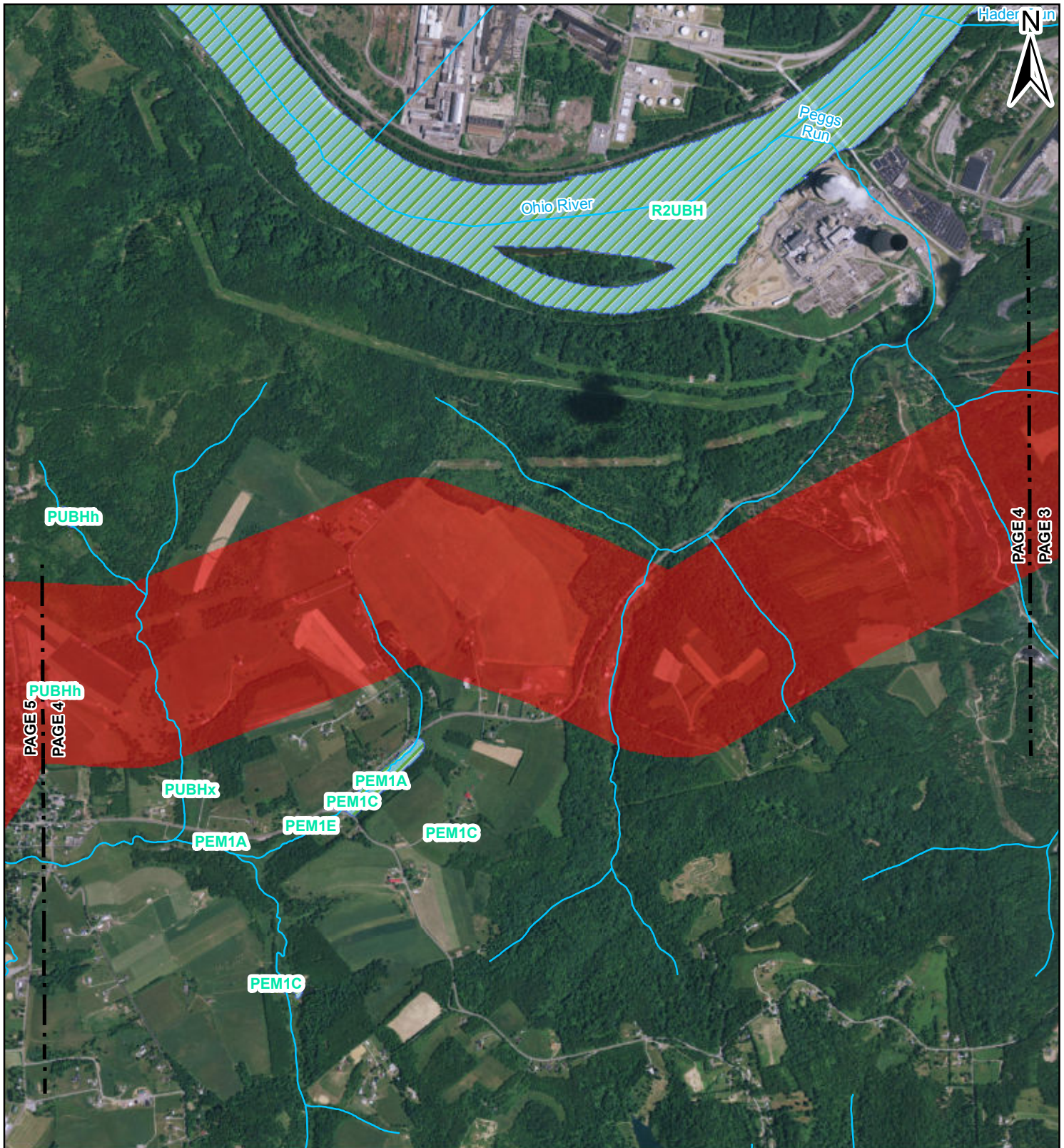
**PENNSYLVANIA  
AERIAL MAP**  
Page 3 of 13

**SHELL PIPELINE COMPANY, LP  
NORTHEAST PIPELINE PROJECT**

REFERENCE: AERIAL LAYER - SOURCE: ESRI, DIGITALGLOBE, GEOEYE, I-CUBED, EARTHSTAR GEOGRAPHICS, CNES/AIRBUS DS, USDA, USGS, AEX, GETMAPPING, AERGRID, IGN, IGP, SWISS TOPO, AND THE GIS USER COMMUNITY. NWI WETLAND LAYER - U.S. FISH AND WILDLIFE, NATIONAL WETLANDS INVENTORY FOR PA-POLYGON, 10/01/2013. NHD FLOWLINE LAYER - UNITED STATES GEOLOGICAL SURVEY, NATIONAL HYDROGRAPHY DATASET, 07/14/2015. COORDINATE SYSTEM: NAD 1983 UTM ZONE 17N TRANSVERSE MERCATOR

DRAWN BY: EES    DATE: 8/25/2015  
APPROVED: BMW    PROJECT #: 60431827





**AECOM**

FOSTER PLAZA 6  
681 ANDERSEN DRIVE  
4TH FLOOR  
PITTSBURGH, PA 15220  
412-503-4700

**FIGURE 3**

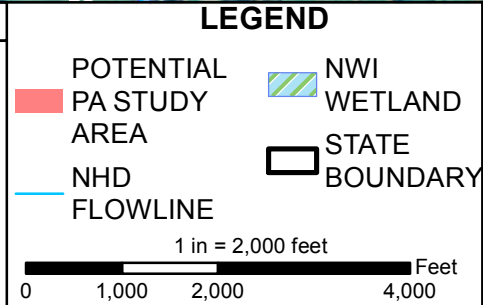
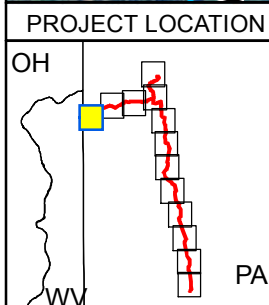
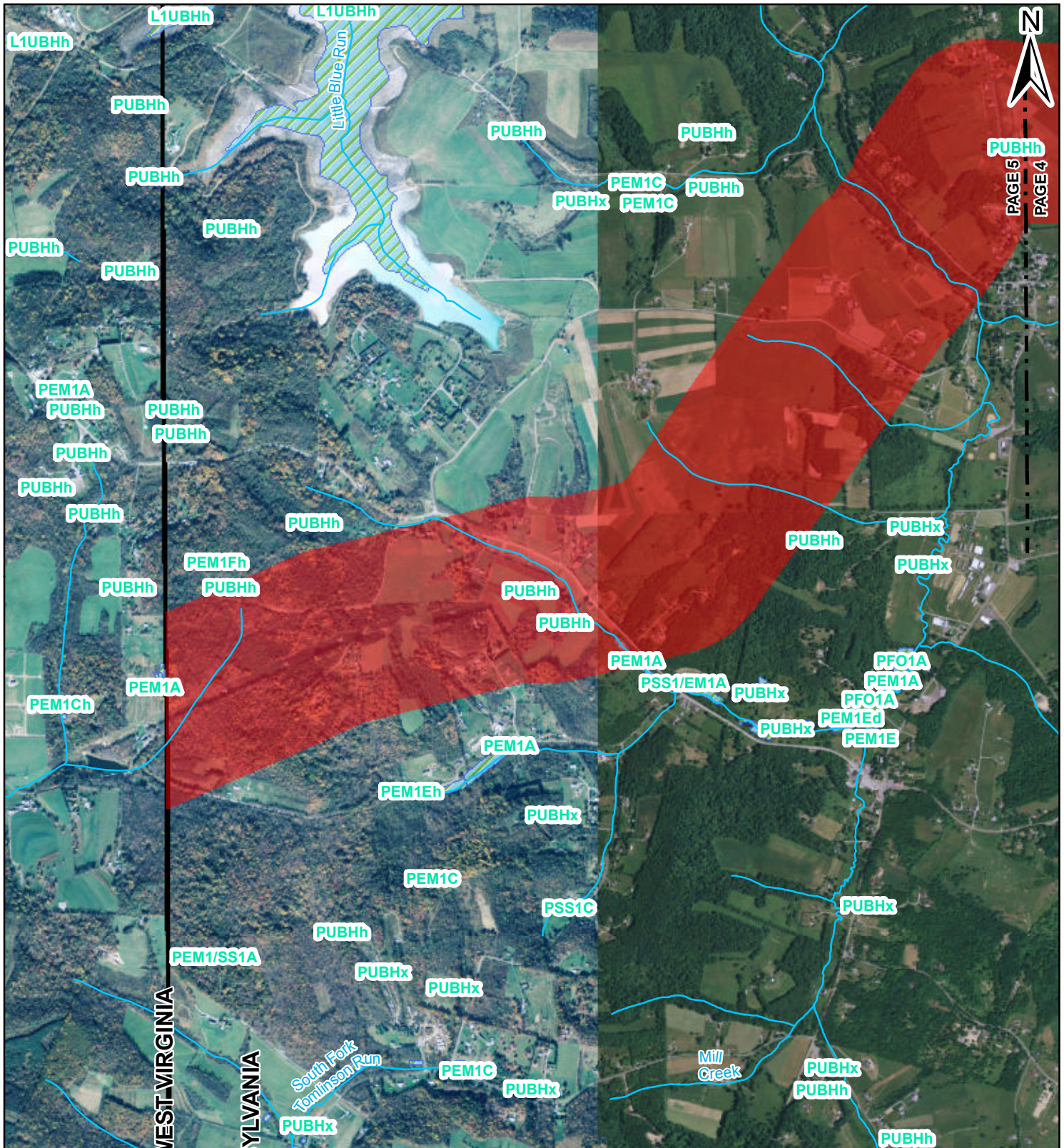
**PENNSYLVANIA AERIAL MAP**  
Page 4 of 13

**SHELL PIPELINE COMPANY, LP  
NORTHEAST PIPELINE PROJECT**

REFERENCE: AERIAL LAYER - SOURCE: ESRI, DIGITALGLOBE, GEOEYE, I-CUBED, EARTHSTAR GEOGRAPHICS, CNES/AIRBUS DS, USDA, USGS, AEX, GETMAPPING, AERGRID, IGN, IGP, SWISS TOPO, AND THE GIS USER COMMUNITY. NWI WETLAND LAYER - U.S. FISH AND WILDLIFE, NATIONAL WETLANDS INVENTORY FOR PA-POLYGON, 10/01/2013. NHD FLOWLINE LAYER - UNITED STATES GEOLOGICAL SURVEY, NATIONAL HYDROGRAPHY DATASET, 07/14/2015. COORDINATE SYSTEM: NAD 1983 UTM ZONE 17N TRANSVERSE MERCATOR

DRAWN BY: EES DATE: 8/25/2015  
APPROVED: BMW PROJECT #: 60431827





**AECOM**

FOSTER PLAZA 6  
681 ANDERSEN DRIVE  
4TH FLOOR  
PITTSBURGH, PA 15220  
412-503-4700

**FIGURE 3**

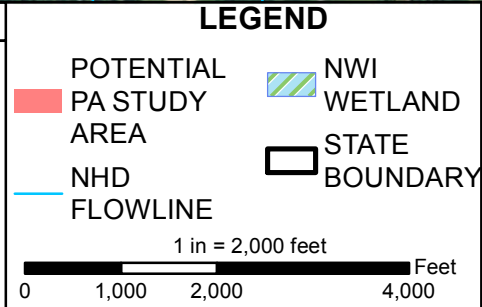
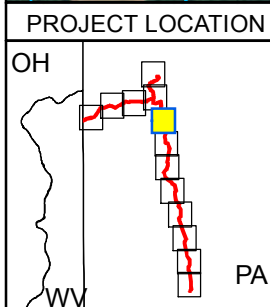
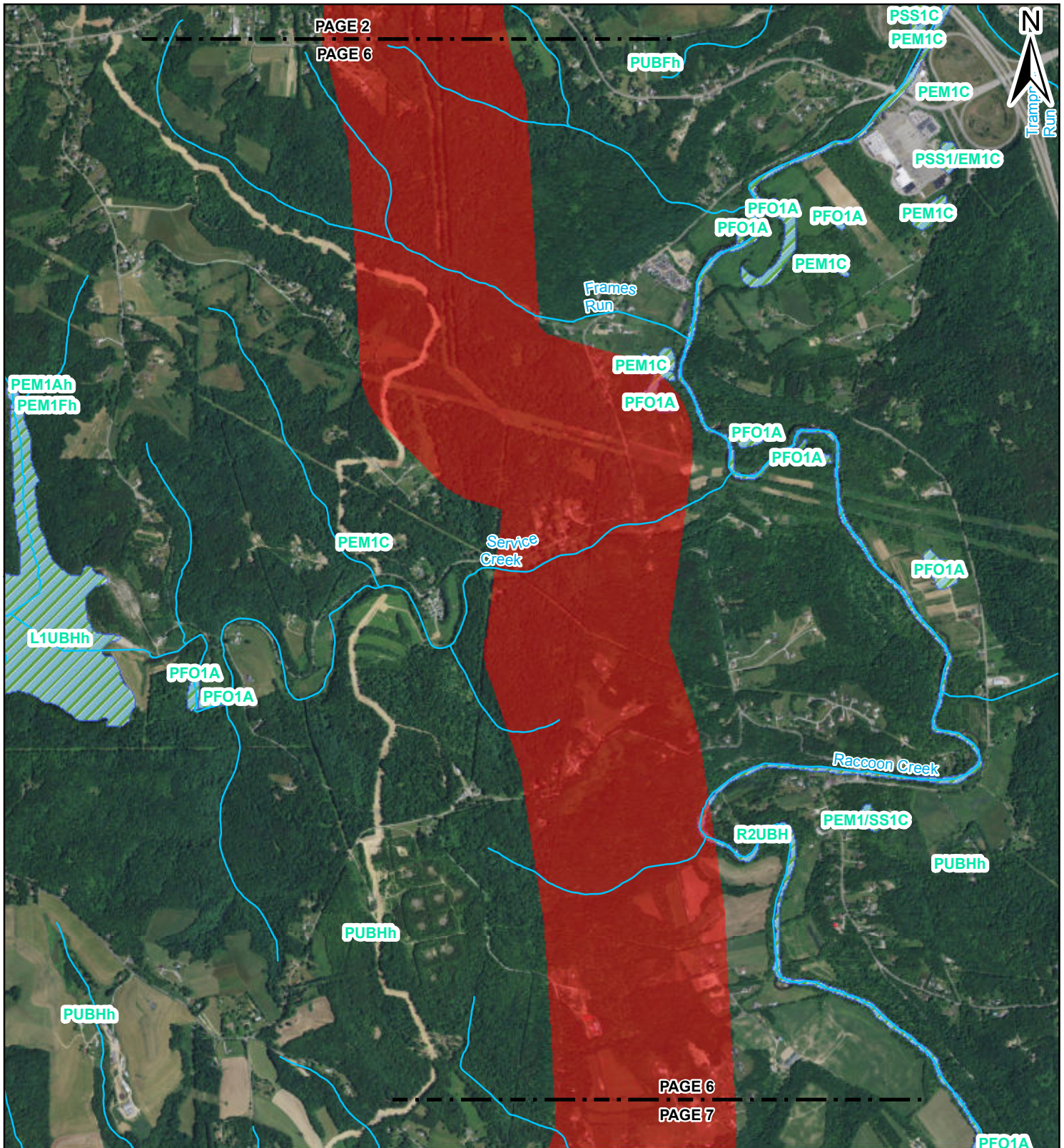
**PENNSYLVANIA AERIAL MAP**  
Page 5 of 13

**SHELL PIPELINE COMPANY, LP  
NORTHEAST PIPELINE PROJECT**

REFERENCE: AERIAL LAYER - SOURCE: ESRI, DIGITALGLOBE, GEOEYE, I-CUBED, EARTHSTAR GEOGRAPHICS, CNES/AIRBUS DS, USDA, USGS, AEX, GETMAPPING, AERGRID, IGN, IGP, SWISS TOPO, AND THE GIS USER COMMUNITY. NWI WETLAND LAYER - U.S. FISH AND WILDLIFE, NATIONAL WETLANDS INVENTORY FOR PA-POLYGON, 10/01/2013. NHD FLOWLINE LAYER - UNITED STATES GEOLOGICAL SURVEY, NATIONAL HYDROGRAPHY DATASET, 07/14/2015. COORDINATE SYSTEM: NAD 1983 UTM ZONE 17N TRANSVERSE MERCATOR

DRAWN BY: EES      DATE: 8/25/2015  
APPROVED: BMW      PROJECT #: 60431827





**AECOM**

FOSTER PLAZA 6  
681 ANDERSEN DRIVE  
4TH FLOOR  
PITTSBURGH, PA 15220  
412-503-4700

**FIGURE 3**

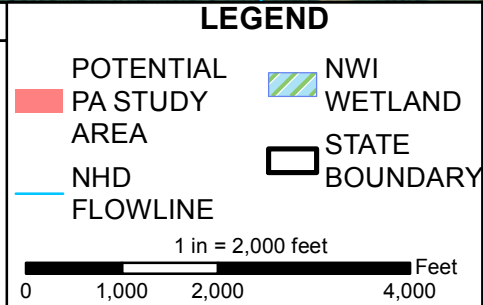
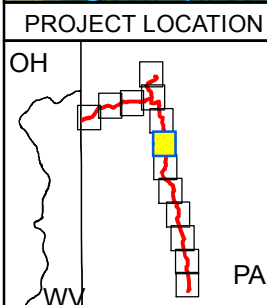
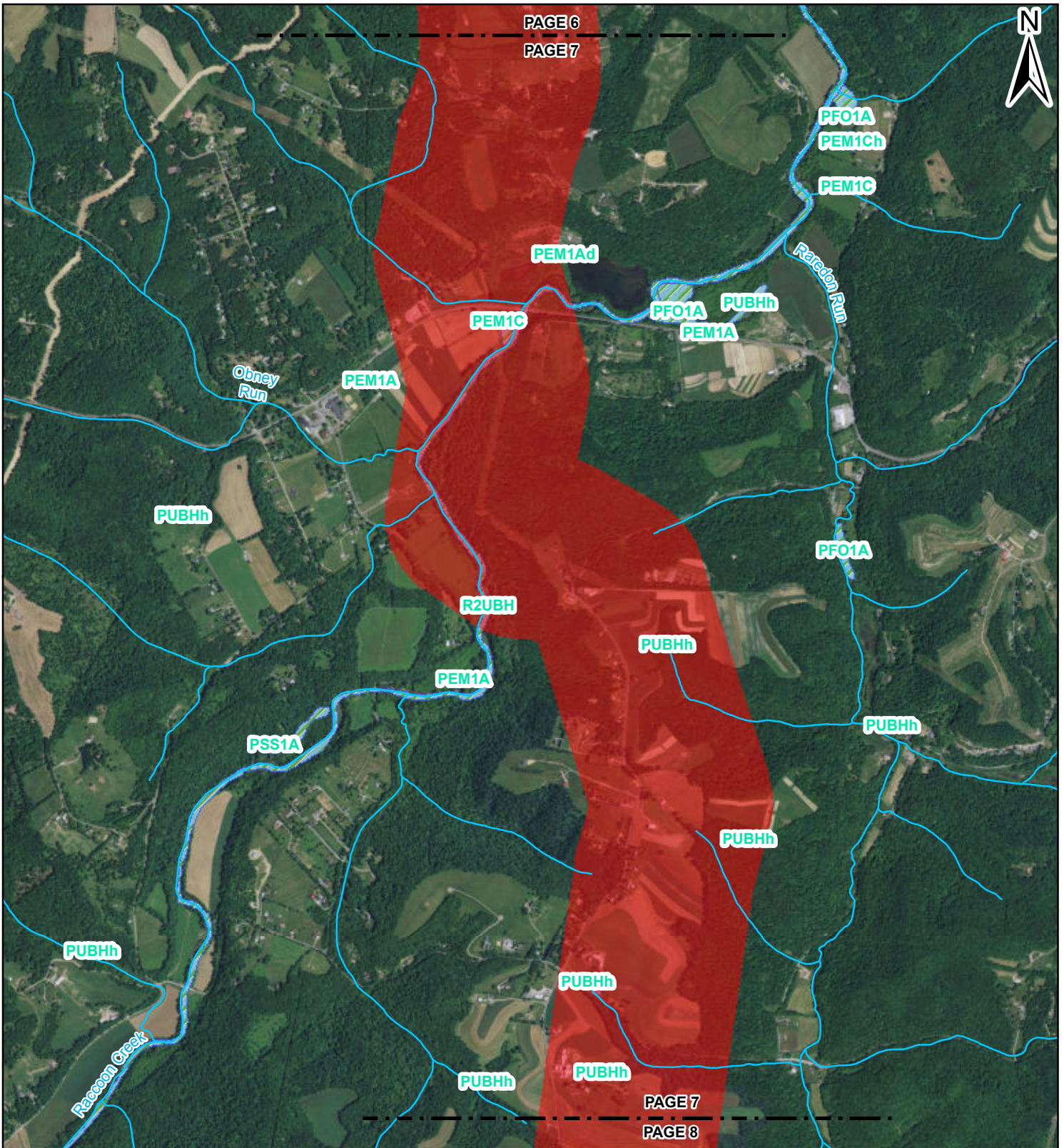
**PENNSYLVANIA AERIAL MAP**  
Page 6 of 13

**SHELL PIPELINE COMPANY, LP**  
**NORTHEAST PIPELINE PROJECT**

REFERENCE: AERIAL LAYER - SOURCE: ESRI, DIGITALGLOBE, GEOEYE, I-CUBED, EARTHSTAR GEOGRAPHICS, CNES/AIRBUS DS, USDA, USGS, AEX, GETMAPPING, AERGRID, IGN, IGP, SWISS TOPO, AND THE GIS USER COMMUNITY. NWI WETLAND LAYER - U.S. FISH AND WILDLIFE, NATIONAL WETLANDS INVENTORY FOR PA-POLYGON, 10/01/2013. NHD FLOWLINE LAYER - UNITED STATES GEOLOGICAL SURVEY, NATIONAL HYDROGRAPHY DATASET, 07/14/2015. COORDINATE SYSTEM: NAD 1983 UTM ZONE 17N TRANSVERSE MERCATOR

DRAWN BY: EES      DATE: 8/25/2015  
APPROVED: BMW      PROJECT #: 60431827





**AECOM**

FOSTER PLAZA 6  
681 ANDERSEN DRIVE  
4TH FLOOR  
PITTSBURGH, PA 15220  
412-503-4700

**FIGURE 3**

**PENNSYLVANIA  
AERIAL MAP**  
Page 7 of 13

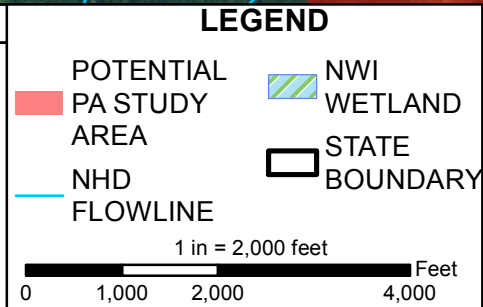
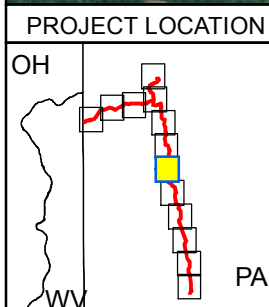
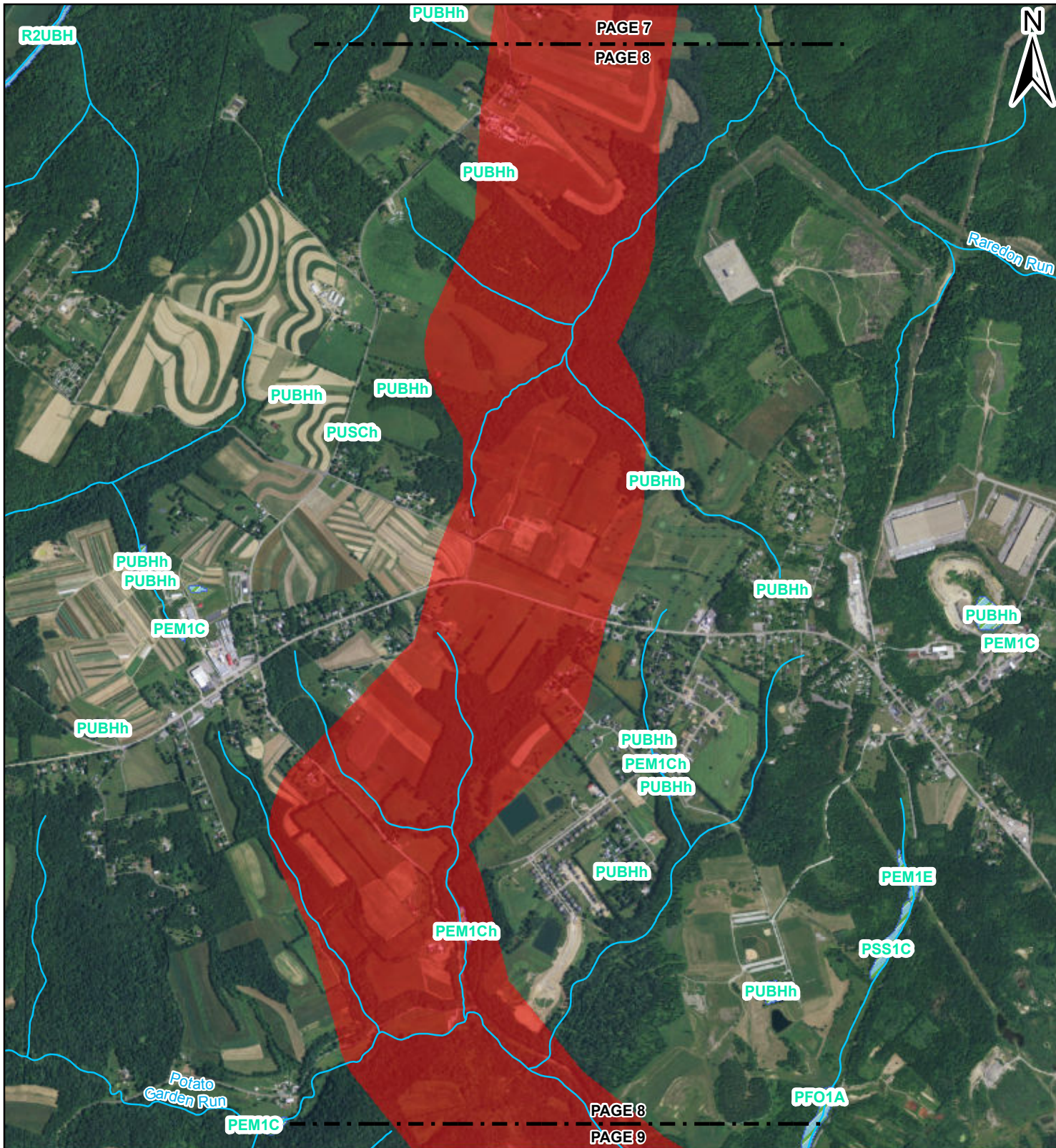
---

**SHELL PIPELINE COMPANY, LP  
NORTHEAST PIPELINE PROJECT**

REFERENCE: AERIAL LAYER - SOURCE: ESRI, DIGITALGLOBE, GEOEYE, ICUBED, EARTHSTAR GEOGRAPHICS, CNES/AIRBUS DS, USDA, USGS, AEX, GETMAPPING, AEROGRIID, IGN, IGP, SWISS TOPO, AND THE GIS USER COMMUNITY. NWI WETLAND LAYER - U.S. FISH AND WILDLIFE, NATIONAL WETLANDS INVENTORY FOR PA-POLYGON, 10/01/2013. NHD FLOWLINE LAYER - UNITED STATES GEOLOGICAL SURVEY, NATIONAL HYDROGRAPHY DATASET, 07/14/2015. COORDINATE SYSTEM: NAD 1983 UTM ZONE 17N TRANSVERSE MERCATOR

DRAWN BY: EES      DATE: 8/25/2015  
APPROVED: BMW      PROJECT #: 60431827





**AECOM**

FOSTER PLAZA 6  
681 ANDERSEN DRIVE  
4TH FLOOR  
PITTSBURGH, PA 15220  
412-503-4700

**FIGURE 3**

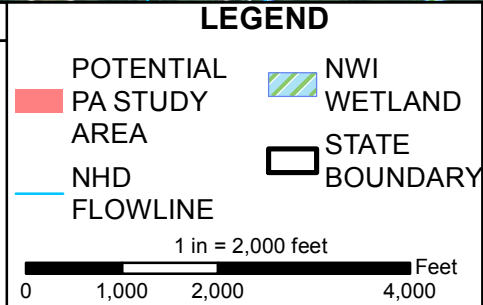
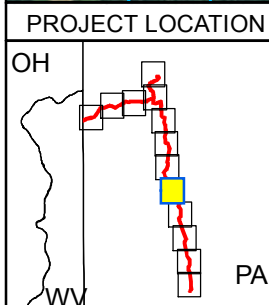
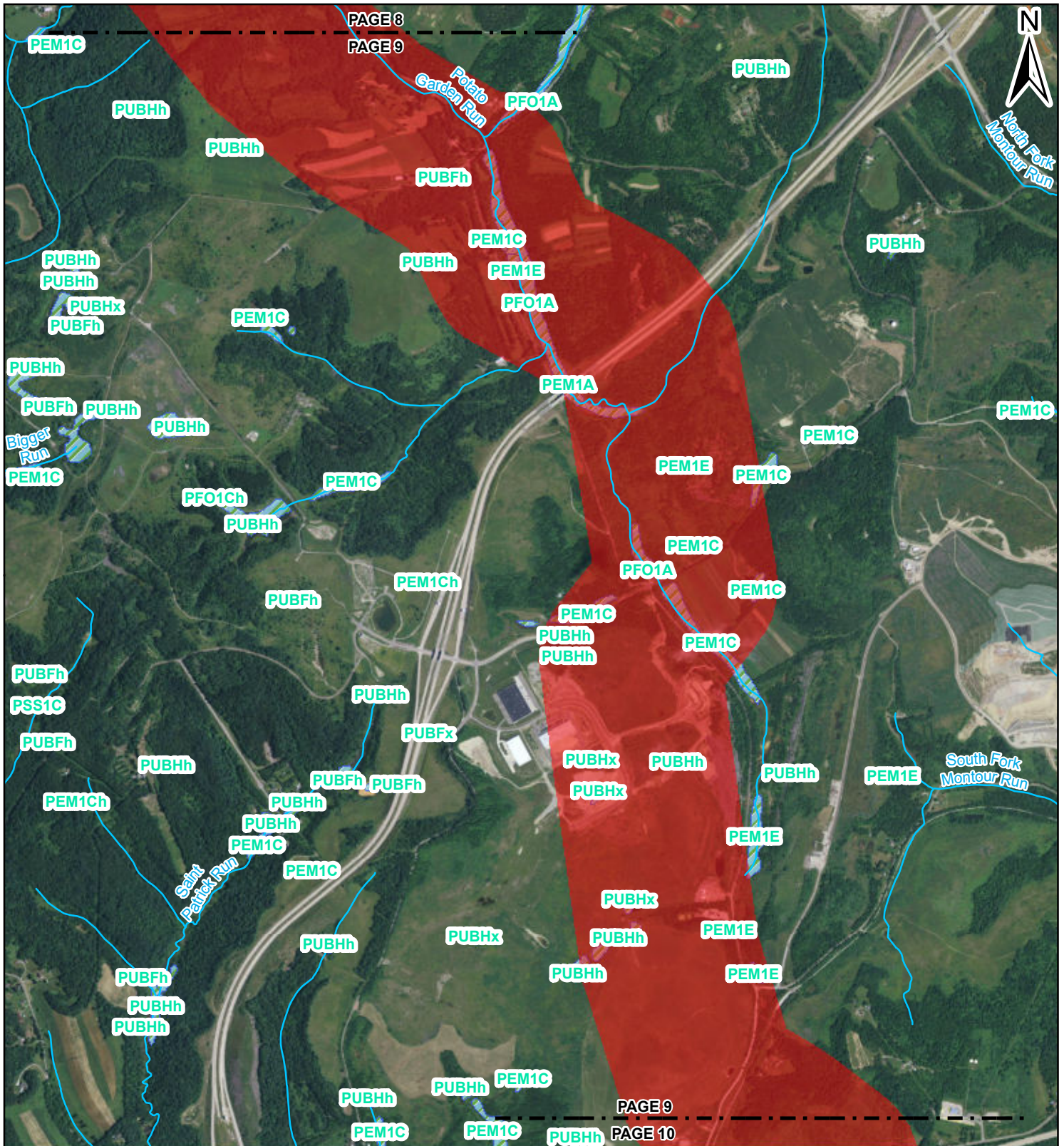
**PENNSYLVANIA AERIAL MAP**  
Page 8 of 13

**SHELL PIPELINE COMPANY, LP**  
**NORTHEAST PIPELINE PROJECT**

REFERENCE: AERIAL LAYER - SOURCE: ESRI, DIGITALGLOBE, GEOEYE, I-CUBED, EARTHSTAR GEOGRAPHICS, CNES/AIRBUS DS, USDA, USGS, AEX, GETMAPPING, AERGRID, IGN, IGP, SWISS TOPO, AND THE GIS USER COMMUNITY. NWI WETLAND LAYER - U.S. FISH AND WILDLIFE, NATIONAL WETLANDS INVENTORY FOR PA-POLYGON, 10/01/2013. NHD FLOWLINE LAYER - UNITED STATES GEOLOGICAL SURVEY, NATIONAL HYDROGRAPHY DATASET, 07/14/2015. COORDINATE SYSTEM: NAD 1983 UTM ZONE 17N TRANSVERSE MERCATOR

DRAWN BY: EES    DATE: 8/25/2015  
APPROVED: BMW    PROJECT #: 60431827





**AECOM**

FOSTER PLAZA 6  
681 ANDERSEN DRIVE  
4TH FLOOR  
PITTSBURGH, PA 15220  
412-503-4700

**FIGURE 3**

**PENNSYLVANIA  
AERIAL MAP**  
Page 9 of 13

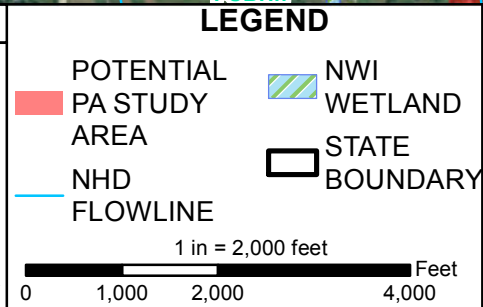
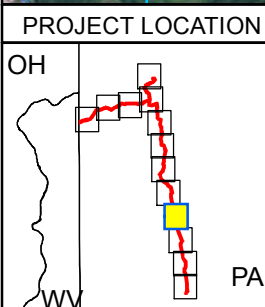
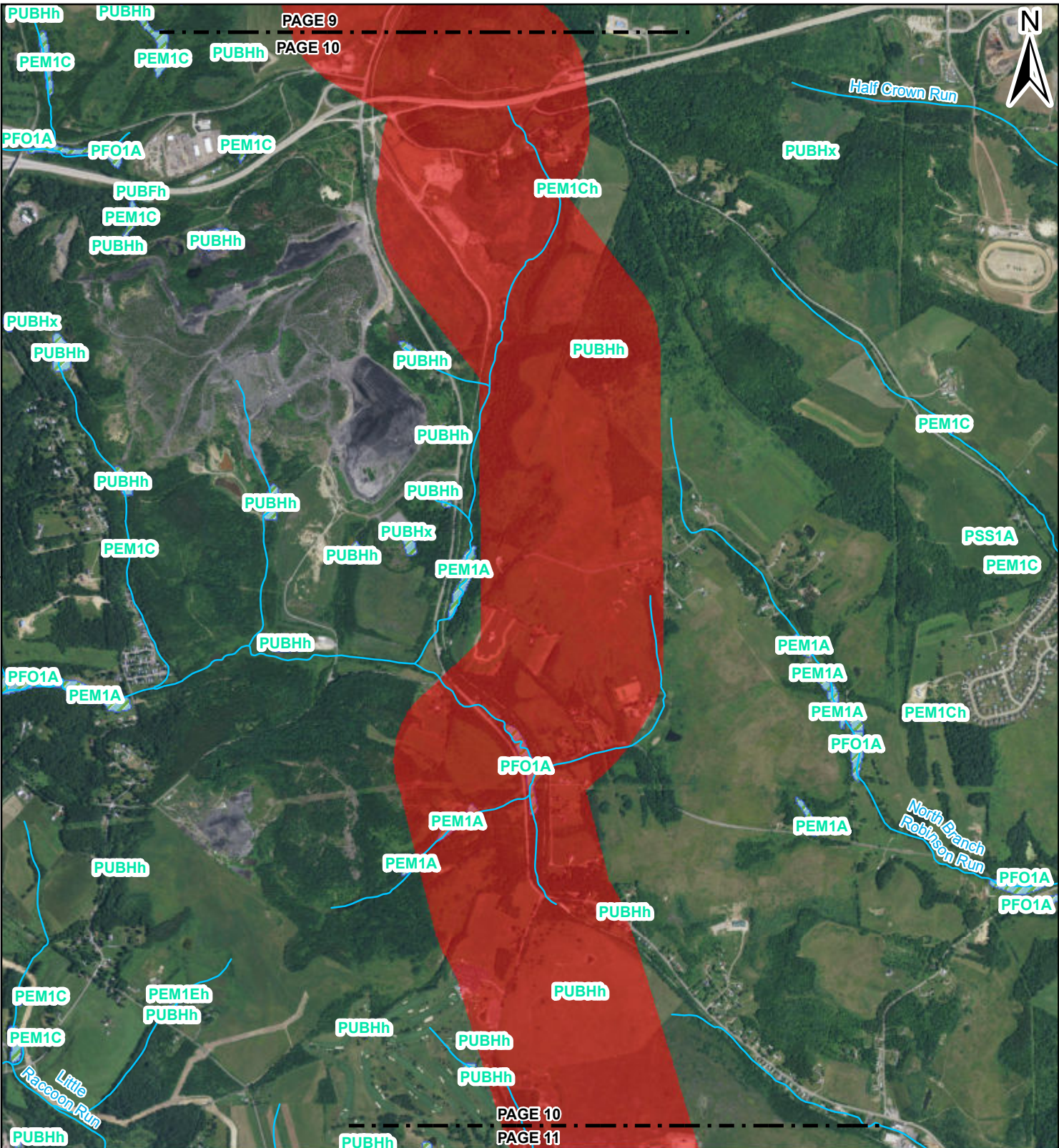
---

**SHELL PIPELINE COMPANY, LP  
NORTHEAST PIPELINE PROJECT**

REFERENCE: AERIAL LAYER - SOURCE: ESRI, DIGITALGLOBE, GEOEYE, I-CUBED, EARTHSTAR GEOGRAPHICS, CNES/AIRBUS DS, USDA, USGS, AEX, GETMAPPING, AERGRID, IGN, IGP, SWISS TOPO, AND THE GIS USER COMMUNITY. NWI WETLAND LAYER - U.S. FISH AND WILDLIFE, NATIONAL WETLANDS INVENTORY FOR PA-POLYGON, 10/01/2013. NHD FLOWLINE LAYER - UNITED STATES GEOLOGICAL SURVEY, NATIONAL HYDROGRAPHY DATASET, 07/14/2015. COORDINATE SYSTEM: NAD 1983 UTM ZONE 17N TRANSVERSE MERCATOR

DRAWN BY: EES      DATE: 8/25/2015  
APPROVED: BMW      PROJECT #: 60431827





**AECOM**

FOSTER PLAZA 6  
681 ANDERSEN DRIVE  
4TH FLOOR  
PITTSBURGH, PA 15220  
412-503-4700

**FIGURE 3**

**PENNSYLVANIA AERIAL MAP**  
Page 10 of 13

**SHELL PIPELINE COMPANY, LP  
NORTHEAST PIPELINE PROJECT**

REFERENCE: AERIAL LAYER - SOURCE: ESRI, DIGITALGLOBE, GEOEYE, I-CUBED, EARTHSTAR GEOGRAPHICS, CNES/AIRBUS DS, USDA, USGS, AEX, GETMAPPING, AEROGRIID, IGN, IGP, SWISSTOPO, AND THE GIS USER COMMUNITY. NWI WETLAND LAYER - U.S. FISH AND WILDLIFE, NATIONAL WETLANDS INVENTORY FOR PA-POLYGON, 10/01/2013. NHD FLOWLINE LAYER - UNITED STATES GEOLOGICAL SURVEY, NATIONAL HYDROGRAPHY DATASET, 07/14/2015. COORDINATE SYSTEM: NAD 1983 UTM ZONE 17N TRANSVERSE MERCATOR

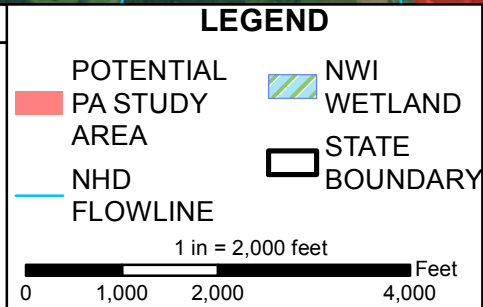
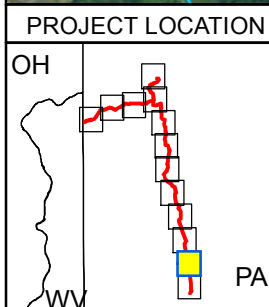
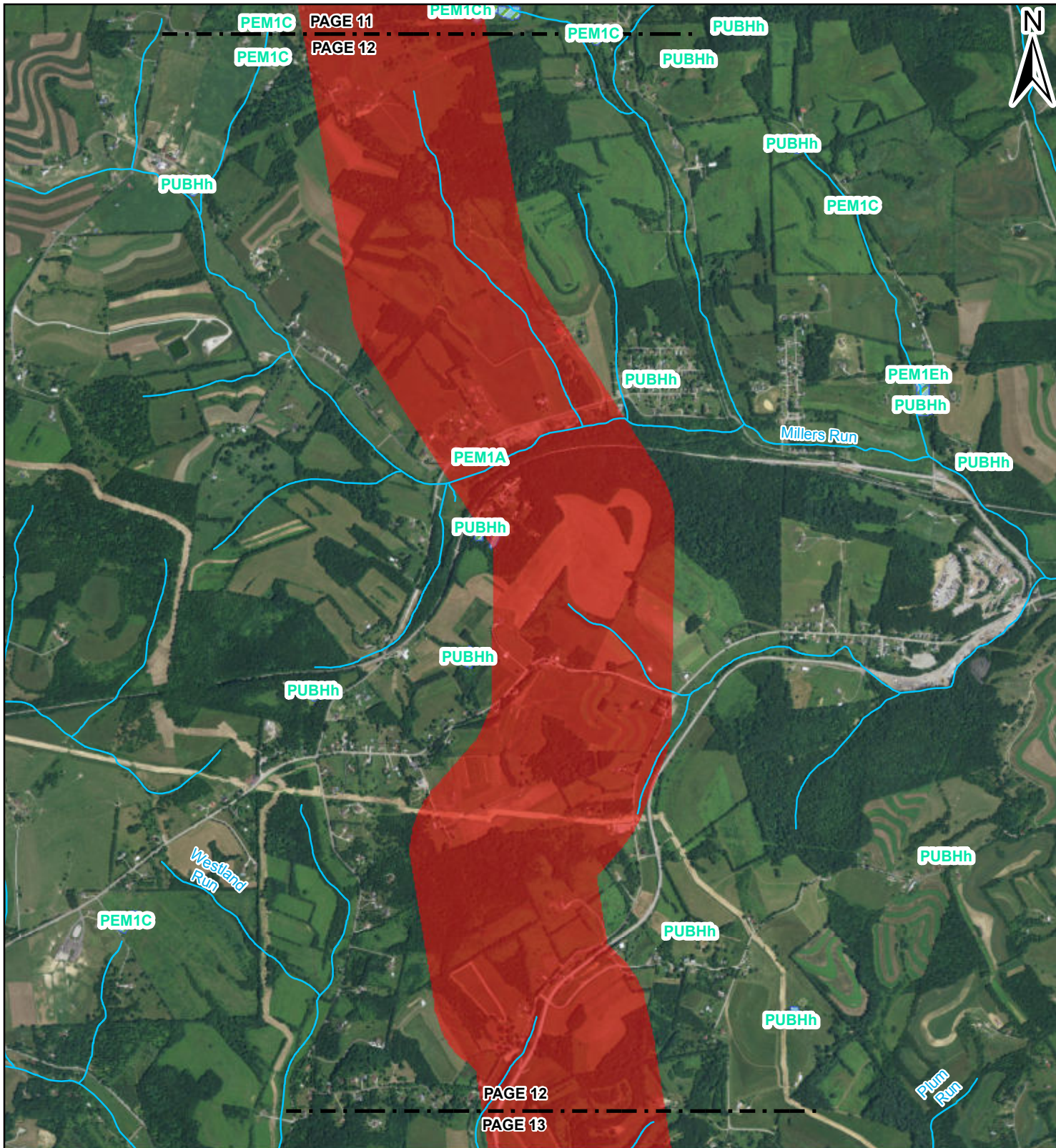
DRAWN BY: EES      DATE: 8/25/2015  
APPROVED: BMW      PROJECT #: 60431827

Y:\GIS\Projects\Shell\Northeast Pipeline\MXDs\T&EMapping\_Figure3\_Aerial\_PA\_MapBook\_150722.mxd









**AECOM**

FOSTER PLAZA 6  
681 ANDERSEN DRIVE  
4TH FLOOR  
PITTSBURGH, PA 15220  
412-503-4700

**FIGURE 3**

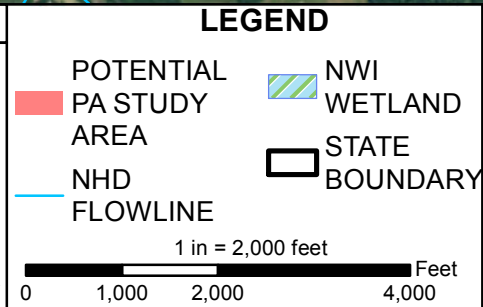
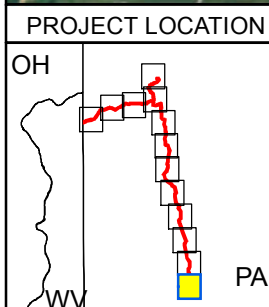
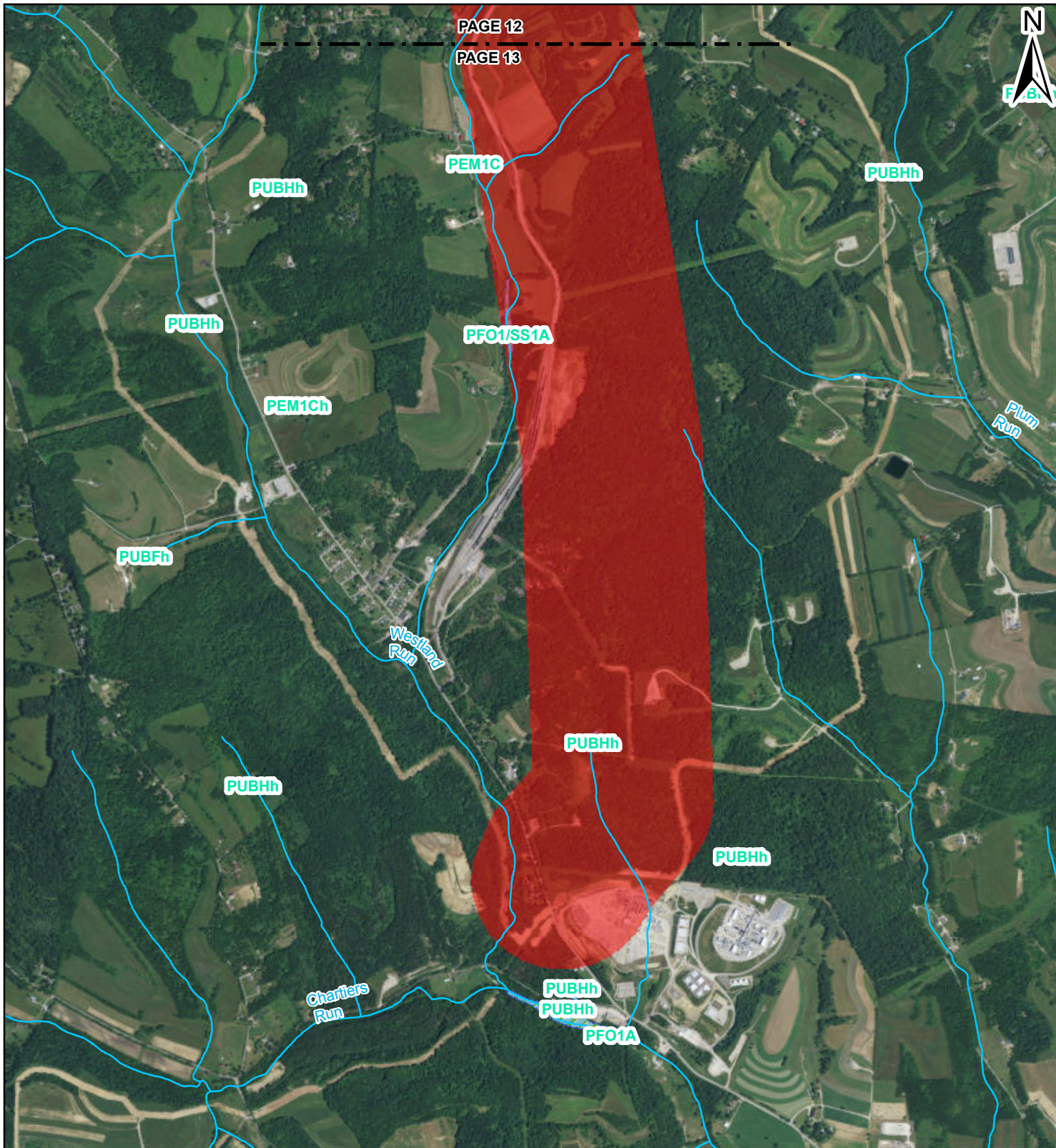
**PENNSYLVANIA AERIAL MAP**  
Page 12 of 13

**SHELL PIPELINE COMPANY, LP**  
**NORTHEAST PIPELINE PROJECT**

REFERENCE: AERIAL LAYER - SOURCE: ESRI, DIGITALGLOBE, GEOEYE, ICUBED, EARTHSTAR GEOGRAPHICS, CNES/AIRBUS DS, USDA, USGS, AEX, GETMAPPING, AEROGRIID, IGN, IGP, SWISS TOPO, AND THE GIS USER COMMUNITY. NWI WETLAND LAYER - U.S. FISH AND WILDLIFE, NATIONAL WETLANDS INVENTORY FOR PA-POLYGON, 10/01/2013. NHD FLOWLINE LAYER - UNITED STATES GEOLOGICAL SURVEY, NATIONAL HYDROGRAPHY DATASET, 07/14/2015. COORDINATE SYSTEM: NAD 1983 UTM ZONE 17N TRANSVERSE MERCATOR

DRAWN BY: EES    DATE: 8/25/2015  
APPROVED: BMW    PROJECT #: 60431827





**AECOM**

FOSTER PLAZA 6  
681 ANDERSEN DRIVE  
4TH FLOOR  
PITTSBURGH, PA 15220  
412-503-4700

**FIGURE 3**

**PENNSYLVANIA AERIAL MAP**  
Page 13 of 13

**SHELL PIPELINE COMPANY, LP**  
**NORTHEAST PIPELINE PROJECT**

REFERENCE: AERIAL LAYER - SOURCE: ESRI, DIGITALGLOBE, GEOEYE, I-CUBED, EARTHSTAR GEOGRAPHICS, ONES/AIRBUS DS, USDA, USGS, AEX, GETMAPPING, AERGRID, IGN, IGP, SWISS TOPO, AND THE GIS USER COMMUNITY. NWI WETLAND LAYER - U.S. FISH AND WILDLIFE, NATIONAL WETLANDS INVENTORY FOR PA-POLYGON, 10/01/2013. NHD FLOWLINE LAYER - UNITED STATES GEOLOGICAL SURVEY, NATIONAL HYDROGRAPHY DATASET, 07/14/2015. COORDINATE SYSTEM: NAD 1983 UTM ZONE 17N TRANSVERSE MERCATOR

DRAWN BY: EES      DATE: 8/25/2015  
APPROVED: BMW      PROJECT #: 60431827