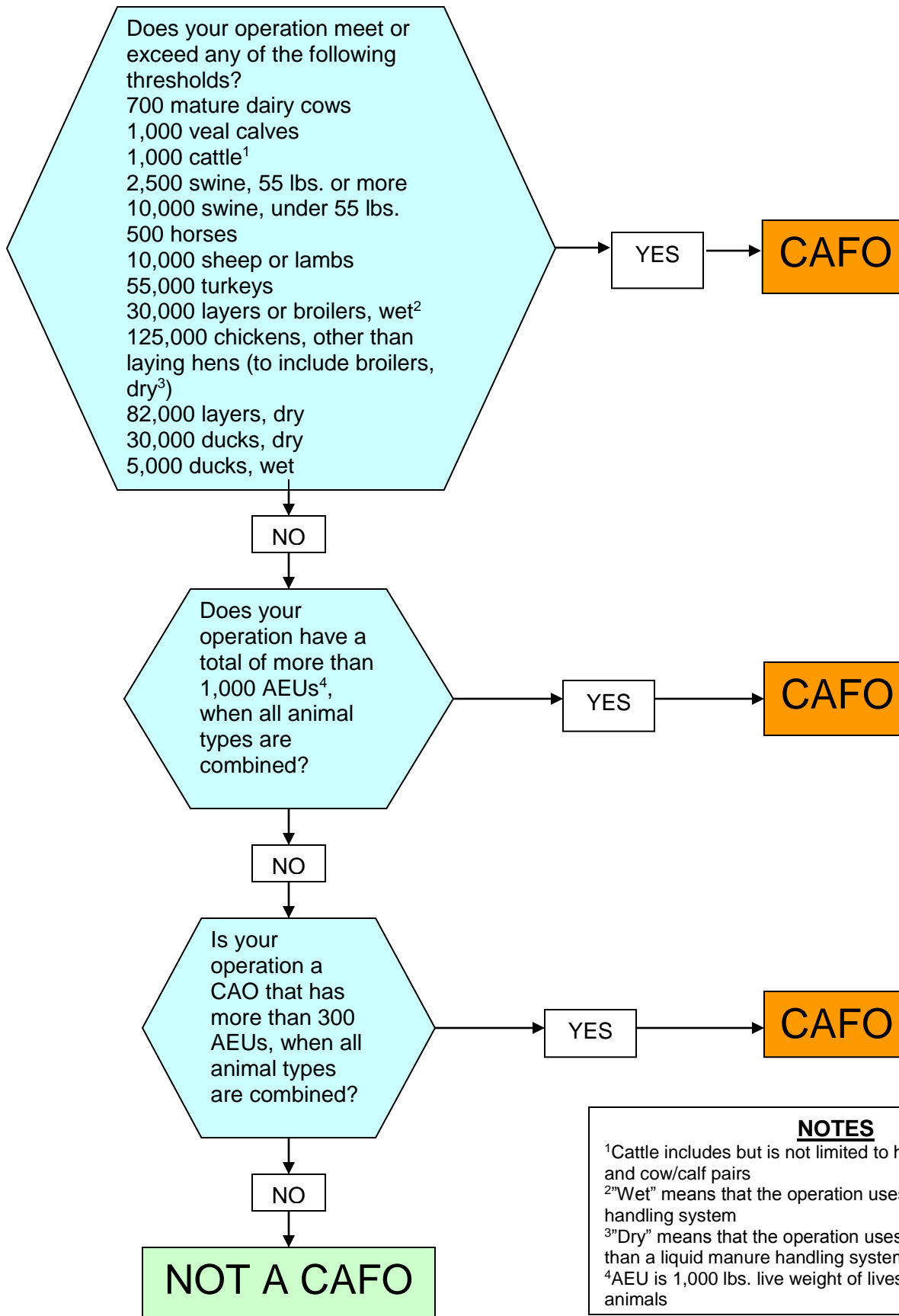


# IS MY OPERATION A CAFO ?



## NOTES

- <sup>1</sup>Cattle includes but is not limited to heifers, steers, bulls, and cow/calf pairs
- <sup>2</sup>"Wet" means that the operation uses a liquid manure handling system
- <sup>3</sup>"Dry" means that the operation uses something other than a liquid manure handling system
- <sup>4</sup>AEU is 1,000 lbs. live weight of livestock or poultry animals

\*Any agricultural operation defined as a Medium CAFO under 40 CFR 122.23(b)(6)(i) or as a Small CAFO under 40 CFR 122.23(b)(9) that discharges pollutants to surface waters as described in 40 CFR 122.23(b)(6)(ii).

\*Any agricultural operation that is defined as an Animal Feeding Operation (AFO) under 40 CFR 122.23(b)(1) and is designated as a CAFO by the U.S. Environmental Protection Agency (EPA) or DEP under 40 CFR 122.23(c).