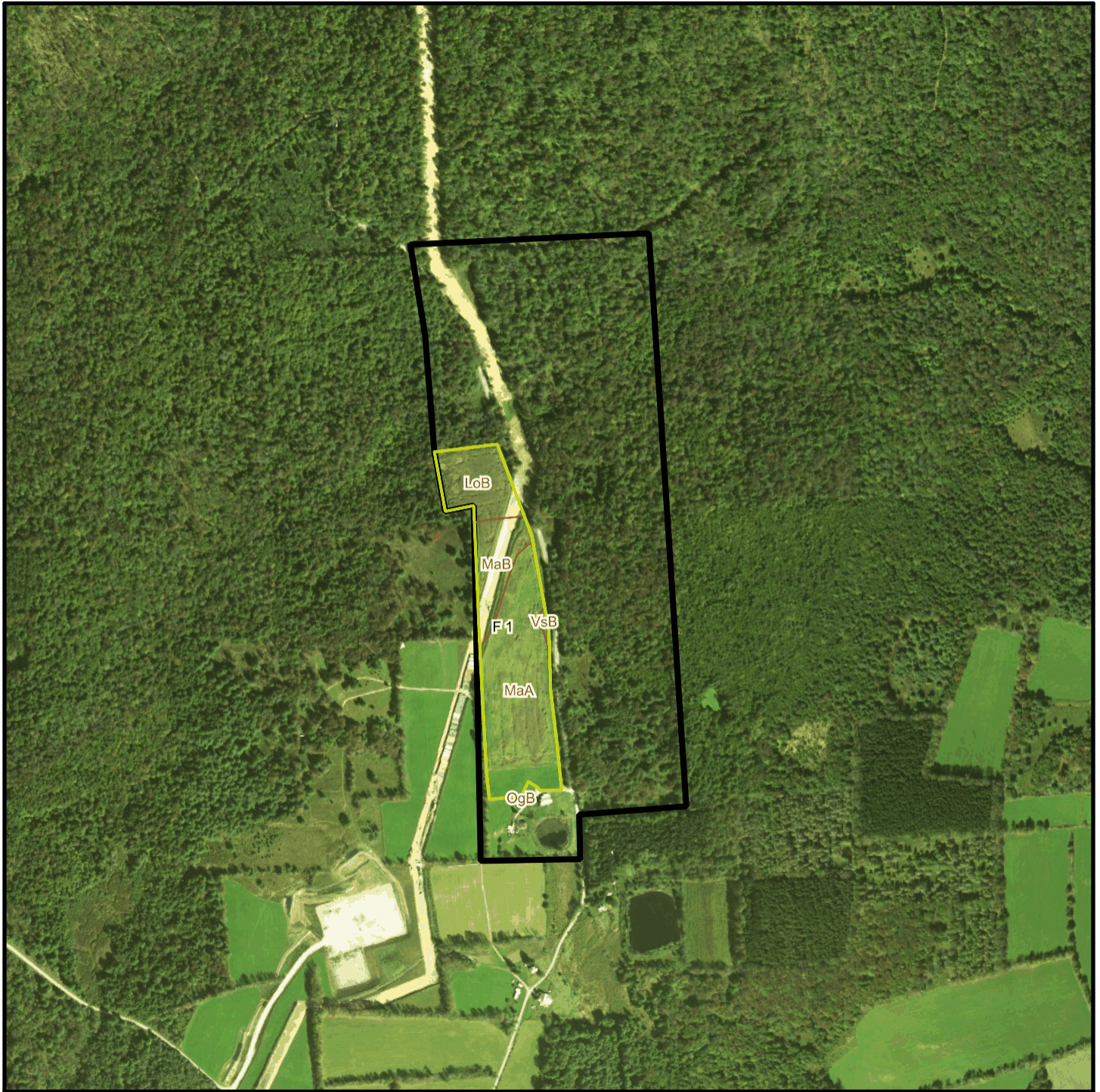
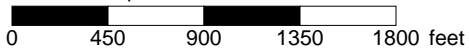


# Bishcroft T 166 Soil Map



\* 900.0 feet per inch



## Soil Acreages By Field

Field	Label	Musym	Muname	Comp	%	Acres	Drainage Class	Farmland Class	Tfact	Kfact
F 1	F 1	LoB	Lordstown channery loam, 3 to 12 percent slopes	Lordstown	100	4.23	Well drained	Farmland of statewide importance	3	0.43
F 1	F 1	MaA	Mardin channery silt loam, 0 to 3 percent slopes	Mardin	85	12.51	Moderately well drained	All areas are prime farmland	3	0.32
F 1	F 1	MaB	Mardin channery silt loam, 3 to 8 percent slopes	Mardin	90	3.56	Moderately well drained	All areas are prime farmland	3	0.32
F 1	F 1	OgB	Oquaga channery loam, 3 to 12 percent slopes	Oquaga	100	< 0.01	Well drained	Farmland of statewide importance	3	0.64
F 1	F 1	VsB	Volusia channery silt loam, 0 to 8 percent slopes, extremely stony	Volusia	90	0.22	Somewhat poorly drained	Not prime farmland	3	0.37

## Soil Acreages For Farm

Musym	Muname	Comp	%	Acres	Drainage Class	Farmland Class	Tfact	Kfact
LoB	Lordstown channery loam, 3 to 12 percent slopes	Lordstown	100	4.23	Well drained	Farmland of statewide importance	3	0.43
MaA	Mardin channery silt loam, 0 to 3 percent slopes	Mardin	85	12.51	Moderately well drained	All areas are prime farmland	3	0.32
MaB	Mardin channery silt loam, 3 to 8 percent slopes	Mardin	90	3.56	Moderately well drained	All areas are prime farmland	3	0.32
OgB	Oquaga channery loam, 3 to 12 percent slopes	Oquaga	100	0	Well drained	Farmland of statewide importance	3	0.64
VsB	Volusia channery silt loam, 0 to 8 percent slopes, extremely stony	Volusia	90	0.22	Somewhat poorly drained	Not prime farmland	3	0.37