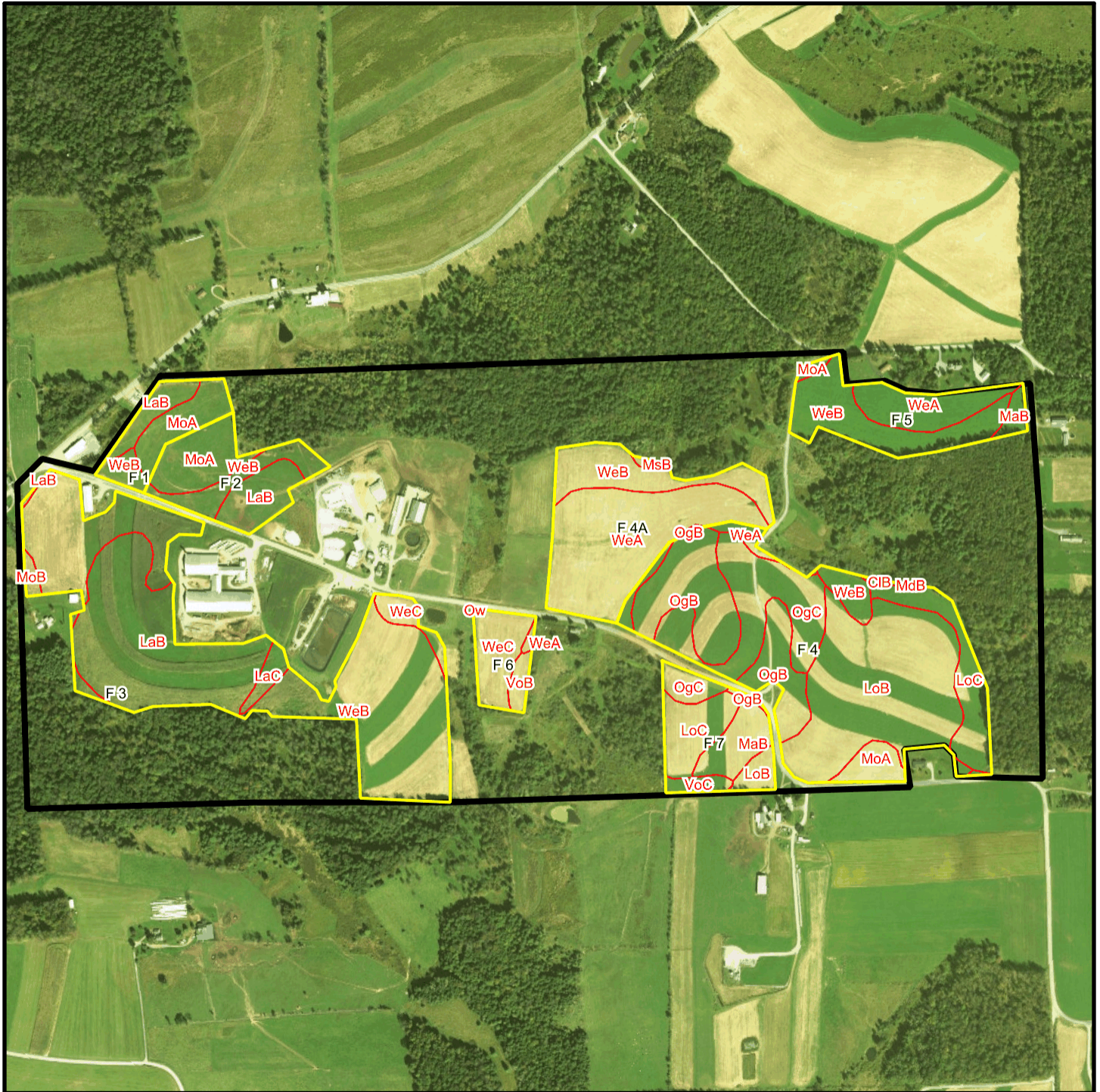
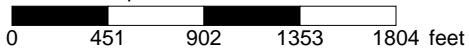


Bishcroft T 4884 Soil Map



* 902.0 feet per inch



Soil Acreages By Field

Field	Label	Musym	Muname	Comp	%	Acres	Drainage Class	Farmland Class	Tfact	Kfact
F 1	F 1	LaB	Lackawanna channery loam, 3 to 12 percent slopes	Lackawanna	100	1.87	Well drained	All areas are prime farmland	3	0.64
F 1	F 1	MoA	Morris gravelly silt loam, 0 to 3 percent slopes	Morris	70	3.23	Somewhat poorly drained	Farmland of statewide importance	3	0.55
F 1	F 1	WeB	Wellsboro channery loam, 3 to 8 percent slopes	Wellsboro	80	1.09	Moderately well drained	All areas are prime farmland	3	0.32
F 2	F 2	LaB	Lackawanna channery loam, 3 to 12 percent slopes	Lackawanna	100	3.26	Well drained	All areas are prime farmland	3	0.64
F 2	F 2	MoA	Morris gravelly silt loam, 0 to 3 percent slopes	Morris	70	4.24	Somewhat poorly drained	Farmland of statewide importance	3	0.55
F 2	F 2	WeB	Wellsboro channery loam, 3 to 8 percent slopes	Wellsboro	80	2.91	Moderately well drained	All areas are prime farmland	3	0.32
F 3	F 3	LaB	Lackawanna channery loam, 3 to 12 percent slopes	Lackawanna	100	17.24	Well drained	All areas are prime farmland	3	0.64
F 3	F 3	LaC	Lackawanna channery loam, 12 to 20 percent slopes	Lackawanna	100	1.04	Well drained	Farmland of statewide importance	3	0.64
F 3	F 3	MoB	Morris gravelly silt loam, 3 to 8 percent slopes	Morris	77	0.46	Somewhat poorly drained	Farmland of statewide importance	3	0.55
F 3	F 3	WeB	Wellsboro channery loam, 3 to 8 percent slopes	Wellsboro	80	27.05	Moderately well drained	All areas are prime farmland	3	0.32
F 3	F 3	WeC	Wellsboro channery loam, 8 to 15 percent slopes	Wellsboro	85	1.37	Moderately well drained	Farmland of statewide importance	3	0.32
F 4	F 4	CIB	Chippewa very stony silt loam, 0 to 8 percent slopes	Chippewa	100	0.15	Very poorly drained	Not prime farmland	3	0.28
F 4	F 4	LoB	Lordstown channery loam, 3 to 12 percent slopes	Lordstown	100	19.87	Well drained	Farmland of statewide importance	3	0.43

Field	Label	Musym	Muname	Comp	%	Acres	Drainage Class	Farmland Class	Tfact	Kfact
F 4	F 4	LoC	Lordstown channery loam, 12 to 20 percent slopes	Lordstown	100	4.84	Well drained	Farmland of statewide importance	3	0.43
F 4	F 4	MdB	Mardin very stony silt loam, 0 to 8 percent slopes	Mardin	85	0.01	Moderately well drained	Not prime farmland	3	0.32
F 4	F 4	MoA	Morris gravelly silt loam, 0 to 3 percent slopes	Morris	70	1.88	Somewhat poorly drained	Farmland of statewide importance	3	0.55
F 4	F 4	OgB	Oquaga channery loam, 3 to 12 percent slopes	Oquaga	100	11.39	Well drained	Farmland of statewide importance	3	0.64
F 4	F 4	OgC	Oquaga channery loam, 12 to 20 percent slopes	Oquaga	100	9.05	Well drained	Farmland of statewide importance	3	0.64
F 4	F 4	WeA	Wellsboro channery loam, 0 to 3 percent slopes	Wellsboro	85	1.44	Moderately well drained	All areas are prime farmland	3	0.32
F 4	F 4	WeB	Wellsboro channery loam, 3 to 8 percent slopes	Wellsboro	80	1.54	Moderately well drained	All areas are prime farmland	3	0.32
F 4A	F 4A	MsB	Morris very stony silt loam, 0 to 8 percent slopes	Morris	80	0.22	Somewhat poorly drained	Not prime farmland	3	0.32
F 4A	F 4A	OgB	Oquaga channery loam, 3 to 12 percent slopes	Oquaga	100	0.1	Well drained	Farmland of statewide importance	3	0.64
F 4A	F 4A	WeA	Wellsboro channery loam, 0 to 3 percent slopes	Wellsboro	85	14.37	Moderately well drained	All areas are prime farmland	3	0.32
F 4A	F 4A	WeB	Wellsboro channery loam, 3 to 8 percent slopes	Wellsboro	80	5.59	Moderately well drained	All areas are prime farmland	3	0.32
F 5	F 5	MaB	Mardin channery silt loam, 3 to 8 percent slopes	Mardin	90	0.82	Moderately well drained	All areas are prime farmland	3	0.32
F 5	F 5	MoA	Morris gravelly silt loam, 0 to 3 percent slopes	Morris	70	0.32	Somewhat poorly drained	Farmland of statewide importance	3	0.55

Field	Label	Musym	Muname	Comp	%	Acres	Drainage Class	Farmland Class	Tfact	Kfact
F 5	F 5	WeA	Wellsboro channery loam, 0 to 3 percent slopes	Wellsboro	85	4.27	Moderately well drained	All areas are prime farmland	3	0.32
F 5	F 5	WeB	Wellsboro channery loam, 3 to 8 percent slopes	Wellsboro	80	7.04	Moderately well drained	All areas are prime farmland	3	0.32
F 6	F 6	Ow	Orrville silt loam	Orrville	80	0.01	Somewhat poorly drained	Farmland of statewide importance	5	0.37
F 6	F 6	VoB	Volusia channery silt loam, 3 to 8 percent slopes	Volusia	90	0.85	Somewhat poorly drained	Farmland of statewide importance	3	0.37
F 6	F 6	WeA	Wellsboro channery loam, 0 to 3 percent slopes	Wellsboro	85	0.19	Moderately well drained	All areas are prime farmland	3	0.32
F 6	F 6	WeC	Wellsboro channery loam, 8 to 15 percent slopes	Wellsboro	85	3.59	Moderately well drained	Farmland of statewide importance	3	0.32
F 7	F 7	LoB	Lordstown channery loam, 3 to 12 percent slopes	Lordstown	100	1.14	Well drained	Farmland of statewide importance	3	0.43
F 7	F 7	LoC	Lordstown channery loam, 12 to 20 percent slopes	Lordstown	100	3.72	Well drained	Farmland of statewide importance	3	0.43
F 7	F 7	MaB	Mardin channery silt loam, 3 to 8 percent slopes	Mardin	90	2.97	Moderately well drained	All areas are prime farmland	3	0.32
F 7	F 7	OgB	Oquaga channery loam, 3 to 12 percent slopes	Oquaga	100	0.19	Well drained	Farmland of statewide importance	3	0.64
F 7	F 7	OgC	Oquaga channery loam, 12 to 20 percent slopes	Oquaga	100	1.43	Well drained	Farmland of statewide importance	3	0.64
F 7	F 7	VoC	Volusia channery silt loam, 8 to 15 percent slopes	Volusia	90	0.86	Somewhat poorly drained	Farmland of statewide importance	3	0.37

Soil Acreages For Farm

Musym	Muname	Comp	%	Acres	Drainage Class	Farmland Class	Tfact	Kfact
LaB	Lackawanna channery loam, 3 to 12 percent slopes	Lackawanna	100	22.37	Well drained	All areas are prime farmland	3	0.64
MoA	Morris gravelly silt loam, 0 to 3 percent slopes	Morris	70	9.67	Somewhat poorly drained	Farmland of statewide importance	3	0.55
WeB	Wellsboro channery loam, 3 to 8 percent slopes	Wellsboro	80	45.22	Moderately well drained	All areas are prime farmland	3	0.32
LaC	Lackawanna channery loam, 12 to 20 percent slopes	Lackawanna	100	1.04	Well drained	Farmland of statewide importance	3	0.64
MoB	Morris gravelly silt loam, 3 to 8 percent slopes	Morris	77	0.46	Somewhat poorly drained	Farmland of statewide importance	3	0.55
WeC	Wellsboro channery loam, 8 to 15 percent slopes	Wellsboro	85	4.96	Moderately well drained	Farmland of statewide importance	3	0.32
Ow	Orrville silt loam	Orrville	80	0.01	Somewhat poorly drained	Farmland of statewide importance	5	0.37
VoB	Volusia channery silt loam, 3 to 8 percent slopes	Volusia	90	0.85	Somewhat poorly drained	Farmland of statewide importance	3	0.37
WeA	Wellsboro channery loam, 0 to 3 percent slopes	Wellsboro	85	20.27	Moderately well drained	All areas are prime farmland	3	0.32
MsB	Morris very stony silt loam, 0 to 8 percent slopes	Morris	80	0.22	Somewhat poorly drained	Not prime farmland	3	0.32
OgB	Oquaga channery loam, 3 to 12 percent slopes	Oquaga	100	11.68	Well drained	Farmland of statewide importance	3	0.64
CIB	Chippewa very stony silt loam, 0 to 8 percent slopes	Chippewa	100	0.15	Very poorly drained	Not prime farmland	3	0.28
LoB	Lordstown channery loam, 3 to 12 percent slopes	Lordstown	100	21.01	Well drained	Farmland of statewide importance	3	0.43

Musym	Muname	Comp	%	Acres	Drainage Class	Farmland Class	Tfact	Kfact
LoC	Lordstown channery loam, 12 to 20 percent slopes	Lordstown	100	8.56	Well drained	Farmland of statewide importance	3	0.43
MdB	Mardin very stony silt loam, 0 to 8 percent slopes	Mardin	85	0.01	Moderately well drained	Not prime farmland	3	0.32
OgC	Oquaga channery loam, 12 to 20 percent slopes	Oquaga	100	10.48	Well drained	Farmland of statewide importance	3	0.64
MaB	Mardin channery silt loam, 3 to 8 percent slopes	Mardin	90	3.79	Moderately well drained	All areas are prime farmland	3	0.32
VoC	Volusia channery silt loam, 8 to 15 percent slopes	Volusia	90	0.86	Somewhat poorly drained	Farmland of statewide importance	3	0.37