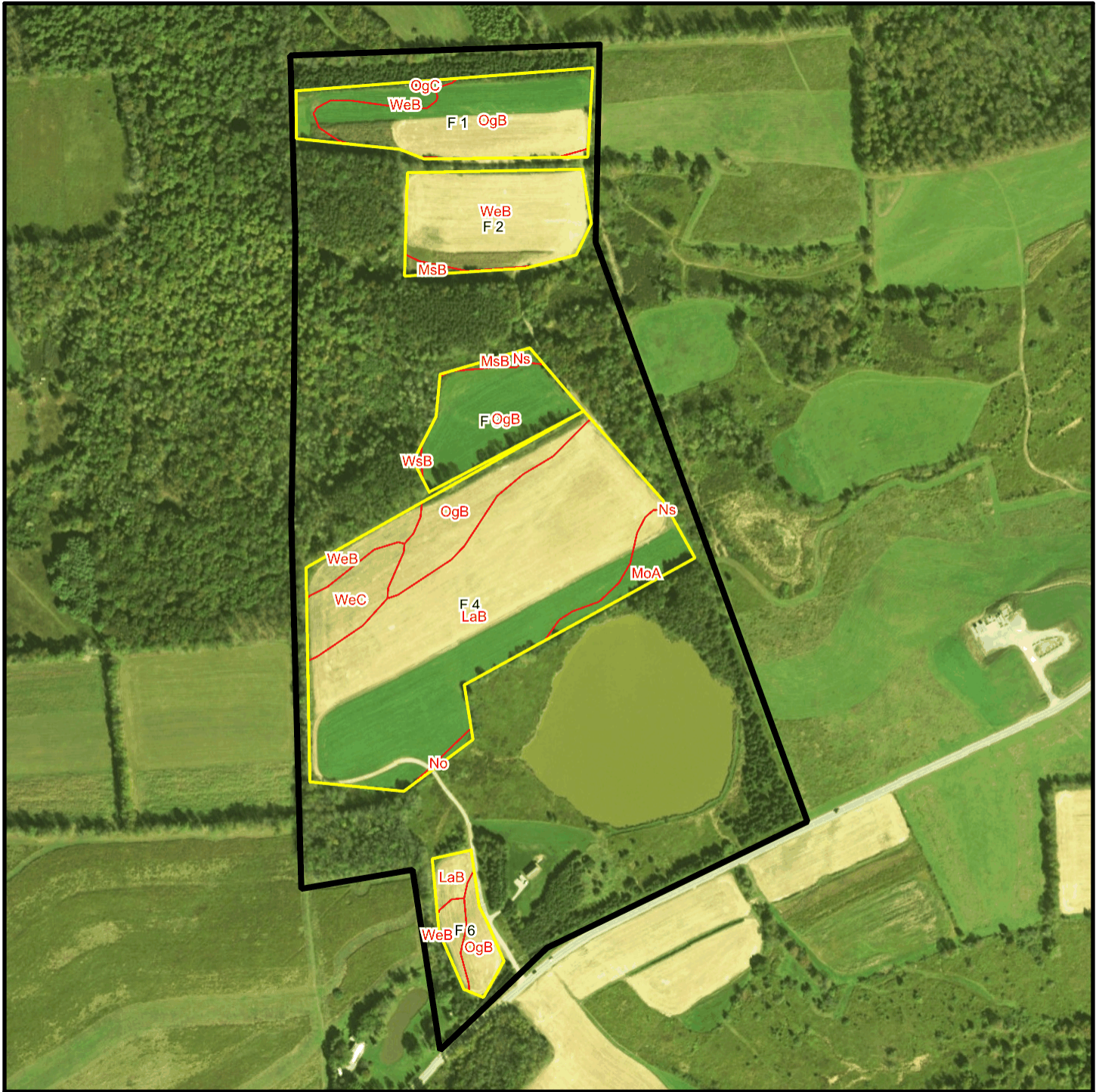


Bishcroft T 5564 Soil Map



* 534.0 feet per inch



Soil Acreages By Field

Field	Label	Musym	Muname	Comp	%	Acres	Drainage Class	Farmland Class	Tfact	Kfact
F 1	F 1	OgB	Oquaga channery loam, 3 to 12 percent slopes	Oquaga	100	5.49	Well drained	Farmland of statewide importance	3	0.64
F 1	F 1	OgC	Oquaga channery loam, 12 to 20 percent slopes	Oquaga	100	0.07	Well drained	Farmland of statewide importance	3	0.64
F 1	F 1	WeB	Wellsboro channery loam, 3 to 8 percent slopes	Wellsboro	80	1.11	Moderately well drained	All areas are prime farmland	3	0.32
F 2	F 2	MsB	Morris very stony silt loam, 0 to 8 percent slopes	Morris	80	0.22	Somewhat poorly drained	Not prime farmland	3	0.32
F 2	F 2	WeB	Wellsboro channery loam, 3 to 8 percent slopes	Wellsboro	80	5.21	Moderately well drained	All areas are prime farmland	3	0.32
F 3	F 3	MsB	Morris very stony silt loam, 0 to 8 percent slopes	Morris	80	0.1	Somewhat poorly drained	Not prime farmland	3	0.32
F 3	F 3	Ns	Norwich very stony silt loam	Norwich	97	0.14	Very poorly drained	Not prime farmland	3	0.37
F 3	F 3	OgB	Oquaga channery loam, 3 to 12 percent slopes	Oquaga	100	3.72	Well drained	Farmland of statewide importance	3	0.64
F 3	F 3	WsB	Wellsboro very stony loam, 0 to 8 percent slopes	Wellsboro	85	0.04	Moderately well drained	Not prime farmland	3	0.32
F 4	F 4	LaB	Lackawanna channery loam, 3 to 12 percent slopes	Lackawanna	100	17.29	Well drained	All areas are prime farmland	3	0.64
F 4	F 4	MoA	Morris gravelly silt loam, 0 to 3 percent slopes	Morris	70	1.34	Somewhat poorly drained	Farmland of statewide importance	3	0.55
F 4	F 4	No	Norwich silt loam	Norwich	97	0.12	Very poorly drained	Not prime farmland	3	0.37
F 4	F 4	Ns	Norwich very stony silt loam	Norwich	97	< 0.01	Very poorly drained	Not prime farmland	3	0.37

Field	Label	Musym	Muname	Comp	%	Acres	Drainage Class	Farmland Class	Tfact	Kfact
F 4	F 4	OgB	Oquaga channery loam, 3 to 12 percent slopes	Oquaga	100	2.67	Well drained	Farmland of statewide importance	3	0.64
F 4	F 4	WeB	Wellsboro channery loam, 3 to 8 percent slopes	Wellsboro	80	0.93	Moderately well drained	All areas are prime farmland	3	0.32
F 4	F 4	WeC	Wellsboro channery loam, 8 to 15 percent slopes	Wellsboro	85	1.72	Moderately well drained	Farmland of statewide importance	3	0.32
F 6	F 6	LaB	Lackawanna channery loam, 3 to 12 percent slopes	Lackawanna	100	0.53	Well drained	All areas are prime farmland	3	0.64
F 6	F 6	OgB	Oquaga channery loam, 3 to 12 percent slopes	Oquaga	100	0.87	Well drained	Farmland of statewide importance	3	0.64
F 6	F 6	WeB	Wellsboro channery loam, 3 to 8 percent slopes	Wellsboro	80	0.49	Moderately well drained	All areas are prime farmland	3	0.32

Soil Acreages For Farm

Musym	Muname	Comp	%	Acres	Drainage Class	Farmland Class	Tfact	Kfact
OgB	Oquaga channery loam, 3 to 12 percent slopes	Oquaga	100	12.75	Well drained	Farmland of statewide importance	3	0.64
OgC	Oquaga channery loam, 12 to 20 percent slopes	Oquaga	100	0.07	Well drained	Farmland of statewide importance	3	0.64
WeB	Wellsboro channery loam, 3 to 8 percent slopes	Wellsboro	80	7.74	Moderately well drained	All areas are prime farmland	3	0.32
MsB	Morris very stony silt loam, 0 to 8 percent slopes	Morris	80	0.32	Somewhat poorly drained	Not prime farmland	3	0.32
Ns	Norwich very stony silt loam	Norwich	97	0.14	Very poorly drained	Not prime farmland	3	0.37
WsB	Wellsboro very stony loam, 0 to 8 percent slopes	Wellsboro	85	0.04	Moderately well drained	Not prime farmland	3	0.32

Musym	Muname	Comp	%	Acres	Drainage Class	Farmland Class	Tfact	Kfact
LaB	Lackawanna channery loam, 3 to 12 percent slopes	Lackawanna	100	17.82	Well drained	All areas are prime farmland	3	0.64
MoA	Morris gravelly silt loam, 0 to 3 percent slopes	Morris	70	1.34	Somewhat poorly drained	Farmland of statewide importance	3	0.55
No	Norwich silt loam	Norwich	97	0.12	Very poorly drained	Not prime farmland	3	0.37
WeC	Wellsboro channery loam, 8 to 15 percent slopes	Wellsboro	85	1.72	Moderately well drained	Farmland of statewide importance	3	0.32