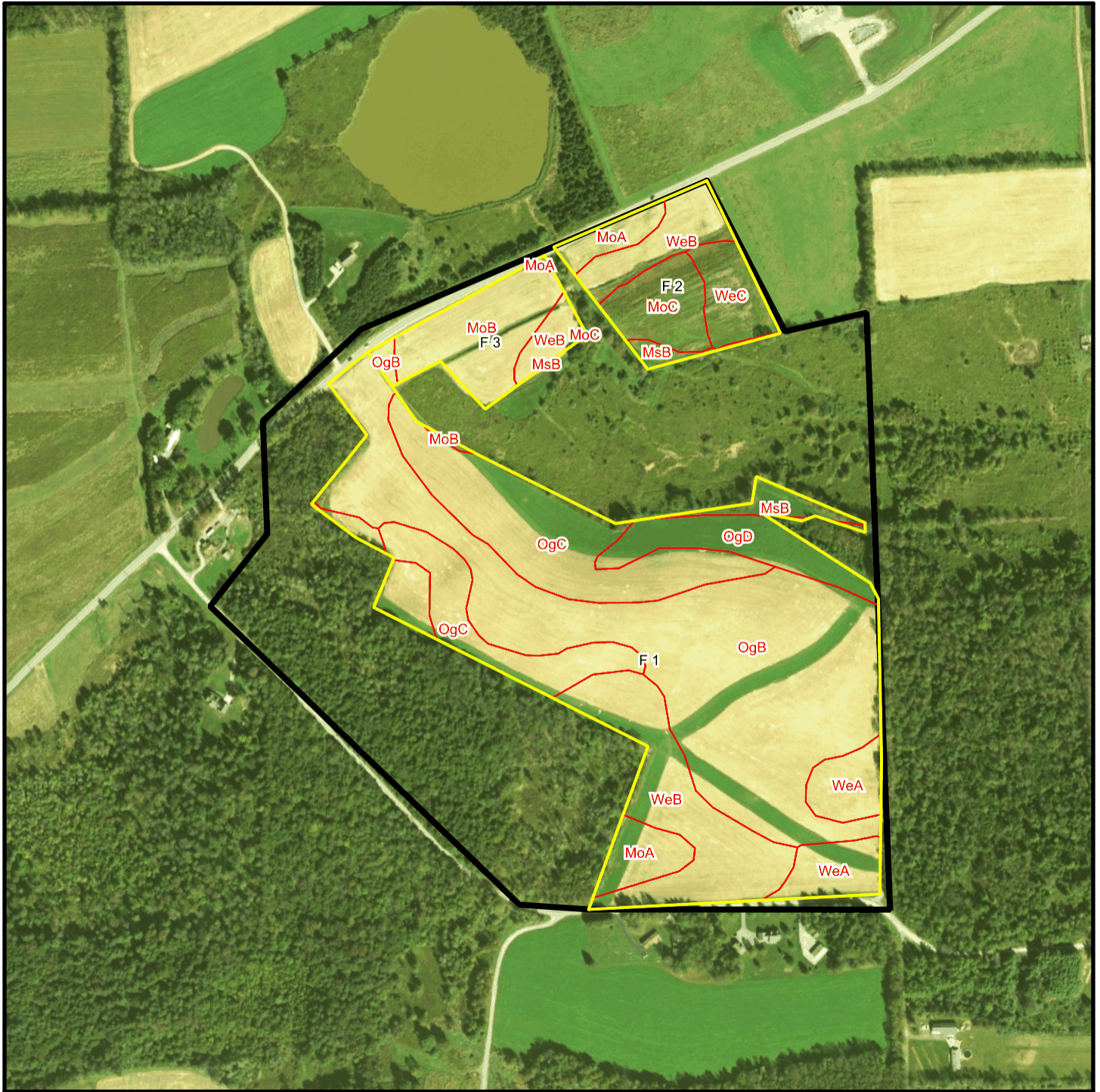


# Bishcroft T 5565 Soil Map



\* 534.0 feet per inch



## Soil Acreages By Field

Field	Label	Musym	Muname	Comp	%	Acres	Drainage Class	Farmland Class	Tfact	Kfact
F 1	F 1	MoA	Morris gravelly silt loam, 0 to 3 percent slopes	Morris	70	1.72	Somewhat poorly drained	Farmland of statewide importance	3	0.55
F 1	F 1	MoB	Morris gravelly silt loam, 3 to 8 percent slopes	Morris	77	0.07	Somewhat poorly drained	Farmland of statewide importance	3	0.55
F 1	F 1	MsB	Morris very stony silt loam, 0 to 8 percent slopes	Morris	80	0.85	Somewhat poorly drained	Not prime farmland	3	0.32
F 1	F 1	OgB	Oquaga channery loam, 3 to 12 percent slopes	Oquaga	100	21.91	Well drained	Farmland of statewide importance	3	0.64
F 1	F 1	OgC	Oquaga channery loam, 12 to 20 percent slopes	Oquaga	100	10.7	Well drained	Farmland of statewide importance	3	0.64
F 1	F 1	OgD	Oquaga channery loam, 20 to 30 percent slopes	Oquaga	100	2.89	Well drained	Not prime farmland	3	0.64
F 1	F 1	WeA	Wellsboro channery loam, 0 to 3 percent slopes	Wellsboro	85	3.04	Moderately well drained	All areas are prime farmland	3	0.32
F 1	F 1	WeB	Wellsboro channery loam, 3 to 8 percent slopes	Wellsboro	80	7.12	Moderately well drained	All areas are prime farmland	3	0.32
F 2	F 2	MoA	Morris gravelly silt loam, 0 to 3 percent slopes	Morris	70	0.96	Somewhat poorly drained	Farmland of statewide importance	3	0.55
F 2	F 2	MoC	Morris gravelly silt loam, 8 to 15 percent slopes	Morris	80	2.26	Somewhat poorly drained	Farmland of statewide importance	3	0.55
F 2	F 2	MsB	Morris very stony silt loam, 0 to 8 percent slopes	Morris	80	0.39	Somewhat poorly drained	Not prime farmland	3	0.32
F 2	F 2	WeB	Wellsboro channery loam, 3 to 8 percent slopes	Wellsboro	80	2.03	Moderately well drained	All areas are prime farmland	3	0.32

Field	Label	Musym	Muname	Comp	%	Acres	Drainage Class	Farmland Class	Tfact	Kfact
F 2	F 2	WeC	Wellsboro channery loam, 8 to 15 percent slopes	Wellsboro	85	1.79	Moderately well drained	Farmland of statewide importance	3	0.32
F 3	F 3	MoA	Morris gravelly silt loam, 0 to 3 percent slopes	Morris	70	0.07	Somewhat poorly drained	Farmland of statewide importance	3	0.55
F 3	F 3	MoB	Morris gravelly silt loam, 3 to 8 percent slopes	Morris	77	3.77	Somewhat poorly drained	Farmland of statewide importance	3	0.55
F 3	F 3	MoC	Morris gravelly silt loam, 8 to 15 percent slopes	Morris	80	< 0.01	Somewhat poorly drained	Farmland of statewide importance	3	0.55
F 3	F 3	MsB	Morris very stony silt loam, 0 to 8 percent slopes	Morris	80	< 0.01	Somewhat poorly drained	Not prime farmland	3	0.32
F 3	F 3	OgB	Oquaga channery loam, 3 to 12 percent slopes	Oquaga	100	0.22	Well drained	Farmland of statewide importance	3	0.64
F 3	F 3	WeB	Wellsboro channery loam, 3 to 8 percent slopes	Wellsboro	80	0.85	Moderately well drained	All areas are prime farmland	3	0.32

### Soil Acreages For Farm

Musym	Muname	Comp	%	Acres	Drainage Class	Farmland Class	Tfact	Kfact
MoA	Morris gravelly silt loam, 0 to 3 percent slopes	Morris	70	2.75	Somewhat poorly drained	Farmland of statewide importance	3	0.55
MoB	Morris gravelly silt loam, 3 to 8 percent slopes	Morris	77	3.84	Somewhat poorly drained	Farmland of statewide importance	3	0.55
MsB	Morris very stony silt loam, 0 to 8 percent slopes	Morris	80	1.24	Somewhat poorly drained	Not prime farmland	3	0.32
OgB	Oquaga channery loam, 3 to 12 percent slopes	Oquaga	100	22.13	Well drained	Farmland of statewide importance	3	0.64

Musym	Muname	Comp	%	Acres	Drainage Class	Farmland Class	Tfact	Kfact
OgC	Oquaga channery loam, 12 to 20 percent slopes	Oquaga	100	10.7	Well drained	Farmland of statewide importance	3	0.64
OgD	Oquaga channery loam, 20 to 30 percent slopes	Oquaga	100	2.89	Well drained	Not prime farmland	3	0.64
WeA	Wellsboro channery loam, 0 to 3 percent slopes	Wellsboro	85	3.04	Moderately well drained	All areas are prime farmland	3	0.32
WeB	Wellsboro channery loam, 3 to 8 percent slopes	Wellsboro	80	10	Moderately well drained	All areas are prime farmland	3	0.32
MoC	Morris gravelly silt loam, 8 to 15 percent slopes	Morris	80	2.26	Somewhat poorly drained	Farmland of statewide importance	3	0.55
WeC	Wellsboro channery loam, 8 to 15 percent slopes	Wellsboro	85	1.79	Moderately well drained	Farmland of statewide importance	3	0.32