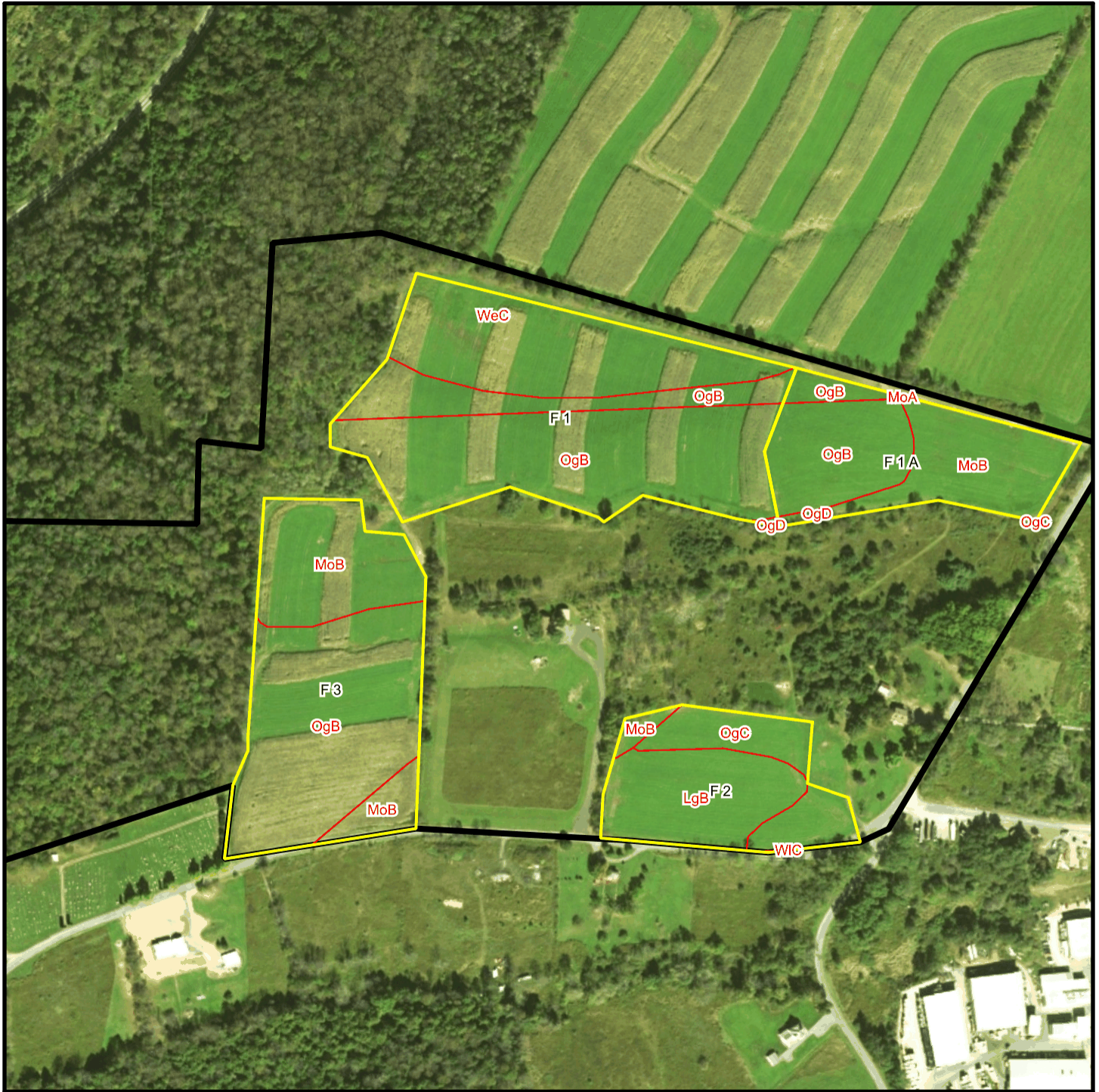
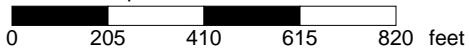


Bishcroft T 6690 Soil Map



* 410.0 feet per inch



Soil Acreages By Field

Field	Label	Musym	Muname	Comp	%	Acres	Drainage Class	Farmland Class	Tfact	Kfact
F 1	F 1	OgB	Oquaga channery loam, 3 to 8 percent slopes	Oquaga	85	9.23	Well drained	Farmland of statewide importance	3	0.37
F 1	F 1	OgD	Oquaga channery loam, 15 to 25 percent slopes	Oquaga	90	0.02	Well drained	Not prime farmland	3	0.37
F 1	F 1	WeC	Wellsboro channery loam, 8 to 15 percent slopes	Wellsboro	85	4.99	Moderately well drained	Farmland of statewide importance	3	0.32
F 1 A	F 1 A	MoB	Morris channery silt loam, 3 to 8 percent slopes	Morris	80	2.82	Somewhat poorly drained	Farmland of statewide importance	3	0.55
F 1 A	F 1 A	OgB	Oquaga channery loam, 3 to 8 percent slopes	Oquaga	85	2.95	Well drained	Farmland of statewide importance	3	0.37
F 1 A	F 1 A	OgC	Oquaga channery loam, 8 to 15 percent slopes	Oquaga	85	< 0.01	Well drained	Farmland of statewide importance	3	0.37
F 1 A	F 1 A	OgD	Oquaga channery loam, 15 to 25 percent slopes	Oquaga	90	0.1	Well drained	Not prime farmland	3	0.37
F 1 A	F 1 A	MoA	Morris gravelly silt loam, 0 to 3 percent slopes	Morris	70	< 0.01	Somewhat poorly drained	Farmland of statewide importance	3	0.55
F 2	F 2	LgB	Laidig very stony loam, 0 to 8 percent slopes	Laidig	100	3.04	Well drained	Not prime farmland	4	0.32
F 2	F 2	MoB	Morris channery silt loam, 3 to 8 percent slopes	Morris	80	0.23	Somewhat poorly drained	Farmland of statewide importance	3	0.55
F 2	F 2	OgC	Oquaga channery loam, 8 to 15 percent slopes	Oquaga	85	2.07	Well drained	Farmland of statewide importance	3	0.37
F 2	F 2	WIC	Wellsboro channery silt loam, 8 to 15 percent slopes	Wellsboro	90	0.01	Moderately well drained	Farmland of statewide importance	3	0.32

Field	Label	Musym	Muname	Comp	%	Acres	Drainage Class	Farmland Class	Tfact	Kfact
F 3	F 3	MoB	Morris channery silt loam, 3 to 8 percent slopes	Morris	80	3.78	Somewhat poorly drained	Farmland of statewide importance	3	0.55
F 3	F 3	OgB	Oquaga channery loam, 3 to 8 percent slopes	Oquaga	85	6.63	Well drained	Farmland of statewide importance	3	0.37

Soil Acreages For Farm

Musym	Muname	Comp	%	Acres	Drainage Class	Farmland Class	Tfact	Kfact
OgB	Oquaga channery loam, 3 to 8 percent slopes	Oquaga	85	18.81	Well drained	Farmland of statewide importance	3	0.37
OgD	Oquaga channery loam, 15 to 25 percent slopes	Oquaga	90	0.12	Well drained	Not prime farmland	3	0.37
WeC	Wellsboro channery loam, 8 to 15 percent slopes	Wellsboro	85	4.99	Moderately well drained	Farmland of statewide importance	3	0.32
MoB	Morris channery silt loam, 3 to 8 percent slopes	Morris	80	6.83	Somewhat poorly drained	Farmland of statewide importance	3	0.55
OgC	Oquaga channery loam, 8 to 15 percent slopes	Oquaga	85	2.07	Well drained	Farmland of statewide importance	3	0.37
MoA	Morris gravelly silt loam, 0 to 3 percent slopes	Morris	70	0	Somewhat poorly drained	Farmland of statewide importance	3	0.55
LgB	Laidig very stony loam, 0 to 8 percent slopes	Laidig	100	3.04	Well drained	Not prime farmland	4	0.32
WIC	Wellsboro channery silt loam, 8 to 15 percent slopes	Wellsboro	90	0.01	Moderately well drained	Farmland of statewide importance	3	0.32