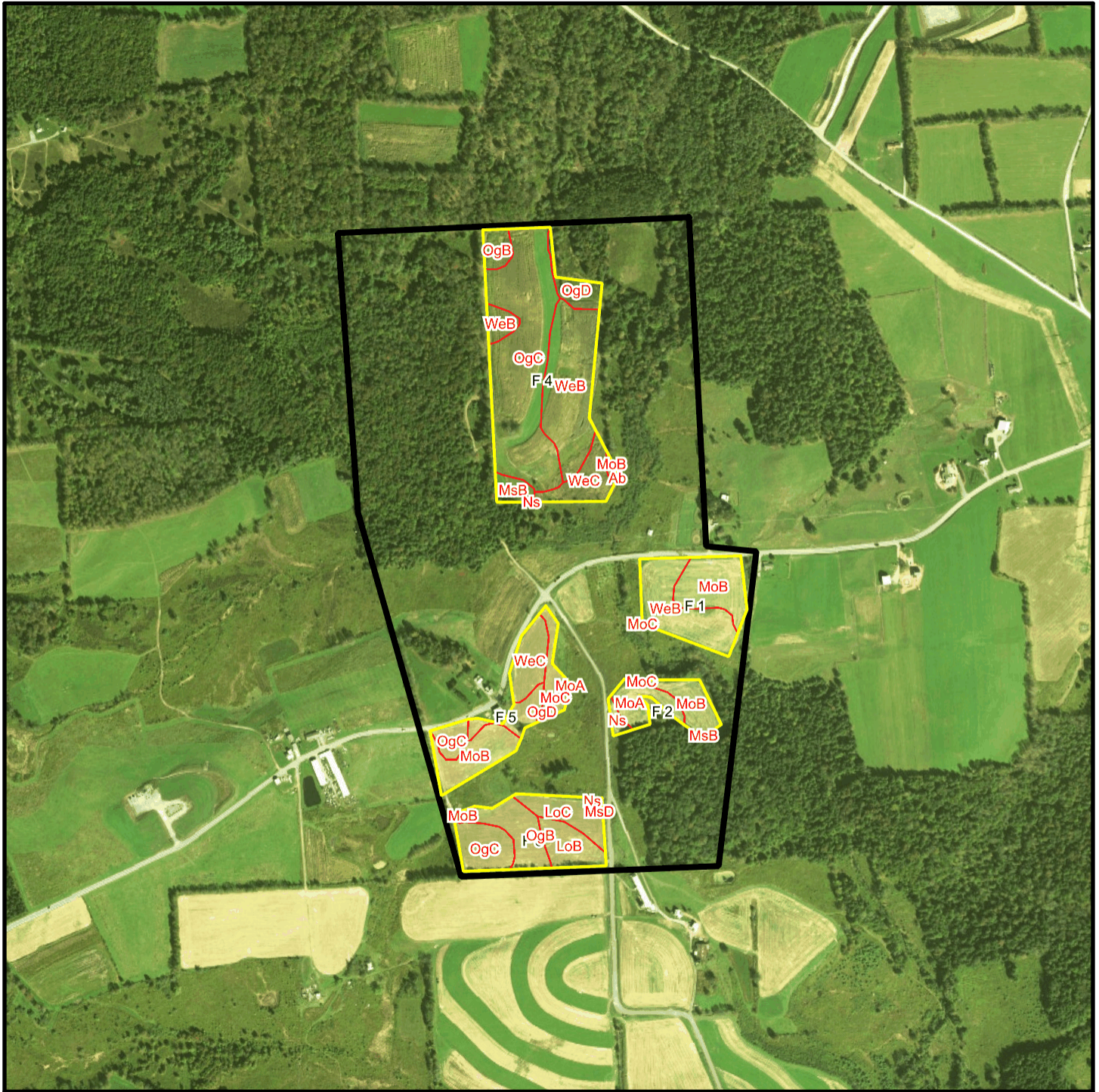
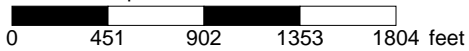


Bishcroft T 7311 Soil Map



* 902.0 feet per inch



Soil Acreages By Field

Field	Label	Musym	Muname	Comp	%	Acres	Drainage Class	Farmland Class	Tfact	Kfact
F 1	F 1	MoB	Morris gravelly silt loam, 3 to 8 percent slopes	Morris	77	3.17	Somewhat poorly drained	Farmland of statewide importance	3	0.55
F 1	F 1	MoC	Morris gravelly silt loam, 8 to 15 percent slopes	Morris	80	< 0.01	Somewhat poorly drained	Farmland of statewide importance	3	0.55
F 1	F 1	WeB	Wellsboro channery loam, 3 to 8 percent slopes	Wellsboro	80	4.33	Moderately well drained	All areas are prime farmland	3	0.32
F 2	F 2	MoA	Morris gravelly silt loam, 0 to 3 percent slopes	Morris	70	1.71	Somewhat poorly drained	Farmland of statewide importance	3	0.55
F 2	F 2	MoB	Morris gravelly silt loam, 3 to 8 percent slopes	Morris	77	1.71	Somewhat poorly drained	Farmland of statewide importance	3	0.55
F 2	F 2	MoC	Morris gravelly silt loam, 8 to 15 percent slopes	Morris	80	0.04	Somewhat poorly drained	Farmland of statewide importance	3	0.55
F 2	F 2	MsB	Morris very stony silt loam, 0 to 8 percent slopes	Morris	80	0.01	Somewhat poorly drained	Not prime farmland	3	0.32
F 2	F 2	Ns	Norwich very stony silt loam	Norwich	97	0.35	Very poorly drained	Not prime farmland	3	0.37
F 3	F 3	LoB	Lordstown channery loam, 3 to 12 percent slopes	Lordstown	100	1.98	Well drained	Farmland of statewide importance	3	0.43
F 3	F 3	LoC	Lordstown channery loam, 12 to 20 percent slopes	Lordstown	100	2.04	Well drained	Farmland of statewide importance	3	0.43
F 3	F 3	MoB	Morris gravelly silt loam, 3 to 8 percent slopes	Morris	77	0.15	Somewhat poorly drained	Farmland of statewide importance	3	0.55
F 3	F 3	MsD	Morris very stony silt loam, 8 to 25 percent slopes	Morris	80	0.05	Somewhat poorly drained	Not prime farmland	3	0.43

Field	Label	Musym	Muname	Comp	%	Acres	Drainage Class	Farmland Class	Tfact	Kfact
F 3	F 3	Ns	Norwich very stony silt loam	Norwich	97	0.06	Very poorly drained	Not prime farmland	3	0.37
F 3	F 3	OgB	Oquaga channery loam, 3 to 12 percent slopes	Oquaga	100	2.49	Well drained	Farmland of statewide importance	3	0.64
F 3	F 3	OgC	Oquaga channery loam, 12 to 20 percent slopes	Oquaga	100	2.14	Well drained	Farmland of statewide importance	3	0.64
F 4	F 4	Ab	Alluvial land	Fluvents	60	< 0.01	Moderately well drained	Not prime farmland	3	0.32
F 4	F 4	MoB	Morris gravelly silt loam, 3 to 8 percent slopes	Morris	77	0.19	Somewhat poorly drained	Farmland of statewide importance	3	0.55
F 4	F 4	MsB	Morris very stony silt loam, 0 to 8 percent slopes	Morris	80	0.79	Somewhat poorly drained	Not prime farmland	3	0.32
F 4	F 4	Ns	Norwich very stony silt loam	Norwich	97	< 0.01	Very poorly drained	Not prime farmland	3	0.37
F 4	F 4	OgB	Oquaga channery loam, 3 to 12 percent slopes	Oquaga	100	0.91	Well drained	Farmland of statewide importance	3	0.64
F 4	F 4	OgC	Oquaga channery loam, 12 to 20 percent slopes	Oquaga	100	12.11	Well drained	Farmland of statewide importance	3	0.64
F 4	F 4	OgD	Oquaga channery loam, 20 to 30 percent slopes	Oquaga	100	1.17	Well drained	Not prime farmland	3	0.64
F 4	F 4	WeB	Wellsboro channery loam, 3 to 8 percent slopes	Wellsboro	80	7.35	Moderately well drained	All areas are prime farmland	3	0.32
F 4	F 4	WeC	Wellsboro channery loam, 8 to 15 percent slopes	Wellsboro	85	2.01	Moderately well drained	Farmland of statewide importance	3	0.32
F 5	F 5	MoA	Morris gravelly silt loam, 0 to 3 percent slopes	Morris	70	0.01	Somewhat poorly drained	Farmland of statewide importance	3	0.55

Field	Label	Musym	Muname	Comp	%	Acres	Drainage Class	Farmland Class	Tfact	Kfact
F 5	F 5	MoB	Morris gravelly silt loam, 3 to 8 percent slopes	Morris	77	2.56	Somewhat poorly drained	Farmland of statewide importance	3	0.55
F 5	F 5	MoC	Morris gravelly silt loam, 8 to 15 percent slopes	Morris	80	1.41	Somewhat poorly drained	Farmland of statewide importance	3	0.55
F 5	F 5	OgC	Oquaga channery loam, 12 to 20 percent slopes	Oquaga	100	0.87	Well drained	Farmland of statewide importance	3	0.64
F 5	F 5	OgD	Oquaga channery loam, 20 to 30 percent slopes	Oquaga	100	1.24	Well drained	Not prime farmland	3	0.64
F 5	F 5	WeC	Wellsboro channery loam, 8 to 15 percent slopes	Wellsboro	85	1.95	Moderately well drained	Farmland of statewide importance	3	0.32

Soil Acreages For Farm

Musym	Muname	Comp	%	Acres	Drainage Class	Farmland Class	Tfact	Kfact
MoB	Morris gravelly silt loam, 3 to 8 percent slopes	Morris	77	7.78	Somewhat poorly drained	Farmland of statewide importance	3	0.55
MoC	Morris gravelly silt loam, 8 to 15 percent slopes	Morris	80	1.45	Somewhat poorly drained	Farmland of statewide importance	3	0.55
WeB	Wellsboro channery loam, 3 to 8 percent slopes	Wellsboro	80	11.68	Moderately well drained	All areas are prime farmland	3	0.32
MoA	Morris gravelly silt loam, 0 to 3 percent slopes	Morris	70	1.72	Somewhat poorly drained	Farmland of statewide importance	3	0.55
MsB	Morris very stony silt loam, 0 to 8 percent slopes	Morris	80	0.8	Somewhat poorly drained	Not prime farmland	3	0.32
Ns	Norwich very stony silt loam	Norwich	97	0.41	Very poorly drained	Not prime farmland	3	0.37

Musym	Muname	Comp	%	Acres	Drainage Class	Farmland Class	Tfact	Kfact
LoB	Lordstown channery loam, 3 to 12 percent slopes	Lordstown	100	1.98	Well drained	Farmland of statewide importance	3	0.43
LoC	Lordstown channery loam, 12 to 20 percent slopes	Lordstown	100	2.04	Well drained	Farmland of statewide importance	3	0.43
MsD	Morris very stony silt loam, 8 to 25 percent slopes	Morris	80	0.05	Somewhat poorly drained	Not prime farmland	3	0.43
OgB	Oquaga channery loam, 3 to 12 percent slopes	Oquaga	100	3.4	Well drained	Farmland of statewide importance	3	0.64
OgC	Oquaga channery loam, 12 to 20 percent slopes	Oquaga	100	15.12	Well drained	Farmland of statewide importance	3	0.64
Ab	Alluvial land	Fluvents	60	0	Moderately well drained	Not prime farmland	3	0.32
OgD	Oquaga channery loam, 20 to 30 percent slopes	Oquaga	100	2.41	Well drained	Not prime farmland	3	0.64
WeC	Wellsboro channery loam, 8 to 15 percent slopes	Wellsboro	85	3.96	Moderately well drained	Farmland of statewide importance	3	0.32