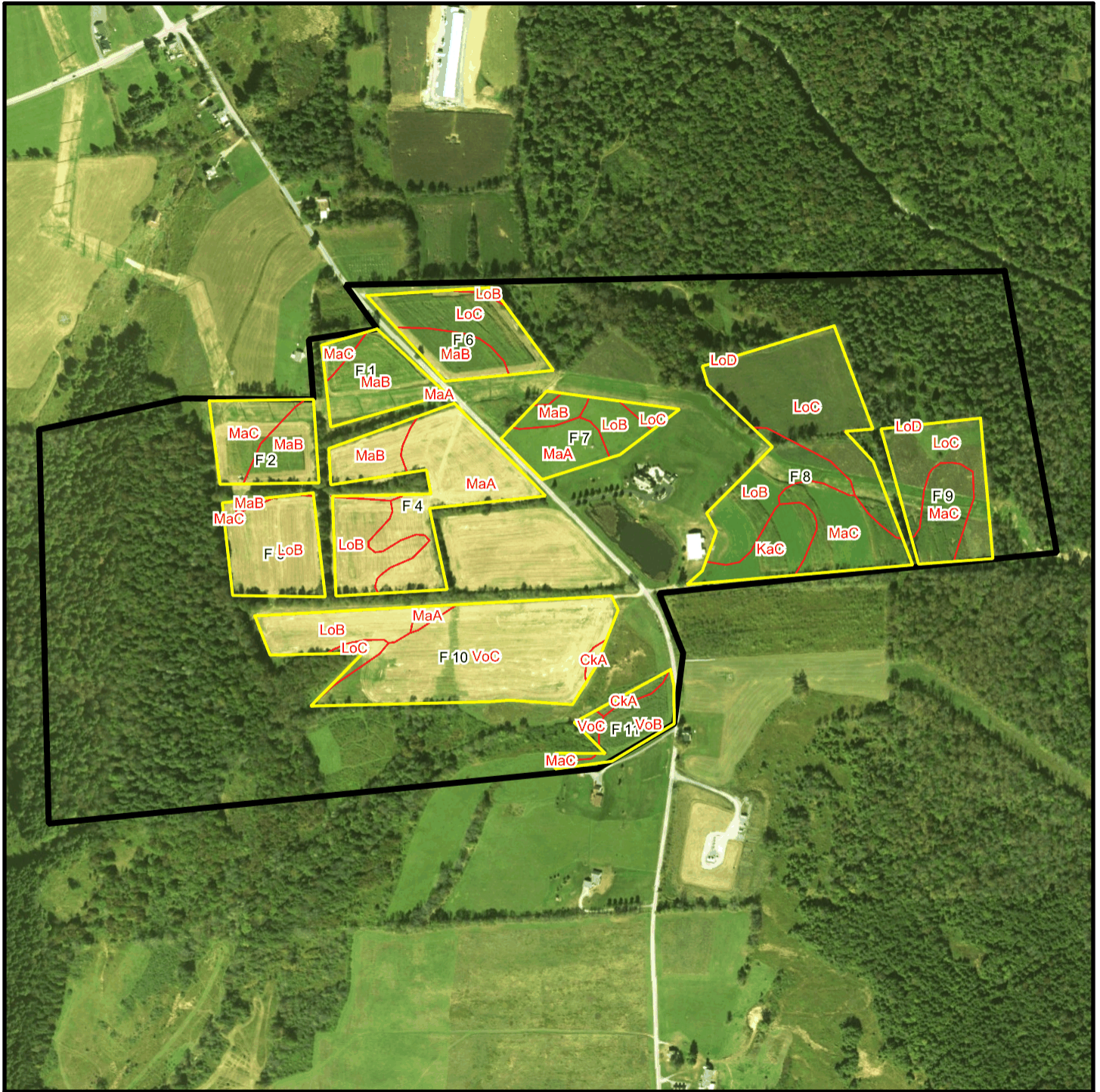


Bishcroft T 7324 Soil Map



* 694.0 feet per inch



Soil Acreages By Field

Field	Label	Musym	Muname	Comp	%	Acres	Drainage Class	Farmland Class	Tfact	Kfact
F 1	F 1	MaA	Mardin channery silt loam, 0 to 3 percent slopes	Mardin	85	0.03	Moderately well drained	All areas are prime farmland	3	0.32
F 1	F 1	MaB	Mardin channery silt loam, 3 to 8 percent slopes	Mardin	90	3.29	Moderately well drained	All areas are prime farmland	3	0.32
F 1	F 1	MaC	Mardin channery silt loam, 8 to 15 percent slopes	Mardin	90	0.49	Moderately well drained	Farmland of statewide importance	3	0.32
F 10	F 10	CkA	Chippewa silt loam, 0 to 3 percent slopes	Chippewa	95	0.18	Poorly drained	Not prime farmland	3	0.32
F 10	F 10	LoB	Lordstown channery loam, 3 to 12 percent slopes	Lordstown	100	2.83	Well drained	Farmland of statewide importance	3	0.43
F 10	F 10	LoC	Lordstown channery loam, 12 to 20 percent slopes	Lordstown	100	0.49	Well drained	Farmland of statewide importance	3	0.43
F 10	F 10	MaA	Mardin channery silt loam, 0 to 3 percent slopes	Mardin	85	0.31	Moderately well drained	All areas are prime farmland	3	0.32
F 10	F 10	VoC	Volusia channery silt loam, 8 to 15 percent slopes	Volusia	90	11.48	Somewhat poorly drained	Farmland of statewide importance	3	0.37
F 11	F 11	CkA	Chippewa silt loam, 0 to 3 percent slopes	Chippewa	95	0.36	Poorly drained	Not prime farmland	3	0.32
F 11	F 11	MaC	Mardin channery silt loam, 8 to 15 percent slopes	Mardin	90	0.09	Moderately well drained	Farmland of statewide importance	3	0.32
F 11	F 11	VoB	Volusia channery silt loam, 3 to 8 percent slopes	Volusia	90	1.98	Somewhat poorly drained	Farmland of statewide importance	3	0.37
F 11	F 11	VoC	Volusia channery silt loam, 8 to 15 percent slopes	Volusia	90	0.35	Somewhat poorly drained	Farmland of statewide importance	3	0.37

Field	Label	Musym	Muname	Comp	%	Acres	Drainage Class	Farmland Class	Tfact	Kfact
F 2	F 2	MaB	Mardin channery silt loam, 3 to 8 percent slopes	Mardin	90	2.14	Moderately well drained	All areas are prime farmland	3	0.32
F 2	F 2	MaC	Mardin channery silt loam, 8 to 15 percent slopes	Mardin	90	2.31	Moderately well drained	Farmland of statewide importance	3	0.32
F 3	F 3	LoB	Lordstown channery loam, 3 to 12 percent slopes	Lordstown	100	4.47	Well drained	Farmland of statewide importance	3	0.43
F 3	F 3	MaB	Mardin channery silt loam, 3 to 8 percent slopes	Mardin	90	0.16	Moderately well drained	All areas are prime farmland	3	0.32
F 3	F 3	MaC	Mardin channery silt loam, 8 to 15 percent slopes	Mardin	90	0.12	Moderately well drained	Farmland of statewide importance	3	0.32
F 4	F 4	LoB	Lordstown channery loam, 3 to 12 percent slopes	Lordstown	100	2.82	Well drained	Farmland of statewide importance	3	0.43
F 4	F 4	MaA	Mardin channery silt loam, 0 to 3 percent slopes	Mardin	85	6.76	Moderately well drained	All areas are prime farmland	3	0.32
F 4	F 4	MaB	Mardin channery silt loam, 3 to 8 percent slopes	Mardin	90	1.91	Moderately well drained	All areas are prime farmland	3	0.32
F 6	F 6	LoB	Lordstown channery loam, 3 to 12 percent slopes	Lordstown	100	0.14	Well drained	Farmland of statewide importance	3	0.43
F 6	F 6	LoC	Lordstown channery loam, 12 to 20 percent slopes	Lordstown	100	3.52	Well drained	Farmland of statewide importance	3	0.43
F 6	F 6	MaB	Mardin channery silt loam, 3 to 8 percent slopes	Mardin	90	1.87	Moderately well drained	All areas are prime farmland	3	0.32
F 7	F 7	LoB	Lordstown channery loam, 3 to 12 percent slopes	Lordstown	100	1.2	Well drained	Farmland of statewide importance	3	0.43
F 7	F 7	LoC	Lordstown channery loam, 12 to 20 percent slopes	Lordstown	100	0.51	Well drained	Farmland of statewide importance	3	0.43

Field	Label	Musym	Muname	Comp	%	Acres	Drainage Class	Farmland Class	Tfact	Kfact
F 7	F 7	MaA	Mardin channery silt loam, 0 to 3 percent slopes	Mardin	85	2.14	Moderately well drained	All areas are prime farmland	3	0.32
F 7	F 7	MaB	Mardin channery silt loam, 3 to 8 percent slopes	Mardin	90	0.8	Moderately well drained	All areas are prime farmland	3	0.32
F 8	F 8	KaC	Kanona silt loam, 8 to 15 percent slopes	Kanona	20	4.84	Somewhat poorly drained	Not prime farmland	3	0.32
F 8	F 8	LoB	Lordstown channery loam, 3 to 12 percent slopes	Lordstown	100	3.94	Well drained	Farmland of statewide importance	3	0.43
F 8	F 8	LoC	Lordstown channery loam, 12 to 20 percent slopes	Lordstown	100	8.16	Well drained	Farmland of statewide importance	3	0.43
F 8	F 8	LoD	Lordstown channery loam, 20 to 30 percent slopes	Lordstown	100	< 0.01	Well drained	Not prime farmland	3	0.43
F 8	F 8	MaC	Mardin channery silt loam, 8 to 15 percent slopes	Mardin	90	3.53	Moderately well drained	Farmland of statewide importance	3	0.32
F 9	F 9	LoC	Lordstown channery loam, 12 to 20 percent slopes	Lordstown	100	4.05	Well drained	Farmland of statewide importance	3	0.43
F 9	F 9	LoD	Lordstown channery loam, 20 to 30 percent slopes	Lordstown	100	< 0.01	Well drained	Not prime farmland	3	0.43
F 9	F 9	MaC	Mardin channery silt loam, 8 to 15 percent slopes	Mardin	90	2.34	Moderately well drained	Farmland of statewide importance	3	0.32

Soil Acreages For Farm

Musym	Muname	Comp	%	Acres	Drainage Class	Farmland Class	Tfact	Kfact
MaA	Mardin channery silt loam, 0 to 3 percent slopes	Mardin	85	9.24	Moderately well drained	All areas are prime farmland	3	0.32

Musym	Muname	Comp	%	Acres	Drainage Class	Farmland Class	Tfact	Kfact
MaB	Mardin channery silt loam, 3 to 8 percent slopes	Mardin	90	10.17	Moderately well drained	All areas are prime farmland	3	0.32
MaC	Mardin channery silt loam, 8 to 15 percent slopes	Mardin	90	8.88	Moderately well drained	Farmland of statewide importance	3	0.32
LoB	Lordstown channery loam, 3 to 12 percent slopes	Lordstown	100	15.4	Well drained	Farmland of statewide importance	3	0.43
LoC	Lordstown channery loam, 12 to 20 percent slopes	Lordstown	100	16.73	Well drained	Farmland of statewide importance	3	0.43
KaC	Kanona silt loam, 8 to 15 percent slopes	Kanona	20	4.84	Somewhat poorly drained	Not prime farmland	3	0.32
LoD	Lordstown channery loam, 20 to 30 percent slopes	Lordstown	100	0	Well drained	Not prime farmland	3	0.43
CkA	Chippewa silt loam, 0 to 3 percent slopes	Chippewa	95	0.54	Poorly drained	Not prime farmland	3	0.32
VoC	Volusia channery silt loam, 8 to 15 percent slopes	Volusia	90	11.83	Somewhat poorly drained	Farmland of statewide importance	3	0.37
VoB	Volusia channery silt loam, 3 to 8 percent slopes	Volusia	90	1.98	Somewhat poorly drained	Farmland of statewide importance	3	0.37