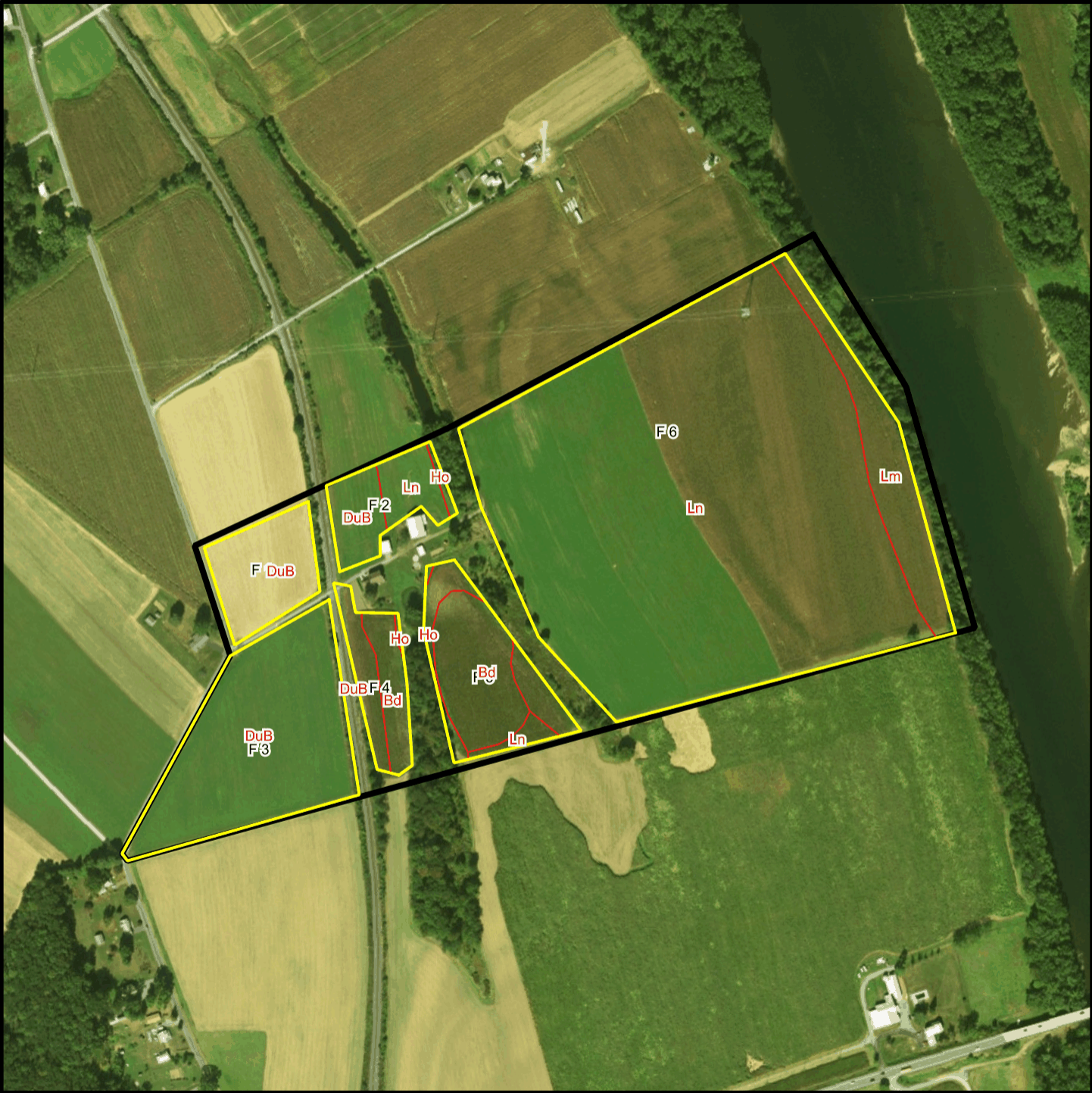


Bosch T 2727 Soil Map



* 538.0 feet per inch
0 269 538 807 1076 feet



Soil Acreages By Field

Field	Label	Musym	Muname	Comp	%	Acres	Drainage Class	Farmland Class	Tfact	Kfact
F 1	F 1	DuB	Duncannon loam, 3 to 8 percent slopes	Duncannon	100	3.11	Well drained	All areas are prime farmland	4	0.37
F 2	F 2	DuB	Duncannon loam, 3 to 8 percent slopes	Duncannon	100	1.41	Well drained	All areas are prime farmland	4	0.37
F 2	F 2	Ho	Holly silt loam	Holly	100	0.15	Very poorly drained	Not prime farmland	5	0.28
F 2	F 2	Ln	Linden loam, occasionally flooded	Linden	97	1.23	Well drained	All areas are prime farmland	4	0.37
F 3	F 3	DuB	Duncannon loam, 3 to 8 percent slopes	Duncannon	100	9.96	Well drained	All areas are prime farmland	4	0.37
F 4	F 4	Bd	Basher silt loam, occasionally flooded	Basher	90	1.33	Moderately well drained	All areas are prime farmland	5	0.32
F 4	F 4	DuB	Duncannon loam, 3 to 8 percent slopes	Duncannon	100	1.13	Well drained	All areas are prime farmland	4	0.37
F 4	F 4	Ho	Holly silt loam	Holly	100	0.05	Very poorly drained	Not prime farmland	5	0.28
F 5	F 5	Bd	Basher silt loam, occasionally flooded	Basher	90	3.33	Moderately well drained	All areas are prime farmland	5	0.32
F 5	F 5	Ho	Holly silt loam	Holly	100	1.57	Very poorly drained	Not prime farmland	5	0.28
F 5	F 5	Ln	Linden loam, occasionally flooded	Linden	97	0.4	Well drained	All areas are prime farmland	4	0.37
F 6	F 6	Lm	Linden loam	Linden	90	3.78	Well drained	All areas are prime farmland	4	0.37
F 6	F 6	Ln	Linden loam, occasionally flooded	Linden	97	42.09	Well drained	All areas are prime farmland	4	0.37

Soil Acreages For Farm

Musym	Muname	Comp	%	Acres	Drainage Class	Farmland Class	Tfact	Kfact
DuB	Duncannon loam, 3 to 8 percent slopes	Duncannon	100	15.61	Well drained	All areas are prime farmland	4	0.37
Ho	Holly silt loam	Holly	100	1.77	Very poorly drained	Not prime farmland	5	0.28
Ln	Linden loam, occasionally flooded	Linden	97	43.72	Well drained	All areas are prime farmland	4	0.37
Bd	Basher silt loam, occasionally flooded	Basher	90	4.66	Moderately well drained	All areas are prime farmland	5	0.32
Lm	Linden loam	Linden	90	3.78	Well drained	All areas are prime farmland	4	0.37