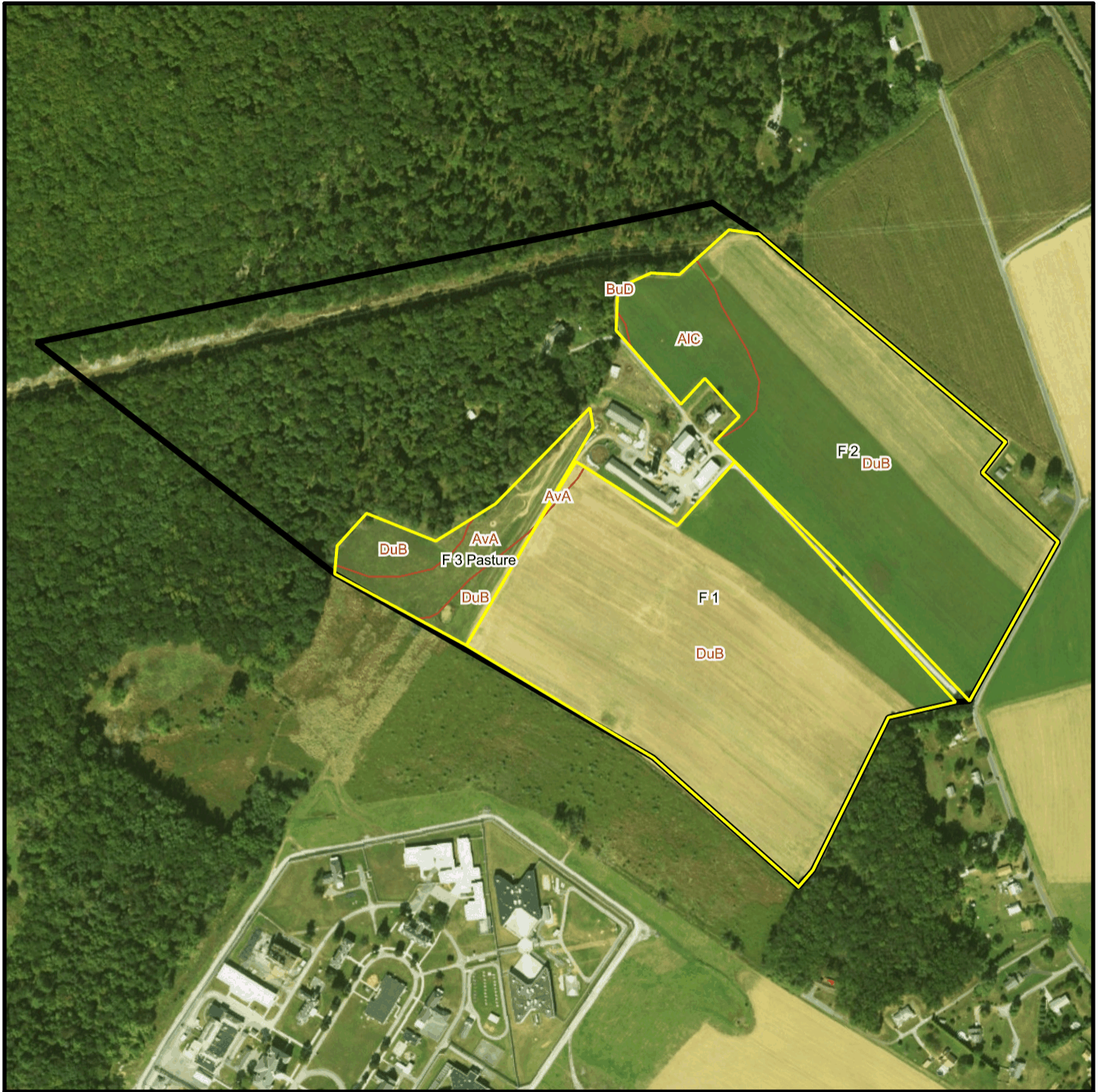
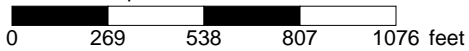


Bosch T 574 Soil Map



* 538.0 feet per inch



Soil Acreages By Field

Field	Label	Musym	Muname	Comp	%	Acres	Drainage Class	Farmland Class	Tfact	Kfact
F 1	F 1	AvA	Alvira silt loam, 0 to 3 percent slopes	Alvira	80	0.13	Somewhat poorly drained	Farmland of statewide importance	3	0.32
F 1	F 1	DuB	Duncannon loam, 3 to 8 percent slopes	Duncannon	100	32.42	Well drained	All areas are prime farmland	4	0.37
F 2	F 2	AIC	Allenwood gravelly silt loam, 8 to 15 percent slopes	Allenwood	100	4.1	Well drained	Farmland of statewide importance	4	0.32
F 2	F 2	BuD	Buchanan very stony loam, 8 to 25 percent slopes	Buchanan	90	0.01	Moderately well drained	Not prime farmland	3	0.32
F 2	F 2	DuB	Duncannon loam, 3 to 8 percent slopes	Duncannon	100	23.65	Well drained	All areas are prime farmland	4	0.37
F 3 Pasture	F 3 Pasture	AvA	Alvira silt loam, 0 to 3 percent slopes	Alvira	80	3.35	Somewhat poorly drained	Farmland of statewide importance	3	0.32
F 3 Pasture	F 3 Pasture	DuB	Duncannon loam, 3 to 8 percent slopes	Duncannon	100	2.71	Well drained	All areas are prime farmland	4	0.37

Soil Acreages For Farm

Musym	Muname	Comp	%	Acres	Drainage Class	Farmland Class	Tfact	Kfact
AvA	Alvira silt loam, 0 to 3 percent slopes	Alvira	80	3.48	Somewhat poorly drained	Farmland of statewide importance	3	0.32
DuB	Duncannon loam, 3 to 8 percent slopes	Duncannon	100	58.78	Well drained	All areas are prime farmland	4	0.37
AIC	Allenwood gravelly silt loam, 8 to 15 percent slopes	Allenwood	100	4.1	Well drained	Farmland of statewide importance	4	0.32
BuD	Buchanan very stony loam, 8 to 25 percent slopes	Buchanan	90	0.01	Moderately well drained	Not prime farmland	3	0.32