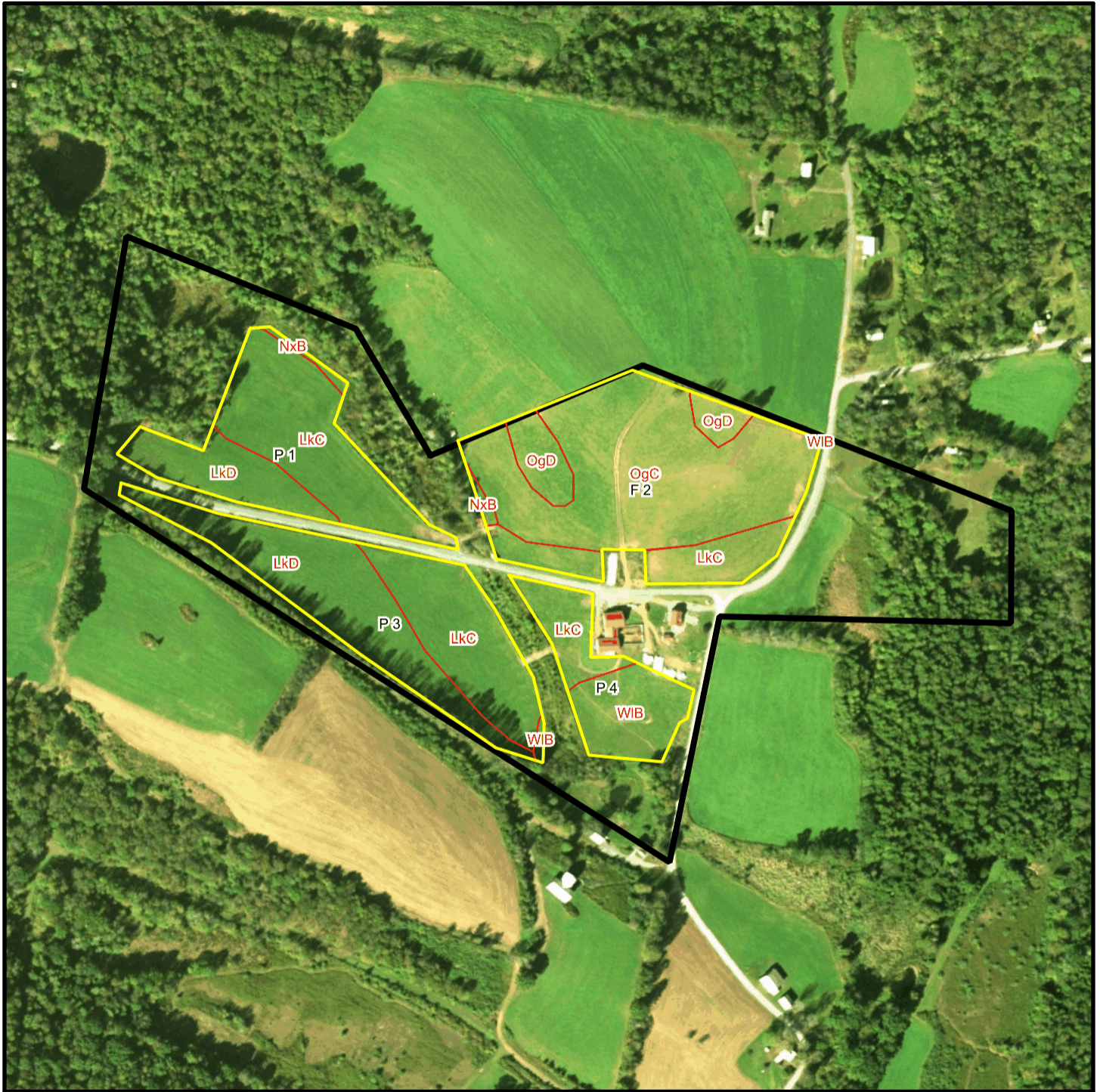


Gavitt T 1438 Soil Map



* 414.0 feet per inch



Soil Acreages By Field

Field	Label	Musym	Muname	Comp	%	Acres	Drainage Class	Farmland Class	Tfact	Kfact
F 2	F 2	LkC	Leck kill channery silt loam, 8 to 15 percent slopes	Leck Kill	90	1.64	Well drained	Farmland of statewide importance	4	0.32
F 2	F 2	NxB	Norwich very stony silt loam, 0 to 8 percent slopes	Norwich	100	0.1	Poorly drained	Not prime farmland	3	0.43
F 2	F 2	OgC	Oquaga channery loam, 8 to 15 percent slopes	Oquaga	85	7.4	Well drained	Farmland of statewide importance	3	0.37
F 2	F 2	OgD	Oquaga channery loam, 15 to 25 percent slopes	Oquaga	90	1.08	Well drained	Not prime farmland	3	0.37
F 2	F 2	WIB	Wellsboro channery silt loam, 3 to 8 percent slopes	Wellsboro	90	< 0.01	Moderately well drained	All areas are prime farmland	3	0.32
P 1	P 1	LkC	Leck kill channery silt loam, 8 to 15 percent slopes	Leck Kill	90	3.62	Well drained	Farmland of statewide importance	4	0.32
P 1	P 1	LkD	Leck kill channery silt loam, 15 to 25 percent slopes	Leck Kill	80	1.66	Well drained	Not prime farmland	4	0.32
P 1	P 1	NxB	Norwich very stony silt loam, 0 to 8 percent slopes	Norwich	100	0.12	Poorly drained	Not prime farmland	3	0.43
P 3	P 3	LkC	Leck kill channery silt loam, 8 to 15 percent slopes	Leck Kill	90	2.87	Well drained	Farmland of statewide importance	4	0.32
P 3	P 3	LkD	Leck kill channery silt loam, 15 to 25 percent slopes	Leck Kill	80	3.82	Well drained	Not prime farmland	4	0.32
P 3	P 3	WIB	Wellsboro channery silt loam, 3 to 8 percent slopes	Wellsboro	90	0.06	Moderately well drained	All areas are prime farmland	3	0.32
P 4	P 4	LkC	Leck kill channery silt loam, 8 to 15 percent slopes	Leck Kill	90	1	Well drained	Farmland of statewide importance	4	0.32
P 4	P 4	WIB	Wellsboro channery silt loam, 3 to 8 percent slopes	Wellsboro	90	1.64	Moderately well drained	All areas are prime farmland	3	0.32

Soil Acreages For Farm

Musym	Muname	Comp	%	Acres	Drainage Class	Farmland Class	Tfact	Kfact
LkC	Leck kill channery silt loam, 8 to 15 percent slopes	Leck Kill	90	9.13	Well drained	Farmland of statewide importance	4	0.32
NxB	Norwich very stony silt loam, 0 to 8 percent slopes	Norwich	100	0.22	Poorly drained	Not prime farmland	3	0.43
OgC	Oquaga channery loam, 8 to 15 percent slopes	Oquaga	85	7.4	Well drained	Farmland of statewide importance	3	0.37
OgD	Oquaga channery loam, 15 to 25 percent slopes	Oquaga	90	1.08	Well drained	Not prime farmland	3	0.37
WIB	Wellsboro channery silt loam, 3 to 8 percent slopes	Wellsboro	90	1.7	Moderately well drained	All areas are prime farmland	3	0.32
LkD	Leck kill channery silt loam, 15 to 25 percent slopes	Leck Kill	80	5.48	Well drained	Not prime farmland	4	0.32