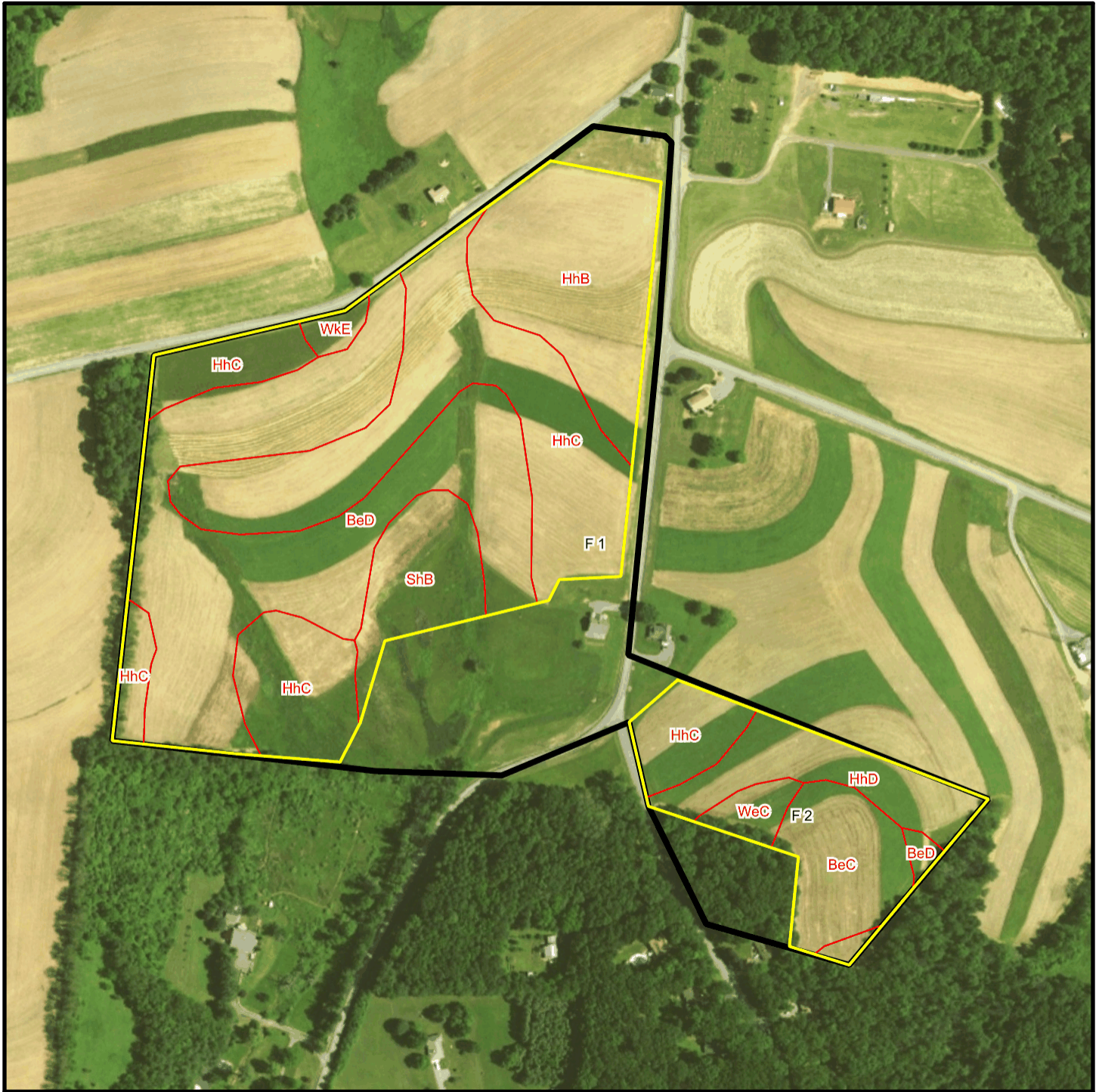
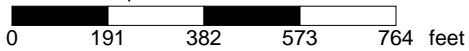


# Harvey T 1565 Soil Map



\* 382.0 feet per inch



## Soil Acreages By Field

---

Field	Label	Musym	Muname	Comp	%	Acres	Drainage Class	Farmland Class	Tfact	Kfact
F 1	F 1	BeD	Berks channery silt loam, 15 to 25 percent slopes	Berks	100	12.2	Well drained	Not prime farmland	3	0.32
F 1	F 1	HhB	Hartleton channery silt loam, 3 to 8 percent slopes	Hartleton	75	5.45	Well drained	Farmland of statewide importance	3	0.24
F 1	F 1	HhC	Hartleton channery silt loam, 8 to 15 percent slopes	Hartleton	90	12.54	Well drained	Farmland of statewide importance	3	0.24
F 1	F 1	ShB	Shelmadine silt loam, 3 to 8 percent slopes	Shelmadine	90	2.43	Poorly drained	Not prime farmland	3	0.32
F 1	F 1	WkE	Weikert and Klinesville shaly silt loams, 25 to 80 percent slopes	Weikert	55	0.22	Somewhat excessively drained	Not prime farmland	2	0.32
F 1	F 1	WkE	Weikert and Klinesville shaly silt loams, 25 to 80 percent slopes	Klinesville	35	0.14	Somewhat excessively drained	Not prime farmland	2	0.28
F 2	F 2	BeC	Berks channery silt loam, 8 to 15 percent slopes	Berks	100	2.61	Well drained	Farmland of statewide importance	3	0.32
F 2	F 2	BeD	Berks channery silt loam, 15 to 25 percent slopes	Berks	100	0.19	Well drained	Not prime farmland	3	0.32
F 2	F 2	HhC	Hartleton channery silt loam, 8 to 15 percent slopes	Hartleton	90	1.38	Well drained	Farmland of statewide importance	3	0.24
F 2	F 2	HhD	Hartleton channery silt loam, 15 to 25 percent slopes	Hartleton	90	2.54	Well drained	Not prime farmland	3	0.24
F 2	F 2	WeC	Weikert shaly silt loam, 8 to 15 percent slopes	Weikert	85	0.79	Somewhat excessively drained	Not prime farmland	2	0.32

## Soil Acreages For Farm

---

Musym	Muname	Comp	%	Acres	Drainage Class	Farmland Class	Tfact	Kfact
BeD	Berks channery silt loam, 15 to 25 percent slopes	Berks	100	12.39	Well drained	Not prime farmland	3	0.32
HhB	Hartleton channery silt loam, 3 to 8 percent slopes	Hartleton	75	5.45	Well drained	Farmland of statewide importance	3	0.24
HhC	Hartleton channery silt loam, 8 to 15 percent slopes	Hartleton	90	13.92	Well drained	Farmland of statewide importance	3	0.24
ShB	Shelmadine silt loam, 3 to 8 percent slopes	Shelmadine	90	2.43	Poorly drained	Not prime farmland	3	0.32
WkE	Weikert and Klinesville shaly silt loams, 25 to 80 percent slopes	Weikert	55	0.22	Somewhat excessively drained	Not prime farmland	2	0.32
WkE	Weikert and Klinesville shaly silt loams, 25 to 80 percent slopes	Klinesville	35	0.14	Somewhat excessively drained	Not prime farmland	2	0.28
BeC	Berks channery silt loam, 8 to 15 percent slopes	Berks	100	2.61	Well drained	Farmland of statewide importance	3	0.32
HhD	Hartleton channery silt loam, 15 to 25 percent slopes	Hartleton	90	2.54	Well drained	Not prime farmland	3	0.24
WeC	Weikert shaly silt loam, 8 to 15 percent slopes	Weikert	85	0.79	Somewhat excessively drained	Not prime farmland	2	0.32