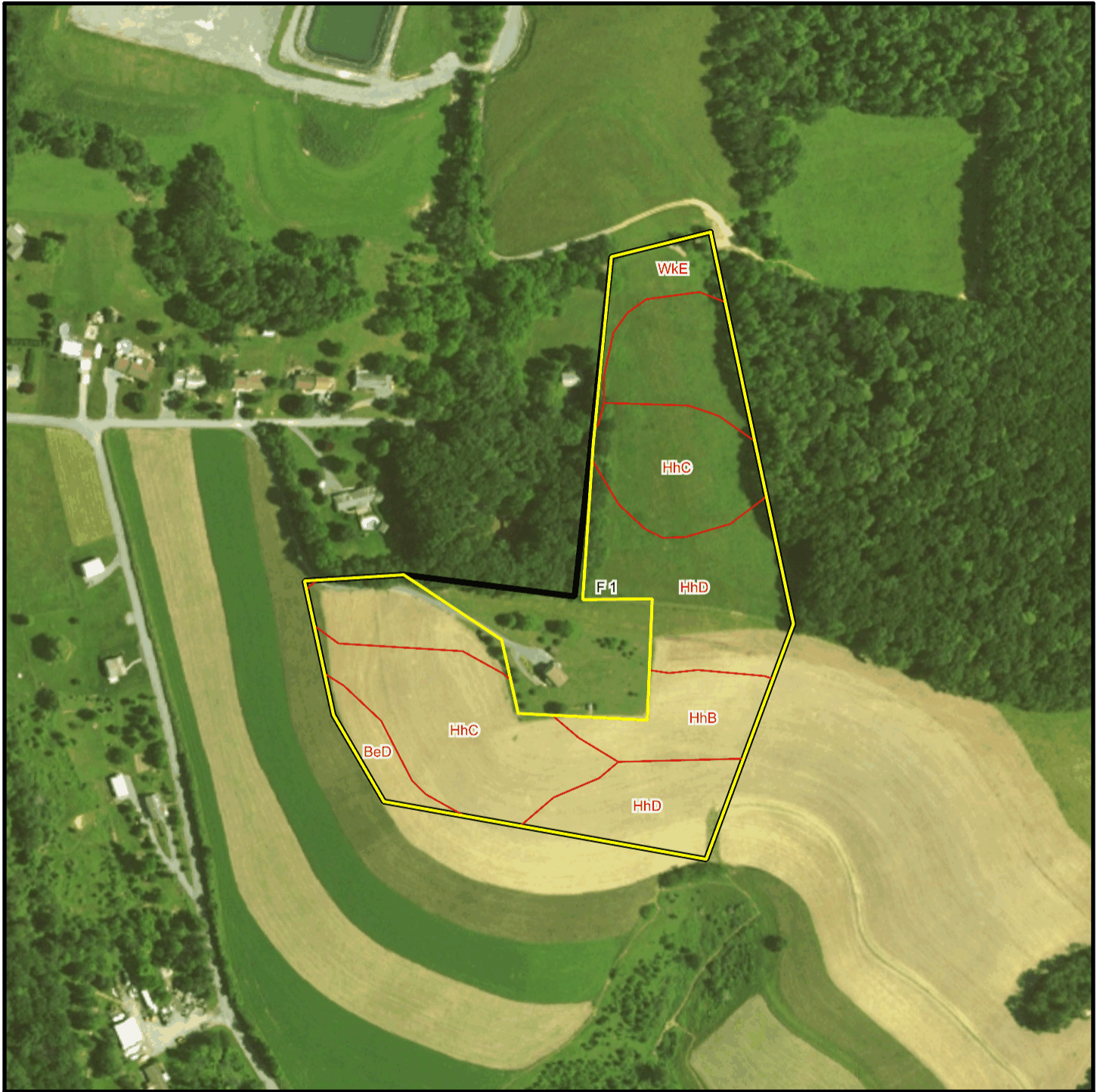
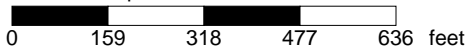


# Harvey T 3427 Soil Map



\* 318.0 feet per inch



## Soil Acreages By Field

Field	Label	Musym	Muname	Comp	%	Acres	Drainage Class	Farmland Class	Tfact	Kfact
F 1	F 1	BeD	Berks channery silt loam, 15 to 25 percent slopes	Berks	100	0.56	Well drained	Not prime farmland	3	0.32
F 1	F 1	HhB	Hartleton channery silt loam, 3 to 8 percent slopes	Hartleton	75	2.55	Well drained	Farmland of statewide importance	3	0.24
F 1	F 1	HhC	Hartleton channery silt loam, 8 to 15 percent slopes	Hartleton	90	5.09	Well drained	Farmland of statewide importance	3	0.24
F 1	F 1	HhD	Hartleton channery silt loam, 15 to 25 percent slopes	Hartleton	90	5.91	Well drained	Not prime farmland	3	0.24
F 1	F 1	WkE	Weikert and Klinesville shaly silt loams, 25 to 80 percent slopes	Weikert	55	0.47	Somewhat excessively drained	Not prime farmland	2	0.32
F 1	F 1	WkE	Weikert and Klinesville shaly silt loams, 25 to 80 percent slopes	Klinesville	35	0.3	Somewhat excessively drained	Not prime farmland	2	0.28

## Soil Acreages For Farm

Musym	Muname	Comp	%	Acres	Drainage Class	Farmland Class	Tfact	Kfact
BeD	Berks channery silt loam, 15 to 25 percent slopes	Berks	100	0.56	Well drained	Not prime farmland	3	0.32
HhB	Hartleton channery silt loam, 3 to 8 percent slopes	Hartleton	75	2.55	Well drained	Farmland of statewide importance	3	0.24
HhC	Hartleton channery silt loam, 8 to 15 percent slopes	Hartleton	90	5.09	Well drained	Farmland of statewide importance	3	0.24
HhD	Hartleton channery silt loam, 15 to 25 percent slopes	Hartleton	90	5.91	Well drained	Not prime farmland	3	0.24
WkE	Weikert and Klinesville shaly silt loams, 25 to 80 percent slopes	Weikert	55	0.47	Somewhat excessively drained	Not prime farmland	2	0.32

Musym	Muname	Comp	%	Acres	Drainage Class	Farmland Class	Tfact	Kfact
WkE	Weikert and Klinesville shaly silt loams, 25 to 80 percent slopes	Klinesville	35	0.3	Somewhat excessively drained	Not prime farmland	2	0.28