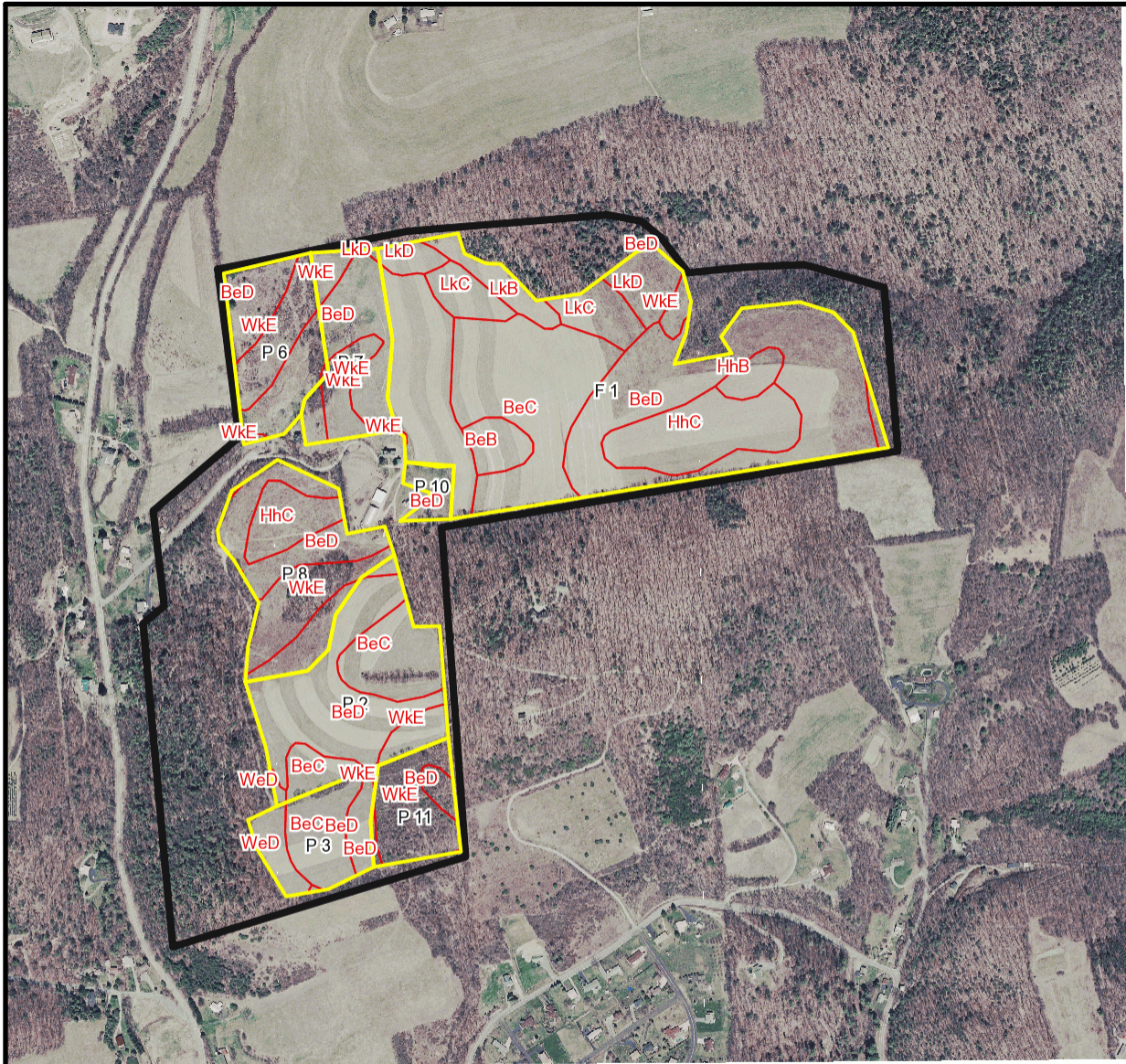
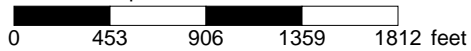


London T 1223 Soil Map



* 906.0 feet per inch



Soil Acreages By Field

Field	Label	Musym	Muname	Comp	%	Acres	Drainage Class	Farmland Class	Tfact	Kfact
F 1	F 1	BeB	Berks channery silt loam, 3 to 8 percent slopes	Berks	100	1.77	Well drained	Farmland of statewide importance	3	0.32
F 1	F 1	BeC	Berks channery silt loam, 8 to 15 percent slopes	Berks	100	12.27	Well drained	Farmland of statewide importance	3	0.32
F 1	F 1	BeD	Berks channery silt loam, 15 to 25 percent slopes	Berks	100	24.78	Well drained	Not prime farmland	3	0.32
F 1	F 1	HhB	Hartleton channery silt loam, 3 to 8 percent slopes	Hartleton	75	1.26	Well drained	Farmland of statewide importance	3	0.24
F 1	F 1	HhC	Hartleton channery silt loam, 8 to 15 percent slopes	Hartleton	90	6.81	Well drained	Farmland of statewide importance	3	0.24
F 1	F 1	LkB	Leck kill channery silt loam, 3 to 8 percent slopes	Leck Kill	85	1.94	Well drained	All areas are prime farmland	4	0.32
F 1	F 1	LkC	Leck kill channery silt loam, 8 to 15 percent slopes	Leck Kill	90	4.12	Well drained	Farmland of statewide importance	4	0.32
F 1	F 1	LkD	Leck kill channery silt loam, 15 to 25 percent slopes	Leck Kill	80	3.27	Well drained	Not prime farmland	4	0.32
F 1	F 1	WkE	Weikert and Klinesville shaly silt loams, 25 to 80 percent slopes	Weikert	55	0.61	Somewhat excessively drained	Not prime farmland	2	0.32
F 1	F 1	WkE	Weikert and Klinesville shaly silt loams, 25 to 80 percent slopes	Klinesville	35	0.38	Somewhat excessively drained	Not prime farmland	2	0.28
F 10	P 10	BeD	Berks channery silt loam, 15 to 25 percent slopes	Berks	100	1.32	Well drained	Not prime farmland	3	0.32
F 11	P 11	BeD	Berks channery silt loam, 15 to 25 percent slopes	Berks	100	0.92	Well drained	Not prime farmland	3	0.32

Field	Label	Musym	Muname	Comp	%	Acres	Drainage Class	Farmland Class	Tfact	Kfact
F 11	P 11	WkE	Weikert and Klinesville shaly silt loams, 25 to 80 percent slopes	Weikert	55	2.74	Somewhat excessively drained	Not prime farmland	2	0.32
F 11	P 11	WkE	Weikert and Klinesville shaly silt loams, 25 to 80 percent slopes	Klinesville	35	1.74	Somewhat excessively drained	Not prime farmland	2	0.28
P 2	P 2	BeC	Berks channery silt loam, 8 to 15 percent slopes	Berks	100	5.92	Well drained	Farmland of statewide importance	3	0.32
P 2	P 2	BeD	Berks channery silt loam, 15 to 25 percent slopes	Berks	100	9.18	Well drained	Not prime farmland	3	0.32
P 2	P 2	WeD	Weikert shaly silt loam, 15 to 25 percent slopes	Weikert	85	0.17	Somewhat excessively drained	Not prime farmland	2	0.32
P 2	P 2	WkE	Weikert and Klinesville shaly silt loams, 25 to 80 percent slopes	Weikert	55	0.95	Somewhat excessively drained	Not prime farmland	2	0.32
P 2	P 2	WkE	Weikert and Klinesville shaly silt loams, 25 to 80 percent slopes	Klinesville	35	0.61	Somewhat excessively drained	Not prime farmland	2	0.28
P 3	P 3	BeC	Berks channery silt loam, 8 to 15 percent slopes	Berks	100	3.65	Well drained	Farmland of statewide importance	3	0.32
P 3	P 3	BeD	Berks channery silt loam, 15 to 25 percent slopes	Berks	100	1.32	Well drained	Not prime farmland	3	0.32
P 3	P 3	WeD	Weikert shaly silt loam, 15 to 25 percent slopes	Weikert	85	1.58	Somewhat excessively drained	Not prime farmland	2	0.32
P 3	P 3	WkE	Weikert and Klinesville shaly silt loams, 25 to 80 percent slopes	Weikert	55	0.02	Somewhat excessively drained	Not prime farmland	2	0.32
P 3	P 3	WkE	Weikert and Klinesville shaly silt loams, 25 to 80 percent slopes	Klinesville	35	0.01	Somewhat excessively drained	Not prime farmland	2	0.28
P 6	P 6	BeD	Berks channery silt loam, 15 to 25 percent slopes	Berks	100	5.54	Well drained	Not prime farmland	3	0.32

Field	Label	Musym	Muname	Comp	%	Acres	Drainage Class	Farmland Class	Tfact	Kfact
P 6	P 6	WkE	Weikert and Klinsville shaly silt loams, 25 to 80 percent slopes	Weikert	55	1.96	Somewhat excessively drained	Not prime farmland	2	0.32
P 6	P 6	WkE	Weikert and Klinsville shaly silt loams, 25 to 80 percent slopes	Klinsville	35	1.24	Somewhat excessively drained	Not prime farmland	2	0.28
P 7	P 7	BeD	Berks channery silt loam, 15 to 25 percent slopes	Berks	100	5.26	Well drained	Not prime farmland	3	0.32
P 7	P 7	LkD	Leck kill channery silt loam, 15 to 25 percent slopes	Leck Kill	80	0.07	Well drained	Not prime farmland	4	0.32
P 7	P 7	WkE	Weikert and Klinsville shaly silt loams, 25 to 80 percent slopes	Weikert	55	1.82	Somewhat excessively drained	Not prime farmland	2	0.32
P 7	P 7	WkE	Weikert and Klinsville shaly silt loams, 25 to 80 percent slopes	Klinsville	35	1.16	Somewhat excessively drained	Not prime farmland	2	0.28
P 8	P 8	BeD	Berks channery silt loam, 15 to 25 percent slopes	Berks	100	6.71	Well drained	Not prime farmland	3	0.32
P 8	P 8	HhC	Hartleton channery silt loam, 8 to 15 percent slopes	Hartleton	90	2.88	Well drained	Farmland of statewide importance	3	0.24
P 8	P 8	WkE	Weikert and Klinsville shaly silt loams, 25 to 80 percent slopes	Weikert	55	2.33	Somewhat excessively drained	Not prime farmland	2	0.32
P 8	P 8	WkE	Weikert and Klinsville shaly silt loams, 25 to 80 percent slopes	Klinsville	35	1.49	Somewhat excessively drained	Not prime farmland	2	0.28

Soil Acreages For Farm

Musym	Muname	Comp	%	Acres	Drainage Class	Farmland Class	Tfact	Kfact
BeD	Berks channery silt loam, 15 to 25 percent slopes	Berks	100	55.03	Well drained	Not prime farmland	3	0.32

Musym	Muname	Comp	%	Acres	Drainage Class	Farmland Class	Tfact	Kfact
WkE	Weikert and Klinesville shaly silt loams, 25 to 80 percent slopes	Weikert	55	10.43	Somewhat excessively drained	Not prime farmland	2	0.32
WkE	Weikert and Klinesville shaly silt loams, 25 to 80 percent slopes	Klinesville	35	6.63	Somewhat excessively drained	Not prime farmland	2	0.28
BeB	Berks channery silt loam, 3 to 8 percent slopes	Berks	100	1.77	Well drained	Farmland of statewide importance	3	0.32
BeC	Berks channery silt loam, 8 to 15 percent slopes	Berks	100	21.84	Well drained	Farmland of statewide importance	3	0.32
HhB	Hartleton channery silt loam, 3 to 8 percent slopes	Hartleton	75	1.26	Well drained	Farmland of statewide importance	3	0.24
HhC	Hartleton channery silt loam, 8 to 15 percent slopes	Hartleton	90	9.69	Well drained	Farmland of statewide importance	3	0.24
LkB	Leck kill channery silt loam, 3 to 8 percent slopes	Leck Kill	85	1.94	Well drained	All areas are prime farmland	4	0.32
LkC	Leck kill channery silt loam, 8 to 15 percent slopes	Leck Kill	90	4.12	Well drained	Farmland of statewide importance	4	0.32
LkD	Leck kill channery silt loam, 15 to 25 percent slopes	Leck Kill	80	3.34	Well drained	Not prime farmland	4	0.32
WeD	Weikert shaly silt loam, 15 to 25 percent slopes	Weikert	85	1.75	Somewhat excessively drained	Not prime farmland	2	0.32