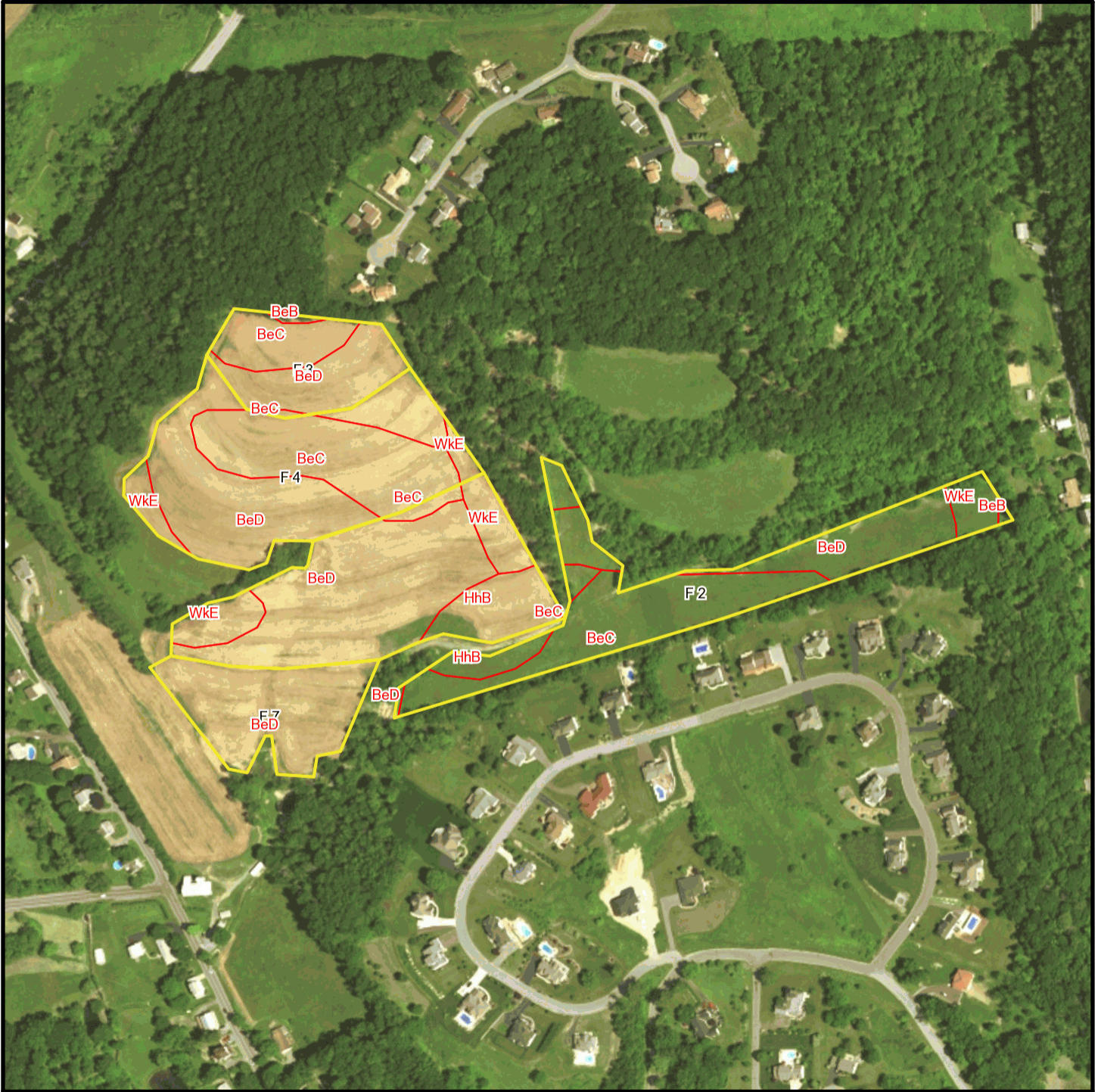
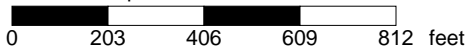


London T 1232 Soil Map



* 406.0 feet per inch



Soil Acreages By Field

Field	Label	Musym	Muname	Comp	%	Acres	Drainage Class	Farmland Class	Tfact	Kfact
F 22	F 2	BeB	Berks channery silt loam, 3 to 8 percent slopes	Berks	100	0.04	Well drained	Farmland of statewide importance	3	0.32
F 22	F 2	BeC	Berks channery silt loam, 8 to 15 percent slopes	Berks	100	2.97	Well drained	Farmland of statewide importance	3	0.32
F 22	F 2	BeD	Berks channery silt loam, 15 to 25 percent slopes	Berks	100	2.06	Well drained	Not prime farmland	3	0.32
F 22	F 2	HhB	Hartleton channery silt loam, 3 to 8 percent slopes	Hartleton	75	0.57	Well drained	Farmland of statewide importance	3	0.24
F 22	F 2	WkE	Weikert and Klinesville shaly silt loams, 25 to 80 percent slopes	Weikert	55	0.39	Somewhat excessively drained	Not prime farmland	2	0.32
F 22	F 2	WkE	Weikert and Klinesville shaly silt loams, 25 to 80 percent slopes	Klinesville	35	0.25	Somewhat excessively drained	Not prime farmland	2	0.28
F 3	F 3	BeB	Berks channery silt loam, 3 to 8 percent slopes	Berks	100	0.06	Well drained	Farmland of statewide importance	3	0.32
F 3	F 3	BeC	Berks channery silt loam, 8 to 15 percent slopes	Berks	100	1.14	Well drained	Farmland of statewide importance	3	0.32
F 3	F 3	BeD	Berks channery silt loam, 15 to 25 percent slopes	Berks	100	1.6	Well drained	Not prime farmland	3	0.32
F 4	F 4	BeC	Berks channery silt loam, 8 to 15 percent slopes	Berks	100	3	Well drained	Farmland of statewide importance	3	0.32
F 4	F 4	BeD	Berks channery silt loam, 15 to 25 percent slopes	Berks	100	4.19	Well drained	Not prime farmland	3	0.32
F 4	F 4	WkE	Weikert and Klinesville shaly silt loams, 25 to 80 percent slopes	Weikert	55	0.31	Somewhat excessively drained	Not prime farmland	2	0.32

Field	Label	Musym	Muname	Comp	%	Acres	Drainage Class	Farmland Class	Tfact	Kfact
F 4	F 4	WkE	Weikert and Klinsville shaly silt loams, 25 to 80 percent slopes	Klinsville	35	0.2	Somewhat excessively drained	Not prime farmland	2	0.28
F 6		BeC	Berks channery silt loam, 8 to 15 percent slopes	Berks	100	0.17	Well drained	Farmland of statewide importance	3	0.32
F 6		BeD	Berks channery silt loam, 15 to 25 percent slopes	Berks	100	4.87	Well drained	Not prime farmland	3	0.32
F 6		HhB	Hartleton channery silt loam, 3 to 8 percent slopes	Hartleton	75	1.14	Well drained	Farmland of statewide importance	3	0.24
F 6		WkE	Weikert and Klinsville shaly silt loams, 25 to 80 percent slopes	Weikert	55	0.76	Somewhat excessively drained	Not prime farmland	2	0.32
F 6		WkE	Weikert and Klinsville shaly silt loams, 25 to 80 percent slopes	Klinsville	35	0.48	Somewhat excessively drained	Not prime farmland	2	0.28
F 7	F 7	BeD	Berks channery silt loam, 15 to 25 percent slopes	Berks	100	3.04	Well drained	Not prime farmland	3	0.32

Soil Acreages For Farm

Musym	Muname	Comp	%	Acres	Drainage Class	Farmland Class	Tfact	Kfact
BeB	Berks channery silt loam, 3 to 8 percent slopes	Berks	100	0.1	Well drained	Farmland of statewide importance	3	0.32
BeC	Berks channery silt loam, 8 to 15 percent slopes	Berks	100	7.28	Well drained	Farmland of statewide importance	3	0.32
BeD	Berks channery silt loam, 15 to 25 percent slopes	Berks	100	15.76	Well drained	Not prime farmland	3	0.32
HhB	Hartleton channery silt loam, 3 to 8 percent slopes	Hartleton	75	1.71	Well drained	Farmland of statewide importance	3	0.24

Musym	Muname	Comp	%	Acres	Drainage Class	Farmland Class	Tfact	Kfact
WkE	Weikert and Klinesville shaly silt loams, 25 to 80 percent slopes	Weikert	55	1.46	Somewhat excessively drained	Not prime farmland	2	0.32
WkE	Weikert and Klinesville shaly silt loams, 25 to 80 percent slopes	Klinesville	35	0.93	Somewhat excessively drained	Not prime farmland	2	0.28