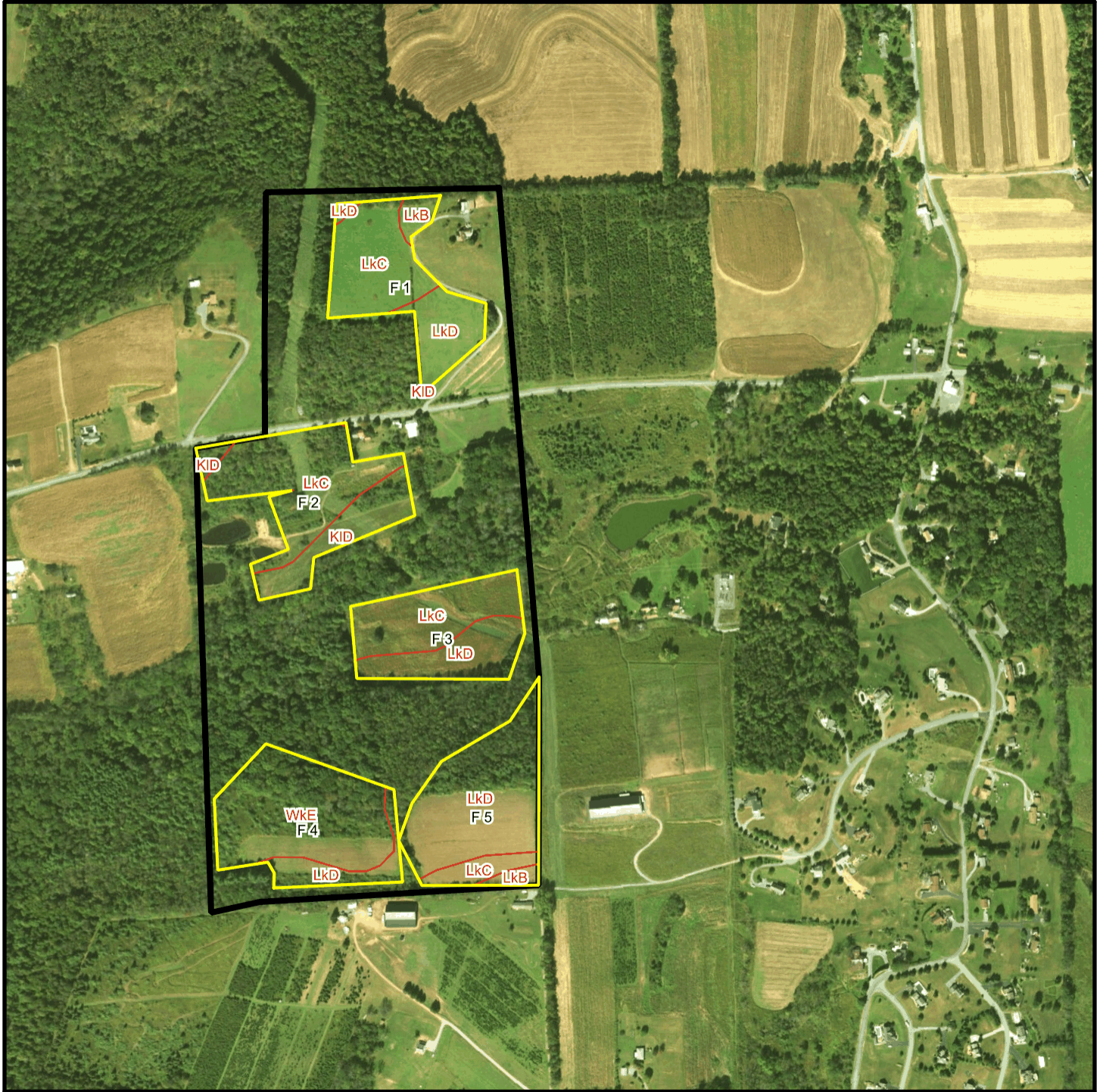
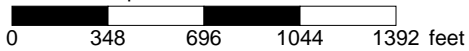


MCCoy T 1614 Soil Map



* 696.0 feet per inch



Soil Acreages By Field

Field	Label	Musym	Muname	Comp	%	Acres	Drainage Class	Farmland Class	Tfact	Kfact
F 1	F 1	KID	Klinesville shaly silt loam, 15 to 25 percent slopes	Klinesville	100	0.01	Somewhat excessively drained	Not prime farmland	2	0.28
F 1	F 1	LkB	Leck kill channery silt loam, 3 to 8 percent slopes	Leck Kill	85	0.65	Well drained	All areas are prime farmland	4	0.32
F 1	F 1	LkC	Leck kill channery silt loam, 8 to 15 percent slopes	Leck Kill	90	4.68	Well drained	Farmland of statewide importance	4	0.32
F 1	F 1	LkD	Leck kill channery silt loam, 15 to 25 percent slopes	Leck Kill	80	2.83	Well drained	Not prime farmland	4	0.32
F 2	F 2	KID	Klinesville shaly silt loam, 15 to 25 percent slopes	Klinesville	100	3.39	Somewhat excessively drained	Not prime farmland	2	0.28
F 2	F 2	LkC	Leck kill channery silt loam, 8 to 15 percent slopes	Leck Kill	90	7	Well drained	Farmland of statewide importance	4	0.32
F 3	F 3	LkC	Leck kill channery silt loam, 8 to 15 percent slopes	Leck Kill	90	4.65	Well drained	Farmland of statewide importance	4	0.32
F 3	F 3	LkD	Leck kill channery silt loam, 15 to 25 percent slopes	Leck Kill	80	3.32	Well drained	Not prime farmland	4	0.32
F 4	F 4	LkD	Leck kill channery silt loam, 15 to 25 percent slopes	Leck Kill	80	1.8	Well drained	Not prime farmland	4	0.32
F 4	F 4	WkE	Weikert and Klinesville shaly silt loams, 25 to 80 percent slopes	Weikert	55	5.41	Somewhat excessively drained	Not prime farmland	2	0.32
F 4	F 4	WkE	Weikert and Klinesville shaly silt loams, 25 to 80 percent slopes	Klinesville	35	3.44	Somewhat excessively drained	Not prime farmland	2	0.28
F 5	F 5	LkB	Leck kill channery silt loam, 3 to 8 percent slopes	Leck Kill	85	0.43	Well drained	All areas are prime farmland	4	0.32
F 5	F 5	LkC	Leck kill channery silt loam, 8 to 15 percent slopes	Leck Kill	90	1.14	Well drained	Farmland of statewide importance	4	0.32

Field	Label	Musym	Muname	Comp	%	Acres	Drainage Class	Farmland Class	Tfact	Kfact
F 5	F 5	LkD	Leck kill channery silt loam, 15 to 25 percent slopes	Leck Kill	80	8.24	Well drained	Not prime farmland	4	0.32

Soil Acreages For Farm

Musym	Muname	Comp	%	Acres	Drainage Class	Farmland Class	Tfact	Kfact
KID	Klinesville shaly silt loam, 15 to 25 percent slopes	Klinesville	100	3.4	Somewhat excessively drained	Not prime farmland	2	0.28
LkB	Leck kill channery silt loam, 3 to 8 percent slopes	Leck Kill	85	1.08	Well drained	All areas are prime farmland	4	0.32
LkC	Leck kill channery silt loam, 8 to 15 percent slopes	Leck Kill	90	17.47	Well drained	Farmland of statewide importance	4	0.32
LkD	Leck kill channery silt loam, 15 to 25 percent slopes	Leck Kill	80	16.19	Well drained	Not prime farmland	4	0.32
WkE	Weikert and Klinesville shaly silt loams, 25 to 80 percent slopes	Weikert	55	5.41	Somewhat excessively drained	Not prime farmland	2	0.32
WkE	Weikert and Klinesville shaly silt loams, 25 to 80 percent slopes	Klinesville	35	3.44	Somewhat excessively drained	Not prime farmland	2	0.28