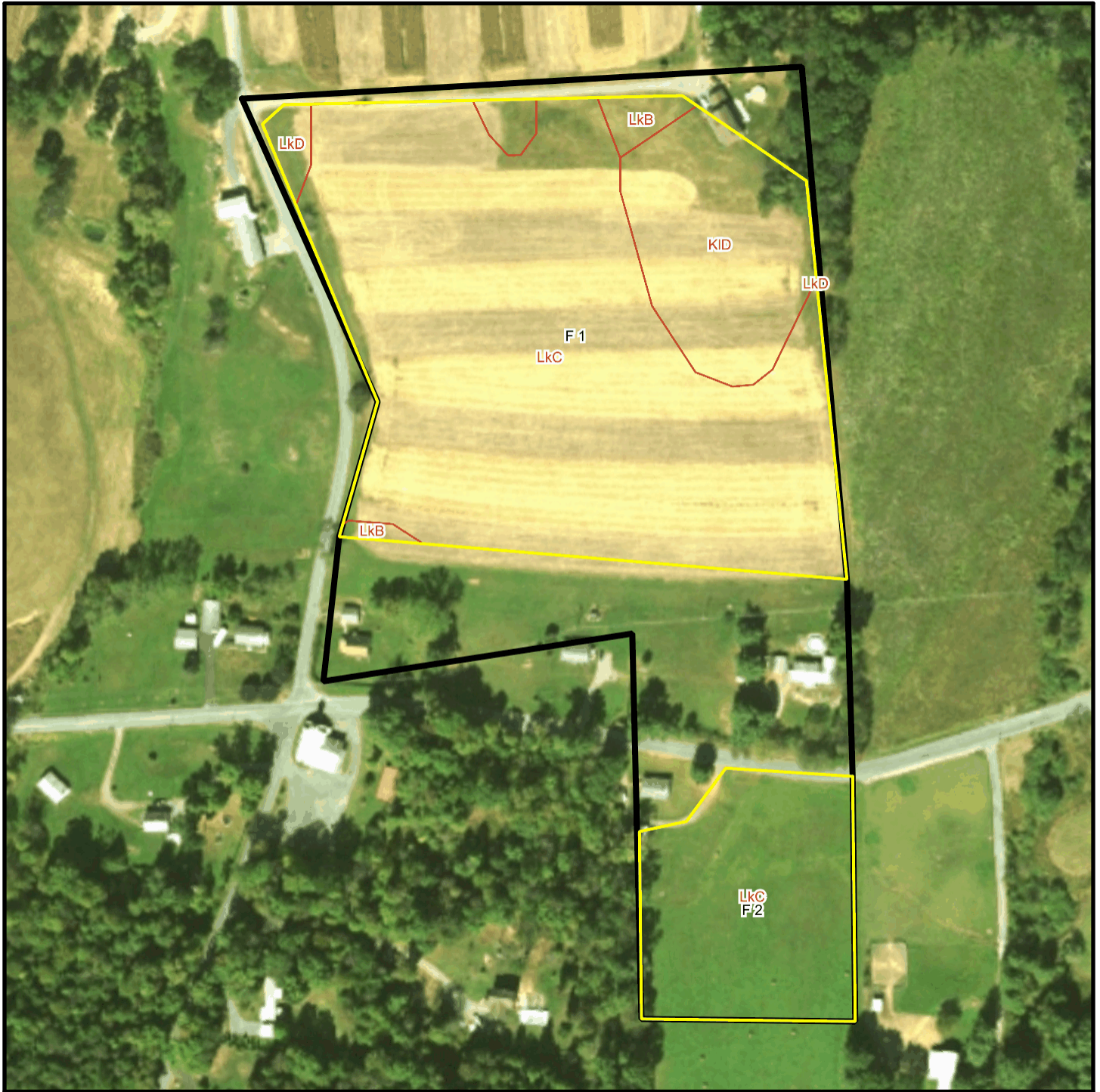
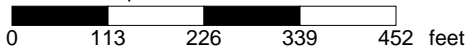


# McCoy T 3780 Soil Map



\* 226.0 feet per inch



## Soil Acreages By Field

| Field | Label | Musym | Muname  | Comp        | %   | Acres | Drainage Class               | Farmland Class                   | Tfact | Kfact |
|-------|-------|-------|---|-------------|-----|-------|------------------------------|----------------------------------|-------|-------|
| F 1   | F 1   | KID   | Klinesville shaly silt loam, 15 to 25 percent slopes  | Klinesville | 100 | 2.12  | Somewhat excessively drained | Not prime farmland               | 2     | 0.28  |
| F 1   | F 1   | LkB   | Leck kill channery silt loam, 3 to 8 percent slopes   | Leck Kill   | 85  | 0.39  | Well drained                 | All areas are prime farmland     | 4     | 0.32  |
| F 1   | F 1   | LkC   | Leck kill channery silt loam, 8 to 15 percent slopes  | Leck Kill   | 90  | 9.61  | Well drained                 | Farmland of statewide importance | 4     | 0.32  |
| F 1   | F 1   | LkD   | Leck kill channery silt loam, 15 to 25 percent slopes | Leck Kill   | 80  | 0.17  | Well drained                 | Not prime farmland               | 4     | 0.32  |
| F 2   | F 2   | LkC   | Leck kill channery silt loam, 8 to 15 percent slopes  | Leck Kill   | 90  | 2.76  | Well drained                 | Farmland of statewide importance | 4     | 0.32  |

## Soil Acreages For Farm

| Musym | Muname  | Comp        | %   | Acres | Drainage Class               | Farmland Class                   | Tfact | Kfact |
|-------|---|-------------|-----|-------|------------------------------|----------------------------------|-------|-------|
| KID   | Klinesville shaly silt loam, 15 to 25 percent slopes  | Klinesville | 100 | 2.12  | Somewhat excessively drained | Not prime farmland               | 2     | 0.28  |
| LkB   | Leck kill channery silt loam, 3 to 8 percent slopes   | Leck Kill   | 85  | 0.39  | Well drained                 | All areas are prime farmland     | 4     | 0.32  |
| LkC   | Leck kill channery silt loam, 8 to 15 percent slopes  | Leck Kill   | 90  | 12.37 | Well drained                 | Farmland of statewide importance | 4     | 0.32  |
| LkD   | Leck kill channery silt loam, 15 to 25 percent slopes | Leck Kill   | 80  | 0.17  | Well drained                 | Not prime farmland               | 4     | 0.32  |