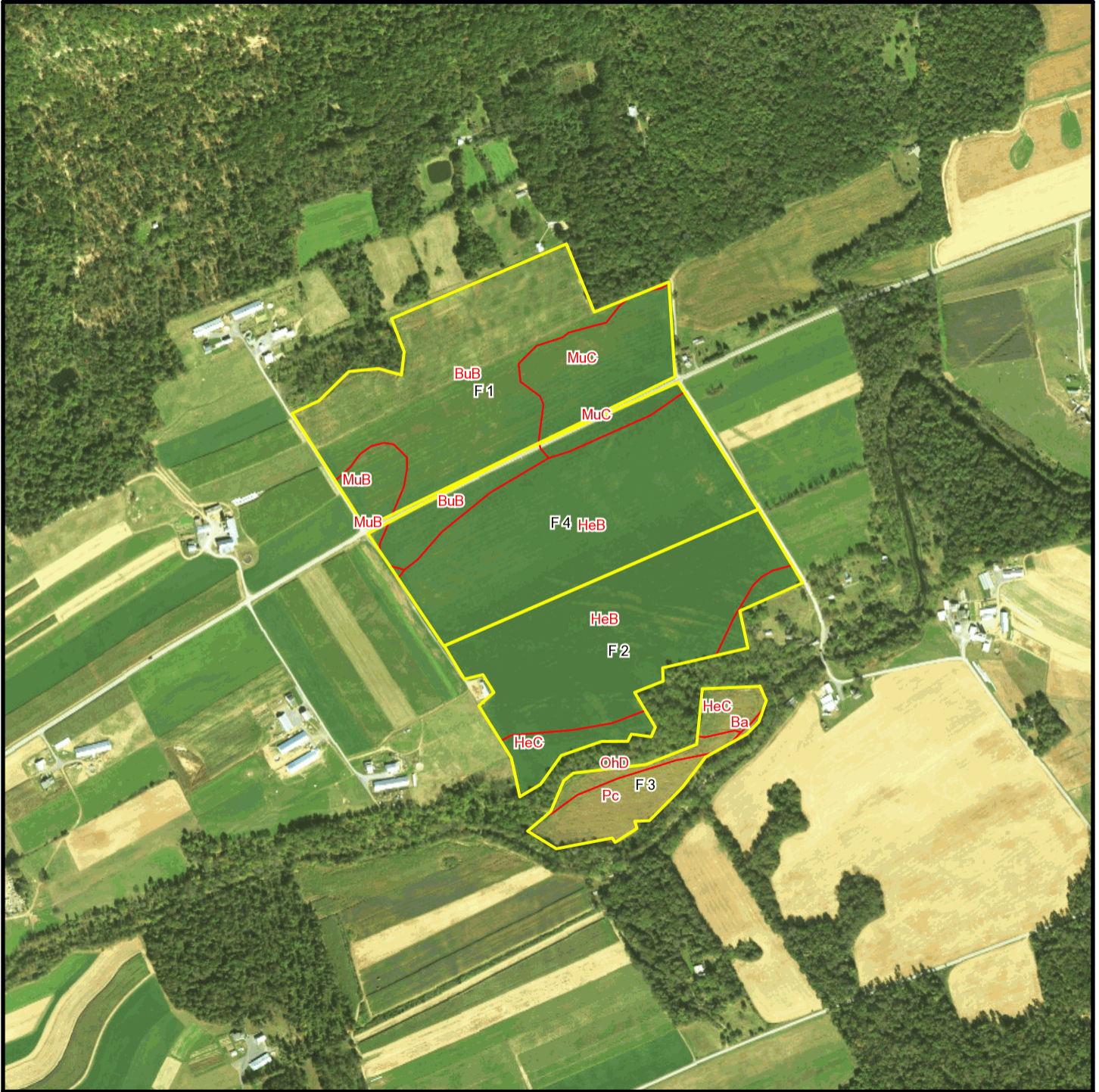
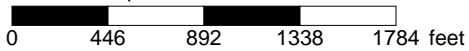


Schrack Farms T 462 Soil Map



* 892.0 feet per inch



Soil Acreages By Field

Field	Label	Musym	Muname	Comp	%	Acres	Drainage Class	Farmland Class	Tfact	Kfact
F 1	F 1	BuB	Buchanan-Andover gravelly loams, 3 to 8 percent slopes	Buchanan	45	17.16	Moderately well drained	Farmland of statewide importance	4	0.32
F 1	F 1	BuB	Buchanan-Andover gravelly loams, 3 to 8 percent slopes	Andover	40	15.25	Moderately well drained	Farmland of statewide importance	3	0.32
F 1	F 1	MuB	Murrill silt loam, 3 to 8 percent slopes	Murrill	75	3.35	Well drained	All areas are prime farmland	5	0.32
F 1	F 1	MuC	Murrill silt loam, 8 to 15 percent slopes	Murrill	75	11.47	Well drained	Farmland of statewide importance	5	0.32
F 2	F 2	HeB	Hagerstown silt loam, 3 to 8 percent slopes	Hagerstown	85	31.75	Well drained	All areas are prime farmland	5	0.37
F 2	F 2	HeC	Hagerstown silt loam, 8 to 15 percent slopes	Hagerstown	85	5.35	Well drained	Farmland of statewide importance	5	0.37
F 3	F 3	Ba	Barbour fine sandy loam	Barbour	80	0.14	Well drained	All areas are prime farmland	3	0.32
F 3	F 3	HeC	Hagerstown silt loam, 8 to 15 percent slopes	Hagerstown	85	2.31	Well drained	Farmland of statewide importance	5	0.37
F 3	F 3	OhD	Opequon-Hagerstown silty clay loams, 15 to 25 percent slopes	Opequon	70	1.62	Well drained	Not prime farmland	1	0.32
F 3	F 3	OhD	Opequon-Hagerstown silty clay loams, 15 to 25 percent slopes	Hagerstown	20	0.46	Well drained	Not prime farmland	3	0.32
F 3	F 3	Pc	Philo-Linden silt loams	Linden	40	2.92	Moderately well drained	All areas are prime farmland	3	0.37
F 3	F 3	Pc	Philo-Linden silt loams	Philo	45	3.28	Moderately well drained	All areas are prime farmland	5	0.37

Field	Label	Musym	Muname	Comp	%	Acres	Drainage Class	Farmland Class	Tfact	Kfact
F 4	F 4	BuB	Buchanan-Andover gravelly loams, 3 to 8 percent slopes	Buchanan	45	2.52	Moderately well drained	Farmland of statewide importance	4	0.32
F 4	F 4	BuB	Buchanan-Andover gravelly loams, 3 to 8 percent slopes	Andover	40	2.24	Moderately well drained	Farmland of statewide importance	3	0.32
F 4	F 4	HeB	Hagerstown silt loam, 3 to 8 percent slopes	Hagerstown	85	35.68	Well drained	All areas are prime farmland	5	0.37
F 4	F 4	MuB	Murrill silt loam, 3 to 8 percent slopes	Murrill	75	0.26	Well drained	All areas are prime farmland	5	0.32
F 4	F 4	MuC	Murrill silt loam, 8 to 15 percent slopes	Murrill	75	2.36	Well drained	Farmland of statewide importance	5	0.32

Soil Acreages For Farm

Musym	Muname	Comp	%	Acres	Drainage Class	Farmland Class	Tfact	Kfact
BuB	Buchanan-Andover gravelly loams, 3 to 8 percent slopes	Buchanan	45	19.68	Moderately well drained	Farmland of statewide importance	4	0.32
BuB	Buchanan-Andover gravelly loams, 3 to 8 percent slopes	Andover	40	17.49	Moderately well drained	Farmland of statewide importance	3	0.32
MuB	Murrill silt loam, 3 to 8 percent slopes	Murrill	75	3.61	Well drained	All areas are prime farmland	5	0.32
MuC	Murrill silt loam, 8 to 15 percent slopes	Murrill	75	13.83	Well drained	Farmland of statewide importance	5	0.32
HeB	Hagerstown silt loam, 3 to 8 percent slopes	Hagerstown	85	67.43	Well drained	All areas are prime farmland	5	0.37
HeC	Hagerstown silt loam, 8 to 15 percent slopes	Hagerstown	85	7.66	Well drained	Farmland of statewide importance	5	0.37

Musym	Muname	Comp	%	Acres	Drainage Class	Farmland Class	Tfact	Kfact
Ba	Barbour fine sandy loam	Barbour	80	0.14	Well drained	All areas are prime farmland	3	0.32
OhD	Opequon-Hagerstown silty clay loams, 15 to 25 percent slopes	Opequon	70	1.62	Well drained	Not prime farmland	1	0.32
OhD	Opequon-Hagerstown silty clay loams, 15 to 25 percent slopes	Hagerstown	20	0.46	Well drained	Not prime farmland	3	0.32
Pc	Philo-Linden silt loams	Linden	40	2.92	Moderately well drained	All areas are prime farmland	3	0.37
Pc	Philo-Linden silt loams	Philo	45	3.28	Moderately well drained	All areas are prime farmland	5	0.37