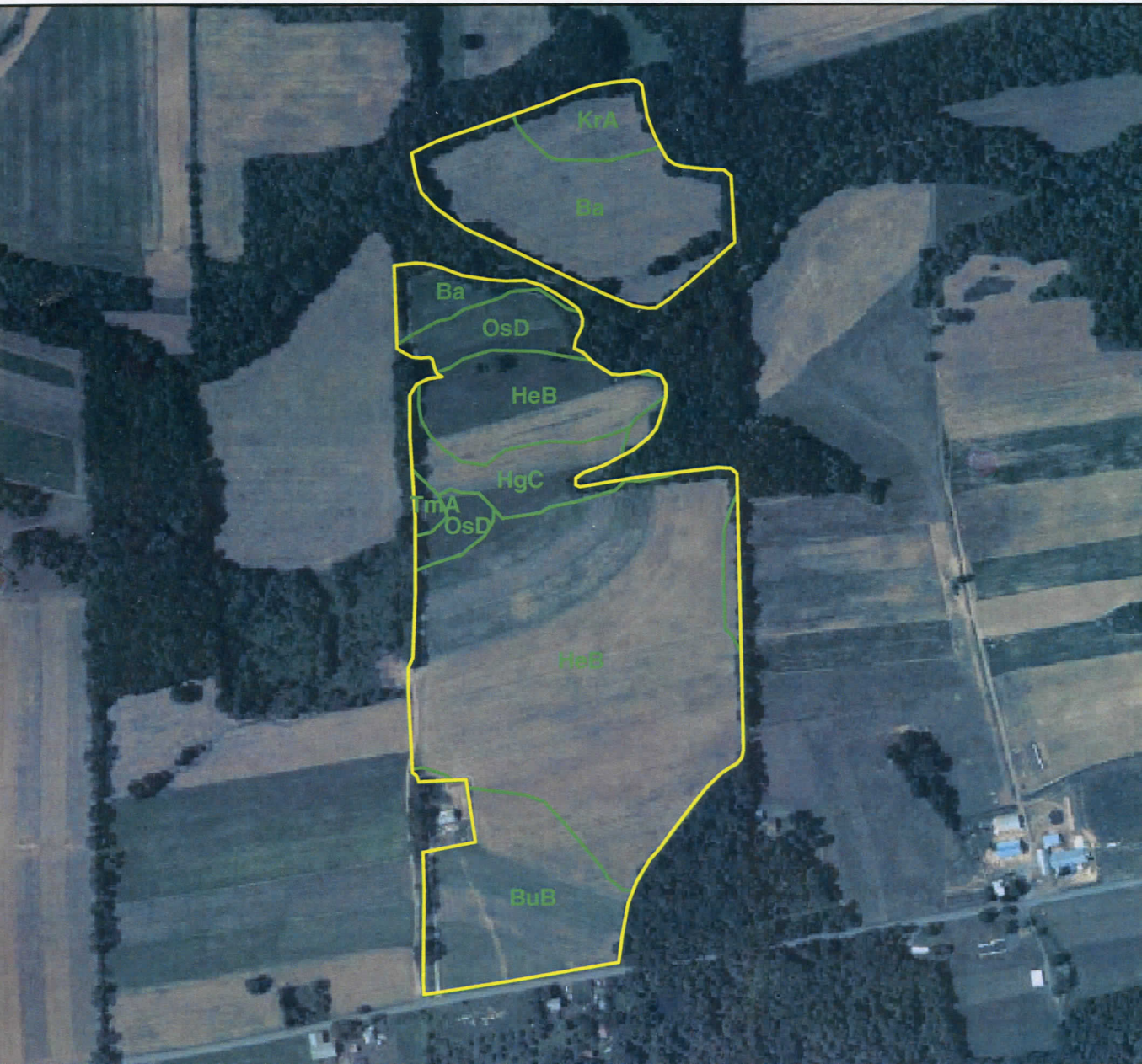




Assisted By: AMANDA COLEMAN  
Agency: USDA-NRCS  
Field Office: MILL HALL SERVICE CENTER  
District: CLINTON COUNTY CONSERVATION DISTRICT

Customer(s): SCHRACK FARMS PARTNERSHIP  
Approximate Acres: 54  
Date: 2/23/200

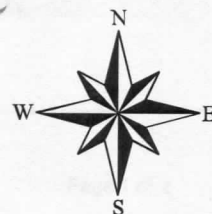
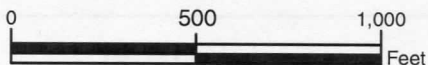




**Legend**

-  Planned Land
-  Soils Map

**Scale 1 in = 500 ft**



audiotape, etc.) should contact USDA's TARGET Center at 202-720-2600 (voice and TDD).

To file a complaint of discrimination write USDA, Director, Office of Civil Rights, Room 326-W, Whitten Building, 14th and Independence Avenue, Washington, D.C. 20250. (U.S. GPO: 1985-500-100) USDA is an equal opportunity provider and employer.