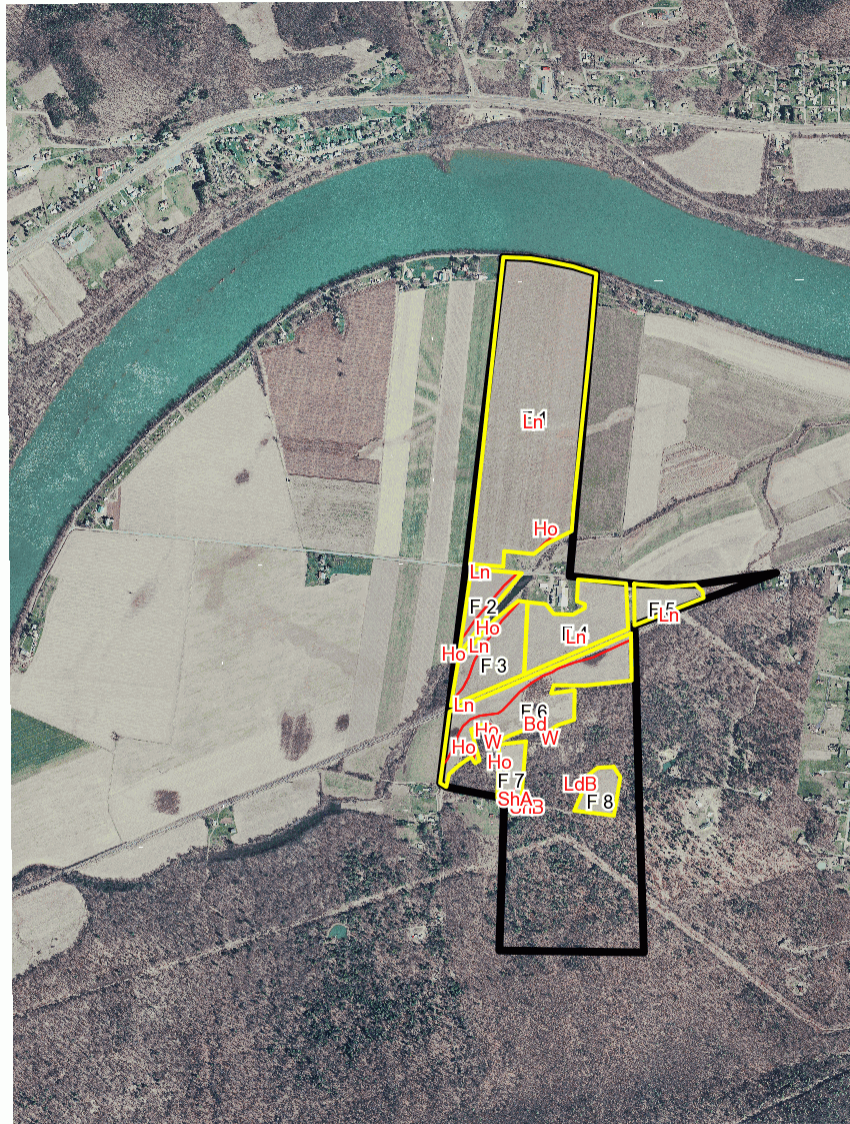
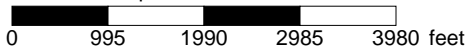


# Nutrient Balance Sheet Map



\* 1990.0 feet per inch



## Soil Acreages By Field

| Field | Label | Musym | Muname   | Acres | Drainage Class          | Farmland Class               | Kfact |
|-------|-------|-------|--|-------|-------------------------|------------------------------|-------|
| F 1   | F 1   | Ho    | Holly silt loam                                  | 0.14  | Very poorly drained     | Not prime farmland           | 0.28  |
| F 1   | F 1   | Ln    | Linden loam, occasionally flooded                | 68.83 | Well drained            | All areas are prime farmland | 0.37  |
| F 2   | F 2   | Ho    | Holly silt loam                                  | 1.47  | Very poorly drained     | Not prime farmland           | 0.28  |
| F 2   | F 2   | Ln    | Linden loam, occasionally flooded                | 3.75  | Well drained            | All areas are prime farmland | 0.37  |
| F 3   | F 3   | Ho    | Holly silt loam                                  | 2.4   | Very poorly drained     | Not prime farmland           | 0.28  |
| F 3   | F 3   | Ln    | Linden loam, occasionally flooded                | 8.41  | Well drained            | All areas are prime farmland | 0.37  |
| F 4   | F 4   | Ln    | Linden loam, occasionally flooded                | 13.86 | Well drained            | All areas are prime farmland | 0.37  |
| F 5   | F 5   | Ln    | Linden loam, occasionally flooded                | 4.37  | Well drained            | All areas are prime farmland | 0.37  |
| F 6   | F 6   | Bd    | Basher silt loam, occasionally flooded           | 15.86 | Moderately well drained | All areas are prime farmland | 0.32  |
| F 6   | F 6   | Ho    | Holly silt loam                                  | 0.15  | Very poorly drained     | Not prime farmland           | 0.28  |
| F 6   | F 6   | Ln    | Linden loam, occasionally flooded                | 5.66  | Well drained            | All areas are prime farmland | 0.37  |
| F 6   | F 6   | W     | Water  | 0.11  |                         | Not prime farmland           | NA    |
| F 7   | F 7   | Ho    | Holly silt loam                                  | 3.12  | Very poorly drained     | Not prime farmland           | 0.28  |
| F 7   | F 7   | ShA   | Shelmadine silt loam, 0 to 3 percent slopes      | 0.37  | Poorly drained          | Not prime farmland           | 0.32  |
| F 7   | F 7   | ShB   | Shelmadine silt loam, 3 to 8 percent slopes      | 0.01  | Poorly drained          | Not prime farmland           | 0.32  |
| F 8   | F 8   | LdB   | Laidig channery silt loam, 3 to 8 percent slopes | 3.95  | Well drained            | All areas are prime farmland | 0.32  |

## Soil Acreages For Farm

| MUSYM | MUNAME   | Drainage Class          | Farmland Class               | kfact | acres |
|-------|--|-------------------------|------------------------------|-------|-------|
| Bd    | Basher silt loam, occasionally flooded           | Moderately well drained | All areas are prime farmland | 0.32  | 15.86 |
| Ho    | Holly silt loam                                  | Very poorly drained     | Not prime farmland           | 0.28  | 7.28  |
| LdB   | Laidig channery silt loam, 3 to 8 percent slopes | Well drained            | All areas are prime farmland | 0.32  | 3.95  |

| MUSYM | MUNAME                                      | Drainage Class | Farmland Class               | kfact | acres  |
|-------|---|----------------|------------------------------|-------|--------|
| Ln    | Linden loam, occasionally flooded           | Well drained   | All areas are prime farmland | 0.37  | 104.88 |
| ShA   | Shelmadine silt loam, 0 to 3 percent slopes | Poorly drained | Not prime farmland           | 0.32  | 0.37   |
| ShB   | Shelmadine silt loam, 3 to 8 percent slopes | Poorly drained | Not prime farmland           | 0.32  | 0.01   |
| W     | Water                                       |                | Not prime farmland           |       | 0.11   |