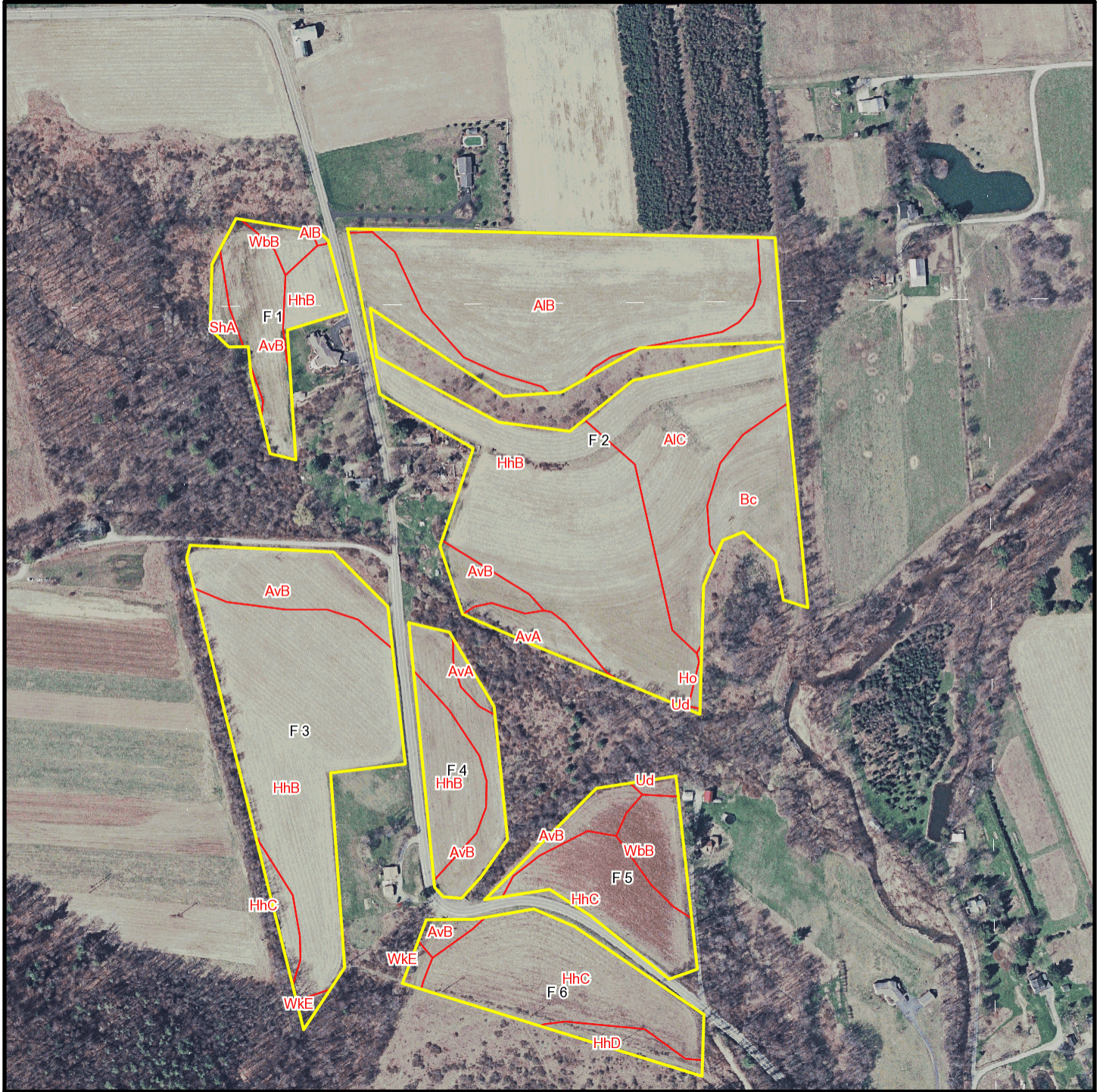
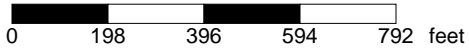


T 1275



* 396.0 feet per inch



Soil Acreages By Field

Field	Label	Musym	Muname	Acres	Drainage Class	Farmland Class	Kfact
F 1	F 1	AIB	Allenwood gravelly silt loam, 3 to 8 percent slopes	0.02	Well drained	All areas are prime farmland	0.32
F 1	F 1	AvB	Alvira silt loam, 3 to 8 percent slopes	1.65	Somewhat poorly drained	Farmland of statewide importance	0.32
F 1	F 1	HhB	Hartleton channery silt loam, 3 to 8 percent slopes	0.65	Well drained	Farmland of statewide importance	0.24
F 1	F 1	ShA	Shelmadine silt loam, 0 to 3 percent slopes	0.3	Poorly drained	Not prime farmland	0.32
F 1	F 1	WbB	Watson silt loam, 3 to 8 percent slopes	0.3	Moderately well drained	All areas are prime farmland	0.37
F 2	F 2	AIB	Allenwood gravelly silt loam, 3 to 8 percent slopes	7.2	Well drained	All areas are prime farmland	0.32
F 2	F 2	AIC	Allenwood gravelly silt loam, 8 to 15 percent slopes	4.88	Well drained	Farmland of statewide importance	0.32
F 2	F 2	AvA	Alvira silt loam, 0 to 3 percent slopes	0.6	Somewhat poorly drained	Farmland of statewide importance	0.32
F 2	F 2	AvB	Alvira silt loam, 3 to 8 percent slopes	0.55	Somewhat poorly drained	Farmland of statewide importance	0.32
F 2	F 2	Bc	Basher silt loam	1.88	Moderately well drained	All areas are prime farmland	0.32
F 2	F 2	HhB	Hartleton channery silt loam, 3 to 8 percent slopes	8.55	Well drained	Farmland of statewide importance	0.24
F 2	F 2	Ho	Holly silt loam	0.06	Very poorly drained	Not prime farmland	0.28
F 2	F 2	Ud	Udifluvents, loamy	0.01	Moderately well drained	Not prime farmland	0.49
F 3	F 3	AvB	Alvira silt loam, 3 to 8 percent slopes	1.8	Somewhat poorly drained	Farmland of statewide importance	0.32
F 3	F 3	HhB	Hartleton channery silt loam, 3 to 8 percent slopes	7.15	Well drained	Farmland of statewide importance	0.24
F 3	F 3	HhC	Hartleton channery silt loam, 8 to 15 percent slopes	0.36	Well drained	Farmland of statewide importance	0.24

Field	Label	Musym	Muname	Acres	Drainage Class	Farmland Class	Kfact
F 3	F 3	WkE	Weikert and Klinesville shaly silt loams, 25 to 80 percent slopes	0.18	Somewhat excessively drained	Not prime farmland	0.32
F 4	F 4	AvA	Alvira silt loam, 0 to 3 percent slopes	0.17	Somewhat poorly drained	Farmland of statewide importance	0.32
F 4	F 4	AvB	Alvira silt loam, 3 to 8 percent slopes	1.47	Somewhat poorly drained	Farmland of statewide importance	0.32
F 4	F 4	HhB	Hartleton channery silt loam, 3 to 8 percent slopes	1.42	Well drained	Farmland of statewide importance	0.24
F 5	F 5	AvB	Alvira silt loam, 3 to 8 percent slopes	0.59	Somewhat poorly drained	Farmland of statewide importance	0.32
F 5	F 5	HhC	Hartleton channery silt loam, 8 to 15 percent slopes	2.1	Well drained	Farmland of statewide importance	0.24
F 5	F 5	Ud	Udifluvents, loamy	0.11	Moderately well drained	Not prime farmland	0.49
F 5	F 5	WbB	Watson silt loam, 3 to 8 percent slopes	0.92	Moderately well drained	All areas are prime farmland	0.37
F 6	F 6	AvB	Alvira silt loam, 3 to 8 percent slopes	0.23	Somewhat poorly drained	Farmland of statewide importance	0.32
F 6	F 6	HhC	Hartleton channery silt loam, 8 to 15 percent slopes	3.64	Well drained	Farmland of statewide importance	0.24
F 6	F 6	HhD	Hartleton channery silt loam, 15 to 25 percent slopes	0.5	Well drained	Not prime farmland	0.24
F 6	F 6	WkE	Weikert and Klinesville shaly silt loams, 25 to 80 percent slopes	0.26	Somewhat excessively drained	Not prime farmland	0.32

Soil Acreages For Farm

MUSYM	MUNAME	Drainage Class	Farmland Class	kfact	acres
AIB	Allenwood gravelly silt loam, 3 to 8 percent slopes	Well drained	All areas are prime farmland	0.32	7.22
AIC	Allenwood gravelly silt loam, 8 to 15 percent slopes	Well drained	Farmland of statewide importance	0.32	4.88
AvA	Alvira silt loam, 0 to 3 percent slopes	Somewhat poorly drained	Farmland of statewide importance	0.32	0.77
AvB	Alvira silt loam, 3 to 8 percent slopes	Somewhat poorly drained	Farmland of statewide importance	0.32	6.29

MUSYM	MUNAME	Drainage Class	Farmland Class	kfact	acres
Bc	Basher silt loam	Moderately well drained	All areas are prime farmland	0.32	1.88
HhB	Hartleton channery silt loam, 3 to 8 percent slopes	Well drained	Farmland of statewide importance	0.24	17.77
HhC	Hartleton channery silt loam, 8 to 15 percent slopes	Well drained	Farmland of statewide importance	0.24	6.1
HhD	Hartleton channery silt loam, 15 to 25 percent slopes	Well drained	Not prime farmland	0.24	0.5
Ho	Holly silt loam	Very poorly drained	Not prime farmland	0.28	0.06
ShA	Shelmadine silt loam, 0 to 3 percent slopes	Poorly drained	Not prime farmland	0.32	0.3
Ud	Udifluvents, loamy	Moderately well drained	Not prime farmland	0.49	0.12
WbB	Watson silt loam, 3 to 8 percent slopes	Moderately well drained	All areas are prime farmland	0.37	1.22
WkE	Weikert and Klinesville shaly silt loams, 25 to 80 percent slopes	Somewhat excessively drained	Not prime farmland	0.28	0.22
WkE	Weikert and Klinesville shaly silt loams, 25 to 80 percent slopes	Somewhat excessively drained	Not prime farmland	0.32	0.22